

Otterbein University

Digital Commons @ Otterbein

Otterbein University Yearbooks

Alumni

1919

Sibyl 1919

Otterbein University

Follow this and additional works at: <https://digitalcommons.otterbein.edu/yearbooks>



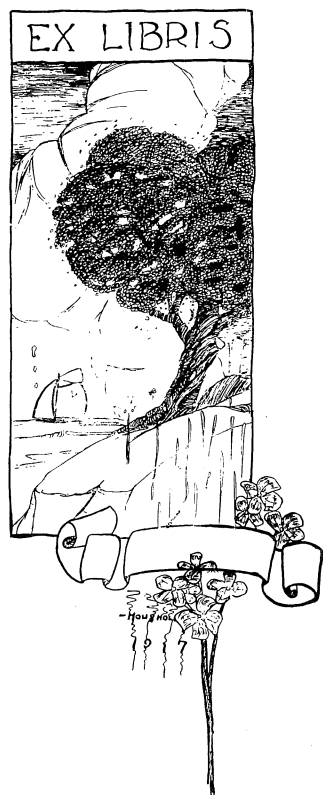
Part of the [Higher Education Commons](#), and the [Social and Cultural Anthropology Commons](#)

Recommended Citation

Otterbein University, "Sibyl 1919" (1919). *Otterbein University Yearbooks*. 75.
<https://digitalcommons.otterbein.edu/yearbooks/75>

This Book is brought to you for free and open access by the Alumni at Digital Commons @ Otterbein. It has been accepted for inclusion in Otterbein University Yearbooks by an authorized administrator of Digital Commons @ Otterbein. For more information, please contact digitalcommons07@otterbein.edu.





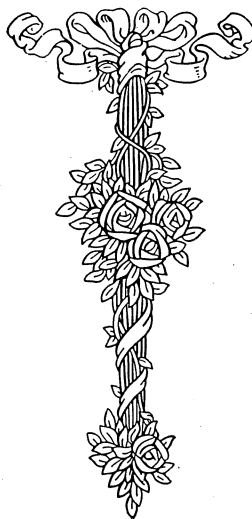
The Sibyl

A BIENNIAL CHRONICLE

COMPILED BY

The Junior Class of Otterbein College

1919



Published by

The Class of 1919

VOLUME XII

FOREWORD



IN EDITING this Sibyl of 1919, it has been the purpose of the staff to present a patriotic number. We have tried to publish a book which not only the Junior class, but the entire student body and alumni may appreciate.

We trust that we have given to you a true glimpse and record of our college life at Otterbein, and that it shall recall pleasant memories of the Past. That it may strengthen in the students the loyalty and devotion they owe their Alma Mater, is our one wish.



Dedication

To the noble and brave sons of Otterbein, who
so willingly went forth to fight for humanity,
to save the World from the heel of autocracy,
and to protect human liberty, which for
centuries has been kept as a precious
heritage,—to these we dedicate this
volume of the Sibyl.

Table of Contents

CAMPUS VIEWS.

FACULTY.

CLASSES.

MILITARY VIEWS.

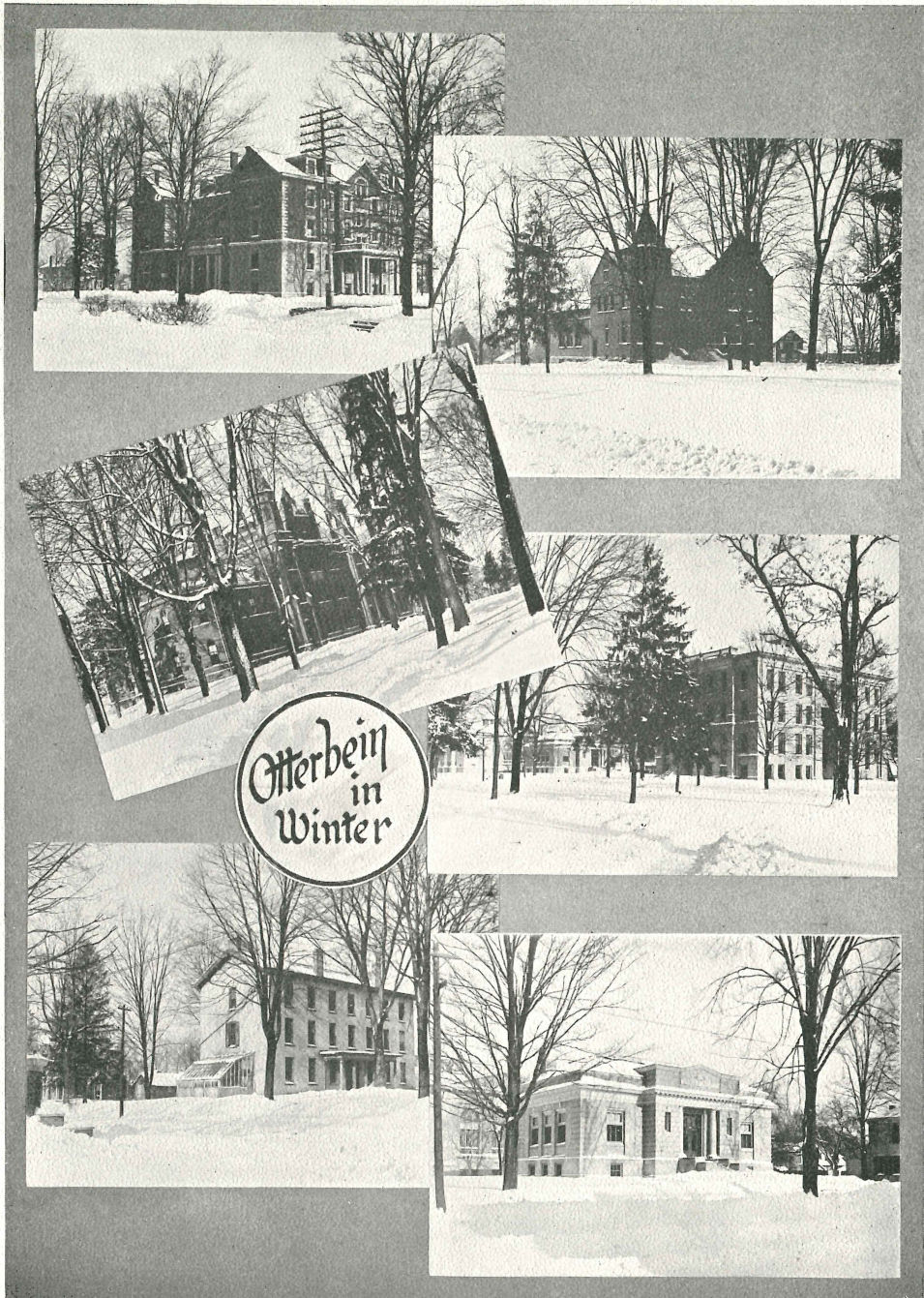
ORGANIZATIONS.

ATHLETICS.

LOCALS.

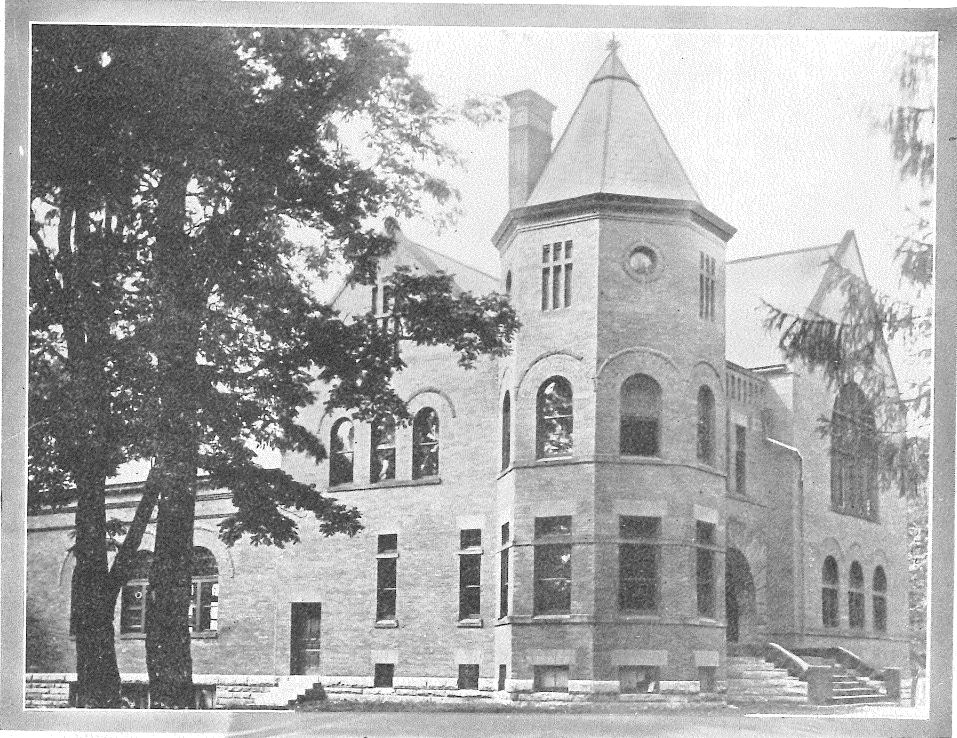


- JAMES R. HENDERSON - 5.

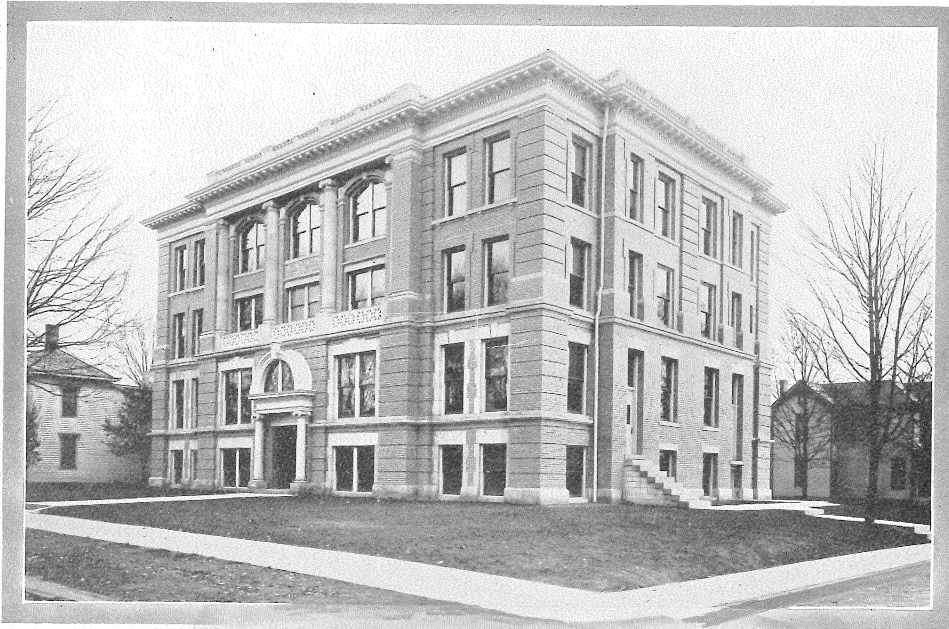




*Enchanted spot, whose memory clings,
Tho feet may stray far from its shade*



*Our "Gym" and "Y" may here be viewed.
The scene of hot-contested games*



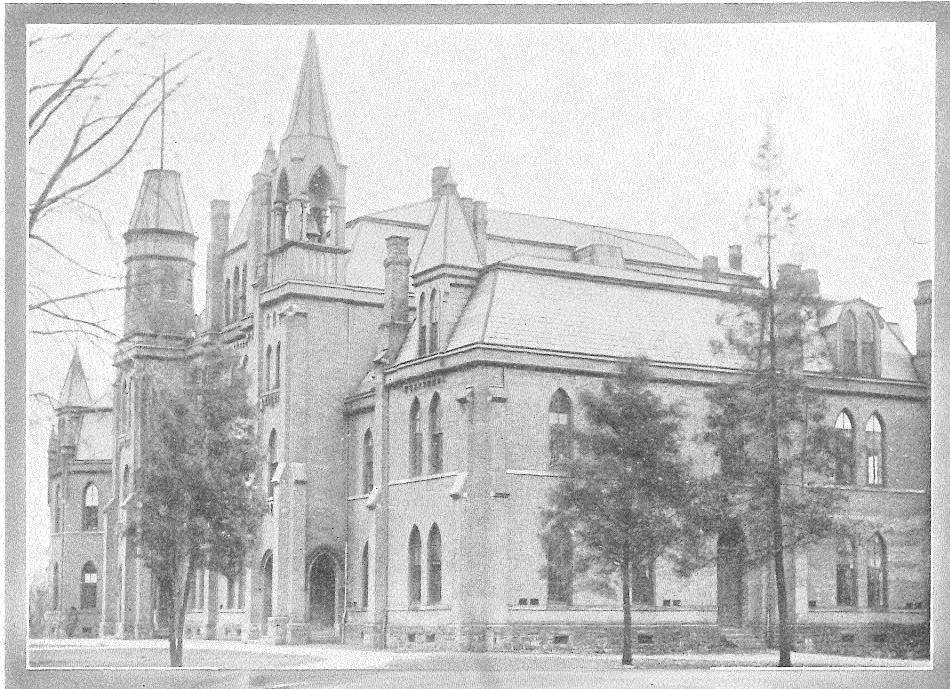
*"Music hath charms"—and here are found,
With Music, Art and Domestic Science.*



*So full of books and things to read,
The Library lures with its noiseless halls*



*Where the laughter mingles oft with song,
Here live some eighty girls or more!*



*With towers rising toward the sky
In calm, majestic grandeur stands*

FACULTY



President's Message

*To the Patrons and Friends of Otterbein College
Thruout the World, Greetings:*



COLLEGE is the servant of society. As such its function is on the one hand to interpret and express the will of society, and on the other to establish ideals and render service for society. Each college has its own constituency. It consists of that group of people who own, control and support it. As such it becomes a servant of its own friends as well as the world at large.

Colleges need not be uniform in either their standards or ideals; by the very nature of the case that cannot be. Each college organization sets for itself certain standards and ideals. While the American colleges have many things in common, their life differs in minor particulars.

The efficiency of a college does not consist in its wealth, its size, or its numbers. Fine buildings do not constitute a college. Millions of dollars of endowment do not constitute a college. The number of students and graduates in them do not. The essential quality of a college is its educational program, its social, moral and religious ideals and standards, and its ability to render service directly to its constituency and indirectly to society in general. Having stated its policy, a college should be willing to receive only those who support its ideals and who measure up to its academic standards and social program. In proportion as it contributes to the welfare of the individual will it be able to contribute in turn to the life of the community and society.

Otterbein College has a fixed program. Its curriculum has been enlarged from year to year. It tries to fit itself to the need of its constituency. As a denominational school its aim and purpose is to serve the people who maintain it. Necessarily certain restrictions and limitations are placed upon it. At the same time its ability to render a peculiar type of service is intensified.

The recent successful campaign for \$400,000, following quickly the previous campaign for \$100,000 enables the college to enlarge its equipment, increase its income from endowment, and to construct an adequate science building. It is trying to interpret the needs of the new day and to accommodate itself to them so as to make a new contribution to the world.

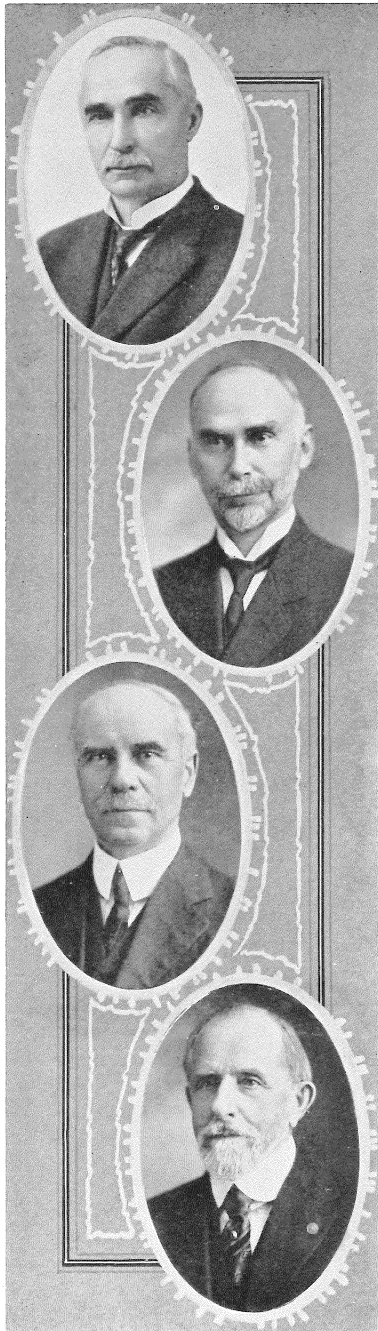
To those who have made possible its newer life and efficiency the college extends greetings. To those who will receive of its benefits, the college extends felicitations and good wishes.

W. G. CLIPPINGER,

President.



PRESIDENT WALTER GILLAN CLIPPINGER, A.B., D.D.



GEORGE SCOTT

Ph.D. Yale '90; LL.D. Alfred University 1906. 1887—Professor of Latin, 1901-04, President, Otterbein.

FRANK E. MILLER

A.M. Otterbein '90; Ph.D. Otterbein '92. 1890—Professor of Mathematics, Otterbein. Deceased.

THOMAS J. SANDERS

Ph.B. Wooster '88; LL.D. Otterbein 1913. 1891-1901, President, 1901—Professor of Philosophy, Otterbein.

EDMUND A. JONES

A.M. Amherst '71; Ph.D. Ohio University 1903. 1909—Professor of Bible and Education, Otterbein.

CHARLES SNAVELY

A.B. Otterbein '94; Ph.D. John Hopkins 1902. 1901—Professor of Sociology and Economics, Otterbein.

SARAH M. SHERRICK

Ph.B. Otterbein '89; Ph.D. Yale '96. 1902—Professor of English Literature, Otterbein.

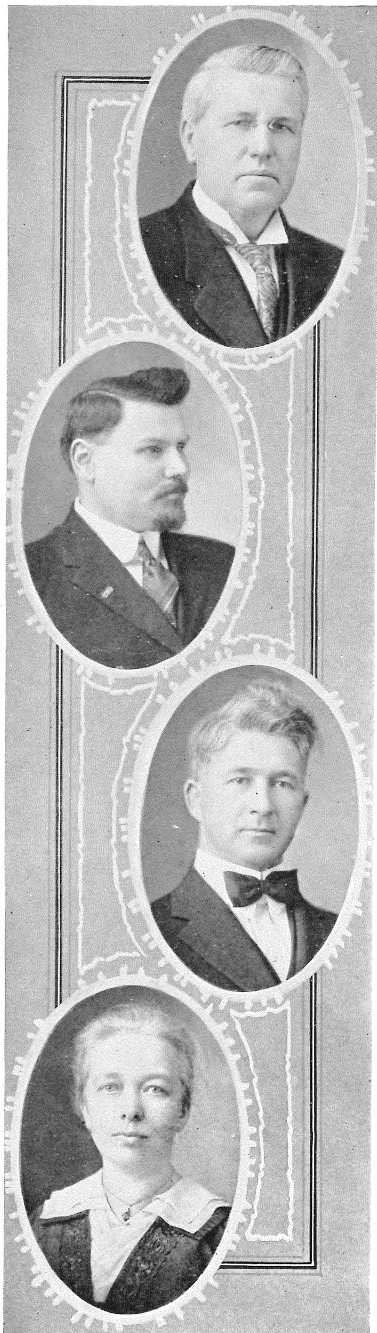
LEWIS A. WEINLAND

B.S. Otterbein 1905; A.M. Ohio State University 1910. 1908—Professor of Chemistry, Otterbein.

EDWARD WALDO SCHEAR

A.B. Otterbein 1907; A.M. Columbia 1914. 1912—Professor of Biology, Otterbein.





N. E. CORNETET

A.B. Otterbein '96; A.M. Otterbein 1902.
1901—Registrar and Professor of Greek,
Otterbein.

ALZO PIERRE ROSSELOT

A.B. Otterbein 1905; A.M. University of
Wisconsin 1908. 1905—Professor of Ro-
mance, Language and Literature, Otterbein.

C. O. ALTMAN

A.B. Otterbein 1905; A.M. Ohio State
University 1912. 1915—Professor of Rhe-
toric and Composition, Otterbein.

ALMA GUITNER

A.B. Otterbein '97; A.M. Columbia 1911.
1900—Professor of Language and Litera-
ture, Otterbein.

JAMES McCLOY

B.S. Purdue University 1913. 1913—Professor of Physics and Astronomy, Otterbein.

CHARLES A. FRITZ

A.B. Ohio Wesleyan 1912; A.M. Ohio Wesleyan 1915. 1915—Professor of Public Speaking, Otterbein.

NELLIE NOBLE

Home Economics Department, Miami, 1910. 1915—Professor of Home Economics, Otterbein.

GENEVA NICHOLS SCHEAR

A.B., Otterbein 1913. 1916—Instructor in Elementary Biology, Otterbein.



CORA B. McFADDEN

B.S. Otterbein '77. 1916—Dean of Women, Otterbein.

GLEN GRANT GRABILL

B. Mus. Otterbein 1904; Studied Music in Germany. 1908—Director of Conservatory of Music, Otterbein.

ARTHUR R. SPESSARD

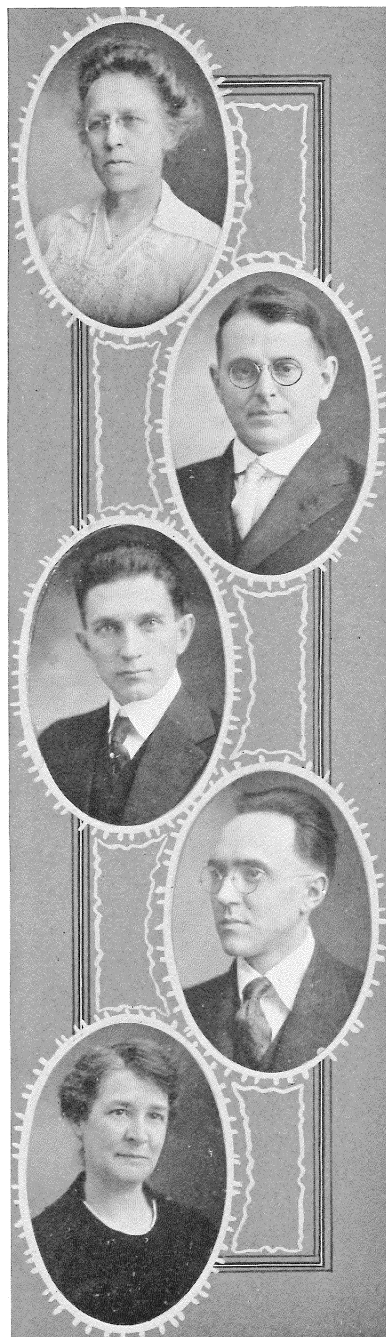
B.I. Neff College, Philadelphia, 1908; Studied in London. 1913-17 Instructor of Violin and Stringed Instruments, Otterbein; 1917—Instructor of Voice, Otterbein.

EARL HOPKINS

Studied in Columbus with Hidden, Goehl, and Ziegler; Studied in Berlin with Professor Barmas. 1917—Instructor in Violin, Otterbein.

LULA BAKER

A.B. Otterbein '96; B. Mus. Otterbein 1916. Studied one year abroad. 1903—Instructor in Piano, Otterbein.





MAUDE HANAWALT

Graduated in Piano, Otterbein, 1906;
Post Graduate Four Years, Otterbein. 1906
—Instructor in Piano, Otterbein.

TIRZA BARNES

B.S. Otterbein '85; 1890-98 Head of
Ladies' Department; 1896—Librarian, Ot-
terbein.

ANNA DELL LA FEVER

Ph.B. Otterbein '92. 1908—Assistant Li-
brarian, Otterbein.

ELMER E. BURTNER

A.B. Otterbein 1908; B.D. 'cum laude,'
Yale 1909; A.M. Yale 1910. 1914—College
Pastor, Otterbein.

Seniors



READY TO TAKE THE
BURDEN FROM ATLAS.

Who's who at Otterbein? Nineteen-nineteen

When we first, with timid trembling, Otterbein's recruits became,
Some strange, subtle intuition whispered: "This class shall win fame."
We were destined from our advent for success and fair renown;
This was manifest on Scrap Day—NINETEEN-NINETEEN won the crown!

Seeing us the next September, students, Faculty and town
Breathed a sigh of satisfaction; in relief they settled down,
Ah! They knew the school would flourish under our firm, guiding hand,
Prexy, weakly wavering, quavered: "NINETEEN-NINETEEN, take command!"

Shadows dark appear to rise, changing all to sudden gloom,
Spring has lost her power to charm; no one sees the violets bloom.
War has made its presence felt; France has called. From day to day
Loyal sons march proudly forth. NINETEEN-NINETEEN leads the way!

Innovations now take place,—bugle calls, S. A. T. C.,
Drill recurs from dawn till dark; study supervised must be.
While the world lay dark and still, ere the rising of the sun,
Happy bells pealed forth with joy. (NINETEEN-NINETEEN had it done).

Peace serene makes all rejoice,—conscript, corp'ral, volunteer,
Officer and rookie, rest! You have done your duty here.
Now the reconstruction time calls for men of wisdom rare,
Who will meet the need at once? NINETEEN-NINETEEN is right there.

College days are nearly over,—lustrous jewels, one by one,
Slowly slipping farther from us, from the broken string they run.
We have planted many heart-roots in the soil of Otterbein;
To transplant them now brings heartache, thoughts too deep for tears are mine.
Alma Mater, thrive and grow! NINETEEN-NINETEEN loves you so!

Here we caught the vision splendid, followed from afar the gleam,
As we travelled onward, upward, ever nearer to our dream.
We have felt the touch of many other lives upon our own,
This has helped to make us stronger; friendships thus have deeper grown.
Though deep yearnings fill each heart, NINETEEN-NINETEEN must depart.

H. M. R. '19.

LOIS LORETTA ADAMS

WESTERVILLE, OHIO

Philalethea; Quiz and Quill Club, Secretary, (4).

"Literature is an avenue to glory."

WILMA ADAMS

WESTERVILLE, OHIO

Cleiorhetea.

*"Dreams she would portray, and bushes fair
Her brush can trace upon the canvas white."*

GRACE MARIE ARMENTROUT

ROANOKE, VIRGINIA

Philalethea; Y. W. C. A. Cabinet, (2); Contributing Editor, Tan and Cardinal, (3), (4); Title Roll, French Play, (3); Second Prize, Short Story Contest, (3); First Trustee, Philalethea, (4); President, Quiz and Quill Club, (4).

*"Who hath not owned, with rapture-smitten
frame,
The power of grace?"*





MERYL BLACK

LA JUNTA, COLORADO

Cleiorhetea; Choral, (1), (2); Treasurer, Cochran Hall Association, (2); Science Club, Vice-President (2), President, (3); Treasurer, Y. W. C. A. (3).

"Twere better by far to be merry than wise."



HELEN BOVEE

WATERLOO, IOWA

Cleiorhetea; Contributing Editor, Aegis, (2); Class Basketball, (1), (2); Publication Board, (3); French Play, (3); Junior Class Play, (3); Frist Prize, Short Story Contest, (3); Contributing Editor, Tan and Cardinal, (3), (4); Class Secretary, (4); Quiz and Quill Club, (4).

*"I never dare to be
As funny as I can."*



VIRGINIA MARIE BURTNER

CANAL WINCHESTER, OHIO

Philaethea; Ladies' Glee Club (3); First Prize, Oratorical Contest, (3); Title Roll, Junior Play, (3); President, Public Speaking Council, (4).

*"I have no other but a woman's reason;
I love him so, because I love him so."*



RUDOLPH WAGONER

A.B. Otterbein '92; A.M. Otterbein. 1892
—Professor of Latin and Mathematics; 1893
—Principal of Academy.

MRS. A. P. ROSSELOT

York College 1901-3; U.B. Seminary
1903-04; Otterbein 1905-06. Studied in
Paris 1910-11. 1919—Instructor in French
Language.

JAMES PORTER WEST

A.M. Otterbein '97; Ph.B. Otterbein 1905.
1907-17—Professor of English and History,
Academy; 1917—Treasurer, Otterbein.

JESSIE MAY BROWN

A.B. Ohio State University 1911; Studied
Art, Columbia. 1916—Director of School of
Art, Otterbein.

CHARLES R. BUSCH

PLAINVILLE, INDIANA

Philomatheia; Mandolin and Guitar Club,
(4).

"....And mesmeric powers were his."

CLEO COPPOCK

WEST MILTON, OHIO

Cleiorhetea; Local Editor, Aegis, (2);
Class Basket Ball, (2); French Play, (3);
Ladies' Glee Club, (3), (4); Treasurer, Ath-
letic Association, (4); Vice-President, Quiz
and Quill Club, (4); Athletic Editor, Tan
and Cardinal, (4).

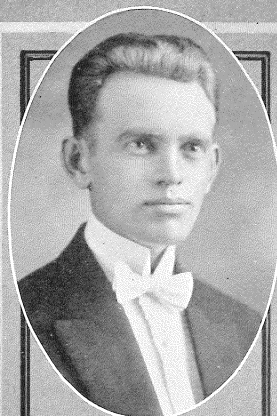
*"May all your virtues with the years improve
Till in consummate worth you shine."*

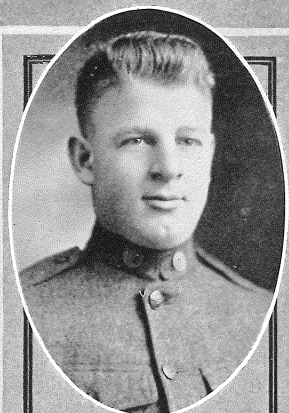
RUTH DRURY

DAYTON, OHIO

Philaethea; Class Vice-President, (1);
Executive Board, Cochran Hall Association,
(2); Review Staff, (2); Public Speaking
Council, (2); Y. W. C. A. Cabinet, (2),
(4); President, Women's Athletic Council,
(4).

*"Has she not always treasures, always
friends?"*





WILLIAM EVANS

MADISON, PENNSYLVANIA

Philophroneia; Football, (1), (2), (3), Captain Elect, (4); Class Basketball, (1), (2), (3); Class Baseball, (1), (2); President, Varsity "O", (3).

*"....He is broad and honest,
Breathing an easy gladness."*



FREDA FRAZIER

WESTERVILLE, OHIO

Cleiorhetea; Choral, (2); First Prize, Declamation Contest, (2); Junior Class Play, (3); Mandolin and Guitar Club, (4).

*"....Fond of fun,
And fond of dress, and change, and praise."*



MIRIAM GEORGE

OKANA, OHIO

Cleiorhetea; Science Club, Treasurer, (2), Secretary, (3), Vice-President, (3); Executive Board, Cochran Hall Association, (4); Y. W. C. A. Cabinet, (4).

*"How'er it be, it seems to me,
'Tis only noble to be good."*

GEORGE GLAUNER

MT. GILEAD, OHIO

Philophroneia; Publication Board, (3);
Debate Team, (3).

"A merry heart goes all the day."

EDITH HAHN

WESTERVILLE, OHIO

Philalethea; Class Basketball, (3); Choir,
(3), (4).

*"'Tis common sense! And human wit
Can claim no higher name than it."*

RAY J. HARMELINK

SHERMAN, NEW YORK

Philomatheia; Review Staff, (2); Class
Treasurer, (2), (4); Y. M. C. A. Cabinet,
(3), President, (4); Men's Glee Club, (3);
Assistant Editor, Tan and Cardinal, (3).

"Tall like a lamp-post, and a bit more thin."





MARGARET HAWLEY

ARCANUM, OHIO

Philalethea.

"Lo, what gentleness these women have."

LEONA HENDRIX

Philalethea.

*"Nothing lovelier can be found
In woman than to study household good."*

RUTH HOOPER

BRADFORD, PENNSYLVANIA

Cleiorhetea; Executive Board, Cochran Hall Association, (1), (3), President, (4); Choir, (3), (4); Mandolin and Guitar Club, (4); Cochran Hall Editor, Tan and Cardinal, (4); Women's Athletic Council, (4); Y. W. C. A. Vice-President, (4).

*"A sweet, attractive kind of grace,
A full assurance given by looks."*

GLADYS LAKE

ELKHART, INDIANA

Cleiorhetea; Choral, (1), (2); Class Secretary, (1); Choir, (1), (2), (3), (4); Y. W. C. A. Cabinet, (2), (3), (4); Public Speaking Council, Secretary, (2); Ladies' Glee Club, (3), (4); Executive Board Cochran Hall Association, (3); Publication Board, (3), Secretary, (4).

*"What good I see humbly I seek to do,
And live obedient to the law."*

JESSIE WEIR LA ROUCHE

ROCHESTER, NEW HAMPSHIRE

Philalethea; Class Secretary, (3); French Play, (3); Junior Play, (3); Y. W. C. A. Cabinet, (3), President, (4); Second Trustee, Philalethea, (4); Public Speaking Council, (4).

*"God gave her power to soothe and bless,
The calm strength of gentleness."*

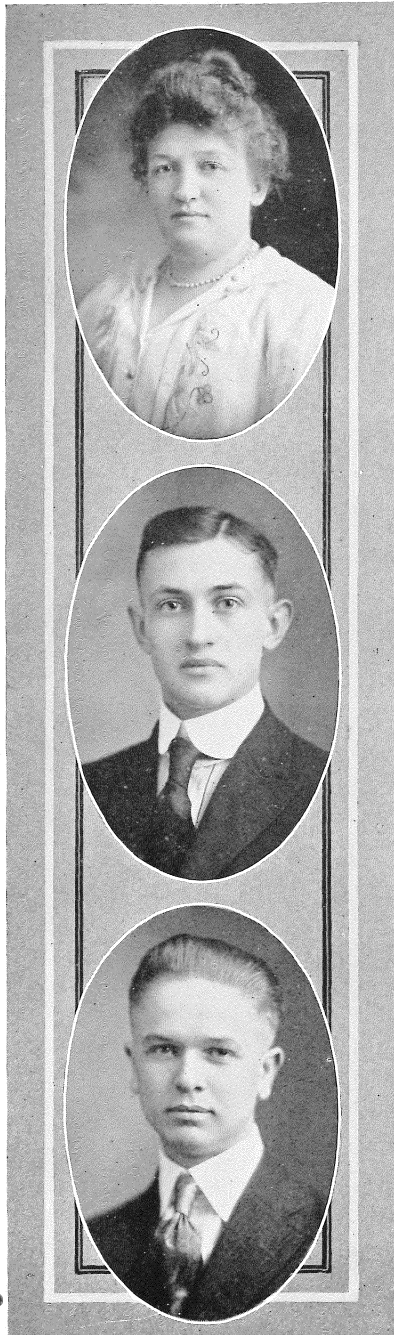
FLORENCE LOAR

MT. PLEASANT, PENNSYLVANIA

Philalethea; Choral, (1); Ladies' Glee Club, (3); Vice-President, Press Club, (3); Choir, (1); Cochran Hall Editor, Tan and Cardinal, (3); Class Vice-President, (4).

*"My lady with a coy and playful way;
For clever pranks she doth delight to play."*





ELMA PRUDENCE LYBARGER

WESTERVILLE, OHIO

Cleiorhetea; Quiz and Quill Club, (4).

*"A face though seldom sad, not oft-times
merry."*

H. E. MICHAEL

DAYTON, OHIO

Philomatheia; Choral, (1), (2); Choir, (1), (2), (3), (4); Men's Glee Club, (1), (2); Y. M. C. A. Cabinet, (2), (3), (4); Circulation Manager, Tan and Cardinal, (3); Athletic Board, (4); Basketball Manager, (4).

*"A gracious, simple, truthful man,
Who walks the earth erect."*

LYLE J. MICHAEL

BRYAN, OHIO

Philomatheia; Men's Glee Club, (1), (2), (3); Choral, (1), (2); Review Staff, (2); Athletic Board, (3); Treasurer, Athletic Association, (3); Editor-in-Chief, Tan and Cardinal, (3).

*"Hurrah for positive science! Long live
exact demonstration!"*

PETER GEORGE NABER

WESTERVILLE, OHIO

Philophronea; Volunteer Band.

*"A big broad man, whose face bespoke
An honest heart within."*

AUDREY NELSON

WESTERVILLE, OHIO

Cleiorhetea; Class Secretary, (1); Choir,
(1), (2), (3), (4); Y. W. C. A. Cabinet,
(2), (3); Public Speaking Council, (3);
Ladies' Glee Club, Secretary, Treasurer, (3);
President, (4).

*"Such songs have power to quiet
The restless pulse of care."*

LOIS JOSEPHINE NEIBEL

BALTIMORE, OHIO

Philalethea; Choir, (1), (2), (3), (4);
Choral, (2); Executive Board, Cochran Hall
Association, (2), (4); Y. W. C. A. Cabinet,
(2); Ladies' Glee Club, (3); Class Secre-
tary, (3); French Play, (3).

*"How oft hath she in earnest toil
Consumed the wick and midnight oil."*





RUSSEL PALMER

ZANESVILLE, OHIO

Philophronea; Class Basket Ball, (1), (2), (3); Baseball, (1), (2); Track, (3).

*"....And to his eye
There was but one beloved face on earth."*

BENJAMIN C. PETERS

WESTERVILLE, OHIO

Philophronea; I. P. A., (2), (3); Publication Board, (3), (4).

*"And the preacher's voice was bold as he rose
up then and told
Of the triumph of the righteous, of the pa-
tience of the saints."*

HARRIET RAYMOND

BERWICK, NOVA SCOTIA

Philalethea; Y. W. C. A. Cabinet, (1); Volunteer Band, Treasurer, (2), President, (4); Quiz and Quill Club, (4).

*"Ever level, ever true,
To the task she has to do."*

LENORE M. RAYOT

SARDINIA, OHIO

Philalethea; Class Basketball, (2), (4),
Captain, (3); Title Roll, French Play, (3).

*"O woman! thou wert fashioned to beguile;
So have all ages said, all poets sung."*

MARY GRIFFITH REAM

WESTERVILLE, OHIO

Cleiorhetea; College Orchestra, (1), (2),
(3), (4); Y. W. C. A. Cabinet, (3); Ot-
terbein Instrumental Quartet, (3), (4).

"Woman's at best a contradiction still."

LAWRENCE REPLOGLE

DAYTON, OHIO

Philomatheia; Choral, (1); Choir, (1),
(3), (4); Gen's Glee Club, (2); Business
Manager, Review, (2); Y. M. C. A. Cabinet,
(4); Public Speaking Council, (4).

*"Happy the man who has been able
To learn the causes of things."*





BEATRICE SHAFER

BENTON HARBOR, MICHIGAN

Cleiorhetea; Class Basketball, (1), (2).

"False would I never—rash I would not be."



JUDSON SIDDALL

WESTERVILLE, OHIO

Philomatheia; Captain, Class Basketball, (1); Y. M. C. A. Cabinet, (2); Review Staff, (2), (3); Class President, (4); President, Athletic Association, (4); President, Athletic Board, (4); Editor-in-Chief, Tan and Cardinal, (4); Student Welfare Committee, (4); Baseball Manager, (4).

"You grant humanity consists of men?"

I am a man, so when I serve myself, I serve humanity."



A. CLAIR SIDDALL

DAYTON, OHIO

Philomatheia; Class President, (2); Y. M. C. A. Cabinet, (2), President, (3); Review Staff, (2); President, Publication Board, (3); Men's Glee Club, (3); Public Speaking Council, (3).

"Your word is as good as the bank, sir!"

GLADYS SWIGART

BARBERTON, OHIO

Philalethea; Class Secretary, (1); Executive Board, Cochran Hall Association, (1), Vice-President, (4); Class Basketball, (1), (3), Manager, (4); Ladies' Glee Club, (3); Manager, May Morning Breakfast, (3); Choir, (3), (4); Y. M. C. A. Cabinet, (4); Second Trustee, Philalethea, (4).

*"That best portion of a woman's life,
Her little, nameless, unremembered acts
Of kindness and of love."*

HELEN VANCE

REYNOLDSVILLE, OHIO

Cleiorhetea; Choral, (1); Y. W. C. A. Pianist, (2); Ladies' Glee Club, (2), (3).

"Music—the soul of all things beautiful."

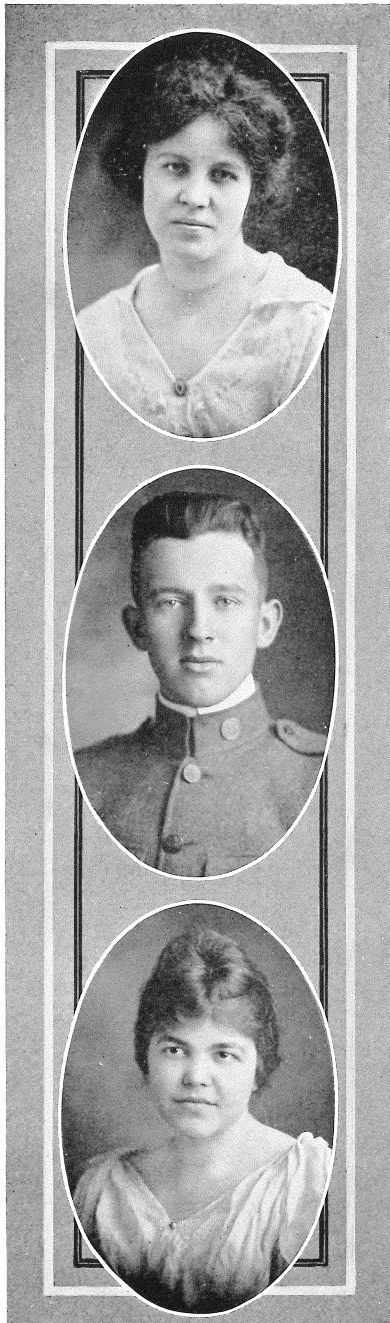
KATHERYN WARNER

DAYTON, OHIO

Philalethea; Choir, (1), (2); Class Basketball, (3); Class Play, (3); Ladies' Glee Club, (3), (4); Woman's Athletic Council, (4); Business Manager, Tan and Cardinal, (4).

*"....Cares not a pin
What they said, or may say."*





VIDA WILHELM

CANTON, OHIO

Philalethea; Choral, (1), (2); Choir, (1), (2), (3), (4); Class Basketball, (1), (3), (4); Captain, (2); Public Speaking Council, (2); Review Staff, (2); Publication Board, (2); Press Club, (3); Class Play, (3); French Play, (3); Secretary, Cochran Hall Association, (3); Student Welfare Committee, (3), (4); Ladies' Glee Club, (3), (4); Circulation Manager, Tan and Cardinal, (3), Literary Editor, (4); Y. W. C. A. Treasurer, (4).

*"The pangs of absence to remove
By letters, soft interpreters of love."*

LYMAN JOY WOOD

MT. VERNON, ILLINOIS

Philophroneia; Class Basketball, (2), (3); Track, (3); Y. M. C. A. Cabinet, (4).

"Society is no comfort to one not sociable."

AGNES MIRIAM WRIGHT

CANAL WINCHESTER, OHIO

Philalethea; Class Basketball, (1), (2); Accompaniste, Choral, (2); Y. W. C. A. Cabinet, (2); Class Secretary, (2); Secretary, Public Speaking Council, (2); French Play, (2); College Orchestra, (2), (4); Executive Board, Cochran Hall Association, (2), (4); Ladies' Glee Club, President, Accompanist, (2), Secretary, Treasurer, (4); Otterbein Instrumental Quartet, (2), (4).

*"...Lightly was her slender nose
Tiptilted like the petal of a flower."*



The Junior Class

'Twould be neither quite fitting nor proper to say,
(Just supposing I really could),
That the Junior class is the best of all four,
Though I have to admit it is good.

For it seems to me that the Sibyl will show
If our talents will rank above par,
And the class that least, may accomplish the most,
In the world, when we're all scattered far.

So I'll sum up our history, brief as I can:
'Twas in sixteen we entered the race.
Freshman Prexy, "Doc" Hall; as Sophs it was Fox,
And this year Fred Gray has the place.

We agree in all things,—it has always been thus,
Since the first year we came to O. C.
When we scrap it's with others (and we come out best),
We're a class as a class ought to be.

Let me finish my eulogy now, and I hope
That my boasting seems not "too much brass,"
For I find that in spite of my earnest desire
I can't keep from praising my class.



MARY HELEN BALLINGER

FINDLAY, OHIO

Cleiorhetea; Class Sesretary, (3); Sibyl Board, (3); Treasurer, Public Speaking Council, (3).

*"A woman good and a woman true,
Who always does what she ought to do."*

EDITH GRAY BINGHAM

IRONTON, OHIO

Cleiorhetea; Ladies' Glee Club, (2), (3); Y. W. C. A. Cabinet, (2), (3); Choral, (2); Vice-President, Public Speaking Council, (3); Exchange Editor, Tan and Cardinal, (3); Sibyl Board, (3).

"But her's are virtue, wit, and worth."

JOSEPHINE FOOR

OHIO CITY, OHIO

Philalethea; Choral, (1); Class Basketball, (2), (3), Captain, (1); French Play, (2); Third Trustee, Philalethea, (3); President, Publication Board, (3); Local Editor, Sibyl, (3).

*"The joy of youth and health her eyes displayed,
And ease of heart her every look conveyed."*





CHARLES LaMONT FOX

WESTERVILLE, OHIO

Philophronea; Basketball, (1), (2), (3); Football, (2), (3); Track, (2); Class President, (2); Athletic Editor, Tan and Cardinal, (2); Y. M. C. A. Cabinet, (3); Captain Basketball, (3); Athletic Editor, Sibyl, (3); Varsity "O", (1), (2), President, (3); Vice-President, Athletic Association, (3).

*"A smiling gallant ever found
In ladies' company."*

MAY FREEMAN

MILETUS, WEST VIRGINIA

Cleiorhetea; Science Club, (2); Art Editor, Sibyl, (3).

*"Art still has truth,
Take refuge there."*

FRED DAVIS GRAY

MONTPELIER, IDAHO

Philophronea; Tennis, (1), (2); Class Basketball, (2); Assistant Football Manager, (2); Varsity "O", (2); Football Manager, (3); Assistant Basketball Manager, (3); President, Philophronean Board of Trustees, (3); Athletic Board, (3); Class President, (3); Business Manager, Sibyl, (3).

*"It is firmness that makes the gods on our
side."*

GLADYS HOWARD

BRYAN, OHIO

Philalethea; Class Basketball, (1), Captain, (2); Publication Board, (2), (3); Public Speaking Council, (3); Executive Board, Cochran Hall Association, (2), (3); Chemistry Assistant, (3); Y. W. C. A. Cabinet, (3); Editor-in-Chief, Sibyl, (3).

*"A lady practical, imperative,
With mind compact, and clear, and self-possessed."*

HELEN KELLER

WESTERVILLE, OHIO

Philalethea; Class Basketball, (1), (2); French Play, (2); Choral, (2); Ladies' Glee Club, (2); Y. W. C. A. Cabinet, (2); Tan and Cardinal, Local Editor, (2), Assistant Editor, (2), Editor-in-Chief, (3); Choir, (1), (2), (3); Student Welfare Committee, (3); Quiz and Quill Club, (3); First Assistant Editor, Sibyl, (3).

*"Dark eyes—eternal soul of pride!
Deep life of all that's true."*

HERBERT MEYERS

JOHNSTOWN, PENNSYLVANIA

Philomatheia; Captain, Baseball, (1); Class Basketball, (1); Track, (2); Assistant Circulation Manager, Tan and Cardinal, (2); Football, (1), (2), (3); Varsity Basketball, (2), (3); Y. M. C. A. Cabinet, (3); Athletic Board, Secretary, (3); Captain, Football, (3); Student Welfare Committee, (3); Varsity "O", (2); Second Assistant Editor, Sibyl, (3).

*"No sinner, nor no saint perhaps.
But,—well, the very best of chaps."*





WARREN J. MOORE

CANAL WINCHESTER, OHIO

Philophronea.

*"An idle life is the life for me,
Idleness spiced with philosophy."*

ARTHUR PEDEN

WESTERVILLE, OHIO

Philophronea; Volunteer Band, (1), (2),
(3); I. P. A., (1), (2).

*"Friends, if we be honest with ourselves
We shall be honest with each other."*

EVELYN LAVILLA PIFER

CLEVELAND, OHIO

Cleiorhetea; Mandolin and Guitar Club,
(3); Sibyl Board, (3).

*"Virtue is true happiness,
Excellence true beauty."*

CHALMER A. POTTS

WESTERVILLE, OHIO

Philophronea; Volunteer Band, (1), (2), (3); Sibyl Board, (3).

"It is not good for man to live alone."

KENNETH J. SCOTT

HARRISON, OHIO

Philophronea; Track, (2); Secretary, Science Club, (2); Sibyl Board, (3); Vice-President, Y. M. C. A., (3).

"Silent, very silent. Who may know what a man thinks

When he says naught?"

CARL LEWIS SMITH

CANAL FULTON, OHIO

Philomatheia; Class Basketball, (1), (2), (3); Football, (2), (3); Varsity "O", (2); Athletic Board, (3); Class Treasurer, (3); Assistant Business Manager, Sibyl, (3); Captain-Elect, Football, (3).

"Much may be said on both sides."





MARY TINSTMAN

EAST PALESTINE, OHIO

Philalethea; Choral, (1); Class Basketball, (1), (2), Manager, (3); French Play, (2); Public Speaking Council, Secretary, (3); First Assistant Circulation Manager, Tan and Cardinal, (3); Editor, Military Department, Sibyl, (3).

"She was more than over shoes in love."

LILLIE WATERS

GRAFTON, WEST VIRGINIA

Cleiorhetea; Sibyl Board, (3).

"The smile that won't come off."

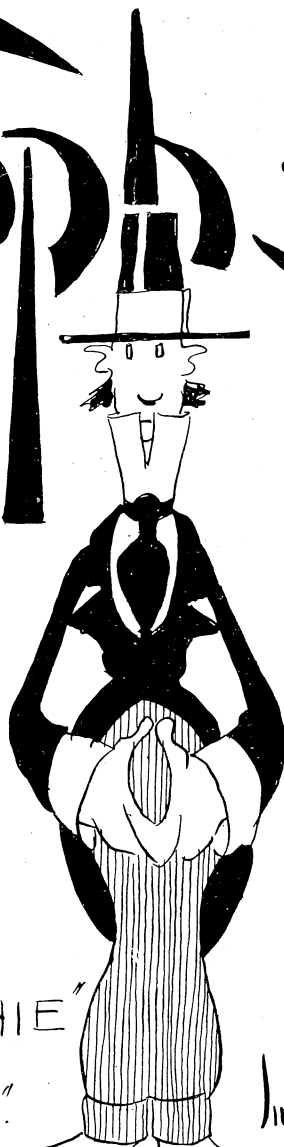
LAURA WHITE

WESTON, WEST VIRGINIA

Cleiorhetea; Y. W. C. A. Cabinet, (3); Sibyl Board, (3).

"It's safer being meek than fierce."

"Sophs."



AS THE "FRESHIE"
SEES THE
"SOPH."

Jim Henderson





Sophomore

I am sitting at my table and the sun is sinking low,
I am thinking of the days that have gone by;
Of the days when I was younger, as this poemlet will show,
When I was just a Freshman wee and shy.
When the autumn leaves were falling and the trees were in their prime,
Then eighty sturdy Freshmen came this way;
While all the "old" folks laughed and joked, we had a lonesome time,
For we were awfully home-sick, I should say.

Sophisticated Sophomores—a class of high renown
Tacked up their posters on most every tree,
Forbade us walking on the grass or even out of town,
While bright green ribbons floated in the breeze.
One day we had a meeting and decided we were strong—
The bravest, brightest class in Otterbein;
"Bill" Vance was made our president before we tarried long,
May 'twenty-one for-ever rise and shine.

We had a gay old "push," and it was mighty fine, they say,
Though it poured down rain with vengeance all the while;
The Sophomores cut capers in the "gym" not far away,
But spite of that we did things up in style.
The winter went a-flying and the spring had come again,
When we banqueted the Juniors one fine night,
And everyone was happy, for they came both girls and men,
And we tried to treat our honored guests just right.

We went home for the summer and when we came back here,
We weren't near as timid as before;
We elected Manson Nichols for our president this year,
And our class was led triumphantly once more.
And now the story's ended and I hope I have told it true,
We know our class will turn out strong and fine,
But as we're only Sophomores, we will stay a year or two,
And always cheer for our dear Otterbein.

E. A. H. '21.



Sophomores

Bancroft, Thomas

Bay, Donald

Bechtolt, Helen

Billman, Marie

Blue, J. F.

Campbell, Helen

Cave, Edith

Clark, Lois

Collins, Maurice

Cornet, Wendell

Darling, Evelyn

Deem, Ruth

Deitsch, Mildred

Dellinger, Edna

Dixon, Florence

Durrant, Donald

Dugan, Charles

Eubanks, Ethel

Frank, Myrna

Given, Olive

Goodman, Rose

Goodman, Hal

Halderman, Harold

Hancock, Bertha

Harley, Esther

Heil, Carl

Hooper, Edna

Hovermail, U. P.

Howe, Merrill

Leonard, Homer

McCabe, Elizabeth

Moore, Howard

Miller, Marjorie

Monn, Chester

Nichols, Manson

Pace, Leland

Patterson, Violet

Payne, Hazel

Phillippi, Dale

Pifer, Margaret

Sanders, Albert

Sebert, Marvel

Sellers, Lois

Snelling, Ida Marie

Southwick, Sewell

Stubbs, Pauline

Sweazy, Carl

Stearns, Merton

Vance, William

Vernon, Ralph

Warson, Lucille





Freshmen

Hail! ye sons of Otterbein
Harken to these words of mine,
Oft in future years you'll dwell
In thought upon these things, I tell.

'Twas in the famous year 'eighteen,
A Freshman class like ne'er had been
Came to old Otterbein and they
Will be remembered many a day.

They entered school two hundred strong
And showed the 'Sophs' that they'd been wrong,
In thinking Freshmen were all green
And never should be heard nor seen.

Our Uncle Sam, he helped us out
And Sophomore notions put to route,
To see the Freshmen 'non-coms' drill
The upper classmen, gave a thrill.

And in the classroom it was found,
As well as the athletic ground,
That Freshmen were the ones to shine
And take the honors every time.

Though Freshmen come and Freshmen go
The time will never come, I know
When you will find a class more true
To Otterbein, than "twenty-two."

J. G. H. '22.



Freshmen

Abbott, Alice	Ferguson, Cecil	Lincoln, Alice	Ricker, Frank
Abbott, Lloyd	Ferguson, Raymond	Locke, Ralph	Reid, Karl
Acker, Charles	Fishbaugh, Anthony	McClay, Maurice	Roberts, Walter
Agler, Doyt	Fisher, Beatrice	McCoy, Leo	Robinson, Margaret
Ahearn, Arthur	Fox, Robert	Macdonald, J. S.	Roeder, Dale
Ahr, William	Freeman, Gladys	McElwee, Gale	Rogers, Ferman
Albright, Estel	Freeman, Harold	McElwee, Merle	Rohrbaugh, Fred
Allen, Emmett	Frisinger, Lowell	McEntire, Frank	Ross, Robert
Anderson, Clarence	Ganoe, Claude	Main, Donald	Sample, Herald
Anderson, Howard	Garrison, Clarence	Manbeck, Herman	Sausser, Claron
Anderson, S. R.	Gehm, Edwin	Manchester, William	Schreck, Arthur
Andrews, Otis	Gibson, Lowell	Martin, Robert	Schwartz, Glen
Augustine, Lester	Gill, Charles	Massman, Glen	Sewell, Clarence
Baker, Warren	Gipe, Lee	Mathias, Wilbur	Seyfried, Faith
Bancroft, Thomas	Goddard, Raymond	Mattern, Harold	Shafer, Rhea
Barnhart, Lyall	Goff, Floyd	Mayne, E. T.	Shaffer, Ralph
Bartelbaugh, David	Gottfried, Calvin	Meeker, Harold	Sharp, Paul
Blagg, Virginia	Grove, Harry	Melkus, F. W.	Shull, Mildred
Blanchard, George	Hahne, Eugene	Menke, Howard	Shy, Herman
Boone, Emmet	Hale, Vallie	Metsker, John	Sims, Ernest
Bowlus, Clarence	Hanawalt, Herbert	Meyer, Gustave	Sink, Lloyd
Brane, Dennis	Hansel, Roscoe	Mignery, Merrill	Skinner, Martha
Brenizer, Gladys	Harner, Forrest	Miller, Elry	Smith, Herbert
Brown, Dorris	Harold, Wendell	Miller, Harvy	Smith, Reynolds
Burgot, Walter	Harris, Paul	Mills, Nell	Smith, Vinton
Burgot, William	Heeter, Bernice	Mitchell, Lester	Snyder, Earl
Burtsch, Fred	Hite, Marion	Moore, Merton	Sprout, Paul
Burtner, Sheldon	Hitt, Loy	Moore, Olen	Stevens, Merl
Byers, Faye	Hecht, Emerson	Morris, Robert	Stoner, Frank
Camp, Ralph	Hogan, Maurice	Morrison, Howard	Strete, Allen
Campbell, Ruth	Hollis, Theodore	Mullin, Edward	Swinger, Velma
Carmack, Clarence	Householder, Eldo	Mullin, Genevieve	Switzer, Park
Carmean, Leroy	Howard, Gordon	Muncy, Wendell	Taylor, Henry
Carpenter, Harold	Howell, Ralph	Mundhenk, Joe	Titsch, Robert
Carter, Harold	Hunt, George	Myers, Joseph	Townsend, Eugene
Chamberlin, Clair	Hunter, Alice	Noel, Paul	Trangenstein, Henry
Chapler, Harry	Hutton, Virgil	Ober, Mary	Turner, Glen
Clapham, Leah	Iler, Fred	Oliver, Ralph	Tussing, Robert
Clapp, W. H.	Iler, Homer	Orebaugh, John	Ulery, Everard
Clark, John	Jackson, Earnest	Owen, Milton	Ulry, Guy
Clay, George	James, Beryl	Palmer, Arthur	VanAtta, Fred
Conely, Charles	Jewell, Clarenre	Palmer, Harvey	Watkins, Franklin
Corwin, Gladys	John, Cletus	Parker, Flint	Watson, John
Creath, John	Johnson, Paul	Pearce, Marie	Watson, Robert
Cring, Walter	Judson, Fred	Pence, Paul	Wright, Stanford
Davis, William	Klepinger, Murn	Perfect, Everett	West, Robert
DeHoff, Ilo	Kurtz, John	Plate, Francis	Wickline, William
Dellinger, Ilo	Larimore, Phoebe	Potts, Martin	Wilson, Raymond
Demerest, Darwin	Lawrence, Orville	Powell, Roger	Wilson, Sara
Doran, Ora	Lea, Arch	Pulse, Charles	Windon, Goldie
Dudgeon, Albert	Leffel, George	Rayot, Lauren	Woefler, Howard
Eby, Edith	Lehman, Herman	Redman, Harry	Wright, Robert
Eadministon, John	Leichleiter, Wesley	Reed, Winifred	Zebold, Cloyd
Eiselt, Adolf	Leiter, Harold	Rice, Howard	Zingery, Leslie
Elliot, Eurie	Lemons, Roy	Richardson, Harry	
Evans, Curtis	LeVier William	Richards, Harold	
Fellows, Rea	Liddy, Erwin	Richmond, Stanley	





The School of Music



OTTERBEIN'S School of Music is a vital part of the institution. In existence for many years, it has grown until at the present time it holds a place of undisputed importance in the college. Those who are accustomed to the regular student activities for which the School of Music is directly responsible, scarcely realize to what an extent this department has grown into the life of the school, or what a vacancy would result if it were suddenly to be taken away.

Exceptional advantages are offered both to students who expect to study music as a main course, and to those who wish to take it up merely as a side line to their literary work. For the former, two courses are offered, one leading to a diploma, and the other to a degree of Bachelor of Music. More advanced musical study, as well as a considerable amount of literary work, is required for the attainment of the Bachelor's degree.

Instruction is offered in voice, piano, pipe organ, and string instruments. Besides the private lessons, there is a class in Harmony, Counterpoint, History of Music, Theory of Music, and a course offered for teachers and supervisors of public music. In addition to the regular conservatory work, several musical organizations are maintained, which give concerts from time to time. Membership to any of these organizations is granted to any student, who is able to meet the musical requirements.

The future of the School of Music is most promising. The general desire for good music, and the increased demand for skilled musicians should make certain the growth of the department. But even today, when perhaps it has not reached its highest attainment, the School of Music deserves only commendation for the high standard of its work, for the untiring efforts of its instructors and for the exceptional quality of its musical teaching.

INSTRUCTORS OF THE MUSIC DEPARTMENT

Glenn Grant Grabill.....	Director of Conservatory
Lula Baker.....	Instructor of Piano
Maude Hanawalt.....	Instructor of Piano
Arthur R. Spessard.....	Instructor of Voice
Earl Hopkins.....	Instructor of Stringed Instruments



The Home Economics Department

The Home Economics Department of Otterbein College began its fourth year September 1918. Its growth and popularity have kept pace with the other departments of the College. Never in the history of Home Economics has the work been more appreciated or more truly functioned than during the war. All over the United States girls from the departments of Home Economics have served as cooks, dietitians, aids to nurses, and seamstresses. Our girls did their bit in the respective lines when the calls came.

The cookery classes and serving classes have observed the rules for conservation of food and cloth and at the same time have been able to make the work worth while.

Mrs. Nellie Lowe Noble, director of the department, held positions of honor and responsibility at Miami University and for the past three years has served Cochran Hall as Dietitian. Last year Mrs. Noble organized, equipped, and directed the initial year of Home Economics in the Westerville High School. Although this is the youngest department of Otterbein, Mrs. Noble's confidence in the value of the training for the college girl, plus the interest taken in the work, insures a promising future.

M. B. '19.



HOME ECONOMICS KITCHEN AND DINING ROOM





The Art Department

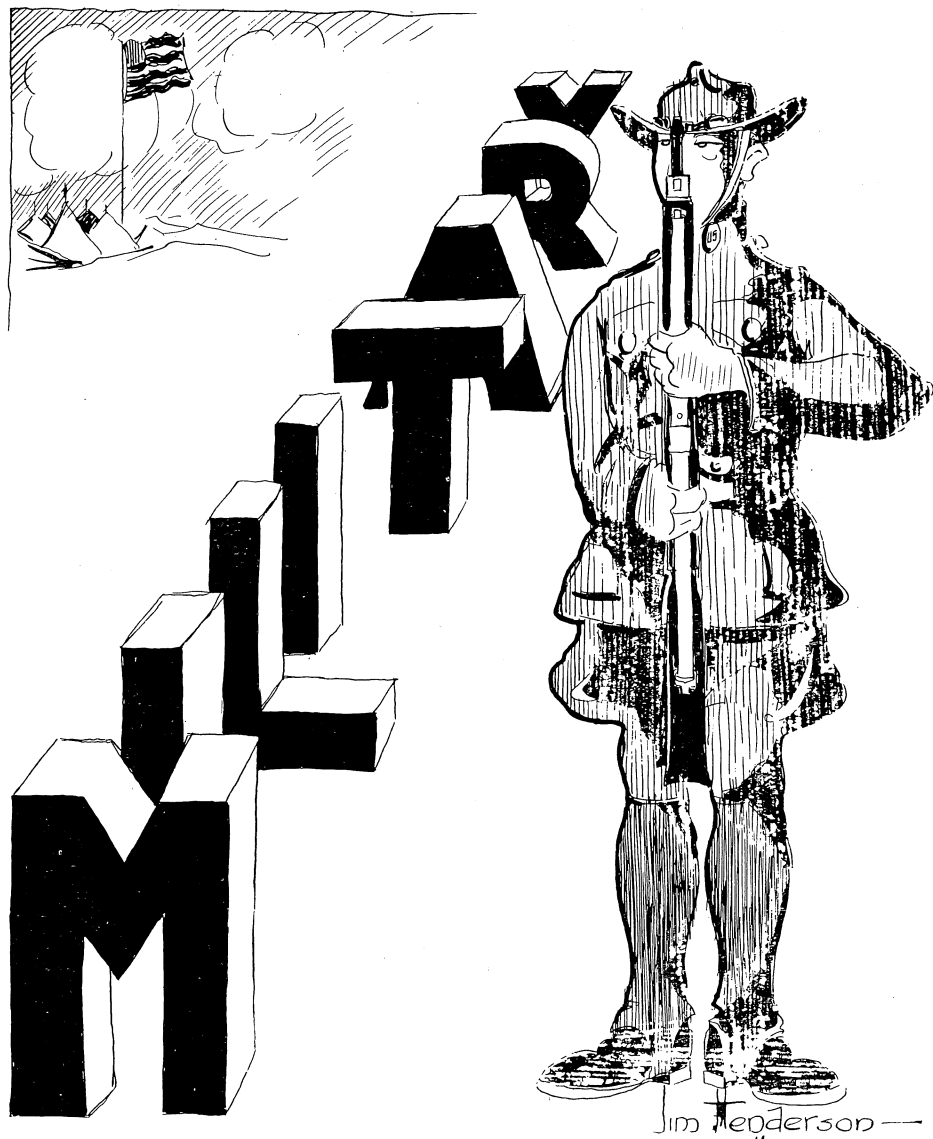
The Art Department of this College aims to maintain a high standard of culture, and through consistent effort, the instructors are instilling in the students the appreciation of all that is beautiful. Although the department is small in number, their work is of exceptional value and is felt through the entire college.

There are three main departments in this school: general art, which leads to a B. F. A. degree; normal art which trains the student to teach art to the child; and applied design, which deals with the various arts and crafts.

The student enrollment for this year is as follows:

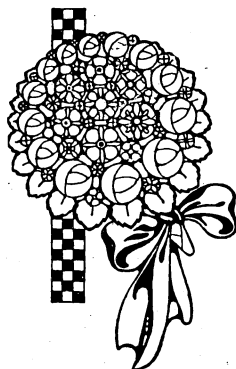
Alice Abbott
 Wilma Adams
 Ruth Asire
 Helen Bovee
 Edna Dellinger
 May Freeman
 Leona Hendrix
 Dorothy McClanningham
 Fay Morrison

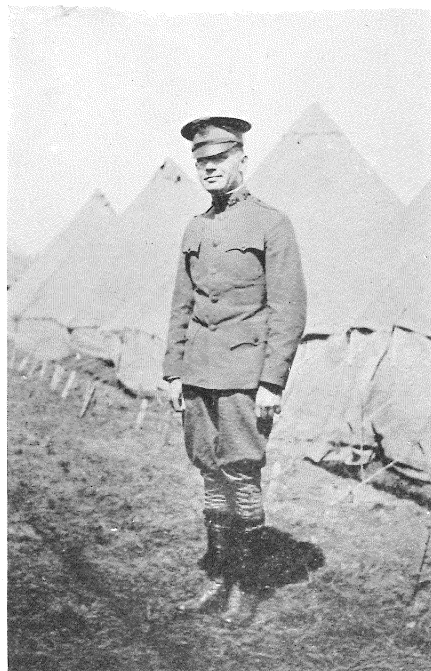
Antionette Rauschkolk
 Beatrice Shafer
 Marie Staats
 Theo. Staats
 M. Stevenson
 Elizabeth Young
 Mary Siddall
 Leora Gouchenour



In Memoriam

1. Harold E. Rolland—died of spinal meningitis. Somewhere in France. April 24, 1918.
2. Second Marine Winton Paul Burtner—killed in action at Chateau Thierry. June 14, 1918.
3. First Lieutenant Ira Millard Dempsy—died of pneumonia at Eagle Pass, Texas. October 15, 1918.
4. Wallace Miller—died of wounds. Somewhere in France. November, 1918.
5. William C. Miller—died of pneumonia at Utica, New York. December 23, 1918.
6. Curtis K. Young—died of bronchial pneumonia. Somewhere in France. February 13, 1919.





Lieutenant Orren Ivan Bandeen

Otterbein can well be proud to claim Lieutenant O. I. Bandeen as one of her brave and loyal sons, for during the recent war he ranked among the distinguished men of the A. E. F.

Mr. Bandeen early entered the Officers' Training School at Fort Snelling where he was commissioned a second lieutenant as a reward for faithful and efficient work while in training. He was then ordered to report at Fort Dodge where he was permanently assigned and sailed on October 16, 1917, with the 166th Infantry of the Rainbow Division, for France.

The over-seas service of Lieutenant Bandeen speaks for itself. Entering the lines a second lieutenant he demonstrated his bravery and was given honorable mention for the same. So effective were his operations against the Huns that he was awarded the Croix de Guerre, and given a promotion to a First Lieutenancy.

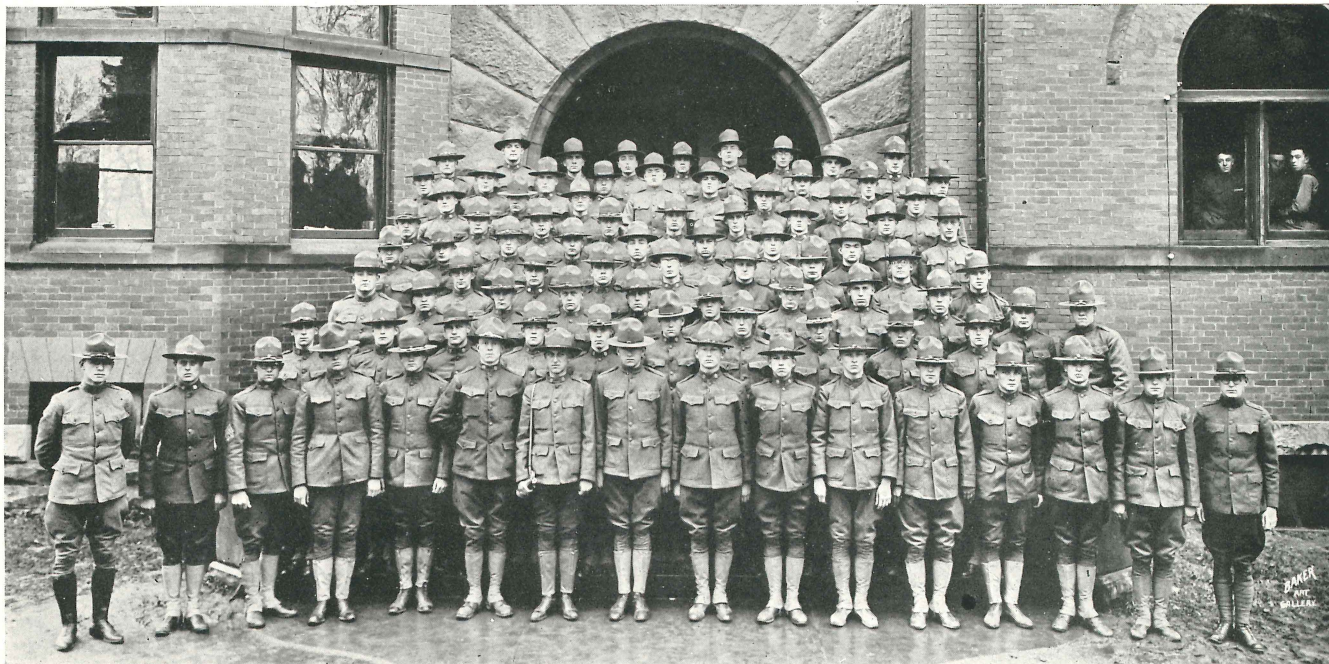
Lieutenant Bandeen is a graduate of the Class of 1911, and the only Otterbein man to have received a distinguished honor medal.



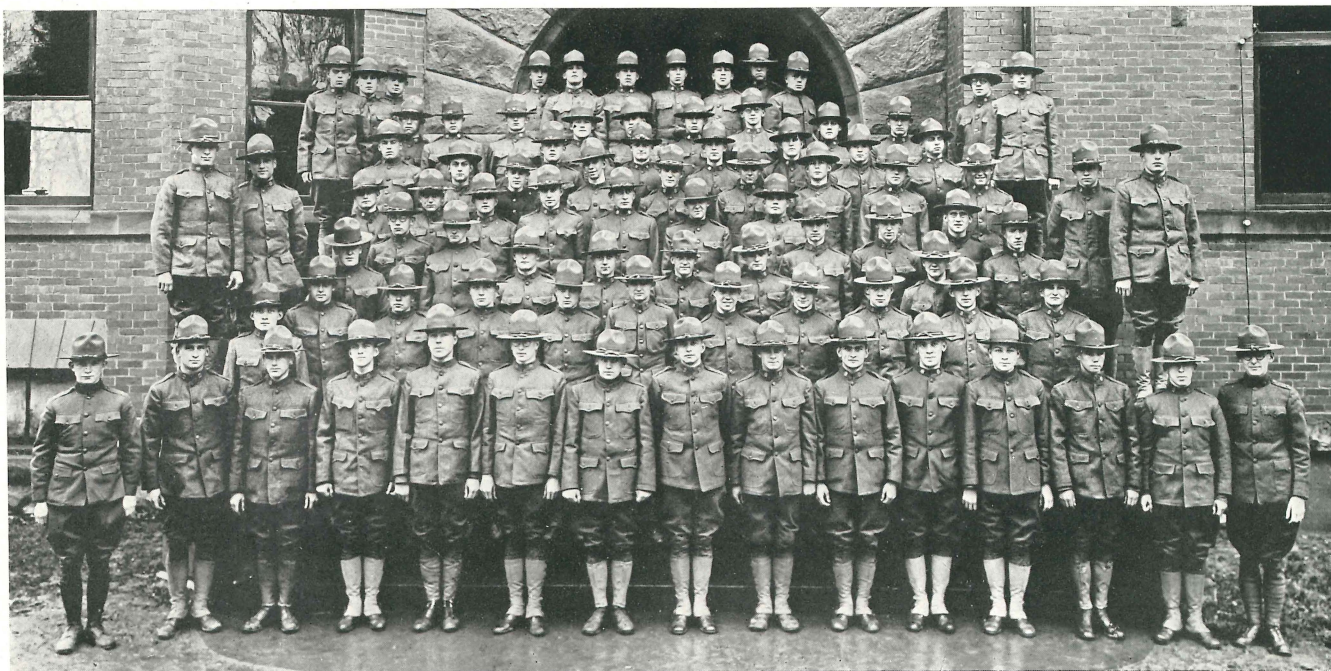
LIEUTENANT FARRAR

Students' Army Training Corps

A new element was introduced into our college life last October by the organization of the Otterbein unit of the Students' Army Training Corps, under the command of Lieut. Farrar. The unit, composed of two companies, was organized under the direction of the United States Government, for the purpose of giving men between the ages of eighteen and twenty-one the opportunity of receiving college work, together with the work required by the government. The intention was, at the end of three months to send these men to camps where they would receive further and special training. The S. A. T. C., however, was in existence little more than one month when the armistice terms were signed, thus making it unnecessary for the retention of the organization.



S. A. T. C. Co. A.

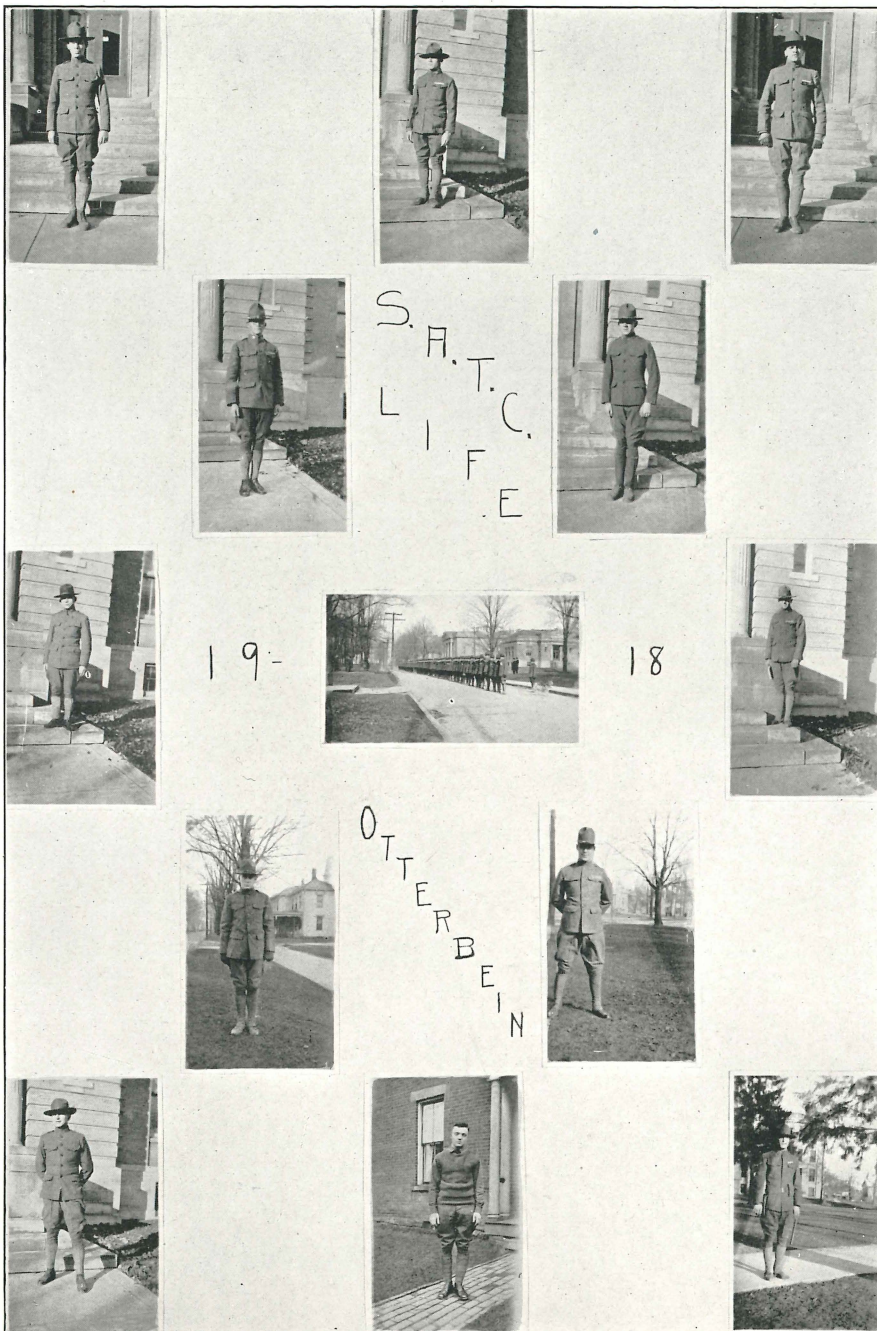


S. A. T. C. Co. B.

In the
Service











PHILAETHIA

Philalethea

Motto: *Veritas Nostrum Clipeum*

Colours: *White and Old Rose*

The Philalethea Literary Society was founded in 1851 as the outcome of a suggestion by Mrs. John Haywood (Sylvia Carpenter) who felt the need of greater literary activity in the college. It was not until 1859, however, that the society was incorporated, thus becoming a distinct organization.

Mrs. Benjamin R. Hanby, of the class of 1857, is the oldest living member.

When the present administration building of the college was constructed after the disastrous fire of 1870, Philalethea established her home—the rose and white hall, which, for many of Otterbein's alumnae, holds memories of true and lasting friendships.

The motto, "Veritas Nostrum Clipeum," is the spirit of Philalethea put into words, the expression of the ideals and traditions that are guiding the present members of society, the standard that will assure the future.

G. A., '19.

ACTIVE MEMBERS

Lois Adams	Edith Hahn	Harriot Raymond
Grace Armentrout	Margaret Hawley	Lenore Rayot
Marie Billman	Leona Hendrix	Martha Skinner
Virginia Blagg	Gladys Howard	Ida Marie Snelling
Virginia Burtner	Bertha Hancock	Pauline Stubbs
Fay Byers	Helen Keller	Gladys Swigart
Helen Campbell	Jessie La Rouché	Mary Tinstman
Lois Clark	Florence Loar	Katheryn Warner
Evelyn Darling	Elizabeth McCabe	Eleanor Whitney
Ruth Drury	Marjorie Miller	Vida Wilhelm
Josephine Foor	Nellie May Moon	Agnes Wright
Myrna Frank	Genieve Mullin	
Rose Goodman	Lois Niebel	

ASSOCIATE MEMBERS

Helen Bechtold	Florence Maniott	Rhea Shaffer
Gladys Breneizer	Gladys McClure	Theo Staats
Gladys Corwin	Nell Mills	Marie Staats
Beatrice Fisher	Merle McElwee	Velma Swinger
Bernice Heeter	Fay Morrison	Fern Sapp
Ida Kittle	Marie Pruden	Helen Weaver
Alice Lincoln	Faith Seigfried	



CLEIORHETEA

Cleiorhetea

Motto: *Non Palma Sine Labora*

Colors: *Light Blue and Tan*

Cleiorhetea, founded in 1871, is a distinctive college unit, pledged loyally to every measure leading to a Greater Otterbein; and whose underlying purpose is to meet the various cultured needs of college women.

She takes pride in having initiated the following progressive steps in Otterbein: the establishment of a woman's orchestra (1889), a formally organized society glee club (1890), and a semi-professional quartet (1895); the writing and acting of a historical play depicting episodes in Otterbein life (1913-14); the publication of a copyrighted Otterbein Society Song (1917); the presenting of the first musical tea for the dedication of a baby grand Mason-Hamlin piano (1917).

For forty-seven years, Cleiorhetea has fulfilled a social and civic mission by qualifying her graduates for leadership in religious and cultured life.

M. G., '19.

ACTIVE MEMBERS

Alice Abbot	Freda Frazier	Evelyn Pifer
Edith Bingham	May Freeman	Margaret Pifer
Meryl Black	Miriam George	Mary Ream
Helen Bovee	Olive Given	Marvel Sebert
Mary Ballinger	Ester Anne Harley	Beatrice Shaffer
Edyth Cave	Ruth Hooper	Mary Siddall
Lorna Clow	Edna Hooper	Mildred Shull
Cleo Coppock	Alice Hunter	Mae Sellman
Leah Clapham	Viola Havermale	Helen Vance
Mildrid Deitsch	Gladys Lake	Laura White
Edna Dellinger	Elma Lybarger	Lillie Waters
Florence Dixon	Audry Nelson	Jessie Wilson
Ethel Eubanks	Violet Patterson	
Edyth Eby	Florence Perfect	

ASSOCIATE MEMBERS

Wilma Adams	Mary Ober	Phyllis Stout
Lora Addis	Hazle Payne	Ferne Sweazy
Ilo De Hoff	Margaret Robinson	Ella Wells
Elizabeth Fontnell	Way Richardson	Gladys Yokum
Harriet Hays	Lois Sellers	



PHILOMATHEA

Philomatheia

Motto: *Quaerere Nostrum Studium Est*

Colors: *Black and White*

Throughout the history of Otterbein College one of her greatest assets has been the facility for literary work. Activity along this line began in 1854 with the founding of the "Otterbein Philomathean Literary Society." In 1857 this organization was divided into two sections, one of them adopting the name of the former society.

The trials of the new Philomathean society were many, but, by careful, earnest work she has reached her present state of prosperity and success.

Although Philomatheia is somewhat depleted by the late war, she is thriving and succeeding in holding her own. She has borne herself admirably in the recent struggle for world freedom. A magnificent service flag now hangs in her hall, significant of a great fact, namely that Philomatheia has not been wanting in patriotism. Philomatheia is proud of her Alma Mater, as Otterbein may well be proud of Philomatheia.

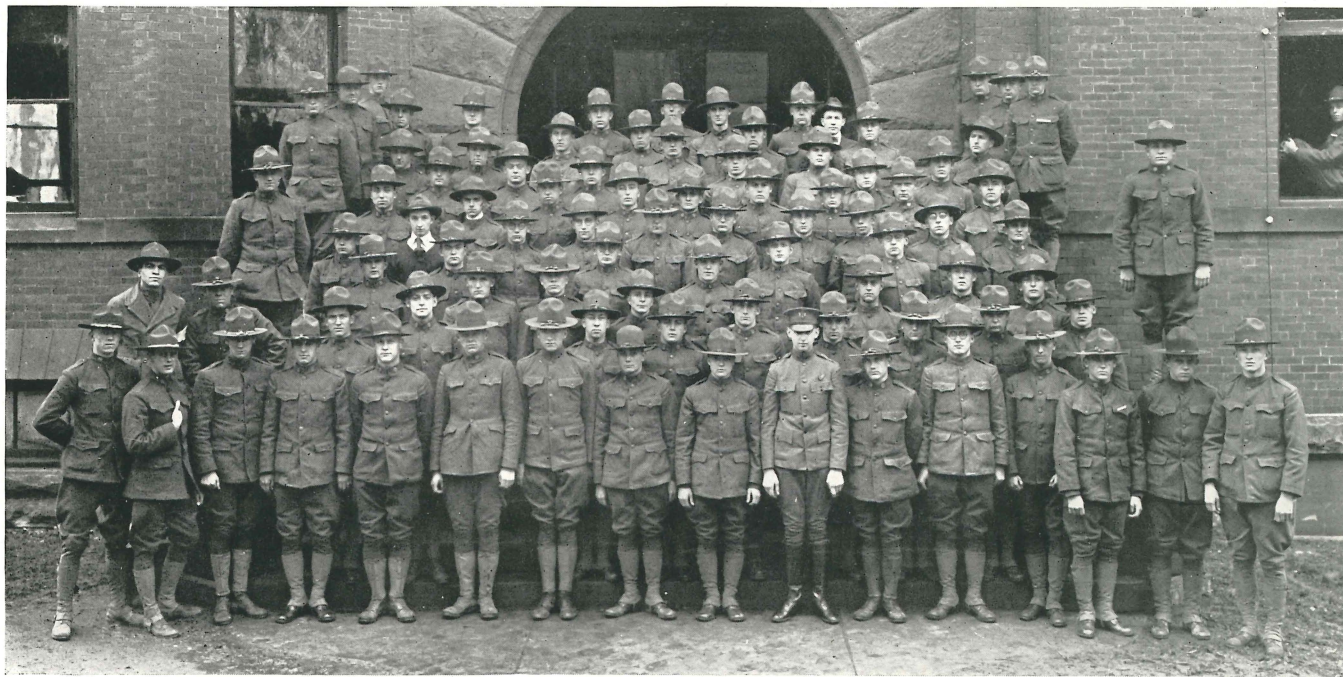
L. P., '22.

ACTIVE MEMBERS

Bartlebaugh, D. W.
Bay, D. C.
Halderman, H. D.
Harmelink, R. J.
Harmon, L. B.
Howe, M. L.
Huber, R. H.
Martin, R. U.
Meyers, H. H.
Michael, H. E.
Michael, L. J.
Moore, H. F.
Pace, L. E.
Replogle, L. K.
Siddall, J. C.
Smith, C. L.
Vernon, R. E.
White, G. W.

ASSOCIATE MEMBERS

Busch, C. R.
Dano, Leslie
Dellinger, I. S.
Durrant, Donald
Freeman, Harold
Gleason, R. H.
Hollinger, Raymond
James, Beryl
Lehman, H. F.
Leiter, H. G.
Mundhenk, J. D.
Powell, Roger
Richmond, Stanley
Titsch, R. A.



PHILOPHRONEA

Philophronea

Motto: Φιλία Καὶ φρονησις

Colors: *Blue and Gold*

The beginning of the history of the Philophronean Literary Society was in May 1857, when the Philomathean Society was divided into two separate bodies; one of which retained the old name, the other named itself Zetaphronea.

When Mt. Pleasant College of Pennsylvania united with Otterbein, the Philohetean Society of Mt. Pleasant College united with the Zetaphronea Society. This was effected on condition that the new organization be called the Philophronean Literary Society.

During the past two years many Philophroneans heard their country's call and responded in a noble manner. This caused a severe strain on the society's strength. This year, however, the tension has been removed by the addition of twenty-seven new active members. The achievements of Philophronea have been many, and her future career will eclipse all past achievements.

ACTIVE MEMBERS

Askew, R. H.	Hitt, L. A.	Roberts, W. N.
Allbright, W. R.	Hovermale, U. P.	Scott, K. J.
Barthlow, E.	Howard, J. G.	Sprout, P. V.
Brane, D. D.	Janes, O. A.	Sweazy, C. M.
Clay, G. E.	Johnson, R. M.	Sanders, A. M.
Conley, C. C.	Moore, W. J.	Sterns, A. M.
Cornetet, W. H.	Noel, P. K.	Stoner, F. N.
Davison, H. J.	Neighbor, P. G.	Wells, S. A.
Evans, W. R.	Nichols, M. E.	Wood, L. J.
Fox, C. L.	Palmier, R. H.	Wood, H. M.
Glouner, G. L.	Peden, A. P.	Wright, R. C.
Gray, F. D.	Peters, B. C.	West, R.
Hahn, E. A.	Pulse, C. K.	

ASSOCIATE MEMBERS

Ahearn, A.	Gibson, O.	Owen, C.
Anderson, C. E.	Harris, P. J.	Parker, F.
Carter, H. L.	Hanawald, H.	Potts, C.
Doron, O.	Judson, F. C.	Richards, F.
Dudgeon, A. C.	Leightleiter, J. W.	Rayot, L. D.
Evans, C. W.	Morrison, H. J.	Rohrbaugh, F.
Fishbaugh, A. W.	Miller, E. N.	Ross, R. D.
Fox, R. H.	Mullen, E. C.	Wilson, A. R.
Frisinger, L. G.	Owen, O.	Zebold, C.



Y. W. C. A.



Y. W. C. A. CABINET

The Young Women's Christian Association

The Young Women's Christian Association contributes, in a very great degree, to the religious life of Otterbein. At the regular Tuesday evening meetings, helpful topics are discussed by the girls. Special speakers and music, which are frequently presented, add much to the interest of the sessions. An effort is made to deepen the spiritual life of the girls by Bible and Mission Study classes.

An opportunity for social service is afforded at different times during the year. At Thanksgiving and Christmas, baskets are distributed among the poor, and at Easter, flowers to the sick of the town.

Nor is the social life of the girls neglected. In cooperation with the Young Men's Christian Association, a reception for new students is held at the beginning of each year. Later the girls give an Eagles Mere Lawn party to arouse enthusiasm for the Eagles Mere Summer Conference.

Mrs. Jessie Weir LaRouche has shown admirable qualities of leadership, as our president this year. Her cabinet is composed of the following:

Vice-President	Ruth Hooper
Corresponding Secretary.....	Marvel Sebert
Treasurer	Vida Wilhelm
Recording Secretary.. ..	Pauline Stubbs

COMMITTEE CHAIRMEN

Bible and Mission Study.....	Edna Hooper
Music	Gladys Lake
Social Service.....	Esther Harley
Social	Gladys Swigart
Religious Meetings.....	Edith Bingham
Finance	Ruth Drury
Alumna	Margaret Garver



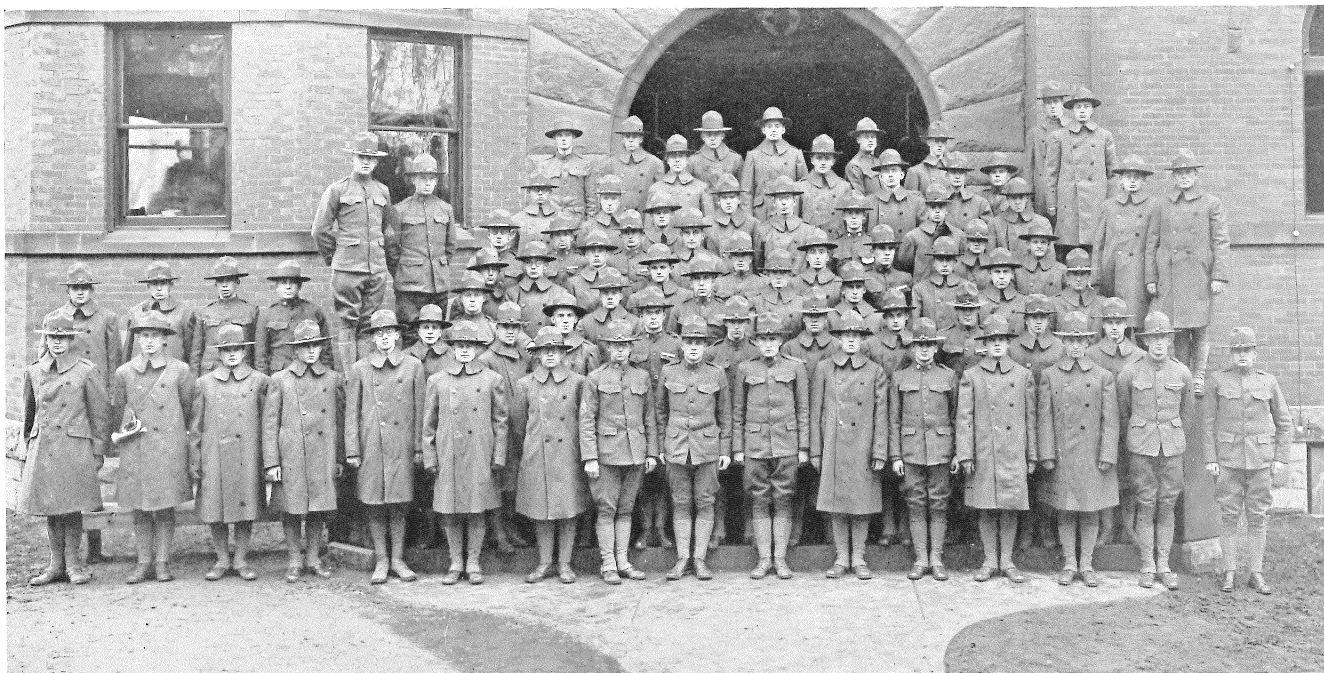
The Volunteer Band

This organization is composed of a number of young men and women bound together in a peculiarly close and helpful relationship by the sacred ties of a common purpose. Only those become members who have signed the Volunteer Declaration "to become foreign missionaries, if God permit." Weekly meetings are held in the Tower Room of the Association Building. The members meet together for prayer and fellowship, as well as for the study and discussion of various missionary topics. At frequent intervals, special speakers are engaged to speak to the Band, and it is always a joy to have present, whenever possible, our out-going or returning missionaries.

Nearly fifty missionaries, formerly Otterbein Student Volunteers, have sailed in past years to serve their Master in lands across the sea. Since January 1, 1918, the following Volunteers from Otterbein have gone to foreign fields: Miss Agnes Drury, '14, Dr. A. D. Cook, '12, Mrs. A. D. Cook, '13, Miss Myrtle Metzger, '14.

Tho among the smallest of Otterbein's organizations, the Volunteer Band is felt by the members to be the most conducive to spiritual strength.

H. R. '19



Y. M. C. A.

Y. M. C. A.

Along with the advance, which the work of the Young Men's Christian Association has had in the world at large, there has been an equal advance in the position of the organization in the College.

Otterbein has had reason to be proud of her Association, as the local organization has always stood in the front rank among the Colleges of the State. It being one of the first in the State to have a building exclusively for Association purposes, and among the first in the support of State and international work. The "Y" has a record which ought to inspire it to do great things in the future. The advent of the S. A. T. C. in the fall of 1918, and the unsettled conditions resulting therefrom, interrupted the work of the student officers, however a secretary was secured through the State office and the work has been under his complete supervision.

Since the demobilization of the S. A. T. C. the local Association has returned to the condition existing in other years, with the exception that the secretary will be retained at least for the remainder of the year. It is planned that the work of the Association will be somewhat broadened to include activities for the young men of the town. Meetings are held every week for the discussion of problems relating both to the life of the college man and to the big questions of the world outside. Not the least of the improvements made is the re-furnishing of the parlors of the Association building, which have been almost useless. Comfortable chairs were added, the windows recurtained, and a few games furnished for the purpose of making this a good place for the men of the college to gather. The secretary makes the building his headquarters and is glad to counsel with the men and help them in any way he can. It is hoped that the field of the Otterbein "Y" Association may be so broadened this year as to warrant the employment of a secretary permanently.

Y. M. C. A. Cabinet

President	R. J. Harmelink
Vice-President	Kenneth Scott
Recording Secretary	D. C. Bay
Corresponding Secretary	B. C. Peters
Treasurer	Gordon Howard

COMMITTEE CHAIRMEN

Devotional	L. K. Replogle
Bible Study	L. B. Harmon
Missionary	B. C. Peters
Membership	Kenneth Scott
Finance	J. G. Howard
Social	C. L. Fox
Music	H. H. Meyers
Employment	L. J. Wood
House	H. F. Moore
Deputation	H. E. Michael
Boys	H. H. Meyers



SIBYL BOARD

The 1919 Sibyl

The Sibyl is a biennial publication, compiled by the Junior class. Its main purpose is to instill in all the students and alumni the love and devotion they owe their college.

Many years ago there lived in the land of Apolla, the beautiful Greek goddess Sibylla, who loved the sun god and desired to find a way in which to prove it to him. Previous to this time, Apolla had scattered throughout the World small leaves from the oak tree of knowledge, upon which had been written in gold, the names and fates of individuals. Sibylla, knowing this, searched far and wide, over rough and rocky paths, in order to gather and present them to Apolla as a token of her devotion. After years of difficult searching, she placed before Apolla her nine ponderous volumes, and thus having completed her work, vanished from the World.

Just as Sibylla, through love for Apolla, searched far and wide amid many difficulties for the oak leaves, so the Junior class has endeavored through devotion for their Alma Mater, to collect the golden leaves of our college life here at Otterbein. We realize that we too must soon vanish from the life here, but we trust our 1919 Sibyl will be a lasting memorial for the class of 1920.

Sibyl Board

Editor-in-Chief	Gladys Howard
Assistant Editors.....	Helen Keller H. H. Meyers
Business Manager.....	Fred D. Gray
Assistant Business Manager.....	C. L. Smith
Local Editors.....	Josephine Foor Mary Ballinger
Faculty Committee.....	Laura White
Class Committee.....	H. H. Meyers
Music Committee.....	Lillie Waters
Home Economics Committee.....	Laura White
Association Committee.....	Evelyn Pifer Chalmer Potts
Military Committee.....	Mary Tinstman
Society Committee.....	Kenneth Scott
Photographer	Warren Moore
Art Committee.....	Mae Freeman
Athletic Editor.....	C. L. Fox
Forensic Committee.....	Edith Bingham



T. & C. STAFF

The Tan and Cardinal

Every live school needs a live paper, if it would keep and add to its enthusiasm. The Tan and Cardinal, published weekly, is that type of college paper. It was established in 1917, to succeed The Otterbein Review and The Aegis, the one a weekly, controlled by the Philomathean Literary Society, the other published every month, controlled by the Philophronean Literary Society.

The first staff of the new paper was composed of both men and women, and at the second election in March of 1918 the same rule was observed. In the fall of last year, however, the advent of the S. A. T. C. prevented the men of the staff from devoting any time to the work of publishing the paper. For this reason a new staff was elected, composed entirely of girls. It was the first adventure of its kind for the girls of Otterbein, but they have proved themselves equal to the responsibility, and have published a paper which is, in the opinion of many, superior in literary quality to the paper of former years.

Now that normal conditions again exist, next year's staff will be composed of both men and women, as formerly, but the girls have proved without a doubt that they can, without help from the masculine element, edit a paper of which Otterbein need not be ashamed.

The Tan and Cardinal Staff

Editor-in-Chief	Helen Keller
Assistant Editor.....	Esther Harly
Contributing Editors.....	Helen Bovee
.....	Grace Armentrout
Business Manager.....	Katheryn Warner
Assistant Business Managers.....	Elizabeth McCabe
.....	Virginia Blagg
Circulation Manager.....	Mary Siddall
Assistant Circulation Managers.....	Mary Tinstman
.....	Marvel Sebert
Athletic Editor.....	Cleo Coppock
Local Editor.....	Ruth Hooper
Alumnal Editor.....	Prof. Alma Guitner
Literary Editor.....	Vida Wilhelm



Publication Board

OFFICERS

President	Josephine Foor
Vice-President	Edna Hooper
Secretary	Gladys Lake
Treasurer	B. C. Peters

MEMBERS

Gladys Howard	W. H. Vance
L. E. Pace	C. M. Sweasy



Quiz and Quill Club

"The art of a thing is first its aim; next its manner of accomplishment."

To study the art in modern literature and to develop artistic skill in those who have talent for creative writing—that is the purpose of the Quiz and Quill Club.

Altho only recently organized, and as yet having no firmly established ranking among the College activities, the Quiz and Quill will probably soon make its influence felt in all phases of student work. Since membership in the club is conferred only upon the fulfillment of certain well defined conditions, the club offers an incentive to greater effort in the English department.

The fact that the heads of the two College English departments are permanent members of the Quiz and Quill, with the same standing as the student members, assumes for its future a stability of purpose, and the maintenance of high standards.

G. A., '19.



Public Speaking Council

OFFICERS

President	Virginia Burtner
Secretary	Mary Tinstman
Treasurer	Mary Ballinger

MEMBERS

Violet Patterson	L. E. Pace
Jessie La Rouche	L. K. Replogle
Gladys Howard	O. A. Janes
Mildred Deitsch	G. L. Glauner
Edith Bingham	Professor Fritz



French Plays

Princess
Emeraude

La Petite
Chaperon
Rouge.



Pauvre Sylvie



Women's Athletic Council

OFFICERS

President	Ruth Drury
Vice-President	Edith Bingham
Secretary	Edna Hooper

MEMBERS

Doctor Sherrick	Ruth Hooper
Mary Siddall	Katheryn Warner
Virginia Blagg	



COCHRAN HALL ASSOCIATION



Ladies' Glee Club



NE of the prominent organizations of the School of Music is the Ladies' Glee Club, composed of the best singers in Otterbein. It has been in existence only a few years, but has succeeded in making its influence felt in the musical life of the college.

Last year its work was appreciated by all who were privileged to hear it. This year, through the efforts of the Club, Miss Ethelynde Smith, famous American soprano, was secured to appear in a recital, which was given in the college chapel, January 28, 1919. Miss Smith delighted her audience with her wonderfully trained voice, and with her charming personality. The Glee Club deserves much praise for its success in presenting in Otterbein an artist of such note. It is the intention of the Club to present, from time to time, well known musicians, and thus to stimulate among the students and townspeople an interest in high-class music, and to increase their appreciation of really great artists.

Prof. A. R. Spessard, the director, is a conscientious leader, with the ability to train the Club to a high degree of musical excellence. With such a director, and with members who are sincerely interested in the work, it is reasonable to assume that the Ladies' Glee Club will in the future reach even a greater importance in the college life than it has yet attained.

OFFICERS

President	Audrey Nelson
Secretary-Treasurer	Agnes Wright
Manager	Ethel Eubanks

MEMBERS

Cleo Coppock	Katheryn Warner
Lois Clark	Lorna Clow
Gladys Lake	Helen Vance
Marie Staats	Goldie Windom
Elizabeth Fontanelle	Esther Harley
Beatrice Fisher	Vida Wilhelm
Nelle Mills	Fay Byers
Wray Richardson	Edith Bingham
May Selman	Bertha Hancock

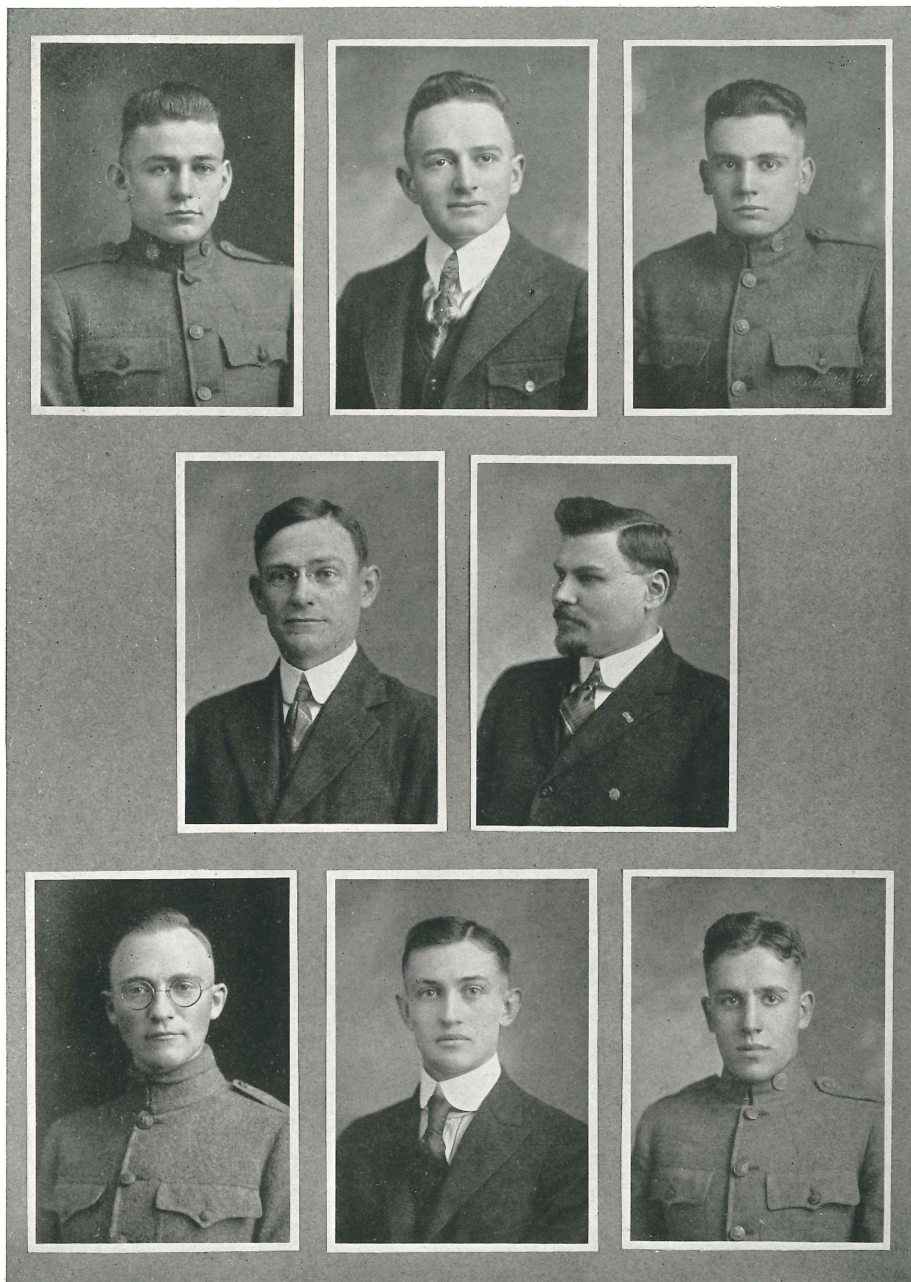


COLLEGE ORCHESTRA



GUITAR AND MANDOLIN CLUB





ATHLETIC BOARD

COACH RAY (Scuffy) WATTS

Although he was in charge of Otterbein athletic teams for only one semester, Coach Watts will always be remembered by all who worked under him. When the basketball team was left without a coach, efforts were made immediately to secure the services of Watts. Being on the ground, he was well acquainted with the situation and soon had things in hand.

Coach Watts was prepared for his duties, as he was one of the best athletes that Otterbein ever turned out. He was a star in football, basketball and baseball and also an excellent tennis player. "Scuffy" was the sort of a coach that players like to fight for, and his ability to get fight out of his teams was largely responsible for his success.



COACH WATTS

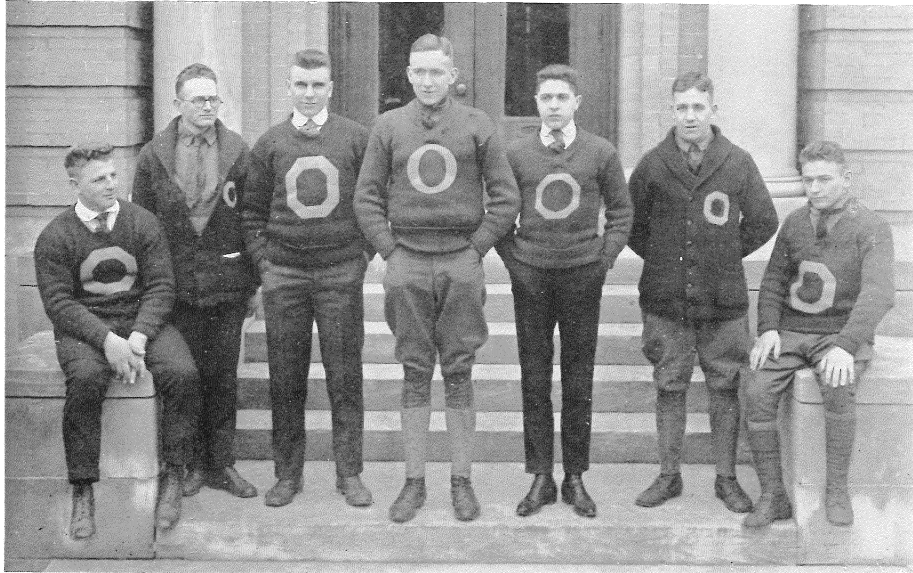


COACH SWAIN

COACH SWAIN

Coach Swain received much of his athletic training at Dickinson, playing on the various teams while there. He is a man, who has had much experience in this line, having coached for 11 years, and officiated since 1911.

His work this year was indeed difficult and he deserves much praise for the development of the football squad from so many raw recruits, for we must remember that only two of the men of last year's Varsity returned this year. He was unbiased and determined in picking men for the respective teams, and the occasional "bawling out," which is characteristic of all good coaches, was never absent. Much credit is due Coach Swain, for making it possible to maintain athletics here during the war.



Varsity "O"

THE Varsity "O" Association was an organization to which only men who had made their letters in some branch of athletics could belong, but during the past year the constitution was changed so as to allow membership men who have earned managerial letters. Each prospective member must go through an initiation which it is said is the most severe given by any organization in school.

The purpose of the Varsity "O" is to promote the interests of athletics in Otterbein, and to develop a higher value for the Varsity letter. The organization has been greatly hindered by the S. A. T. C. regime this year, as the time of the men was entirely taken up by their duties as student soldiers. But since conditions are changed and are back on the old level, the Varsity "O" has again taken its place as one of the leading factors in Otterbein athletics.



THE football season of 1918 opened with a rather doubtful and uncertain outlook. The Army had taken most of the old men and the new men in the S. A. T. C. did not feel inclined to play football very strenuously when so much time was taken up in learning the rudiments of the drill.

There were only two letter men in school, Smith and Meyers. Captain Evans was in the service, so there was no one to lead the few men who did report for practice, until Captain Meyers was elected. For the first few weeks of practice we were without a coach, who is a necessary factor for a successful football season. Manager Fred Gray and Captain Meyers worked hard to keep football going until a coach could be secured. It was only after the Wesleyan game that we were able to secure the services of D. P. Swain of Columbus. Mr. Swain officiated at the Wesleyan game, so he saw the team in action and it did not take him long to straighten out the misfits of the squad for the next game.

It was almost impossible to run football with the S. A. T. C. in school. Football men were allowed their recreation hour for practice, but little could be accomplished in so short a time. The school owes much to Manager Gray for the way he made it possible for a season under existing conditions, in fact it may be said that everyone involved did their best to make the season successful.

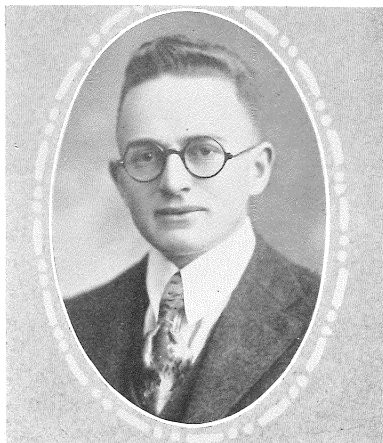
The first game of the year was with Wesleyan. The team went to Wesleyan without a coach, but had good equipment and a little football knowledge from the "old" men. In spite of the score the game was scrappy and exciting. When the final whistle blew we were on the small end of a 62-0 score. However, Coach Swain refereed the game, and thus had a chance to see the team in action and to find out the needs of each player.

The second game of the season was with Denison. The team showed wonderful improvement over the game before. The score was 31-0. The Tan and Cardinal eleven still lacked enough punch and fight to bring home the bacon. Several men had been injured in the Wesleyan game, and were unable to play in most of the remaining games.

The third game was with Heidelberg at Westerville. The Heidelberg team outweighed the home team ten pounds to the man. The home team outplayed their opponents in football, but the breaks happened to come in favor of Heidelberg. Camp played best for Otterbein and made the first touchdown of the season. The score was 13-6.

The fourth game was with Muskingum on the Westerville grounds. Lack of team work was responsible for Otterbein's defeat. The score was 6-0. Smith, our quarterback, could not be stopped when it came to his quarterback "sneaks."

The last game of the season was with our old rivals, Kenyon. We don't know just how to account for the defeat, but we will say it was our off day. In a rather loosely played game, Otterbein came out at the wrong end of a 39-0 score.



FRED D. GRAY
MANAGER

Too much honor cannot be given to the successful manager of an athletic team. Gray did fine work during the 1918 season, but he confronted difficulties that few managers have to contend with. War conditions caused the schedule to be only a temporary one, then too, the influenza "ban" caused several games to be cancelled. Only five games were played, but two of these were home games, much to the joy of the home supporters. No long trips were taken. This, however, was not the fault of the manager, but of existing conditions. Gray is to be commended for his persistent work, because we realize that a 1918 football team would have been practically impossible, had it not been for his work.

FOOTBALL SCHEDULE FOR 1919

September 27—Ohio Wesleyan.
October 4—Detroit University.
October 11—Dennison.
October 18—Open.*
October 25—Heidelberg.
November 1—Open.*
November 8—Wittenberg.*
November 15—Muskingum.
November 22—Marrietta.

*Home games.

OTTERBEIN

FOOTBALL

TEAM

- 19 - 18 -



F.D. GRAY-MANAGER



H.P. SWAIN-COACH



R.M. OLIVER-R.G.



J.S. MACDONALD-F.B.



H.H. MEYERS R.E. CAPTAIN



R.W. CAMP-R.H.



C.L. SMITH-Q.



L.S. SOUTHWICK-L.G.



M.L. HOWE-R.T.



J.G. HOWARD-C.



C.L. FOX-L.T.



F.W. MELKUS-L.E.



W.J. BURGET-L.H.



R.K. POWELL-SUB



E. ALBRIGHT-SUB



P.V. SPROUT-SUB

BAKER ART GALLERY

Foot-ball 1918



"PLAY 15"



Team - Rah -



Otterbein vs Muskingum.



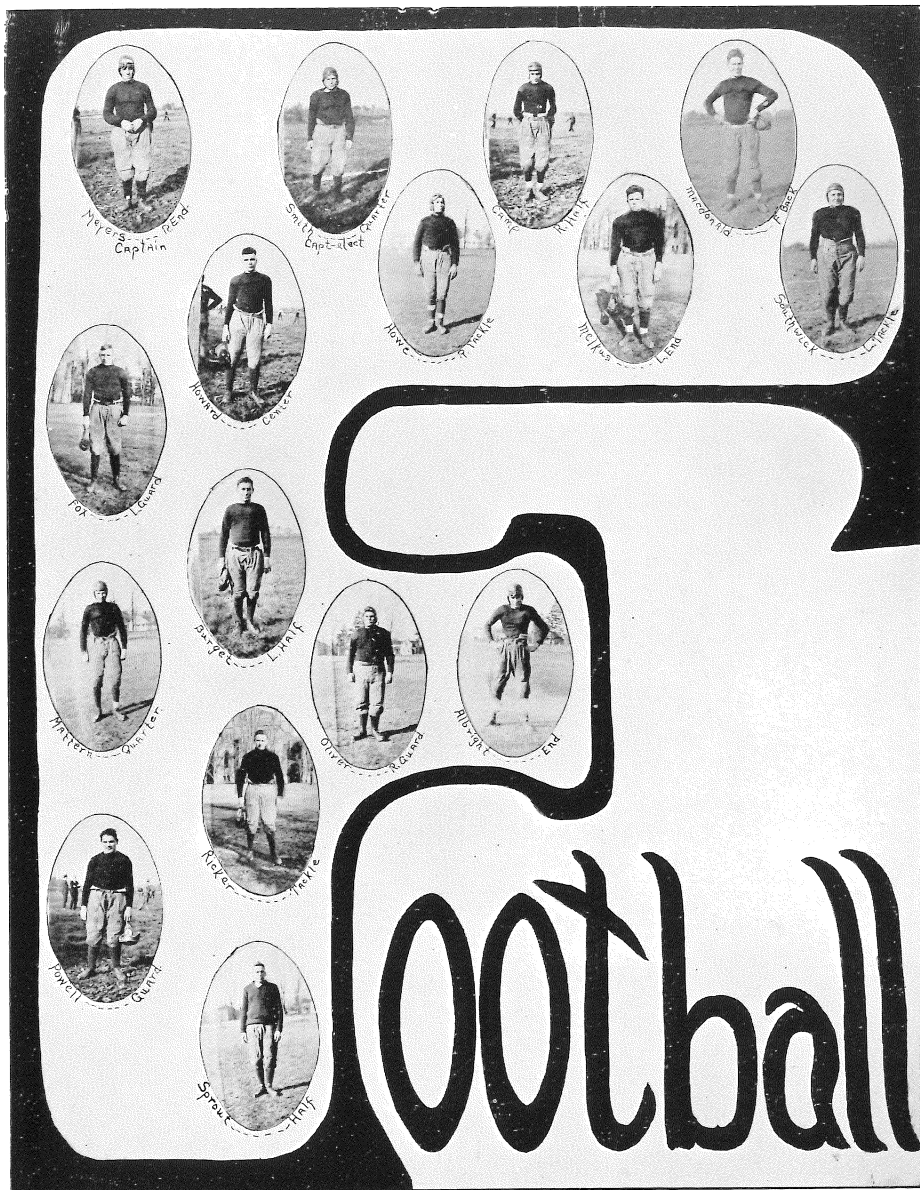
Captain-



Little Action



"Lets go"

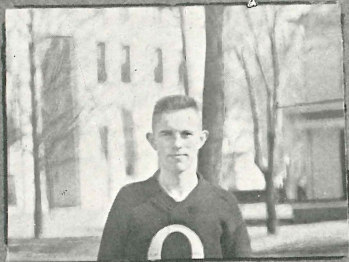


1918 Captains



"Herb" Meyers-
Foot-Ball

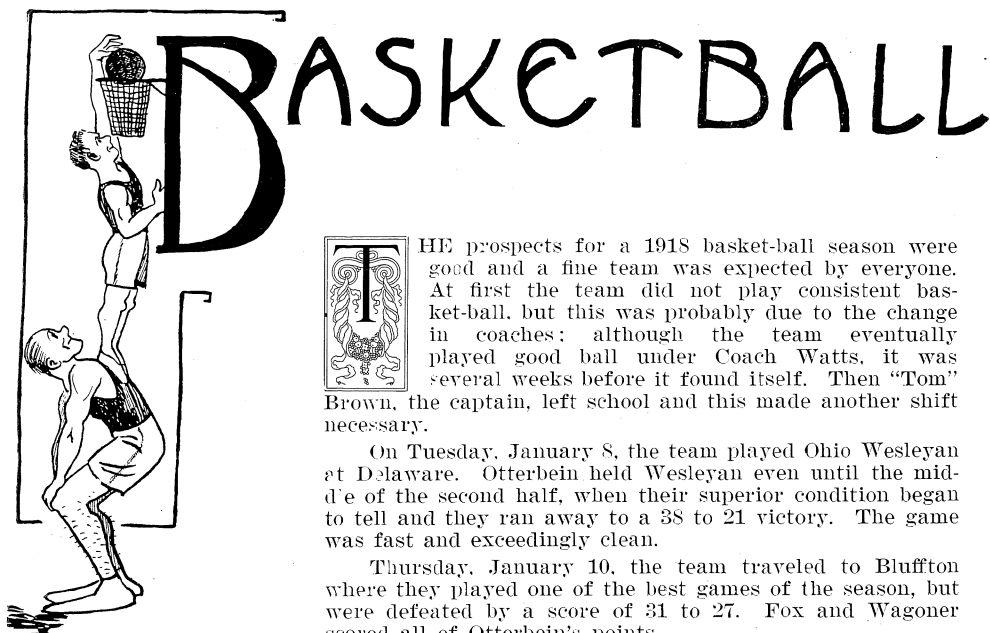
-Charles Fox-
Basket-Ball



-Paul Miller-
Track

-Fred Gray-
-Tennis-





THE prospects for a 1918 basket-ball season were good and a fine team was expected by everyone. At first the team did not play consistent basket-ball, but this was probably due to the change in coaches: although the team eventually played good ball under Coach Watts, it was several weeks before it found itself. Then "Tom"

Brown, the captain, left school and this made another shift necessary.

On Tuesday, January 8, the team played Ohio Wesleyan at Delaware. Otterbein held Wesleyan even until the middle of the second half, when their superior condition began to tell and they ran away to a 38 to 21 victory. The game was fast and exceedingly clean.

Thursday, January 10, the team traveled to Bluffton where they played one of the best games of the season, but were defeated by a score of 31 to 27. Fox and Wagoner scored all of Otterbein's points.

The next evening the team played Pandora where, handicapped by a small floor and low ceiling, the best they could do was an even score of 27 to 27.

The fourth game of the season was played at New Concord against Muskingum on Saturday, January 19. As several of the men were off the team and the playing was on a very small floor, the Varsity came out on the short end of a 57 to 25 score. Smith and Funk, playing in their first game, did good work.

Muskingum came to Westerville for the next home game of the season, on Wednesday, January 23. Here the home team won a very interesting game by the score of 35 to 26.

On Saturday, January 26, the team won its second victory of the season by defeating the Cederville College Quintet at Westerville. The final score read: Otterbein 35, Cederville, 20. The Varsity started with a rush and scored five times before Cederville woke up.

The second home game was played with Heidelberg as our opponent. The Tiffin Five was just a little too fast and Otterbein lost a good game by the score of 40 to 32. The game was full of thrills and the crowd cheered continually the playing of both teams.

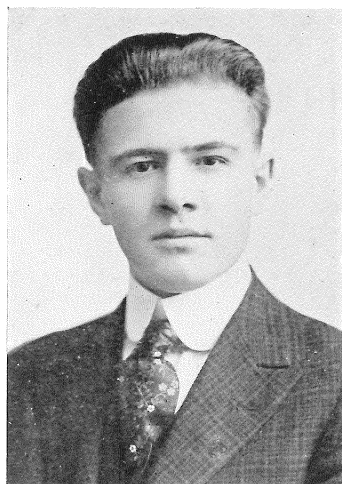
Friday night, February 8, Cedarville came to Westerville for a return game. For a few minutes the score was even, but Otterbein soon located the basket and ran away with a 52 to 30. Fox and Miller played best for Otterbein.

The next evening the team traveled to Columbus and played the fast Capital Five. Otterbein held Capital's veteran team down in the first half, but the last part of the second half, Capital's team work told and she earned a hard victory of 42 to 24. "Wib" Wagoner scored six goals for Otterbein.

Saturday, February 16, Otterbein won from her old rival Antioch on the home floor by a 41 to 20 victory. The game was hard fought, but once in the lead Otterbein was never headed.

The season ended on February 21, with a bad defeat by Capital on our floor. The score at the end of the game was 52 to 17 in favor of Capital.

The Sophomores won the inter-class series by defeating the Freshmen in the final game. The Sophs had three Varsity men on their team and completely outclassed the first year men. The final score was 58 to 15.



ELMER SHUTZ

The 1918 Basketball season from the managerial standpoint, was a great success. Good connections were made on all the trips, and the team reported that they received splendid treatment in all the games away from home. The team was snowbound on the Bluffton-Pandora trip, but being held up among friends and in the manager's hometown, the accident afforded pleasure rather than hardships. Shutz did fine work and the success of the team can be attributed to his management.

INDIVIDUAL RECORD

Players	Field Goals	Fouls	Total	Halves
Fox	71	34	176	20
Wagoner	29	4	62	18
Meyers	22	00	44	15
Miller	20	1	41	20
Brown	4	00	8	12
Funk	2	00	4	5
Barnhart	1	00	2	6
	<hr/>	<hr/>	<hr/>	<hr/>
	149	39	337	





HE outlook for the track season of 1918 was not encouraging. Having no indoor track the team was greatly handicapped by the late spring, and was able to get only a few days of practice on the track before the first meet. Otterbein had no track team in 1917 and nothing was known about the material in school except the three men who were left from the 1916 team, Captain Barnhart, Higlemire and Love.

The first meet was with Denison at Granville on Saturday, April 20. It was a cold, windy day, and our men were greatly handicapped as they were in very poor condition because of lack of practice. Denison won by a large score, but in no event did she have an easy time. All the events were closely contested and only the superior condition of the Denison team was responsible for the uneven score.

The next meet of the season was with Heidelberg on May 18. After a close, hard fight the meet ended in a tie score, each team having $54\frac{1}{2}$ points to their credit. Each event was a fight in itself, and the crowd of spectators saw one of the most hotly contested meets ever held on the old Athletic Field. What looked like a win for Heidelberg was turned into a tie when Otterbein won the relay. Several of Otterbein's point winners were unable to take part in this meet, and their absence kept our team from winning the meet.

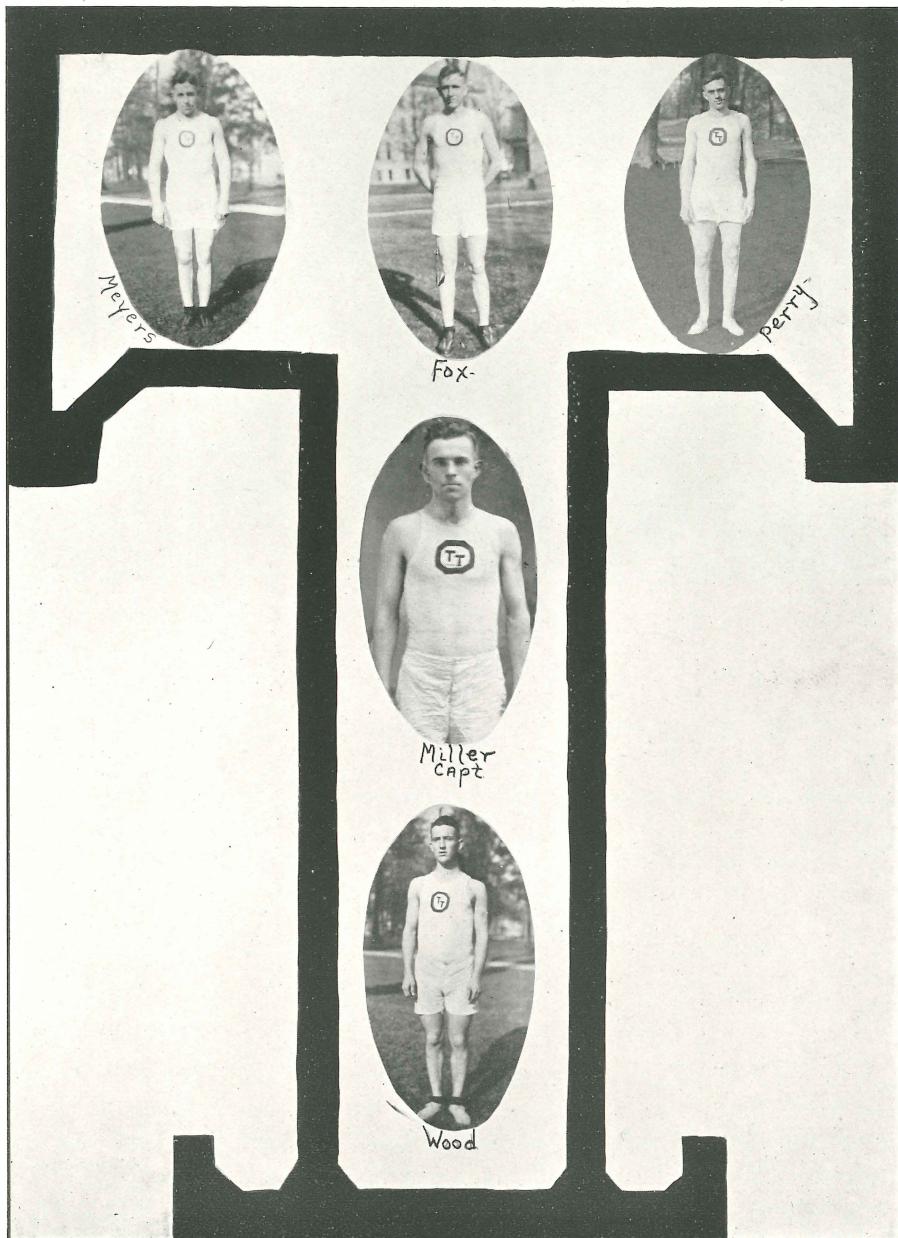
The last meet of the season was with St. Marys at Dayton on May 25, which resulted in a 65 to 47 victory for our opponents. The score was always close and the meet was not won until the last few events had been run off. "Barny" was in real form for the first time during the season, and he won three first places in easy fashion. Higlemire in the weight events, Miller in the mile, and Perry in the 440-yard dash, did fine work.

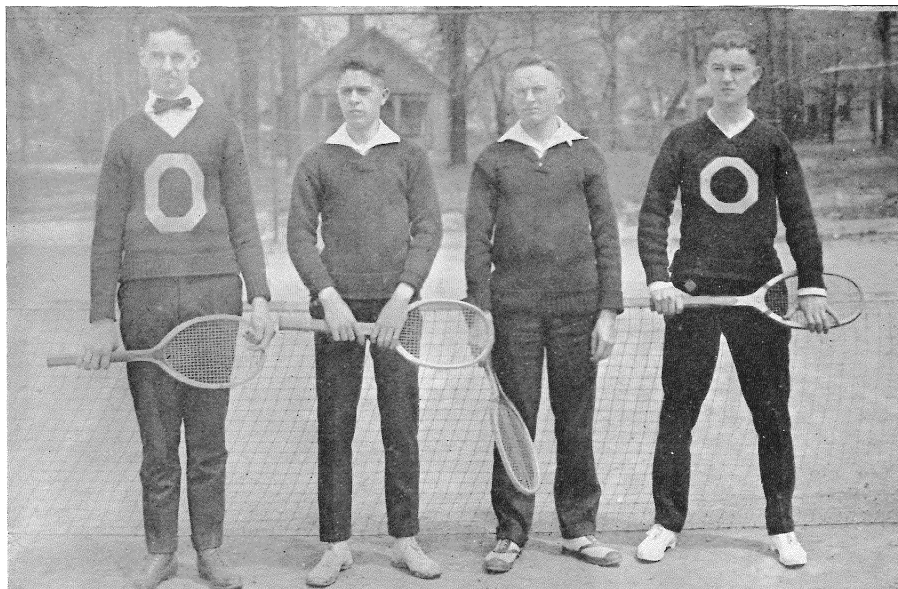
A novel contest was inaugurated by Coach Watts for the track team. Every man on the squad was to enter each event in a meet which was run off at the rate of one event a day. This contest not only gave the Coach a chance to look the men over, but it added interest to their training, as medals were given to the three men having the highest score. Barnhard was first, Fox second, and Higlemire third.

The interclass meet was held on May 4. It was a fine warm day and all the classes were represented. The meet soon developed into a fight between the classes of 1919 and 1920, but the Sophomores won because of their superiority in the track events. Hayes, for the Sophomores, and Barnhart, for the Juniors, were the individual stars.

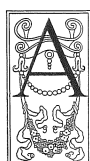
Final scores:

Sophomores	65
Juniors	37
Seniors	10
Freshmen	00





Tennis



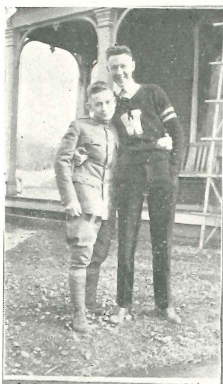
AT the beginning of the 1918 Tennis season, Otterbein had the material for a fine team. The 1917 team was intact. Captain Ressler, Bancroft, Gray and Brown were all in school and everything pointed to a winning team. Coach Watts had the men in fine condition just before the first match, but weather conditions broke up practice and the team did not get back into shape until late in the season.

The matches won and lost do not tell the real truth about the season. All the games were close and hotly contested. Our opponents were the best in the state and Ressler, Bancroft and Gray always played good tennis, but never seemed to get the breaks. The team's two victories were over our old rivals, Wesleyan and Dennison. These were both on the home courts and were witnessed by large and interested crowds.

The 1919 season promises to be much better than the 1918 season. Bancroft and Gray are both in school and there are several first year men who it is said are real net artists. The team will not be handicapped for a place to practice as the new courts on the old athletic field will be in much better condition than last year. Gray is captain of the 1919 team.



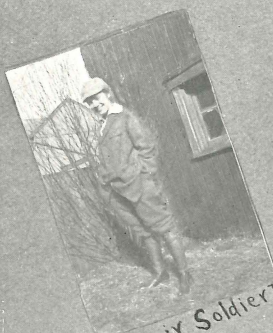
Celebrities- of 1918 - 1919



"Long Boy!"



"Wee, Wee, Marie"



"Au Revoir, Soldier Boy"



"Little Coal-black Roses"



"Oh Johnnie, How You Can Love"

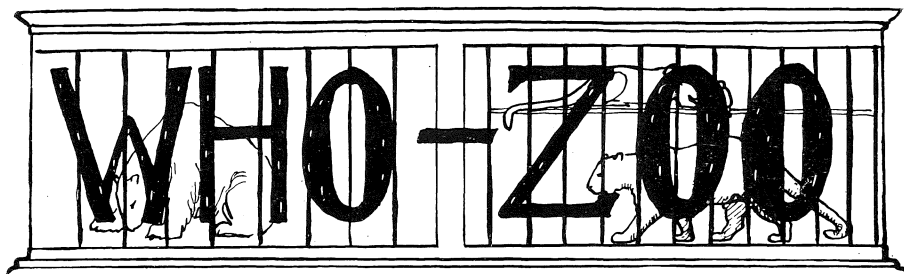
"Watch on the Rhine"



"K-k-Kat y"

"Those Eyes"





Halderman, Duke—Local representative from Hart, Shaffner and Marx.

Fisher, Beatrice—Model for Vogue styles. Missionary to heathen of India. Author of "The Right Approach to the Hindoo."

Gray, Fred Davis—Financier. Degree of B.B.C. (Bachelor by Choice 1919.)

Walters, Lillie—Social worker among young boys of Ottenbein and West Virginia.

Busch, Zachariah—Art critic; hypnotist; originator of conservative basketball suit.

Warner, Katheryn—Senior partner in firm of Warner and Blagg, Distributors of choice Dates, imported variety.

Johnson, Ray—Freshmen adviser of constituency on important local matters.

Mullen, Genieve—Ad-Vance course in Campustry, 1919. Honor Student.

Moore, Warren J. Corney—Promoter of "All-Bluff Systems," Otterbein, 1916-? Author of popular song, "What's the use of Hurrying?"

Campbell, Helen—Noted Orator in Diplomatic Service.

Freeman, Satan Harold—First prize in Stout Man's Contest, State Fair, 1917.

White, Laura—Graduate from Ohio State in 1919; sister of Pearl White.

Wood, Lyman Joy—Instructor of aesthetic dancing and hygiene, Otterbein, '19.

Moore, Rats Fisher—Promulgator of "The American Society for Self-Exaltation," and chief executive for Otterbein College.



Socially Speaking

THOSE WHO MARRY

REDEEMED

"Jud" Siddall	"Pete" Naber
Chalmer Potts	U. P. Havermail
Carl Sweazy	

THOSE WHO WAIT

"WAITING FOR THE TOUCH OF HER HAND ON MINE"

Russell Palmer	"Bill" Evans	Ray Harmelink
Lyle Michael	"Herb" Meyers	Albert Sanders

LADIES' AID SOCIETY

UNDER CONVICTION

MEMBERS

Zachariah Busch
 Leslie Dano
 Chas. Lamont Fox
 Estel Albright
 Kenneth Scott
 Gordon Howard

CO-LABORERS

Wilma Adams
 "Benny" Heeter
 Lenore Raydt
 "Betty" McCabe
 Edith Cave
 Gladys Yokum

SLIGHTLY TOUCHED

WOULD-BE MEMBERS

"Bob" West
 "Denny" Brane
 "Satan" Freeman
 "Rats" Moore
 Curtis Evans
 Harold Davison

Lillie Waters
 Harriet Hayes
 Katheryn Warner
 Leora Gouchenour
 Mary Ober
 Marie Staats

CO-LABORERS

Bertha Hancock
 Helen Bovee
 Florence Dixon
 Fay Morrison
 Loraine Rhinehart
 Velma Swinger

EX-ACTIVE MEMBERS

(With Interests at Other Places)

THE GIRLS

Vida Wilhelm	Canton, Ohio
Florence Loar	Dayton, Ohio
Helen Bovee	France
Grace Armentrout	Army of Occupation
Virginia Burtner	Baltimore, Md.
Ruth Drury	Columbus, Ohio
Virginia Blagg	Cincinnati, Ohio
Audrey Nelson	France

THE PLACES

CONFIRMED BACHELORS

BEYOND REDEMPTION

L. Joy Wood
 Corny Moore
 L. K. Replogle

LOST

Duke Halderman
 H. Hanawalt
 E. N. Miller



Helen Bouee
Wittiest



Bernice Heeter
Prettiest



Marie Staats
Jolliest

Grace Armentrout
Best Student



Virginia Blagg
Most Independent

Genevieve Mullin
Most Popular

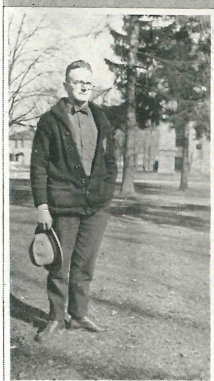




Judson C. Siddall
Best Politician



Chas. L. Fox
Biggest Bluffer



Fred D. Gray
Greatest Grafter



Herman E. Michael
Busiest



William H. Vance
Loudest Talker



Howard F. Moore
Ficklest Flirt

Cochran



La table Française



Ready for Sunday dinner

Hall Life



After a hike.



We're patriotic!



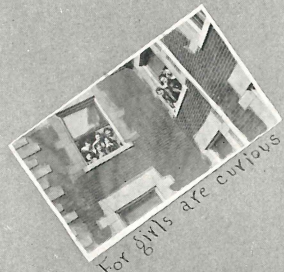
Saturday Morning



Investigating



Greetings!



For girls are curious



The domain itself



2 favorite stopping place



A cozy corner



Hello!



Shrine of concentration

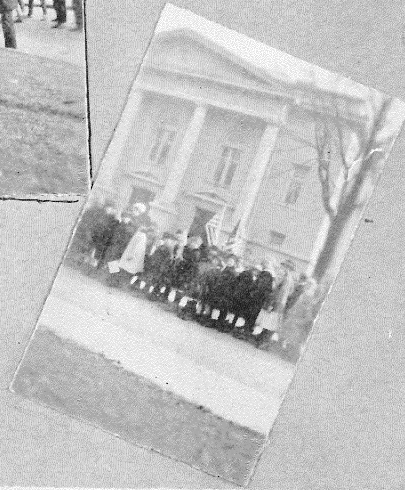


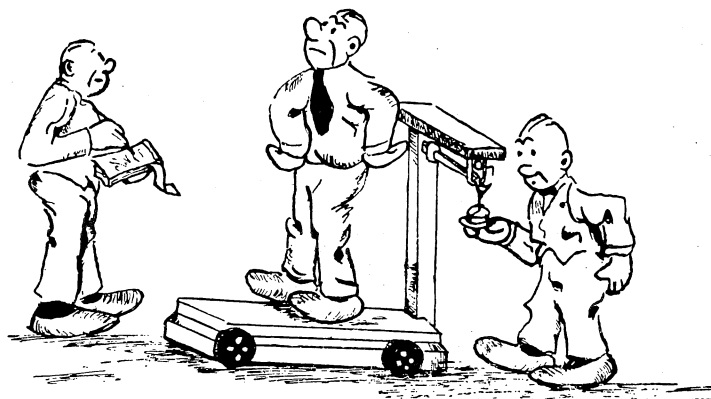
When my ship comes in.



Signing
of the
Armistice

Nov 11, 1918





STATISTICS

College girls were created before mirrors and have been there ever since.

Early in the year of 1919 occurred The Great Confiscation of Shoes and other wearing apparel in Cochran Hall.

The new science hall in February, 1919, was yet in the formation stage—in someone's mind.

Summing up the total number of hours lost through vacations, exams., special days and hours during which no classes are held, we lose five weeks out of the thirty-six that we attend college.

Smoking has been prohibited in Ottenbein since the year 1847.

The new flag staff was erected on the campus in the year of our Lord one thousand, nine hundred and seventeen.

The Alum Creek Bridge is occupied by the students 50% of the time including both daylight and darkness.

Snipe hunting has been a favorite autumn pastime in Otterbein from time immemorial.

Otterbein had the first college Y. M. and Y. W. in Ohio, and one of the first in the United States.

The Cardinal V-neck is the regulation male attire in Otterbein.

The total enrollment in Ottenbein in 1847 was eighty-one.

The students use enough ink in one year to fill a bath tub 1.7 times.

Otterbein sacrificed greatly during the Great World War (1914-18), even to sustaining an S. A. T. C. unit.

The total enrollment of the Junior class in February, 1919, was seventeen.

Exactly three skiffs of snow fell in the winter of '18 and '19.

Otterbein unraveled nine months of her history from September, 1918, until June, 1919.



JOKES



"Rats" Moore (to Cleo Coppock at the door of Cochran Hall): "J'aime vous."

Cleo: "No, you don't mean that I know."

"Rats: "I mean I had an awful good time to-night."

Voice in the Hall: "Virginia Blagg, you're wanted at the 'phone."

Virginia: "What 'phone?"

Helen Bovee: "Megaphone."

Herb Meyers: "Gray, did you play 'Button Button' when you were a kid?"

Fred Gray: "No, we always played 'Pstoffus Pstoffus' (Post-office)."

Roberts: "When you write your name in Greek, you know it always changes."

Lilly Waters: "I'm going to Greece! I've been trying to change mine for six years."

Helen Keller is one of Ottenbein's philanthropists, who has gone so far as to take a Ward.

Dr. Sherrick (in Shakespeare): "Now we will all go to the killing scene."

A conservatory restriction: No young woman may accompany a young man on the piano without a chaperone.

Peters (conducting an election for Student Welfare Committee): "Now, everybody quick—Who will you have for your Junior girl?"

Someone in the Hall: "Gladys Howard—telephone call."

Gladys Yokum: "Yes, yes, I'm coming." (Ask Gordon H. for particulars.)

Mae Sellman (at lecture, sitting between Fishbaugh and Miller): "A rose between two thorns."

Fishbaugh: "No, a tongue sandwich."

If a pillow had a case, would the sheet comforter?

He said: "I've something for your neck,"
And she filled with hope,
But oh, alas! he only brought
To her—a bar of soap.

For boys *only* (read backwards): Didn't you if girl a be wouldn't you, it read
would you knew we.

Professor Shear: "Explain the digestive system of the earthworm."
Mr. McClay: "Er-wel-l—it's just the same as it was last week, Professor."

Wanted—A self-starter for Sunday night callers at Cochran Hall.—Dean
McFadden.

Voice in the telephone: "Are you fifty-five?"
Miss Sherrick—"How rude to ask a lady her age."

Miller (in Chemistry): "How much does a gram of hydrogen weigh?"

Miss Guitner (in English class): "And when Ulysses returned, he found one
hundred men, in the ladies' palace, pressing their suit."

THE WHY

Frequent trips to Columbus,
Late hours in the Dorm,
Unnecessary visits to Willies,
No work in on time,
Kind advice unheeded.
Over work of ponies,
Underwork of brains,
Too numerous points and pushes.

Virginia B.: "How do you like teaching?"

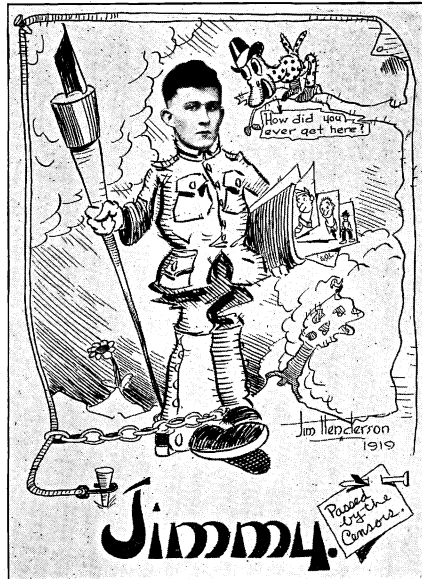
Grace A.: "Oh it's just great! You know the class is all boys and they
look at me with such wonderful expression in their eyes."

Librarian: "Are you especially fond of current magazines?"

Bob Wright: "Yes indeed, particularly McClures."

Mrs. Noble: "Name three things that contain starch in quantity."

Nellie Mae Moon: "Two cuffs and a collar."



JAMES RUTLEDGE HENDERSON, JR.

James Henderson, Jr., hails from Charlotte, North Carolina. He came to Otterbein in 1916 and we still claim him as a member of our class, although he has been in the service for nine months.

"Jimmy" or "Hen," as his friends call him, is a genius with his pen. He is probably the youngest famous cartoonist in the country and his future success is assured. Since he was sixteen years old, his drawings have been published in the Charlotte High School Annual, Charlotte "News" and the Charlotte "Observer."

His works may be seen in all the magazines and papers of the American Issue Publishing Company at Westerville, the "Sample Case" of Columbus and the "Judge." Not only are his works known in certain communities, but all over the United States you may find his name tacked to cartoons in "Everywoman's Magazine," "The Virginian," "The National Daily," "Spartenburg Herald," "New Republic," and "The National Issue." For three months, he served as an Army Recruiting Cartoonist at Richmond, Virginia. In the Cartoons Magazine you will find a picture of "Jimmy" himself with "write-ups." In this magazine he is called the "World's greatest Army Recruiting Cartoonist."

We are indebted to "Jimmy" for all the cartoons in this publication, and appreciate his work as well as take our hats off to him for his talent. His pictures are full of "Hen's" personality and we can trace his individuality in them without his signature to mark them.

Here's to our jolly southern lad. We are proud of him and some day soon we expect to find him in "Who's Who" of the picture world.

Wonderful Otterbein



Westerville is the largest city of its size in central Ohio; of which Columbus and Toledo are suburbs. Legislation is being made to move the state capitol to Westerville because of its superior advantages, the only drawback is that the dray has not been made.

The metropolis may be reached by a train running once daily, or by ultra-modern interurbans, which make hourly connections between Westerville and its suburbs. We take the car at Columbus and when we step off at Westerville, we can see the city as we are in the midst of it.

Westerville has a large business district, hundreds if not dozens of houses, a hotel, and one policeman. The post-office is an imposing structure where guides keep the crowds from getting lost. The population consists of men, women, children, college students and professors.

There are several roads leading from the place and it gives one a comfortable feeling to know that we can get out of the said city if we want to.

The city is a stopping place for tourists, who desire to see the spacious college buildings. They are noted as follows: the administration building for its bell which wakes you up in the morning and after each class; the science building for its beauty of structure; the library for its noise; Lambert Hall, for its discords; and Cochran Hall, for its front verandah and its inhabitants.



Westerville is famous for its manufactures, especially of bluffs, excuses and chocolates; it is the distributing center for careers, flunkers and Seniors.

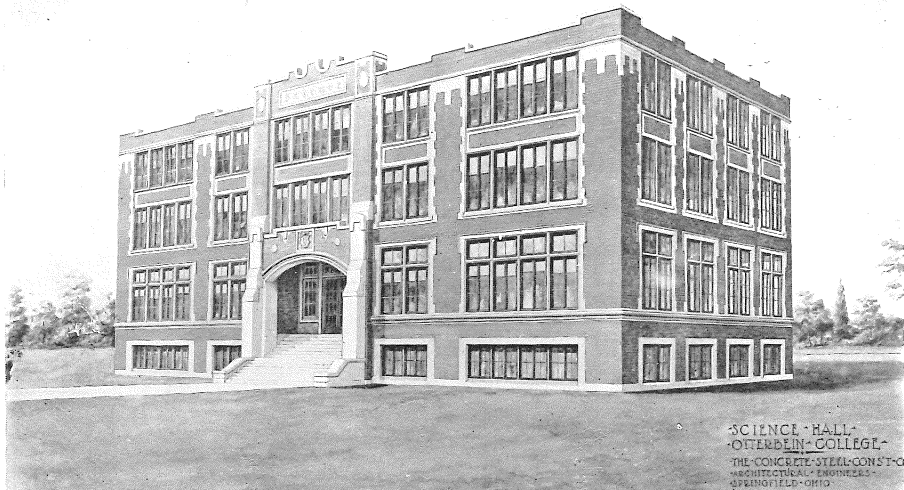
Alum Creek, on the outskirts of said city, is valuable for sawmills, skating and canoeing. Its banks may also be used for walks, preferably in the Spring. Groups of masculines or groups of feminines may partake of said walks, but the result is more satisfactory if the groups meet.

The bridge is useful, especially on Sunday nights. For example, two of the above mentioned students go walking. He says, "Let's take this road." She says, "Can't do it—not allowed out of the city limits. Let's go to the bridge!" and they go. We may calculate, but not investigate the use of the bridge.

The scenery around Westerville is beautiful, as it was made for hikes and pushes. Students spend their spare time, which is most of their time, with it.

Therefore, my friends, I wish to imprint upon you the importance of Westerville, for the afore shown reasons: first, that it is a busy and populous burg; second, that it is a metropolis; and thirdly and foremostly, that you can get out of it if you want to.





NEW SCIENCE HALL
 One of the nine buildings on Campus
(Now in Course of Construction)

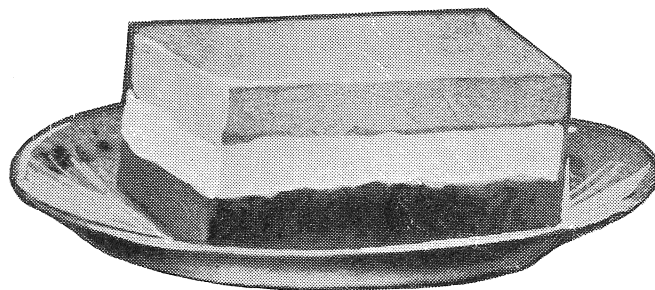
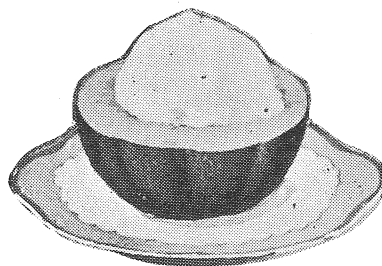
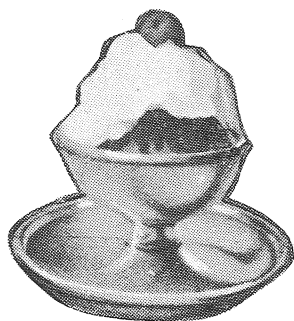
Otterbein College
 FOUNDED 1847

Standard College
Member of Leading College Associations
Experienced and well trained faculty
Healthy Environment
Fully Equipped

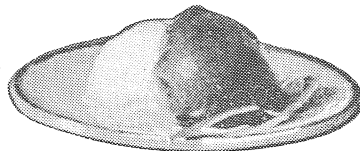
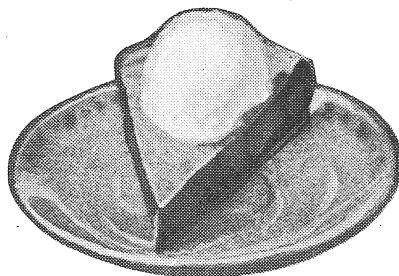
The above is a cut of the new science hall in course of construction. It will contain three floors and full basement, nine well equipped laboratories, three recitation halls with offices and private laboratories for instructors. There will be over 27,000 square feet of floor space, about five times the present space used for science.

WRITE FOR CATALOG

W. G. CLIPPINGER, President
WESTERVILLE, OHIO



WILLIAMS
ICE CREAM
The Cream of Perfection




H. Wolf
SANITARY MEAT MARKET
For Quality and Service

EAST COLLEGE AVENUE

Phones: Bell 4620 Citizen 96

1868 1918



**The
Buckeye Printing
Company**
Westerville, Ohio

**Bastian Bros.
Company**

MAKERS OF

Class Pins
Class Rings
Athletic Medals

Engraved Commencement
Invitations
and Announcements

CALLING CARDS

853 BASTIAN BUILDING
Rochester, New York

GOODMAN BROTHERS
JEWELERS

No 98 NORTH HIGH ST.

Bovee's Old Reliable Furnaces

PIPELESS or with REGULAR PIPING.

SOLD at MANUFACTURER'S PRICES.

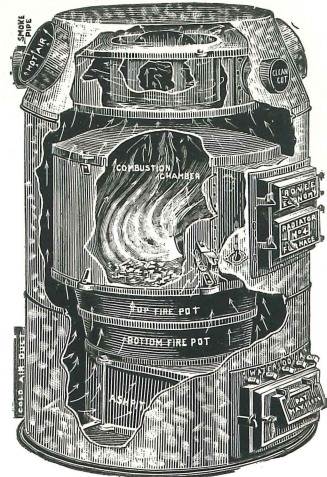
Many Thousands in use.

TWENTY FOUR YEARS on the market.

Nothing better used and we have never seen any as good.

They actually require LESS FUEL, LAST LONGER and are EASIER TO OPERATE than other Furnaces.

Write us for FREE CATALOG and our SPECIAL PRICES.



BOVEE FURNACE WORKS
WATERLOO, IOWA

CALL PERCY TAYLOR

—if you want the finest kind of taxi service, auto accessories, repair work or storage.

Get our prices for trips to any point. We are always ready to go and at a reasonable rate. Our prices are as low to the Students as they are to the Athletic teams of Otterbein.

The WESTERVILLE GARAGE

Dodge Bros. Motor Cars

31 EAST MAIN STREET

Phones: Bell 15-W Citizen 271

Baker Art Gallery

—again appreciates the liberal patronage
of Otterbein Students and organiza-
tions and hopes the future may have
the same measure of success in store
for each of you as you have made
it possible for us.

Baker Art Gallery
COLUMBUS, O.

The Old Reliable
University Book Store

WELCOMES ALL OTTERBEIN STUDENTS,
Old and New.

Books, Fine Stationery,
Current Literature, Bibles, Fountain
Pens, Typewriters, Memo books, Society Pins
and College Jewelry.

STEINWAY

The purchase of a Steinway for the home means the selection of the ideal piano, tone and workmanship being of first importance.

It is the price of the Steinway which makes possible its supreme musical qualities, but you will find that the Steinway costs only a trifle more than many so-called "good" pianos.

Year after year, through generation after generation, the Steinway reigns unchallenged as the choice of foremost musical authorities.

For more than three score years the STEINWAY piano has been recognized in every corner of the globe as the world's incomparable musical instrument—an instrument whose fame has been attained by reason of its perfection in every detail.

Grands and Uprights. Prices and terms very moderate. Pianos taken in exchange.

246 South High St.

STEINWAY & SONS

Get our special price on Your Complete Annual

Hammersmith- Kortmeyer Co.



Engravers - Printers

Largest Publishers of High Quality
Complete College Annuals
In the United States

Milwaukee, - Wisconsin

ATTENTION!

THE BEST STORE for your wants in medicines, drugs, toilet articles, soaps, creams, cameras, films, printing paper, fine stationery, perfumes, delicious pure candies, etc. is at

DR. KEEFER'S

The NYAL QUALITY STORE

Otterbein College Students
Are Our Customers.

We take the greatest pleasure in extending to them every courtesy and the greatest amount of service possible

*Good Shoes are the first requisites
to good appearance.*

Our showing of correct, comfortable and quality footwear for Men and Women begins in price
at **\$4.00**

MEN'S FURNISHINGS

OUR ASSORTMENTS ARE LARGE OUR
PRICES ATTRACTIVE AND OUR QUALITY
THE HIGHEST.

E. J. NORRIS
WESTERVILLE, OHIO

The D. L. AULD COMPANY

Class Rings Class Pins

ENGRAVED
COMMENCEMENT
INVITATIONS,
CALLING CARDS
AND
ANNOUNCEMENTS

SATISFACTION
Absolutley Gauranteed

195-197 East Long Street
COLUMBUS, OHIO

HURRAH!
Otterbein

***Rexall* Store**

"Dad Hoffman"

WILSON

The
GROCER

1 SOUTH STATE STREET

A graduating present must be exquisite,
exclusive, appropriate.

We have lovely gifts in silver, Carara marble,
cut glass, pottery, basketry, etchings, and other
out of the ordinary and lasting value presents.

Spread sets, cut flowers, candies, favors, and a full line of
Dennison paper goods in stock.

“Come in and browse around”
among the lovely things.

Glen-Lee Shop

V. W. LEE

MARY E. LEE

The Women's Bakery

Bakers of

MILK BREAD

MALTO BREAD

and

Fine Cakes and Rolls

FOR SALE AT—

Wilson's Grocery

Moses and Stock

Keller and McElwee

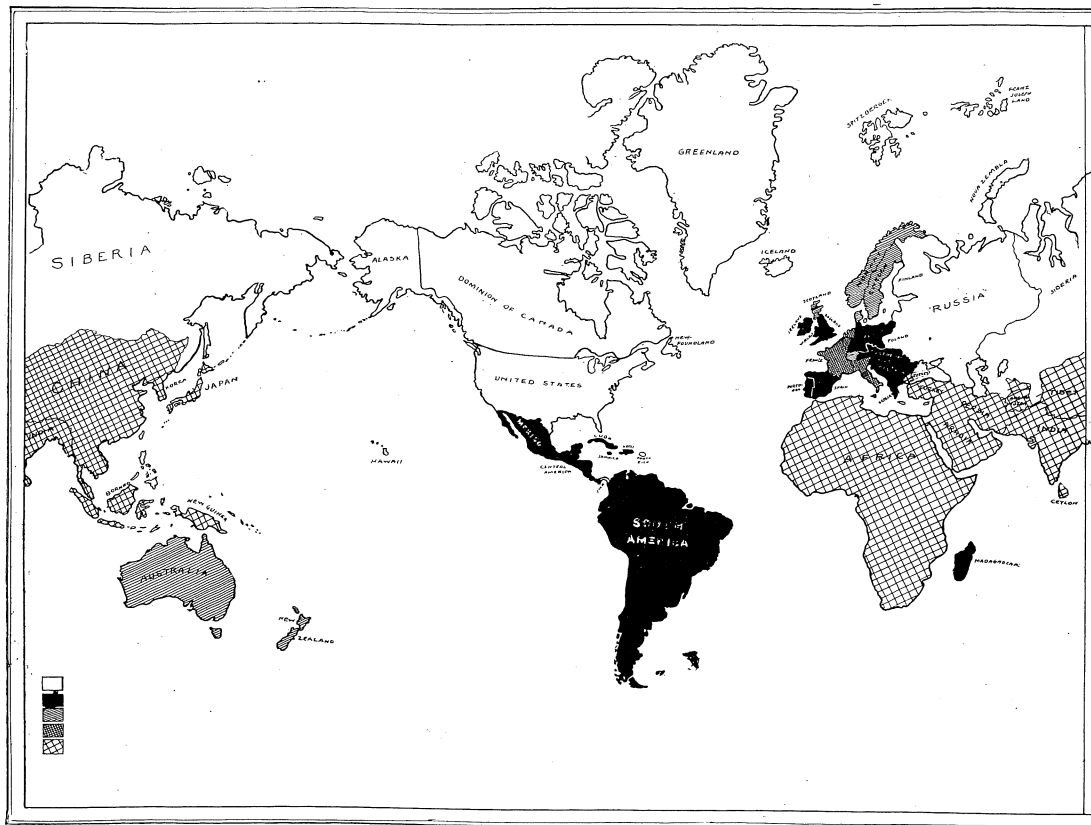
C. W. Reed

Graul's Grocery

Daily Auto Delivery to
WESTERVILLE

Insist on these bakery products!

OUR WORLDWIDE PROGRAM



The Anti-Saloon League of America through
The American Issue Publishing Company

INVITES

To co-operation in the program for

WORLDWIDE PROHIBITION

"The Field is the World"

The New Program—LAW ENFORCEMENT and
ANTI-ALCOHOL EDUCATION for a DRY AMER-
ICA, and a SALOONLESS and SOBER WORLD.

Send for Pamphlet—WORLD PROHIBITION PROGRAM

Address AMERICAN ISSUE PUBLISHING CO.

Dept. of Literature

WESTERVILLE, OHIO, U. S. A.

Telling's



Sold at the
**New Model Restaurant
Confectionery**

SODA FOUNTAIN, BEST SANDWICHES,
HOME-MADE PIES, CIGARS, CIGAR-
ETTES, and TOBACCO.

Regular Lunches and Dinner

ED. HART, Prop.

50 NORTH STATE STREET

Bell 181-W

Special Orders Anytime

Dr. G. W. Henderson
M. D.

OFFICE:
State and Plum Streets

Dr. W. M. Gantz

Dentist

15 West College Ave.

Cellar Lumber Co.

THE OLD RELIABLE
SCOFIELD STORE

carries at all times a fine line of
Dry Goods, Notions and Ready-
to-wear Garments.

In the Men's Furnishings there
are Classy, Up-to-Date Shirts,
Neckties and the Guaranteed Iron
Clad Hosiery.

Quality Counts

An Appreciation

Of the business institutions who showed their feeling toward the students and advertised. Patronize them.

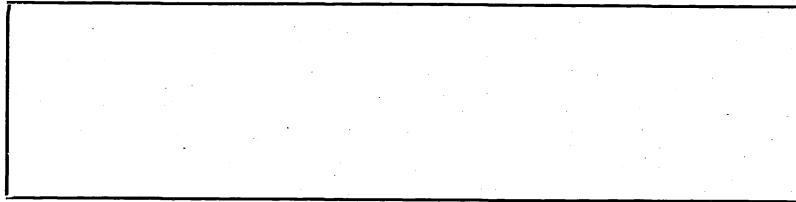
Of the subscribers who loyally forwarded their money and moral support.

And of those other friends who have gladly loaned a helping hand.

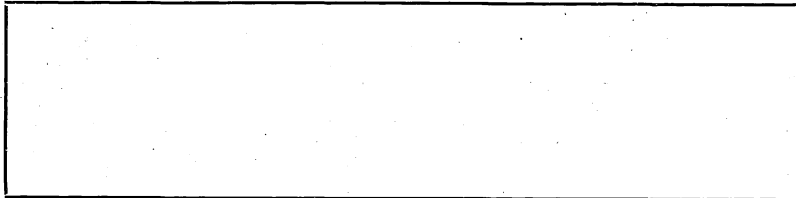
Thanks to All

THE STAFF

If you can draw better cartoons than are in this book. Draw them here.



If you can write better than you find in this book. Do it here.



If you must Knock come here—

THE SIBYL OFFICE
Conservatory of Music

