

PUBLISHED BY OTTERBEIN UNIVERSITY SINCE 1926

# Otterbein Towers

FALL 2014



## WHERE WE **STAND** MATTERS

The Campaign for Otterbein's Future:  
Investing in Students First



Kathy Krendl

## Why Otterbein Matters: Standing Strong into the 21st Century

This is a historic moment for Otterbein University.

In this issue, you'll read about the most ambitious comprehensive campaign in the University's history. We will secure a total of \$50 million in support of Otterbein and all that this University stands for in the higher education community.

This campaign is about **more** than any dollar amount. It's about the total value of Otterbein — our principles and what we stand for.

It's about a curriculum that is nationally recognized as a model by education experts for the smart way it blends the liberal arts with professional studies, while intentionally integrating direct experience into all learning.

It's about keeping excellence and opportunity affordable for all families whose students stand to benefit from Otterbein's transformational education, which is why we've committed to yet another tuition freeze coming in the 2015-2016 academic year. It's about our commitment to serve and advance a greater good.

Where Otterbein stands matters. And **now** is the time to make that clear. This is a critical moment in higher education. Many schools are trying to ensure their continued existence and relevance in a rapidly changing marketplace and economy. From where I stand, the world needs Otterbein and its graduates now more than ever. That's why this campaign matters and that's why we're **investing in our students first**.

This campaign will help ensure that Otterbein will **stand** strong among other great institutions in our country for generations to come. It will ensure Otterbein graduates are prepared to stand out as leaders and learners.

The campaign's goals, which are designed to support the priorities of our strategic plan, will build the foundation for Otterbein's future. The impact of the campaign will extend well beyond the boundaries of our time. You can read more about the funding priorities — Campus Renewal, Building a Model Community and Access and Affordability — starting on page 10.

I am proud to report that we are entering the public phase of this campaign ahead of schedule with

\$17 million already secured. Momentum is driving us forward because leaders, alumni and supporters are making the decision to stand with Otterbein.

Part of that excitement stems from our campaign leaders. Otterbein alumnus and current University Trustee **Kent Stuckey '79** and his wife, Laura, are excited to lead what they call a "vitally important" effort for Otterbein as the campaign chairs. As a team, they have successfully led numerous philanthropic endeavors in central Ohio. The Stuckey family legacy also represents four generations of Otterbein graduates and Kent is well-versed in the values that Otterbein holds most dear. His father, Dr. **Paul Stuckey H'83**, served as the pastor for Westerville's Church of the Master.

Steve and Patti Steinour are serving as the chairs of the Parent-Community Campaign Committee and are proud parents of an Otterbein student. Steve is the chairman, president and chief executive officer of Huntington Bancshares Incorporated. Patti is heavily involved as a community leader serving organizations that include the Columbus College of Art and Design, the New Albany Community Foundation and the United Way Women's Leadership Council.

The Faculty-Staff Campaign Committee is being chaired by Dr. Michael Hoggarth, department chairman for biology and earth science and an Otterbein professor and loyal donor for 21 years.

These leaders are Otterbein champions. I'm counting on them. And I'm counting on you. Throughout the next five years, I hope you'll also make a similar decision to stand with Otterbein in ways that you can, too, because ...

### Where We **STAND** Matters.

Sincerely,

Kathy A. Krendl



Laura and Kent Stuckey



Patti and Steve Steinour



Michael Hoggarth

# Otterbein Towers

Volume 87 • Number 2 • Fall 2014

## Features

### 10 Where We Stand Matters

Read more about the campaign for Otterbein and why the funding priorities matter.

### 12 \$15 Million for Campus Renewal

Creating a welcoming campus with great facilities is essential for Otterbein's learning environment.

### 14 \$18 Million to Build a Model Community

By investing in building a model community, we will ensure Otterbein graduates will stand out as leaders and learners.

### 16 \$17 Million for Access and Affordability

By providing access through affordability, we will ensure all who seek educational opportunity are able to afford Otterbein's excellence.

### 18 Partnerships that Matter

Otterbein's partnerships with key organizations are essential to a successful campaign.

### 20 Why Otterbein Matters: A Presidential Perspective

Three presidents — former and present — talk about why Otterbein matters.



## About the Cover

This issue's cover features the new campaign logo, "Where We STAND Matters." The Otterbein circle is intended not only to be reminiscent of the brick that shapes much of our picturesque campus, but it also speaks to the University's commitment to diversity with representation from unique affiliations, as well as diverse roles, academic interests and backgrounds in the Otterbein community. The Otterbein circle illustrates open pathways that lead in and out just as educational opportunity draws students into Otterbein and then leads each back out into the world prepared to lead a life of purpose. Most importantly, the Otterbein circle represents our commitment to stand together as one to ensure that Otterbein stands strong into the future as one of the great institutions of our country.

## Departments

### 2 Letters

### 4 Otterbein Here & Now

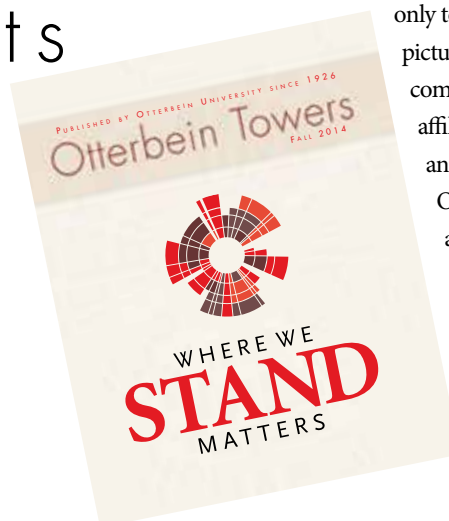
### 6 Around the 'Bein

### 22 Classnotes

### 33 From the Archives

### 34 Milestones

### 42 Alumni Matters







### Zeroing in on the Guys with the Doughnuts

On page 40 of the latest *Otterbein Towers* magazine, you featured a photo of four guys you were asking the readers to identify. I can tell you that the second young man from the right is **Scott Lacy '93**, who was my student assistant in International Student Programs and became a good friend of mine. The other guys look familiar, but I can't come up with their names. The house in the background is probably 123 Center St., which was torn down some time ago. At one time it served as the international house, but not at the time of this photo. Hope that helps!

**Chuck Vedder H'07**

The flag is the flag of ATO National Fraternity and the house was Scott Lacy's residence right across from the stadium.

**Ed Heller '95**

**Melissa DeVore Bruney '93** also wrote and said she believed the student to the far right was **Greg Brubaker '93** and that she recognized them all but couldn't remember their names. She said they are all of the class of 1993. Allen Prindle, professor of business, accounting and economics, also confirmed Scott Lacy's identity. Thanks to all for their efforts!

### Kudos for the Last Issue

Congratulations on the great job of the most recent issue of *Towers*. The research and how the University is working on obtaining job experience for recent graduates was outstanding.

Keep up the good work!

**Rev. Don Riedel '62**

## Mission Statement

*Otterbein University is an inclusive community dedicated to the whole person in the context of humane values. Our mission is to prepare graduates to think deeply and broadly, to engage locally and globally, and to advance their professions and communities. An Otterbein education is distinguished by the intentional blending of the liberal arts and professional studies, combined with a unique approach to integrating direct experience into all learning.*

## Staff

President of the University  
Kathy A. Krendl

Vice President for Institutional Advancement  
Heidi L. Tracy

Executive Director of Alumni Relations/Editor at Large  
Becky Fickel Smith '81

Executive Director of Mktg. & Communications/Managing Editor  
Jennifer Slager Pearce '87

Director of Publications/Chief Designer/Copy Editor  
Roger L. Routson

Director of Mktg. & Communications/Associate Editor  
Jennifer A. Hill '05

Senior Messaging Strategist/Associate Editor  
Gina M. Calcamuggio

Classnotes/Milestones Editor  
Becky Hill May '78

Photographers  
Edward P. Syguda, Ty Wright, Janet Adams, Holly Ritter '06, Annette Harting Boose '94, Erin Cochran Davis '11, Roger Routson, Gary Gardiner, Mike Cairns

Contributing Writers  
Jeff Bell, Gina Calcamuggio, Bruce Turner '67, Jenny Hill '05, Holly Ritter '06

Email:  
Classnotes/Milestones: classnotes@otterbein.edu  
Editor: rsmith@otterbein.edu

*Towers* (USPS 413-720) is published two times a year by the Office of Marketing & Communications of Otterbein University, 1 South Grove Street, Westerville 43081. POSTMASTER: Send address changes to *Towers*, Institutional Advancement, Howard House, Otterbein University, 1 South Grove Street, Westerville 43081.

Otterbein University is committed to providing a workplace that is free from discrimination. Otterbein does not discriminate on the basis of race, color, gender, national origin, religion, gender identity, sexual orientation, age, disability, genetic information, military status, or veteran status in admissions, in access to, or in treatment within its educational programs or activities, in employment, recruiting, or policy administration.

# Public Comments Sought for Accreditation

Otterbein University is seeking comments from the public about the University in preparation for its periodic evaluation by its regional accrediting agency. The University will host a visit Feb. 9-10, 2015, with a team representing the Higher Learning Commission of the North Central Association. Otterbein University has been accredited by the Commission since 1913. The team will review the institution's ongoing ability to meet the Commission's Criteria for Accreditation. The public is

invited to submit comments regarding the University to: Third Party Comment on Otterbein University, The Higher Learning Commission, 230 South LaSalle Street, Suite 7-500, Chicago, IL 60604-1411. The public may also submit comments on the Commission's Web site at [www.ncahlc.org](http://www.ncahlc.org). Comments must address substantive matters related to the quality of the institution or its academic programs. **Comments must be in writing. All comments must be received by Jan. 9, 2015.**



## WE'RE LOOKING FOR FUTURE CARDINALS!

**Tell us about promising, college-bound high school students** in your family or in your neighborhood who might find Otterbein a good fit. Please take a few minutes to complete and mail the form below or submit information online at [www.otterbein.edu/getinfo](http://www.otterbein.edu/getinfo). We'll be happy to send information about Otterbein University and why we're an up-and-coming ranked institution.



### PROSPECTIVE CARDINAL

Student's name \_\_\_\_\_

Address \_\_\_\_\_

City \_\_\_\_\_ ST \_\_\_\_\_ Zip \_\_\_\_\_

Telephone (     ) \_\_\_\_\_ ☐ male ☐ female

Student's email \_\_\_\_\_

High School \_\_\_\_\_

Graduation Yr. \_\_\_\_\_ Academic interest \_\_\_\_\_



### YOUR INFORMATION

Name \_\_\_\_\_

Address \_\_\_\_\_

City \_\_\_\_\_ ST \_\_\_\_\_ Zip \_\_\_\_\_

Telephone (     ) \_\_\_\_\_

Email \_\_\_\_\_

Your relationship to student \_\_\_\_\_



**John Carter '14**, BFA Musical Theatre, starred in Otterbein productions of *How to Succeed in Business Without Really Trying*, *Gypsy*, *Spring Awakening* and many others. Read more about him at [www.otterbein.edu/showcase2014](http://www.otterbein.edu/showcase2014).

☐ Please check here if you're willing to help with student recruitment efforts in your area.

**Please return this form  
in an envelope addressed to:**

Ben Shoemaker  
Office of Admission  
1 South Grove Street  
Westerville 43081







# Sept. 20, 2014

Marching in to the future! From the new turf and track to the new campaign fanfare performed by the Otterbein Marching Band, the Homecoming pre-game announcement was spectacular in every sense. (The 20-0 victory over Marietta was pretty great, too!) Learn more about the historic \$50 million "Where We Stand Matters" campaign and watch the unveiling online at [www.otterbein.edu/stand](http://www.otterbein.edu/stand).





compiled by Jenny Hill '05



Great strides: Otterbein runners begin the Kyle Miller Memorial 5K Run/Walk. More than 400 runners raised \$41,500 to create an Otterbein endowed scholarship in Kyle Miller's memory.

## Kyle Miller Memorial 5K Supports Scholarship Fund



Kyle Miller

Family and friends of Kyle Miller, an Otterbein student who died in a tragic kayaking accident in March, were touched when more than 400 runners participated in the Kyle Miller Memorial 5K Run/Walk on Aug. 24 in Hilliard, Ohio. The event raised \$44,225 to purchase hurdles for the new track and to endow a scholarship prize for junior or senior zoo and conservation science majors to fulfill their experiential learning requirements and who share Miller's passion for wildlife.

Miller was a zoo and conservation science major at Otterbein, a volunteer at the Ohio Wildlife Center and a gifted high school and college track and field athlete. In his application for Otterbein's zoo and conservation science program, he wrote, "I grew to love the environment and everything

that dwells in it. From the smallest critters in the ground to the highest birds in the sky, I've wanted to learn more and more about them and hopefully protect them from the dangers that interact with most species ... I am truly passionate about the environment. I love the outdoors and love the rain as much as the sun."

The event was a tribute to Miller's life and legacy. The Ohio Wildlife Center brought animals to educate the public about wildlife conservation and named an internship in his honor. More information about the Kyle Miller Memorial Fund can be found online at [www.kylemillermemoralfund.com](http://www.kylemillermemoralfund.com). More information about Otterbein's zoo and conservation science program can be found online at [www.otterbein.edu/zooandconservationscience](http://www.otterbein.edu/zooandconservationscience). 




# Michael Feldman Brings His Show to the Otterbein Stage

Michael Feldman's  
*Whad'Ya Know?*

Michael Feldman's *Whad'Ya Know?*, a nationally syndicated, comedy/quiz/interview radio show, brought more than 1,000 people to campus for a live broadcast from the Fritsche Theatre at Cowan Hall on Aug. 2.

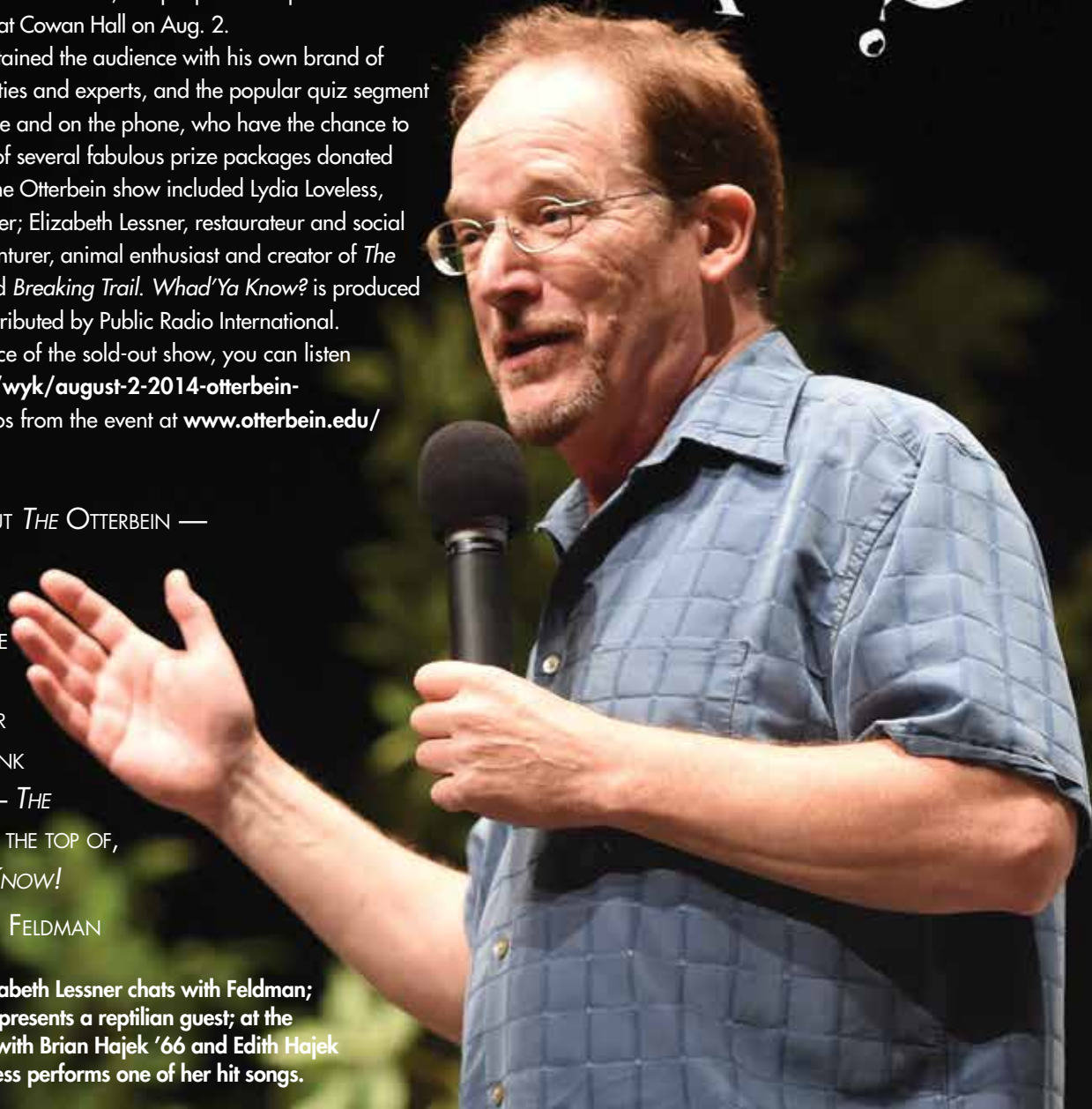
Host Michael Feldman entertained the audience with his own brand of humor, interviews with local celebrities and experts, and the popular quiz segment featuring contestants in the audience and on the phone, who have the chance to be on national radio and win one of several fabulous prize packages donated by local businesses. The guests at the Otterbein show included Lydia Loveless, alternative country singer/songwriter; Elizabeth Lessner, restaurateur and social activist; and Coyote Peterson, adventurer, animal enthusiast and creator of *The Reptile Show*, *Swamp Monsters* and *Breaking Trail*. *Whad'Ya Know?* is produced by Wisconsin Public Radio and distributed by Public Radio International.

If you weren't in the audience of the sold-out show, you can listen to it online at [www.notmuch.com/wyk/august-2-2014-otterbein-university-columbus-oh](http://www.notmuch.com/wyk/august-2-2014-otterbein-university-columbus-oh). See photos from the event at [www.otterbein.edu/whadyaknowphotos](http://www.otterbein.edu/whadyaknowphotos). 

FOR ME IT'S JUST OHIO STATE BUT *THE OTTERBEIN* —  
WHAT A GREAT AUDIENCE AT THE  
FRITSCH, AND SO EDUCATED I  
HAD TO TALK UP. SORRY ABOUT THE  
VIOLATION OF LONG ESTABLISHED  
CAMPUS CODES BUT BETSY LESSNER  
MAKES A HECK OF A ZOMBIE. THANK  
YOU FOR OUR GREAT RECEPTION — *THE*  
*OTTERBEIN* IS CLOSE TO, IF NOT AT THE TOP OF,  
PLACES WE'VE TAKEN *WHAD'YA KNOW!*

BEST, MICHAEL FELDMAN

Below, from left: Restaurateur Elizabeth Lessner chats with Feldman; animal enthusiast Coyote Peterson presents a reptilian guest; at the reception after the show, Feldman with Brian Hajek '66 and Edith Hajek '66; singer/songwriter Lydia Loveless performs one of her hit songs.







Members of the Class of 2018 head to the New Student Convocation, part of First Flight Activities to help make them feel welcome on campus when they first arrive in the fall.

# Introducing the Class of 2018

This year, Otterbein welcomed 562 members of the class of 2018 to campus. The class has a high academic profile with an average grade point average of 3.5 and average class rank in the 73<sup>rd</sup> percentile. The average ACT score is 24. The incoming class is more diverse than in recent years, with students of color making up 16 percent of incoming students. Men

comprise 42 percent of the class of 2018, and women 58 percent. Fourteen percent came from outside Ohio. They represent 22 states and three countries. Popular major areas of study are business, biology, nursing and health and sport sciences, but aligning with the national trend, the most popular major with this class is “undeclared.”



**Cabot Rea '78** spoke at the New Student Convocation this fall and taught new students the *Otterbein Love Song*.

## Student Organizations Win National Awards

### WOBN

WOBN, Otterbein's student-run radio station, recently won two national awards from College Broadcasters, Inc. (CBI). **Josh Overholser '14** and **Jon Bozeka '16** won an award for their play-by-play announcing of an Otterbein vs. Muskingum basketball game. Overholser, **Kyle Ripma '14**, **Chris Akins '14**, **Caleb Hastings '14** and **Nick Rhodes '14** won an award for a public service announcement they created for their Senior Year Experience class, *Media for Social Change*. The awards were presented at the annual CBI conference in Seattle in October.

### Mortar Board

The Otterbein Telioes chapter of Mortar Board, a national senior honorary society, won the Silver Torch Award from the national organization. This award is granted to chapters executing timeliness and dedication while exemplifying the ideals of scholarship, leadership and service. Mortar Board recognizes college seniors for their exemplary scholarship, leadership and service. To be considered, students must have a 3.0 GPA or be in the top 35 percent of their class.






## Society Dinner Held on Lawn of Howard House

More than 70 society members were honored at Otterbein's annual recognition dinner this year, which was held on campus on Friday, Sept. 19, as part of Homecoming Weekend.

This year's event, to honor Otterbein's most loyal donors, was steeped in history. It was held on the lawn of Howard House, to honor its 100<sup>th</sup> year and new role as home to the Office of Alumni Relations (see story on pg. 33). Howard House was named for President J. Gordon Howard (1945-1957), who initiated the first official giving program at Otterbein.

Important figures in Otterbein's history were in attendance, including Presidents Emeriti Brent DeVore and Tom Kerr, as well as current and past members of the board of trustees. And a historic announcement was made about Otterbein's future before it was made public the next day—the launch of the \$50 million “Where We Stand Matters” comprehensive campaign.

New members were inducted into the Joanne Van Sant Leadership Giving Society and the 1847 Society, two groups with historic names that are already supporting the University's future. The new tradition was a ceremonious start to Homecoming Weekend. See photos and a video of the event at [www.otterbein.edu/jvs](http://www.otterbein.edu/jvs). 



The annual recognition dinner, held on the Howard House lawn this year, included attendees **Connie Hellwarth Leonard '63** with President Krendl (top), and past president **Tom Kerr 'H71** with **Carolyn Boda Bridgman '50**. Heidi Tracy, vice president for Institutional Advancement, gave a presentation on the campaign (right).



## Annual Fund Sets Record

More than **4,800 donors** made 2013-2014 the most successful year for the Annual Fund yet. Alumni, parents, faculty, staff, students and friends donated a record-setting **\$921,637** during the 2013-2014 Annual Fund drive. The Annual Fund staff is already working hard to surpass this goal in 2014-2015. Every gift made to the Annual Fund counts toward the “Where We Stand Matters” campaign.





# WHERE WE STA

## The campaign for Otterbein's future

affirms that where Otterbein stands, and what it stands for in the higher education community, matters.

The campaign for Otterbein's future was officially announced at Homecoming on Sept. 20, 2014, as hundreds of alumni, students, faculty, staff and community members stood with Otterbein to cheer as the University embarked on the largest campaign in history — \$50 million.

We know that Otterbein's founders stood for bold ideals — believing women should teach and learn alongside their male counterparts. We know that Otterbein's leaders stood for shared governance and establishing an inclusive community — leading by example and reminding others that all members of our community should have a voice. That Otterbein faculty stood as true educational innovators setting the pace for others to follow — first, in 1969 when Integrative Studies was adopted as our core curriculum, and reaffirmed just three years ago when the University developed a 21st century curriculum. And long before the value of service learning was embraced by other institutions, we know that Otterbein graduates stood strong as faithful, committed servant leaders.

Curiosity, civility, critical thinking and compassion serve as the ground we stand upon to embolden Otterbein's unwavering commitment to advance a greater good.

And that is why...Where We STAND Matters. We will invest in our students first to ensure they are standing on firm ground for their futures.



# AND MATTERS

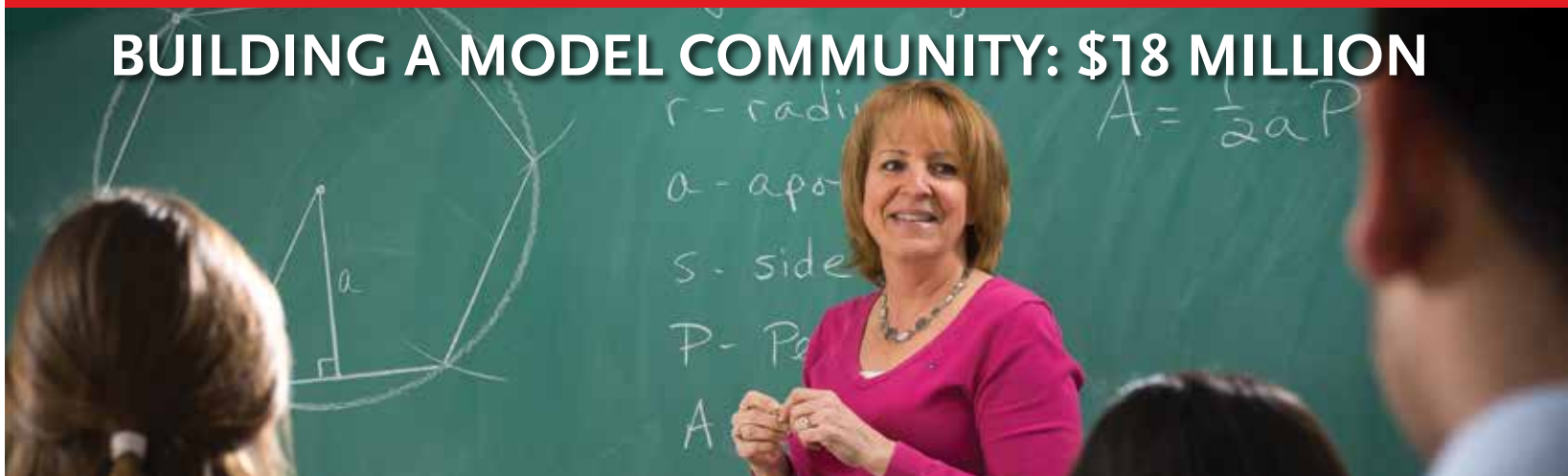
**\$50 Million Goal: Three Funding Priorities**

**CAMPUS RENEWAL : \$15 MILLION**



Advancing Otterbein's learning experience by enhancing facilities and green spaces

**BUILDING A MODEL COMMUNITY: \$18 MILLION**



Building a strong foundation of resources to foster innovation, creativity and learning

**ACCESS AND AFFORDABILITY: \$17 MILLION**



Ensuring Otterbein's excellence is an opportunity families can afford



# CAMPUS RENEWAL

## Otterbein's campus

is essential to our mission. It serves as the home to our students' learning experiences. Otterbein's facilities and green spaces are, in fact, among the university's greatest assets.

Whether it's a laboratory in the Science Building where students and faculty explore the fundamental questions of nature, or the Fritsche Theatre stage, where acting careers are launched, or the trees that shade historic Towers Hall and lure our future students — our campus connects faculty, students, staff, alumni and visitors.

Support of Campus Renewal priorities will provide resources to protect and enhance the learning and living

experience that so many students find transformative to their growth and discovery. This campaign priority also supports the master plan while creating a standing fund to maintain and enhance facilities in the future. Improvements have already been made with the resurfacing at Memorial Stadium and funds are now being raised to improve the Campus Center.

Campus Renewal will guarantee that Otterbein will long stand as a well-cared for and well-equipped place of learning and discovery. Our campus will be further distinguished for an environment that fosters the greatness we expect our students to achieve.





# GOAL: \$15 MILLION



"THE VISION OF BECOMING  
A MODEL COMMUNITY IS  
REALIZED AS MUCH THROUGH  
ITS PHYSICAL FACILITIES AND ITS  
WELCOMING ENVIRONMENT  
AS THROUGH RELATIONSHIPS  
AMONG ITS MEMBERS."

- PRESIDENT KATHY KRENDL



Renovations and improvements to the Campus Center, built in 1964, is key for enhancing the student learning experience.



With increased time and capacity for more teams to utilize these updated state-of-the-art facilities, the completed Turf and Track project is a powerful example of Campus Renewal.

## Long-Standing Loyalty



**Dave Lehman's '70** connection to Otterbein runs deep, going back to his boyhood when he would peek through the fence at Memorial Stadium to watch the powerhouse Cardinal football teams in the late 1950s and early 1960s.

He went on to make his own mark in Otterbein athletics, first as a member of the cross country and track teams and later as a highly successful coach in those sports at the University for more than 40 years. He retired from coaching earlier this year, but not before he and his wife, **Claudia Lehman H'97**, made a generous \$50,000 contribution to the \$2.1 million project to install a new track and synthetic turf playing surface at Memorial Stadium.

The gift was another example of Dave's love and loyalty to his alma mater. How else do you describe a man who convinced his wife to buy a house on West Street in 1972 based on it being in the shadow of Memorial Stadium? The Lehmans still live there after four decades of hosting pasta dinners for Dave's athletes and providing them with a home away from home.

"It's a loyalty thing for me. I never was one to think the grass was greener on the other side of the fence," says Dave, who has lived his entire life in Westerville and helped run his family's business, Culver Art & Frame Co., until he retired from the company in 2009. "I think we've got a pretty good product at Otterbein. It's worth supporting."

"Otterbein offers the opportunity to have a great four-year experience not just from a classroom standpoint but a life-education standpoint," he says. "We want to make sure future generations of students have the same great experiences as past generations have had at Otterbein."

For the full profile, visit [www.otterbein.edu/stand](http://www.otterbein.edu/stand).





# MODEL COMMUNITY

## To build a model community,

we must ensure a strong and stable link to resources. Such resources equip faculty to teach and inspire discovery as much as they help fund life-changing experiences for students.

Fellowships, research, faculty development, classroom and laboratory enhancements and creative campus initiatives are critical to the work we do at Otterbein.

If our faculty is responsible for challenging and inspiring students to realize their personal best, then we have a responsibility to provide them with the means, the tools and the support to help make that possible.

**Supporting the best ways to help our students learn.** What if all that stands in the way of a student's ability to make real contributions to his or her discipline is the chance to travel for research or an internship or some form of cultural immersion and engagement?

**Securing funds that enhance the faculty and student experience.** Immersive, hands-on learning experiences complement traditional methods of learning. Students need the opportunity to apply lessons in the real world, so they can own their knowledge. Faculty members deserve the same kind of opportunities, so they can enhance and advance their teaching through lessons learned in the field.

By investing in building a model community, we will ensure Otterbein graduates are prepared to stand out as leaders and learners — proven professionals of great moral intelligence.





# GOAL: \$18 MILLION



“WE THINK OF OTTERBEIN AS A COMMUNITY OF VALUES. THERE’S AN EMPHASIS ON EDUCATION AND ON COMMUNITY — ON GETTING INVOLVED AND MAKING AN IMPACT.”

- STEVE AND PATTI STEINOUR, PARENT-COMMUNITY CAMPAIGN COMMITTEE CHAIRS

## Supporting Our Scholars

**Mark Thresher '78** and **Debbie Scott Thresher '77** will tell you the best things in their lives can be traced to an Otterbein football game in the fall of 1975.

That was when Mark, a sophomore, says he first spotted Debbie Scott, a junior, in the crowd at Memorial Stadium. He decided he had to meet her and came up with a strategy to get his foot in the door at Debbie's sorority house. It worked — and he wasn't even put off by the fact she had curlers in her hair the evening they were introduced.

“That was quite a first impression,” Debbie says, “but he stuck around.”

The two started dating and Debbie, a music education major, selected Mark, an accounting major, as her escort when she was elected Homecoming Queen in 1976. They married four months after Mark's graduation.

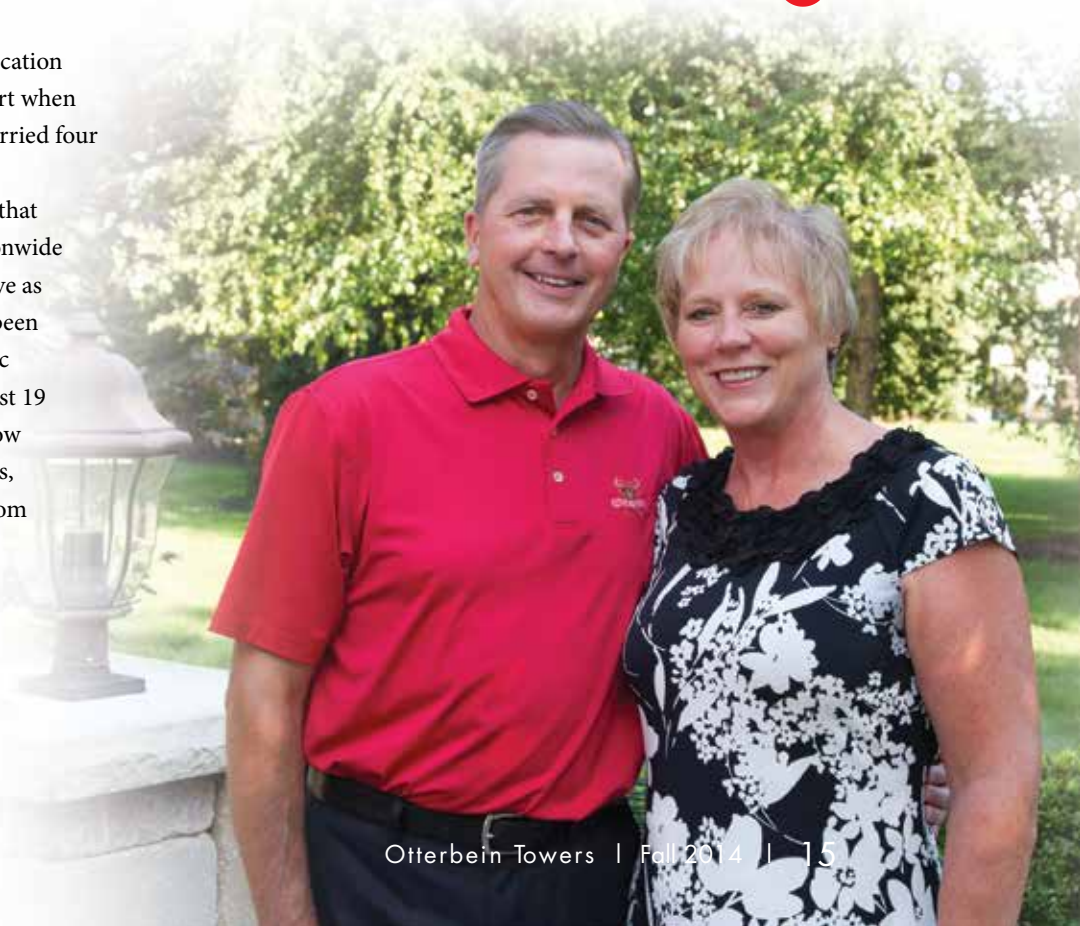
From there, the Threshers began building a life that has seen Mark advance to top leadership posts at Nationwide Insurance — he's now chief financial officer — and serve as chairman of Otterbein's board of trustees. Debbie has been a music educator, first as a teacher for 10 years in public schools and at Powell United Methodist Church the past 19 years. As parents, they raised daughters Chelsea '05, now an eighth-grade English teacher in suburban Columbus, and Kaylea, who holds a doctor of pharmacy degree from Ohio Northern University.

The Threshers have never forgotten how their experiences at Otterbein helped prepare them for life. So it became obvious to the couple that supporting the university's \$50 million “Where We Stand Matters” campaign was a critically important thing to do. As a result, the Threshers are making gifts totaling \$500,000

to establish a scholarship fund for music education majors and a fellowship that will support experiential learning at Otterbein.

“This is something we needed to do as a couple and give back to what nurtured us so well,” Debbie says. “Otterbein is obviously where it all started for the two of us.” Adds Mark, “Deb and I wouldn't be here doing what we do today without Otterbein. The best thing about an Otterbein education is it prepares you for life, not just a career. You learn how to be a person who can communicate and solve problems.”

For the full profile, visit [www.otterbein.edu/stand](http://www.otterbein.edu/stand).







# ACCESS AND AFFORDABILITY

## Otterbein stands for opportunity,

and has since its first days. All students — regardless of their financial circumstances — should be able to access and afford an Otterbein education. This value harkens back to 1847.

Otterbein stands for inclusiveness. Otterbein values talented, promising students who are eager to learn, to lead and to better themselves so they can better their world. All who seek educational opportunity are welcome at Otterbein.

Otterbein stands for learning. We believe in rewarding hard work and offering support to make sure more students have the opportunity to benefit from our experience. Those who stand to gain the most from Otterbein deserve the opportunity to call themselves Cardinals.

Raising funds for scholarships ensures Otterbein will continue to recruit and graduate first-generation college students. The university will be better equipped to recruit and compete for students whose academic credentials and personal potential stand to grow exponentially because of the learning environment they will find at Otterbein.

Many of our alumni stand where they do because Otterbein stood by them — giving each a chance to do and be more.

Investing in Access and Affordability will ensure the same opportunity will be afforded to the next generation of Cardinals.



# GOAL: \$17 MILLION



"I STAND WITH OTTERBEIN BECAUSE THE VALUE OF OUR COLLECTIVE EFFORTS IS MORE THAN WHAT ANY ONE OF US COULD EVER DO ALONE."

- MICHAEL HOGGARTH, FACULTY-STAFF CAMPAIGN COMMITTEE CHAIR,

PROFESSOR AND CHAIR OF THE DEPARTMENT OF BIOLOGY AND EARTH SCIENCE

## Changing Lives is Our Shared Story

It didn't take long for Miguel Martinez-Saenz to decide that Otterbein is a place where he could work shoulder-to-shoulder with faculty members passionate about lighting the fire of learning in students.

"When I left my interview and visit, I knew I wanted an offer," recalls Martinez-Saenz. He got his wish in January when Otterbein hired him to become the University's provost and vice president for academic affairs. The post as Otterbein's chief academic officer is the next step in a fast-rising career that included a 10-year stay at Wittenberg University in Springfield, Ohio, where he was a philosophy professor and administrator, and for the past three years as dean of the University College and associate provost for student success at St. Cloud State University in Minnesota.

His early experiences here have confirmed some of his initial impressions of the university. One is that President Kathy Krendl has built a strong team of college deans and top administrators. Another is that Otterbein has faculty members with "unbelievable talent and commitment to student learning."

One of the main points he makes is that many students become passive learners as they move through the U.S. education system.

"Students can identify key points in their lives when learning is no longer fun," says Martinez-Saenz. "That little fire for learning has been extinguished. That's the task before us — how do we create the conditions for students to light up again, find their passion and see purpose in actually learning more?"

"The Integrative Studies Program is at the heart of our

commitment to liberal arts education and ensuring students are prepared to work and live in a context that is changing quite rapidly," says Martinez-Saenz. "The Five Cards [Five Cardinal Experiences], similarly, demonstrate an attentiveness to the importance of bringing to life the things that matter and the things that are integral to classroom instruction."

He also says Otterbein's intentional blending of the liberal arts with professional studies is a necessity in today's world and sets the University apart in important ways.

For the full profile, visit [www.otterbein.edu/stand](http://www.otterbein.edu/stand).



### No Increase in Tuition for Second Year in a Row

The Otterbein board of trustees recently approved holding undergraduate tuition steady for the 2015-2016 academic year.





# PARTNERSHIPS

Seated at the work table in her office at Roush Hall, President Kathy Krendl tapped a thick file folder that's chock-full of ideas on how the University can forge new partnerships with companies and key organizations in central Ohio.

"This file will get bigger," she said. "To be a valued educational resource in this region, we must constantly evaluate what the needs are, how they align with our mission and how they will make us of even more value to the community."

There are myriad examples of Otterbein doing exactly that, including the recent establishment of programs to address expected shortages of systems engineers and primary-care physicians in Ohio. It's essential in helping ensure that Otterbein excels at preparing students for good-paying jobs in rewarding careers.

Krendl and Otterbein board of trustees Chairman **Mark Thresher '78** emphasized the University's interest in building such partnerships when they spoke at an Oct. 24 event at Nationwide Insurance headquarters in downtown Columbus. The event introduced Otterbein's \$50 million "Where We Stand Matters" campaign to Columbus' corporate community as well as foundations, government officials and other key stakeholder groups.

The event also provided an apt setting for the University to present the Mary B. Thomas Award to retired corporate executive **John King '68** and his wife, Susie. The award, named in memory of Otterbein benefactor and trustee **Mary Burnham Thomas '28**, is the University's highest honor for philanthropy.

The Kings have given generously to Otterbein through the years, including leadership gifts for the renovation and expansion of the Science Center, construction of the Clements Recreation Center and establishment of the Campus Wireless Project. In addition, John King, who rose to the executive level at Electronic Data Systems and was a co-founder of Perot Systems, served as an Otterbein trustee for 18 years, including as chairman of the Advancement Committee, before retiring from the board in 2013.

In her remarks at the Nationwide event, Krendl said she believes the values and missions of the companies and organizations in attendance have much in common with Otterbein's vision and purpose.

"You'll discover Otterbein people stand out as leaders and critical thinkers who know how to immediately integrate into your teams," she said.



**John King '68 with wife, Susie, winners of the Mary B. Thomas Award.**

Thresher cited several examples, starting with the University's new systems engineering major that is scheduled to launch in fall 2015.

Designed in response to Ohio's need to fill an estimated 34,000 engineering jobs by 2018, the goal of the new major will combine the principles of mechanical, industrial and electrical engineering with the university's nationally recognized Integrative Studies program for the teaching of the liberal arts. According to program Director Gary Maul, the vision is to provide students with the interdisciplinary, technical and team skills needed to define and solve multifaceted engineering problems.

"We've created an approach to learning," Maul said, "that will produce well-rounded graduates with a strong grasp of engineering

fundamentals accompanied by a broad understanding of the complex nature of those problems."

Thresher also pointed to Otterbein's effort to do something about a national shortage of more than 45,000 primary-care physicians within the next decade through a new partnership with the Ohio University Heritage's College of Osteopathic Medicine. This Early Assurance Program (EAP) is aimed at increasing the pipeline of primary-care doctors in Ohio.

Thresher also announced a new partnership between Otterbein and Nationwide to offer high-end programming courses for computer coders through a training "boot camp" in industry parlance. The non-credit courses, which will begin in 2015, will be marketed to working adults in the technology field.

Corporate partnerships also extend into Otterbein classrooms. Last summer, retired Honda International Vice President Toshikata Amino served as co-instructor with Professor of Management and Human Resources Don Eskew on an MBA course that examined international business strategy from the perspective of Honda executives and the automaker's suppliers. Amino took the idea for the course to Eskew at the suggestion of President Krendl, who met Amino during a visit to Japan in 2012.

Whether it's interns or graduates, Krendl said the educational landscape is distinctive.

"It's because Otterbein graduates not only believe they have a responsibility to advance their professions and the industries they serve," she said, "but that their values and Otterbein education challenge them to advance a greater good in doing so." •



# THAT MATTER



## Sharing the Story

There have been many events in the last few months to announce the “Where We Stand Matters” campaign for Otterbein’s Future. Here are photos from a few of them.



Michael Hoggarth, the Faculty-Staff Campaign Committee chair, gives a presentation at the Welcome Back event for faculty and staff on Aug. 19.



Attendees of the Oct. 24 event at Nationwide Insurance listen to details of the campaign from President Krendl and Board Chairman **Mark Thresher '78**.



Provost and Vice President for Academic Affairs Miguel Martinez-Saenz (in circle) addresses the Class of 2018 at the New Student Convocation on Aug. 21.

*Contributing writers for the preceding segments include  
Gina Calcamuggio and Jeff Bell.*

**Manny Brown '09** (right) speaks to attendees at the Society Dinner on Sept. 19. (see page 9)



Many banners and flags introducing the campaign were unveiled at Homecoming on Sept. 20.



# WHY OTTERBEIN MATTERS:

## As President Krendl

*prepares the Otterbein community for the largest comprehensive campaign in this University's history — there was only one place to go for understanding why a school like Otterbein matters. To advance Otterbein's future — you value and look to your past.*

*On September 30, three Otterbein presidents gathered in front of the fireplace in the residence that Frank and Vida S. Clements once called home, before it served as the president's residence. All three of these leaders have or do call the West Street residence home. When they met, they shared memories of the families raised, the guests hosted and the events housed within the walls.*

*They also shared stories of traditions, Otterbein values and their hopes for the future. Each leader represents an era of Otterbein*

*history. President Emeritus Thomas Kerr was a builder of ideas — his leadership reflected an expansion of Otterbein's knowledge infrastructure with the development of the University's nationally acclaimed Integrative Studies curriculum and shared governance model. President Emeritus C. Brent DeVore was a builder of place — his leadership reflected expansion on nearly every front of campus, from academic buildings to residence halls in a heightened call to service. Mindful of her role to ensure Otterbein stands strong into the future, President Krendl asked these two former presidents to share their insight as her legacy focuses on building Otterbein's 21st century model community.*

*As leaders, their legacies are their own. But the view from where they stand has been shared. And from their personal perspectives there is complete agreement on one subject: what Otterbein stands for and its commitment to put students first truly matters.*

### ON STUDENTS FIRST

**Krendl:** What do you think of the campaign's call to invest in students first?

**DeVore:** That's what we're all about. We've always said that we're a college of opportunity for all students regardless of their socio-economic backgrounds. That's been true of Otterbein since 1847. We really need to invest in our students because we are truly a very unique institution complementing the other large state institutions.

**Kerr:** The only reason for the university existing is the fact that it's about the students. The sense of the total community and its educational impact, both the curricular and the co-curricular programs, create a unique and really outstanding environment.

### ON MODEL COMMUNITY

**Krendl:** What do you see as the core values that drive Otterbein's model community?

**Kerr:** The diversity of the University has been a real strength in its values. The openness and acceptance going back to the acceptance of the Japanese internees in World War II, when that was not popular, or women in the first classes and in the early faculty, when that was not a popular concept in the country. Otterbein has always been a leader in service and a leader in its use of diversity as an educational experience for students.



**Former President Thomas Kerr (1972-1984), President Kathy Krendl (2009-present) and former President C. Brent DeVore (1984-2009).**



# A PRESIDENTIAL PERSPECTIVE



**DeVore:** I always felt that if you have the opportunity to go to Otterbein, you have the responsibility to do something in your life to give back. Another thing that underscores the institution is the sense that it's caring, it's unpretentious — it does not like arrogance at all. We want people to be open to ideas and to the involvement with others and the faculty and staff. It amazes me the way they [faculty and staff] would be involved with students in helping them be successful.



Otterbein has these places all over the campus for people to come together ... to help them feel comfortable, to be supportive and to be successful with the Otterbein experience.

## ON WHY OTTERBEIN MATTERS

**Krendl:** One of the goals of the campaign is to make an Otterbein education more affordable and more accessible. What is the most important thing that makes an Otterbein education unique that would encourage people to invest in Otterbein?

## ON CAMPUS RENEWAL

**Krendl:** As you think about Campus Renewal, what spaces should we respect and protect as part of the legacy and the message that you get when you arrive on the Otterbein campus?

**Kerr:** The greatest building program in Otterbein's history was in the 1960s with the growth that occurred. Certainly, there have been a lot of new buildings and changes since then — some in my presidency and many more in Brent's. It's a challenge to keep up with facilities. I'm amazed by the new track and turf that allows a much different use of the field with newer technologies.

The same is true of the Campus Center, which was opened as a new facility when I was a faculty member. That was a long time ago. Technology has changed a lot of things including how students interact. Everything is different than it was in earlier periods — for socialization, for learning, for communications. The Campus Center needs to reflect those changes.

**DeVore:** Something different has been happening with facilities on all campuses. A library used to be a place where all you knew then was, "Shh! Be quiet!" Now, we've added food courts to be inviting for a place not only to study, but to converse.

The same is true with the Campus Center. It used to be a place that you went to and ate your meals. But [it] needs to be more open and inclusive to bring students to another gathering place to meet outside the classroom, whether it be with fellow students or faculty members.

**Kerr:** I think it's the integration in the whole community — the educational experience; the strong component of service along with programs like Integrative Studies, which preserve the liberal arts; and the traditions that make the Otterbein community a unique experience. Certainly other schools have elements of these ... but the way that Otterbein has them working together makes it a unique experience of high value.

**DeVore:** We are a quality alternative to a large public institution. Now having said that, I have three degrees from state institutions in Ohio. But this is different. Not every student is meant to go to a mega-university or a large place. In the admissions process, we should not admit a student for whom we cannot provide the support system. Part of our mission is to help students be successful. We've been doing this with high quality since 1847.

**Krendl:** How would you finish the sentence, 'I STAND with Otterbein ...'?

**DeVore:** I stand with Otterbein because of our proud history of helping all students with potential succeed.

**Kerr:** I stand with Otterbein because it's a university of opportunity. It has provided countless opportunities for students. And [the] strength of the sense of community is so exceptional that it distinguishes Otterbein from many other schools.



**Editor's Note:** More of the presidents' recollections, their favorite traditions and success stories, and even a fun prank that one President didn't let get the best of him can be found as an exclusive online extra at: [www.otterbein.edu/towers](http://www.otterbein.edu/towers).





compiled by Becky Hill May '78

Gifts listed in Classnotes are \$50,000+.

**1950** reunion year  
alumni weekend 2015

**Bob Arledge '55** competed in the pole vault event at the National Masters Track and Field Championship in Winston-Salem, NC, in July. Competitors ranged in age from 30 to 97. He was a close second to the reigning champion, missing first place by less than 0.2 meters.

**Sonya Stauffer Evans '56** and husband, **Bill Evans '56**, were honored by the Greater

Columbus Community Helping Hands Inc. at their ninth annual scholarship and awards celebration. GCCHH is a nonprofit organization consisting of volunteers committed to service, programs and activities that enhance educational opportunities for youth.

**1960** reunion year  
alumni weekend 2015

**Donna Kesling Franer '60** and her husband, Charles, celebrated 50 years of marriage in July. They celebrated with their two children and seven grandchildren.

**Phylis Bush Miller '64** was awarded the Nathan Tucker Award, given to honor individuals for excellence in contributing to make Mt. Gilead, OH, a better place to live. She is very active in the Morrow County Historical Society, leading tours of the local museum and working daily during the county fair at the Society's log cabin.

**1965** reunion year  
alumni weekend 2015

**Kathy Quintilian Pinson '68** retired from Trinity Preparatory School in Winter Park, FL, in June after 20 years. She served as English department chair, director of studies, and for the last four years, as director of curriculum. She and her husband, Rick, now make their home in Palm Coast, FL.

**MaryAnn Everhart-McDonald '72** was recognized as Sports Medicine Teacher of the Year for 2013-14 by Riverside Methodist Hospital-OhioHealth Department of Medical Education.

**Catherine Triplett Holley '76** retired from teaching high school English in May. She taught 22 years at Reynoldsburg High School, OH, and 12 years at Logan Elm, OH, where she also directed nine plays.

**Deborah Banwart Lewis '77** is the executive director of the Los Angeles Children's Choir.

**Chris Jansing '78** was named senior White House correspondent for NBC News in May.

Giving  
Note

Otterbein Trustee **Nevalyn Fritsche Nevil '71** has invested in Otterbein with a commitment to the University's theatre facilities.

These **Class of 1949 alumnae** meet the third Wednesday of August every year. This year their visit coincided with a new student orientation where the ladies noted, "You can still feel the same Otterbein spirit."

Front, **Shirley Hanaford Philley**, **Barbara Stephenson Lyter**. Back, **Marie Anderson Murray**, **Evelyn Widner**, **Alice Walters Stoddard**.



**Bruce Keck '60** performed the theme and variations tuba solo, *Beelzebub*, with the Oak Ridge Wind Ensemble at the Memorial Day Concert in Oak Ridge, TN.

**Gregory Jewett '78** retired from Cooper Tire after more than 33 years and moved to Lexington, VA. He joined the staff of Fellowship of Christian Athletes there this summer. While at Otterbein, he served as president of FCA his senior year. While coaching track and field at University of Findlay, he started a huddle there and advised them for more than 30 years.

**David McKee '78** was elected vice president of the Ohio Mortgage Bankers Association Board of Trustees Executive Committee at its convention in May. He is vice president of Priority Mortgage Corp., Worthington, OH.

**Carol Comanita '79** was inducted into the New Philadelphia High School, OH, Athletic Hall of Fame in the inaugural class of 24 individuals and one team. She is recognized for her work as a basketball official in six Division I conferences, coaching in NCAA

regional tournament games and working in the American Basketball League.

**Christie Comanita '81** was named Outstanding Public Service Employee by the State Bar of Arizona Tax Law Section in May 2013. In November, she received the John A. Greene Award for Excellence from the Arizona Department of Revenue for exemplary service to the State of Arizona.

**Daniel Pohl '81** was honored with the Life Membership Award at the Ohio Association of College Admission Counseling's annual conference in Columbus in June. He was selected for the award because of his commitment and outstanding contributions to OACAC and 32 years of service to the admissions profession. He has been an admissions counselor at The Ohio State University for the past 15 years, but began his career at Otterbein in 1982.

**Kathy Kees '82** retired in 2012 after teaching fifth grade for 30 years at Mark Twain Elementary in Westerville. Her nephew, Ben Folts, is an incoming freshman this fall.

**Tammy Perakis Wallace '82** was elected to the Ohio Museum Association board of trustees this spring. She is the only representative of a university-affiliated art museum among the board's 21 members. She was promoted to assistant director of Ohio Wesleyan University's Richard M. Ross Art Museum in December 2012.

**Anita Mauler Albaghli '83** is a senior executive unit leader with Avon, the highest level

### Please Note

Please note: The classes of **1970, 1975, 1980, 1985** and **1990** will be having reunions at next year's Homecoming, Sept. 25-26, 2015.

in the Avon sales leadership organizational structure. She was also featured in a book, *A View from the Top*, a compilation of heartwarming stories of triumph and persistence.

**Jerry Fairchild '86** is local sales manager for WDFX-TV Fox 34 in Dothan, AL.

**Susan Gaskell Merryman '88** is vice president of communications at OhioHealth in Columbus.

During this season of giving consider **making a gift in honor of someone important to you**. It is a great way to support Otterbein's mission and is a living testimonial that keeps on giving. Your gift can be made in honor of a mentor, beloved friend or family member. Such a gift creates a legacy that memorializes the person and is appreciated by the honoree as well as Otterbein. To learn more **please contact Candace Brady at 614-823-1953 or cbrady@otterbein.edu**.

Giving Note

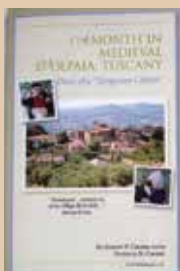
**Emily Smith '65** (sitting) shares her needlework talents with Lifeline of Ohio's Shawls of Support program. The gift of a handmade shawl honors local organ and tissue donors and provides comfort to their families during a time of tragedy.



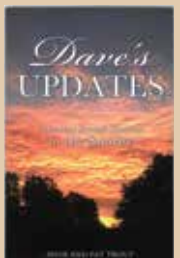
The *S.S. Vaud-Villities*, a variety show presented in Columbus in April, featured several Otterbein alumni. Front row: **Jami Flora '82, Holly McFarland '78, Lindsay Draper '09** and **Maggie Ellison '10**. Back row: **Sheri Brock '83** and **Johnny Steiner '96**. Not pictured is **Kent Stuckey '79**.



## Otterbein Book Corner



**Robert Crosby '50** has written a book, *A Month in Medieval Volpaia, Tuscany: Diary of a Temporary Citizen*. Companionship, food, wine and song are woven together to tell the story of a couple's annual journey.



**David Trout '66** and his wife, Pat, published a book, *Dave's Updates*, about his experiences during diagnosis and treatment for esophageal cancer. The book was published by Pat after Dave's death in the hope that it will help others facing similar circumstances.

**Rayshawn Wilson '02** has published a book entitled, *Lionheart: Coming From Where I'm From*, chronicling his turbulent life growing up in housing projects during the height of the crack cocaine epidemic, placement in multiple foster homes and ultimate incarceration. It is a story of motivation, triumph and redemption. The book was edited by **Andre Lampkins '03**.



**John Hoover '64** has published a book, *The Uniting Power of Conflict, A Psychologist's Proven Strategies for Real Life Situations*. He provides tools on how to use conflict as an asset in our lives.



**Valerie Ingels Woebkemberg '76** and **Sylvia Ingels Hill '79**, together with their sister, Diane Ingels, published *The Story the Little Christmas Tree Told*. The book is an adaptation of a short story written by their great-grandmother in 1923.



The book was awarded the Dove Seal of Approval by the Dove Foundation in 2013. Woebkemberg visits schools and libraries sharing the story with children and speaking about the writing and publishing process.

**Michael DeVine '03** has published his first book, *Failure to Launch: Guiding Clinicians to Successfully Motivate the Long Dependent Adult Child* through Jason Aronson Publishing.



**Polly Moore '88** received her master's degree in fine arts in creative nonfiction from Ashland University in May. She is the health improvement liaison at Quantum Health, Worthington, OH, where

she administers behavioral incentive programs for self-funded insurance plans.

**Deborah Shandor Bruce '89** earned her doctorate degree in secondary English education/

literacy from Kent State University in 2012. She taught two years at the University of Buffalo as an adjunct professor before accepting a full-time faculty position at Houghton College, NY, where she is an

assistant professor of literacy education. Her husband, **David Bruce '90**, is an associate professor of English education at the University of Buffalo Graduate College of Education.



**Christie Anderson '93** joined the team at Northwest Veterinary Specialists in Portland, OR, in May 2013. She is a board-certified veterinary oncologist.



Updox runs on Tan and Cardinal Pride! Updox, the industry leader for physician connectivity CRM solutions, boasts four Otterbein alumni within the organization, which is almost 20 percent of the company. Pictured clockwise from top left are **Andrew Sutter '14**, finance & accounting specialist; **Aisling Reynolds Babbitt '91**, director of marketing; **Mike Harris '96**, vice president of development; and **Michael Morgan '93**, chief executive officer.

**Charles Rosen '89** is the legislative chair at Ventura County Association of Health Underwriters in CA.

**Kevin Youskievicz '90** was featured on Discovery Channel's *Road to Sturgis-Ohio Bike Week 2014*. He has been employed with the Sandusky, OH, Police Department since 1996.

**Steven Harn '91** is a professor at St. Leo University, St. Leo, FL. He teaches U.S. history, political science, Native American history and military history.

**Jeff Hill '91** completed his doctorate degree in organizational management at Capella University in February. He lives in Delaware, OH, with his wife and two dogs.

**Bryan Knicely '91** is the executive director of the Evansville Museum of Arts, History and Science, Evansville, IN.

**Melissa DeVore Bruney '93** is a development associate at the Children's Grief Center of New Mexico, Albuquerque. She is responsible for grant and corporate funding for the agency, which provides support for children, youth and young adults ages 5-25, and their families who have suffered the death of a loved one.

**Kelley Grant-Kelley '93** has landed a three-book fantasy contract with Harper Voyager Impulse. The first of the trilogy will be released in April 2015. She was chosen from a field of 4,500 entries.

**Larry Gifford '94** launched an international radio consultancy, Larry Gifford Media, working with radio station groups and radio and podcast talent in the U.S., Canada, Australia and South Africa. He also hosts *The Radio Stuff* podcast on iTunes, Stitcher, TuneIn and Swell.

**Paige York '95** is director of business development at ReVision LASIK and Cataract Surgery Center in Columbus. She started a program called ReVision Gives Back, which raises money for local charities. In January, the center raised \$2,000 for the Westerville ShareBacAPac program which provides bags of at least 10 healthy, nutritious items to Westerville students who are at risk of hunger during the weekends.

**Michael Harris '96** joined Updax as vice president of development. He will lead the staff responsible for new products and services that further enhance the value of the Updax Direct Network electronic health records.

**Chad Myers '96** is a front-end web developer at Limited Brands, Columbus.

**Wesley Thorne '96** received the National Association of Colleges and Employers Chevron Award for innovation in career services in June. He developed Campus Engagement Day, a daylong conference at Carnegie Mellon University that allows employers to build relationships with faculty and student organizations.

## Otterbein Family Reunions

**Plan your family reunion at Homecoming 2015, Sept. 25-26!**



### Three Generations at Graduation

At the Otterbein Commencement ceremonies in May, three generations celebrated the graduation of **Jonathon Juergens '14**, son of **Melinda Selby Juergens '85**, grandson of **Rev. Charles Selby '57** and **Janet Risch Selby '60**.

### Gribler Reunion

There are always many Otterbein alumni at the Gribler reunion held annually in August:

**David Speelman '68, Cathy Gribler Speelman '71, Becky Lust Gribler '67, Mike Gribler '69, Joan Hopkins Albrecht '50, Darcie Gribler D'Ascenzo '97, Joanne Klepinger Dimer '50, Dick Bridgman '49, Carolyn Boda Bridgman '50, Jennifer Speelman Gibson '01, Rocco D'Ascenzo '97.**



### 39th Annual Reunion of the Friends of Clarice Burton

Clarice Burton rented her upstairs rooms at 133 N. West St. to nearly 100 Otterbein men over the course of nearly 30 years from 1946-1975. In 1975, her "Burton Boys" established the Clarice Burton Memorial Scholarship Fund for those seeking a pre-ministerial education. **First**

**row: Terry Ann Schamber Hartzell '73, Katie (Lang) Will with son (Collin Will), Derek Fisher with Brandon, Jennifer Fisher with Alina.**



**Second row: Elaine Schreckengost Weaver '71, Denise Lang (widow of Jerry Lang '71), Amanda Lang, Jim Brubaker '71, Joy Roberts Brubaker '72, Marlene Dray, Fred Dray '70, Brian Hartzell '70. Third row: Robert Bloomquist '72, Gloria Frank Bloomquist '72, Gail Williams Bloom '72, Sharon Shaffer, Virginia Schreckengost '51. Fourth row: Geoff Astles '70, Janice Ciampa Astles '72, Jutta Zwyer, David Wood '70, Karen Elvin, Fred Bohse '65, Chuck Shaffer '70, Jonathan Bloom, David Bloom '72, Florence Gee Lowe '67.**



**Katie Peyton McGrath '97**, senior vice president and director of human resources at Fahlgren Mortine, was named Small Organization HR Executive of the Year by *Columbus CEO* magazine in August. She created the agency's first formal professional development program, a peer-to-peer recognition program, implemented four new perks for employees as well as developed a philanthropic program.

**Bryan Worra '97** won the 2014 Elgin Award for Book of the Year from the Science Fiction Poetry Association for his book, *Demonstra*. He is currently a freelance nonprofit grant writer in California.

**Nikki Buran-Padovano '98** is an account executive with the Wilson Dow Group (WDG). WDG supports executive leadership in the health care and pharmaceutical fields by partnering with marketing, sales and training teams, preparing them to successfully

execute brand strategy, and inspiring them with live experiences that create emotional connections with the brand and potential patients.

**Heather Graham '98** is a disability claims manager at Opportunities for Ohioans with Disabilities.

**Brian Miller '98** was named the new fire chief for Westerville in September. He is a 15-year veteran and former deputy chief of the Westerville Fire Department.

**Chuck Salmons '98** was recently elected president of the Ohio Poetry Association (OPA). With members in the U.S., United Kingdom and Mexico, OPA promotes the art of poetry and supports poets and those who appreciate poetry.

**Scott Arthur '99** is the vice chancellor of advancement at Anschutz Medical Campus at the University of Colorado in Denver.

**Amber Allensworth '00** is a creative lead in professional development at McGraw-Hill Education in Columbus. She oversees the creative strategy and maintains branding consistency for professional development for all of their K-12 products.

**Donna Valput Hanly '00** was recognized by the Ohio Organization of Nurse Executives as the Nurse Leader of the Year in November 2013. She is senior vice president and chief nursing executive for OhioHealth.

**Thomas Schrier MBA '01** is vice president of business development and sales at Alchem International in Missouri City, TX. Alchem manufactures plant-based chemicals for the pharmaceutical, nutraceutical and cosmetic industries.

**Marian Lerner '02** was an adjunct professor in graphic design at Columbus State Community College, where she earned an associate degree in 2013. From Aug. 2010 to July 2011, she obtained Teaching English as a Foreign Language certification from ICAL, London, England. She

taught English in Zielona Gora, Poland, for one year before returning to Columbus.

**Rebecca Yocom '02** is a project coordinator at Nike, Inc., in Beaverton, OR. Her responsibilities include instructional design and assisting with launching, training and development. She also earned her master's degree in education and organizational resources at Oregon State University in June.

**Joe Dallacqua '03** won the 2013 Jebby Award for Local Performer of the Year Lead Male in a Play for his performance in *A Streetcar Named Desire*. The Jebby Awards annually recognize the best performances by the local Columbus theater community. He is a web designer by day, actor by night.

**Audrey Hueckel Hasson '03** won an Ohio Valley Chapter of the National Academy of Television Arts and Sciences Emmy for her role as host of WOSU Public Media's *Broad & High: The Ultimate Intersection of Arts & Culture* series in August.

Giving Note

Otterbein Trustee **Peggy Miller Ruhlin '79** has made an estate commitment to Otterbein for the benefit of the University's endowment. Her generosity helps ensure the strength of the University in perpetuity.

**Becky Snow DeHart '97** is the director of education and events at the Players Guild Theatre in Canton, OH.



**Rod Skaf MBA '99** earned MetLife's Americas Council level of recognition, the company's highest level of sales achievement. This is his eighth time qualifying for this achievement out of his 12 years with MetLife.



## Father Wins Inaugural Model Community Family Award

Douglas Bean has worked hard to support his family of eight and send three children to Otterbein. For being an exceptional role model as an Otterbein parent, Bean was awarded the inaugural Model Community Family Award at Family Weekend on Nov. 1.

This newly-established award is given in honor of the outstanding and significant contributions family members make in the lives of Otterbein students by preparing them for college and supporting them while they are attending Otterbein.

Bean was nominated by his daughter, **Emmanuela Bean '16**, an English major, because of the work ethic he demonstrated during a difficult time for their family. In her essay, Emmanuela wrote, "Nothing I experience will ever be as difficult as what he's been through, and it is my driving force in studying at Otterbein."



**President Kathy Krendl, Emmanuela Bean '16, Douglas Bean and Dean Bob Gatti at the Award presentation during Family Weekend.**

Douglas was laid off from the *Columbus Dispatch* five years ago and worked several part-time jobs to support the family and help two of his sons, **Nathaniel Bean '10** and **Lucas Bean '13**, attend Otterbein. Douglas currently works two full-time jobs and does additional freelance writing, while still finding time to spend with his family.

"I knew immediately I had to write about my dad, as he has been the inspiration of my experience at

Otterbein," Emmanuela said. "Whenever I'm struggling with a class or a homework assignment, I think about how hard my dad has to work every day just to make ends meet ... and that makes me want to work even harder, as he has sacrificed so much for me to go to college."

Douglas truly stands for all the values of a member of Otterbein's Model Community.

**Lisa Minken '03** is the marketing manager for Broadway in Columbus.

**Jeff Fouch '04** and **Christeen Stridsberg '06** performed with The Columbus Moving Company at the Garden Theatre, Columbus, in August. *An Object in Motion* combines elements of modern dance and dance theater and includes six dances.

**Aleisha Morris Radford '04** was promoted to analyst under asset management at JP Morgan Chase in Columbus. She is responsible for software implementation.

**Tracy Shroyer '04** has started her own business in Columbus, Beyond the Stone Wall LLC,

which provides individual development coaching and small business consulting. She held the first Knowledgeable Network of Women (KNOW) leadership event in October.

**Erica Hlavin Bell '05** is a clinical assistant professor at The Ohio State University Wexner Medical Center.

**Sarah Bedison Brandstetter '05** represented Otterbein at the Waynesburg University presidential inauguration, March 25.

**Caleb Damschroder '05** appeared on the 68th Annual Tony Awards Show as part of the *Cabaret* ensemble in June.

**Thomas Feusse MBA '05** received the Community Partnership Award at Ohio Cancer Research Associates' 23rd Star Award Gala held in Columbus in June.

**Matthew Kola '05** is a chiropractor and operates Kola Chiropractic and Nutritional Wellness in Delaware, OH.

**Ashika Nanayakkara-Bind '05** is an analytical chemist at Integra Life Sciences, a worldwide medical technology company.

**Tyler TerMeer '05** accepted the position of executive director of Cascade AIDS Project in Portland, OR, in June.

**Kyle Walton '05** was named head coach of volleyball at Transylvania University in Lexington, KY, in May.

**Michael Cauley '06** is the channel partnership manager at 2Checkout, Columbus, a worldwide leader in payment services for online sales.

**David Hard '06** is a trust examination specialist with the Federal Deposit Insurance Corporation (FDIC) in their New York regional office. He is responsible for the supervision of 99 trust departments in 11 states with \$2.2 trillion in assets under management.



## Elizabeth Saltzgiver '99

## Director of Audience Services Stands with Otterbein

When **Elizabeth Saltzgiver '99** was faced with an illness that challenged her ability to continue her studies at Otterbein, she discovered that Otterbein stood ready to face this challenge with her.

"I'll never forget how nervous I was as I prepared for my sophomore conference to discuss my future in the music program," remembered Saltzgiver. "I thought I needed to be ready to defend myself. Instead, every faculty member in that room cared about my health and each wanted to know what they could do to help me work through this challenge."

As a 20-year-old, Saltzgiver said that kind of genuine care and investment was monumental, and was her first understanding of what Otterbein really stood for.

Now, as the director of audience services in Otterbein's Department of Theatre and Dance, Saltzgiver offers the same support that Otterbein showed her to students and patrons alike.

"I am a part of a very talented team of individuals that coach, nurture and lead our students, who come from all over the country and have many stories to tell in the artistic and business professions of the theatre industry," she said. "And when those students graduate, we celebrate their successes together knowing that each of us played a role in getting them to their next chapters and knowing that Otterbein is now a part of their stories."



Since 2000, Saltzgiver has been supporting theatre patrons and keeping them involved in the Otterbein experience.

"I truly care about our patrons. We know our subscribers, we value their loyalty and we make sure they know that, too," she said. "Their opinions and support matter to all of us and that's why we connect them with meaningful opportunities to support our programs."

And just as the opinions of her patrons matter, Saltzgiver said that she has long valued that her opinions matter at Otterbein, too.

"My title has never limited me from sharing my opinion or an insight," she said. "If I have an idea, I know I can share it. It might not come to fruition, but I know my input and suggestions are always welcome."

Outside of Otterbein, Saltzgiver is currently a member of the board of trustees for the Westerville Visitors and Convention Bureau. She also completed the highly competitive Next Generation of Leaders in the Arts Fellowship Program in 2012, served as the chairwoman for the Westerville Rhythm and Arts event and the Otterbein liaison for the Westerville Parks & Recreation Community Theatre production of *The Wizard of Oz* in 2013, and was a past board member of the Westerville SERTOMA Club.

Saltzgiver is married to **James Saltzgiver '99**, and together they have two daughters, Audrey and Madeline.

**Jonathon Huber '06** earned his designation as an Associate of the Society of Actuaries in May 2014 and became a member of the American Academy of Actuaries. He is employed by Nationwide Insurance specialty insurance segment as a reserving actuary.

**Susan Campbell Kola '06** works at the Gund Gallery at Kenyon College in Gambier, OH.

**Judy Stinolis '06** won an Emmy in the Societal Concerns category for a project she did at Ohio

News Network in 2012. The story was about a Lorain, OH, woman imprisoned for 16 years for a crime she did not commit. Stinolis is now a producer/writer at WSYX-TV in Columbus.

**Bradley Vernatter '06** was selected for the 2014 Leadership Intensive Program by Opera America. The program identifies promising, emerging leaders in the opera administration fields and provides them with support to advance their careers. He is currently the director of

production for Boston Lyric Opera.

**Sarah Brehm Linkhart '07 MSN '14** is a nurse practitioner at Ortho Neuro in Columbus.

**Jennifer Smith '07** is a claims adjudicator at Opportunities for Ohioans with Disabilities in Columbus.

**Andrew Chrismer '08** is the assistant director of the global business and economics program at the Atlantic Council, Washington, D.C. He is currently

working on the Transatlantic Finance Initiative's "Danger of Divergence" series, partnering with Thomson Reuters and TheCityUK, a financial and professional lobbying group. He earned his master's degree from American University's School of International Service in 2012.

**Ursula Guggisberg Bennett '09** is marketing director for her family's business, Guggisberg Cheese, located in Holmes County, OH. The company was featured in the Spring 2014 issue of *Ohio's Amish Country*.

**Kathleen Lyons Cauley '09**

is a senior coordinator of web content at Nationwide Insurance, Columbus.

**Andrew Fries '09**

is assistant football coach/recruiting coordinator at Wilmington College, OH.

**Amanda Lee McFarland '09**

is a public information officer with the Ohio Department of Transportation District 12, Garfield Heights, OH.

**Ashley Shier '09**

earned her doctorate degree in psychology from the University of Cincinnati in August. She is a post-doctoral fellow at Nationwide Children's Hospital, Autism Center, Westerville.

**Lauren Tibjash '09**

is pursuing a master's degree in strategic communications at American University, Washington, D.C.

**Chelsea Merriman Tobias '09**

is a social work intern at the Cleveland Rape Crisis Center.

**Kyle Arend '10**

is a marketing manager at Slam Dunk Sports Marketing, Middletown, OH.

**Gina Bericchia '10**

is a senior media relations specialist at Nationwide Children's Hospital, Columbus.

**Ashlie Decker '10**

graduated from The Ohio State University College of Pharmacy in May and is now working as a pharmacist at the Western Arizona Regional Medical Center, Bullhead City, AZ.

**Hannah DeMila '10**

is the outreach manager at The Education Abroad Network in their Chicago headquarters.

**Aaron Eckert '10 MAT '11**

teaches American history to freshmen in Bucyrus City Schools, Bucyrus, OH. He is also the head coach for varsity football and the assistant coach for varsity baseball.

**Megan Hartley Ford '10**

is communications programs manager at the American Red Cross, Columbus.

**Micah Harvey '10**

played the role of Shrek in Canton's Players Guild production of *Shrek the Musical*.

**Brian Hiscox '10**

is the director of athletics at Berkshire High School, Burton, OH.

**Sarah Jenney '10**

accepted the position as a senior financial analyst on the specialty pharmaceutical distribution team at Cardinal Health in Nashville, TN. She is responsible for financial reporting and analysis for the multi-specialty and urology distribution teams.

**Zach McGrain '10**

is the assistant director of the Career and Leadership Development Center for the College of Health Sciences and Professions at Ohio University in Athens, OH.

**Anta McKnight Moore MSN '10**

received her doctorate of business administration in health care administration degree from Northcentral University, Prescott Valley, AZ. She earned the 2014 Dissertation of the Year Award for her dissertation, *Experiences of African American Women Declining or Delaying Breast Cancer Surgery: A Phenomenological Study*.

**Molly Morton Clark '10**

is assistant band director at Central Crossing High School, Grove City, OH.

**John Quimby '10**

is director of player development at All American Baseball Center in Pittsburgh.

**Kyle Stull '10**

works for the Victaulic Company, a developer and producer of mechanical pipe joining systems.

**Kelsey Vilanova '10**

is the meeting and event coordinator at SS&G, an accounting firm with offices in Ohio, Illinois and New York.

**Kate Weale '10**

is an employee of Nationwide Children's Hospital contracted to LondonCity Schools, OH, as the high school's head athletic trainer.

**Nick Wood '10**

is associate director of development in athletics at Ohio Dominican University, Columbus.

**Andrew Boose '06**

was awarded a 2014 Environmental/Conservation Award by the Columbus and Franklin County Metro Parks, recognizing an exceptional effort

to acquire, restore, preserve, operate or develop unique or significant conservation and natural areas or programs. Also in the photo at left is **John Watts '86**, resource manager.

**Benjamin Garnett '06**

was promoted to staff sergeant in the U.S. Army Reserve in April. He assumed the role of Operations Non-Commissioned Officer in Charge (NCOIC) for the 100th Army Band. He is in his second year of graduate school at the University of Louisville, pursuing a master's degree in communication.



## Brown Believes in Investing in 'Important Areas' of Life

**Emmanuel "Manny" Brown '09** grew up on the east side of Columbus, graduating from Walnut Ridge High School in the Columbus City School District. He found Otterbein to be exactly what he needed as a young college student—a place where he said "you get into your bubble and come out with a different perspective."

"I learned life is about resiliency," he said. "My experiences and education at Otterbein also helped me to be better able to navigate professionally. It was not just my courses but also the broader experiences I had as a student. Otterbein challenged me to think, to search and to be honest with myself."

Brown now works as an information risk analyst at JPMorgan Chase, where he examines data in search of potential risks to the company's information technology systems.

A self-described "corporate guy," Brown said it blows people's minds when they learn that the data analytics expert majored in sociology at Otterbein. But it makes sense to him. "In data analytics, you're curious and searching for trends the same way you do in sociology."

"I wake up every day and love what I do," he said, adding he never forgets the role Otterbein has played in his success. In fact,



he believes so much in the Otterbein experience that he has been a monthly donor to the University since he was an undergraduate student.

"I believe in supporting Otterbein because it goes back to investing in the areas of your life that are important to you," he said. "Otterbein built me up to be the type of person I am in the larger community and to be a good father. It's always about working to be a better person and making a difference in people's lives. Otterbein has a special place in my heart."

Brown recently served a three-year term on the Alumni Council and talks with students about launching careers. Such acts of service are a habit he developed as an undergraduate when he wore many hats, including chairman of the College Judicial Council, student member of the Otterbein board of trustees, national officer on the board of directors of Alpha Phi Alpha Fraternity, and member of the search committee that recommended the hiring of Otterbein President Kathy Krendl.

Outside the office, Brown has a rich family life. He and his partner, Terrell Stephens, have four sons, Adan, Amir, Dylan and Damian, whom they treasure.

**Karen Castro-Ruiz '11** received a Thomas Pickering Foreign Affairs Graduate Fellowship, sponsored by the Woodrow Wilson Foundation and the Department of State. She will be studying peace and conflict

resolution in the School of International Service at American University, Washington, D.C. She has been working as a district aide and immigration caseworker in U.S. House Representative Joyce Beatty's office for the past year.

**Kylie Hammons '11** is an account manager at Dynamit, Columbus. Dynamit is a data, design and technology company.

**Alice Saindon McCutcheon '11** is pursuing her doctorate in

psychology at the Adler School of Professional Psychology, Chicago.

**Leah Shamblin '11** is the assistant director for the Center for Student Involvement at Otterbein.



**Sheronda Whitner '12** (left) represented her employer, The Ohio Commission on Minority Health, at the Otterbein Health Fair last spring.



**Amanda Zahn '13** (left) and **Jacquelyn Schott '13** visited the Sherlock Holmes Museum in London. They traveled with the Senior Year Experience class during spring break 2014.

**Kelsey Sommers '11** is a multimedia specialist at Delaware General Health District, Delaware, OH. Priorities include disease control through immunizations, decreasing obesity, promoting healthy lifestyles and preventing foodborne illness.

**Danielle Pauley Wagner '11** is an events and sponsorship specialist at OhioHealth, Columbus.

**Amanda Weed '11** is pursuing a doctorate degree at the E.W. Scripps School of Journalism at Ohio University.

**Grace DerMott Smith '12** is creative facility and marketing administrator for Wild Goose Creative, Columbus. Wild Goose promotes art and artists, focusing on hospitality, community, education and creativity.

**Nathan Edick '12** is an assistant basketball coach at the University of Virginia, Wise, VA. He is responsible for scouting, recruiting and working with perimeter players. He spent the last two seasons as a graduate assistant at Virginia Commonwealth University.

**Bryn Sowash '12** has launched a new business, Skitterbug, providing virtual business support for arts professionals and entrepreneurs.

**Emily Burk '13, Kelsey Gorman '13, Chelsey Loschedler '13 and Molly Sullivan '13** performed in *Fresh Cut*, a program of eight dances at the Garden Theatre in Columbus in August. As part of the New Vision Dance Company, the alumnae performed to Bach's *Suite for Solo Cello No. 1 in G Major* choreographed just for them.

**Elizabeth Carr '13** is student activities coordinator at the University of Northwestern Ohio, Lima.

**Joshua Hartley '13** is a communications specialist at OhioHealth, Columbus.

**Lindsey Hobbs '13** is an online marketing strategist for Champion Real Estate Services, Westerville.

**Jean-Claude Ndongo MBA '13** is an investor advisor representative with the Principal Financial Group,

Columbus. He works with both individual clients and businesses to map out their goals and develop strategies to achieve desired results.

**Kelsie Randall '13** was promoted to account coordinator at the creative media firm, Mills James. She is responsible for assisting clients and account managers in the planning and executing of various projects, as well as serving as a liaison between the client and production teams.

**Elyse Brigham '14** is the office manager/executive assistant at Summit County Land Bank in Ohio. The purpose of the land bank is to serve as an agent of the county for reclamation, rehabilitation and reutilization of vacant, abandoned, tax-foreclosed or other real estate property within Summit County.

**Emily Edwards '14** is the experiential logistics coordinator at the Columbus Zoo and Aquarium, Zoombezi Bay, Safari Golf Course and the Wilds.

Her focus is creating a positive experience for guests at events such as JazZoo, The Conservation Cup, Wine for Wildlife and other fundraising and charity events requiring more than a general admission ticket.

**Kahla Johnson '13** can be heard on Sunny 95 (Columbus Radio Group) as an overnight, live, on-air talent. She also continues at Mills James Creative Media in client services.

**Audra Kohler '14** is a marketing specialist at OhioHealth, Columbus.

**Susie Long '14** was chosen to participate in The Columbus Foundation's 2014 Summer Fellowship Program. The program provides college students and recent graduates opportunities to work with central Ohio nonprofits for a 10-week period. She worked with Broad Street Presbyterian Church to facilitate collaborations with local health, welfare and nutritional services and create a plan for in-pantry programming.

The Austin E. Knowlton Foundation continues its generous support of Otterbein through a gift to the Austin E. Knowlton Scholarship for undergraduate students.

Giving  
Note



**Alexandria Pulos '13** is an international sales recruiter for the Greg Norman Champions Golf Academy, North Myrtle Beach, SC. She is responsible for recruiting students through international events around the world, developing recruitment strategies through cross-cultural communication and marketing events. With her work, she has traveled to Thailand, South Africa, Germany, Japan, Mexico and Canada this year.



**Rachael Puthoff '14** was awarded an NCAA postgraduate scholarship for full- or part-time postgraduate study at a university or professional school. She is pursuing a doctorate degree in physical therapy at Ohio University. She also won the Honors Thesis Project of the Year at Otterbein for 2014 and was a student senator representative to the Ohio Athletic Trainers Association.



**Ciera Martin '14** is a marketing specialist with Dayhuff Group, Worthington, OH. Dayhuff offers enterprise content management and business intelligence services.

**Gregory Moomaw '14** is a production supervisor with Ryan Homes.

**Tim Mosher MSN '14** is working with Samaritan's Purse in an Ebola clinic in Liberia.

**Josh Overholser '14** is a news reporter and weekend anchor at WHIZ-TV in Zanesville, OH.

**Harrison Ralph '14** is a camera operator at Time Warner Cable.

**Matt Soppelsa '14** is a client success associate at Glantz Design, Evanston, IL. He assists in general project management.

**Meredith Ulmer '14** is the digital/video communications manager with Delta Gamma Fraternity executive offices in Columbus. •

You can submit your classnotes online at:

**[www.otterbein.edu/classnotes](http://www.otterbein.edu/classnotes)**

Online forms are available to submit new jobs, family additions, awards and all life updates.

## Entertainment Center

**Aaron Ramey '98** is in the ensemble and is the understudy for the part of Robert in *Bridges of Madison County*, beginning a national tour in the fall of 2015. He played the same roles on Broadway through May 2014.



**Lindsay Nicole Chambers '02** is currently performing in the role of Lauren for the National Tour of *Kinky Boots*. She is pictured at left with cast member Steven Booth.

**Jonathan Bennett '03** was cast in season 19 of *Dancing With the Stars*. He was paired with professional dancer, Allison Holker.



**Jeremy Bobb '03** plays the role of Herman Barrow in Steven Soderbergh's Cinemax drama, *The Knick*, which premiered in August and has been picked up for a second season. He also appears in the award-winning Netflix series, *House of Cards*.

**Jen Halen Kaler '07** appeared on HGTV's *House Hunters* on Sept. 10 and the home of **Sam Ross '04** was featured on July 2.



**Jake Robinson '12** appears in the new NBC show, *Odyssey*, an action drama of international conspiracy.



**Cory Michael Smith '09** plays The Riddler in the new television show, *Gotham*, which premiered in September on Fox. He also appears in the HBO mini-series, *Olive Kitteridge*, which premiered Nov. 2, and the movie, *Camp X-Ray*, which was released Oct. 17.



# A 100th Birthday for Howard House

*In an historical district called Temperance Row, Howard House (131 W. Park St.) was built 100 years ago by Purley Baker, general superintendent of the Anti-Saloon League of America. After several years of private ownership, the house was purchased by Otterbein to be used as a presidential residence. In 1947, President J. Gordon Howard (1945-1957) moved into the house that would later be named for him. President Lynn Turner (1958-1971) was the last president to live there. Currently, Howard House is home to Alumni Relations and Advancement Services. We asked President Turner's son, Bruce, if he would share some memories of the old house.*

by **Bruce Turner '67**

In August 1958, my parents and I moved into 131 W. Park St. My father was starting his tenure as president of Otterbein College, and I was an obnoxious 12-year-old starting seventh grade far away from my friends.

With three stories and a basement, the house we moved into seemed huge! The first floor consisted of a formal dining room, kitchen and parlor. Although it was used mainly for college social events, the parlor was also our music room, where my mother played piano, my father played violin and I played cello. A screened-in front porch looked out on Cowan Hall. From there, we could hear the carillon from Towers Hall.



A young Bruce Turner proudly stands with father, President Turner, and mother, Vera.



Three bedrooms comprised much of the second floor. A number of guests stayed with us during my father's tenure, including Congressman Walter Judd, historian Bruce Catton and singer Marian Anderson. A secret compartment under the hardwood floor upstairs was just big enough to hide a bottle of liquor. My father thought that was strange in a house where the superintendent of the Anti-Saloon League had lived.

The third floor was a big open area which contained a double bed for family when they visited and my desk. I spent a lot of time up there during high school years. There were also several cedar lined closets which smelled wonderful.

The basement included a room where one or two male college students could stay. They received reduced housing rates in return for working around the house and yard. My freshman roommate, **Ward Hines '68**, and I stayed there our sophomore year. Our neighbors included Dr. Lyle Michael and his wife, Gladys. One of my first paying jobs was mowing his lawn. He and Dr. Tom Kerr were instrumental in my decision to go to graduate school.

My father retired in May 1971. I visited in July 2014, and interrupted a staff meeting taking place on the front porch. Heidi Tracy, vice president of Institutional Advancement, very graciously spent the next several hours showing me around Howard House and campus. The house is arranged differently now, but it certainly stirred many fond memories.

For the full version of this story, go to:  
[www.otterbein.edu/howardhouse](http://www.otterbein.edu/howardhouse)





compiled by Becky Hill May '78

## Marriages

**Andrea Steva Callender '91** to Alex Garcia, June 7, 2014.

**Kim Patch '03** to Andrew Sharp, Sept. 21, 2012.

**Misty Spring '03** to Josh Heffernan, July 11, 2014.

**Gregory Durant '05** to Hector Costales, April 11, 2014. Attending were **Caleb Damschroder '05**, **Jennifer Lust '05**, **Jeremy Davis '05** and **Tessa Wehrman Jordan '06**.

**Genevieve Mulroy '05** to Robert Adkins, April 13, 2014, at the Hemingway House in Key West, in a dress made by her aunt, **Nancy Leonhardt Green '58**. **Erica Patton Rey '05** and **Trevor Rey '06** attended.

**Susan Campbell '06** to **Matthew Kola '05**, Sept. 14, 2013. The maid of honor, sister of the bride, was **Stacy Campbell '02**. **Matthew Singell '05** provided the music.

**Callie Firman '06** to Mike Houts, Sept. 6, 2013. The wedding party included



**Andrea Steva Callender '91** with groom, Alex Garcia



**Kim Patch '03** with groom, Andrew Sharp



Hector Costales with partner, **Gregory Durant '05**



**Robert Adkins** with bride, **Genevieve Mulroy '05**



**Susan Campbell '06** with groom, **Matthew Kola '05**



**Callie Firman '06** with groom, Mike Houts

**Sarah Scalley '06**, **Holly Fenner Ritter '06**, **Mary Krulia Somyak '07** and **Kyle Durban '06**.

**Jeffrey Hess '06** to Shivon Rockward, March 15, 2014.

**Kacy Walton '06** to Matthew Bielozer, Aug. 3, 2013. The bridal party included **Colleen Shaver Holton '06**.

**Mary Sue Krulia '07** to Andrew Somyak, April 26, 2014. The wedding party

included **Tim Krulia '03**, **Callie Firman Houts '06** and **Holly Walliser Park MAE '10**.

**Valerie Vining '07** to Todd McClure, Nov. 29, 2013. The wedding party included Kappa Phi Omega sisters, **Ericka Graves Payne '06**, **Kathy Rainsburg '05**, **Andrea Ribot Ulbrich '07**, **Erica Riblet '07** and **Meryl Scarton '07**.

**Janelle Garver '08** to **Evan Tackett '10**, Sept. 28, 2013. The

wedding party included **Colleen Walker '07**, **Courtney Wagner '08**, **Sarah Moore Schuette '08**, **Molly Elder '08**, **Ashley Tackett '07**, **Cole Hague '10**, **Jeremy Smith '08**, **Jason Wagner '10**, **Amy Chaffin Weimer '09**, **Natalie Clark '09** and **Maureen Strobel Vaughey '08**.

**Whitney Prose '09** to Robert Bruno, June 7, 2014.



Shivon Rockward with groom, **Jeffrey Hess '06**



Matthew Bielozer with bride, **Kacy Walton '06**



**Mary Sue Krulia '07** with groom, **Andrew Somyak**



Bride **Valerie Vining '07** (second from right), with Kappa Phi Omega sisters, **Ericka Graves Payne '06**, **Kathy Rainsburg '05**, **Andrea Ribot Ulbrich '07**, **Erica Riblet '07** and **Meryl Scarton '07**.



**Janelle Garver '08** with groom, **Evan Tackett '10**



**Cindy Hastings**; **Alex Chen** with mother, **Elizabeth Hastings Chen '08**; **Whitney Prose '09** with groom, **Robert Bruno**; maid of honor, **Angela Hendershot '08**; **Kyra Smith '09** with fiancé, **Steven Bryan**.



**Marinda Roderick '10** with groom, **Andy Fries '09**



**Danica Delois Olson '12** with groom, **Richard Walter**



**Anne Kemmerer '13** with groom, **Luke Boucher '12**

**Marinda Roderick '10** to **Andy Fries '09**, May 10, 2014. The wedding party included best man, **Jamie Albert '09**; groomsmen, **BJ Wanninger '09**, **Charlie Rowley '09**, **Elisha Leiker '09**, **Matt Syx '09**; bridesmaids, **Justine Jones Albert '10**, **Leah Yoder Bailey '10** and **Sarah Kelly Denen '10**.

**Karli Volkmer '10** to **Zach McGrain '10**, July 2014.

**Danica Delois Olson '12** to **Richard Walter**, May 11, 2013. Maid of honor was **Andrea Keil '12**.

**Anne Kemmerer '13** to **Luke Boucher '12**, Oct. 15, 2011.

#### Additions

**Janet Sarrazine Boivin '96** and husband, **Scott**, a son, **Caleb Cameron**.

**Heather Holtkamp Deaton '96** and husband, **Stephen**, a son, **Saber Ross**.

**Kristin Swenberg Gary '96** and husband, **Robert**, a daughter, **Eliza Sue**.

Send your wedding and baby photos with accompanying information by email to:

**classnotes@otterbein.edu**

or go to: **www.otterbein.edu/classnotes**

Photos should be medium to high resolution (at least 800 pixels on the shortest side) and clearly in focus. We reserve the right to refuse any photo which does not meet minimum quality requirements.

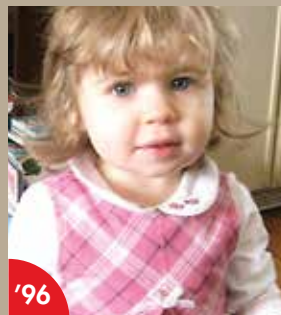




Caleb Cameron Boivin



Saber Ross Deaton



Eliza Sue Gary



Dean Anthony Saunders



Amelia Lois Tracewell  
with big sister, Evelyn



Camden Wideman



Maxwell Michael Bolin



Piper Olive Hartley with  
big sister, Wynnie



Aubree Summer Weeks



Reed Lawrence Yonyon



Cameron Paul Grayem



Harper Marie Milam



Graham Jason Kessler



Jaqueline Clare Davis



Warner Yeh



Avi David Ailer



Genevieve Rose Downs



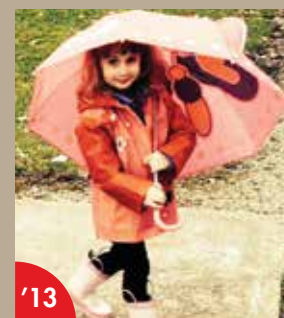
Leah Elizabeth Miller



Lila Ann George



Hannah Horvath



Reagan Boucher

**Jennifer Neiman Smith '97** and husband, **Paul '98**, a son, Oliver Edward.

**Joe Laureano '98** and wife, Dana, a son, Oliver Grey. He joins brother, Jude.

**Stevie Bell Saunders '98** and husband, Tedd, a son, Dean Anthony. He joins big brother, Ryan Ely.

**Katie Thompson Tracewell '00** and husband, Andy, a daughter, Amelia Lois. She joins big sister, Evelyn, 4.

**Amy Mussett Wideman '00**, and husband, Matt, a son, Camden. He is welcomed by big brother, Bryant.

**Jessica Cochran Bolin '01** and husband, Jason, a son, Maxwell Michael.

**Jill Ceneskie Hartley '01** and husband, Andrew, a daughter, Piper Olive. She is welcomed by big sister, Wynn timer, 2.

**Danielle Miller Weeks '01** and husband, Chad, a daughter, Aubree Summer.

**Kristy Yahl Yonyon '04** and husband, Russ, a son, Reed Lawrence.

**Marissa White Grayem '05** and husband, Paul, a son, Cameron Paul. He joins big brother Mason, 3.

**Chantil Stull Milam '05** and husband, **Justin '05**, a daughter, Harper Marie.

**Jennifer Arthur Kessler '06**, and husband, **Jason '02**, a son, Graham Jason. Proud grandparents are **Tony Arthur '03** and Robin Arthur, Otterbein staff member; proud aunt is **Courtney Arthur '16**.

**Alison Schmidt Davis '06** and husband, **Paul '06**, a daughter, Jacqueline Clare.

**Lindsay Warner Yeh '06** and husband, Dave, a son, Warner.

**Noga Granite Ailer '07** and husband, **Alex Ailer '10**, a son, Avi David.

**Natalie Emptage Downs '07** and husband, Trevor, a daughter, Genevieve Rose.

**Amy Feller George '07** and husband, **Jason '08**, a daughter, Lila Ann.

**Karen Beer Horvath '07** and husband, **Andrew '07**, a daughter, Hannah.

**Amanda Durbin Miller '07**, and husband, **Nick '06**, a daughter, Leah Elizabeth. She joins big brother, Landon. Proud grandmother is **Vicki Swingle Miller '06** and aunt, **Autumn Durbin '11**.

**Anne Kemmerer Boucher '13** and husband, **Luke '12**, a daughter, Reagan.

#### Deaths

**Doris Norris Sykes '39** died March 22, 2013.

**Warren Ernsberger '43** died Sept. 5, 2014. He was a veteran

of the U.S. Air Force, serving as a captain on detached duty with the RAF, the Army occupation in Germany and in the Reserve Officer's Corp from 1942-1952. He was sales manager for Benn-Blinn/White Advertising Company for 30 years, former owner of Ernsberger Florist and former co-owner of William's Grill and Ernsberger Builders. He was a member of Sigma Delta Phi, O Club and the Leather Helmet Gang. He was preceded in death by his father, **Roland Ernsberger '1917**; brothers, **Ralph Ernsberger '39** and **Paul Ernsberger '44**; and brother-in-law, **Richard Orndorff '48**. He is survived by his wife of 71 years, **Patricia Orndorff Ernsberger '43**; one daughter; two grandchildren, including **Christopher Williams '02**; two great-grandsons; nephew, **Richard Orndorff '65** and sister-in-law, **Meriam Haffey Ernsberger '45**.

**Leora Ludwick Shauck '43** died July 11, 2014. She was preceded in death by her husband, **Ralph Shauck '42**; son, **Stephen Shauck '70**; sister and brother-in-law, **Helen Ludwick Lawther '36** and **Dean Lawther '34**. She is survived by one son, six grandchildren, 17 great-grandchildren and niece, **Ann Lawther Marquart '67**.

**Helen Schwinn Prost '45** died May 26, 2014. She was a member of the Women's Auxiliary Army Corps during World War II where she served as a photographer in a highly classified position.

She was preceded in death by her husband, Howard. She is survived by one daughter, two granddaughters and one great-grandson.

**Josephine Case Thomas '46** died December 13, 2013. She taught home economics for 25 years in the Middletown and Monroe High Schools in Ohio. She was a member of Tau Epsilon Mu. She was preceded in death by sister-in-law, **Mary Cassel Case '47**. She was survived by her husband of 63 years, **Victor Thomas '48**, who has since died; three children; six grandchildren; brothers **William Case '49** and **Ed Case '63**, sister-in-law, **Diana Darling Case '64**; nephew, **Charles Case '75** and niece, **Nancy Case Struble '79**.

**Evelyn Cliffe Kassab '47** died July 10, 2014. She worked at the Rockefeller Institute for Medical Research in New York City doing work on tuberculosis. She also assisted her husband in his dental practice. She was preceded in death by her husband of 61 years, Wadea, and one granddaughter. She is survived by five children, 11 grandchildren and four great-grandchildren.

**Mary McConnell Miller '47** died Aug. 5, 2014. She taught in the Howard and Danville School systems in Ohio for more than 25 years. She was preceded in death by her sister, **Elizabeth McConnell Wolfe '46**. She is survived by three daughters, **Diane Miller Ready '73** and her husband, **Robert Ready '74**; Charlene Miller Schnarr and



her husband, **Steven Schnarr '76**; and **Tamra Miller Proper '78**; 10 grandchildren and 10 great-grandchildren.

**Betty Strait Griffith '48** died March 5, 2014. She was a retired registered nurse for Centerburg Local Schools, OH. She also assisted her husband in the operation of the Red and White Grocery Store and the Sohio Service Station in Sparta, OH. She was preceded in death by her husband of 64 years, Walter, and one grandchild. She is survived by six children, 13 grandchildren and 11 great-grandchildren.

**Mary Young Joiner '48** died November 10, 2012. She served as a secretary in the U.S. Navy in Hawaii during World War II. She was a school librarian in the Santa Cruz City Schools and in Aptos, CA. She is survived by her husband of 63 years, **William Joiner '51**; three children and two grandchildren.

**Wendell King '48** died Aug. 2, 2014. He was a veteran of the U.S. Army where he served as a medic during World War II. He was a pediatrician and founding member of the Children's Medical Group, Akron, OH. He is survived by his wife, **Miriam Woodford King '47**; three children, including son, **Daniel King '75**; five grandchildren and one great-granddaughter.

**Lloyd Savage '48** died May 10, 2014. He was a veteran of the U.S. Army serving during World War II in Alaska's Aleutian Peninsula as well as a

paratrooper in the occupation of Berlin. He was a music educator in various schools before becoming the music supervisor for Chillicothe City Schools.

Following his retirement in 1978, he conducted Welsh hymn sings and co-edited two song books. He is survived by his wife of 65 years, **Norma Kreischer Savage '49**; daughter and son-in-law, **Diane Savage Witt '72** and **E. Keith Witt Jr. '72**; three grandchildren, including **Christine Witt Hoffman '00**, **Laura Witt Harvey '03** and her husband, **Mark Harvey '03**; two great-grandchildren and nephew, **Mark Savage '71**.

**Victor Thomas '48** died Jan. 30, 2014. He was a veteran of the U.S. Army, serving during World War II. He retired from Miami University where he worked in employee relations for 20 years. He was a member of Zeta Phi. He was preceded in death by his wife of 63 years, **Josephine Case Thomas '46**, and sister-in-law, **Mary Cassel Case '47**. He is survived by three children; six grandchildren; brother-in-law, **Ed Case '63**, and his wife, **Diana Darling Case '64**; brother-in-law, **William Case '49**; nephew, **Charles Case '75** and niece, **Nancy Case Struble '79**.

**Guy Bishop '49** died May 11, 2014. He was a veteran of the Korean conflict, 1950-1952, where he worked primarily as a public information officer. He was a teacher and principal in the Vandalia Butler School System, Vandalia, OH, retiring after 30 years of service in 1979.

He was a piano entertainer and a feature at Paddy's Restaurant and Lounge in Tipp City, OH, for 15 years. He is survived by his wife, JoAnn, and two children.

**Richard Fuller '49** died March 23, 2014. He was a veteran of the U.S. Army Air Corps, serving during World War II. He taught in Claridon and Marengo Local Schools in Ohio, then served as superintendent of Marengo Local Schools, before switching his focus to the financial issues facing school districts. He served in that capacity in several districts in Ohio, Michigan and Washington. He is survived by his wife, Polly; four children; 13 grandchildren and 18 great-grandchildren.

**Byron Prushing '49** died April 10, 2014. He was a veteran of the U.S. Army serving as a medic during World War II. He was employed by Gahanna Lincoln High School, Gahanna, OH, as teacher, coach and athletic director. He was a founding father of the Ohio Capital Athletic Conference. He is survived by his wife of 65 years, Elizabeth; three children; one granddaughter and brother **Dean Prushing '61**.

**Jim Buck '50** died Aug. 9, 2014. He was a veteran of the U.S. Navy serving as quartermaster on the LST 888 until the end of World War II. After Otterbein, he began a career in sales. He is survived by two children and two grandchildren.

**Dorothy Deane Schmidt '50** died July 28, 2014. She was a retired music educator with the Savannah-Chatham County Public Schools, Savannah, GA; Highland County Schools, Sparta, OH; Jonathan Alder Schools, Plain City, OH, and Otterbein. She is survived by four children, seven grandchildren and two great-grandchildren.

**Richard Bailey '51** died June 6, 2014. He served as a pastor in the United Methodist Church from 1954-1966, then as a professor of speech communication at the University of Rhode Island from 1967-1995. In 2013, he published a self-help book, *Understanding Self and Others in the Postmodern World*. He is survived by two children and three grandsons.

**Bob Hensel '51** died Feb. 19, 2013. He was a veteran of the U.S. Army serving during World War II in the occupation of Japan. He taught high school math and science at Theodore Roosevelt High School, Kent, OH, but spent the majority of his career at Chagrin Falls High School, OH, teaching physics and chemistry and coaching the golf team. He was a member of Zeta Phi. He is survived by his wife of 58 years, Kay; three children; three grandchildren and brother, **Harold Hensel '54**.

**Richard McKinniss '51** died Oct. 19, 2012. He was preceded in death by a daughter, **Deborah McKinnis Stedman '73**. He is survived by his wife of 62 years, Louise;

son, **Richard McKinniss '75**; son-in-law, **Lindsay Stedman '73**; six grandchildren and seven great-grandchildren.

**Jane Nelson Penrod '51** died June 18, 2012. She worked at the voting polls in Salem, OH, for 25 years and had worked for both Lease Drug and McCulloch's Department Store. She was preceded in death by her husband, **Robert Penrod '53**. She is survived by two children, one grandchild and two great-grandchildren.

**James Shumar '52** died Dec. 21, 2012. He is survived by his wife, **Barbara Pottenger Shumar '52** and one daughter.

**Helen Brown Cash '53** died Oct. 4, 2013. She worked as a medical lab technician at St. Elizabeth Hospital, Dayton, OH, for many years. She is survived by her husband of 57 years, Lewis; four children; 12 grandchildren and 10 great-grandchildren.

**Larry Hard '53** died April 11, 2014. He was ordained a pastor in the United Methodist Church and served churches in Edon, Lancaster, Lima, Westerville and Kettering, OH, until his retirement in 1998. He was preceded in death by his first wife, Betty. He is survived by his wife, **Alice Carlson Hard '53**; three children; seven grandchildren and one great-grandson.

**Clara Stiles Reeves '53** died Feb. 3, 2014.

**Erma Boehm Sorrell '53** died July 24, 2014. She was

an elementary teacher and longtime volunteer at Riverside Methodist Hospital, Columbus. She was preceded in death by her husband, Wilmer. She is survived by two sons, six grandchildren and three great-grandchildren.

**Maxine Beers Gebbie '54** died Dec. 29, 2013. She was a supporter of Harambee Ministries and volunteered at Huntington Memorial Hospital, Pasadena, CA. She is survived by two children and four grandchildren.

**Richard Sauerman '54** died March 20, 2014. He was an employee of Dayton Power and Light, Dayton, OH; Westinghouse, Columbus; and retired from Electric Equipment Company in 1996. He was a member of Zeta Phi, the football, baseball and golf teams while at Otterbein. He is survived by his wife of 59 years, Phyllis; two children and five grandsons.

**Roger Dybvig '55** died March 25, 2014. He is survived by three children.

**James Howes Jr. '56** died March 1, 2013.

**J. Robert Shepherd '56** died Sept. 4, 2012.

**Joyce Thomas Bentley '57** died March 3, 2014. She was a retired teacher and librarian and volunteered with the Friends of the Tippecanoe Public Library in Lafayette, IN. She was preceded in death by 13 siblings. She is survived by one sister.

**Leland Newell '57** died July 7, 2014. He was a veteran of the U.S. Air Force where he served as a flight surgeon. He became an ob/gyn specialist and practiced in West Palm Beach, FL, for 32 years. He was preceded in death by his mother, **P. A. Newell '29**; and relatives, **Thomas Newell '23** and **Leonard Newell '24**. He is survived by his wife of 51 years, Nita; four children; 11 grandchildren; sister, **Jane Newell Cochran '61** and relative, **Louise Foster '79**.

**Carolyn Cribbs Smith '57** died April 24, 2014. She taught music and kindergarten until her retirement in 1993. She was a member of the Dayton Otterbein Women's Club and Sigma Alpha Tau. She is survived by her husband of 57 years, **Harvey Smith '55**; two children and three grandchildren.

**Jennie Sprague Bell '58** died May 19, 2014. She worked as a forensic technician for the Phoenix, AZ, police department. She was preceded in death by one son. She is survived by two daughters, three step-children, four grandchildren and two great-grandchildren.

**William Goodwin '60** died Sept. 9, 2014. He was a veteran of the U.S. Air Force serving during the Korean conflict, 1950-1954. After Otterbein, he worked at Nationwide Mutual Insurance Co., where he became director of national advertising. He retired in 1991 after 30 years of service. He is survived by two children and two grandchildren.

**Raymond Piper '60** died April 5, 2013. He was a United Methodist minister, serving churches in western PA. He is survived by his wife, Marjorie; three sons; nine grandchildren and two great-grandchildren.

**Roger Brant '61** died April 30, 2014. He was a veteran of the U.S. Air Force where he received training as a pilot and for the Manned Orbiting Lab Space Program. He worked for NASA and was on the console for the first manned space shot. He was also co-owner/operator of Brant Coal Company and JIRO Enterprises. He was a member of Lambda Gamma Epsilon. He is survived by his wife of 51 years, **Nerita Darling Brant '61**; three children; one grandson; and sister-in-law and brother-in-law, **Diana Darling Case '64** and her husband, **Ed Case '63**.

**Fred Ciminello '61** died April 4, 2014. He was a teacher at Newark High School teaching Spanish, government and economics. He was coach of the swimming and baseball teams and a member of the Land of Legend Barbershop Chorus. He was preceded in death by his wife, **Kay Dornan Ciminello '59**; and his brother, **Robert Ciminello '53**. He is survived by two sons and two grandchildren.

**Dale Sauer '62** died Aug. 28, 2014. He was a pastor, counselor and marriage and family therapist. He is survived by his wife, Phyllis; five children; six grandchildren and two step-children.



**Mary Blair Fields '65** died Feb. 20, 2013. She retired from Ursinus College, Collegeville, PA, where she was a biology professor for 33 years. She is survived by her husband, **Albert Fields '65** and two children.

**Ellen Wagner Mork '65** died March 16, 2014. She was a past president of the League of Women Voters and an advocate for many community causes. She was preceded in death by her husband, David. She is survived by two sons and a grandchild.

**Shirley Williams Chamberlain '67** died Aug. 18, 2014. She worked for many years as a real estate broker in the Boothbay Harbor, ME, area and led tours along the Canadian Maritime and Maine Coast, as well as in major cities in the U.S. and Europe. She is survived by her brother, **J. Mills Williams '65**.

**Wayne Johnson '68** died Sept. 26, 2013. He was a veteran of the Air Force and worked in education for 40 years, holding positions as teacher, principal and superintendent in various districts in New York. He taught education administration at Texas Christian University and was most recently adjunct professor in the education department at The College of St. Rose, Albany, NY. He was preceded in death by his mother, **Virginia Hathaway Johnson '45**. He is survived by his wife, Sharon; three children and four grandchildren.

**Lou Turner Lorton '68** died Nov. 22, 2012. She worked as a dietetic technician at the University of

Washington Medical Center and at New Horizons Retirement Communities in the Seattle area. She is survived by her husband, **Steven Lorton '68** and one son.

**Mary Kerr Sterling '68** died Jan. 21, 2014. She was a microbiologist at LabCorp in Dublin, OH, at the time of her death. She is survived by one daughter and three grandchildren.

**Cheryl Claus '70** died Feb. 24, 2014. She is survived by three siblings.

**Joanne Redman Leiendecker '70** died Aug. 3, 2014. She retired from Columbus City Schools after 28 years of service. She is survived by her husband of 61 years, Jack; three children and five grandchildren.

**Jay Lavender '71** died Jan. 30, 2013. He was an attorney for 28 years with Lavender & Bauer PC, Warsaw, IN, and taught criminal law at Grace College, Winona Lake, IN, from 1983 until his passing. He was a member of Sigma Delta Phi, the baseball and basketball teams while at Otterbein. He was preceded in death by brother-in-law, **William Wilson '71**. He is survived by his wife, Joy; two children; one grandson; sisters, **Claire Lavender Conley '69** and **Jackie Lavender Wilson Landis '73**.

**Dale Miller '71** died March 30, 2014. He was a veteran of the Army Reserves, where he served for six years. He was co-owner of O.D. Miller Electric Company, Louisville, OH. He was a member of Eta Phi Mu and Campus

Crusade for Christ while at Otterbein. He is survived by his wife, **Linda Wilkins Miller '71** and two children.

**William Gabriele '72** died Aug. 8, 2014. He was the owner of Gabriele Insurance Agency in Lebanon, OH, for 39 years. He is survived by two children.

**Donald Manly III '72** died June 15, 2014. He was a veteran of the U.S. Coast Guard, where he served for six years. He taught in Westerville City Schools for 35 years at the middle school level. He was a four-year starter on the Otterbein basketball team and served several years as an assistant coach at Otterbein. He is survived by his wife of 40 years, **Catherine Fisher Manly '73**; two sons, including **Jason Manly '05**; four grandchildren and relative, **Janet Sibert Cseak '68**.

**David Demojzes '73** died Aug. 3, 2013.

**Loraine Jarrett Potter '74** died July 10, 2014. She was a teacher for more than 40 years, teaching in Columbus Public Schools; West Palm Beach, FL; and with Upward Bound at Denison University. She was preceded in death by her husband, Oscar, and five siblings.

**Terry Eldridge '76** died Feb. 18, 2014. He taught music in the Oxford Hills School Administrative District 74, Carrabec and Rumford School Systems in Maine, and was active in several ensembles statewide. He is survived by his wife, Becky, and one daughter.

**Dana Curry Wilson '77** died July 11, 2014. She was an office manager at Jack Maxton Chevrolet, Columbus, for 43 years. She was preceded in death by her husband, Dennis. She is survived by two children and one granddaughter.

**Joe Bringardner '78** died June 27, 2014. He was a retired math teacher and football coach at West Jefferson, Upper Arlington, Hilliard, Whetstone and Buckeye Valley High Schools in Ohio. He is survived by two children.

**Raymond Belt '79** died Aug. 29, 2014. He was a veteran of the U.S. Air Force and retired after 20 years service at NORAD in Colorado Springs, CO. His second career was as an accountant at Riverside Methodist Hospital, Columbus. He is survived by his wife of 58 years, **JoAnne Butler Belt '57**; three children; six grandchildren and five great-grandchildren.

**Vivian Hawkins Hill '81** died July 19, 2014. She was a substitute secondary school teacher for Big Walnut Schools, OH, and foster mother to at least 50 children. She is survived by her husband of 60 years, Clifford; three children, including **Valerie McGraw '03**; nine grandchildren; two great-grandchildren and one great-great-grandchild.

**Scott Smart '82** died May 11, 2014. Founder and owner of Smart Business Systems, he discovered a love of teaching in 2000 and taught math at Worthington Christian Middle

# Planned Giving Honors Mother's Love of Otterbein

**Miriam Fetzer Angerer '84** says her late mother, **Rachel Walter Fetzer '48**, gave her many gifts in life, including a love for Otterbein that began when Miriam was just a little girl.



**Rachel Walter Fetzer '48**

That was when the Fetzers started making an annual trek from their home near Wooster, OH, to Homecoming Weekend at Otterbein. Miriam later attended band camps here and decided her mother's alma mater would be the perfect fit for her, too.

Like her mother, Miriam played in the Otterbein band and was a member of Kappa Phi Omega sorority. She majored in accounting and business administration before embarking on a career in finance at Limited Brands Inc. in Columbus. It's a career choice whose roots can be traced to her mother's work as a business teacher at a high school in Wayne County.

"I was an Otterbein legacy," Miriam fondly recalls. "I followed in my mother's footsteps not because I had to but because I was drawn toward the same activities."

When her mom died in 2009, Miriam decided that planned giving was the best way to honor her mother's life and her love for Otterbein. She is making an annual gift to fund the **Rachel Walter Fetzer '48 Scholarship**. In addition, Miriam has designated the proceeds of a life insurance policy to fund the **Rachel Walter Fetzer '48 and Miriam Fetzer Angerer '84 Scholarship** upon her passing.

Income from the funds will be used to provide a scholarship for a student who is an education or business major with preference given to band members.

"My mother was very thankful for the education she received and totally enjoyed all the friendships she made here," Miriam says. "She loved Otterbein, and this gift is a way for me to honor that."



**Miriam Fetzer Angerer '84**

To learn more about Planned Giving options, contact Candace Brady, 614-823-1953, [cbrady@otterbein.edu](mailto:cbrady@otterbein.edu).



School, OH, for the past 14 years. He is survived by his wife, Dione, and one daughter.

**LaDonna Brevard Yaussy '82** died June 14, 2014. She was employed at the Charleston Montessori School, Charleston, WV, as a music teacher and as a reading instructor with the Appalachian Reading Center. She is survived by her husband of 31 years, **David Yaussy '81**; three sons and one grandson.

**Bradley Eldridge '95** died Sept. 9, 2014. He was a resident manager at Creative Living in Columbus and a lay counselor with the Vineyard church. He was a member of Pi Kappa Phi. He is survived by his parents, Becky and Denny, and three brothers.

**Jennifer Guzzo '97** died May 29, 2014. She worked as a collection representative for Rossman PCB, Columbus. She is survived by her parents and one brother.

**Robert Maibach '00** died March 20, 2014. He was a veteran of the U.S. Army, serving during the Vietnam War, 1967-1973. He was a health care analyst for Molina Health Care, Columbus. He is survived by his wife of 12 years, Micki; two children; two step-children; four grandchildren and five step-grandchildren.

**Julianne Bonges Lewie '01** died June 28, 2014. She retired from McGraw-Hill Publishing after 25 years of service in 2009. She fulfilled her lifelong dream of obtaining her bachelor's

degree at Otterbein through the continuing studies program. She is survived by her husband, Dana, and one daughter.

**Kerry Bouffieux '08** died May, 24, 2014. He served Americorp in the Boston, MA, area then moved on to work for JL Production Design in Manhattan. He was a member of Sigma Delta Phi. He is survived by his parents, Carol and Larry Bouffieux and two brothers. A tree was planted by his fraternity brothers in his memory at Homecoming.

**Kyle Miller '16** died March 15, 2014. He was a junior majoring in zoo and conservation science and a member of the track team. He is survived by his parents, Craig and Pam Miller, and one sister. In honor of Kyle, the Ohio

Wildlife Center will be naming an internship after him.

## Friends

**Donna Thayer H'94** died Aug. 9, 2014. She was a former elementary school and preschool teacher, former employee of Lazarus Capri and volunteer at Otterbein. She was preceded in death by her husband, **Fred Thayer H'82**, former professor in the Department of Theatre. She is survived by three children, including **Steve Thayer '89** and his wife, **Tracy Miller Thayer '89**; and six grandchildren.

**Clyde Willis** died Aug. 19, 2014. He was a veteran of the U.S. Army serving during World War II. He was preceded in death by his wife, Jeanne Willis, former professor of science at Otterbein. •



# Cardinal Tales

by Becky Fickel Smith '81, executive director of Alumni Relations



## Fellow Alumni,

As your alumni director, it is indeed a privilege to engage with countless alumni who generously support the University through their time, talent and treasures. Each individual contribution, when combined together, strengthens the Otterbein experience. Together we propel Otterbein forward to be a nationally recognized model community of educators, leaders and learners.

My sincere gratitude is extended to hundreds of alumni volunteer Cardinals and to those alumni who collectively serve on the Alumni Networks and Alumni Council. It is their commitment to create meaningful ways for you to engage with students, faculty and with each other.

I want you to be part of the Otterbein synergy of alumni engagement. Otterbein pride is demonstrated through maintaining a meaningful, lifelong relationship with your alma mater. Attend an event, open your professional network to students and make a gift to support the programs and experiences that make Otterbein the place we love so true.

Call or email me at 614-823-1650 or [rsmith@otterbein.edu](mailto:rsmith@otterbein.edu).

*Becky Fickel Smith*

With Cardinal Pride,

**Becky Fickel Smith '81**

Executive Director of Alumni Relations

**LinkedIn** 2,285

LinkedIn Alumni Community

Get Connected: [LinkedIn-OtterbeinAlumni](#)



1,480

Alumni Facebook Friends

Be a Facebook friend: [facebook.com/otterbeinuniversity-alumni](https://www.facebook.com/otterbeinuniversity-alumni)



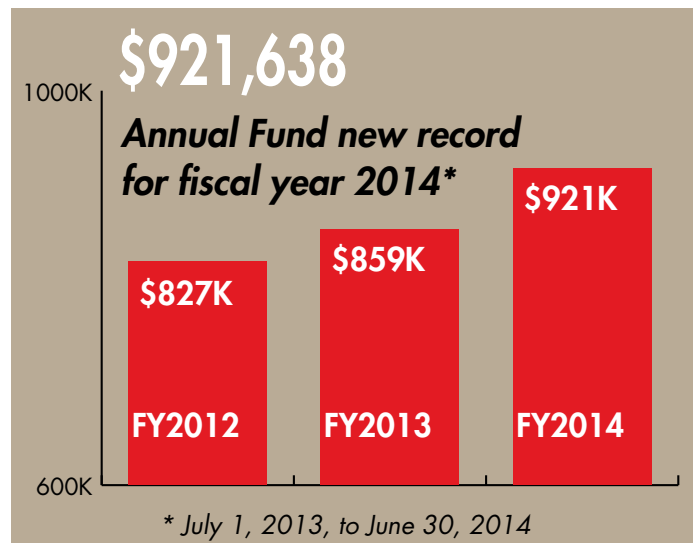
5,725

First-time visitors in 2014 to [www.otterbein.edu](http://www.otterbein.edu)

Get involved: [www.otterbein.edu/alumni/get-involved](http://www.otterbein.edu/alumni/get-involved)



2014 Homecoming attendees





Andre Lampkins '03

Evelyn Davis-Walker '00

Katherine Peyton McGrath '97

Kathryn Felsenthal Stephens '97

Sonya Lowmiller Higginbotham '98

Katherina Nikzad-Terhune '03

Erin Stewart Miller '97

## Congratulations to the 2014 Young Alumni Award Winners

The annual Young Alumni Awards Ceremony was held Sept. 19 in Roush Hall and honored seven outstanding young alumni for their notable personal and professional achievements. The Young Alumni Awards recognize alumni age 40 and younger whose contributions exemplify one of Otterbein's Five Cardinal Experiences.

All of the award winners were introduced by their nominator or a faculty or staff member who had an impact on their lives while at Otterbein. Friends, family and members of the Otterbein community came to celebrate their achievements and hear how their experiences at Otterbein shaped their personal and professional paths. By the end of the evening, stories of resilience, learning, opportunity and giving back had filled the room and everyone in attendance was reminded of the meaningful impact Otterbein has on the lives of students and alumni alike.

To read award winner bios and view photos from the Ceremony or download the 2015 nomination form, visit: [www.otterbein.edu/alumni/youngalumniawards](http://www.otterbein.edu/alumni/youngalumniawards). 

### 2014 Young Alumni Award Winners

#### Community Engagement Award

- **Evelyn Davis-Walker '00**  
One of 25 recipients out of 9,000 applicants to receive a \$25,000 grant from AOL for Beloved Memories, a memory game to assist people with Alzheimer's disease.
- **Kathryn Felsenthal Stephens '97**  
Former executive director of Walk with a Doc, expanded the program from one walk in Columbus to 147 programs in 27 states and four countries.

#### Research/Creative Achievement Award

- **Katherina Nikzad-Terhune '03**  
Owns a clinical practice where she counsels family caregivers of Alzheimer's patients and others.

#### Professional Achievement Award

- **Sonya Lowmiller Higginbotham '98**  
Director of Corporate Communications at Worthington Industries; Columbus Business First's "Forty Under 40" honoree.
- **Katherine Peyton McGrath '97**  
Senior vice president of Human Resources at Fahlgren Mortine; Columbus CEO HR Excellence Executive of the Year 2014.

#### Leadership and Citizenship Award

- **Andre Lampkins '03**  
Manager of community and small business outreach at Vermont Energy Investment Corporation/Efficiency Smart.
- **Erin Stewart Miller '97**  
Environmental steward for Columbus Mayor Michael B. Coleman's Get Green Columbus initiative.

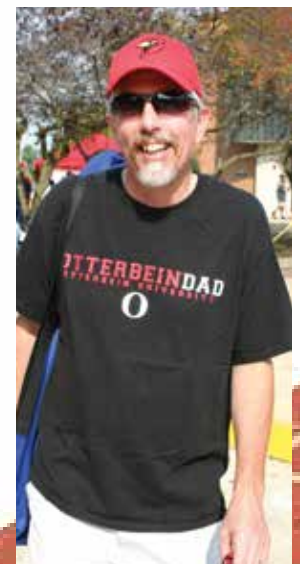


*There's no place like*  
**HOME**  
 COMING  
 September 19 and 20, 2014

"It was the best homecoming ever!"



"It was wonderful. I loved the 25th reunion and the OtterTalks. I talked with so many old friends!"







"The Greektown tailgate was a great idea!"



Save the date for Homecoming 2015!  
 Sept. 25 & 26  
 Class reunions for '70, '75, '80, '85, and '90  
 will be held on September 26, 2015. Join us  
 at the '70s and '80s gathering at the Embassy  
 Suites in the evening!  
 For more photos and a recap on Homecoming,  
 visit [www.otterbein.edu/homecoming2014](http://www.otterbein.edu/homecoming2014)

"There was so much to do I didn't get to it all."





Otterbein University and Travel Warther present

# TRAINS & PARKS IN COLORADO

Aug. 15-23, 2015

Aug. 29-Sept. 6, 2015

**Deadline fast approaching - Jan. 12**



## Your trip includes:

- Nine days, eight nights in unique, luxury and historic hotels
- 16 meals (all breakfasts and most dinners)
- All taxes, fees, gratuities and trip insurance
- Pikes Peak Cog Railway
- Garden of the Gods and Mesa National Park
- U.S. Air Force Academy and much more

This tour has been personally designed by our guide, Mark Warther, with your comfort in mind. Prices begin at \$2,295 per person for double occupancy, plus airfare. A deposit of \$250 per person is due by Jan. 12, 2015. Fully refundable until May 1, 2015. Questions? Contact Mark Warther, 330-340-0122, mark@travelwarther.com or [www.otterbein.edu/summertravel](http://www.otterbein.edu/summertravel)



## 2015 Cardinal Migration • 21st Celebration

# CHARLESTON, SC

*A city of Southern charm with a history dating to the 17th century*

**Basic Package, Sunday, March 1 to Tuesday, March 3,  
\$200 per person includes ...**

- Sunday Reception at 39 Rue de Jean
- Historic Charleston Carriage/Walking Tour
- Civil War Walking Tour
- Historic Charleston House Tour with a Twist (additional cost)
- Black History/"Porgy and Bess" Gullah Tour
- Banquet

**Post-migration Wednesday, March 4, \$150 per person  
includes Drayton Hall and Middleton Place Plantation Tour**

Headquarters Hotel: Embassy Suites Historic Charleston.  
Reservations can be made by calling the hotel directly at  
843-723-6900.



**"Number 1 city to visit in the U.S. and Canada"**

*Travel + Leisure*

**"Best city in the world"**

*Conde Nast Traveler Reader's Choice Award*

**Register Early! Limited hotel space**

**Register NOW at [www.otterbein.edu/alumni/migration](http://www.otterbein.edu/alumni/migration)**

**Lodging and Registration Deadline: January 12, 2015**





# Get Back to Where You Once Belonged!

Join us for the first **"Summer Breeze"** celebration just for the graduates of the '70s decade. Save the date for June 26-28, 2015!

If you can't remember the '70s, come back and we'll remind you through history, music, clothing and just hangin' out in the not so quiet, peaceful village.

Top Ten Reasons to Come to "Summer Breeze" on June 26, 27, 28, 2015:

10. This time you won't want to cut class.
9. No late-night "fire drills."
8. This time you can choose your roommate.
7. No curfew. No card keys. No house Mom.
6. Flint's Carryout is still open and they have a bar!
5. Donut walk, no running involved.
4. No waiting to use the hall phone.
3. This time there is no streaking (no one needs to see that).
2. Westerville is no longer a dry town.
1. Your friends will be here!



Learn something new,

make a new connection, relive the carefree years of young adulthood. See details as they develop at

[www.otterbein.edu/alumni/summerbreeze](http://www.otterbein.edu/alumni/summerbreeze)



## Planned Highlights of the Weekend

### FRIDAY

- '70s Gathering, Old Bag of Nails, 5 - 8 p.m.
- Fourth Friday Festival, Uptown Westerville, 6 - 9 p.m.
- Otterbein Summer Theatre production, 8 p.m.
- Donut run to Schneider's Bakery

genealogy; recap of the '70s through music, culture, clothing and events; retirement careers

- Tours of Westerville and campus, walking or riding; bike tours
- Lunch
- Ice cream social on Towers Plaza
- Dinner and entertainment

### SATURDAY

- Morning and afternoon workshops/lectures, possible topics include nutrition and fitness for midlife;

### SUNDAY

- Optional spiritual offering (outdoors)
- Lunch

Brought to you by

Jim Freshour '70, Wendy Roush '71,  
Marge Morgan Doone '72,  
Cheryn Alten Houston '73,  
Chuck Erickson '76, Tim Hayes '77,  
Chris Kaiser '77, Jeff Yoest '77,  
Pam Burns Hayes '78  
and Sharon Ockuly '78



**I LOVE  
the  
70s**



# Spring Alumni Weekend 2015



## OTTERBEIN UNIVERSITY ALUMNI WEEKEND

April 24 – 26, 2015

Reunions for the Classes of 1950, 1955 & 1960

Golden Reunion for the Class of 1965

Alumni Awards Ceremony with music, song and inspiration



Retiring Alumni Council members serving 2011–2014: **Juanita Walraven Rusk '60**, **Chuck Erickson '76**, **Margaret Morgan Doone '72 '85**, **Russ Beitzel '96**, **Chris Kaiser '77**, **Manny Brown '09**. Not pictured: **Shannon Lord Krakovich '00**.



Alumni Council new members 2014–2017: **Larry Schultz '74**, **Sally Banbury Anspach '64**, **Wesley Thorne '96**, **Tuesday Beerman Trippier '89**, **Martha Paul '80**, **Tim Cain '88** and **Jeff Myers '80**. Not pictured: **Jean-Claude Ndongo MBA '13**.

## Save that Date!

Mark your calendar now for these upcoming alumni events in 2015 and plan on joining us. More information can be found at [www.otterbein.edu/alumni](http://www.otterbein.edu/alumni), or contact the Office of Alumni Relations at 1-888-614-2600 or 614-823-1650.

January 16 / **Alumni Council Meeting**

February 14 / **Cardinal Spirit Day**

March 1-5 / **Cardinal Migration, Charleston, SC**

April 24-26 / **Alumni Weekend**

June 20 / **Junebug Jamboree, Waynesville, OH**

June 26-28 / **Summer Breeze '70s Weekend at Otterbein**

August 14 / **Alumni Council Meeting**

August 15-23 and August 29-September 6 /

**Colorado Trains and Parks**

September 25 and 26 / **Homecoming**

## Board of Trustees

Peter R. Bible '80  
Larry C. Brown '80  
Alicia Caudill Colburn '95  
Deborah E. Currin '67  
David W. Fisher '75  
William Edward Harrell Jr. '94  
Cheryl L. Herbert  
Madeleine Holmes '15  
Joseph N. Ignat '65  
K. Christopher Kaiser '77  
Christina M. Kirk  
Kathy A. Krendl  
Bruce G. Mandeville  
Mary W. Navarro  
Nevalyn Fritsche Nevil '71  
Rebecca C. Princehorn '78  
James A. Rutherford  
Nicole D. Sherbahn '15  
Melissa P. Johnson Simkins '99  
Brant O. Smith '95  
Kent D. Stuckey '79  
Mark R. Thresher '78  
Alan Waterhouse '82  
Alec Wightman

## Living Trustee Emeriti

Thomas R. Bromeley '51  
Michael H. Cochran '66  
William L. Evans '56  
Judith G. Gebhart '61  
Mary F. Hall '64  
John T. Huston '57  
Erwin K. Kerr  
John E. King '68  
William E. LeMay '48  
John W. Magaw '57  
Thomas C. Morrison '63  
Jane W. Oman H'96  
Paul S. Reiner '68  
Wolfgang R. Schmitt '66

## Officers of the University

Chairman of the Board: Mark R. Thresher  
Vice Chairman: William Edward Harrell Jr.  
Vice Chairman: Alec Wightman  
Secretary: Cheryl L. Herbert  
Assistant Secretary: James A. Rutherford  
President of the University: Kathy A. Krendl  
VP for Business Affairs: Rebecca D. Vazquez-Skillings



# There are more than 2,900 reasons to support Otterbein University!

**Your support of the Annual Fund** makes an immediate and life-changing impact for Otterbein students every day. When you join the Annual Fund community of donors, you make an Otterbein experience affordable and accessible for today's students.



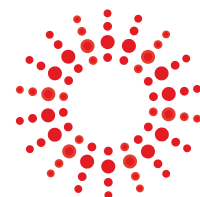
Every gift **COUNTS**. Will you put your **OTTERBEIN** pride to work today?

Please use the envelope provided in this magazine to make a gift, or visit [www.otterbein.edu/makeagift](http://www.otterbein.edu/makeagift).



# make it COUNT

Put Your **Otterbein** Pride to Work







**OTTERBEIN**  
UNIVERSITY  
1 South Grove Street  
Westerville, OH 43081



change service requested

**Nonprofit Org**  
**US Postage**  
**PAID**  
**Permit No.**  
**4416**  
**Columbus, OH**

PARTING  
.....  
SHOT

**Cardinals' New Nest?** Portable hammocks gave students the perfect spot to read and relax outside Courtright Memorial Library on a warm fall day.