

Otterbein University

## Digital Commons @ Otterbein

---

1972-1973 Season

Productions 1971-1980

---

11-17-1972

### Alice in Wonderland

Otterbein University Theatre and Dance Department

Follow this and additional works at: [https://digitalcommons.otterbein.edu/production\\_1972-1973](https://digitalcommons.otterbein.edu/production_1972-1973)



Part of the [Acting Commons](#), [Dance Commons](#), and the [Theatre History Commons](#)

---

#### Recommended Citation

Otterbein University Theatre and Dance Department, "Alice in Wonderland" (1972). *1972-1973 Season*. 5.  
[https://digitalcommons.otterbein.edu/production\\_1972-1973/5](https://digitalcommons.otterbein.edu/production_1972-1973/5)

This Book is brought to you for free and open access by the Productions 1971-1980 at Digital Commons @ Otterbein. It has been accepted for inclusion in 1972-1973 Season by an authorized administrator of Digital Commons @ Otterbein. For more information, please contact [digitalcommons07@otterbein.edu](mailto:digitalcommons07@otterbein.edu).



John Cain and Beth Machlan play the roles of the Caterpillar and Alice, respectively, in the Children's Theatre production of "Alice in Wonderland". The show will run November 17 through the 19th. Tickets are available in the box office at Cowan Hall.

## Theatre to Present Wonderland

A special children's theatre dramatization of Lewis Carroll's magical story and adventure "Alice in Wonderland", will be presented by the Otterbein College Theatre on Nov. 17, 18, and 19 in Cowan Hall. Performance times for the College's ninth children's theatre production are Fri. at 7:30 p.m., Sat. at 10:30 a.m. and 1:30 p.m. and Sun. at 1:30 p.m.

The show is under the general direction of Mrs. Petie Dodrill with David Mays serving as musical director, Keith Malick as designer-technical director, and Debbie Herr as choreographer.

Appearing in her second Otterbein Children's Theatre production, Beth Machlan will portray Alice, the little girl who walks through her looking glass into a Wonderland-world of fantastic illusions.

Alice encounters the White Rabbit (Jim West) and the Caterpillar (John Cain) as well as the Red Queen of Hearts (Heidi Woodbury) who challenges her to a match of croquet. She also attends a tea party with the Mad Hatter (Tony Magia), March

Hare (Jerry Confer), and Doormouse (Tricia Dodrill).

The actor-characters will feature highly stylized costumes and make-up designed by Mrs. Dodrill in collaboration with cost member Pat Perry.

Tickets will be sold at \$1.00 for adults and 75c for children. Cowan Hall box office will be open Mon. through Fri. from 1-4 p.m. For reservations and information call 882-3601, ext. 331.

### Otterbein wonderland

## Alice gets special treatment by Malick

What is a "Wonderland" in the eyes of a child? This is the problem student designer-technical director Keith Malick faces with the Otterbein College Children's Theatre production "Alice in Wonderland" to be presented Nov. 17-19. Performance times for the show are Friday at 7:30 p.m., Saturday at 10:30 a.m. and 1:30 p.m. and Sunday at 1:30 p.m.

Malick in collaboration with general director Mrs. Petie Dodrill, has used his imagination under the scenic demands of the Lewis Carroll story with basic two-dimensional cartooning in the style of Walt Disney. His goal is to create "a flow of one dream-like effect into another."

home to croquet game to trial, dramatic transitions will be made with the magic of strobe lights. A garden of smiling flowers will fly in and disappear as Alice experiences new and unique adventures.

Alice meets the Caterpillar on a specially created mushroom and the Doormouse in an over-sized tea pot, both designed by Malick.

Other special effects will be done by the use of original slide projections turn-tables and highly stylized sound and lighting patterns.

Tickets will be sold at \$1 for adults and 75 cents for children. Cowan Hall box office will be open Monday through Friday from 1-4 p.m. For reservations and information call 882-3601, ext. 331.

## Theatre Presents "Alice in Wonderland"

A special children's theatre dramatization of Lewis Carroll's magical story and adventure, "Alice in Wonderland," will be presented by the Otterbein College Theatre on Nov. 17, 18, and 19 in Cowan Hall. Performance times for the College's ninth children's theatre production are Fri. at 7:30 p.m., Sat. at 10:30 a.m. and 1:30 p.m. and Sun. at 1:30 p.m.

Appearing in her second Otterbein Children's Theatre production, Beth Machlan will portray Alice, the little girl who walks through her looking glass into a wonderland-world of fantastic illusions. In the confusion of shrinking to a height of three inches, the bewildered Alice loses her temper and is checked by the frantic White Rabbit, portrayed by Jim West, and the opium-smoking Caterpillar, portrayed by John Cain.

At the home of the Duchess (Jan Morelli), Alice converses with the Frog-Footman (Terry Espencheid) and the Cook (Pam Hill) as she watches a baby turn into a pig.

Becky Grimes, portraying the Cheshire Cat, directs Alice to a tea party attended by Tony Mangia as the Mad Hatter, Jerry Confer as the March Hare, and Tricia Dodrill as the Doormouse.

The Mock Turtle (Vicky Korosei) and the Gryphon (Allen Roesse) tell Alice a sad story. Leaving them, she encounters Tweedledum and

Tweedledee (Bill Brewer and Randy Adams) who befriend Alice and accompany her to the Red Queen of Hearts' (Heidi Woodbury) Croquet game, where the White Queen (Pat Perry) cross-examines Alice to qualify her participation in the game.

Fiasco strikes with a report of stolen tarts and the Knave of Hearts (Thom Hastings) suffers immediate accusation by the King of Hearts (Sam Militello).

Other members of the cast include John Dell as the Executioner; and Sue Kocks, Robyn Pruett, Denise Kilgo, Lanna Krogman, and Julie Witsberger as the cards.

The show is under the general direction of Mrs. Petie Dodrill with David Mays serving as Musical Director and Keith Malick as Designer-Technical Director.

Tickets will be sold at \$1.00 for adults and students and 75 cents for children. Cowan Hall box office will be open Mon. through Fri. from 1-4 p.m. beginning Nov. 6. For reservations and information call 882-3601, ext. 31.

## Classic Tale To Be Staged For Children

A special children's theatre dramatization of Lewis Carroll's classic story and adventure, "Alice in Wonderland," will be presented by Otterbein College Theatre Nov. 17, 18 and 19 in Cowan Hall.

Performance times for the college's ninth children's theater production are Friday at 7:30 p.m., Saturday at 10:30 a.m. and 1:30 p.m., Sunday at 1:30.

BETH MACHLIN will portray Alice, the little girl who walks through her looking glass into a world of fantastic illusions.

The show is under the general direction of Petie Dodrill, with David Mays serving as musical director and Keith Malick as designer-technical director.

**OTTERBEIN COLLEGE**  
Children's Theatre  
presents

**ALICE IN WONDERLAND**

Fri., Nov. 17, 7:30 p.m.  
Sat., Nov. 18, 10:30 a.m. and 1:30 p.m.  
Sun., Nov. 19, 1:30 p.m.

**COWAN HALL** Tickets 75¢ (Adults \$1.00)  
Cowan Hall Box Office open weekdays, 1 to 4 p.m.  
For reservations phone 882-3601, Ext. 331



# Alice Opens Wonderland Tonight

A stylized musical version of Lewis Carroll's classic "Alice in Wonderland" will be presented as a major production of the Otterbein College Theatre. Under the direction of Mrs. Petie Dodrill, "Alice" will open this evening at 7:30 p.m. in Cowan Hall with repeat performances on Sat. at 10:30 a.m. and 1:30 p.m. and Sun. at 1:30 p.m.

The curious Alice walks through her looking glass into a

Wonderland world. She is awed by a buck-toothed White Rabbit and an impressively turbaned Caterpillar with his green face and elongated snout. She is amazed by a snowy haired Mad Hatter with his gigantic top hat and wild eyes.

Special effects including tables and doors that grow taller and taller will create the illusion of Alice's growing smaller. The disappearance of the broadly smiling Cheshire Cat will be

done by original slide projections. Other staging will involve the audience and direct contact with the children.

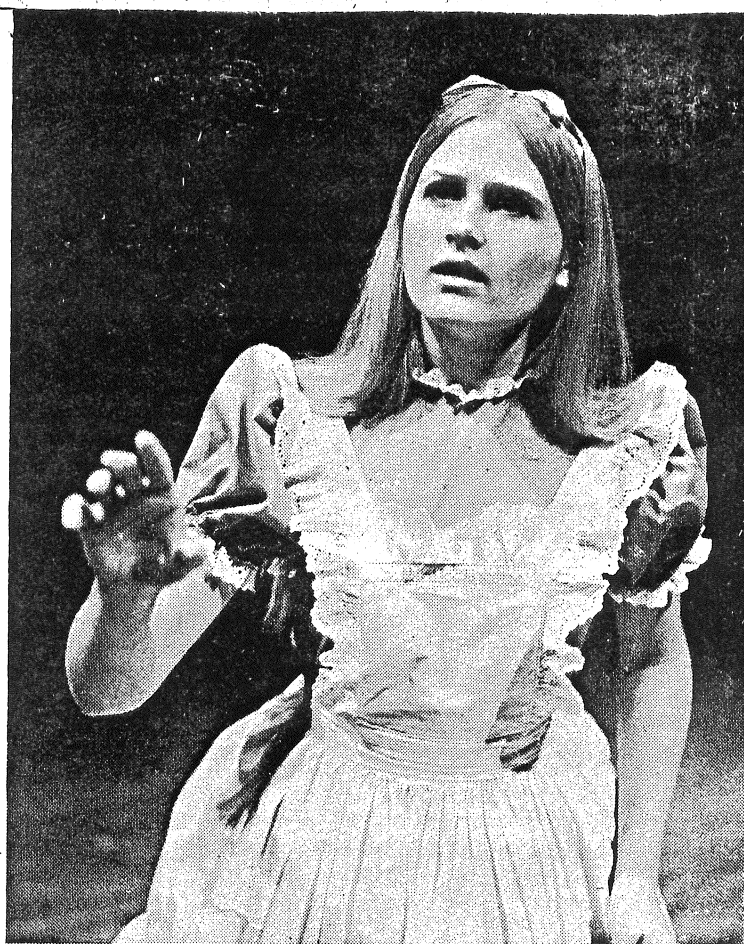
Choreography by Debbie Herr will animate the music directed by David Mays.

Costumes for the Wonderland creatures will be highly stylized with animal head coverings, magnificent ears and crowns. A gothic gowned Duchess is an example of the many period costumes Mrs. Dodrill will incorporate into the production.

Pat Perry, make-up designer in collaboration with Mrs. Dodrill, will work with a three-way concept encompassing costume, make-up and animal characteristics to enliven the characters.

An immense tea pot for the sleepy Doormouse and an over-sized mushroom will accent Keith Malick's setting which will capture the child's image and fantasy of Wonderland.

Tickets will be sold at \$1.00 for adults and 75c for children and Otterbein students. Cowan Hall box office will be open today from 1-4 p.m. and before the performances.



Alice (Beth Machlan) grasps for the key to Wonderland as she shrinks to a height of three inches in the Otterbein College Children's Theatre production of "Alice in Wonderland". Performance times are tonight at 7:30 p.m., Sat. at 10:30 a.m. and 1:30 p.m. and Sun. at 1:30 p.m.

## Sunday

Otterbein College, Westerville, gives one last performance of the children's classic "Alice in Wonderland" at 1:30 p.m. today. Newark's Beth Machlan is Alice.

Something a little different at noon is the music of the Broadway hit "Godspell" based on the Gospel and the writing according to St. Mark. It is being put on at Blessed Sacrament Church, 378 E. Main St., by a 70-voice choir from Sts. Peter and Paul Seminary. If you plan to attend, go early: last year's production played to a capacity crowd.

As part of the series of organ concerts at the Ohio Theater, Columbus, Roger Garrett is featured at the Morton Organ at 4 p.m.

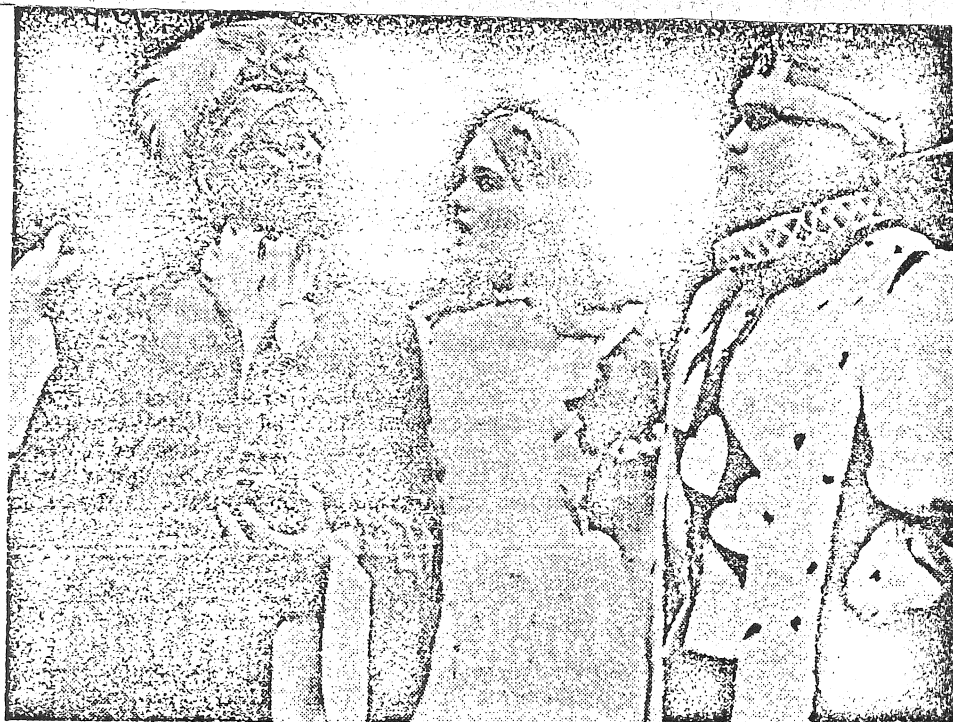
The Denison Singers gives its first local concert at 8:15 p.m. at Granville's First Presbyterian Church. Sixteen students, under the direction of Dr. William Osborne, will perform works commemorating

the 300th anniversary of the death of Heinrich Scheutz, of the early German Baroque period.

"Patton" the movie that won seven Oscars (including one for George C. Scott who refused it) is being presented on TV for the first time at 9 p.m. on channel 6. The movie follows Gen. George S. Patton's major World War II campaigns and shows his tough, abrasive personality on one hand and his love of writing poetry and quoting from the Bible on the other.

## Campus Life

Samuel Militello of Mentor will play "King of Hearts" in the Otterbein College children's theater production of "Alice in Wonderland" Nov. 17 to 19.



## FINAL PERFORMANCE SET

The Otterbein College Children's Theater will offer the final performance of "Alice in Wonderland" at 1:30 p.m. Sunday in Cowan Hall. Directed by Mrs. Petie Dodrill, the presentation features,

from left, John Cain, Beth Machlin and Sam Militello. The play is set for Friday at 7:30 p.m. and Saturday at 10:30 a.m. and 1:30 p.m.

## 'Alice in Wonderland' was enjoyed by kids, adults

By Sarah Skaates

An auditorium packed with small fry and a sprinkling of adults plus the addition of an extra performance this year should be proof enough that Petie Dodrill and the Otterbein College Children's Theatre has come to mean something very special in central Ohio.

LAST WEEKEND'S "Alice in Wonderland" was as full

of color, pageantry and special effects as the talented staff and cast could manage - and they managed very well!

So special were many of the costumes and make-up effects that it was well worth the price of admission simply to go backstage to meet the Caterpillar, March Hare, Frog Footman and Doormouse.

ALICE HERSELF was play-

ed with spirit as well as charm by Beth Machlan who won so many childish hearts last season with her portrayal of Cinderella. As the only "normal" character in the play, she was in constant danger of being eclipsed by the assortment of weird and wonderful residents of Wonderland. Alice managed to hold her temper as well as her grip on the show, and all ends with the right sense of balance.

IT IS DIFFICULT to single out individual performances since each of them was just right in its own way. Jerry Confer was delightfully mad as the March Hare, with Tony Mangia aiding and abetting the ridiculous as his tea-party partner, the Mad Hatter. Tricia Dodrill was lovable as the sleepily limp Doormouse.

Bill Brewer and Randy Adams carried off their segment of fun and foolishness with high humour as Tweedle-dum and Tweedledee. David Mays and Dan Clark provided excellent musical accompaniment on piano and bass guitar.

THE ONLY element present in performances of "Alice in Wonderland" which has been noticeably missing in previous shows was the audible rustle of children squirming. This is no reflection on the no-holds-barred treatment the play was given by Director Petie Dodrill and Designer-Technical Director Keith Malick.

## Otterbein set

### for 'Alice'

The Otterbein College Children's Theatre presents "Alice in Wonderland" this Friday, Saturday and Sunday in Cowan Hall. Pete Dodrill has directed the production.

Performance times for "Alice in Wonderland" are: 7:30 p.m. Friday, 10:30 a.m. and 1:30 p.m. Saturday, and 1:30 p.m. Sunday. Call 882-3601, ext. 331, for ticket information.

# 'Alice' to open at Otterbein

P.O. 11/16/72

The Otterbein College Children's Theatre production of Lewis Carroll's "Alice in Wonderland" to be presented tomorrow, Saturday and Sunday will feature highly stylized and carefully coordinated make-up and costumes.

General director Mrs. Petie Dodrill and make-up designer Pat Perry will present theatrical characterizations based on a three-way concept encompassing the costumes, make-up and animal traits.

Special headdresses with larger-than-life ears will be worn by the actor-animals as well as fur legs, striped tails, and slithering reptile robes.

Actor-humans will be costumed in period pieces including everything from medieval, Elizabethan, and Gothic gowns to spats and gloves from the 1890's.

Vital to the characterization of the animals in Wonderland is the intricate makeup. The makeup artists must build putty noses on Caterpillar and Mad Hatter, a green face for the Frog-foot Man, and even hearts and diamonds on the faces of the Cards. The March Hare and White Rabbit have buck teeth created with makeup for the show, in keeping with their characters.

From their animated faces

to the white spats and gloves, the Wonderland creatures Alice meets will delight audiences of all ages.

Performance times for "Alice in Wonderland" are Friday at 7:30, Saturday at 10:30 a.m. and 1:30 p.m. and Sunday at 1:30 p.m. in Cowan Hall.

Tickets are available at the Children's Theatre box office in Cowan Hall from 1-4 p.m. weekdays. Reservations may be made by calling the college.



Alice (Beth Machlan) honors the King of Hearts (Sam Militello) before she testifies to the court in the Otterbein College Children's Theatre production of "Alice in Wonderland" to be presented tomorrow, Saturday and Sunday in Cowan Hall. Performance times are Fri. at 7:30 p.m., Sat. at 10:30 a.m. and 1:30 p.m. and Sun. at 1:30 p.m.

# Otterbein's Children Theatre to present 'Alice in Wonderland' Nov. 17, 18, 19

P.A.  
10/24/72

A special children's theatre dramatization of Lewis Carroll's magical story and adventure, "Alice in Wonderland," will be presented by the Otterbein College Theatre on Nov. 17, 18, and 19 in Cowan Hall. Performance times for the college's ninth children's theatre production are Friday at 7:30 p.m., Saturday at 10:30 a.m. and 1:30 p.m. and Sunday at 1:30 p.m.

Appearing in her second Otterbein Children's Theatre production, Beth Machlan will portray Alice, the little girl who walks through her looking glass into a wonderland-world of fantastic illusions. In the confusion of shrinking to a height of three inches, the bewildered Alice loses her temper and is checked by the frantic White Rabbit, portrayed by Jim West, and the Opium-smoking Caterpillar, portrayed by John Cain.

At the home of the Duchess (Jon Morelli), Alice converses

with the Frog-Footman (Terry Espencheid) and the cook (Pam Hill) as she watches a baby turn into a pig.

Becky Grimes, portraying the Cheshire Cat, directs Alice to a tea party attended by Tony Mangia as the Mad Hatter, Jerry Confer as the March Hare, and Vicki Karosei as the sleepy Doormouse.

Tweedledum and Tweedledee (Bill Brewer and Randy Adams) befriend Alice and accompany her to the Red Queen of Heart's (Heidi Woodbury) croquet game, where the White Queen (Pat Perry) cross-examines Alice to qualify her participation in the game.

Fiasco strikes a report of stolen tarts and the Knave of Hearts (Thom Hastings) suffers immediate accusation by the King of Hearts (Sam Militello).

Other members of the cast include Allen Roese as the

Executioner, and Sue Kocks, Robyn Pruett, Denise Kilgo, Lanna Krogman, and Julie Witsberger as the cards.

The show is under the general direction of Mrs. Petie Dodrill with David Mays serving as Musical Director and Keith Malick as Designer-Technical Director.

Tickets will be \$1.00 for adults and \$.75 for children. Cowan Hall box office will be open Monday through Friday from 1-4 p.m. beginning Nov. 6. For reservations and information call the college.

# Show Hopes To Involve Youngsters

339 A stylized musical version of Lewis Carroll's classic, "Alice in Wonderland" will be presented as a major production of Otterbein College Theater, under the direction of Petie Dodrill, Nov. 17, 18 and 19.

Performance times for the fantasy-oriented adaptation are Friday at 7:30 p.m., Saturday at 10:30 a.m. and 1:30 p.m., and Sunday at 1:30 p.m.

**THE CURIOUS ALICE** walks through her looking glass into a Wonderland world, is awed by an impressively turbaned Caterpillar with his green face and elongated snout, and is amazed by a snowy-haired Mad Hatter with his gigantic top hat and wild eyes.

Special effects including tables and doors that grow taller and taller will create the illusion of Alice's growing smaller.

The disappearance of the broadly smiling Cheshire Cat will be done by original slide projections.

**OTHER STAGING** will involve the audience and direct contact with the children.

Choreography by Debbie Herr will animate the music directed by David Mays.

Costumes for the Wonderland creatures will be highly stylized with animal head coverings, ears and crowns.

**A GOTHIC-GOWNED** duchess is an example of the many period costumes Mrs. Dodrill will incorporate into the production.

Pat Perry, makeup designer in collaboration with Mrs. Dodrill, will work with a three-way concept of encompassing costume, makeup, and animal characteristics to enliven the characters.

Columbus Dispatch

11/5/72



# Malick creates 'Wonderland' at Otterbein

What is a "Wonderland" in the eyes of a child? This is the problem student designer-technical director Keith Malick faces with the Otterbein College Children's Theatre production "Alice in Wonderland" to be presented Nov. 17, 18 and 19. Performance times for the show are Friday at 7:30 p.m., Saturday at 10:30 a.m. and 1:30 p.m. and Sunday at 1:30 p.m.

MALICK, IN collaboration with general director Mrs. Petie Dodrill, has used his imagination under the scenic demands of the Lewis Carroll story with basic two-dimensional cartooning in the style

of Walt Disney. His goal is to create "a flow of one dream-like effect into another."

As the "Wonderland" setting shifts from Alice's home to croquet game to trial, dramatic transitions will be made with the magic of strobe lights. A garden of smiling flowers will fly in and disappear as Alice experiences new and unique adventures.

ALICE MEETS the Caterpillar on a specially created mushroom and the Doormouse in an over-sized tea pot, both designed by Malick.

Other special effects will be done by the use of original slide projections, turn-tables and highly stylized sound and lighting patterns.

Tickets will be sold at \$1.00 for adults and 75¢ for children. Cowan Hall box office will be open Monday through Friday from 1-4 p.m. For reservations and information call the college.



The Caterpillar (John Cain) casts a cold shoulder at Alice (Beth Machlan) as the King of Hearts (Sam Militello) conducts court in the Otterbein College Children's Theatre production, "Alice in Wonderland," to be presented Nov. 17, 18, and 19. Performance times for the show are Friday at 7:30 p.m., Saturday at 10:30 a.m. and 1:30 p.m., Sunday at 1:30 p.m.