

Theatre department journeys into the woods

By Almée Zerla

Cinderella, Jack and the Beanstalk, Little Red Riding Hood and Rapunzel will be on Otterbein's campus April 30-May 3 and May 7-9 as the musical "Into the Woods" is co-sponsored by the department of theatre and dance and the department of music.

Stephen Sondheim and James Lapine's musical merges the traditional fairy tale characters with a newly-created tale of a childless couple—the baker and his wife.

Senior Katy Bavaro, who plays Cinderella, said, "Each fairy tale is very individualized, but at the same time it is woven into every other story."

The story starts out headed toward a happily ever after ending, but the second act reveals the down side of getting what you wish for. Overall, it offers insight on growing up and taking responsibility for the choices made.

Sophomore Todd Crain, who plays the ducl role of the Wolf and Cinderella's Prince, said it is a challenge to play both roles. "I've never done two roles in the same show before. You have to make

choices and different goals for each role. They are very similar—they both know what they want, get it, but it is not enough."

"Into The Woods" won the 1988 New York Drama Critics Circle Award and the 1988 Drama Desk Award for Best Musical as well as earning Tony Awards for Best Score and Best Book.

Sophomore Scott E. Wilson, properties master for the show, said, "Everything—set design, props, lights and costumes, are above and beyond what we've ever tried to do before."

Artistic Director Dennis Romer will again direct the spring musical. Dr. Craig Johnson, associate music professor, will serve as music director and music lecturer Stephen Monroe is the vocal director.

Lauren Lambie, who created costumes for the Otterbein production of "Evita" in 1990, will design the costumes for this play. Otterbein expects to spend \$7,000 on the lavish costumes for this production.

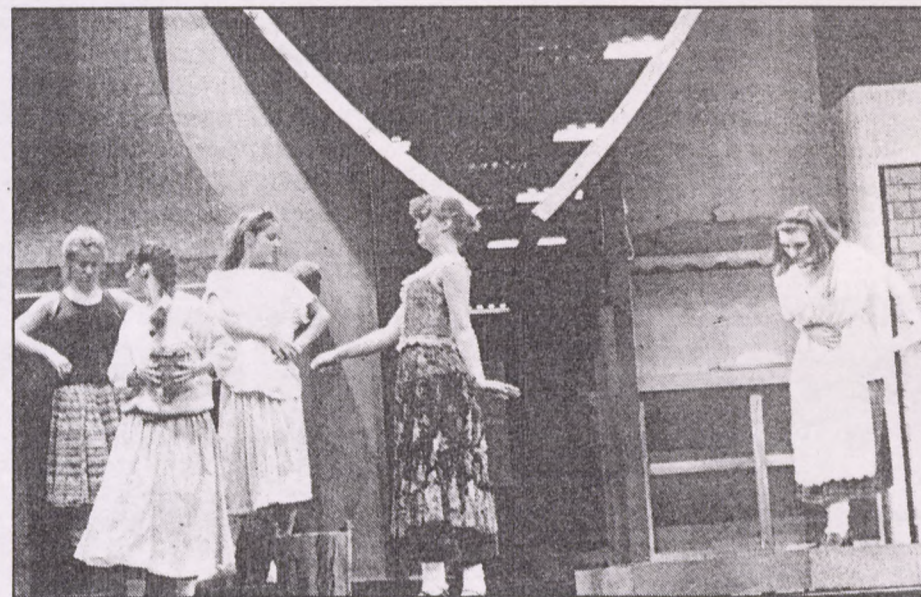
The performance is being choreographed by Patricia Hiatt. Set designer Rob Johnson will be responsible for bringing the woods into Cowan Hall for this production and he promises there will be plenty of magic and

special effects such as the witch rising on a cloud of fog or the bean stalk that will grow from the orchestra pit to the top of the theater.

All performances will be held in Cowan Hall. The opening night performance be-

gins at 7:30 p.m. Other evening performances will begin at 8 p.m. and the Sunday matinee is at 2 p.m.

Student tickets are free with i.d. The box office is open between 1 and 4:30 p.m. weekdays.



Students practice for the theatre department's performance of "Into the Woods." Photo by Robin Mobley

WEEKender

8 NIGHT LIFE

The blues cometh: Guitarist Albert Collins will be at the Newport, while pianist Valerie Wellington will perform at the King Complex.

13 THEATER

Spotlight Dinner Theatre's *Big River* does a fine job of presenting a big musical on a small stage.

14 KIDS

Coloring books, the hokeypokey and the chicken dance are among the many highlights of Sunday's Lollipop concerts, presented by the Columbus Symphony Orchestra.

17 OUT & ABOUT

Going Places takes a vacation prelude by looking at *American Places: A Writer's Pilgrimage to 15 of This Country's Most Visited and Cherished Sites*.

21-27 DINING FOR MOM

This guide will help you find the right place to treat Mom to dinner on her special day. *Reclining* reviews of restaurants, and their special Mother's Day offerings. The Grumpy Gourmet takes a look back at Mother's Days of yesteryear, announces his semiannual list of Columbus' top restaurants and tells what's new in dining in Peapacks.

COVER STORY

Once upon a time in the land of Westerville... Otterbein College takes a trip *Into the Woods*, the Stephen Sondheim musical where fairy tales collide. Among the characters who wander through the fractured fable are: the Baker (Bryan Brems); the Baker's Wife (Mandy Fox), center; and the Witch (Nancy Martin). The production opens tonight in Cowan Hall.



'Into the Woods'

Otterbein ventures into the land of fractured fairy tales

OHIO
NEWS BUREAU INC.
CLEVELAND, OHIO 44115
216/241-0675

THE RECORD
HARRISON, OH.
W CIRC. 3,700

April 23, 1992

APR-23-92

dress
it 2.20
ol 389
sa
eliver
ac
es
f

Moore earns part in Otterbein production

Corey Moore, son of Christine Moore, 7440 Morgan Road, Cleves, will be appearing as "Jack" in Otterbein College Theatre's musical production of, "Into The Woods," by Stephen Sondheim and James Lapine. The college's theatre department, in conjunction with the music department, will present the award-winning play April 30-May 3 and May 7-9.

The musical merges "Cinderella," "Jack in the Beanstalk," "Little Red Riding Hood" and "Rapunzel" with a newly-created tale of a childless couple — the

baker and his wife. The couple are willing to steal Cinderella's slipper, Jack's cow, a lock of Rapunzel's golden tresses and Red Riding Hood's hood for the chance to have a baby promised them by a witch who needs the items to regain her youth and beauty. The play, with these familiar fairy tale characters, will appeal to children while adults will appreciate the underlying truths accompanying the varied stories in the musical.

Moore, a 1989 graduate of Harrison High School, is a senior at Otterbein, majoring in thea-

tre. His Otterbein credits include last year's musical, "Man of La Mancha," Opera Theatre's production of "H.M.S. Pinafore" and Otterbein's 1990 musical, "Evita."

"Into The Woods" will be performed in Cowan Hall on the Otterbein campus. For ticket information and times of the performances, call (614) 898-1109, between 1-4:30 p.m., weekdays.

Otterbein College, an independent, liberal arts institution affiliated with the United Methodist Church, is located in Westerville.

OHIO NEWS BUREAU INC.

CLEVELAND, OHIO 44115

216/241-0675

COLUMBUS DISPATCH

COLUMBUS, OH.

AM & SUN CIRC. 293,800

MAY-7-92

389

CURTAIN CALLS

Here is a guide to central Ohio theater shows, based on Dispatch reviews.

Big River — Director Larry Pfeil, Jr., choreographer Alice Mooney and scenic designer Philip Undercuffler miniaturize composer Roger Miller and author William Hauptman's 1985 Tony winner without diminishing its colorful scope. Geoff Callander's endearingly boyish Huck and Lloyd Lynk, Jr.'s mournfully mature Jim anchor this rascally tale of interracial friendship during the slavery era. **Spotlight Dinner Theatre.** (Reviewed by Michael Grossberg.)

Into the Woods — A big, broad, satisfying production of this challenging fairy tale for adults (and older children). Composer-lyricist Stephen Sondheim and dramatist-director James Lapine weave familiar stories into a funny, frightening lesson in moral responsibility. Under Dennis Romer's fine direction, there are no weak links in the large cast. **Otterbein College.** (Reviewed by Frank Gabrenya.)

Little Victories — Joan of Arc and Susan B. Anthony meet and forge a sisterly bond in Thurber House playwright Lavonne Mueller's imaginative feminist drama. Megan Freeman's radiantly strong Anthony and Kim Turney's resilient Joan share triumphs and tribulations with ribald wit and plaintive sweetness. **The OSU Theatre Company.** (M.G.)

Oil City Symphony — Word of mouth is exploding over this off-Broadway musical comedy revue's slap-happy stroll down memory lane. Mike Craver, Emily Mike-sell, Shawn Stengel and Klea Blackhurst perform such novelty numbers as *Old Timey Rock and Roll Home* and *Beaver Ban*. **Bug Club** with wide-eyed innocence. **Players Theatre Columbus.** (M.G.)

Relatively Speaking — Deft and daft and the best Alan Ayckbourn revival in Columbus since *Players Theatre Columbus' Woman in Mind*. Jonathan Putnam's Greg and Tracy Graham's Ginny are fine as dishonest live-in lovers; Philip C. Joseph Hietter and Lynne Roth wittily play the older couple. **Contemporary American Theatre Company.** (M.G.)

May 8, 1992

PAGE 6 — THE PUBLIC OPINION — WESTERVILLE, OHIO

Arts



Casting a spell

The forest Witch, played by Nancy Martin (right), casts a spell over the Baker, played by Bryan Brems (left), and his Wife, played by Mandy Fox (center), convincing them to collect a variety of fairy tale items when Otterbein College Theatre and Otterbein Department of Music present *Into the Woods* at 8 p.m. Thursday and Friday April 30 through May 3 in Cowan Hall, 30 N. Grove St. Tickets are \$10 and \$11 and to reserve tickets call 898-1109 between 1 and 4:30 p.m.

**OHIO
NEWS BUREAU INC.**
CLEVELAND, OHIO 44115
216/241-0675

THE GAZETTE
MEDINA, OH.
PM CIRC. 16,880

APR-28-92

City.

Fairy tale twist **389**

Kirsten Gasser will be brushing up her mean streak this week.

The 1989 Medina High School graduate will appear as Cinderella's step sister in Otterbein College Theatre's musical production of *Into the Woods*, which merges *Cinderella*, *Jack and the Beanstalk*, *Little Red Riding Hood* and *Rapunzel*.

The play, written by Stephen Sondheim and James Lapine, puts the fairy tales' characters together into a new tale about a childless couple — a baker and his wife — who have to achieve a number of tasks in order to have a baby.

Into the Woods will be performed in Cowan Hall on the Otterbein campus. Call (614) 898-1109 between 1 and 4:30 p.m. weekdays for ticket and performance information.

Gasser, an Otterbein junior majoring in music and business, is the daughter of Dr. and Mrs. John A. Gasser of Medina.

Sullivant Ave. Call the Kelton House at 464-2022.

Albert Collins—Blues; with the Icebreakers, doors open 7 pm, Newport Music Hall, 1722 N High St. Tickets \$10.75 advance, \$12 at door. 431-3600.

Conversations and Coffee— Featuring an Ohio Designer Craftsmen Artist, noon-1 pm, Cultural Arts Center, 139 W Main St. Free. 645-7047.

Into the Woods—Musical with familiar fairy tale characters, music by Stephen Sondheim and James Lapine, presented by Otterbein College Theatre, 7:30 pm, Cowan Hall, 30 N Grove St. Tickets \$10-\$11. Play runs thru 5/9. 898-1109.

Beate Klarsfeld, Nazi-hunter—Lecture, 7:30 pm, Ohio Union Ballroom, 1739 N High St. Free. 457-5080.

Little Victorles—Play about a

The Other Paper
Apr 30 - May 6, 1992