

INAUGURATION ISSUE

Welcome!

To a Bigger and
Better Otterbein

The Tan and Cardinal

Don't Miss a Hit

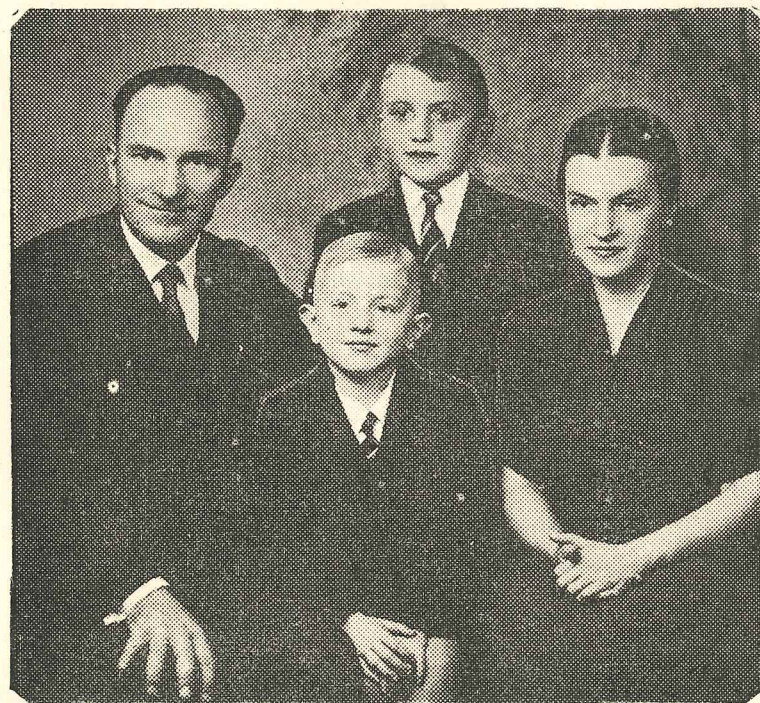
Peg O' My
Heart

VOL. XXII.

WESTERVILLE, OHIO, FRIDAY, NOVEMBER 3, 1939.

No. 4.

Dr. and Mrs. J. R. Howe Are Otterbein Graduates



Dr. Howe John R. Jr. Charles W. Mrs. Howe

Introducing John Ruskin Howe, '21, B.D., Ph.D., D.D., Mary Elizabeth Brewbaker Howe, '21, A.B., M.A., Charles W. '53, and Johnny R. Jr., '57, Otterbein's fourteenth president and family, in whose hands the destiny of the college now lies!

The Howes are "regular" and already have captivated the student body with their genuine interest in all things vital to campus life. With little more than four weeks in which to get acquainted "J. R." is now calling everyone by first name. Whenever the duties of the

game and has played ever since, this summer emerging as finalist in the Westerville Tournament which was won by Ray Pilkington '29.

Graduating from Otterbein in 1921, Dr. Howe continued his studies receiving the B.D. degree from Yale in 1924. Meanwhile, Miss Brewbaker had completed her A.B. at Otterbein and had done graduate work in Religious Education. In college she had been active in music, appearing in recitals on piano and organ and

CARDS MEET MARIETTA AT HOMECOMING

Coach Sights Several Improvements in His Team

With plans under way for a gala Homecoming celebration, Coach Selby and staff are preparing to pour on the steam for this week's Marietta game. Several improvements have been made which will strengthen both the offensive and defensive powers of the Cardinals. Nowl, a newcomer to the squad supplies a much needed reserve power in the backfield, while Weaston may be shifted to right end in order to cash in on his pass snaring ability. Either John Clippinger a consistent, hard charging junior, or Fred Strine, up from the backfield, will fill center position. Bob Cornell and Mark Coldiron will fill the guard booths while Ralph Reinor and Pringle will undoubtedly break into the game. The tackle positions will be filled by Meat-ball Wilson and Monroe Courtwright and at the ends Cover, Elliott, Weaston and Gould will see service. The backfield will be occupied by "Sticks" Henry, Fred Johns, Ted Neff, and Paul Caris with Nowl, Guillerman and Mann to relieve them.

DR. CLEMENTS SPONSORS SELF HELP PROJECT

Pennants Are on Sale to Raise Money for Board

Under the sponsorship of Dr. Clements, retired head of the research department of General Motors, and one of Otterbein's most successful sons, the Otterbein Students' Self Help Project reaches its first production period this week. The finished articles are two sizes of college pennants, with tan lettering and design on cardinal felt ground.

The pennants are produced by the Silk Screen Printing Process, in which paints of different colors may be impressed on any suitable material through a stencil on an impregnated silk diaphragm. Miss Elsbeth Walthers, head of the department of Fine Arts made the stencils, and the printing is the work of five students, Rudy Thomas, Bill Hinton, Harry Williams, Charley Kelley and Bill Polk. The Home Economics Department cooperated by sewing ribbons on the pennants.

Both sizes of pennants will be on sale to the Homecoming Alumni and to the students and friends of Otterbein throughout the festivities of the week-end. The members of the College Band are selling

Inauguration Attended By Many Representatives

Ceremonies To Be Broadcast From Church Over Columbus Station

Westerville will be host to more than 1,000 visitors from Ohio and neighboring states over the week end for the inauguration of Dr. J. Ruskin Howe as fourteenth president of Otterbein college and for the annual fall homecoming celebration. Many will come Saturday morning to hear Dr. Arthur H. Compton of the University of Chicago, Nobel prize winner and cosmic ray authority, give the inaugural address in the First United Brethren church.

More than 140 representatives of colleges and universities from coast to coast will march in the academic procession Saturday morning, starting at 9:45 a. m. from in front of the Administration building. The response has been greater than anticipated and there will be more delegates than at most inaugurations.

Prof. A. P. Rosselot will preside at the inaugural service in the college church at 10 a. m. Dr. A. T. Howard of Dayton, lifelong friend of Dr. Howe and president of Bonebrake Theological Seminary for a portion of the 13 years he was a professor at the Dayton school, will present the new president to Homer B. Kline of Edgewood, Pa., chairman of the board of trustees, following the inaugural address by Dr. Compton.

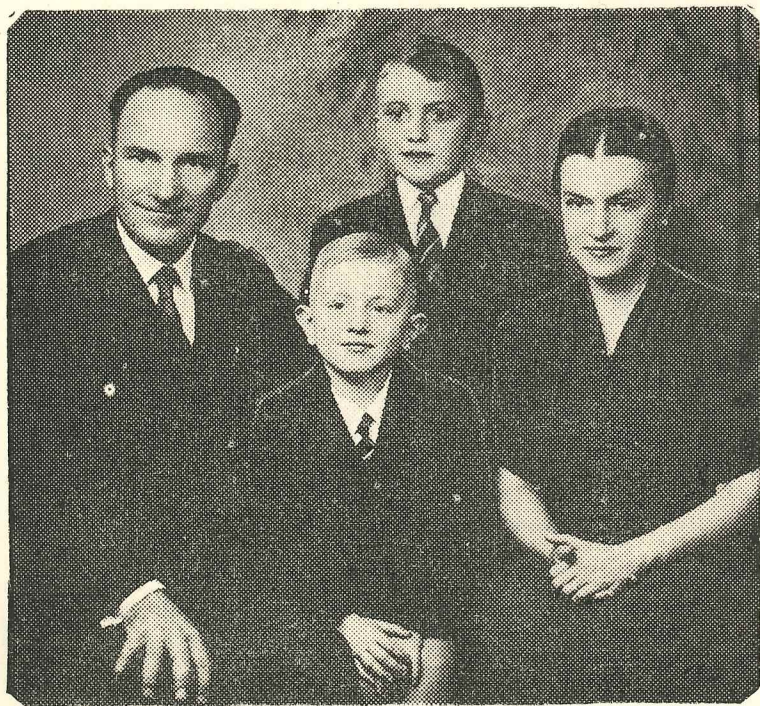
President Howe will deliver his inaugural address after the formal induction ceremony. The Otterbein college choir, directed by Prof. A. H. Anderson with Prof. C. C. G.

"Peg O' My Heart" Sponsored by Theta Alpha Phi

Otterbein's annual Homecoming play, which is sponsored by the Theta Alpha Phi, will be given at the Westerville High School this Saturday evening at eight-thirty o'clock.



Dr. and Mrs. J. R. Howe Are Otterbein Graduates



Dr. Howe John R. Jr. Charles W. Mrs. Howe

Introducing John Ruskin Howe, '21, B.D., Ph.D., D.D., Mary Elizabeth Brewbaker Howe, '21, A.B., M.A., Charles W. '53, and Johnny R. Jr., '57, Otterbein's fourteenth president and family, in whose hands the destiny of the college now lies!

The Howes are "regular" and already have captivated the student body with their genuine interest in all things vital to campus life. With little more than four weeks in which to get acquainted "J. R." is now calling everyone by first name. Whenever the duties of the office permit, he may be found out on the field watching football practice or in the gym playing handball. They are one of the "gang," and yet command the respect and esteem of faculty and students alike. One of their pleasures is to have students and other friends visit them in their home and share experiences and problems.

Dr. Howe was born in North Manchester, Indiana, where his father founded and served as first president of Manchester College. The family moved near Weston in northern Ohio where John later graduated from high school and spent four years teaching in a country school before entering Otterbein. War having been declared in the spring of his freshman year, Sergeant Howe spent fifteen months with the 83rd Ohio Division at the front in France. The war ended and the doughboy returned to Otterbein to resume his college work. Many were his activities and by the time he became a senior he had won letters in baseball and football, and captained the debate team three of his four years, thus earning the key of Pi Kappa Delta, national honorary forensic fraternity. As editor of the Tan and Cardinal, member of YMCA, Varsity O, Philomathean Literary Society, and as president of the very young Student Council, he, along with others, was instrumental in making possible a greater degree of self-government for the students and the long sought recognition and sanction of the college for the fraternities and sororities, previously sub-rosa campus organizations.

Armistice Day, 1920, has a special significance. For weeks Senior Howe had been casting an admiring eye toward Freshman Mary Elizabeth Brewbaker, talented daughter of Rev. and Mrs. C. W. Brewbaker of Dayton, but it was not until November 11 that he drummed up courage enough to ask for a date. Needless to say she accepted and with that first walk about the snowy streets of Westerville on Armistice night a new chapter of our story begins. "Betsy" was an ardent tennis player, so John Ruskin learned

the game and has played ever since, this summer emerging as finalist in the Westerville Tournament which was won by Ray Pilkington '29.

Graduating from Otterbein in 1921, Dr. Howe continued his studies receiving the B.D. degree from Yale in 1924. Meanwhile, Miss Brewbaker had completed her A.B. at Otterbein and had done graduate work in Religious Education. In college she had been active in music, appearing in recitals on piano and organ and being one of the first Otterbein students to broadcast programs. She was prominent in Y.W.C.A. and Philalethea Literary Society, and became the first president of the Tau Epsilon Mu, or Talisman, sorority, when it was organized in the spring of 1922, after being inactive since 1918.

On September 5, 1925, at Dayton, "J. R." and "Betsy" took their vows, honeymooning to Washington and New England where later they stood together to receive the Ph.D. and M. A. degrees from Yale University. From that time to the present year they have lived in Dayton where Dr. Howe has served as Professor of Systematic Theology and Philosophy of Religion in Bonebrake Theological Seminary. Mrs. Howe continues her interest in young people's work, serving at one time as National Children's Director for the United Brethren denomination. She has been a leader in the Leadership Training School of Dayton and regularly contributed to religious articles and publications. She held membership in the College Women's Club, the Dayton Sorosis and the Otterbein Alumni Club of Dayton. She also directed the Elementary Study Club. She joined the A.A.U.W. upon moving to Westerville. Dr. and Mrs. Howe were members of the exclusive Discussion and Nomad Clubs of Dayton, and in the summer of 1929 enjoyed a much-needed vacation motoring through Europe.

In 1935 "J. R." was honored with the degree of Doctor of Divinity by his Alma Mater. Through the years he has been busy in civic leadership, in youth camps and conventions and has remained active in athletics, playing regularly with the Seminary tennis and baseball teams and carrying off trophies in handball and squash racquets in the Dayton tournaments.

The Board of Trustees could not have made a better choice to succeed our honored retiring president. The future is indeed bright, and with the alumni's cooperation under "J. R.'s" personable and vital leadership, Otterbein will progress toward greater achievements.

1,000 Expected For How

CARDS MEET MARIETTA AT HOMECOMING

Coach Sights Several Improvements in His Team

With plans under way for a gala Homecoming celebration, Coach Selby and staff are preparing to pour on the steam for this week's Marietta game. Several improvements have been made which will strengthen both the offensive and defensive powers of the Cardinals. Nowl, a newcomer to the squad supplies a much needed reserve power in the backfield, while Weaston may be shifted to right end in order to cash in on his pass snaring ability. Either John Clippinger a consistent, hard charging junior, or Fred Strine, up from the backfield, will fill center position. Bob Cornell and Mark Coldiron will fill the guard booths while Ralph Beinor and Pringle will undoubtedly break into the game. The tackle positions will be filled by Meat-ball Wilson and Monroe Courtwright and at the ends Cover, Elliott, Weaston and Gould will see service. The backfield will be occupied by "Sticks" Henry, Fred Johns, Ted Neff, and Paul Caris with Nowl, Guillerman and Mann to relieve them.

With a large alumni invading Westerville for the week-end and pep rallies and pre-game celebration (Continued on Page Four)

Clippinger Elected Freshman President

The freshmen selected their permanent class officers Friday noon, October 27, in Professor Altman's classroom. Don Courtwright had charge of the meeting at which time the following officers were elected: president, Malcolm Clippinger, Roosevelt High School, Dayton; vice president, John Smith, Kiser High School, Dayton; secretary, Doty McArar, Waite High School, Toledo; treasurer, Ray Jennings, Sunbury High School; student council members, Ernestine Althoff, Arlington High School, Columbus, and Bill Hinton, Stivers High School, Dayton.

President's Home Dedicated In Impressive Ceremony

At 8:15 p. m. on October 27, Dr. and Mrs. Howe held a service of dedication of their home on Grove Street. All of the faculty members and wives were invited to share in the sacred dedication of their new home.

The first part of the program consisted of "Ave Maria", scripture reading, and a hymn of thanksgiving. Mrs. Howe discussed how things such as meaningful pictures, music, and books help to enrich the home. Dr. Howe then explained that even though things are not to be disregarded, hospitality obtained by personalities, those living in the home and friends, is the desirable quality.

The entire group joined in the words of dedication as follows:

On the campus of this college where the dreams of youth and the visions of maturity blend in the living experience of growth and knowledge

WE DEDICATE THIS HOME
Conscious of the crying needs of a confused and troubled day

DR. CLEMENTS SPONSORS SELF HELP PROJECT

Pennants Are on Sale to Raise Money for Board

Under the sponsorship of Dr. Clements, retired head of the research department of General Motors, and one of Otterbein's most successful sons, the Otterbein Students' Self Help Project reaches its first production period this week. The finished articles are two sizes of college pennants, with tan lettering and design on cardinal felt ground.

The pennants are produced by the Silk Screen Printing Process, in which paints of different colors may be impressed on any suitable material through a stencil on an impregnated silk diaphragm. Miss Elsbeth Walthers, head of the department of Fine Arts made the stencils, and the printing is the work of five students, Rudy Thomas, Bill Hinton, Harry Williams, Charley Kelley and Bill Polk. The Home Economics Department cooperated by sewing ribbons on the pennants.

Both sizes of pennants will be on sale to the Homecoming Alumni and to the students and friends of Otterbein throughout the festivities of the week-end. The members of the College Band are selling the pennants at a small commission to help raise money for necessary additions to the band. The prices represent a bargain for pennants (Continued on Page Four)

C. C. A. Budget Drive Goes Over Goal

"Over the top", may be the theme of certain European countries at the present time but it is also the victory cry of the Council of Christian Associations. Thanks to the united efforts of the students and faculty \$821.43 has been pledged and of that amount \$153.66 in cash has already been realized. This is almost twice as much as was pledged last year.

The budget of the C. C. A. was set at \$742.12. Since the band is to receive all money over and above the running expenses and budget, seems that the band will receive approximately \$60.

Radio Debate Set Between Otterbein and Ohio Northern

Two Otterbein College students will have a unique experience Saturday, November 1, when they will broadcast their debate on National Broadcasting Company's radio program goes on the air and lasts for 40 minutes.

Don Patterson, senior, and Long, sophomore, will represent Otterbein by upholding the active side on the question of isolation from the world.

The debate will be the first in a series of contests being held by the Columbus affiliate of the National Broadcasting Company.

The debates are being held in tournament style and winning teams will have the opportunity to debate to a national winner will be determined sometime in February.

Inauguration Many Rejoice

Ceremonies Church Over

Westerville will witness the inauguration of Dr. J. Ruskin Howe as president of Otterbein College and for many will come Saturday afternoon of the University of the Brethren church.

"Peg O' My Heart" Sponsored by Theta Alpha Phi

Otterbein's annual Homecoming play, which is sponsored by Theta Alpha Phi, will be given Saturday evening at 8 o'clock.



Clara Sharpley

It has been a tradition of Otterbein College to have a Homecoming play and Professor Smith, director of the play and professor of drama, has wisely chosen the "Peg O' My Heart", a delightful story of an Irish lass, Peg. The play was originally meant to be about thirty years ago but has been modernized and with the costuming and set design of today.

The two main characters in the play will be portrayed by Corbett (Jerry) and Clara Sharpley (Peg). Miss Sharpley has appeared in several other plays on the campus and has had a part in the production of "The Sign of the Cross" (Continued on Page Four)

Radio Debate Set Between Otterbein and Ohio Northern

Two Otterbein College students will have a unique experience Saturday, November 1, when they will broadcast their debate on National Broadcasting Company's radio program goes on the air and lasts for 40 minutes.

Don Patterson, senior, and Long, sophomore, will represent Otterbein by upholding the active side on the question of isolation from the world.

The debate will be the first in a series of contests being held by the Columbus affiliate of the National Broadcasting Company.

The debates are being held in tournament style and winning teams will have the opportunity to debate to a national winner will be determined sometime in February.

INAUGURATION ISSUE

The Tan and Cardinal

Don't Miss a Hit

Peg O' My
Heart

WESTERVILLE, OHIO, FRIDAY, NOVEMBER 3, 1939.

No. 4.

R. Howe
Graduates

1,000 Expected For Howe Inaugural

CARDS MEET MARIETTA AT HOMECOMING

Coach Sights Several Improvements in His Team

With plans under way for a gala Homecoming celebration, Coach Selby and staff are preparing to pour on the steam for this week's Marietta game. Several improvements have been made which will strengthen both the offensive and defensive powers of the Cardinals. Nowl, a newcomer to the squad supplies a much needed reserve power in the backfield, while Weaston may be shifted to right end in order to cash in on his pass snaring ability. Either John Clippinger, a consistent, hard charging junior, or Fred Strine, up from the backfield, will fill center position. Bob Cornell and Mark Coldiron will fill the guard booths while Ralph Beinor and Bringle will undoubtedly break into the game. The tackle positions will be filled by Meat-ball Wilson and Monroe Courtwright and at the ends Cover, Elliott, Weaston and Gould will see service. The backfield will be occupied by "Sticks" Henry, Fred Johns, Ted Neff, and Paul Caris with Nowl, Guillerman and Mann to relieve them.

With a large alumni invading Westerville for the week-end and pep rallies and pre-game celebration.

(Continued on Page Four)

Clippinger Elected Freshman President

The freshmen selected their permanent class officers Friday noon, October 27, in Professor Altman's classroom. Don Courtwright had charge of the meeting at which time the following officers were elected: president, Malcolm Clippinger, Roosevelt High School, Dayton; vice president, John Smith, Kiser High School, Dayton; secretary, Doty McArar, Waite High School, Toledo; treasurer, Ray Jennings, Sunbury High School; student council members, Ernestine Althoff, Arlington High School, Columbus, and Bill Hinton, Stivers High School, Dayton.

President's Home Dedicated In Impressive Ceremony

At 8:15 p. m. on October 27, Dr. and Mrs. Howe held a service of dedication of their home on Grove Street. All of the faculty members and wives were invited to share in the sacred dedication of their new home.

The first part of the program

DR. CLEMENTS SPONSORS SELF HELP PROJECT

Pennants Are on Sale to Raise Money for Board

Under the sponsorship of Dr. Clements, retired head of the research department of General Motors, and one of Otterbein's most successful sons, the Otterbein Students' Self Help Project reaches its first production period this week. The finished articles are two sizes of college pennants, with tan lettering and design on cardinal felt ground.

The pennants are produced by the Silk Screen Printing Process, in which paints of different colors may be impressed on any material through a stencil on an impregnated silk diaphragm. Miss Elsbeth Walther, head of the department of Fine Arts made the stencils, and the printing is the work of five students, Rudy Thomas, Bill Hinton, Harry Williams, Charley Kelley and Bill Polk. The Home Economics Department cooperated by sewing ribbons on the pennants.

Both sizes of pennants will be on sale to the Homecoming Alumni and to the students and friends of Otterbein throughout the festivities of the week-end. The members of the College Band are selling the pennants at a small commission to help raise money for necessary additions to the band. The prices represent a bargain for pennants.

(Continued on Page Four)

C. C. A. Budget Drive Goes Over Goal

"Over the top", may be the theme of certain European countries at the present time but it is also the victory cry of the Council of Christian Associations. Thanks to the united efforts of the students and faculty \$821.43 has been pledged and of that amount \$153.66 in cash has already been realized. This is almost twice as much as was pledged last year.

The budget of the C. C. A. was set at \$742.12. Since the band is to receive all money over and above the running expenses and budget, seems that the band will receive approximately \$60.

and confident of the powers of consecrated youth to build a better generation

WE DEDICATE THIS HOME

Grateful for the privilege of sharing in this thrilling drama of new world-building and eager for the fellowship of young lives

Inauguration Attended By Many Representatives

Ceremonies To Be Broadcast From Church Over Columbus Station

Westerville will be host to more than 1,000 visitors from Ohio and neighboring states over the week end for the inauguration of Dr. J. Ruskin Howe, fourth president of Otterbein college and for the annual fall homecoming celebration. Many will come Saturday morning to hear Dr. Arthur H. Compton of the University of Chicago, Nobel prize winner and cosmic ray authority, give the inaugural address in the First United Brethren church.

"Peg O' My Heart" Sponsored by Theta Alpha Phi

Otterbein's annual Homecoming play, which is sponsored by the Theta Alpha Phi, will be given at the Westerville High School this Saturday evening at eight-thirty o'clock.



Clara Sharpless

It has been a traditional custom of Otterbein College to present a Homecoming play and this year Professor Smith, director of the play and professor of dramatics, has wisely chosen the play "Peg O' My Heart", a delightful comedy of an Irish lass, Peg. The play was originally meant to take place about thirty years ago but it has been modernized and will be given with the costuming and background of today.

The two main characters of the play will be portrayed by James Corbett (Jerry) and Clara Sharpless (Peg). Miss Sharpless has appeared in several other plays on the campus and has had quite a lot

(Continued on Page Four)

Radio Debate Schedule Between Otterbein and Ohio Northern Univ.

Two Otterbein College debaters will have a unique experience next Saturday, November 11, when station WBNS in Columbus will

More than 140 representatives of colleges and universities from coast to coast will march in the academic procession Saturday morning, starting at 9:45 a. m. from in front of the Administration building. The response has been greater than anticipated and there will be more delegates than at most inaugurations.

Prof. A. P. Rosselot will preside at the inaugural service in the college church at 10 a. m. Dr. A. T. Howard of Dayton, lifelong friend of Dr. Howe and president of Bonebrake Theological Seminary for a portion of the 13 years he was a professor at the Dayton school, will present the new president to Homer B. Kline of Edgewood, Pa., chairman of the board of trustees, following the inaugural address by Dr. Compton.

President Howe will deliver his inaugural address after the formal induction ceremony. The Otterbein college choir, directed by Prof. A. K. Spessard, with Prof. G. G. Grabill, director of the Otterbein College Conservatory of Music as organist, will sing two numbers. The

(Continued on Page Four)

Talisman Sorority Wins Scholarship Cup for 1938-39

The members of Tau Epsilon Mu, Talisman, sorority have the honor of winning the inter-sorority scholarship cup for the year 1938-39, according to announcement made October 23, by the office of the registrar. The sorority led with a point average of 2.76 for the year. The cup was presented during a chapel exercise to the president, Mary Ellen Kraner.

Second place was won by Sigma Alpha Tau, Owl, sorority with a point average of 2.9.

For a number of years the sponsors of the sororities have been furnishing this scholarship cup which is a silver loving cup, to the sorority whose members make the highest scholastic rating each year. The cup is held during the year by the sorority winning it. If it is won three times in succession by the same sorority, it becomes the permanent possession of the group.

O O O

Sibyl Promotes Dance Saturday

The 1940 Sibyl staff is risking its

Coach

ast grid tilt of the current will as usual find the Cardi-
opposing their traditional
apital. This year the Luth-
too, have a new football
g staff, which is headed by
"Stubby" Davidson, former
nd Cap athlete. The as-
coach is none other than
turkey, whom many remem-
Cap's 1936-38 squads. The
attack is again built around
In the first three games
season the Lutherans com-
19 out of 34 passes.

Stock, junior halfback, has
well in the games Cap has
to date. In their opening
f Kenyon, 43-0, Stock ran
s he crossed the Kenyon
ur times. Once he dashed
s for a marker, and another
e was on the receiving end
f Pesek's passes. Pesek
no end of trouble to the
ast year, and is expected to
eal threat again this season.
s a rifle-like arm that is
in its accuracy.

Lutheran starting lineup
obably present these names:
ilman and Townley, ends;
and Wenzel, tackles; C.
n and Long, guards; Dis-
enter; and Elsass, Pesek,
our, and Stock in the back-
This group forms the nu-
f a team that defeated tough
g Green earlier in the sea-
6. Chuck Heilman is rep-
o be expert at deciphering
plays, as well as being a
ard. He and his fellow lines-
e finding it hard, though, to
shoes of last year's seniors,
rmed what has been called
ongest line in Cap's history.
ckfield is fast and slippery,
scription supposedly typi-
e whole team. Gus Goch-
is the hard-driving line
of this group. Others who
ost likely see service before
ernoon is over are Hamil-
un, Havel, and Herriot.

PERSONALITY COLORS



PHOENIX

ors to harmonize with
stume and individual-
Alluring... youthful!
TA-BLOOM for greater
auty... better wear.

79c - \$1.00

J. Norris & Son

State St. Westerville

North End Restaurant

DINNERS — LUNCHEONS

50 N. STATE ST.



BOB WILLIAMS

Back

Cards Play Marietta

(Continued from Page One)

tions the order of the day, an op-
timistic attitude has spread over
the campus. In the first rally of
the series, held in chapel Tuesday
night, President Howe expressed
the popular opinion that if Otter-
bein were to schedule athletic con-
tests we should make a creditable
showing, and that every one boost-
ed a winning team but only the
most loyal followed during defeat.
Hence, this week-end Otterbein
men are prepared to show their
loyalty.

Marietta will not be sold short
and Otterbein men have every re-
spect for their ability. During re-
lations with Marietta for the past
twenty-seven years in which games
were not played every year, Mari-
etta has won eight against Otter-
bein's two. This year's Marietta
aggregation presents a well balanc-
ed passing attack with two threats
in the backfield in the form of Wil-
liams at fullback, who does the
passing and McPeck a punter, who
has kept Marietta opposition in hot
water all season, playing right
half. Their line is light but strong
especially at the ends. Thus far
in the season, Marietta has won
three games against Rio Grande,
Fairmont, State Teachers, and
Denison, while dropping contests
to Muskingum and Capital. The
probable starting lineups will be as
follows:

Carlisle	L.E.	Cover
Howell	L.T.	Courtright
Arkle	L.G.	Cornell
Varnier	C.	Weaston
Siegfried	R.G.	Coldiron
Oyster	R.T.	Wilson
Clements	R.E.	Elliott
McPeck	Q.	Neff
Williams	L.H.	Henry
Krypwkowski	R.H.	Johns
Vosheski	F.	Caris

Ashland Defeats Otterbein in 18-0 Score

Playing on a soggy, snow-swept
field, Otterbein succumbed to the
highly touted Ashland passing at-
tack by a score of 18 to 0. Even
though handicapped by a fall in
temperature and periodical flurries
of snow, the Eagles passed to three
touchdowns before a small home-
coming crowd.

Otterbein's failure to solve this
aerial offense, made it possible for
Ashland to complete 14 out of 28
passes.

In the early minutes of the first
quarter, a pass from Embreus to
Dutka, who ran to the Otterbein
15, set the stage for the first score.
Two plays later, Dutka faded back
and completed a pass to Embreus
in the end zone. The try for the
extra point was short.

In the closing minutes of the
first half, Otterbein began a drive
from their own 10 to the Ashland
30, but were stopped when Snavelly
intercepted Henry's pass.

In the last half, the first snow of
the year covered the field and
both teams began a punting duel
with Neff of Otterbein and Plank
of Ashland getting off some fine
kicks in spite of the adverse weath-
er conditions. Late in the last
period, Weaston, intercepted Dut-
ka's pass. Otterbein then took the
offensive and began a passing at-
tack, but once again Ashland in-
tercepted. This time, after an ex-
change of punts, Dutka passed to
Scobey, who drove to the Otter-
bein four. On the next play
Embreus scored. The kick for ex-
tra point was blocked.

In the closing minutes of the
game, Dutka ran and passed his
way to the 26 where he tossed a
long pass to Slater for the final
score.

The Otterbein ends, Elliott and
Cover, played fine ball as did
Wilson and Weaston at tackle and
center respectively, which com-
pelled Ashland to take to the air,
eventually giving them a victory.

With passers such as Dutka and
Embreus and many fine receivers,
Ashland exhibited the finest pass-
ing attack. Otterbein men have
opposed this year.

O O O

Peg O' My Heart

(Continued from Page One)

of experience. However, this will
be the first leading role she has
had here.

The leads are supported by a
promising cast consisting of Vir-
ginia Jeremiah as Mrs. Chichester,
Peg's aunt; Robert Norris as Al-
ario, the son of Mrs. Chichester;
Rosemary McGee as Ethel, the
daughter of Mrs. Chichester; Mil-
fred Ater as Christian Brent, with
whom Evelyn is in love; Myron
Clark as Montgomery Hawkes;
Ben Gover as Jarvis, the butler,
and Mary Lou Healy as Bennett,
the maid.

With such a cast of characters,
and a delightful plot, the play can-
not help but be a success. The
cast and its managers have worked
long and hard and it is hoped that
there will be a large attendance.

O O O

u-m-m-M g-g-g-R-R

EAT 'EM UP!!!



C. HOWELL - CAPTAIN

Captain

Howe Inauguration

(Continued from Page One)

recessionary will end on the campus.

The inaugural program will be
broadcast from 10:30 to 11:30 a. m.
from station WHKC, Columbus.

Dr. Compton will arrive Satur-
day by plane from New York City,
following an address there.

Dr. E. B. Learish of Johnstown,
Pa., vice chairman of the board of
trustees, will offer the invocation
at the inaugural luncheon at noon
in the Alumni gymnasium. Mr.
Kline, as chairman of the board of
trustees, will preside. Greetings
from the church will be extended
by Bishop A. R. Clippinger of Day-
ton, bishop of the central area.
Others to extend greetings include,
E. N. Dietrich, director of the
State Department of Education;
Dr. A. A. Shaw, president of Deni-
son university, the Association of
American Colleges; Prof. Benjamin
T. Spencer of Ohio Wesleyan Uni-
versity, the Ohio College Associa-
tion; City Manager Ross E. Win-
dom, the village of Westerville;
Donald Patterson, Otterbein stu-
dent; Dr. Chas. R. Snavelly, senior
member, the Otterbein faculty;
Earl R. Hoover of Cleveland, Al-
umni association. President Howe
will give the response.

Following the football game,
President and Mrs. Howe will hold
a reception at the president's
house.

The annual Alumni banquet will
be held in the college church din-
ing room at 6:30 p. m., President
Earl R. Hoover presiding at the in-
formal program. The homecom-
ing play, "Peg 'O My Heart," will
be presented at 8:30 p. m. in the
Westerville high school auditorium
by the students of the speech de-
partment, Prof. J. F. Smith, direc-
tor.

Dr. Lyle J. Michael is chairman
of the committee arranging for a
reunion of the literary societies in
Philomathean hall at 10:30 p. m.
A typical program of days before
fraternities were organized on the
Otterbein campus will be presented
largely by non-group alumni.

W. L. SNYDER

EXPERT WATCH and
JEWELRY REPAIRING

36 N. State St. Westerville

Fowling Green Downs Cards In 26-6 Fray

A scrapping Otterbein eleven
scored its first touchdown for
1939 against a favored Bowling
Green team on October 21, but
went down to defeat by a score of
26-6. Bob Weaston intercepted a
B-G pass in midfield and ran the
ball back to the five-yard line,
from which point Sticks Henry
carried it over the goal. Although
the Cardinals were by far the
underdogs in the contest, they sur-
prised the Falcons with bursts of
power and their aggressiveness.
During the early periods they con-
stantly menaced the B-G attack
and goal, and it was anyone's
game.

Chuck Catanese plowed through
the line in the first quarter to
score the first Bowling Green
touchdown, and repeated this in the
third period. A pass, Brudzinski
to Mehlow, was good for the first
score, and in the fourth quarter
Ed Mussill, sub fullback, register-
ed the day's final score by gallop-
ing 35 yards for a six-pointer.

The game was marked by rough-
ness on both sides. Bowling
Green alone was penalized over 75
yards.

O O O

Clement's Student Project

(Continued from Page One)

of the quality offered, and the de-
mand is expected to be consider-
ably in excess of the supply.

Mrs. Clements, the genial wife
of the sponsor, herself a daughter
of Otterbein, tells how the pen-
nants nearly came not to be ready
for Homecoming. The first stencil,
produced after about fifteen
hours of work by Miss Walthers
was ruined when the apprentice
printers allowed the paint to dry
on it overnight after their first
trial. The efforts of Dr. Clements
to discover a suitable solvent proved
futile, and the spirits of the stu-
dents were low at the disappoint-
ment they had to suffer. Miss
Walthers, undaunted, came to the
rescue when she set to work and
produced a new and better stencil
in about two hours. Both Mr. and
Mrs. Clements think that she de-
serves most of the credit for the
timely success of this first venture.

The project will be run on non-
profit lines. The prices of the fin-
ished articles will barely take care
of the cost of production materials
and student labor, and a small
seller's commission. The number
of students who will benefit by the
project is expected to be increased
from the present five to over fifty

BISH'S BARBER SHOP

The College Men's Choice

J. B. Cornell 37 N. State St.

HOUGE'S

PLATE LUNCHEONS
SOUPS

14 S. STATE ST.

Prove
Last week
played in
Annex, the
ed Sphinx
the "Penns
eye from o
gers.

In the of
Country C
Sphinx 13-7
flashy fullba
in the thin
Kaps only
made most
passes and
only Ralph
ace plia Has

This week
played, on
This was p
far this seas
his "trick"
place and b
field. This
why Annex
however pla
up game an

The other
was played
Club, Jonar
26-8. Grab
Club made
ond quarter
the Clubbe
which rolle
counted for
Jonda's att
walt and A
many long
caught quit
Hanawalt k
every time
goal line.

The game
fair all wa
ing in the f
The stand

Jonda
Annex
Zeta Phi
Dubs
Country C

Chaucer Country

The regu
Chaucer clu
ran Hall eve
nesday even
The club
ent sections
books. The
was the So
United Stat
was the ac
evening, an
of the Soc
the guest
Hush spen
year in N
very well
about this
He was at
first quarter
Chapel Hill
Professor
vividly the
he saw the
then follow

when new
Illuminated
house num
will be amo
ned.

MEET

YOU

WILL

LUNCH