

# PUBLIC OPINION

## ABOUT AND FOR THE WESTERVILLE AREA

### Otterbein To Present Spoof of the 1920's

In keeping with Otterbein's 1961 Homecoming theme of "Best of Broadway," the Otterbein College Theatre will present "The Boy Friend" Oct. 26-27-28, Thursday through Saturday.

"The Boy Friend" is a gay, lighthearted spoof of the 1920's which ran in London and then on Broadway in 1953 and 1954. Capturing the essence of the Roaring Twenties' frivolous mannerisms, shimmering clothes and witty talk, the musical promises to be one of the highlights of the Homecoming festivities.

The "Best of Broadway" also will be displayed in the foyer of Cowan Hall, with pictures and playbills depicting Broadway's top shows of the 1960-61 season. The exhibit, prepared and designed by the American National Theatre and Academy, will go on display Monday, Oct. 23.

**WHEN THE CURTAIN** opens on "The Boy Friend," the scene uncovered is a sedate one, with Hortense the French maid talking on the telephone. The serenity of the scene lasts for perhaps 30 seconds, when squeals off-stage announce the arrival of four vivacious girls, Maisie, Dulcie, Fay and Nancy. Hortense admonishes them with, "Ave you forgotten who you are?"

"Les jeunes filles" immediately assume zany poses as they tell Hortense and the audience in song that they are "Perfect Young Ladies."

"The Boy Friend" continues in this gay mood throughout the entire production, with Charleston dances, madcap poses and lighthearted romance scenes.

**OTHER SONGS** IN the production include the title song, "The Boy Friend," "Won't You Charleston with Me?" "Fancy Forgetting," "I Could Be Happy with You," "Sur Le Plage," "A Room in Bloomsbury," "You Don't Want to Play with Me Blues," "Safety in Numbers," "The Riviera," "It's Never Too Late to Fall in Love" and "Poor Little Pierrette."

Playing leading roles in "The Boy Friend" are Miss Judy Stone as Madame Dubonnet, headmistress of an exclusive French finishing school; Miss Barbara Parker as Polly Browne, a poor little rich girl; Gordon Gregg as Percival Browne, Polly's widowed father; Jack Bryan as Tony Brockhurst. Also Miss Judy Hunt as Maisie, better known to her friends as Madcap Maisie; and John Soliday as Bobby Van Husen, Maisie's admirer. Also appearing in the production is Lloyd Lewis, an Otterbein graduate who is doing the choreography for "The Boy Friend". He will appear as Pepe, a carnival

dancer.

Phone reservations for "The Boy Friend" may be made by calling TU 2-3611 from 1 to 4:30 p.m. weekdays. Tickets also will be available at these same times at Cowan Hall box office.



### 'The Boy Friend' Chorus Strikes Arty Pose

Members of the chorus for the Otterbein College Theatre production of "The Boy Friend" include (from left) Mary Meek, 9899 N. State Rd.; Dave McCracken; Judy Hunt; John Soliday; Dean Mizer; Pat Riddel; Mike Doney; and Joyce Curmode. Miss Hunt and Soliday also have featured roles in the play.

# TAN AND CARDINAL

Student Publication Of Otterbein College

## College Theater to Present "The Boy Friend" Oct. 26-28

"We scheme about, and dream about, and we've been known to scream about—that certain thing called the Boy Friend," sing les jeunes filles in Otterbein College Theatre's first production of the year, "The Boy Friend."

Gay musical comedy, "The Boy Friend" will be presented in Otterbein's Cowan Hall theater on October 26-27-28. Produced under the co-sponsorship of the department of speech and music, the play is being directed by Professor Charles Dodrill, Director of Theatre. Professor Alan Bradley is musical director, Professor Richard Chamberlain is choral director, assisted by Professor Lee Shackson and former Otterbein student Lloyd Lewis who is being assisted by Miss Joanne VanSant is doing the choreography. Settings are designed by Professor Fred Thayer, Technical Director.

"The Boy Friend" is a light-hearted spoof of the 1920's, written by Sandy Wilson which was first produced in London in 1953. The following year it was brought to New York, where it opened to rave notices from the daily critics.

**SETTING FOR THE** play centers around the Villa Caprice, Madame Dubonnet's exclusive finishing school for young ladies, on the outskirts of Nice. Here flapper fashions, the Charleston dance and snappy songs spice the show in true Twenties style.

Heroine of "The Boy Friend" is Miss Polly Browne, who is afraid to fall in love for she fears the man will want only her money. She masquerades as a secretary when she meets rich Tony Brockhurst, who is pretending to be a poor delivery boy. Another love interest is between Madame Dubonnet and her old sweetheart—who happens to be Polly's widowed father. A chorus of young ladies and their beaux completes the cast.

Production features Miss Barbara Parker as Polly Browne, with Jack Bryan as Tony Brockhurst. Miss Judy Stone and Gordon Gregg take the parts of Madame Dubonnet and Polly's father, Perce-

vial Browne. Miss Judy Hunt is cast as Maisie, with John Soliday as her beau, Bobby Van Husen. Miss Sondra Spangler portrays the pert French maid, Hortense. Chorographer Lewis appears as Pepe.

**OTHERS IN THE** cast include Jim Bebee as Lord Brockhurst; Miss Carol Alban, Lady Brockhurst; Miss Joyce Curmode, Dulcie; Miss Mary Meek, Fay; Miss Pat Riddel, Nancy; Dave McCracken, Marcel; Dean Mizer, Pierre; Mike Doney, Alphonse and Miss Judy Wyatt, Lolita.

Season ticket sales for "The Boy Friend" and three other major Otterbein College Theatre productions are currently in progress. Remaining productions include "Tartuffe," "John Brown's Body" and "Death of a Salesman." Also included in the season ticket is admittance to four award-winning foreign films. Mail orders are now being filled at the Cowan Hall Box Office. Box office sales for "The Boy Friend" begin October 16. Phone inquiries may be made by calling TU2-3611 from 1:00 to 5:00 p.m. daily.

## 'Boy Friend' Tickets Go On Sale Monday

In the December, 1954, Theatre Arts magazine, drama critic Maurice Zolotov wrote: "The Boy Friend" is like no musical that has ever been or ever will be, and it is a pure delight from beginning to end."

Tickets go on sale Monday, Oct. 16, for the Otterbein College Theater revival of "The Boy Friend," to be presented Thursday through Saturday, October 26-27-28. The Cowan Hall Box Office will be open daily from 1 to 4:30 p.m. Phone reservations may be made by calling TU 2-3611.

A MUSICAL COMEDY spoof of the 1920's with 15 musical and production numbers, "The Boy Friend" is the first of four major

theater productions and four award-winning foreign films available to Westerville theatre-goers on the theatre's season ticket. Remaining productions include a "town and gown" presentation of "Tartuffe," "John Brown's Body" with a professional guest star, and "Death of a Salesman."

When first produced in New York in 1954, after a successful London run, "The Boy Friend" created such a sensation that Life, Time, Newsweek, The New Yorker, The Saturday Review and Theatre devoted several page stories with pictures which extravagantly praised the production.

SINCE 1954 "The Boy Friend"

frequently has been produced throughout the United States. Columbus theater-goers will recall the very successful production by the Player's Club and Stadium Theater in 1957, where the production broke box office records.

Unlike most modern musical comedies, "The Boy Friend" features one musical number after another. The entire cast sings, dances and acts. The action changes rapidly from one setting to another, and costume changes are even more frequent. Costumes have been rented for the production from a New York costume firm.



# 'Boy Friend' Rehearsal Series Of Stop And Go

By Sarah Skaates

What is a technical rehearsal? Well, technically speaking, it's just that—a chance for the people in charge of lights, props, sound effects, etc. to be sure they have everything in the right place at the right time.

As Chuck Dodrill, director of "The Boy Friend," sometimes instructs his cast, "If something isn't there when it should be, don't try to fake it and go on. Just yell 'I want my goodie!' and we'll stop everything until you get it."

(Continued on page 6-A)

## Ticket Status

Approximately 150 tickets remained for the Saturday performance of "The Boy Friend" at Cowan Hall, as of 5 p.m. Tuesday. Prof. Charles Dodrill, director of the Otterbein College Theater, said good tickets were still available for today's performance, and some could be had for the Friday show. The play will begin each night at 8:15 p.m.

## 'Boy Friend'

(Continued from Page 1-A)

Technical rehearsals are especially interesting if you aren't directly involved in the production and can sneak a seat somewhere between the directors. For instance let's look at Sunday night's technical run through of Otterbein Theater's "The Boy Friend," which will open today and run through Saturday, Oct. 28.

"THE BOY FRIEND," a spoof of English musical comedies of the twenties, opens with a gaggle of giggling girls posturing about the show's heroine, Polly Brown. The as yet unpainted doors on stage right open, and the headmistress of the school swoops in. The doors waver hesitantly behind her.

"Whoever opened those doors has got to close them right immediately!" booms Dodrill from his seat in the center of the auditorium. The doors snap shut.

A few moments later, one of the girls hunt for a missing

something or other and lifts the skirt of an elegant turquoise circular seat.

"FRED, THAT LEG has got to be painted," orders Dodrill again, and Technical Director Fred Thayer makes another note on his clipboard.

As the onstage action progresses, Polly's father, a very correct Englishman arrives at his daughter's school. His appearance is most imposing: tall erect, and very dignified, but dressed in dirty white sneakers, white athletic socks, and blue jeans rolled up about two inches above his ankles.

After some initial chit-chat, Mr. Brown and Mme. Dubonnet the headmistress remember they've met before under more romantic conditions, and get all set for a tender duet. Mme. Dubonnet gives an undulating hitch to her garments as she strikes a pose.

INSTANTLY THE Dodrill eagle eye detects a flow and the director dictates a note to his assistant for future discussion,



## In 'The Boy Friend' Cast

Included among those appearing in the cast of "The Boy Friend" are (from left) Barbara Packer, Gordon Gregg and Judy Stone. Miss Packer is Miss Polly Browne, heroine of the play; Gregg will portray her father, Percival Browne; and Miss Stone will be Madame Dubonnet, Mr. Browne's old sweetheart and currently head-mistress of Polly's school.

"Judy," hose first, then pull girle."

The duet is no more than half-way through when the Voice From the Auditorium yells "Cut it. Hold is right there. We can't see the leading lady."

At this point there takes place a three way conversation between Dodrill and Thayer, and Thayer by phone with the stage manager behind the curtain.

"WE'LL HAVE to use that hot spot, Fred," says Dodrill.

"Turn on that spot, Dick," relays Thayer; then "What do you mean you unplugged it?" To Dodrill, "They unplugged it."

Dodrill: "Well tell them to please re-plug it!" Chuckling good humoredly, "Good work, Lee!" Whoever Lee is!

And so it goes at a technical rehearsal. Sound like fun? Well it is, but no more fun than the play itself. When you go, and I hope you do, keep your eyes open to notice some of these little things, and you'll re-appreciate the detail involved in putting on any good show like "The Boy Friend."

Otterbein College Theatre

Presents

## "THE BOY FRIEND"

A Wild Musical Comedy of The 1920's

Thursday-Friday-Saturday Oct. 26-27-28  
COWAN HALL — Curtain Time 8:15 P.M.

Single Ticket, \$1.25 For Reservations Call TU 2-3611

SEASON TICKETS for all four major productions and the Foreign Film Series are still on sale at a 50% savings, \$4.00 for all 10 events.



## Cast Members Look at Exhibit

Examining part of the American National Theatre and Academy's Broadway play exhibit are (from left) Pat Ridel, Jack Eryan and Joyce Curmode. All three Otterbein students will appear in the OC homecoming production of "The Boy Friend."

# Broadway Play Exhibit Planned at Otterbein

Vivid pictures and playbills of approximately 60 Broadway shows will be on display Oct. 23-30 in the foyer of Cowan Hall on the Otterbein College campus. The exhibit will be held in conjunction with the Otterbein College Theatre 1961 Homecoming production of "The Boy Friend" on Oct. 26-27-28.

Prepared and designed by the American National Theatre and Academy, the attractive exhibit depicts Broadway's leading plays of the 1960-61 season.

Otterbein College Theatre, which became a member of ANTA this year, will receive similar informational and decorative exhibits for many of its future productions.

**ANTA IS AN** organization of theatre services, information and activities, Congressionally chartered and independently financed by its members and interested donors, dedicated "... to extend the living Theatre beyond its present limitations by bringing the best in the Theatre to every state in the Union."

In the history of the Congress of the United States, only a few Congressional charters have been granted to worthy organizations. This distinguished roster includes

only one organization devoted to the theatre arts: ANTA, the American National Theatre and Academy. The charter was granted in 1935.

During the seasons from 1946 to 1949, ANTA produced 25 new plays under the banner of the Experimental Theatre and the Invitational Series. Both unknown and established playwrights saw their scrips presented to enthusiastic audiences by the theatre's leading actors and directors. In April 1947, the Experimental Theatre received the Sidney Howard Memorial Award for its contribution to the theatre.

**IN ADDITION TO** the plays actually produced by ANTA, many foreign and American productions have been sponsored by the organization. These productions have included the United States tour of Basil Legothetidis modern Greek comedy company in 1957, and Shata Rao and the Dancers of India, also in 1957.

The service department offers photographic loans, a guest artist program, advisory service and script information and evaluation services, plus similar information. Offices of ANTA are located at 1545 Broadway in New York.

## 'The Boy Friend' Is Otterbein's 1st Play

"We scheme about and dream about, and we've been known to scream about—that certain thing called the Boy Friend," sing les jeunes filles in Otterbein College Theatre's first production of the year, "The Boy Friend."

A gay musical comedy, "The Boy Friend" will be presented in Otterbein's Cowan Hall Theatre Oct. 26, 27, 28. Produced under the co-sponsorship of the Departments of Speech and Music, the play is being directed by Prof. Charles Dodrill, Director of Theatre.

Prof. Alan Bradley is musical director; Prof. Richard Chamberlain is choral director, assisted by Prof. L. Lee Shackson and Otterbein graduate Lloyd Lewis is responsible for staging the musical and dance portions of the show, assisted by Prof. Joanne Van Sant. Settings have been designed by Prof. Fred Thayer, Technical Director.

**"THE BOY FRIEND"** is a light-hearted spoof of the 1920's, written by Sandy Wilson and first produced in London in 1953. The following year this musical was brought to New York, where it opened to rave review notices from the daily critics.

Setting for the play centers around the Villa Caprice, Madame Dubonnet's exclusive finishing school for young ladies, on the outskirts of Nice. Here flapper fashions, the Charleston dance and snappy songs spice the show in true Twenties style.

Heroine of "The Boy Friend" is Miss Polly Browne, a poor little rich girl who is afraid to fall in love for fear the man will want only her money. She masquerades as a secretary when she meets rich Tony Brockhurst, who is pretending to be a poor delivery boy.

**ANOTHER LOVE** interest is between Madame Dubonnet and her old sweetheart—who just happens to be Polly's widowed father. A musical chorus of young ladies and their beaux completes the setting.

The Otterbein cast features Miss Barbara Parker as Polly Browne, with Jack Bryan as

Tony Brockhurst. Miss Judy Stone portrays Madame Dubonnet and Gordon Gregg portrays Polly's father, Percival Browne. Miss Judy Hunt is cast as Maisie, with John Soliday as her beau, Bobby Van Husen. Miss Sonara Spangler portrays the pert French maid, Hortense. Dance instructor Lewis appears in the play as Pepe.

Others in the cast include Jim Bebee as Lord Brockhurst; Miss Carol Aisan, Lady Brockhurst; Miss Joyce Curmode, Dalcie; Miss Mary Meek, Fay; Miss Pat Ridel, Nancy; Dave M. Cracker, Marcel; Dean Mzer, Pierre; Mike Doney, Alphonse and Miss Judy Wyatt, Lolita.

**SEASON TICKET** sales for "The Boy Friend" and three other major Otterbein College Theatre productions are currently in progress. Remaining productions include "Tartuffe," "John Brown's Body" and "Death of a Salesman."

Also included in the season ticket is admittance to four award-winning films. Mail orders are now being filled at the Cowan Hall Box Office. Box office sales for "The Boy Friend" begin Monday, Oct. 16. Phone inquiries may be made by calling TU 2-3611 from 1-5 p. m. daily.



# Critic Turns Poet? In Otterbein Review

By Sarah Skaates

Breathes there a man  
with soul so dead  
Who didn't take it  
to his head  
To lose himself  
in sheer delight  
And see "The Boy Friend"  
one glad night?  
If such there be,  
then throw him out!  
Forsooth he is  
an utter lout,  
Or else perchance  
he then was ill  
And missed the show  
against his will.

Apologies are in order for the poetry (?) but Saturday night's performance of "The Boy Friend" by the Otterbein Theater seemed to merit something other than mere prose.

**SERIOUSLY, ANYONE** who didn't enjoy this gay musical take-off on the 1920's must have an underfed funnybone. The whole idea of the play is to take a poke at the stylized British musical comedies of two score years ago, and the results are most entertaining.

The Otterbein production couldn't have been any more polished, enthusiastic or well done. Under the capable direction of Charles Dodrill and the fine assistance of conductor Alan Bradley, designer-technical director Fred Thayer, choral director Richard Chamberlain, and choreographer Lloyd Lewis, smooth sailing was assured from the beginning.

Well cast from top to toe, "The Boy Friend" was particularly highlighted by the talents of Gordon Gregg, Judy Hunt and Judy Stone. Gregg's stuffy English millionaire was most properly and correctly caricatured.

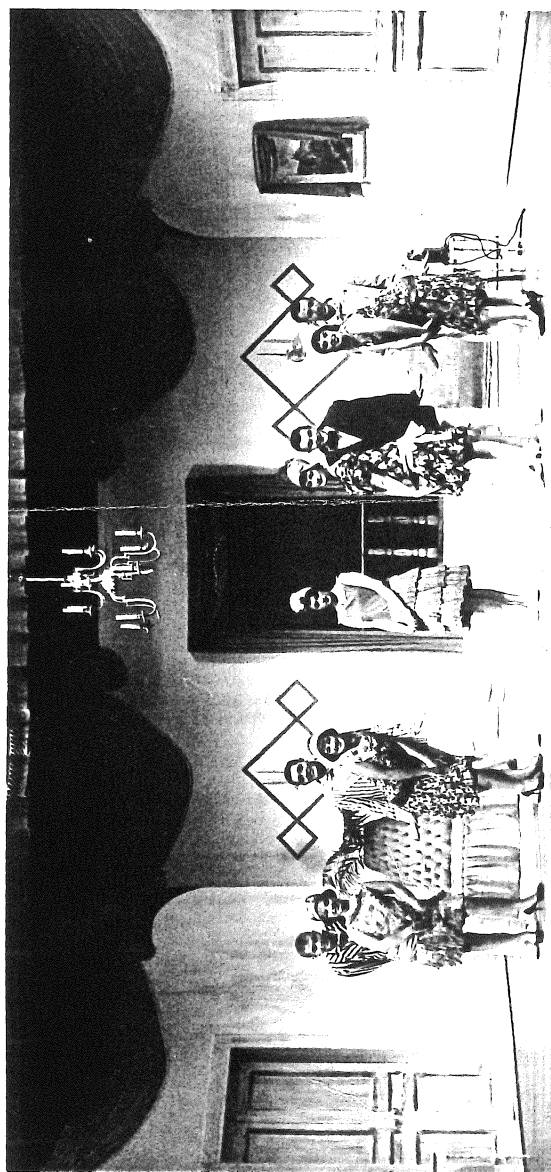
**MISS STONE SWEPT** through the role of the French head-mistress with just the right amount

of oomph, while Miss Hunt as one of her more animated pupils, mugged, minced and mimed her way into the audience's hearty approval.

Barbara Parker and Jack Bryan gave good account of the two young lovers. John Soliday, with probably his most important role to date, had a romp with the second romantic lead opposite Miss Hunt.

Providing more sparkle and zest to "The Boy Friend" were the imaginatively treated songs and dances. The title song and "Won't You Charleston With Me?" were danced with particular snap.

Put all these elements into fresh and colorful sets, add some costumes that could get laughs by themselves (on purpose, of course) and you'll begin to realize why "The Boy Friend" was such fun.



## Campus Reporter

Kaye Koontz

"Meet-the-Artist" coffee hour, held Tuesday afternoon in the "Sosh" Building lounge for Columbus artist John Wynne, got off to a rather late start.

The coffee hour was scheduled from 3:30 to 5:00, but guests sat around drinking soda and eating pretzels for an hour before the guests of honor arrived.

Wynne's exhibit, which will remain in the lounge until Sunday, October 22, features oil paintings, sketches and woodcuts.

Many of his oils, which are his latest works, display sharp contrasts in color. Artist Wynne explained to the assembled guests that he chooses complementary colors, such as red and green, blue and orange, for deliberate contrast. He stated that these combinations are preferable to other complementary colors since they are of equal value.

When asked why he deliberately works for sharp contrast, the artist explained that paintings on exhibit are comparable to commercial magazine displays—they are vying for attention and thus need the contrast. He added that were an individual painting the only one in sight, the sharp contrast would not be necessary.

Most of his paintings, Wynne said, were made from previous sketches or photographs. His wife is featured in many of them, and most of the scenes are taken from his home.

The works displayed in the Association Building will serve as a nucleus for a one-man art show in Dayton later in the year.

Even if you don't know all the fine points in painting, make an effort to stop in to see the exhibit. Available are copies of the paintings' titles for clarification.

Rehearsal for "The Boy Friend" is getting into full swing as first production date—Thursday, October 26—draws near. Promising to be the comic highlights of the show are Miss Judy Hunt as "Madcap" Maisie and John Soliday as her rich admirer, Bobby Van Husen. Especially delightful is their rendition of the Charleston.

"The Boy Friend," a musical comedy spoof of the 1920's, will be presented October 26, 27 and 28. It might be a good idea to get your tickets as soon as possible, since they are going fast. Saturday night tickets are disappearing most rapidly.

# OC Theater Europe Tour Set for '64

Word has just been received that the Otterbein College Theater production of "The Boy Friend" has been selected to tour overseas for four weeks in the spring of 1963. Application for the tour was made in November, 1961, immediately following the performance of "The Boy Friend" for Otterbein's Homecoming.

After consultation with college officials and faculty, Prof. Charles Dodrill, Director of Theater, asked if the tour could be delayed until the summer of 1963. Since that position was already filled, a decision to go in the spring of 1963 or wait until the summer of 1964 had to be made.

After assurance from officials in charge of scheduling, that the production could go in the summer of 1964 for seven weeks, the theater declined the 1963 invitation and is now making plans for a tour in the summer of 1964.

**APPROXIMATELY** eight colleges and universities are chosen yearly to entertain American soldiers overseas. Selection is made by the American Educational Theater Association Overseas Touring Committee and the USO Shows. Over 100 schools applied this year.

When asked how he felt about being chosen for this tour, Prof. Dodrill said: "It is quite an honor. Due credit must be given to the excellent directorial staff for our production, including Prof. Alan Bradley, conductor; Prof. Richard Chamberlain, choral director; Prof. Fred Thayer, designer, Lloyd Lewis, choreographer; Prof. Joanne Van Sant,

dancing master; and Dr. Lee Shackson, assistant choral director.

"We are proud to have been selected and we eagerly look forward to final confirmation of the tour in the summer of 1964."