



Featured in the Otterbein College Theatre cast of "Brecht on Brecht" are, from left: James Lewis, Michael Meizel, Connie Theokas, Barbara Immel, and Sharon Ruhly. Not pictured is James Anderson who completes the cast for the December 7-10 production.

College Theatre Production Four-Day Run Scheduled

Ticket sales are now open at the Cowan Box Office for the December 7 through 10 Otterbein College Theatre production of "Brecht on Brecht." Reservations may be made by phoning 882-3601 any weekday afternoon.

Drawn from Brecht's sayings, poems, songs and fragments from

his letters, essays and plays, "Brecht on Brecht" is filled with wry and slashing comments on the foibles of individuals and the organized insanities of the nations.

The Otterbein Theatre will offer five performances of Brecht's play, Wednesday through Saturday evenings beginning at 8:15 p.m., and a special Saturday matinee slated to begin at 2:00 p.m. All seats for the production, which will be staged in semi-arena theatre style, are reserved.

Faculty Music Recital

Four members of the Otterbein College Department of Music faculty will present a joint recital of chamber music featuring works by Beethoven and Milhaud

on Thursday, Dec. 8, at 8 p.m. in Hall Memorial Auditorium on the Otterbein Campus.

Appearing will be Catherine Gerhardt, 'cello; Ericka Smit-Vanrotte, piano; Alan Bradley, clarinet; and Anthony Ginter, violin. Although members of the group have appeared in concert numerous times, this is the first time they have appeared together in a joint concert.

PROGRAM

Sonata for 'cello and piano Op. 69 in A Major. ..Beethoven
Allegro ma non tanto

Scherzo
Adagio Cantabile
Allegro vivace

II

Trio for piano, clarinet and 'cello
Op. 11 in B flat Major. ..Beethoven

Allegro con brio
Adagio
Allegretto

III

Suite for violin, clarinet and piano. . . . Milhaud

Ouverture
Divertissement

Jeu
Introduction et Fina



OSU Aide Directs At



At Otterb

Otterbein College will play this Saturday to the 20th Annual Holiday Debate Tournament. 1946 the first Annual Holiday Debate Tournament was held at Otterbein with teams from sixteen colleges and universities participating. The tourney is now one of the largest in Ohio.

The tournament is especially significant this year as it is during the 60th Anniversary celebration of speech and theatre activity on the Westerville campus.

Dr. James Grissinger, Chairman of the Otterbein Department of Speech and Theatre, announced that college president, Lynn

COLUMBUS SUNDAY

DISPATCH

COLUMBUS, O.

Sun. - circ. 306,592

DEC. 4, 1966

389



OTTERBEIN

Featured in the Otterbein "Brecht on Brecht" are Michael Metzel, Connie T. Sharon Ruhly. Brecht's play is open at the Cowan Hall, Dec. 7, and run through Saturday. Tickets available by calling 882-3601.

COLUMBUS CITIZEN-

JOURNAL

COLUMBUS, O.

Sun. - circ. 117,360

DEC. 3, 1966

COLUMBUS

DISPATCH

COLUMBUS, O.

Sun. - circ. 306,592

DEC. 4, 1966



Featured in the Otterbein College Theatre cast of "Brecht on Brecht" are, from left: James Lewis, Michael Metzel, Connie Theokas, Barbara Immel, and Sharon Ruhly. Not pictured is James Anderson who completes the cast for the December 7-10 production.

College Theatre Production Four-Day Run Scheduled

Ticket sales are now open at the Cowan Box Office for the December 7 through 10 Otterbein College Theatre production of "Brecht on Brecht." Reservations may be made by phoning 882-3601 any weekday afternoon. Drawn from Brecht's sayings, poems, songs and fragments from

his letters, essays and plays, "Brecht on Brecht" is filled with wry and slashing comments on the foibles of individuals and the organized insanities of the nations. The Otterbein Theatre will offer five performances of Bre-

cht's play, Wednesday through Saturday evenings beginning at 8:15 p.m., and a special Saturday matinee slated to begin at 2:00 p.m. All seats for the production, which will be staged in semi-arena theatre style, are reserved.

Semi-Arena Production Of Brecht

The Otterbein College Theatre will present Bertold Brecht's famous anthology, "Brecht on Brecht," December 7-10 in semi-arena style on the Cowan Hall stage. Ticket sales for the show, which will be the first production of Brecht's anthology in Ohio, will open Monday, Nov. 28. Reservations may be made by phoning 882-3601 between 1 and 4 p.m. weekdays.

Only recently have Brecht's works gained popularity in the United States although they became something of a world-wide cult in the late 1950's elsewhere. Even Brecht's presence in this country from 1940 until 1947 failed to arouse interest in his plays. Only one of his plays, "The Private Life of the Master Race" was produced during that time. It ran for six performances in New York's City College auditorium.

"Brecht on Brecht" ran a full year in New York off-Broadway at the Theatre De Lys. In the summer of 1962 a London production was made that also was enthusiastically received, and productions soon followed in all major theatrical centers throughout the world. Today Bertold Brecht is acclaimed as one of the "most significant writers of the age."

Curtain Calls

By Fran Bay

Adieu To Brecht



Local theatre goers were served a slice of drama, a la Bertold Brecht last week, and that is not terribly easy to digest. It also is not terribly easy to serve, particularly for a young cast.

Brecht speaks of the great themes of this, or any age, but in words so eloquently simple, it is easy to begin saying the words without the understanding that gives them dramatic impact. The anthology, "Brecht on Brecht", speaks of birth and death, war and peace, bureaucracy and individualism, as well as education, prejudice, theatre, an almost endless list of the pressures and emotions that exert themselves on man. It is the story of man told through the eyes and thoughts of a poet.

Outstanding in his grasp of the subject matter and ability to project its feeling to the audience was James Lewis. Mr. Lewis conveyed a range of humor from wry to foppish in different selections. He was equally effective in serious monologue sections. Michael Metzel reacted as well as acted in both humorous and seriously emotional portions of the play. Sharon Ruhly seemed to show depth of understanding in brief selections early in the evening. The Jewish wife, however, which should be climac-

tic at the close of the second act, seemed to lack sensitivity.

The use of tapes of Brecht's voice and others who touched his life was less effective than it might have been. They were quite hard to understand, sheerly from a mechanical standpoint. Also it might have added to audience appreciation if the voices

had been identified somehow. For instance, it was too bad that most people didn't recognize the voice of Senator Fulbright in his monotonous "rendition" of Brecht poetry during House Un-American Activities Committee hearings in 1947. The knowledge might have added humorous impact to Brecht's taped avowal that he indeed had not written those words, but rather a German poem.

The starkness of the stage, set with just a platform, brick wall, straight chairs, and lecturn, puts terrific stress on the actors. Brecht was a man with much to say, but in this context it can only come across in mature and subjective acting and directing.



OTTERBEIN PRODUCTION

Featured in the Otterbein College Theater cast of "Brecht on Brecht" are, from left: James Lewis, Michael Metzel, Connie Theokas, Barbara Immel and Sharon Ruhly. Brecht's famous anthology is due to open at the Cowan Hall Auditorium this Wednesday, Dec. 7, and run through Saturday, Dec. 10. Tickets are available by calling 882-3601.

Theatre Premieres First Ohio Showing

In December the Otterbein College Theatre will present another "first" when they premier the initial Ohio production of "Brecht On Brecht." Just recently released from a hit run-off Broadway "Brecht on Brecht" has never before been produced in this state, and the Otterbein show will be one of the first

amateur productions permitted ever in this country.

Drawn from Bertoldt Brecht's sayings, poems, songs and fragments from his letters, "Brecht on Brecht" is described by Howard Taubman of the New York Times as "... filled with wry and slashing comments on the foibles of individuals and the organized insanities of nations. Its compassion for the unfortunate and the oppressed is never far from the surface, and it offers moments of searing poignancy."

Other plays scheduled for the 1966-67 season include "As You Like It," October 27-28-29; "Our Town" with professional guest artist, March 9-10-11; and "Brigadoon," May 11-12-13. Season ticket orders are currently being received by the Otterbein Theatre. Cost of season tickets covers admission price to the Foreign Film Series also. For information, phone 882-3601 weekday afternoons.

Hold Tryouts For "B On B"

Tryouts for the next Otterbein College Theatre production, *Brecht On Brecht*, will be held Tuesday and Wednesday, November 1 and 2, at 7:30 p.m. at Cowan Hall. All interested students are urged to attend the tryouts.

This production of the show will be an Ohio premiere. It is a reader's theatre production and will be staged arena style.

Richard Lorenzen, a graduate student at Ohio State University, will direct the play. Mr. Lorenzen received his BA degree from California State College at

Long Beach, his MA at Ohio State, and is currently working on his Ph.D.

He has had technical work in lighting, scene design, and scene construction at Cerritos Junior College and California State College. His acting experience includes roles in *Under Milkwood*, *J. B.*, *Romanoff and Juliet*, *Tea and Sympathy*, *Penny for a Song*, *Sunrise at Campobello*, and *Bus Stop*. Serving as an assistant director for *Irma La Douce* and *Long Day's Journey into Night*, he has fully directed *The Tenor* and *Miss Julie*.

Brecht On Brecht At College Theatre

Bertold Brecht, who died in 1956 at the age of 58, has come to be regarded as one of the most significant writers of the age.

The Cowan Hall Box Office will open Monday, November 28, for ticket sales to the Otterbein College Theatre production of his famous anthology, "Brecht on Brecht," scheduled for presentation December 7-8-9-10.

Though Brecht's plays became something of a world-wide cult in the late 1950's, in America they were more discussed for some years than acted on the stage -- partly for lack of adequate translations of his strangely individualized German vernacular; partly because of the cult-like deference in the approach to his work; partly out of rejection stemming from the despair on the surface of the plays, though they contain traces of very optimistic belief below the surface and from Brecht's avowed sympathy for Communism.

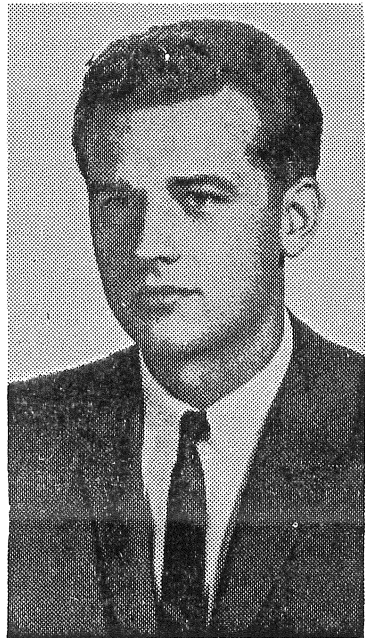
The Otterbein Theatre production will be the first in the state of Ohio for "Brecht on Brecht," and will be staged in semi-arena style on the Cowan Hall stage.

Brecht will probably be known in America chiefly for having written the original libretto of "The Threepenny Opera," the slashing sardonic opera that achieved the second longest run of any musical in New York stage history over the six years between 1955 and 1961, only a bit short of the record of "My Fair Lady."

When Hitler came to power in 1933, Brecht found it advisable to flee Germany. He spent the next seven years wandering through Austria, France, England, Denmark, Sweden and Finland, and finally came to the United States in 1940. He remained in this country for seven years until his return to East Germany in 1947.

Despite his prestige as a playwright, Brecht's presence in the United States resulted in only one of his plays being produced here -- "The Private Life of the Master Race" for six performances in New York's City College auditorium. Not until 1963 did a major Brecht play reach Broadway. That was "Mother Courage."

"Brecht on Brecht" ran a full year in New York in the off-Broadway Theatre De Lys. In the summer of 1962 a London production was made that also was enthusiastically received, and productions soon followed in all major theatrical centers throughout the world.



RICHARD L. LORENZEN

The Otterbein College Theatre announces that their December 7-10 production of "Brecht on Brecht" will be under the guest direction of Richard L. Lorenzen.

Mr. Lorenzen has had previous technical theatre experience in lighting, scene design and scene construction at the Cerritos Junior College and at California State College. He has had full directoral responsibility for productions of "The Tenor," and "Miss Julie," and assisted with the direction of "Irma La Douce," "Long Day's Journey into Night."

A teaching assistant at the Ohio State University, Mr. Lorenzen received his B.A. degree from the California State College at Long Beach, and his Master of Arts degree from Ohio State University, where he is currently working on his doctorate in theatre.

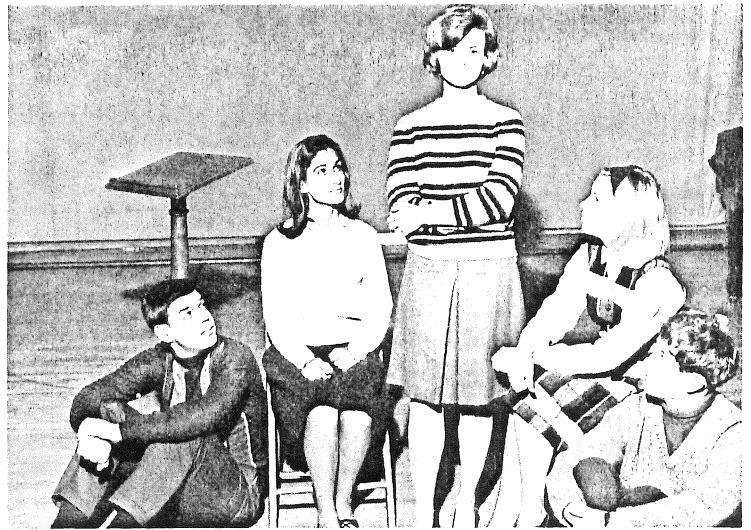
"Brecht On Brecht" Here Next Week

The Ohio premiere of "Brecht on Brecht" will be presented this coming week by the Otterbein College Theatre. The arena style production will be given Wednesday through Saturday, December 7 to 10, with a performance at 8:15 p.m. each evening and a matinee at 2:00 p.m. Saturday.

The ensemble of six actors will present a variety of readings from the works of Bertolt Brecht. The play will be done partially as a reader's theatre production, while other parts will be done without script.

Brecht was a Communist, and his writings concern the relationship between the Jewish and Communist peoples in Germany. One of the better known selections that will be done is "The Jewish Wife."

Tickets for the play are still available in the Cowan Hall Box Office from 1 to 4:30 p.m. daily. Students and faculty members may receive tickets by presenting their ID cards.



The cast for the reader's theatre production of "Brecht On Brecht" is ready; from left to right are Mike Metzel, Connie Theokas, Sharon Ruhly, Barb Immel, and Jim Lewis.

"Brecht on Brecht" Cast Announced

The Otterbein College Theatre announces that their December 7-10 production of "Brecht on Brecht" will be under the guest direction of Richard L. Lorenzen.

The Otterbein show, which will be the premiere production of the Brecht anthology in Ohio, will be staged in semi-arena theatre style.

A teaching assistant at the Ohio State University, Mr. Lorenzen received his B.A. degree from the California State College at Long Beach, and his Master of Arts degree from Ohio State University, where he is currently working on his doctorate in theatre.

Mr. Lorenzen has had previous technical theatre experience in lighting, scene design and scene construction at the Cerritos Junior College and at California State College. He has had full directoral responsibility for productions of "The Tenor," and "Miss Julie," and assisted with

the direction of "Irma La Douce," "Long Day's Journey into Night."

The cast for *Brecht on Brecht* has been chosen. The female roles will be played by Barb Immel, sophomore from Massillon; Sharon Ruhly, junior from Dayton and Connie Theokas, freshman from Needham, Mass. Jim Anderson, junior from Springfield; Jim Lewis, senior from Mansfield; and Mike Metzel, sophomore from Columbus, will play the male parts.

Richard Lorenzen, a graduate student at Ohio State, is directing the production. It is a reader's theatre play and will be staged in three-quarter arena style.

Tickets for this play will go on sale in the Cowan Hall Box Office on Monday, November 28, from 1:00 to 4:30 p.m. daily. Students and faculty members may receive tickets by presenting their ID cards.

Otterbein To Present 'Brecht'

The Otterbein College Theater will present another "first" in December when they premiere the initial Ohio production of "Brecht on Brecht." It recently was released from a hit run off-Broadway and on tour.

Drawn from Bertold Brecht's sayings, poems, songs and fragments from his letters, "Brecht on Brecht" is described by Howard Taubman in the New York Times as "... Filled with wry and slashing comments on the foibles of individuals and the organized insanities of nations. Its compassion for the unfortunate and the oppressed is never far from the surface and it offers moments of searing poignancy."

Other plays scheduled for the 1966-67 season include "As You Like It," Oct. 27-28-29; "Our Town" with professional guest artist, March 9-10-11; and "Brigadoon" May 11-12-13. Season ticket orders are currently being received by the Otterbein Theater. For information phone 882-3601.

First in Ohio By Amateurs

The Otterbein College Theater will become one of the first amateur theater groups in the country to produce "Brecht on Brecht" when they offer the show Dec. 7-10 as part of their 1966-67 theater season. Just recently released from a hit run off-Broadway and on tour, "Brecht on Brecht" has never been produced by any group in the state of Ohio and the

Otterbein production will be its premiere in this area.

Other plays scheduled for the 1966-67 season include "As You Like It," Oct. 27-28-29; "Our Town," with professional guest artist, March 9-10-11, and "Brigadoon" May 11-12-13. Season ticket orders are currently being received by the Otterbein Theater. Cost of season tickets also covers admission to the Foreign Film Series. For information phone 882-3601 any weekday afternoon.