

# Tan and Cardinal

## "Death Of A Salesman" Is May Day Selection

"Death of a Salesman," celebrated play of the modern theater, will be presented by the Otterbein College Theater, on Friday and Saturday, May 11 and 12 as one of the features of May Day at Otterbein.

Winner of the Pulitzer Prize and the Drama Critics Circle Award, "Death of a Salesman," opened February 10, 1949 and became the biggest hit on Broadway. The play has been produced around the world and aroused great controversy as to its status as a play.

Playwright Arthur Miller calls the play "a modern tragedy," a phrase often debated by theater critics. Miller also wrote "All My Sons," "A View From The Bridge," and the novel/movie, "The Misfits."

The plot of "Death of a Salesman" revolves around an aging salesman, Willy Loman, and his soul-searching as to where he has failed with his life and his family. Through a series of flash-backs revealing the past life he has lived with his wife, his sons, and business associates, the playwright dramatically unveils where and how he has failed to achieve success and happiness.

Willy Loman's story plainly involves a failure of values in the world around him. Willy accepts the denatured ideals of American society, particularly the over publicized ones. He naively succumbs to success-worship, to the belief that being "well-liked" is a substitute for solid accomplishment. Yet, after finally recognizing what he has done, Willy retains enough stature to recognize the folly of his acts and to want to do something to help his sons. Thus, his tragic act at the end raises the play above social criticism to where it may be called, "the greatest modern tragedy."

Professor Charles W. Dodrill, director of the play, states that the play is one of the most difficult we have ever attempted at Otterbein. The acting roles are very demanding for student actors. The play is characterized by extremely volatile emotional scenes which require careful planning and execution. One cannot read or see this play without getting deeply involved in the tragedy of Willy Loman and his family. We are proud to produce this great modern play for our students and local theater-goers."

## Setting Adds Depth To "Death of a Salesman"

The original Broadway setting for "Death of a Salesman" was designed by Jo Mielzinger, generally accepted to be Broadway's top designer. Pictured above as it appeared on closing night, Nov. 18, 1950, after 742 performances, the setting, production and script received numerous awards, including the Pulitzer Prize and the Drama Critics Circle Award.

"Death of a Salesman" will be brought to life again on Friday and Saturday, May 11 and 12, at 8:15 p.m. in Cowan Hall when the Otterbein College Theater will present this great "modern tragedy." Professor Charles Dodrill, Director of Theater, is directing the production and Professor Fred Thayer is designing the settings and lighting.

Westerville theatre-goers will witness a production and setting quite similar to the original. The strange, cut-away setting is necessitated by the flash-back action of the script. The Otterbein setting will include a fore-stage projecting into the orchestra pit, and a sloped kitchen floor that has the effect of projecting the action into the laps of the audience.

The plot of the play revolves around the efforts of an aging salesman, Willy Loman, and his efforts to achieve success by selling personality. Through a series of flash-backs the playwright reveals Willy's past life and his fruitless search for an ideal that does not exist. As the action flows from kitchen to upper bedroom to an imagined restaurant on the forestage, we are transported through several important incidents that can only lead to disaster.

In the face of this disaster, Willy, with the help of a rich brother, conjured up from the past, rises to the heights that any noble man should reach in an attempt to help his sons find themselves. Though this act is not understood by most, one son understands and grows in stature. Thus, "Death of a Salesman" can be called a great modern tragedy.

Tickets are now on sale at the Cowan Hall Box-Office daily from 1:00 to 4:30 p.m. Reservations may be made by calling TU 2-3611.

## "Death of a Salesman" Tickets

Tickets for the production will go on sale at the Cowan Hall Box office next Monday, April 30. Phone reservations may be made by calling TU-2-3611.

# Director Terms 'Death' Most Difficult OC Play

By Sarah Skaates

"Death of a Salesman", to be seen May 11-12 on the Cowan Hall stage, was in technical rehearsal Tuesday night when director Charles Dodrill discussed some of the problems connected with the production.

"I think I can say this is the most difficult play we've ever tried here," he said. "Death of a Salesman" is particularly challenging to student actors, Dodrill explained further, because it leaps 15 years forward or backward in time more than once.

Aside from the acting demands made by this Arthur Miller play, called by many the greatest of the modern dramas, the problems of technical coordination are staggering.

"YOU SEE, THE scene shifts from the present to the past, from reality to expressionism," Dodrill went on.

"Most of the time these changes are indicated just by lighting. We've tried to use warm lights for reality with lots of blue for the dream-like scenes."

As in many plays, there are problems of quick costume changes. In one of these, two actors must slip down unseen from the upstairs bedroom, change, and re-enter the set in 25 seconds.

TUESDAY NIGHT'S proceedings were halted temporarily when still another actor announced from the wings "I'm still in my shorts!" when his cue was given.

"This is a marvelously constructed play," was Dodrill's opinion. "And there is a great morality about it. It's about a man with a completely false set of values."

The director elaborated by citing the various arguments for and against classing "Death of a Salesman" as a tragedy. "I think now the only ones who refuse to call it that are the purists, and they argue that Willie Loman is not a noble character" even though his last act is a noble one."

THE STAGE SETTING itself helps establish the dual nature of the play. From the skeletal framework merely suggesting the shape and structure of the house, to the very down-to-earth furnishings, the visual aspects of the play seem to go along with the expressed mood.

Tickets for either the Friday or Saturday night performance still are available at the Cowan Hall box office. Reservations may be called in at 882-3611 from 1-4:30 p.m.

## Play Setting To Be Similar To Original

"Death of a Salesman" will be brought to life again Friday and Saturday, May 11-12, at 8:15 p.m. in Cowan Hall when the Otterbein College Theater will present this great "modern tragedy." Prof. Charles Dodrill, Director of Theater, is directing the production, and Prof. Fred Thayer is designing the settings and lighting.

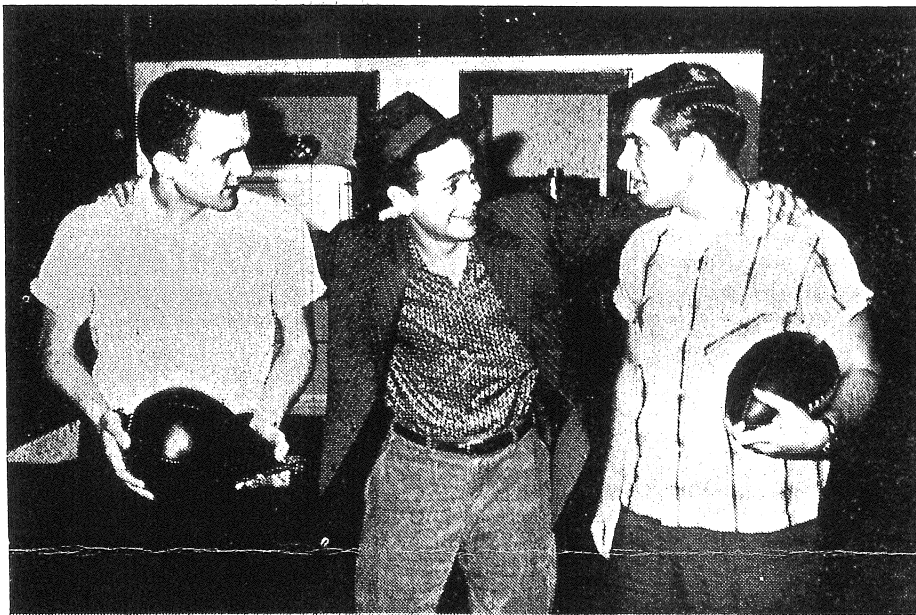
Westerville theatre-goers will witness a production and setting quite similar to the original. A strange, cut-away setting is necessitated by the flash-back action of the script. The Otterbein setting will include a fore-stage projecting into the orchestra pit, and a sloped kitchen floor that has the effect of projecting the action into the laps of the audience.

The plot of the play revolves around the life of an aging salesman, Willy Loman, and his efforts to achieve success by selling personality. Through a series of flash-backs the playwright reveals Willy's past life and his fruitless search for an ideal that does not exist.

AS THE ACTION flows from kitchen to upper bedroom to an imagined restaurant on the fore-stage, the audience is transported through several important incidents that can only lead to disaster.

In the face of this disaster, Loman, with the help of a rich brother conjured up from the past, rises to the heights that any noble man should reach in an attempt to help his sons find themselves. Through this act is not understood by most, one son understands and grows in stature.

Tickets are now on sale at the Cowan Hall box office daily from 1-4:30 p.m. Reservations may be made by calling 882-3611.



## Father Brings Gifts For Boys

An exuberant salesman brings home some presents for his boys in the Otterbein College Theatre production of "Death of a Salesman" to be given Saturday, May 11-12, at 8:15 p.m. in Cowan Hall. From left Happy (Richard Berry) looks at his father Willy Loman, (Richard Davis) who has eyes only for his star football player, Biff (Ron Ruble).



## "Death Of A Salesman" Opens

### Tonight Cowan Hall Stage

**Death of a Salesman**, the 1962 May Day play, opens tonight on Cowan Hall stage. This play, which is Arthur Miller's greatest, may well prove to be Otterbein's most outstanding dramatic production.

Aside from the cast, which Professor Charles Dodrill considers one of the most experienced he has ever directed, there are other notable features of the play.

Special music weaves the parts of the show together very effectively. The original show background music is being used in Otterbein's production. Because the music fits the length of speeches so well, it has been used throughout the earlier phases of rehearsals.

The play requires strenuous work on the part of the actor. One member of the cast feels that **Salesman** is the most difficult play in the English language because it requires an actor continually to move in and out of age transitions. These changes put great pressure on all the leading roles, especially for Richard Davis, who, as Willy Loman, must make his transitions while in full view of the audience. Indeed there is only one character who remains the same age throughout the entire play.

Director Dodrill has pulled together the large variety of required acting levels and united the dramatic situations which could seem disconnected. The long hours of rehearsal are evident in the smooth inter-action of characters.

There is much movement using the full stage area. The detailed set, designed by Professor Thayer, is on three levels. Even so, more acting space was needed. Don Porter and his construction crew made extra extensions for the stage.

Costumes are circa 1945.

The play, often considered the most powerful and popular contemporary American play, is included in all World Drama text books. Dramatic tensions build

intensely as scenes from the past turn into reality, then fade again into the past. Symbolism pertains to American values and standards and can be found as the plot drifts from Willy's conscious mind to his subconscious.

Combine all these elements, plus a sparkling cast and the excitement of the May Day Weekend, and you'll be sure to enjoy Otterbein's production of **Death of a Salesman**. (Curtain time 8:15!)

MAY, 11, 1962



Young, self-confident salesman Willy Loman (Dick Davis) tells admiring sons Hap and Biff (Dick Berry and Ron Ruble) about his big plans.

Photo by C. Moore



Wife Linda (Carol Alban) tries to calm the aging Willy and preserve family harmony in a crisis.

Photo by C. Moore

# 'Death of a Salesman' Scheduled on May Day

"Death of a Salesman," Arthur Miller's celebrated play of the modern theater, will be presented by the Otterbein College Theater, on Friday and Saturday, May 11-12, as one of the features of May Day at Otterbein.

Winner of the Pulitzer Prize and the Drama Critics Circle Award, "Death of a Salesman," opened February 10, 1949 and became the biggest hit on Broadway. The play has been produced around the world and aroused great controversy as to its dramatic status.

Author Arthur Miller calls the play "a modern tragedy," a phrase often debated by theater critics. Miller also wrote "All My Sons," "A View From The Bridge," and the novel-movie, "The Misfits."

**THE PLOT OF** "Death of a Salesman" revolves around an aging salesman, Willy Loman, and his soul-searching as to

where he has failed with his life and his family.

Through a series of flashbacks revealing the past life he has lived with his wife, his sons, and business associates, the playwright dramatically unveils where and how he has failed to achieve success and happiness.

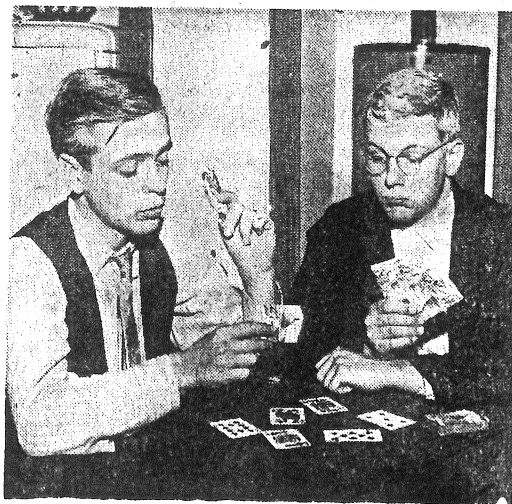
Willy Loman's story plainly involves a failure of values in the world around him. Willy accepts the denatured ideals of American society, particularly the over publicized ones. He naively succumbs to success-worship, to the belief that being "well-liked" is a substitute for solid accomplishment.

**YET, AFTER FINALLY** recognizing what he has done, Willy retains enough stature to recognize the folly of his acts and to want to do something to help his sons. Thus, his tragic act at the end raises the play above social criticism to where it may be called, "the greatest modern tragedy."

Prof. Charles W. Dodrill, director of the play, says "the play is one of the most difficult we have ever attempted at Otterbein. The acting roles are very demanding for student actors. The play is characterized by extremely volatile emotional scenes which require careful planning and execution.

"One cannot read or see this play without getting deeply involved in the tragedy of Willy Loman and his family. We are proud to produce this great modern play for our students and local theater-goers."

Tickets will go on sale at the box-office Monday April 30. Mail orders and season ticket exchanges are now being accepted.



## Stars Of Miller Drama

Richard Davis (left) plays Willy Loman and John Sateday plays Uncle Charlie, in the Otterbein College Theater production of Arthur Miller's Pulitzer Prize winning play, "Death of a Salesman," Friday and Saturday evenings in Cowan Hall on the Otterbein campus.

## Otterbein In Pulitzer Prize Play

The Otterbein College Theater will present Arthur Miller's Pulitzer Prize winning drama, "Death of a Salesman," this Friday and Saturday, May 11-12, at 8:15 p.m. in Cowan Hall on the Otterbein campus in Westerville.

Often called the greatest play of the modern theater, "Death of a Salesman" will feature senior student Richard Davis in the lead role of Willy Loman. Davis has appeared in numerous roles at Otterbein, including Sakini in "Teahouse of the August Moon," Drummond in "Inherit the Wind," Petruccio in "Taming of the Shrew," and Morgan in "Ten Nights in a Barroom."

The play is produced under the direction of Prof. Charles Dodrill, Director of Theatre, and Prof. Fred Thayer has designed setting and lighting.

Otterbein College Theatre

Presents

**"DEATH OF A SALESMAN"**  
TOMORROW AND SATURDAY

At 8:15 P.M.

Cowan Hall—Westerville

Tickets \$1.25. For Reservations Call  
TU. 2-3611 from 1 to 4 p.m. Daily



# Seniors Play Final Role In Last Play Of The Year

Five senior speech students will make their final appearance on the Cowan Hall stage in the May Day production of "Death of a Salesman" on May 11 and 12, announced director Charles Dodd-rill. The salesman hero of the play, Willy Loman, is portrayed by Richard Davis, a student participating in the distinction program.

He has appeared in several plays during the past three years, assuming leading roles in "Ah, Wilderness," "Taming of the Shrew," "The Dairy of Anne Frank," "Ten Nights in a Bar-room," "Teahouse of the August Moon," and "Inherit the Wind." During the 1961-62 season he directed "Tartuffe" and understudied Hans Conried in "John Brown's Body."

Ron Ruble, will appear as Biff Loman, the troubled eldest son of Willy, who recognizes his fault and rises about the tragedy. Ron has portrayed numerous roles in the past, including ones in "Taming of the Shrew," "Ten Nights in a Barroom," "Teahouse of the August Moon," and "Inherit the Wind."

Other seniors in the cast are John Soliday, Kaye Koontz, and James Beebee. Soliday, who will appear as Uncle Charlie, has played roles in "Taming of the Shrew," "Teahouse of the August Moon," "Inherit the Wind," and the second lead in "The Boy Friend." More recently, he directed the Children's Theater Production of "The Emperor's New Clothes," and his original script entitled "Somewhere Beyond," was recently produced.

Kaye Koontz, who recently directed John Soliday's "Somewhere Beyond," will appear as "the woman." Her past appear-

ances include roles in "Squaring the Circle," "Teahouse of the August Moon," and the lead role in "The Glass Menagerie."

James Beebee will portray Howard Wagner, the person immediately responsible for Willy Loman's downfall. He had the lead role in "King of Hearts" and appeared in "Inherit the Wind" and "The Emperor's New Clothes."

Remaining roles in "Death of a Salesman" feature Carol Alban, Linda Loman, wife of Willy; Jack Wright as the mysterious and rich Uncle Ben; Richard Berry as the effervescent and eternally confused youngest son, Happy Loman; Jack Bryan as the anemic youngster Bernard, who attains the success that Willy, Biff and Happy search for; Mike Doney as the impressed waiter; and Betty Smith and Pat Riddel as two women.



# Dodrill Announces Cast for Next Drama

When the Otterbein College Theater production of "Death of a Salesman" is presented on Friday and Saturday, May 11 and 12, several outstanding senior students will make their last appearance on the Cowan Hall stage.

In the cast announcement just released by director Charles Dodrill, five of the twelve roles are taken by seniors.

The salesman hero of the play, Willy Loman, is portrayed by Richard Davis, a distinction student. He has appeared in many plays during the past three years, assuming leading roles in "Ah, Wilderness," "Taming of the Shrew," "The Diary of Anne Frank."

Also "Ten Nights in a Bed-room," "Teahouse of the August Moon," and "Inherit the Wind." During the 1961-62 season he directed "Tartuffe" and understudied Hans Conried in "John Brown Body."

**ANOTHER SENIOR.** Ron Ruble, will appear as Biff Loman, the troubled eldest son of Willy, who recognizes his fault and rises above the tragedy.

He has created numerous roles in the past, including ones in "Taming of the Shrew," "Ten Nights in a Barroom," "Teahouse of the August Moon," and the inimitable creation of William Jennings Bryan in "Inherit the Wind."

Other seniors include John Soliday, Kaye Koontz and James Beebee. Soliday's past appearances include roles in "Taming of the Shrew," "Teahouse of the August Moon," "Inherit the Wind," and his zany characterization of an American "hep-cat" in "The Boy Friend."

**MORE RECENTLY,** he has directed the Children's Theater production of "The Emperor's New Clothes," and his original script entitled "Somewhere Beyond," was recently produced. John will appear as Uncle Charlie.

Kaye Koontz will appear as "the woman." Her past appearances include roles in "Squaring the Circle," "Teahouse of the August Moon," and the lead role in "The Glass Menagerie," also, she just finished directing Soliday's original script.

James Beebee will portray Howard Wagner, the person immediately responsible for Willy Loman's downfall. He had the lead role in "King of Hearts" and appeared in other productions, including "Inherit the Wind" and "The Emperor's New Clothes."

**REMAINING ROLES** in "Death of a Salesman" feature Carol Alban, Linda Loman, wife of Willy; Jack Wright as the mysterious and very rich Uncle Ben; Richard Berry as the effervescent and eternally confused youngest son, Happy Loman.

Jack Bryan as the anemic youngster, Bernard, who attains the success that Willy, Biff and Happy search for; Mike Doney as the impressed waiter; and Betty Smith and Pat Riddel as two women.

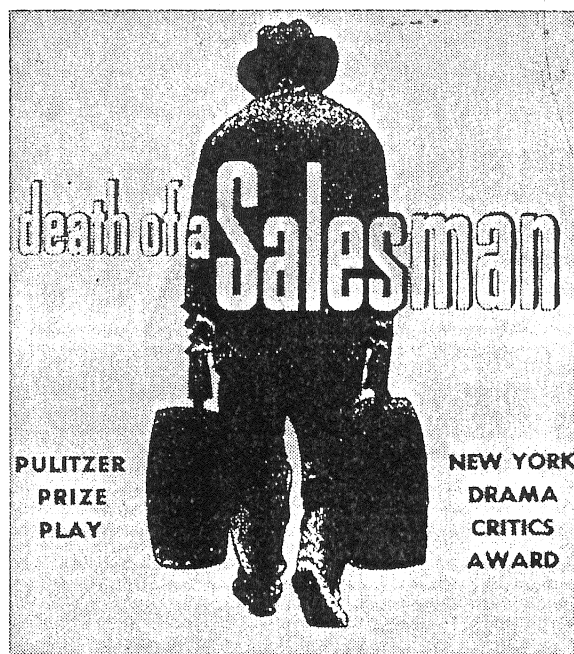
Tickets for the production will go on sale at the Cowan Hall box office Monday, April 30. Phone reservations may be made by calling TU 2-3611.



# PUBLIC OPINION

ABOUT AND FOR THE WESTERVILLE AREA

**OTTERBEIN  
COLLEGE THEATRE  
PRESENTS—**



**May 11th and 12th  
8:15 p.m., Cowan Hall**

**TICKETS  
\$1.25**

**FOR RESERVATIONS  
CALL TU 2-3611  
1 P.M. TO 4:30 P.M. DAILY**