



Nita Shannon, Bob Moore, and Mary Lou Poorman are shown discussing murder and motives in a scene from "The Bat."

Murder, Laughs Combined In Production Of 'The Bat'

By Nita Shannon

"When we've found the **motive** for this crime, we'll have found the **criminal**." Detective Anderson stared hard at Miss Van Gorder. Her niece, Dale, caught her breath.

What was the motive behind Richard Fleming's (Wayne Burt) death? Mr. Anderson discovered more motives for the murder than he could handle. And an overwhelming number of suspects.

The gardener (Bob Long) might have done it. Or was he really a gardener. . . ?

Dale (Nita Shannon) was the only person present at the murder. And she had a motive. . .

Dr. Wells (Duane Hopkins) appeared very opportunely. He said it was a professional call. . .

Lizzie (Sally Hall) was in her room, she said. No witnesses. . .

Billy (Bob Myers) was making coffee in the kitchen. Alone. . .

Reggie Beresford (Jim Gibson) was discovered prowling the grounds with a flashlight. But not till after the murder. . .

An unknown man (Jim Wagner) claimed he had amnesia. . .

A man (Ken Kohn) moving up the staircase before the murder. . .

And finally, Cornelia Van Gorder (Mary Lou Poorman) matching wits with Detective Anderson (Bob Moore), always "playing the detective."

But there is more than mystery to Avery Hopwood and Mary Roberts Rinehart's three-act play "The Bat." The dry humor of Cornelia Van Gorder and the flighty impossibility of her maid Lizzie, classify the show as a mystery-comedy.

Cap and Dagger will produce "The Bat" on Saturday, February 28. Curtain time is 8:15 p. m. Lloyd Lewis acts as director for the sixth annual student production.

Helen Herwick Added To "Who's Who" List

Helen Herwick, senior, has been included as one of Otterbein's choices for the 1953 edition of "Who's Who In American Colleges and Universities." Announcement of her honor was made earlier this week by the Student-Faculty Relations Committee.

Due to a slip-up in submitting names, Miss Herwick was omitted in the first "Who's Who" announcement. Student-Faculty Relations Committee emphasized that Miss Herwick's selection was really made this fall at the time of the other selections and, as such, accords her full honors.

A Capella, Glee Club S

Over 100 students will leave A Capella Choir and the Women's Glee Club on their annual tours. A Capella will tour the southern part of Ohio.

A Capella will give fifteen concerts next week. Beginning Sunday, the 45-voice choral group will sing in 15 communities before a combined audience of over 2,000 people.



Mystery, Comedy Combined In Scenes From "The Bat"

by Nita Shannon

Director Lloyd Lewis and his cast of 11 this week began putting the final touches on scenes from "The Bat," to be presented at 8:15 p. m. Saturday, February 28, in Cowan Hall. Written by Avery Hopwood and Mary Roberts Rinehart, the sixth annual student production is under the direction of

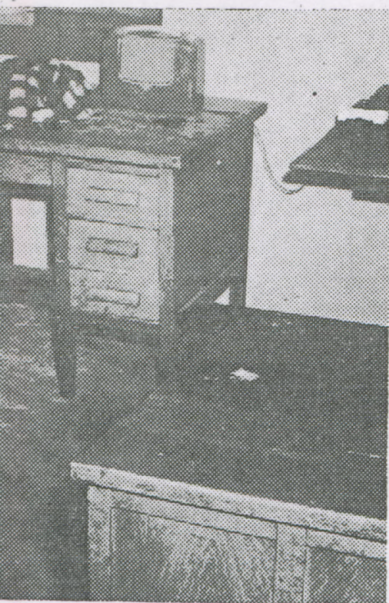
Cap and Dagger.

The mystery-comedy combines double murder with flickering lights, flashing lightning, and weird rappings to produce a show typical of the Mary Roberts Rinehart mystery-fiction style.

Cornelia Van Gorder, as enacted by Mary Lou Poorman, has rented Cedarcrest, a country house in which peculiar events threaten to disrupt the entire household. A detective (Bob Moore) is called to investigate, and he immediately suspects the frightened maid Lizzie (Sally Hall), the Japanese butler (Bob Myers), and Cornelia's niece (Nita Shannon). Bob Long, as the gardener, eventually becomes another object of distrust.

Directly involved in the ghostly activities of the house is a seemingly casual visitor, Dr. Wells, portrayed by Duane Hopkins, and Richard Fleming is made the unfortunate victim of a money-mad killer. Jim Gibson plays the part of Fleming's friend, Reggie Beresford. No immediate identification is furnished for an injured man (Jim Wagner) discovered on the grounds. The nocturnal visit which further frightens the household, already close to hysteria, is paid by Ken Kohn.

Has "New Look"



ent and new lighting fixtures in
ngement for the desks has also
e at front left is the sports edi-
business manager's desk, and at
One old T & C fixture is also
r shown working at the left.

Appropriate

'The Bat' Coming To Cowan Hall Boards

Director Lloyd Lewis Chooses Committees For Sixth Annual C & D Student Production

Director Lloyd Lewis has announced the appointment of nearly 50 students to production committees for "The Bat," Otterbein's sixth annual student production. The three-act mystery-comedy by Avery Hopwood and Mary Roberts Rinehart will be presented Saturday, February 25, at Cowan Hall. Rehearsals have been underway since Christmas vacation.

The Cap and Dagger production will be chiefly in the hands of committee chairmen under the leadership of business manager, Ken Kohn, stage manager, Roy Schutz, and technical director, Bob Dunham.

Lighting and ticket committees will be supervised by Jim Gibson, while Ken Fogelsanger heads the publicity group. Other committee chairmen are Nancy Carter, costumes; Dot Miles, programs; Dee Koons, make-up, and Helen Herwick, properties. Don Skelton will serve as house manager.

Arrangements for the traditional cast party will be made by Sally Bodge and Nancy Carter. Building and striking of sets, plus other technical backstage work, is being done by the stage craft class and Joe Shumway.

Three of the eleven-member cast are also working on production.

Besides their regular committee work, those assigned to production work are required to see at least one complete run-through of the show, and to be on hand for dress rehearsals and performances.

Glee Club Starts Tour

The Men's Glee Club begins its annual tour Sunday with a morning concert in Barberton, Ohio. From there the 30-man choral group, under the direction of Professor L. L. Shackson, will proceed through eastern Ohio and western Pennsylvania.

The Glee Club will return home Saturday, February 21.

Lloyd Lewis Announces Casting For "The Bat"

Cap and Dagger's annual student production will be cast Monday and Tuesday, December 15 and 16, newly-appointed director Lloyd Lewis announced Monday. Tryouts will be held at 4 p. m. on the Cowan Hall stage.

This year's presentation will feature eight men and three women in Mary Roberts Rinehart's and Avery Hopwood's "The Bat." In the mystery-comedy, suspense is the keynote; the murder is not revealed until the last few moments of the play.

Bob Dunham will assist Lewis with the technical direction and Ken Kohn will act as business manager. As yet the production committees have not been set up.

Curtain time for the three-act play will be at 8:15 p. m., Saturday, February 28, 1953.