

Otterbein Theater Department stages 'I Hate Hamlet'

"I Hate Hamlet" will be performed at Otterbein College Wednesday through Oct. 10 and Oct. 14-16 in Cowan Hall, 30 S. Grove St. on the Otterbein campus.

Andy Rally, played by Josh Gildrie, is an aspiring actor who agrees to play Hamlet even though he hates the play.

He rents an apartment haunted by the ghost of John Barrymore, an actor who was famous for his portrayal of Hamlet.

As Barrymore, played by Todd Crain, tries to tutor the young actor, the contrast between the two actors leads to arguments over women, art, success, duty, television and even the apartment.

The opening night performance will begin at 7:30 p.m. All other evening performances will be at 8 p.m., and the Sunday matinee will be at 2 p.m.

Tickets are \$9.50 for Friday and Saturday shows and \$8 for Wednesday, Thursday and Sunday shows.

Reserve tickets by calling the Otterbein College Theatre box office, 823-1109, between 1 and 4:30 p.m. weekdays.

Naylor enlists in U.S. Army

Michael T. Naylor, a 1992 graduate of Westerville North High School, recently enlisted in the U.S. Army for a four-year tour of duty as an M1 armor crewman.

Naylor reported for active duty on Sept. 9 at Fort Knox, Ky., for his basic and advanced military training.

Sgt. Sandra F. Lott of the Columbus North Recruiting Station assisted Naylor in his enlistment.

Historical center offers classes

The Ohio Village and Ohio Historical Center, Interstate 71 and 17th Av-

enue, will offer an autumn series of children's workshops on Saturday and on Nov. 13.

The Saturday workshop, "A Farmhouse Autumn," slated from 10 a.m. to noon in the Ohio Village, invites participants to don period costumes and become members of the village community.

Participants will help village interpreter Chris Matheny perform seasonal chores, including making apple cider, cutting and shelling corn and gathering and splitting firewood.

The program is suitable for children ages 10-12 years.

From 1-2 p.m., children ages 5-7 years will learn about Ohio's woodland creatures during the "Autumn Treats for Birds and Animals" workshop at the Ohio Historical Center.

Participants will make treats to take home to creatures found in their own backyards.

"Gingerbread Houses and Cookie Cottages," slated Nov. 13 at the Ohio Village, invites visitors ages 8-10 years to roll up their sleeves as they learn the art of gingerbread house construction.

Saturday's workshops will cost \$6 for members and \$8 for nonmembers.

The cost for the Nov. 13 workshop is \$8 for members and \$10 for nonmembers.

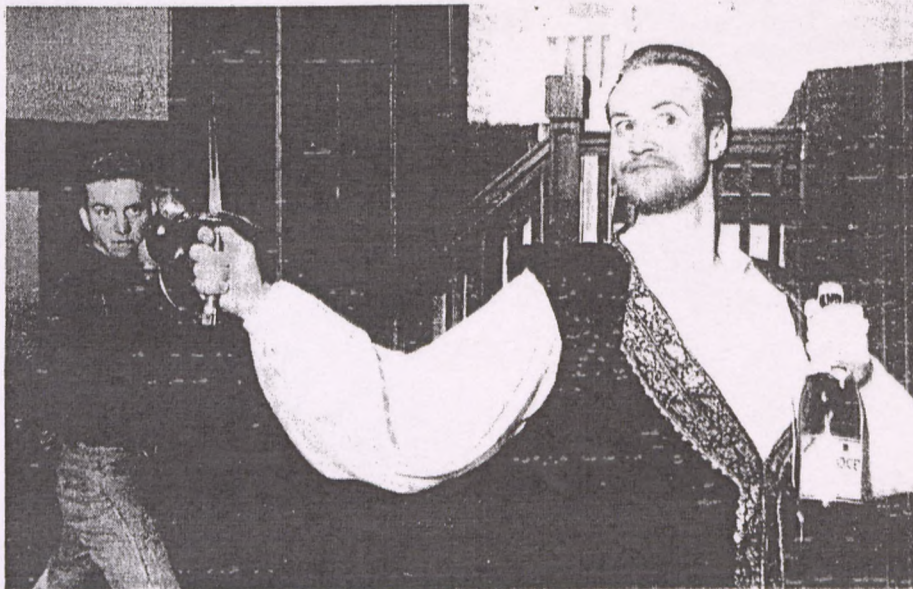
All workshops require preregistration.

To register or for more information, call 297-2606 or 1-800-686-1541.

DeVry awards scholarships

DeVry Institutes will award nearly \$2 million to 1994 high school graduates by offering 30 full-tuition scholarships and 90 half-tuition scholarships.

Each full-tuition scholarship, valued at up to \$26,460, and each half-tu-



Otterbein College students Josh Gildrie, who plays Andy Rally in the upcoming production of "I Hate Hamlet," and Todd Crain, who plays John Barrymore, practice their dueling skills. The play opens Wednesday in Cowan Hall on the Otterbein campus. For ticket information, call the theater box office, 823-1109.

ition scholarship, valued at up to \$13,230, may be used for application fees and tuition toward a bachelor's degree program in electronics engineering technology, computer information systems, business operations, telecommunications management, accounting or toward the electronics technician associate degree program.

Scholarship applications are available at any institute's admissions office and must be submitted by March 21, 1994. Not all programs are offered at each institute.

Finalists for the scholarships will be determined based on their competitive performance on the ACT or SAT, high school academic achievement, ex-

tracurricular activities and an essay.

Winners of the scholarships will be publicly announced in May 1994.

"DeVry has always been committed to excellence in academics," said DeVry Inc. Chairman Dennis Keller. "And awarding scholarships to successful high school students is one way of fulfilling that commitment. In fact, we have expanded the scholarship program to now include 32 community and junior college scholarships as well."

"The demand for career-oriented technology-based education programs like DeVry's is expected to dramatically increase in the 90s," Keller said. "With such growth, DeVry is well-positioned, as one of the largest pri-

ivate degree-granting, postsecondary education systems in North America, to help students prepare for the future."

The number of scholarships granted by each DeVry Institute will be determined by the number of applications received by that school. Each campus will have the opportunity to award at least one scholarship to an outstanding student from the area.

All 1994 high school graduates are eligible, with the exception of immediate family members of DeVry employees.

For further information, students should contact their high school guidance counselor or write to the office of admissions at DeVry.

Hamlet spin-off opens fall season

By Stacie Klish

The second performance of Paul Rudnick's lighthearted, yet quirky comedy, "I Hate Hamlet," will light up the stage in Cowan Hall tonight.

The mysterious comedy focuses on a television actor from Los Angeles named Andrew Rally who was offered the opportunity to play Hamlet onstage in Central Park.

Rally is hesitant about playing the part, for he has had no previous stage experience, and more importantly, he hates Hamlet. However, because Hamlet is considered to be one of the most challenging and sought-after roles in theater, Rally convinces himself to take it.

"There are a great number of people who obviously don't appreciate Shakespeare; they don't like being in the audience when they're watching a Shakespeare production," said Romer, "I think the opening show should be a comedy in the sense that we're starting a new season. It's nice to start on a comedic note. It's proved to work for us the last couple of years."

Coincidentally, Rally's new apartment in New York City is the same apartment actor John Barrymore once lived in. The plot thickens as the ghost of John Barrymore begins appearing and teaching the young actor not only how to play Hamlet, but how to seduce his girlfriend as well.

John Barrymore was especially well-known for his portrayal of Hamlet and appeared in a collection of various movies around the 1900s to 1940s. Barrymore's influence changes Rally's entire lifestyle.

A suspenseful and unexpected ending is presented as Rally decides whether to stay with the theater or accept a \$3 million television offer.

"It's a theatrical piece; it pokes fun at all the conventions of theater. It takes hotshots, agents, producers, actors, and it certainly expresses an opinion about the difference between the New York theater scene and the

Los Angeles Hollywood scene. Mostly, it's a tribute to theater; it's a pretty loving portrayal of the business," Romer added.

Senior Todd Crain, who plays Barrymore, said, "The entire cast has put their hearts and souls into each moment of this show. And once the set and costumes are all set, along with the make-up, we start breathing life into the characters."

"The role was difficult from the standpoint that I had to make sure that all of my thoughts and actions had to be within the parameters of who John Barrymore actually was. After a while, I just let it happen naturally. . . that's what Barrymore did," he added.

Ironically, Crain also played the likeness of John Barrymore in last year's performance of the "Royal Family," which was based on the lives of the Barrymore family.

The role of Andrew Rally is being performed by junior Josh Gildrie. "It's been a wonderful experience as far as working with the cast," said Gildrie, "It's kind of like a family. It's a lot of fun."

Other cast members include Jenny Stratton as Rally's girlfriend, Diedre, Katherine Smart as Felicia, Karlie Mossman as Lillian, and Thomas Sheridan as Gary.

Tickets are free to faculty/staff and full-time students with I.D. The box office, located in the lobby of Cowan Hall, is open weekdays from 1 p.m. to 4:30 p.m. and one hour prior to all performances. Showtimes begin at 8 p.m. each night from October 7th through the 9th and from October 14th through the 16th. The performance on Sunday, October 10 is at 2 p.m.



Todd Crain and Josh Gildrie star in "I Hate Hamlet." Otterbein publicity photo

Scenery gives life to 'Hamlet'

By Stacie Klish

Rob Johnson, set designer for the upcoming production of "I Hate Hamlet," along with Rob Shaffer, technical director, have been working together with approximately 20 students since summer to help bring the stage to life for early October.

Drawings of the set were designed by Johnson using a computer program.

The computer drawings depict exactly what the set will look like when finished and enable Johnson to create a small three-dimensional model of the set which provides the director with a general idea of the finished product.

For most productions, the designing takes approximately one month to complete.

The actual construction can require anywhere from 4-6 weeks. Shaffer and assistant technical director, Fred Smith, are responsible for finding the easiest and most economical way to construct the set.

This particular play will take place in a present-day New York loft with the set comprised mostly of wood and styrofoam that will resemble wood. Props were gathered from a number of places.

A company in Michigan is manufacturing an elaborate cornice (the top decorative part of the walls) made with blue Styrofoam. Many of the wall ornaments were purchased at a nearby flea-market. An estimated \$3,500 is being spent on the

entire creation.

Johnson, along with new faculty member Dana White, are working together to produce a number of special effects which will include a sudden burst of flames in the fireplace and some lighting effects.

Some of the students who have been highly involved with the set for "I Hate Hamlet" include Josh Allen, master carpenter, Meg Hassler and Paul Marr, master painters, Tamara Sommerfield, master electrician, Rob Holland, assistant lighting designer, Bill Cecil, assistant technical director, Kathy Brandt, props master, Katie Robbins, costume designer and Seth Reinick, wardrobe master.

"I just think our students are really wonderful," said Johnson, "They're great people to work with. We do a very professional job, and it's just amazing that a lot of it is due to the students and their drive and willingness to be professional."

Unfortunately, after the final perfor-



Sophomore Robin Myers, stains molding for the set of "I Hate Hamlet" in the theater scene shop. Photo by Kris Gross

mance the hard work will disappear. With little storage space available, the crew will salvage materials and donate them to local high schools.

4



We'll hope that nothing so extratextual occurs in Otterbein's Cowan Hall, 30 S. Grove St. in Westerville, when Todd Crain's Barrymore and Josh Gildrie's Rally go at it. Director Dennis Romer is sure to keep things under control. Performances are at 7:30 p.m. on October 6; 8 p.m. on October 7, 8, 9, 14, 15, and 16; and 2 p.m. on October 10. Call 823-1109 for tickets and information. Tickets for Players' *Phantom* can be exchanged for *I Hate Hamlet* ducats. Otterbein is also

**OHIO
NEWS BUREAU INC.**

CLEVELAND, OHIO 44115
216/241-0675

COLUMBUS DISPATCH
COLUMBUS, OH.
AM CIRC. 315,427

SEPT-20-93

THE LIVELY ARTS

Arts Editor: Michele Toney,
461-5075

389

THEATER

Otterbein to honor Players' tickets

Otterbein College Theater has joined arts groups extending offers to Players Theatre Columbus ticketholders. Otterbein will honor any ticket to Players' *Phantom* at any performance of its upcoming production of *I Hate Hamlet*, which opens Oct. 6 and runs through Oct. 16 at Cowan Hall, 30 S. Grove St., on the Westerville campus. For further information, call 823-1754.

The Columbus Arts Marketing Council is compiling a comprehensive list of ticket exchange offers from more than 20 arts groups. Detailed information will be mailed to Players Theatre subscribers on Wednesday.

"The Columbus arts community is rallying to express its concern for and goodwill toward Players Theatre ticket holders," said Julie Graber, council co-chair. "We hope these ticketholders will take advantage of the many arts performances and activities these organizations are making available."

For further information, call Graber at 291-4445.

DANCE

BalletMet turns to the dogs

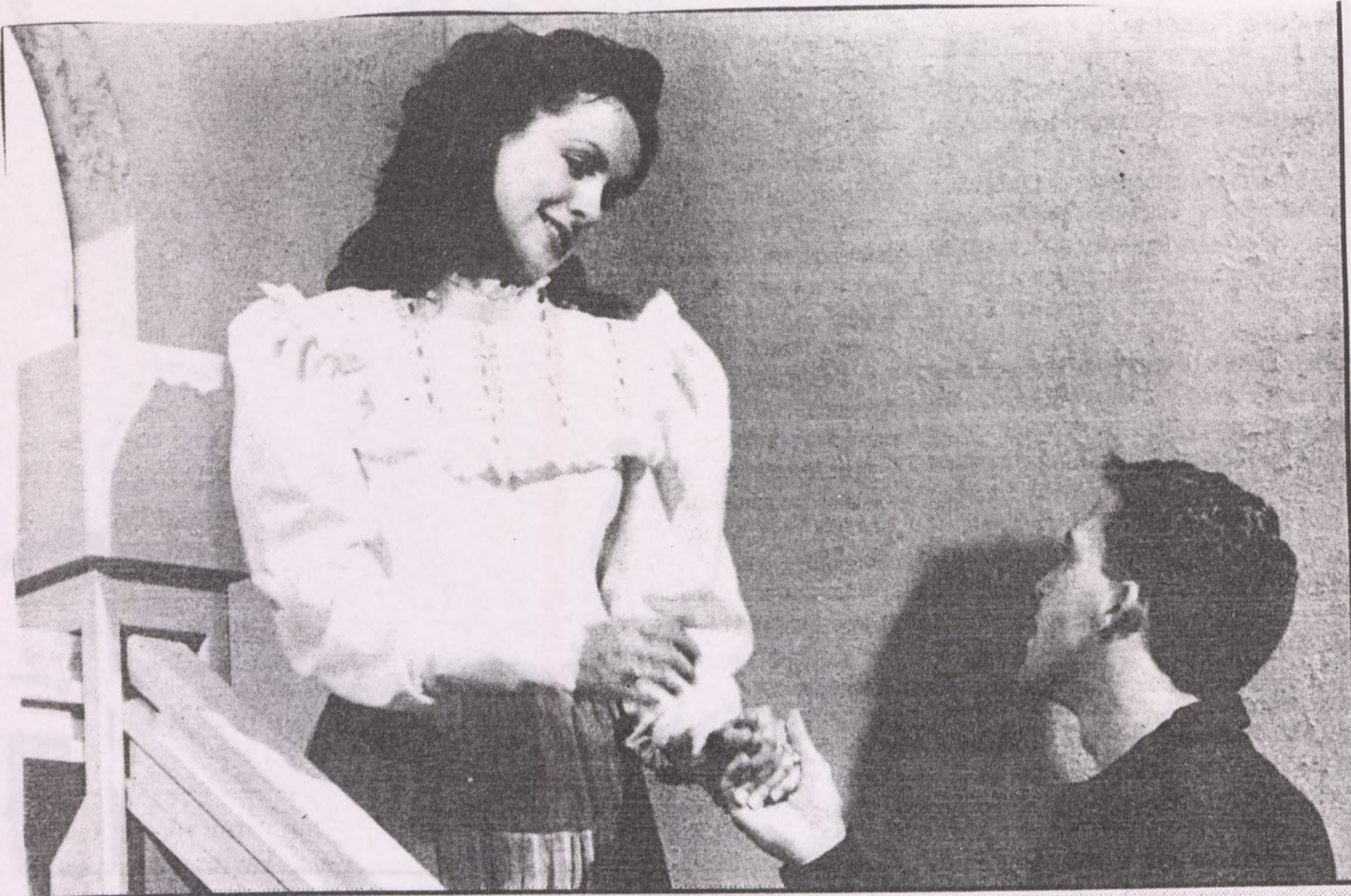
BalletMet is calling all dogs to try out for its upcoming production of *Giselle*, Sept. 30 through Oct. 2 at the Ohio Theatre.

10-6-93
Westerville News



Preparing for opening

Otterbein College Theatre will present *I Hate Hamlet* at 7:30 p.m. today in Cowan Hall, 30 S. Grove St. The play will continue at 8 p.m. Thursday through Saturday and Oct. 14-16. A matinee will be performed at 2 p.m. Sunday. Cast members are (from left): Jenny Stratton as Deirdre McDavey, Todd Crain as the ghost of John Barrymore and Josh Gildrie as aspiring actor Andy Rally. Tickets are \$9.50 for Friday and Saturday shows, \$8 for Wednesday, Thursday and Sunday shows. For tickets call the box office at 823-1109 between 1 and 4:30 p.m. weekdays.



12C

Sept. 23, 1993

Jenny Stratton (left), as Delirdre Mc Davey, and Josh Gildrie Jr., as Andrew Rally, star in "I Hate Hamlet," beginning Wednesday, Oct. 6 in Cowan Hall. For ticket information call the box office at 823-1109. Photo by Kris Gross.