

April 26, 1974

## Directors named for "Kate"

Directors for the Otterbein College Theatre production of "Kiss Me Kate," opening May 15 in Cowan Hall, have been named by Dr. Charles W. Dodrill.

Musical director for the production, presented in cooperation with the Otterbein College department of music, is Dr. Lyle T. Barkhymer. Prof. Fred J. Thayer will be designer-technical director for the production.

Choreographer is Miss Joanne VanSant, and Dr. William A. Wyman will be in charge of vocal presentations. Costuming for the production will be created by Mrs. Petie Dodrill. General director of the musical is Dr. Dodrill.

"Kiss Me Kate," colorful modern version of Shakespeare's "The Taming of the Shrew" features the delightful music of Cole Porter and memorable songs including "So In Love," "I Hate Men," "Wunderbar," "Too Darned Hot" and "Always True To You (In My Fashion)."

Production dates at Otterbein

are May 15 through 18. Curtain time is 7:30 p.m. Wed., 8:15 p.m. for all other productions.

Columbus Dispatch  
SUN., APRIL 28, 1974



### DIRECTORS NAMED FOR MUSICAL

From left are Dr. Lyle T. Barkhymer, director of music; Joanne VanSant, choreographer; and Dr. William A. Wyman, director of vocal presentations, named by general director Dr. Charles W. Dodrill to respective duties for Otterbein College

Theater's production of "Kiss Me Kate." In addition, Prof. Fred J. Thayer will be designer-technical director and costumes will be created by Petie Dodrill for the musical, which will be staged at 7:30 p.m. May 15 and at 8:15 p.m. May 16-18.

## London Theatre Tour

Preliminary plans for the annual London Theatre Tour have been announced by tour organizer and escort, Dr. Charles W. Dodrill, Director of Theatre. The two week tour will depart on November 28 at the end of the fall term and return on December 12.

Tour activities include travel from New York to London via BOAC-747; first class hotel with private bath, TV, etc., in heart of London (Tavistock Hotel or similar); five theatre tickets; two tours of London's east and west end; full day tour to Stratford-Upon-Avon, including performance by the Royal Shakespeare Company; tour of Windsor Castle; breakfasts for the entire two weeks; services of resident host; tour escort and private guide for all English tours especially arranged for the group.

Based upon figures currently available, total cost for the complete tour, New York to London and return, will be approximately \$525.00.

Interested persons should contact Dr. Dodrill at his office in Cowan Hall. The tour group is restricted to 35 persons. Deposits of \$100 will be received at any time. — remainder of tour cost is due 30 days prior to departure (persons may withdraw up to 30 days before departure with complete refund). For further information contact Dr. Dodrill or phone him at 891-3909.

## otterbein college theatre and dept. of music

present



Thurs.-Sat., May 16-18—8:15

Reserved Tickets \$3 (Students & Golden Agers \$1.50 May 15 & 16)

Phone 891-3331, 1 to 4 p.m. weekdays for reservations.





ATTRACTION--Lucentio (Gian Morelli) makes no secret of his attraction to Kate's younger sister, Bianca (Beth Machlan), and pursues the young maid with gusto in "Kiss Me Kate", which opened last night at Otterbein. Produced by the Otterbein College Theatre in cooperation with the department of music, with lavish dances and songs, "Kiss Me Kate" is one of the most popular musical comedies of all time.

## Kiss Me Kate at Otterbein

"Kiss Me Kate," produced May 15-18 by the Otterbein College Theatre in Cowan Hall, supports its reputation of being one of the liveliest and most song-filled musical comedies ever to play on the stage.

The unforgettable songs of

Cole Porter, which include "Wonderbar" and "So in Love" are reinforced by chorus numbers designed and choreographed by Joanne VanSant. Miss VanSant has staged the lavish opening number, "Another Openin'" with all 25 singers and dan-

cers in a modern presentation.

The spirited "Tarantella" and the vibrant "We Open in Venice" are further invitations to enjoy the musical fun. Tempo changes with the softened "Were Thine That Special Face," a love song accompanied by ballet-style movement. Upbeat follows with the jazz-like stylization of "Too Darn Hot."

Completing the color of the musical in addition to the VanSant choreography are the costuming of Mrs. Petie Dadrill and the scene designs of Prof. Fred Thayer.

General director for "Kiss Me Kate" produced in assoc-

iation with the Otterbein College department of music, is Dr. Charles W. Dadrill.

For reservations and information, call 891-3331. Curtain time is 8:15 Thurs. Fri. and Sat.

SUN., MAY 12, 1974

Columbus Dispatch 13



## MUSICAL OPENS WEDNESDAY

Jerry Confer will play Petruchio to Dee Hoty's Katherine in Otterbein College Theater's production of the Cole Porter musical, "Kiss Me Kate," to be presented

in cooperation with the college's department of music Wednesday through Saturday in Cowan Hall. First curtain will be at 7:30 p.m., all others are 8:15.



## Hammond, McGlumphy, Boles and Miller direct workshop theatre

April 15 and 17 the Otterbein College Theatre Department will sponsor a workshop theatre session. The workshop theatre is designed to give student actors more experience and to provide more opportunities to try different kinds of plays including avant garde and extremely modern shows as well as providing a chance for aspiring directors.

Workshop Theatre is experimental and truly a workshop session. Plays are put on in a short amount of time with a minimum of scenery, costumes, and lighting. The emphasis is placed on the direction and the characters rather than the set and costumes, as well as characters.

For spring term, the directors are David Hammond, Brad McGlumphy, Bob Boles, and Dick Miller. Since four shows will be presented, they have been divided into a double bill. Two shows will be presented April 15 and the other two shows will be presented April 17.

The first set of shows will be

*Abortion* directed by Bob Boles a junior transfer student from Ohio State and *No Exit* directed by Brad McGlumphy a senior from Barnesville. *Abortion* written by Eugene O'Neill features James St. Clair, Larry Fantozzi, Leslie Young, Marty Johnson, Cheryl Sterle, Randy Cole, and Dave Shumway. The second play, *No Exit*, utilizes the abilities of Jon White, John Black, Sue Kocks, and Darci Burmingham to depict three people locked up together in one hideous room in hell. The windows are bricked up; there are no mirrors; the electric lights can never be turned off; and there is no exit. The irony of this hell is that its torture is not of the rack and fire, but of the burning humiliation of each soul as it is stripped of its pretenses

by the cruel curiosity of the damned.

The second offering is both acts of the play *The Private Ear* and *The Public Eye* directed by Dick Miller a senior from Toledo and David Hammond a senior from Byesville, Ohio respectively. *The Private Ear*, a comedy by Peter Shaffer, is a rueful romance in which a boy makes a date with a girl he met at a concert and has his worldly friend coach him for the occasion. Not only is the coaching all wrong, but the girl turns out to be a very rude disappointment. Jim West, Jurgan Tossman, and Cindy Snodgrass are cast members. *The Public Eye* depicts a snappy private detective who dresses like an unmistakable neon sign and is constantly eating yogurt and grapefruit. He has been hired to tail an accountant's wife, but has succeeded in giving himself away every time. David Hammond has chosen Jenny Herron, Steve Black, and Dan Hawk for his cast.

The one act plays are open to all students and the public is invited. Admission is free.

55

Citizen-Journal 7  
Mon., April 29, 1974, Cols., O.

## 'Kiss Me Kate' next at Otterbein College

Boxoffice for the Otterbein College Theatre production "Kiss Me Kate" will open May 1. Hours are 1-4 p.m. weekdays.

Presented in cooperation with the Otterbein College Department of Music, "Kiss Me Kate" is directed by Dr. Charles W. Dodrill.

The musical comedy, loosely based on the Shakespeare story of "The Taming of the Shrew" features the timeless music of Cole Porter and songs such as "So In Love", "Why Can't You Behave?", "Another Open'nin" and features one of the funniest vocal presentations on the American stage, "Brush Up Your Shakespeare".

Even more humorous is the production itself with mad-cap scenes between two couples who banter and battle and love with such jocular relish that the audience is caught up in the cross-fire.

"Kiss Me Kate" is a warm family show which leaves audiences humming and smiling with true theatrical pleasure.

Production dates are May 15-18 with a special student matinee on May 17 at 10 a.m. Curtain time is 7:30 p.m. Wednesday, and 8:45 for all other nights. Special student and Golden Ager rates available. Call 891-3331 for reservations and information.

Dispatch  
May 13, 74



## OTTERBEIN READIES MUSICAL

Gian Morelli as Lucentio makes no secret of his attraction to Kate's younger sister, Bianca, played by Beth Machlan, and Pursues the maid with gusto in "Kiss Me

Kate," opening Wednesday in Otterbein college's Cowan Hall. The production is a cooperative venture of the college's departments of theater and music.

T & C May 17, 1974

## "Kate" continues through Saturday

"Why do we work our asses off?" demands the title song from a 1970 hit musical. Ask this question of anyone involved in Otterbein's production of "Kiss Me Kate", and the answer

will probably be the same as the original, that is "Applause!" Why else would non-paid singers and dancers rehearse their way through five sets of vocal chords  
Continued on 4



Continued from 1

and ballet slippers? And why else would the male lead practice snapping a bull-whip until he almost snapped the tip off his nose? The answer can only be applause.

"Kiss Me Kate" opened this Wednesday, Not in Venice, but on the stage of Cowan Hall, and will run through tomorrow night.

### The Cast

Fred/Petruchio . . . Jerry Confer  
Lilli/Kate . . . Dee Hoty  
Bill/Lucentio . . . Gian Morelli  
Lois/Bianca . . . Beth Machlan

## otterbein college theatre

and  
dept. of music  
present



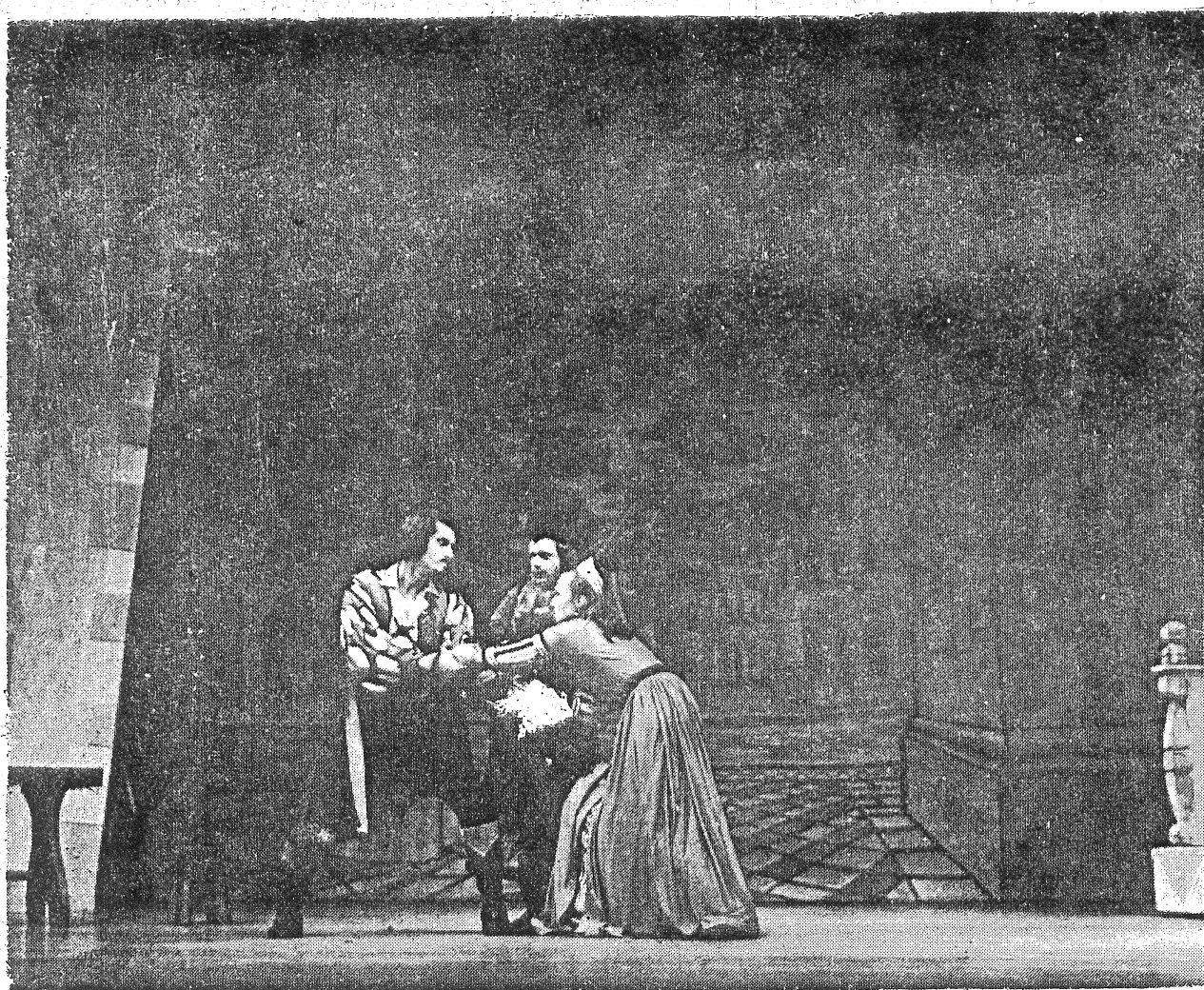
WED., MAY 15—7:30  
THURS.-SAT., MAY 16-18—8:15

Reserved Tickets \$3.00 (Students and Golden agers \$1.50 on May 15-16)

Phone 891-3331, 1 to 4 p.m. weekdays for reservations

Cowan Hall — Plush New Seats — 20 minutes from downtown





## Musical parallels Shakespeare

The Otterbein College Theatre will open the famous Cole Porter musical, "Kiss Me Kate" for a four-day run beginning Wednesday, May 15 at 7:30 p.m. Curtain time for Thursday, Friday and Saturday is 8:15 p.m. in Cowan Hall.

This is the musical hit that scored a run of 135 weeks in New York when it opened with its book by Sam and Bella Spewack.

Of all the brilliant song-writers of our time, however, none could fit as many Shakespearian titles into one short patter song as the hilarious Cole Porter number "Brush Up Your Shakespeare," sung by two ridiculous gangsters who suddenly find themselves on-stage and contributing to the comedy of the show.

Appearing in "Kate" are Dee Hoty and Jerry Confer as the entertainingly temamental stage couple who are "So In Love" with each other between fights backstage at the pre-New York tryout of Shakespeare's "Taming of the Shrew."

Miss Hoty as Lilli Vanessi and Jerry Confer as Fred Graham are thrown together in the play after a bitter-sweet divorce which led Lilli to vow, "I Hate Men." A moment later, however, she and Fred recall their "good ole days" and sing to each other a heartfelt "Wonderbar." Perhaps the high point of the whole show, at least for Fred and Lilli, however, comes when their acting becomes more than just a little ferocious, very serious, and terribly entertaining. Lilli, whom the script calls upon to pat Fred, does so with a bit more zest than she should, at least to Fred's way of thinking. He reacts with gusto, and soon the funniest love-hate comic scene in memory is taking place on the stage.

"Kiss Me Kate's" lustily-battling couple parallels Shakespeare's feud with a timeless comedy that is heartily amusing to all generations.

For information and reservations, call 891-3331, 1-4 p.m. weekdays.

## SUMMER THEATRE ANNOUNCED

The Otterbein Summer Theatre is an educational as well as professional theatre according to Dr. Charles Dodrill, Director of Theatre at Otterbein.

This summer 20 students will be participating in the acting and technical company. Among those participating are: Richard Miller, Jerry Confer, Beth Machlan, Tony DelValle, Julie Sickles, Pam Hill, Dennis Romer, Gian Morelli, Jim West, Sharon Bichnell, Roby Pruett, Judith Easton, James Dooley, Leslie Young and Pamela Burns.

Their first presentation will be "Present Laughter." Directed by Dr. Dodrill, it will open on June 18-23. "The Fantasticks" a highly successful off-Broadway musical, will run from June 26-29 and July 2-3-5-6 and will be directed by Lloyd Lewis, an Otterbein graduate and Executive Director of the Columbus Junior Theatre of the Arts. "Come Blow Your Horn" will then run from July 9-13. Dennis Romer, an Otterbein

alumnus, will direct the Neil Simon play.

The fourth show of the season will be the mystery-thriller, "Night Must Fall," directed by Executive of the Ohio Arts Council Don Striebig. It will run on July 16-20. The eighth season of the Otterbein Summer Theatre will close with "The Impossible Years" from July 23-27, directed by Dr. Dodrill.

A special Children's Theatre production of "Pinocchio" will be presented at 1:30 p.m. on July 5-7 and July 11-13. Mrs. Petie Dodrill will direct the Children's Theatre production.

Seats in the air-conditioned Campus Center arena theatre are reserved at \$2.25 for all shows excepting the musical at \$3.00. Season tickets will be available at \$10. Children's Theatre is 75 cents for children, \$1.00 for adults. For special group rates, call Dr. Charles Dodrill, 891-3909.

TAN AND CARDINAL  
May 31, 1974





**DEELIGHTFUL** — Tall, talented Dee Hoty is shown in scenes of past Otterbein theater productions. At the left she's Golde in "Fiddler on the Roof" (1971) in duet with David Mack, singing the tender "Do You Love Me?" Miss Hoty was first introduced to the Otterbein theater program by



Mack, who now is acting in professional theater. At the right, Miss Hoty is shown at left with Dave Graf and Shelley Russell in the 1973 summer theater production of "Plaza Suite." The mezzo-soprano will pursue a career in professional music theater after "Kiss Me Kate."

## Dee Hoty Ends Versatile College Career

When "Kiss Me Kate" opens at Otterbein College May 15, it won't be just "another opening, another show" for coed actress Dee Hoty, appearing as Katherine.

Called "the most talented musical comedienne" in an impressive and highly talented history of Otterbein wom-

en by her director, Dr. Charles W. Dodrill, Miss Hoty's versatile college career culminates with the four-day run of "Kate."

Credits for the young singer-actress already include the lead in another musical, Golde in "Fiddler on the Roof," and main-role appearances opposite professional guest actors Robert Morse in "Three Men On A Horse" and Jack Gwillam in "Lion in Winter."

**OTHER MAJOR** singing roles for Miss Hoty have



**MISS HOTY**

included Mrs. MacLean in "Susannah," Otterbein Opera Theater production, and the beautiful solo of Domina in "A Funny Thing Happened on the Way to the Forum."

Recently Miss Hoty appeared as a guest folk singer in the Chintz Room at F and R Lazarus.

The blue-eyed, brown haired mazzo-soprano combines her vocal accomplishments with an acting proficiency which has won her 20 major roles with the ten different directors including two seasons as a member of the acting company of the Otterbein Summer Theater.

For this opening, appearing as Kate, Miss Hoty's songs will include the duet "Wunderbar" and her musical protest against chauvinists, "I Hate Men!" "Women Are So Simple" declares Kate in another solo and she confesses to her audience, "So In Love Am I."

**AFTER MISS HOTY** completes her final performance as Katherine Saturday night she plans to pack up her trunk-load of talents and pursue a career in professional musical theater. Currently auditioning with area professional companies, Miss Hoty is considering several offers from major performing groups.

But right now it's "another show" for actress-singer Dee Hoty and the role of the

vexing and perplexing Katherine, actress-divorcee who vacillates between loving and despising her former husband, demands the comic skill and seasoned acting competence of a pro.

"It's the perfect challenge for Dee," Dr. Dodrill says.

"This is a funny, funny show and she's a born comedienne. As Kate, she's simply smashing!"

"Kiss Me Kate" opens at Otterbein May 15 at 7:30 p.m. in Cowan Hall with productions also on May 16, 17 and 18 at 8:15 p.m.

### Ushers needed

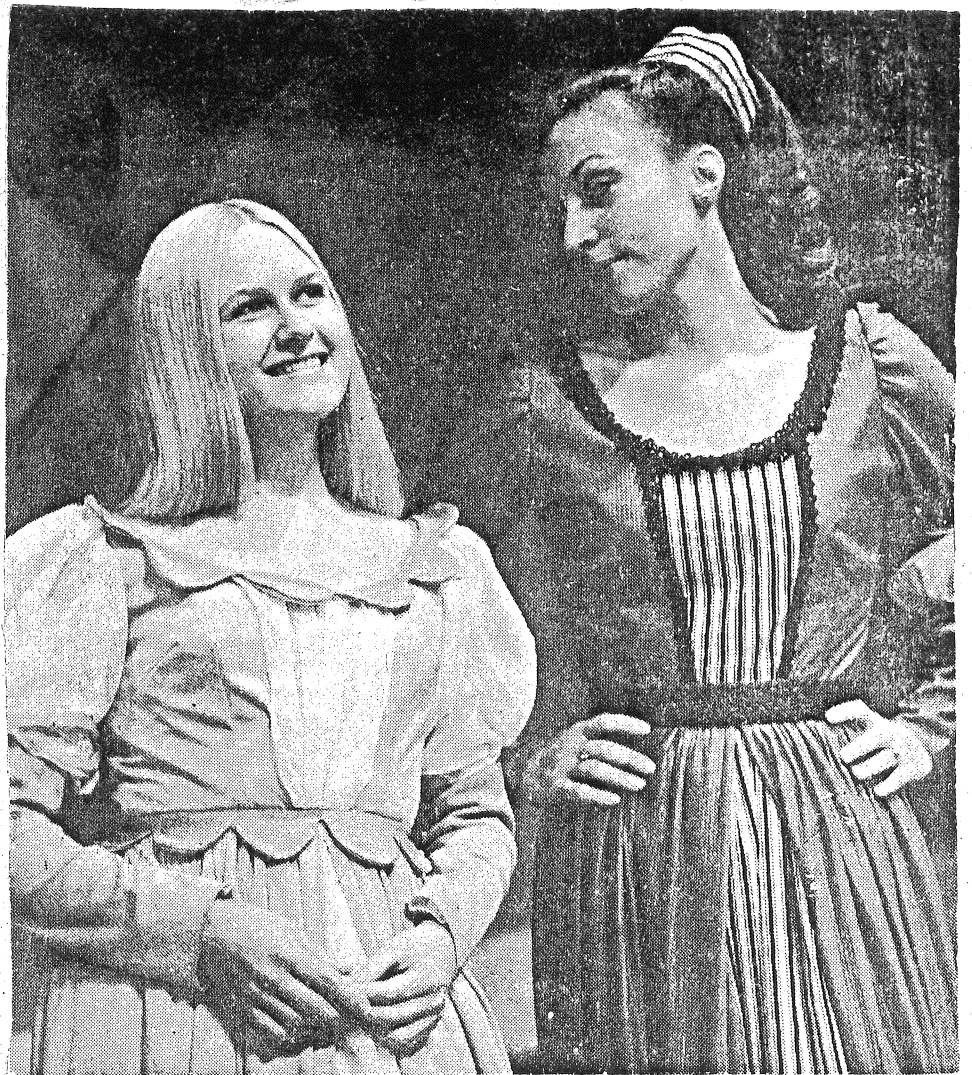
Persons who would like to usher for Otterbein Summer Theatre are invited to call 891-3331 from 12:30 to 9 p.m. to register with Director Charles W. Dodrill.

Ushers are, of course, admitted free to the plays and work once each week throughout the six-week season. Openings are still available for ushers, beginning with the current production in the Otterbein Campus Center, "Present Laughter."





**WOMAN TAMER**--"Kiss Me , Kate, Darling devil divine," Petruchio (Jerry Confer) tells Katherine (Dee Hoty) in the title song from the musical opening at Otterbein College Theatre May 15 through May 18 in Cowan Hall. Presented in cooperation with the Otterbein department of music, "Kiss Me Kate" features the songs of Cole Porter and the comedy of Shakespeare gone modern. Curtain time is 7:30 p.m. Wednesday, 8:15 p.m. for all other performances.



**SWEET AND SHREW**--Bianca (Beth Machlan) assumes an air of sweet innocence, but Katherine (Dee Hoty) is visibly skeptic as the two become near-rivals in "Kiss Me Kate", family musical comedy opening at Otterbein May 15. Productions at Cowan Hall also on Thursday, Friday and Saturday night, "Kiss Me Kate" mingles Shakespeare with modern shenanigans and colorful dances and songs. Cole Porter tunes featured include "Wunderbar", "So In Love", "Always True To You, Darlin'" and the funniest-ever musical commentary, "Brush Up Your Shakespeare".

May 24, 1974

TAN AND CARDINAL

## OFF THE WALL

KISS MY...

by Michael Bauer

No sooner does the Schlitz-malt hangover from Spring Fever Day seem to pass and the Dum-Dum suckers you hoarded get licked into oblivion than mom, dad, and the kiddies from home pour in to check up on where their four grand went and to help celebrate the time-honored spring fertility rights, known in some circles as the "Ritual Sacrifice of the Virgins who were Really Sacrificed on Prom Night, Years Ago." For your money you get the main event, the crowning of the Fertility Goddess, plus an eighteen-ring sideshow, including select sorority sweeties deep-throating bananas, Angels enshrouded in cotton-candy veils, whimpering about the MIA's (who are secretly confined on Okinawa with Vietnamese syphilis), and a host of lesser attractions. But the biggest, most glamorous spectacle of all is the annual spring musical, produced jointly by the Departments of Theatre and Music. This year's gala attraction was *Kiss Me Kate*, the Cole Porter musical based on Shakespeare's (amen) *Taming of the Shrew*. General Director Charles Dodrill and his cast, crew, and orchestra, gave us an entertaining performance of an entertaining musical; no more, no less. Not a memorable production, certainly, but likewise not one to be ashamed

of.

I have a built in bias against musicals as serious art. No show, to me, can be convincing when every other minute someone in the cast is breaking into some corny song about love, trombones, or Sanka decaffeinated coffee crystals. Even most opera's fall on their faces if you view them as theatrical works. Opera's stand on the quality of their music, musicals stand on the "catchiness" of their melodies and the mindlessness of their entertainment. That in mind, it is safe to label *Kiss Me Kate* "very entertaining."

The Otterbein production starred Dee Hoty as Lilli Vanessi, Beth Machlan as Lois Lane, Gian Morelli as Bill Calhoun, and Jerry Confer as himself. The acting was solid. Miss Hoty was superb, both vocally and dramatically. She knew her character and her audience well and used that knowledge to sell her role as convincingly as it could be sold. Beth Machlan is a fine singer and an absolute genius with facial expressions. Occasionally, however, her speaking voice didn't sell her lines as well as her face did. The male half of the quartet lacked something vocally and perhaps weren't as effective as their opposites but there was something about their acting I liked. Mr. Morelli was so subtle that he made Lois Lane's

flirtiness even more emphatic. Mr. Confer (who really played Fred Graham) rescued his role from potential boredom by playing it tongue-in-cheek. This had one rather noticable effect on the play. It kept it moving at times when it would otherwise have died. Special mention must also go to Jim West and John Black, whose portrayal of the two gangsters, especially through their body comedy, had me nearly in the isles with laughter.

The sets were up to Fred Thayer's usual high standards. Dr. Lyle Barkhymers "unsung heroes" in the orchestra pit, although not outstanding at least played the difficult score adequately. The big sore spots were the chorus and dance numbers. Although well conceived, the execution on the big dance numbers was sloppy too often, and on all the big production numbers, the audience was subjected to an abundance of very forced, very begrudging smiles. In a show which is primarily entertainment, the audience must be convinced that those on stage are enjoying themselves or nothing works. It took the leads a couple of minutes each time to pull themselves out of the whole that the chorus and dancers dug for them. That they did it was a credit to their abilities.

All in all, an enjoyable if not profound evening.

## Fun-loving musical opens Wednesday

"Kiss Me Kate" opens at the Otterbein College Theatre next Wednesday at 7:30 p.m. and continues May 16-18 at 8:30 p.m. in Cowan Hall.

The musical comedy, sprinkled with familiar songs by Cole Porter, has the reputation of having one of the wittiest scores ever written. In "Kiss Me Kate," every musical number is a sheer delight.

From the first number, "Another Openin', Another Show," to the finale, "Kiss Me Kate," the hilarious comedy is interspersed with memorable songs which are now considered among the musical comedy classics.

Two very funny gangsters (Jim West and John Black) confuse the whole plot with their comically confusing antics and bring the show to a musical climax with the contagious vaudeville routine, "Brush Up Your Shake - speare."

"Kiss Me Kate" is a warm production which leaves everyone humming and smiling "Always True to You," "I Sing of Love," and "So in Love Am I."

Tickets for "Kiss Me Kate" are available at the Otterbein College Theatre box office, 1-4 p.m. weekdays. For reservations and information, call 891-3331.

58



MAY-17-74

## 'KISS ME KATE'

# 39 Musical Very Well Done at Otterbein

By SARA CARROLL  
Of The Dispatch Staff

Otterbein College Theater culminates its 1973-74 season with a lavish and lively production of "Kiss Me Kate."

Despite a somewhat outdated book, "Kate" is great. With music and lyrics by Cole Porter, how can you go wrong?

Based on Shakespeare's "Taming of the Shrew," the musical utilizes the format of a play within a play to highlight such Porter tunes as "Why Can't You Behave," "Wunderbar," "So in Love," "Always True to You in My Fashion," "I Hate Men!" and "Too Darn Hot."

Directed by Dr. Charles Dodrill and costumed by his wife, Petie, it measures up their usual high production standards.

LIKE MOST older gals, "Kate" DOES sag a little in the middle, but her indomitable spirit brings her roaring back to fabulous finale.

Thin plot tells of the divorced theatrical couple cast in a musical version of "Taming of the Shrew." Their backstage conflicts form the nucleus of the story until "love conquers all."

Dee Hoty winds up a most successful college theater career with an equally successful performance as Lilli Vanessi, stage actress who portrays Katherine (Kate.)

MISS HOTY has, in four short years, matured into a most attractive woman, and her voice is beginning to grow with her.

In early vocal solos she was a bit thin in upper register, although rich, full-bodied and right on the button in lower range. In later scenes, that unevenness was not apparent, and she was glowing.

As an actress, she can rarely be faulted and this particular role calls for some hamminess without being hammy about it. For the most part, she brought it off beautifully.

Male lead, Jerry Confer, is not all that good an actor yet but he sings very nicely despite a few scattered pitch problems.

SECONDARY leads, Bob Pettigrew and Beth Machlan sing and act with some degree of hesitancy. Miss Machlan, though, is a beauty who should come along well as she acquires more vocal strength. Pettigrew is a graceful dancer, not too bad a singer and needs a bit more polish as an actor.

Jim West and John Black

were delightful as the two gangsters and in the can't-fail-to-please number, "Brush Up on Your Shakespeare."

Opening production number of act II was "Too Darn Hot," which, ironically became an joke in-house. It was exactly that in non-air conditioned Cowan Hall and the audience released a ripple of laughter as they used programs for fans. Grapevine has it that the situation may be corrected by next season.

Choreography by Joanne Van Sant was well-charted and very well executed.

MRS. DODRILL'S costuming was elegant (as it always is) and added much to the overall success of the presentation. Fred Thayer's imagi-

native and artistic set design was altogether an asset.

Last, but not least, the orchestra was par excellence — a truly fine ensemble, cueing in beautifully with a 'together' sound, under the forceful direction of music

director, Lyle Barkhymer.

On a scale of 100, we'd have to rate the overall production a healthy 89 plus. The house was filled Thursday and you've only Friday and Saturday nights to get in on the fun.



# Kiss Me Kate delights, dazzles

P.O. 5/23/74

by Sarah Skaates

The Otterbein Theatre production of the Cole Porter/Spewak musical take-off on Shakespeare's "Taming of the Shrew" came to life last weekend with delightful dazzle.

"Kiss Me Kate" has a lot of fun with the man vs woman theme spelled out in Shakespeare's classic. Women's libbers may look askance at the premise, but otherwise age has had little dimming effect on either the original comedy or the musical.

Porter's music is tuneful and catchy, and in the hands of the Otterbein musicians it is performed with skill and spirit. From Barbara Kosciuk's bouncy "Another Op'nin' Another Show" through the swaggering "I've Come to Wive it Wealthily in Padua" and the emphatic "I Hate Men" through the lighthearted "Brush Up Your Shakespeare," Otterbein's May Day show was the kind of no-strain entertainment perfectly suited to the season.

In the title role, Dee Hoty gave top notch vocal treatment to her solos, and carried the role of the actress playing Shakespeare's Katherine with real comedic flair. To quote another playgoer, "Hasn't it been fun to watch that girl grow? When she was a freshman she had the voice but that was about all. And look at her now!"

Matching Kate with stage flair and fireworks if not quite vocally was Jerry Confer as Fred Graham/Petrucio. Beth Machlan as Lois Lane/Bianca and Gian Morelli as Bill Calhoun/Lucen-

tio provided some high moments with "Every Tom, Dick and Harry," "Always True to You in My Fashion," and "Bianca."

Heading up the laugh-sing-and-dance department were Jim West and John Black

as the two gangsters whose "Brush Up Your Shakespeare," was repeated as a curtain call.

Fred Thayer's set designing talents got a real workout as he provided dressing rooms, rehearsal stages, Italian streets, and more to keep up with the constantly shifting scenes. His work, coupled with the costume designing eye of Petie Dodrill, was responsible for the colorful lavishness of the show.

Joanne Van Sant's choreography was not only exuberant in concept but danced with confidence and character. The musical excellence of "Kiss Me Kate" was due to the capable work of Lyle Barkhymer, musical director and William Wyman, choral director. Charles Dodrill, as general director, gave the whole production that distinctive "put-together just right" stamp which is his hallmark.

One of the "Kiss Me Kate"

songs could well be adopted as the Cowan Hall spring and summer themesong - "Too Darn Hot." Those comfy new seats were one welcome big step toward increased comfort. Now for some air conditioning so we don't stick to them!



COLUMBUS CITIZEN JOURNAL  
COLUMBUS, O.  
A.M. - 4192. 117,500

MAY-15-74

10 Citizen-Journal ★ ★ Wed., May 15, 1974, Cols., O.

## Otterbein presents Cole Porter musical

(389) "Kiss Me Kate", produced May 15-18 by the Otterbein College Theatre in Cowan Hall, supports its reputation of being one of the liveliest and most song-filled musical comedies ever to play on the stage.

The unforgettable songs of Cole Porter, which include "Wunderbar" and "So In Love," are reinforced by chorus numbers designed and choreographed by Joanne VanSant. Miss VanSant has staged the lavish opening number, "Another Openin'", with all 25 singers and dancers in a modern presentation.

The spirited "Tarantella"

and the vibrant "We Open In Venice" are further invitations to enjoy the musical fun. Tempo changes with the softened "Were Thine That Special Face", a love song accompanied by ballet-style movement. Upbeat follows with the jazz-like stylization of "Too Darn Hot".

Completing the color of the musical in addition to the VanSant choreography are the costuming of Mrs. Pefie Dodrill and the scene designs of Prof. Fred Thayer.

General director for "Kiss Me Kate", produced in association with the Otterbein College department of Music, is Dr. Charles W. Dodrill.

For reservations and information, call 891-3331. Curtain time is 8:15 p.m.

4/25/74 P.O.  
**"Kiss Me Kate"**  
**directors named**

Directors for the Otterbein College Theatre production of "Kiss Me Kate", opening May 15 in Cowan Hall, have been named by Dr. Charles W. Dodrill.

Musical director for the production, presented in cooperation with the Otterbein College department of music, is Dr. Lyle T. Barkhymer. Prof. Fred J. Thayer will be designer-technical director for the production.

Choreographer is Miss Joanne VanSant, and Dr. William A. Wyman will be in charge of vocal presentations. Costuming for the production will be created by Mrs. Petie Dodrill. General director of the musical is Dr. Dodrill.

"Kiss Me Kate", colorful modern version of Shakespeare's "The Taming of the Shrew" features the delightful music of Cole Porter and memorable songs including "So In Love," "I Hate Men," "Wunderbar," "Too Darned Hot" and "Always True To You (In My Fashion)".

Production dates at Otterbein are May 15 through 18. Curtain time is 7:30 p.m. Wednesday, 8:15 p.m. for all other productions.



COLUMBUS CITIZEN JOUR  
COLUMBUS, O.  
A.M. = CIRC. 117,500

MAY-8 -74

## Otterbein to stage popular musical

389  
"Kiss Me Kate" opens at the Otterbein College Theater May 15 at 7:30 p.m. and continues May 16-18 at 8:30 p.m. in Cowan Hall.

The musical comedy, sprinkled with familiar songs by Cole Porter, has the reputation of having one of the wittiest scores ever written. In "Kiss Me Kate," every musical number is a sheer delight.

From the first number, "Another Openin', Another Show," to the finale, "Kiss Me Kate," the hilarious comedy is interspersed with memorable songs which are now considered among the musical comedy classics.

Two very funny gangsters (Jim West and John Black) confuse the whole plot with their comically confusing antics and bring the show to a musical climax with the contagious vaudeville routine, "Brush Up Your Shakespear".

"Kiss Me Kate" is a warm production which leaves everyone humming and smiling "Always True To You," "I Sing Of Love" and "So In Love Am I".

Tickets for "Kiss Me Kate" are available at the Otterbein College Theater box office, 1-4 p.m. weekdays. For reservations and information, call 891-3331.

COLUMBUS EVENING  
DISPATCH  
COLUMBUS, O.  
P.M. - CIRC. 222,350

APR-21-74

## 384 Classic to Complete Season

Otterbein College Theater will complete its season with a four-day run of "Kiss Me Kate," opening May 15 in Cowan Hall.

The timeless music of Cole Porter is featured in the comedy, which will be presented in cooperation with the Otterbein Department of

Music. Curtain times are 7:30 p.m. May 15, and 8:15 p.m. May 16-18.

When Fred Graham (Jerry Confer) decides to stage a revival of "The Taming of the Shrew," he hires his ex-wife, Lilli (Dee Hoty) to play Katherine to his Petruchio. When she finds him playing up to Lois (Beth Machlan), Lilli's rage leads to mayhem, on and off the stage.

Meantime, Lois' partner Bill (Gian Morelli) has signed Fred's name on a gambling debt and the gangsters come to collect.

Cast with the four lead singers are Bob Pettigrew as Baptista, Bill Brewer as Germio and Tony Mangia as Hortensio. Barbara Kosciuk will play Hatti, Fred DeBell is Ralph and Steve Black is Harrison Howell.

The gangsters will be played by Jim West and John Black. More than 25 college singers and dancers will be in the chorus.

Directed by Dr. Charles W. Dodrill, "Kiss Me Kate" is a modernization of the Shakespearean classic done mostly in song and dance.



# CURTAIN CALL

Jean Ann Weaver



Dee Hoty's last appearance on the Otterbein stage and she will be missed.

"Kiss Me Kate" is a colorful musical and this impression was heightened by the costumes designed by Petie Dodrill and scene designs by Prof. Fred Thayer. The color coordination between costumes and sets in the Shakespeare scenes were a visual delight. Equally interesting was the way Petie Dodrill used certain colors, or shades of one color, for certain characters.

Jim West as the first gangster and John Black as the second gangster were the scene stealers of the show. "Brush Up Your Shakespeare" was an abso-

lute romp for both performers and audience. I'm not sure who enjoyed it the most. West is a more controlled comic, but Black shows a physical type of comic movement that puts him into the clown type of classification such as Red Skelton and Ben Blue have enjoyed. Thank you too, director Charles Dodrill, for again proving that undergraduate performers have great potential when well directed.

Otterbein College Theater, Department of Music, and Dance Department, presented a most enjoyable evening of entertainment with their production of "Kiss Me Kate," last week.

The script and score of "Kiss Me Kate" have stood the test of time quite well. And where the script does show signs of aging it is with charm and is inoffensive. The Cole Porter music is still young and fresh and such tunes as "Another Openin'," "Wunderbar" "I Hate Men" and "Too Darn Hot" were enthusiastically received by the audience.

Dee Hoty as Lilli Vanessi and Katherine and Jerry Confer as Fred Graham and Petruchio, set the pace and style for the entire production — as well as the rest of the cast. This was