

le *Hearts in Atlantis*; *The Musketeer*, *The*
a *Others*; *Serendipity*; *Zoolander* (all PG-
n-13); *Max Keeble's Big Move* (PG). 614-
s: 856-2657.

Regal Georgesville Square 16, 1800
Georgesville Square Rd. — *America's
Pie 2; Don't Say a Word; Jeepers Creep-
ers; Joy Ride; Training Day* (all R); *The
Glass House; Hardball; Hearts in Atlantis;*
Legally Blonde; Megiddo; The Musketeer;
The Others; Serendipity; Zoolander (all
PG-13); *Extreme Days; Max Keeble's Big
Move* (both PG). 614-853-0850.

Regal River Valley Cinema, 1635 River Valley Circle S., Lancaster — *American Pie 2*; *Don't Say a Word*; *Joy Ride*; *Training Day* (all R); *Hardball*; *Hearts in Atlantis*; *The Others*; *Serendipity*; *Zoolander* (all PG-13); *Max Keeble's Big Move* (PG). 740-654-8044.

Star Cinemas, 2384 Stringtown Rd., Grove City — *Don't Say a Word; Joy Ride; Training Day* (all R); *The Glass House; Hardball; Hearts In Atlantis; Serendipity; Zoolander* (all PG-13). Equipped for the hearing-impaired. Matinees daily. 614-539-8500.

Strand Theatre, 28 E. Winter St., Delaware — *The Deep End* (R); *Serendipity*; *Zoogander* (PG-13). 740-363-4914.

Studio 35 Cinema, 3055 Indianola Ave. — Triple feature: *Made* (R); *Rush Hour 2* (PG-13); *Jay and Silent Bob Strike Back* (R). Matinees and Late shows daily. 614-261-1581.

**THE CRITICS BELIEVE
IN SERENDIPITY!**

REX REED OF NEW YORK OBSERVER

**"UPLIFTING, ROMANTIC
AND DELIGHTFUL!"**

Just the kind
of movie we
need more
of now."



JOHN CUSACK KATE BECKINSALE
SERENDIPITY

PG-13
TASPESTRY
JDD
www.miramax.com/superdick
MIRAMAX
COLUMBIA
SONY MUSIC
SOUNDTRAX

NOW
PLAYING!

AMC THEATRES
DUBLIN VILLAGE 18
SAWMILL AND I-270
429-4262

MOVIES 16
MORSE @ HAMILTON GAIHANNA
471-7321

MARCUS THEATRES
PICKERINGTON 16
HWY. 256. & HWY. 204
759-6500

AMC THEATRES
EASTON 30
275 EASTON TOWN CTR.
429-4262

REGAL CINEMAS
GEORGEVILLE SQ. 16
GEORGEVILLE RD. AT I-270
853-0850

MOVIES 10
WEST POINT PLAZA
529-8547

MARCUS THEATRES
CROSSWOODS
I-270 & US-23
614-841-1600

AMC THEATRES
LENNOX 24
777 KINNEAR RD.
429-4262

REGAL CINEMAS
CONSUMER SQ. 14
TUSSING & BRICE RD.
614-856-2657

MOVIES 12
1-270 AT UPPER ARLINGTON EXH
777-1010

DREXEL THEATRES
ARENA GRAND
175 W. NATIONWIDE BLVD.
614-470-9900



Fifth Third Bank

Working Hard To Be The Only Bank You'll Ever Need.®

Otterbein College Theatre

A MIDSUMMER NIGHT'S DREAM

By William Shakespeare
Directed by Robert Behrens

Directed by Robert Behrens

October 11-14, 18-20

Cowan Hall
30 S. Grove St.
Westerville

BOX OFFICE: 823-1109

Monday-Friday 1:00-4:30 p.m.

Our THX theatres are designed
to make you "feel" the movie.

*Which will certainly add
a new dimension to movies
with steamy love scenes.*

**rnivorous & Other
ry Plants**
through October 31st

CURTAIN RISING RISING

*Otterbein
Theatre kicks off
95th annual
season Oct. 11*

By W.M. HANKLE

News & Public Opinion Reporter

When William Shakespeare penned, or perhaps quilled, *A Midsummer Night's Dream* in the dusk of the 16th century, he might not have chosen the phrases "a lime-green playground" or "almost hip-hop" to describe his work.

However those are some of the words John Stefano, chairman of Otterbein College's Department of Theatre and Dance, has affixed to the production that will on Oct. 11 will kick off Otterbein College's 95th theatre season.

"I think people are just going to adore this thing," Stefano said of the piece. "It is raucous and lively and 'out-there.' To borrow from a Buick commercial, 'This is not your father's *Midsummer Night's Dream*.'"

And this isn't your father's theater season at Otterbein College, either.

In addition to the modern take on the classic Shakespeare work, the six pieces comprising the year's offerings range from *ctrl+alt+delete*, billed as a high-tech comedy, to a joint production of a Gilbert and Sullivan classic, *The Mikado*, teaming the Department of Theatre and Dance with the Department of Music for the first time.

Stefano couldn't point to just one piece that would be the overwhelming crowd-pleaser this year.

"People will like (this season's entire lineup) for different reasons," he said.

Stefano said three genres coalesce in each Otterbein theater season: a children's show, a spring musical, and a dance concert. Beyond that, all bets are off.

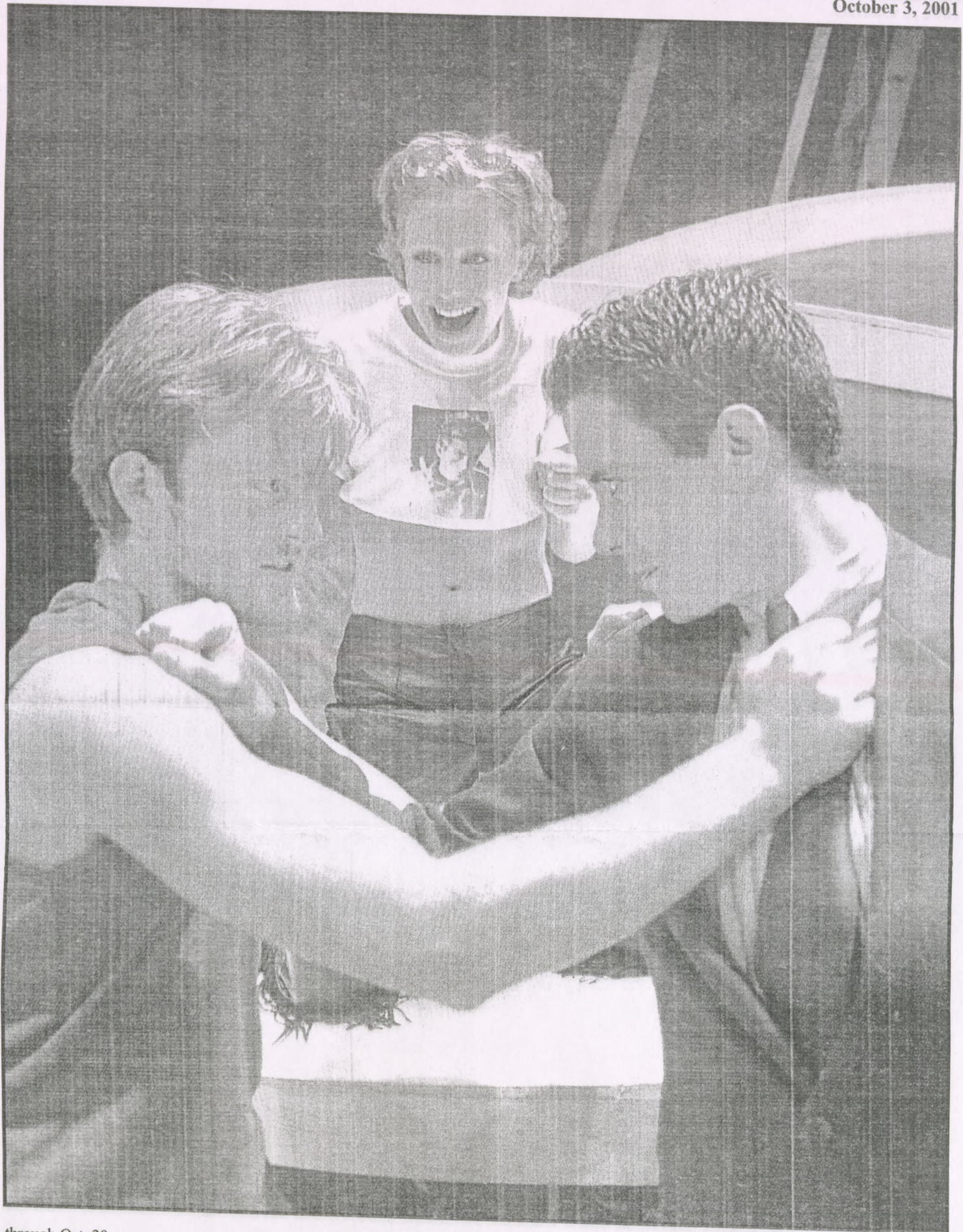
"We adjust depending on the needs of the students, what we haven't done for a while, and what the audience might be interested in seeing," he said of the process of deciding the remaining pieces.

Possibilities are run past Otterbein Department of Theatre and Dance faculty, and then the season is solidified.

Stefano estimated that currently 100 students majoring in theater and dance are enrolled at Otterbein College.

"I think anybody in the country would put us in the top 20 professional training programs nationwide," Stefano said.

The season-opening *A Midsummer Night's Dream* will begin Oct. 11 and run



through Oct. 20.

■ Next month brings the annual dance concert, *Galleria de Danse*, spanning Nov. 8 through Nov. 11.

■ The new calendar year will bring *Book of Days*, written by Lanford Wilson, which will run Jan. 31 through Feb. 9.

■ The work of Gilbert and Sullivan takes the

stage in the form of *The Mikado* on Feb. 28, and relinquishes its hold March 9.

■ *ctrl+alt+delete*, by Anthony Clarvoe, makes its way to Otterbein's campus April 25 and ends May 4.

■ The children's production, *The Secret Garden*, written by Pulitzer Prize winner Marsha Norman, runs from May 16 to May 25.

Tickets may be bought as a six-show season subscription, or individually, depending on the production.

Stefano encourages the season subscription. "When you buy a subscription, you're making a promise to yourself that you're going to take time out from your life to go to the theater or go to a concert," he said.

Season subscriptions are \$65. Individual tickets for *The Mikado* and *The Secret Garden* are \$16, while all other tickets cost \$14.

To reserve tickets, call the Otterbein College

News & Public Opinion photo by Ann Tormet

Otterbein College students (from left) Jeremy Bobb, Lindsay Chambers and Trent Caldwell as, respectively, Lysander, Puck and Demetrius, stage a scene from Shakespeare's *A Midsummer Night's Dream*. The play will launch Otterbein's 95th theater season at 7:30 p.m. Oct. 11.

box office at 823-1109. The box office, located in Cowan Hall, 30 S. Grove St., is open 1 to 4:30 p.m. weekdays and one hour prior to performances.

Performances will take place at Cowan Hall, with the exceptions of *The Mikado*, which will be at Riley Auditorium in the Battelle Fine Arts Center, 170 W. Park St., and *ctrl+alt+delete*, held in the Campus Center Theatre, 100 W. Home St.

For more information about the season call 823-1209.

"I think people are just going to adore this thing. It is raucous and lively and 'out-there.'"

—Jon Stefano, Otterbein Theatre and Dance Department chairman
about season-opening adaptation of *A Midsummer Night's Dream*

Suburban News Publications

PLACE A CLASSIFIED AD CONTACT SNP WRITE A LETTER JOBS @ S

HOME

News from your Community

▶ CLASSIFIED
▶ COMMENTARY
▶ PHOTOGRAPHY
▶ SPORTS
▶ SPECIAL SECTIONS

All Material © Suburban News Publications
Columbus, Ohio

Related Photo



Otterbein College students (from left) Jeremy Bobb, Lindsay Chambers and Trent Caldwell as, respectively, Lysander, Puck and Demetrius, stage a scene from Shakespeare's *A Midsummer Night's Dream*. The play will launch Otterbein's 95th theater season at 7:30 p.m. Oct. 11. Photo by Ann Tormet

Published October 3, 2001

Otterbein Theatre kicks off 95th annual season Oct. 11

By W.M. HANKLE

© Suburban News Publications

When William Shakespeare penned, or perhaps quilled, *A Midsummer Night's Dream* in the dusk of the 16th century, he might not have chosen the phrases "a lime-green playground" or "almost hip-hop" to describe his work.

However those are some of the words Jon Stefano, chairman of Otterbein College's Department of Theatre and Dance, has affixed to the production that will on Oct. 11 will kick off Otterbein College's 95th theatre season.

"I think people are just going to adore this thing," Stefano said of the piece. "It is raucous and lively and 'out-there.' To borrow from a Buick commercial, 'This is not your father's *Midsummer Night's Dream*.'"

And this isn't your father's theater season at Otterbein College, either.

In addition to the modern take on the classic Shakespeare work, the six pieces comprising the year's offerings range from ctrl+alt+delete, billed as a high-tech comedy, to a joint production of a Gilbert and Sullivan classic, *The Mikado*, teaming the Department of Theatre and Dance with the Department of Music for the first time.

Stefano couldn't point to just one piece that would be the overwhelming crowd-pleaser this year.

"People will like (this season's entire line-up) for different reasons," he said.

Stefano said three genres coalesce in each Otterbein theater season: a children's show, a spring musical, and a dance concert. Beyond that, all bets are off.

"We adjust depending on the needs of the students, what we haven't done for a while, and what the audience might be interested in seeing," he said of the process of deciding the remaining pieces.

Possibilities are run past Otterbein Department of Theatre and Dance faculty, and then the season is solidified.

Stefano estimated that currently 100 students majoring in theater and dance are enrolled at Otterbein College.

"I think anybody in the country would put us in the top 20 professional training

"I think people are just going to adore this thing. It is raucous and lively and 'out-there.'"

--Jon Stefano

Otterbein Theatre and Dance Department chairman about season-opening adaptation of A Midsummer Night's Dream

programs nationwide," Stefano said.

* The season-opening *A Midsummer Night's Dream* will begin Oct. 11 and run through Oct. 20.

* Next month brings the annual dance concert, *Galleria de Danse*, spanning Nov. 8 through Nov. 11.

* The new calendar year will bring *Book of Days*, written by Lanford Wilson, which will run Jan. 31 through Feb. 9.

* The work of Gilbert and Sullivan takes the stage in the form of *The Mikado* on Feb. 28, and relinquishes its hold March 9.

* *ctrl+alt+delete*, by Anthony Clarvoe, makes its way to Otterbein's campus April 25 and ends May 4.

* The children's production, *The Secret Garden*, written by Pulitzer Prize winner Marsha Norman, runs from May 16 to May 25.

Tickets may be bought as a six-show season subscription, or individually, depending on the production.

Stefano encourages the season subscription.

"When you buy a subscription, you're making a promise to yourself that you're going to take time out from your life to go to the theater or go to a concert," he said.

Season subscriptions are \$65.

Individual tickets for *The Mikado* and *The Secret Garden* are \$16, while all other tickets cost \$14.

To reserve tickets, call the Otterbein College box office at 823-1109. The box office, located in Cowan Hall, 30 S. Grove St., is open 1 to 4:30 p.m. weekdays and one hour prior to performances.

Performances will take place at Cowan Hall, with the exceptions of *The Mikado*, which will be at Riley Auditorium in the Battelle Fine Arts Center, 170 W. Park St., and *ctrl+alt+delete*, held in the Campus Center Theatre, 100 W. Home St.

For more information about the season call 823-1209.

OHIO
NEWS BUREAU INC.
CLEVELAND, OHIO 44115
216/241-0675

OTHER PAPER
COLUMBUS, OH
M-CIRC. 50,000

OCT-18-2001



Just in time for late October, it's **A Midsummer Night's Dream**, Shakespeare's classic neo-psychedelic blaxploitation biker epic. That's the way Otterbein College Theatre might play it, anyway, in performances tonight through Saturday at 8 p.m. in Otterbein's Cowen Hall (30 S. Grove St., Westerville). \$14. 823-1109

Midsummer Night's Dream

OHIO
NEWS BUREAU INC.
CLEVELAND, OHIO 44115
216/241-0675

WESTERVILLE NEWS
WESTERVILLE, OH
W-CIRC. 6,386

OCT-10-2001

Otterbein to open 95th theater season

389 Otterbein College Theater will open its 95th season with Shakespeare's *A Midsummer Night's Dream* at 7:30 p.m. Thursday in Cowan Hall, 30 S. Grove St.

The play also will be performed at 8 p.m. Friday and Saturday and Oct. 18-20 and 2 p.m. Sunday.

Tickets at \$14 can be reserved by calling 823-1109. The box office is open from 1 to 4:30 p.m. weekdays and one hour prior to performances.

Haberkorn set to open piano series

The Otterbein College Keyboard Series will open its season with a faculty recital featuring Michael Haberkorn on piano at 8 p.m. today in Riley auditorium of the Battelle Fine Arts Center, 170 W. Park St.

The performance will include works by Haydn, Chopin, Ravel, Prokofiev and Diemer.

For more information call 823-1358.