

Otterbein University

Digital Commons @ Otterbein

The Lucinda Lenore Merriss Cornell Collection:
Ephemera

Lucinda Lenore Merriss Cornell Collection
(1855-1911)

1853

Thoughts Among Flowers

Unknown

Follow this and additional works at: https://digitalcommons.otterbein.edu/cornell_ephemera



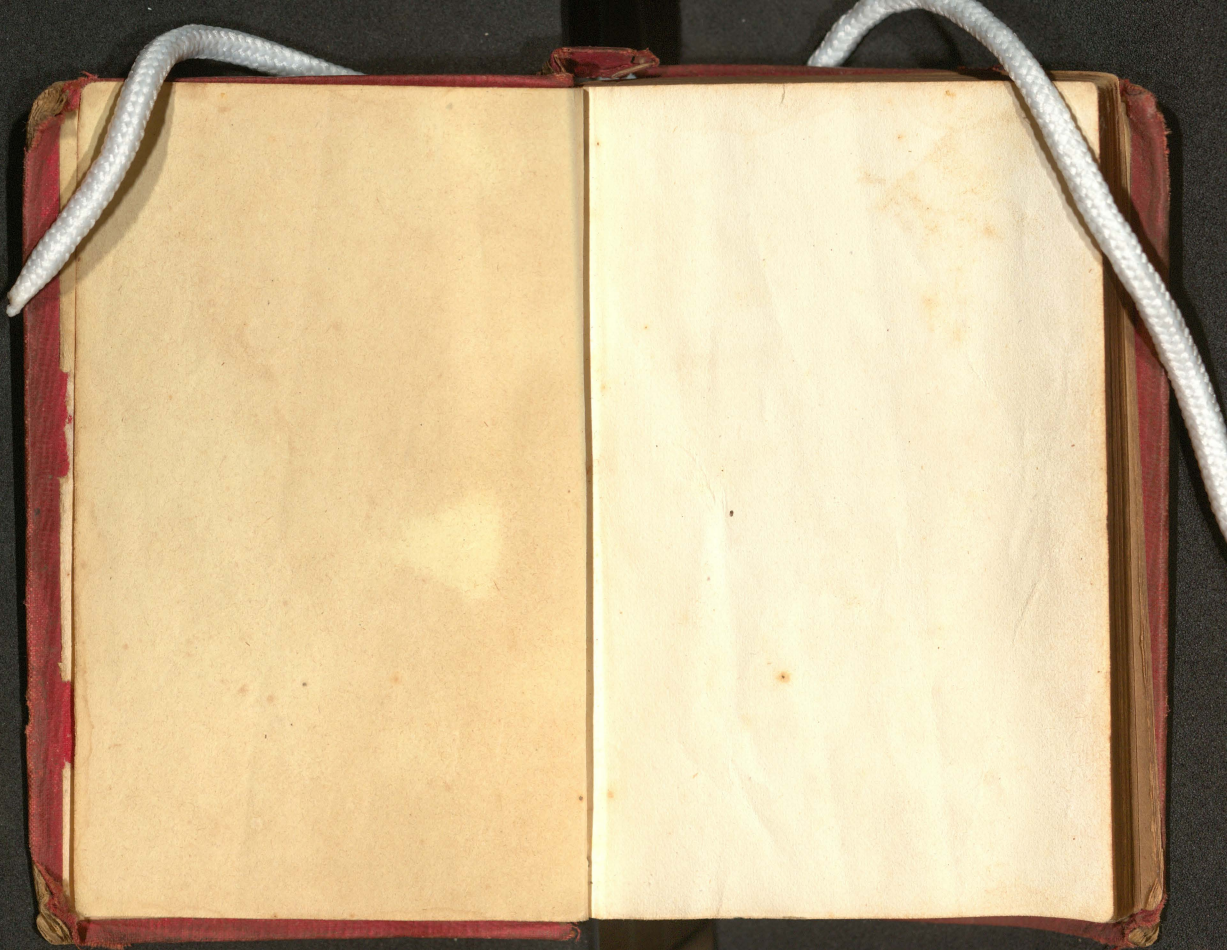
Part of the [Cultural History Commons](#), and the [United States History Commons](#)

1853

LUCINDA L. MERRIS
THOUGHTS
AMONG FLOWERS

Gift of Mrs. Merrius Cornell
Dec 9, 1992

L. L. Merrius.



THOUGHTS

AMONG FLOWERS.



NEW YORK:
PUBLISHED BY
LEAVITT & ALLEN,
27 DEY STREET.
1853.

CONTENTS.

3

CONTENTS.

	PAGE.
1 The CAMELLIA requires light, but not sunshine	7
2 The LAURUSTINUS, when destroyed by frost, rises again from the roots	11
3. The ROSE requires to be pruned, or it will speedily degenerate	14
4. The CACTUS will flower with shelter, and much light	16
5 The DAHLIA will strive to grow out of the shade	20
6. The PASSION FLOWER—the origin of its name	23
7. The SWEET VIOLET is discovered by its fragrance	27
8. The FUCHSIA, from the position of the flower, is only seen to advantage when above the spectator's eye	30
9. The MIMOSA has leaves of great susceptibility	34
10. The DODDER strangles the plant from which it drew its nourishment	37

	PAGE.
11. The BALSAM requires gradual enlargement of space	41
12. The SWEET WILLIAM, although perennial, is subject to decay	45
13. The MONKEY FLOWER requires cautious watering	49
14. The CACTUS does not bloom well with insufficient light	53
15. PINKS which bloom at the same time as the Carnation are not appreciated, although really beautiful	56
16. The SCARLET GERANIUM will recover in spring from the severity of its winter treatment	60
17. The AMERICAN ALOE dies when it has blossomed	63
18. CARNATIONS and PINKS are only valued when all the parts of their blossoms open equally	68
19. The CARTHUSIAN PINK bears many blossoms in rich, but few in poor soils	72
20. The INODOUROUS PINK is much admired for the liveliness of its color	74
21. The COCKSCOMB bears cold better than heat	77
22. The CHINESE ASTER deteriorates the soil in which it grows	80
23. The ARBUTUS takes a whole year to ripen its fruit	82
24. The DAHLIA requires to have its roots taken up in winter	86

	PAGE.
25. The SYRINGA will thrive even in the worst situations	89
26. The BIGNONIA drops its flowers before they fade	92
27. The AZALEA requires no pruning, except cutting off the dead wood	96
28. Self-sown plants are not generally valued by florists	100
29. Young plants ought to be kept free from weeds	102
30. Young plants perish, if moved before they have rooted well	106
31. Young plants, after removal, require great care until they have taken root in the new soil	109
32. Poisonous plants, as KALMIA, are generally attractive to the eye	112
33. The finest plants of the GERANIUM, and other species of flowers, are the most difficult to propagate	115
34. Some plants only thrive well in poor and sandy soils	118
35. Plants in windows always turn their blossoms to the light, in whatever position they may be placed	121
36. Emblems of Flowers	124

