

# OFFICIAL SCORE CARD

---

---

# FOOTBALL:



# Wittenberg

vs.

# OTTERBEIN

---

---

NOVEMBER 11, 1922

# Baumgardner Studio

H. B. Fry, Prop.



HIGH CLASS PORTRAIT WORK

Special Attention to Students

King Block

Fountain Ave.

Springfield, Ohio

## McCULLOCH'S

### Leather Store

THIS HAT BAG, \$3.00



Saf. Pak Laundry Case,  
\$1.50

40 East Main Street

## Mogador Silk

# Ties

\$1.50

## W. D. Alexander & Co.

Home of Hart, Schaffner & Marx



**GODFREY**  
Wittenberg Coach



**M. A. DITMER**  
Otterbein Coach

8 DRIVES **WELCOME** 10 TABLES

**Bowling--Billiards**

HEALTHFUL SPORTS

Finest Equipment in Central Ohio.

Make This Your Headquarters.

**The Recreation Club Co.**

16-18 North Limestone

North of Shawnee Hotel

### Wittenberg Schedule 1922

|                                   |                                      |          |
|-----------------------------------|--------------------------------------|----------|
| SEPT. 30<br>at<br>Greenville, Pa. | Wittenberg<br>vs.<br>Thiel           | 3<br>0   |
| OCT. 7<br>at<br>HOME              | Wittenberg<br>vs.<br>Muskingum       | 17<br>0  |
| OCT. 14<br>at<br>HOME             | Wittenberg<br>vs.<br>Western Reserve | 33<br>6  |
| OCT. 20<br>at<br>GRANVILLE        | Wittenberg<br>vs.<br>Dennison        | 27<br>20 |
| OCT. 28<br>at<br>DELAWARE         | Wittenberg<br>vs.<br>Ohio Wesleyan   | 6<br>27  |
| NOV. 4<br>at<br>HOME              | Wittenberg<br>vs.<br>Oberlin         | 6<br>18  |
| NOV. 11<br>at<br>HOME             | Wittenberg<br>vs.<br>Otterbein       |          |
| NOV. 18<br>at<br>HOME             | Wittenberg<br>vs.<br>Cincinnati      |          |
| NOV. 23<br>at<br>HOME             | Wittenberg<br>vs.<br>Ohio Northern   |          |

### STANDING OF TEAMS IN OHIO CONFERENCE

| Teams            | Won | Lost | Pct.  |
|------------------|-----|------|-------|
| Ohio Wesleyan    | 5   | 0    | 1,000 |
| Mt. Union .....  | 4   | 0    | 1,000 |
| Oberlin .....    | 3   | 0    | 1,000 |
| O. University..  | 2   | 0    | 1,000 |
| Wooster .....    | 4   | 1    | .800  |
| Akron .....      | 3   | 3    | .500  |
| Wittenberg ....  | 2   | 2    | .500  |
| Miami .....      | 2   | 2    | .500  |
| Denison .....    | 2   | 2    | .500  |
| Cincinnati ..... | 1   | 1    | .500  |
| Kenyon .....     | 1   | 2    | .333  |
| O. Northern....  | 1   | 3    | .250  |
| Otterbein .....  | 1   | 3    | .250  |
| Case .....       | 1   | 4    | .200  |
| Hiram .....      | 1   | 4    | .200  |
| West. Reserve    | 1   | 4    | .200  |
| Heidelberg ....  | 0   | 3    | .000  |

# “Quality Goods”

*The*

## *Leffel Baking Co.*

4 West High St.

Bell 1032

# NEW RULES FOR 1922

New rules this year make a big difference in the game. The new motor in the Franklin car gives more power, speed and economy than before. The car is also more comfortable than ever.

You can become familiar with new rules by reading a guide, but you must ride in the Franklin to appreciate its wonderful performance. You can experience a new sensation in motoring, and you are in no way obligated, by calling Ben G. Garver, Main 5050. You owe it to yourself to investigate this car.



**TROOP**  
Otterbein Guard



**FRANKLIN Copt**  
Otterbein



**STOLTZ**  
Otterbein Left End

## HOTEL SHAWNEE LUNCH ROOM

Open Day and Night

Wittenbergers Always  
Welcome

## Efficiency ARCH PRESERVERS

Are called efficiency shoes. They help you keep up to the point of greatest working efficiency.

WE FIT

Arch-Preserver Boot Shop  
41 East Main St.

Men



Women

# THE HOME CITY REAL ESTATE CO.

Fourth Floor Merchants and Mechanics Building

INVITES YOU

To become acquainted with the personnel of its organization and to thoroughly inspect the construction of all houses it builds for HOME BUYERS.

PAUL E. NOLLEN, Pres.

**WE BUY**  
**THE HOME YOU SHOULD OWN**

**WE BUILD**

**WE SELL**  
**List Your Properties With Us**

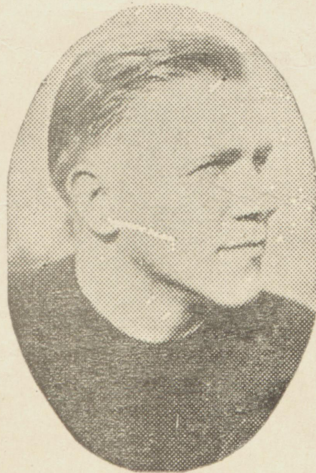
Football and  
Basketball  
Outfitters



Gymnasium Shoes,  
Clothing and  
Supplies

**Geo. E. Meek  
Company**

34 So. Limestone



SANNER



We Wish to Thank Our  
Advertisers!  
They Have Made This Program a Possibility!  
**PATRONIZE THEM!**



# H. H. McFARLAND

PIANOS  
PLAYER PIANOS

VICTOR  
RECORDS

VICTROLAS  
SONORAS

28 South Limestone Street

# LIFE INSURANCE

ERNEST C. JANSON AGENCY

811-12 Fairbanks Bldg.

AGENTS:

E. Grant Willyoung

Walter B. Evans

Leslie E. Carey

A. L. Rust (Lawrenceville)

F. M. Tavenner (Catawba)

Hon. T. A. Busbey (South Vienna)



**STOATZ**  
Otterbein Q. B.



**ANDERSON**  
Otterbein R. H.



**COLLIER**  
Otterbein R. G.

WHEN BUYING  
**BREAD**

Be Sure It's

**Schaefer's**

Phone 1700

# HANFORD & DRESLER

70 West Main St.

EVERY MAGAZINE PUBLISHED

Newspapers from All Cities

STATIONERY

NOVELS

PENNANTS

We Make Felt Pennants to Order.

## WITTENBERG LINE-UP:

|                  |                    |                     |                  |                    |                     |
|------------------|--------------------|---------------------|------------------|--------------------|---------------------|
| <b>Left End</b>  | <b>Left Tackle</b> | <b>Left Guard</b>   | <b>Center</b>    | <b>Right Guard</b> | <b>Right Tackle</b> |
| Criss (65)       | Tompkins(51)       | Gladdke (22)        | Repp (17)        | Sanner (18)        | Rohleder (21)       |
| Farmer (63)      | Axe (56)           | Kishman (52)        | Schweikert (14)  | Weidemire (57)     | Armstrong (60)      |
| McKaig (58)      |                    |                     |                  |                    |                     |
| <b>Right End</b> | <b>Left Half</b>   | <b>Quarter-Back</b> | <b>Full Back</b> | <b>Right Half</b>  |                     |
| Hummon (24)      | Borman (55)        | Compton (67)        | Eaton (54)       | Heberling (53)     |                     |
| Heltzel (23)     | Churchman (62)     | Batdorf (59)        | Ness (15)        | Lewis (13)         |                     |
|                  | Kipperman (61)     | Netz (16)           |                  |                    |                     |

Average Weight of Line, 168.

Average Weight of Backfield, 150.

# UNITED APPLIANCE CO.

"Electric Labor Savers for the Home."

If It's An Electric Appliance, We Have It!

PRICE :- QUALITY :- SERVICE

A GOOD COMBINATION

125 E. High St.

Care Light Co.

Both Phones 778



Phones 1492

Week Days and Sundays

**AUTOMOTIVE SUPPLIES**

**OILS AND GASOLINE**

**TIRES AND TUBES**

**VULCANIZING**

# THE H.G. ROOT CO.

Opposite Big Four Station

## OTTERBEIN LINE-UP:

|           |             |              |                    |                    |                |
|-----------|-------------|--------------|--------------------|--------------------|----------------|
| Left End  | Left Tackle | Left Guard   | Center             | Right Guard        | Right Tackle   |
| Stoltz    | Reck        | Collier      | Franklin (C) Troop | <del>Reckert</del> | <i>Richter</i> |
| Right End | Left Half   | Quarter Back | Right Half         | Full Back          |                |
| Ruffini   | Renner      | Stoatz       | Anderson           | McCarrol           |                |

# Fairbanks Billiard Parlors

Are Back of a Fighting Team

Returns From All the Collegiate Football Games in the United States

Bell Phone 2717

Home Phone 309

# The Brain McGregor Real Estate Company

## REALTORS

We Have Helped Others—May We Help You?

302 Arcue Bldg.

Both Phones 252

### THE LAGONDA NATIONAL BANK

Springfield, Ohio

Capital \$100,000

Surplus \$100,000

Undivided Profits

\$125,000

J. Warren Keifer,  
Pres't.

B. J. Wescott,  
V. Pres't.

Frank W. Harford,  
Cashier

H. C. Phillips,  
Ass't. Cashier

#### Directors

J. Warren Keifer

B. J. Wescott

F. C. Johnson

J. J. Hoppes

R. D. Patton

W. H. Bitner

E. L. Miller



REPP

Wittenberg Captain

#### GENERAL INFORMATION

TIME ..... 2 P. M.  
 PLACE ..... ZIMMERMAN FIELD  
 REFEREE ..... WELLS, OHIO STATE  
 UMPIRE ..... CORDRAY  
 HEAD LINESMAN ..... MAXWELL, OHIO STATE

Edw. C. Schmacker

Ursha Jobe

Fred C. Adams

# The Schmacker Market Co.

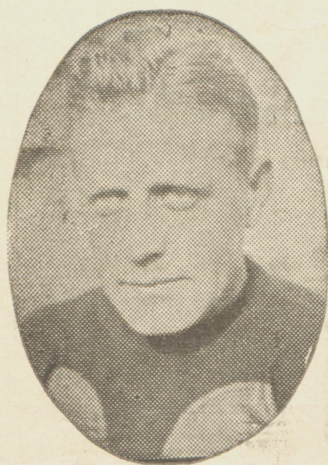
GROCERIES

MEATS

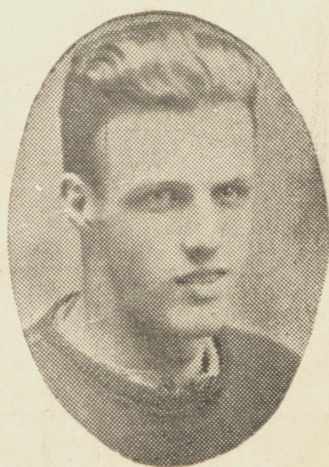
BAKED GOODS

Both Phones 1153

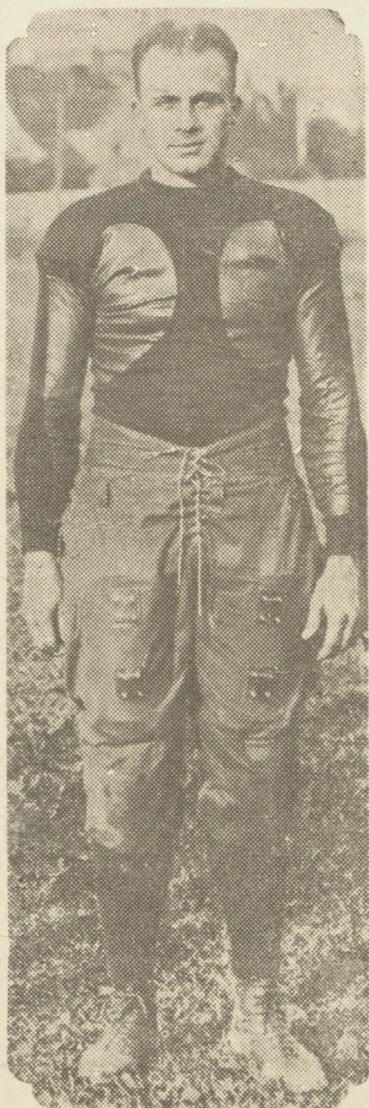
131-133 West Main



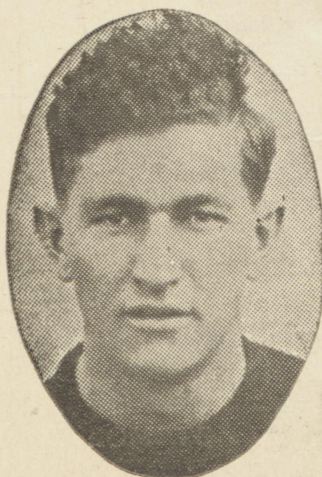
HEBERLING



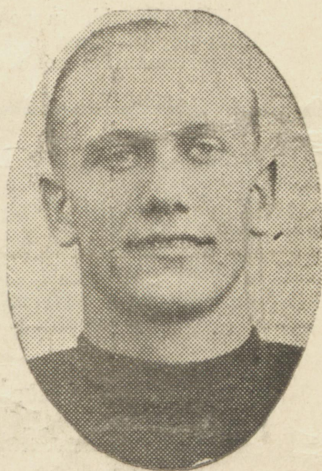
CRISS



KISHMAN



COMPTON



HUMMON



## ZIMMERMAN, ZIMMERMAN and ZIMMERMAN

Attorneys At Law



Zimmerman Bldg.

Springfield, Ohio.

### COMMON PENALTIES

#### Loss of Two Yards

Time taken out more than three times during a half

#### Loss of Five Yards

Violation of off-side rule; illegal positions.

Players attempting fair catch taking more than two steps after catch.

Interference with opponents before ball is put in play.

Delay of game.

#### Loss of Ten Yards

Intentional throwing of forward pass to ground.

#### Loss of Fifteen Yards

Interference with fair catch.

Pushing, pulling, interlocked interference.

Holding, by side in possession of ball.

Tripping, tackling, out of bounds.

Unsportsmanlike conduct.

#### Loss of Twenty-five Yards

Team not ready to play at start of second half.

#### Loss of Half Distance to Goal Line

Player disqualified for striking, kneeling, kicking.

#### Loss of a "Down"

Interference by side making forward pass prior to fourth down.

Forward pass striking ground prior to fourth down.

Illegal substitution (return to game).

#### Loss of Ball

Interference by defensive side in case of forward pass.

If forward pass be illegally recovered or touched by passer's side.

Offside player touching ball.

#### Disqualification

Striking, kneeling, kicking.

Cutting down (running into) opponent after ball is dead.

Bicycles

Motorcycles

## P. SLACK'S SONS

Guns, Pistols,  
Fishing Tackle, Etc.

Also General Line of  
Sporting Goods

Telephones 392

112 East Main

## WITTENBERG'S FAVORITE PRINTERS

Specializing  
on Fraternity  
Work

THE DASE PRINTCRAFT  
Company

5-7 West Columbia

*The Great American Mutual Indemnity Company*



Ohio's Largest and Strongest Automobile Insurance Company.

BRANCH OFFICE  
603 Arcue Bldg.  
C. S. Fess, Manager.

# FAR IN THE LEAD

The fact that approximately one car out of every ten in Ohio is insured by the Great American is convincing evidence that this progressive institution is "The People's Favorite Automobile Insurance Company."

## SCORE CARD

Score By Quarters

|                  | 1st | 2nd | 3rd | 4th | Total |
|------------------|-----|-----|-----|-----|-------|
| Wittenberg ..... |     |     |     |     |       |
| Otterbein .....  |     |     |     |     |       |

|                        | Wittenberg | Otterbein |
|------------------------|------------|-----------|
| First Downs .....      |            |           |
| Attempted Passes ..... |            |           |
| Completed Passes ..... |            |           |
| Penalties .....        |            |           |

10% Discount to Wittenberg Students

# DIAMONDS

Watches and Jewelry

On easy terms of payment. Why deprive yourself of a luxury of this nature, when by small weekly or monthly payments you can own any diamond, watch or piece of jewelry in our store?

Come in for your convenience; meet your friends; use our phones; at

**Sterling Jewelry Co.**  
5 West Main

10% Discount to Wittenberg Students

# HEAUME HOTEL

Students' Headquarters

Newest—Fireproof

Rates, \$1.50 Up

Restaurant Service  
Day and Night

J. S. HEAUME, Witt. '00



# Bancroft's

is just another  
name for good  
hats.

## WITTENBERG COLLEGE YELLS

### 1. "Yea Wittenberg"

Yea-a-a-a Wittenberg  
Yea-a-a-a Wittenberg  
Yea-a-a-a Wittenberg  
W-I-T-T-E-N-B-E-R-G  
Wittenberg

### 2. "Yea Team"

Yea-a-a-a Team  
Yea-a-a-a Team  
Yea-a-a-a Team  
FIGHT FIGHT FIGHT

### 3. "Locomotive"

Rah Rah Rah Rah  
Witten-berg Witten-berg  
Rah Rah Rah Rah  
Witten-berg Witten-berg  
Rah Rah Rah Rah  
Witten-berg Witten-berg  
Rah-h-h-h-h

### 4. "U Rah"

U U Rah Rah  
U U Rah Rah  
Who Rah Who Rah  
Wittenberg  
Rah Rah

### 5. "Hit 'em Hard"

Hit 'em Hard, Hit 'em Low  
Yea-a-a-a-a Wittenberg  
Let's Go

### 6. "Go Team Go"

Go Team Go, Go Team Go  
Hit 'em Hard, Hit 'em Low  
Go Team Go

### 7. "Sky-rocket"

(Men: Prolonged whistle)  
(Women: Prolonged hiss)  
Boom—Bah—Wittenberg

### 8. "Team Rah"

Team Rah  
Team Rah  
Rah Rah  
Team

### 9. "Nine RaHS"

Rah Rah Rah  
Rah Rah Rah  
Rah Rah Rah  
Team Team Team

### 10. "Bully For 'King'"

Bully For "King"  
Bully For "King"  
Varsity Varsity  
Rah

## The Troupe Drug Company

The 50 Year Old  
DRUG STORE

The College Drug Store  
The Old Reliable

## A COMMERCIAL AND SAVINGS BANK

In the heart of the  
Shopping District

Student accounts solicited and  
appreciated.

## FARMERS NATIONAL BANK

The Friendly Bank

# Brooks & Brooks

"INSURORS"

324 Bushnell Building.

Bell M-4810

## CHANGES IN THE RULES FOR 1922

Relating to substitution, a player taken out in one half cannot return in the same half, but a player who has been taken out in the first half may return to the game in the second half, not necessarily at the beginning of a period.

The Referee is permitted by a change in the rule to shorten the playing time at intermission, should he decide that darkness is likely to interfere with the completion of the game.

In Scoring, a new feature is introduced, called a "Try-for-point." Formerly a place-kick only was allowed for goal after a touchdown. Now the side scoring the touchdown is permitted to bring the ball out to any point not less than 5 yards from the goal line, or to any greater distance they choose, and there a scrimmage is formed, with the scoring side in possession of the ball. They can make any play which is legal from an ordinary scrimmage and endeavor to score by a place-kick, a drop-kick, a run, or a forward pass. Should they by any of these means in a single play put the ball over the goal line and secure a touchdown, or should they kick a field goal, any one of these successes yields them a single point. Immediately that the ball becomes dead without resulting in such a score, play ceases and the ball is taken back for a kick-off, as was done under the old method when the Try-for-goal had proven unsuccessful.

Have us make photographic records of Today — school-day memories that will be priceless in years to come.



**CREGAR STUDIO**

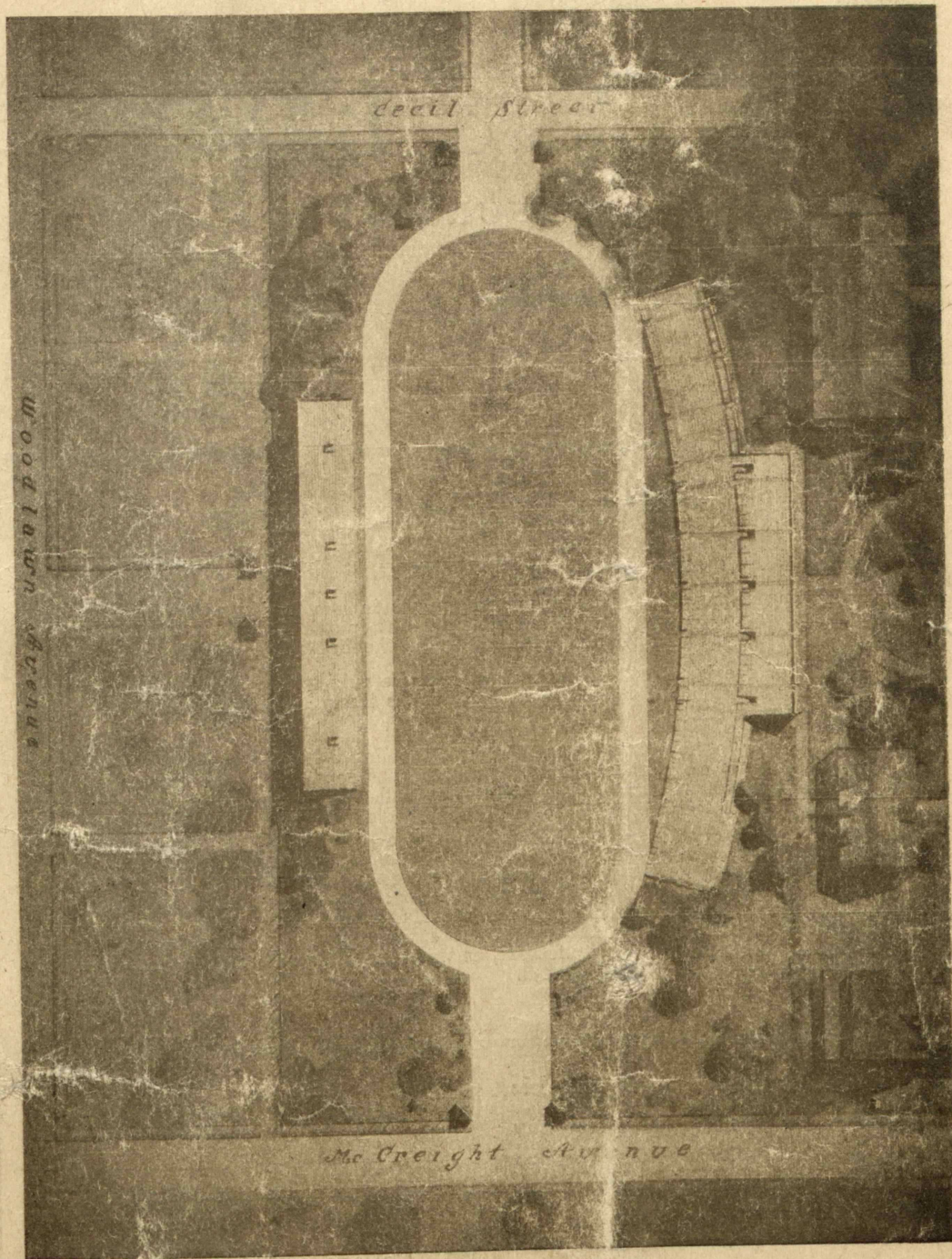
304 Arcue Building.

## The College Book Store

College and Fraternity Jewelry, Pennants, Stationery. Circulating Library of the latest and best books. Mail order books. Laundry cases.

**Make It Your Headquarters.**

Lagonda Bank Building



Oblique Airplane View, from the East,  
of Wittenberg Stadium.