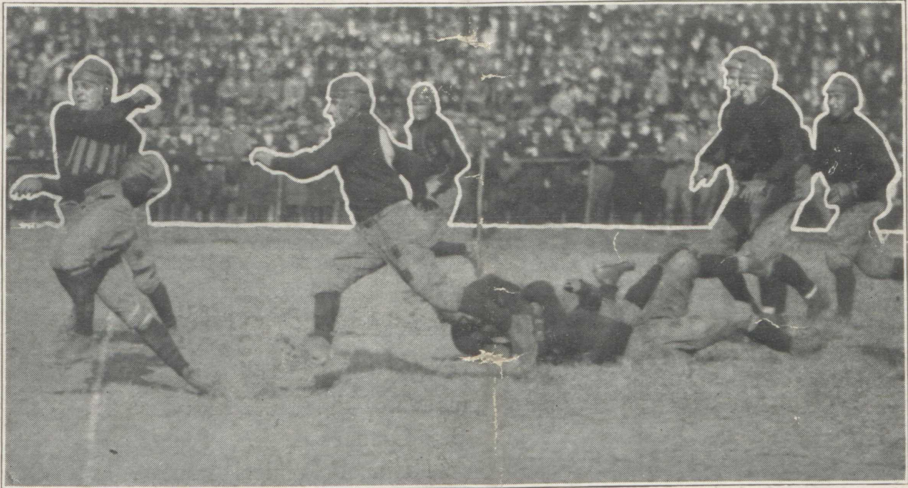


CASE  
VS.  
OTTERBEIN



Saturday October 11th, 1924

2:15

Van Horn Field

## FOOTBALL SCHEDULE

-- 1924 --

October 11	-	-	-	Otterbein at Case
October 18	-	-	-	Mt. Union at Alliance
October 25	-	-	-	Hiram at Case
November 1	-	-	-	Oberlin at Oberlin
November 8	-	-	-	Wooster at Case
November 15	-	-	-	Baldwin-Wallace at Berea
November 22	-	-	-	Reserve

### Alumni Homecoming November 8th.

"Case and Reserve Alumni and their friends are cordially invited to attend the noon luncheon of the Cleveland Case Club at Hotel Winton Tuesday October 14th. Senator Simeon D. Fess speaks on "National Political Issues". Admission cards can be obtained at Alumni Office.





PRESIDENT CHARLES SUMNER HOWE

# OTTERBEIN

No.	Position	Player
27	L. E.	Raffini
24	L. T.	Seibert
49	L. G.	Durr
39	C.	Reck Capt.
48	R. G.	Lambert
31	R. T.	Richter
33	R. E.	Poraski
35	Q.	McCarroll
41	L. H.	Snively
25	R. H.	Renner
29	F. B.	Carroll

## PLAYERS

23. Shear, C.	35. McCarroll, Q.
24. Seibert, T.	37. Miller, G.
25. Renner, H. B.	39. Reck, C., Capt.
27. Ruffini, E.	41. Snively, H. B.
29. Carroll, F. B.	45. Collier, G.
31. Richter, T.	46. Beelman, H. B.
32. Felton, T.	47. Widdoes, H. B.
33. Porosky, E.	48. Lambert, G.
49. Durr, G.	

Referee - Roudebush, Denison  
 Umpire - Weygant, Wooster

Heads Lineman - Schuele Reserve

# CASE

No.	Position	Player
10	L. E.	Getzendanner
13	L. T.	Whitlock
8	L. G.	Frease
2	C.	Crass
7	R. G.	Brill
3	R. T.	Miller
24	R. E.	Doll
5	Q.	Douda
1	L. H.	Gribben, Capt.
4	R. H.	Van Horn
12	F. B.	Robinson

## PLAYERS

- |                          |                      |                   |
|--------------------------|----------------------|-------------------|
| 1. Gribben, H. B., Capt. | 9. Focke, C.         | 17. Frato, H. B.  |
| 2. Crass, C.             | 10. Getzendanner, E. | 18. Glidden, G.   |
| 3. Miller, T.            | 11. Bennington, E.   | 19. Cerney, G.    |
| 4. Van Horn, H. B.       | 12. Robinson, F. B.  | 20. Reeves, H. B. |
| 5. Douda, Q.             | 13. Whitlock, T.     | 21. Edwards, E.   |
| 6. Galaba, H. B.         | 14. Alden, E.        | 22. Pryor, H. B.  |
| 7. Brill, G.             | 15. Heidloff, G.     | 23. Hester, T.    |
| 8. Frease, G.            | 16. Byrns, T.        | 24. Doll, E.      |
|                          | 25. Schultz          |                   |

Time of Quarters 15 Minutes.





Coach Bob Fletcher, Asst. Art Winters.

A few of the Boys



Roge Whitlock  
Tackle



Captain Billy Gribben  
Half



Don Hester  
Tackle



Alex Galaba  
Half



Connie Robinson  
Fullback



Elmer Brill  
Guard





Published by The Case Athletic and Alumni Association.