

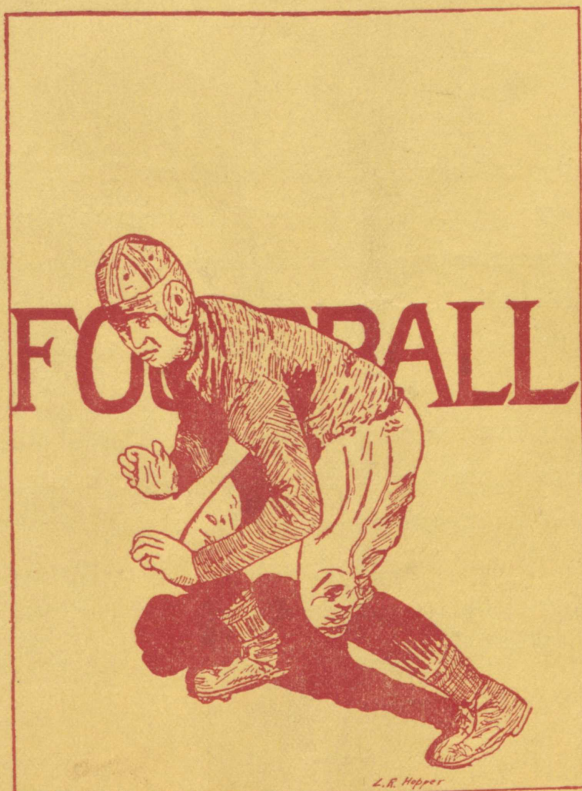
# HOME COMING

## *Program*

MUSKINGUM vs. OTTERBEIN

*Otterbein Gridiron*

Otterbein  
Room



*Saturday, October 30th, 1926*  
WALTER CAMP MEMORIAL GAME  
Westerville, Ohio

PRICE **25c**





# This Is The Walter Camp Memorial Game



Today is known as "Walter Camp Day". Between halves of the game a collection will be taken to help pay for the memorial gate way that will be erected at Yale University in New Haven in his honor. All of the Universities and Colleges of the United States have been asked to contribute to this fund. It has been recommended by the Ohio Board of Managers that an addition of ten cents be made to the admission charge of the game but Prof. R. F. Martin thought that such would be too compulsory and has arranged that all who care to may contribute at the game. If Otterbein raises fifty dollars at the game her name will be printed on a plate and be placed with the rest of the names in a conspicuous place on the memorial.



THIS PROGRAM PUBLISHED  
UNDER AUSPICES OF STUDENT COUNCIL



# Our Own Prexy Welcomes You



WALTER GILLAN CLIPPINGER, A. B., D. D., LL.D.  
President of the College

## WELCOME ALUMNI!!

Today you return to your college Alma Mater. Next to home there is no place like one's college. We welcome you back as sons and daughters, brothers and sisters of a great growing family. The president welcomes you, the Faculty welcomes you, the students welcome you, and the townspeople welcome you. The very trees of the old campus seem to clap their hands and rejoice at your return.

All of us wish you a happy stay among us.

Congratulations and success to you in your home life and work.

Sincerely yours,

*W. G. Clippinger*



# THE UNIVERSITY BOOK STORE

HAS WELCOMED BACK THE OLD GRADS FOR  
OVER A QUARTER OF A CENTURY.

ONCE MORE WE EXTEND A  
HEARTY WELCOME TO YOU.

## NOW!

LET'S ALL GET DOWN ON  
THE SIDE LINE AND CHEER  
THE TEAM TO VICTORY.

## AFTER

The Game Visit The  
University Book Store.



## PROGRAM FOR THE DAY

- 9:00—Pep Rally and Lid Lifter in the Chapel.  
10:30-12:00—Housewarming and Dedication Activities in King Hall.  
Everybody invited to visit the newest building on the campus.  
12:30—Dinner Meeting of the Alumni Athletic Club in charge of F. E. Sanders, to which all interested alumni are invited.  
1:30—Parade led by the College Band.  
2:30—Game with our old rival, Muskingum.  
6:00—Annual Banquet in basement of U. B. Church—short, snappy program. Places for all who come—nobody will be turned away.  
9:00—Social Group Reunions.

### SUNDAY A. M.

- 9:30—Sunday School operating under a new plan.  
10:45—Morning Worship Service.

## *Hallowe'en Is Here !*

DON'T FORGET THE PLACE WHERE YOU  
GET THE GOOD HOME-MADE PUMPKIN PIES  
AND GINGER BREAD—IT IS THE

## STATE STREET BAKERY

39 N. STATE ST.

GASHO & SON

PHONE 81-W.





## TAN MEN WHO WIN FAME



Front: McMichael, Snavely, Widdoes, Crawford, Richter (Captain), Cavanaugh, Felton, Schear, Miller.

Middle: Roby, Minnich, Pilkington, Yochum, Reigle, Bishop, Lambert, Renner.

Back: Gohn (Manager), Schott, Yohn, Barnes, Hicks, Drexel, Coach Ditmer.

*Yea! Otterbein, Beat Muskingum*

*Dry Goods Notions Hosiery*

*Underwear Novelties*

BUTTERICK and FASHIONABLE  
DRESS Patterns

ULRY & SPOHN

31 N. State Street



## Who's Who On The Otterbein Squad

JERSEY NO.	NAME	HOME TOWN	WEIGHT	POSITION
	Bauer	Batavia, O.	138	L. T.
	Charles	Westerville	156	R. G.
33	Cline	Rosburg, O.	146	L. G.
34	Crawford	Westerville	156	Q. B.
	Day	Westerville	142	R. G.
86	Drexel	Cincinnati	145	H. B.
39	Gearhart	Bucyrus, O.	173	L. T.
	Hudock	Latrobe, Pa.	165	R. T.
53	Lambert	Westerville	157	R. G.
	McGill	Moundsville, W. Va.	164	R. T.
56	Minnich	Greenville	151	R. E.
31	Pilkington	Westerville	134½	H. B.
57	Pinney	Westerville	163	F. B.
45	Reck	Greenville	185	L. T.
46	Riegel	Dawn	190	L. E.
37	Scheer, M.	New Philadelphian	171	C.
	Scheer, L.	New Philadelphia	147	L. G.
	Schott	Westerville	132½	H. B.
54	Snavely	Westerville	151	H. B.
58	Saul	Camp Hill, Pa.	157	R. T.
	Wales	Youngstown	149	H. B.
83	Wurm	Westerville	163	F. B.
35	Weaver	Clayton	140	H. B.
38	Yochum	Mowrystown	159	L. G.
	Yantis	Westerville	163	L. E.

*T for you 2, Alumni*

AFTER THE GAME,

YOU WILL FIND ENJOYMENT, RELAXATION, AND A

VARIETY OF APPETIZING FOOD AT

*The* Tea for Two Tea Room

3 Doors East of U. B. Church

*"Pleasing To The Most Discriminating"*



## BLACK and MAGENTA'S GRID MEN



Top row—Taylor, G. Clark, Bain, Shane, Orr, Ballantyne, R. Clark, Frack, Larrick, Ogg, J. Moore, Heed.  
Middle row—Minteer, Caldwell, Ra. Hockman, French, Groh, Vernia, Trunice, Selby, R. Wilson, W. Moore, C. Hockman.  
Bottom row—Coach Lange, Montgomery, McConagha, Liggett, Brown, Garrett, Metz, Beavon, W. Wilson, Bell, Coach Stone.

# B. W. WELLS

## *The TAILOR*

### GLOBE CLOTHES

### DRY CLEANING and PRESSING

### *Quality and Workmanship*



## Who's Who On The Muskingum Varsity

JERSEY NO.	NAME	HOME	WEIGHT	POSITION
74	J. Moore, (Capt.)	Lawrence, Pa.	172	Tackle
80	Groh	Frankfort, Germany	210	Guard
42	Caldwell	Waverly	167	Tackle
70	Vernia	Wellsville	168	End
73	Ballantyne	Xenia	190	Guard
8	Garrett	Bellaire	150	Center
30	Fox	Millersburg	180	Tackle
72	French	Martins Ferry	162	Tackle
45	Liggett	Philadelphia, Pa.	165	End
64	Bain	New Concord	170	Center
78	Beavon	Martins Ferry	153	Center
63	W. Wilson	New Concord	129	Quarterback
69	McConagha	New Concord	147	End
60	Bell	Carrollton	160	Quarterback
36	Duff	New Concord	155	Full Back
67	Orr	Wellsville	165	Half Back
43	Ogg	New Concord	180	Guard
65	Shane	Bridgeville, Pa.	173	Tackle
82	Heed	Cambridge	166	Full Back
83	Harrop	Shawnee	188	Tackle
71	Larrick	Pleasant City	154	Half Back
35	Frack	Unity, Pa.	168	Tackle
75	G. Clarke	Indiana, Pa.	170	End
68	R. Clarke	Indiana, Pa.	163	Half Back
77	Selby	Martins Ferry	167	Full Back
79	Brown	Bellaire	140	Half Back
66	W. Moore	New Concord	170	Guard
39	Metz	Pittsburg	165	Center
40	Minitier	New Concord	161	Half Back
47	Trunice	Lorain	185	Full Back

DRY GOODS

NOTIONS

HOSIERY

Try MINNEHAHA the  
\$1

Hose, made in 26 colors

California Ladies Hose

Ribbed, Black, and five Light Colors. They  
wear and look well. Priced

50c



HUHN



## SCORE CARD

	FIRST QUARTER	SECOND QUARTER	THIRD QUARTER	FOURTH QUARTER	TOTAL
OTTERBEIN					
MUSKINGUM					

### OFFICIALS

DUNLAP of Denison, Referee. WESSLING, Umpire. E. C. RUPP, Denison, Headlinesman.

### WHAT OTTERBEIN AND MUSKINGUM USED TO DO

1905 .....	Otterbein, 15; Muskingum, 0	1916 .....	Otterbein, 21; Muskingum, 0
1906 .....	Otterbein, 0; Muskingum, 30	1917 .....	Otterbein, 0; Muskingum, 6
1907 .....	Otterbein, 5; Muskingum, 2	1918 .....	Otterbein, 0; Muskingum, 20
1909 .....	Otterbein, 16; Muskingum, 0	1920 .....	Otterbein, 0; Muskingum, 24
1909 .....	Otterbein, 17; Muskingum, 0	1922 .....	Otterbein, 26; Muskingum, 6
1911 .....	Otterbein, 30; Muskingum, 0	1923 .....	Otterbein, 0; Muskingum, 0
1912 .....	Otterbein, 12; Muskingum, 0	1924 .....	Otterbein, 20; Muskingum, 13
1914 .....	Otterbein, 20; Muskingum, 0	1925 .....	Otterbein, 0; Muskingum, 13
1926 .....	Otterbein, ?; Muskingum, ?		

# LEVI STUMP

## *Barber*

### 37 North State Street



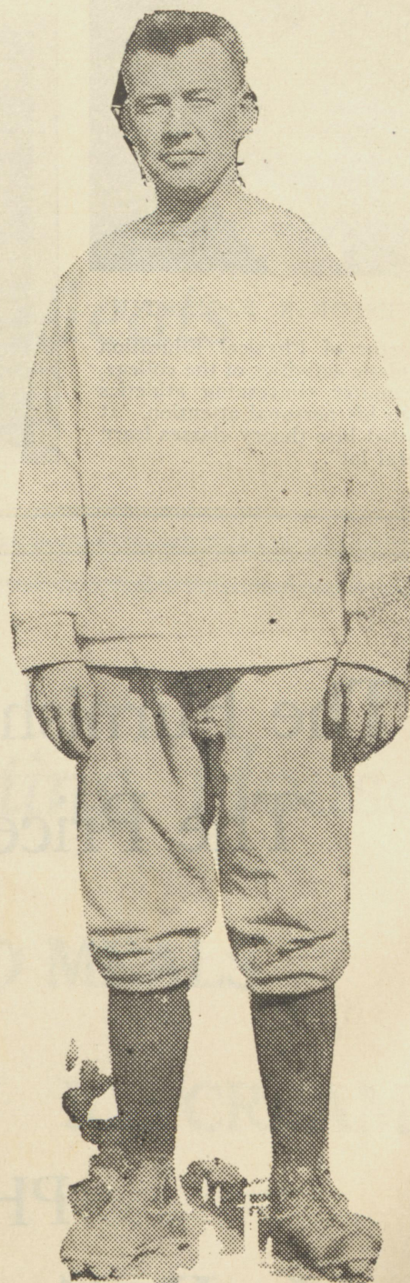
*New Victor  
Records  
Every  
Friday*

Come In And  
Hear Them  
on the  
*New  
Orthpohonic  
Victrola*



**William's**  
MUSIC STORE

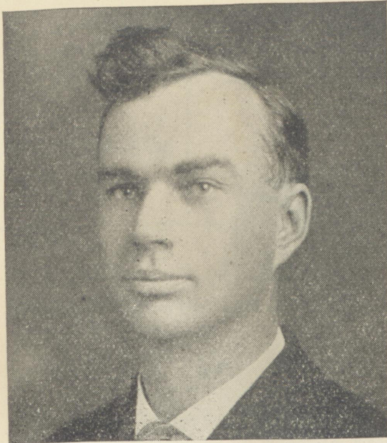
*Mentor Of  
Otterbein Football*



COACH DITMER



## Big Men In Otterbein Athletics



PROFESSOR R. F. MARTIN

Is Director of Physical Education and Athletic activities of the college. Every matter concerning athletics comes to his personal attention. It is said that his theory classes learn "an awful lot".

CAPTAIN SNAVELY  
("Slippery")

Captain Snavely is a graduate of Westerville High School where he held back-field positions on the high team. This is his third and last year of varsity experience.



COACH R. K. ("Deke") EDLER

Put the Varsity basketball men through a season with a maximum of wins. "Deke" also coaches the freshman football squad and assists with the varsity football men in the fall.

# The Furnishings You Need At The Prices You Can Pay



PHONE 11  
H. P. Sammons & Co.



# WOLF'S MEAT MARKET



*Fancy Cut Meats*

*Everybody's Eating House*

HOME COOKED MEALS

PIES - CAKE - ICE CREAM

*Hitt's Restaurant*

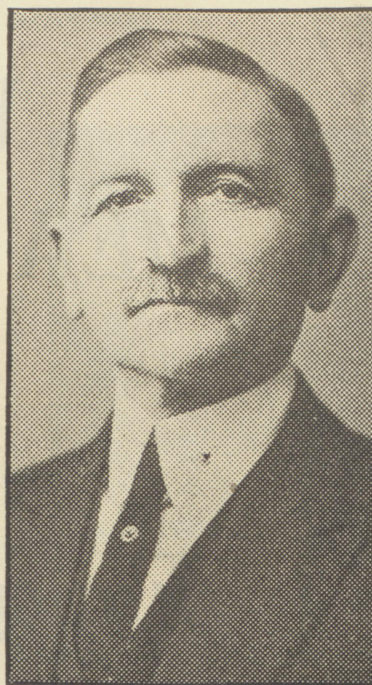


## *The Man Who Helped Build Muskingum*

---

Dr. J. Knox Montgomery was inaugurated president of Muskingum College in 1904, and centered his entire efforts towards the building up of the college. So well has he succeeded that the College campus has grown from about one acre in size until it now encompasses 102 acres, and the student attendance, which was less than 100 when he took up his work, has increased until this fall there is an enrollment of 850 in the four college classes.

Dr. Montgomery is a man of great vision, especially with reference to the continued growth of the College, yet withal he is comprehensive and practical in his efforts.



J. KNOX MONTGOMERY  
President of Muskingum College

## Seven Days Without Food Makes One WEAK



BUY  
YOUR GROCERIES and SUPPLIES  
AT  
N. B. Smith's Grocery

21 North State Street

Phone 6



*Muskingum's Varsity "M" Association*



*Everything At  
The Right Price*

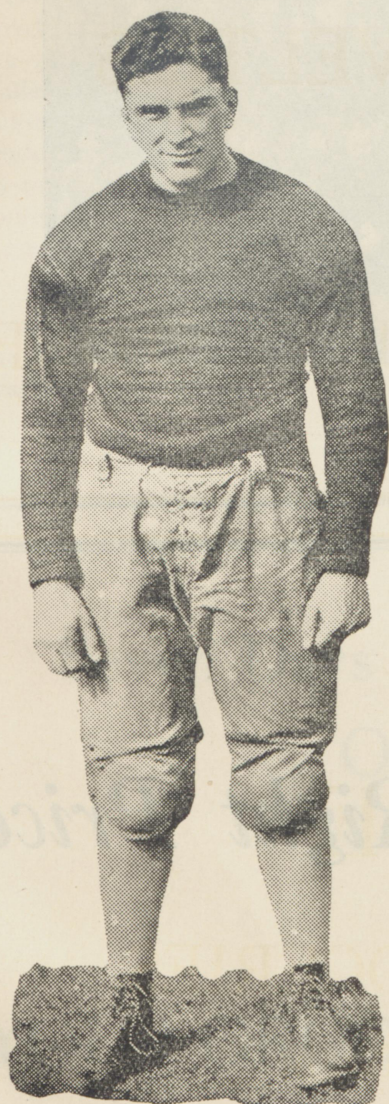


GEORGE FARNLACHER  
*Jeweler*

4 East Main Street



*Captain of  
Black and Magenta's*



CAPTAIN JAMES D. MOORE

Captain Moore came to Muskingum from Cecil High School, Cecil, Pa. While in high school he played in the backfield but was shifted to the line when he tried out for the Muskie team. He has played for three years at this position and has been a vital factor in Coach Lange's defense.

*Buy Your*

*1927*

*SIBYL*

*Early*

---

*THE BEST  
EVER*

---

SEE  
Waldo Keck

Circulation Mgr.



*Welcome Alumni !*



**CANDY and NOVELTIES**



**WESTERVILLE VARIETY STORE**

**J. F. NYE**

**MEATS and GROCERIES**

Open Late Every Night

24 N. STATE STREET    PHONE 483 W-1



*Athletes Make Up Otterbein's Varsity "O"*



WELCOME ALUMNI!

Orders For Your  
Luncheon and Dinners Will Receive  
Special Attention At

FREEMAN'S GROCERY

1 S. State Street



# E. J. NORRIS & SON

MEN'S INTER-WOVEN

FANCY  
HOSIERY

48c, 75c, \$1,  
\$1.50, \$2.50

Fancy Lisle, Silk  
and Silk and  
Wool



LADIES PHOENIX

SILK HOSE

\$1

\$1.50

\$1.85



# FURNITURE

LOW OVERHEAD

LOW PRICES

HIGH QUALITY

**JOHNSON FURNITURE CO.**

G. R. KERSHAW, Mgr.

15 North State Street

Westerville, O.



## COMMON PENALTIES

### LOSS OF FIVE YARDS

1. Violation of the offside rule, which includes:
  - (a) Lineman or backs illegally in motion when the ball is snapped.
  - (b) Any player of the kicking side ahead of the ball when it is kicked at the kickoff.
  - (c) Attempts to draw opponents into charging before the ball is snapped.
2. Unreasonable delay by a team, usually evidenced by calling signals several times before the ball is snapped.
3. Running into the kicker after he has kicked the ball.
4. Failure of substitute to report to referee when entering the game.
5. Unfair play not specifically covered in the rules.
6. Time called more than four times during a half at the request of the captain of the team.
7. Defensive player holding an offensive player.
8. For each incomplete forward pass during the same series of four downs over the first one. (Only one permitted without penalty.)
9. Crawling by the man in possession of the ball.

### LOSS OF 15 YARDS

1. Substitute communicating with players before the ball is put in play.
2. Interference with a man who has signaled for a fair catch.
3. Throwing player to the ground after he had made a fair catch.  
Offensive player pushing or pulling the man carrying the ball.
5. Offensive player holding a defensive player.
6. Players of the side making a forward pass interfering with defensive players after the ball is passed.
7. Deliberately roughing the kicker after he has kicked the ball.
8. Piling up on players who are down.
9. Tackling a man after he has run out of bounds.
10. Offensive player tripping an opponent.
11. Sideline coaching.
12. Intentional throwing of forward pass to the ground.
13. For hurdling.

## "HERE'S HOWDY"

"A HEARTY WELCOME TO ALL OUR  
OLD FRIENDS, THIS HOME-COMING  
AND MANY MORE."



## The "UP to DATE" PHARMACY

Ritter & Utley, Props.

DRUGS, MEDICINES, SUNDRIES, ETC.

SAME OLD STAND

44 N. STATE ST.



## COMMON PENALTIES

### CONTINUED

#### LOSS OF 25 YARDS

1. Clipping.
2. Delaying start of first or third periods.

#### LOSS OF HALF DISTANCE TO GOAL LINE

1. Return of the player to the game who has previously been in that same half.
2. Disqualifications of a player for rough play.
3. Any foul occurring inside the opponent's one-yard line.

#### LOSS OF A DOWN

1. Illegal or incomplete forward pass.
2. Forward pass striking the ground.
3. Forward pass touched by two eligible players of the passing side.
4. Forward pass going out of bounds on the fly.
5. Recovery of blocked kick by kicking side, regardless of which side blocked it.

#### LOSS OF BALL

1. Ball kicked out of bounds unless touched in the field of play.
2. Illegal use of hands or arms to prevent an opponent from securing loose ball.
3. Forward pass touched by ineligible player of the passer's side.

4. Interference by defensive side under a forward pass.

5. Failure to advance the ball 10 yards in four downs.

6. Kicking or kicking at a loose ball.

7. Player on the kicking side who is ahead of the ball when it is kicked and touches the ball before it touches an opponent.

#### FORFEITURE OF GAME

Refusal to abide by referee's decision or to play within two minutes after being ordered to do so by the referee.

#### IMPORTANT NOTE REGARDING TIME OUT

Time is automatically taken out during a try for point after a touchdown, after a safety or a touchback, after fair catch has been made, after an incomplete forward pass, during enforcement of all penalties, when the ball goes out of bounds, or when for any reason play is suspended by the referee. Time shall not begin again, after any of the aforesaid, until the ball is actually passed back from center.

## *An Otterbein Student*

Wants the choice things, both Ancient and Modern. We  
have collected objects of arts from all over the world.



FLOWERS AND GIFTS FOR ALL OCCASIONS

"Come In and Browse Around"

## GLEN-LEE GIFT SHOP

14 S. STATE STREET



## OTTERBEIN'S 1925 FROSH GRIDDDERS



Front: Brenner, Rosselot, Mendenhall, Mumma, Mraz, Davis, Hall, Day, Gates.  
 Middle: Coach Edler, Wilson, Charles, Thompson, Saul, Himes, Weaver, Yantis, Moody,  
 Flegal (Manager).  
 Back: Huffer, Laporte, German, Reigle, Reigle, Shankleton, Fryberger, Myers, Surface  
 (Manager), Shoemaker (Manager).

ALUMNI

STUDENTS

*Meet Your Friends At*

# WILLIAMS

LUNCHES - CANDY - SODA

HALLOWE'EN SUPPLIES

CONFETTI

CANDY SPECIALTIES



## OTHER FOOTBALL GAMES FOR TODAY

### At Home

Bluffton  
Rio Grande  
Defiance  
Frankfort  
Heidelberg  
Holy Cross  
John Carroll  
Mt. Union  
Oberlin  
Ohio Wesleyan  
St. Xavier  
Toledo  
Western Reserve  
Cedarville  
Columbia  
Dartmouth  
Notre Dame  
Yale

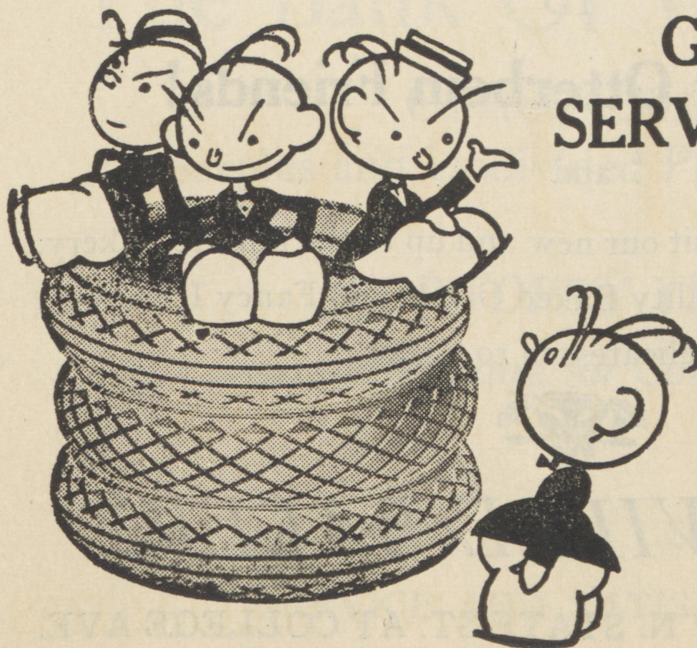
### Visiting

Capital  
Urbana, at Jackson  
Cedarville  
Wilberforce  
Ohio Northern  
Dayton  
Adrian  
Hiram  
Case  
Ohio University  
Marshall  
Findlay  
Cincinnati  
Defiance  
Cornell  
Brown  
Georgia Tech.  
Army

# 3 C TIRE SHOP

**GOODYEAR  
SERVICE STATION**

**GASOLINE  
and OIL**



**9  
So. State Street**



## *Men's New Dormitory For Otterbein*



**KING HALL**

King Hall, Otterbein's newest building project, is the result of an agreement entered into between officials of Otterbein and Dr. and Mrs. John R. King, for a number of years heads of the Otterbein Home near Lebanon, Ohio.

The new hall for men will accommodate 75 men with rooms and about 150 men in the Commons club which is situated in the basement.

Dr. and Mrs. King are giving their entire time and resources toward their new project. The building was started last April and was ready for occupancy at the beginning of school with the exception of a few minor details.

# *A Hearty Welcome*

TO

## **Our Many Otterbein Friends!**

and

A cordial invitation to visit our new and up to the minute Bakery.  
We have a full line of quality Baked Goods and Fancy Ice Cream  
and Delicatessen to Order.



# *WESTERVILLE BAKERY*

PHONE 45

7 N. STATE ST. AT COLLEGE AVE.



## HELP OTTERBEIN BUILD A NEW GYM



## The Bank Of Westerville

Capitol, \$30,000

Surplus and Undivided Profits, \$30,000.

**FOR FORTY YEARS**

*A Conservative Bank for Conservative People.*

BANK WITH US FOR  
SERVICE AND SATISFACTION



"J. C."

"SATAN"

"BONES"

## THE STUDENT'S SHOP

WELCOME, OLD "GRADS"—GLAD  
TO SEE YOU.

Don't forget to give us a call before you  
leave. Our store is always headquarters  
for old "has-beens".

If you need a Shirt or perhaps a New  
Tie, our New Fall lines are here in all  
their glory ..... \$1.00 to \$3.00



COPYRIGHT  
Widener

GOOD LUCK AND BEST WISHES

# J. C. FREEMAN & CO.

*Love may be blind but it's  
never handicaped by dim lights*

Candy is also a famous helper of  
Cupid's--- Take her some of ours

*The Rexall Store*



# Otterbein Love Song



## I

In a quiet, peaceful village,  
There's one we love so true;  
She ever gives a welcome  
To her friends both old and new.  
She stands serene 'mid tree-tops green;  
She's our dear Otterbein.

## CHORUS

Old Otterbein, our college,  
We sing of thee today;  
Our mem'ries 'round thee linger  
In a sweet and mystic way.  
O, Otterbein, we love thee!  
Our hearts are only thine;  
We pledge anew we will be true,  
Dear Otterbein.

## II

Her halls have their own message  
Of truth and hope and love;  
She guides her youths and maidens  
To the life that looks above.  
Her stately tower speaks naught but power  
For our dear Otterbein.





Wayne V. Harsha, Editor

A. O. Barnes, Business Manager

The Buckeye Press