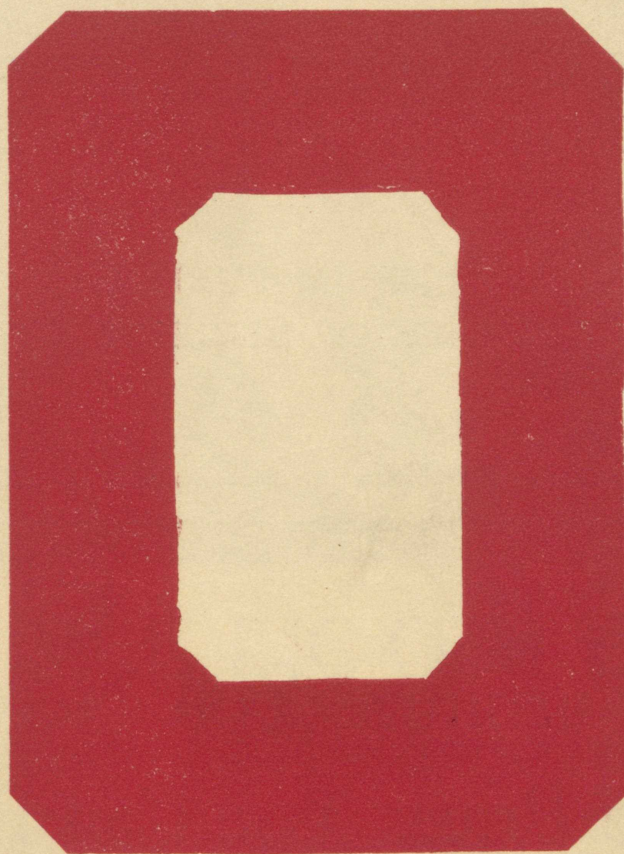


AB Leans *Present*

Football
HOMECOMING
Program



Baldwin-Wallace vs. Otterbein

WESTERVILLE, OHIO

SATURDAY, OCTOBER 22, 1927

Price **25c**

Game Called 2:30 p.m.

Program for the Day

RALLY, COLLEGE CHAPEL	10:00 A. M.
FOOTBALL PARADE	1:30 P. M.
FOOTBALL GAME	2:30 P. M.
BANQUET, U. B. CHURCH	6:30 P. M.
SOCIAL GROUP REUNIONS	9:30 P. M.

THIS PROGRAM PUBLISHED
UNDER AUSPICES OF STUDENT COUNCIL

The Furniture You Need At
The Prices You Can Pay



H. P. SAMMONS & CO.

Westerville, Ohio



WELCOME

To the Alumni and Friends of Otterbein:-

Again we welcome you back to the old school. Each succeeding year adds richness of meaning and life to the institution. Age develops traditions and sentiment. The number of graduates is increasing rapidly. It has doubled in the last thirteen years.

We welcome you to the beautiful campus—to the buildings with their conveniences and facilities, but we welcome you most to what is greater still—the spirit of the campus.

We trust that your stay here will be happy and comfortable. If we have left anything undone, give us a gentle hint or make a direct call upon us.

We are your friends and our interests are mutual. We wish you great success in your own personal enterprises.

Very cordially yours,

W. G. Kippinger

ONCE AGAIN
WE EXTEND
A VERY
HEARTY
WELCOME
TO ALL OF
THE
ALUMNI

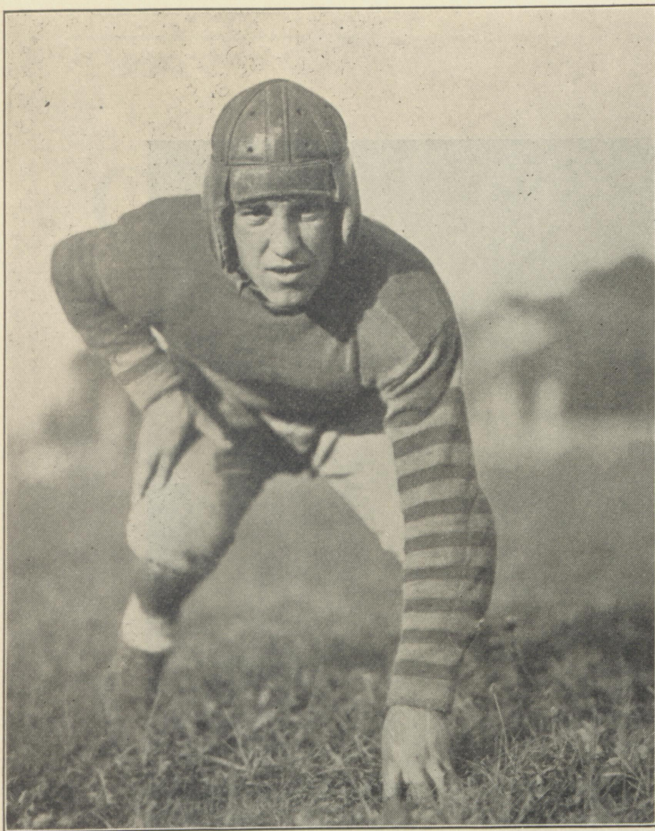
The
UNIVERSITY
BOOKSTORE



A. B. SEARS

Coach Sears came to Otterbein as varsity coach this fall from Bellaire, Ohio, where he established a fine record as high school football coach. He is a graduate of Wooster. Introducing a new system of football coaching to the Otterbein squad he has made great strides of progress thus far this year, and is proving himself a very capable leader and coach.

LET'S GO COACH SEARS, WE'RE WITH YOU



✿
RUSSELL 'DENNY'
SCHILL

Baldwin-Wallace Football
Captain

✿

LEVI STUMP

Barber

37 NORTH STATE STREET



A. W. COLLINS
Baldwin-Wallace Coach



GEO. W. WANNER
Baldwin-Wallace Graduate Manager and assistant coach.

WILLIAMS

Good Things to Eat

STEAKS - CHOPS - OYSTERS
LUNCHEONS - DINNERS

A GOOD PLACE TO MEET YOUR FRIENDS

C. D. MANN

Watchmaker & Jeweler

Dealer In

WATCHES, CLOCKS, JEWELRY AND SILVERWARE

WESTERVILLE, O.

WHY WORRY WHEN
YOUR MOTOR
STALLS

CALL 565-W

SCHOTT'S GARAGE

29-31 So. STATE STREET

ACCESSORIES AND MICHELIN TIRES

BALDWIN-WALLACE FOOTBALL SQUAD



HERE'S HOWDY

"A HEARTY WELCOME TO ALL
OUR OLD FRIENDS, THIS HOME-
COMING AND MANY MORE."

COME IN AND SEE US



The "UP to DATE" PHARMACY

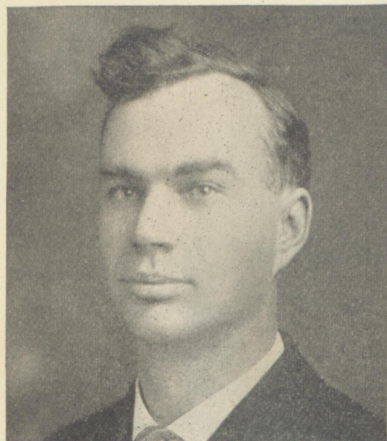
K. F. Ritter, Prop.

DRUGS, MEDICINES, SUNDRIES, ETC.

SAME OLD STAND

44 N. STATE ST.

DIRECTOR OF PHYSICAL
EDUCATION



R. F. MARTIN

Prof. Martin is well known to all Otterbein students and alumni, especially in the capacity of Director of Physical Education. He arranges for all athletic contests.



JOHN TOMPKINS

Coach Tompkins, a graduate of Wittenberg and all-Ohio tackle, is freshman coach and assists on the varsity staff.

TAN AND CARDINAL
GRID LEADER



JOHN L. CRAWFORD

This is "Jew's" third year of varsity football for his Alma Mater, and he is proving himself to be a capable leader on the football field. Wherever the battle is thickest there you will find "Jew".

Capital
\$30,000.00

Deposits
\$550,000.00

Surplus and Undivided Profits
\$30,000.00

THE OLD RELIABLE

Bank of Westerville

WE ARE GLAD TO SEE YOU AGAIN

We are Paying 4% on Time Certificates for 3, 6 or 9 Months.

GIVE US A CALL

1927 Otterbein College Football Squad

Name	No.	Weight	Position	Home
John Crawford	1	156	Center	Westerville
Ralph Fowler	2	175	R. Guard	Union City, Ind.
Kenneth Bunce	13	151	R. Guard	Westerville
Edwin Gearhart	3	179	L. Guard	Bucyrus
Paul Hance	8	160	L. Tackle	Westerville
Frances Saul	18	155	L. End	Camp Hill, Pa.
Myron Reck	7	167	R. Tackle	Middletown
Howard Minnich	15	155	Quarter	Greenville
Lloyd Schear	14	148	End	New Philadelphia
Otho Schott	16	135	Halfback	Westerville
Hubert Pinny	17	165	End	Westerville
Raymond Hadfield	12	171	Full	Bedford
Paul Clingman	19	151	Halfback	Chillicothe
Paul Fletcher		134	Halfback	Westerville
Louie Norris	9	167	L. Tackle	Westerville
Donald McGill	6	165	Center	Moundsville, W. Va.
Lawrence Hicks	35	160	L. Tackle	Fredericktown
David Lee	5	135	Quarter	Dayton
Ernest Riegel	25	194	End	Westerville
Donald Shoemaker	36	196	L. Guard	Dayton
Robert Hawes	31	153	Tackle	Greenville
Robert Knight	83	127	End	Parkersburg, W. V.
Phillip Charles	37	165	R. Guard	Westerville
Forest Benford	20	177	Tackle	Tyrone, Pa.
Jesse Miller	4	128	Halfback	Westerville

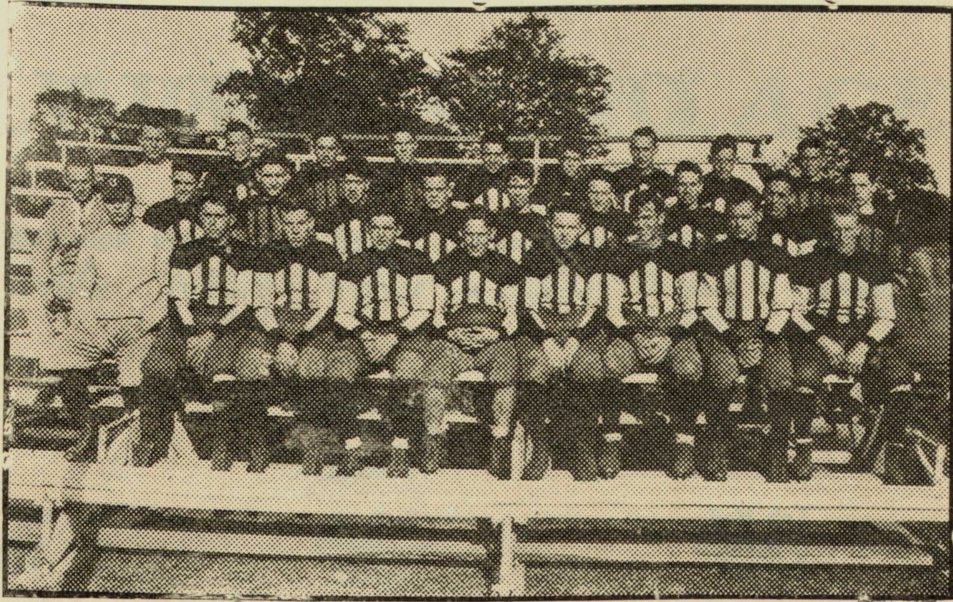
Paul Harrison

160-Halfback

WIN!
OTTERBEIN
WIN!

GLEN - LEE
Coal, Floral & Gift Shop

THE TAN and CARDINAL SQUAD



*WOLF'S
MEAT MARKET*



Fancy Cut Meats

PROBABLE LINE-UP

OTTERBEIN

Left End	Left Tackle	Left Guard	Center	Right Guard	Right Tackle	Right End
Pinney 17	Benford 20	Gearhart 3	Crawford 1	Fowler 2	Reck 7	Riegel 25
Saul 18	Hance 8	Shoemaker 36	McGill 6	Bunce 13	Hawes 31	Schear 14
Knight 83	Norris 9			Charles 37		
	Hicks					

Quarterback
Minnich 15

Muller

Left Half
~~Minnich~~
Schott 16

Hankinson

Fullback
Hadfield 12
Lee 5

Right Half
Clingman
Fletcher

Minnich

	FIRST QUARTER	SECOND QUARTER	THIRD QUARTER	FOURTH QUARTER	TOTAL
Otterbein					
Baldwin- Wallace					

PS FOR THE GAME

BALDWIN-WALLACE

Left End	Left Tackle	Left Guard	Center	Right Guard	Right Tackle	Right End
Bennett 50	Fox 51	Merkle 43	Shultz 41	Beyer 6	Hagenmeyer 38	Buck 31

Quarterback
Schill 35

Left Half
Hallett 7

Fullback
Smith 44

Right Half
Wells 36

OFFICIALS

Referee: MR. A. B. LONG (Purdue)

Umpire: Mr. L. R. WELLS (Ohio State)

Headlinesman: MR. E. C. RUPP (Denison)

*Everything At
The Right Price*



GEORGE FARNLACHER
Jeweler
4 East Main Street

B. W. WELLS
The TAILOR
GLOBE CLOTHES
DRY CLEANING and PRESSING
Quality and Workmanship

1927 Baldwin - Wallace

Football Squad

Name	No.	Weight	Position	Home
Joe Avellone	5	142	Halfback	Cleveland
Charles Barnum	32	157	Halfback	Olmstead Falls
Merlin Bement	10	156	Tackle	Litchfield
Clyde Bennett	50	167	End	Valley City
Art Beyer	6	162	Guard	Berea
Earl Buck	31	150	End	Berea
Shannon Foltz	27	170	Tackle	Galion
Ellsworth Fox	51	178	Center	Berea
W. Hagenmeyer	38	175	Tackle	Elyria
Harold Hallett	7	170	Halfback	Cleveland
Millard Henry	18	139	Halfback	Ashtabula
Julius Klein	23	165	Halfback	Cleveland
Ernest Knautz	47	155	Guard	Indiana
Kenneth Lower	37	160	End	Olmstead Falls
Arthur Maly	2	170	Halfback	Cleveland
Oren Merkle	43	170	Tackle	Cleveland
Clifford Mochel	22	125	End	Galion
Albert Narosny	15	154	Tackle	Cleveland
Roland Osburn	12	156	Guard	Burton
William Pfiller	25	160	Tackle	Celina
Edward Riemenschneider	15	150	Guard	Cleveland
Russell Schill	35	146	Guard	Akron
Roland Schultz	41	165	Center	Cleveland
Walter Schwegler	14	146	Halfback	Cleveland
William Smith	44	160	Fullback	Lorain
Jay Stillinger	22	143	Quarter	Berea
Robert Steck	4	150	End	Berea
William Wingate	30	135	Center	Lakewood
Harry Wells	36	147	Halfback	Lakewood
Frederick Wolfe	45	160	Tackle	Cleveland



OTHER GAMES TODAY

OHIO CONFERENCE

MUSKINGUM	at	AKRON
OBERLIN	at	MIAMI
MARIETTA	at	CINCINNATI
WITTENBERG	at	OHIO UNIVERSITY
HEIDELBERG	at	OHIO NORTHERN
WESLEYAN	at	DENISON
HIRAM	at	CAPITAL
CASE	at	WOOSTER
KENYON	at	WESTERN RESERVE

BIG TEN CONFERENCE

OHIO STATE	at	MICHIGAN
ILLINOIS	at	NORTHWESTERN
IOWA	at	MINNESOTA
PURDUE	at	WISCONSIN

THE COLLEGE SHOP

"J. C." "SATAN", '23 "BONES", '16

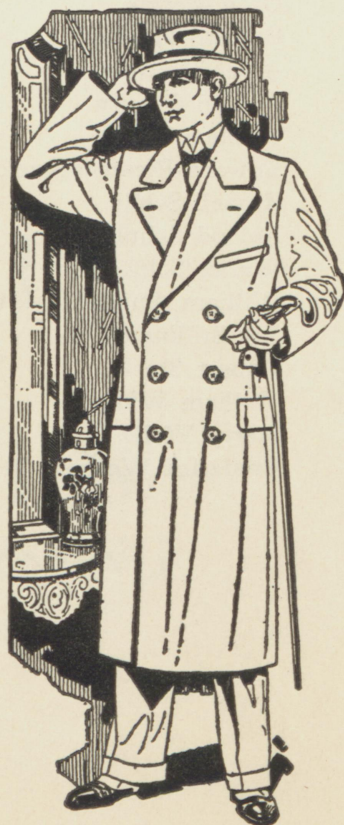
Hello, Old Grads! Come in and shake a hand.
This is the Up-town Alumni Headquarters—
a good place to "loaf" between events.

Shoes, Haberdashery, Clothing
STYLISH CLOTHES AT MODERATE
PRICES

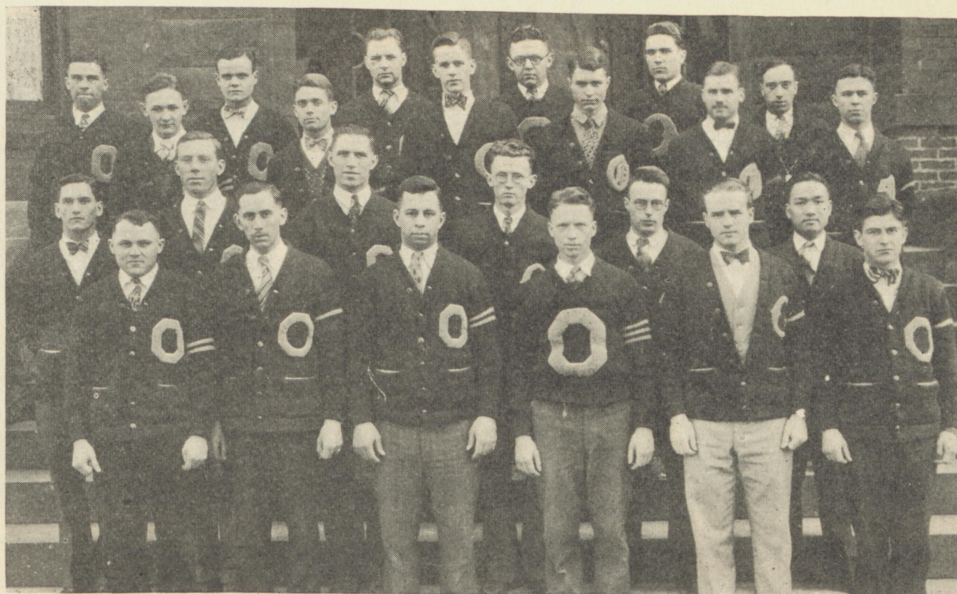
Be sure to step in before leaving town. We
like to see the "old-timers".

22 NORTH STATE STREET
J. C. FREEMAN & CO.

Westerville



OTTERBEIN'S VARSITY "O"



VARSAITY PRESS SHOP

Cleaning and Pressing

The Best in Price and Service

12 1-2 W. COLLEGE AVE.

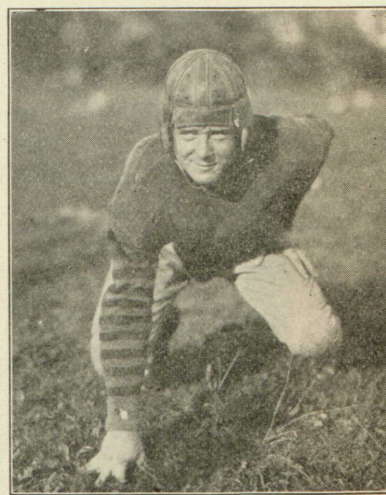
PHONE 24 W

BALDWIN-WALLACE VETERANS



WILLIAM "PETE" SMITH
Fullback
TWO YEAR LETTERMAN

ELLSWORTH FOX
Center
TWO YEAR LETTERMAN



CLYDE BENNETT
End
TWO YEAR LETTERMAN

Life is largely what we make it, we can whistle or whine, smile or snarl, sing or sob, sleep or snore alone.

We are trying to run a Dry Goods Store in Westerville in a way that will make you want to come in and see us whether you are in the mood or not.

We carry, what we believe to be, an up-to-date line of Hosiery, Umbrellas, Raincoats, Silk, Wool and Cotton Piece Goods and various items that are generally found in a store of this kind. Come in and be convinced.

H U H N

STOP!

Order Your

S I B Y L

NOW

Harold Young
Circulation Manager

FRESHMAN FOOTBALL SQUAD



. . . OTTERBEIN SONGS . . .

OTTERBEIN LOVE SONG

In a quiet peaceful village, there's one we love so true,
She ever gives a welcome to her friends both old and new.
She stands serene 'mid tree tops green,
She's our dear Otterbein.

CHORUS

Old Otterbein our college, we sing of thee today;
Our memories 'round thee linger, in a sweet and mystic way.
O Otterbein, we love thee, our hearts are only thine,
We pledge anew we will be true, dear Otterbein.

Her halls have their own message of truth and hope and love;
She guides her youths and maidens to the life that looks above,
Her stately tower speaks naught but power
For our dear Otterbein.

BATTLE SONG

We're here to win for dear old Otterbein,
We'll never let her colors trail,
We'll play the game to win for Otterbein,
Hang up the score, we cannot fail.

CHORUS

Fight! Fight! Fight to win! ,
Fight! Fight! Fight to win! ,
Fight! Fight!
Fight to win the game for Otterbein.
Come lads, remember now we've got to win,
Our colors shall not touch the ground,
For Alma Mater we will do or die,
In vict'ry let our cheers resound.

MARCHING SONG

Oh, we're proud of our Alma Mater,
Of the school that we love so well;
We've flunked in our classes, frolicked with
lasses,
Tied up the old college bell!
Oh, the boys are the swellest fellows,
And the girls they are mighty fine;
Come, let us be singing, laurels be bringing,
To crown our loved Otterbein.

Yea! Otterbein, Beat Baldwin-Wallace

Dry Goods Notions Hosiery
Underwear Novelties

BUTTERICK and FASHIONABLE
DRESS Patterns

ULRY & SPOHN

15 N. State Street

. . . OTTERBEIN YELLS . . .

OTTERBEIN YELL

Yea Otterbein,
Yea Otterbein,
O-T-T-E-R-B-E-I-N,
Otterbein! Yea

LOCOMOTIVE NO. 1 (Slowly increase in speed)

O-T-T-E-R-B-E-I-N,
O-T-T-E-R-B-E-I-N,
O-T-T-E-R-B-E-I-N,
Otterbein, Yea.

SKYROCKET

Prolong whistle—Boom
Ah!
Otterbein.

LOCOMOTIVE NO. 2

Rah, Rah, Rah, Rah,
Otterbein
Rah, Rah, Rah, Rah,
Otterbein
Rah, Rah, Rah, Rah,
Otterbein
Yea!

MEN'S INTER-WOVEN FANCY HOSIERY



48c, 75c, \$1,
\$1.50, \$2.50

Fancy Lisle, Silk
and Silk and
Wool

LADIES PHOENIX SILK HOSE

\$1

\$1.50

\$1.85



E. J. NORRIS & SON

WELCOME OTTERBEIN FRIENDS!

We invite you to visit our up-to-date bakery. We handle a full line of quality Sweet Rolls, Bread, Pies, Cookies and Cakes.

Your order for Moore's & Ross Ice Cream, Special Individual Moulds for all occasions, will be given our prompt attention.

WESTERVILLE BAKERY

Oliver R. Roberts, Mgr.

PHONE 45

7 N. STATE STREET

3-C TIRE SHOP

GOODYEAR
Service Station

* * *

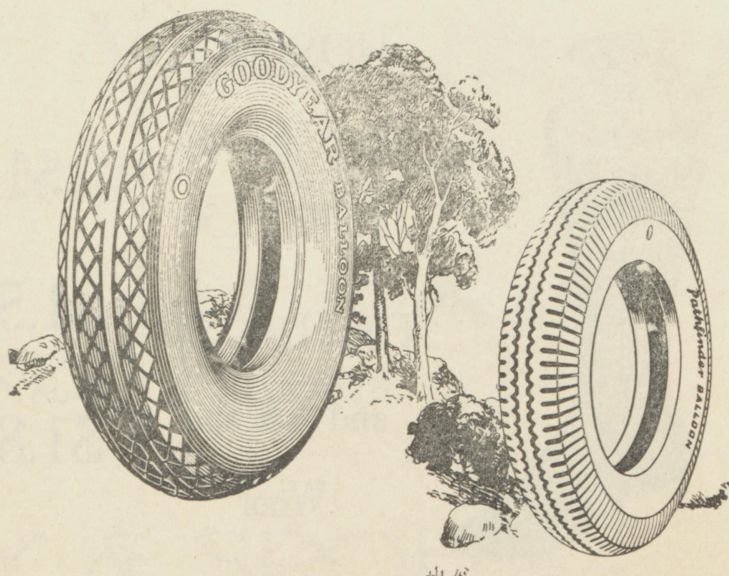
GASOLINE and
OIL

* * *

TIRE REPAIR &
VULCANIZING

Telephone 458-W

9 S. State Street



Principle Changes In The 1927 Football Rules

Goal Posts—Goal posts moved from the goal line ten yards back, to the rear of end zone. Actual playing field remains 100 yards. Touchdown (as formerly) made by crossing the goal line.

Forty Plays—By mutual agreement games may be forty plays per period instead of fifteen minutes each period.

Time Out—"Time Out" reduced from four to three in each half of the game.

Thirty Seconds—A time limit of thirty seconds to put the ball in play, after it is in a position to play.

Fifteen Seconds—A time limit of fifteen seconds placed on the so-called "huddle" before the ball is put into play.

Substitutes—During the last two minutes of each half, time shall not be taken out for substitutes made by the team in possession of the ball.

Shift—On shift plays, all players must come to a complete stop and remain motionless for one second.

Exception—One player in motion toward his own goal line.

Penalty—Has been increased from five to fifteen yards.

Fumbled Punt—A fumbled punt, as formerly is a lost ball, it may be recovered by a player of the team that kicked the ball, but may not be advanced beyond the point where it is recovered.

Exception—on free kicks.

Lateral Backward Pass—A lateral pass is permitted by any offensive player at any point on the field, all incompleated passes are dead and the ball is kept by the offensive team where it is grounded.

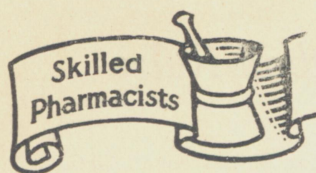
Exceptions—A pass from center which touches the ground on the field of play.

The Rexall Store

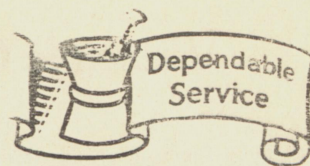
*Is Your Drug Store
and More*

TRY US FOR YOUR WANTS

HOFFMAN and BRINKMAN



Try The Drug Store First



WELCOME

OTTERBEIN STUDENTS

and

HOME COMERS

New Location After November 1st,
12 North State St.
In State Theatre Building

LOCATION TODAY
WESTERVILLE PHARMACY
C. H. DEW, Prop.
"WHERE SERVICE IS BEST"

12 E. Main St.

Westerville, O.

STATE THEATRE

Opening Thursday Oct. 27,

WITH

WALLACE BEERY AND **RAYMOND HATTON**

IN
**"NOW
WERE IN AIR"**
WITH LOUISE BROOKS



PRESENTED BY
ADOLPH ZUKOR
JESSE L. LASKY



Friday Night, October, 28— Clara Bow, the "It Girl" in "HULA" Saturday Night, October 29— Richard Dix In "SHANGHAI BOUND"

Coming Soon— "BEN HUR" — "THE BIG PARADE" — "CAMILLE"



Robert Knight, Editor

A. O. Barnes, Bus. Mgr.

The Buckeye Press

