

HOMECOMING

Programme

HEIDELBERG
vs.
OTTERBEIN

SATURDAY, NOVEMBER 10, '28

OTTERBEIN ATHLETIC FIELD

Two-Thirty P. M.

PRICE **25c**

Program of the Day

- 10:30 A. M.—Pep Rally Chapel
(WITH FREDDIE MILLER AND HIS BAND)
- 1:00 P. M.—Parade Through Downtown Section
- 1:30 P. M.—Ground-Breaking for New Gym
In charge of Homer Lambert and Frank Clements
- 2:30 P. M.—O. C. vs. Heidelberg Athletic Field
(LET'S ALL BEAT THE TRI-COLOR CREW)
- 6:30 P. M.—Alumni-Student-Faculty Banquet
U. B. Church
(BRING LOTS OF PEP WITH YOU)
- 8:30 P. M.—Fraternity and Sorority Reunions
Frat Houses and Sorority Rooms
-

SUNDAY

- 9:30 A. M.—Sunday School U. B. Church
- 10:45 A. M.—Church Services U. B. Church



W E L C O M E

Westerville, Ohio,
November 1st, 1928.

Dear Alumnus:

Otterbein College always welcomes to the campus graduates, former students, parents and friends of present students. In no year has this welcome been extended so warmly as now. The Homecoming ought to be significant because of the good fellowship it inspires and especially now because of the growing interest in our present gymnasium appeal.

At this writing, November 1st, we have passed the hundred thousand dollar mark. We hope to be able to reach the goal of one hundred fifty thousand dollars before Homecoming time. We trust that this may be an occasion of genuine celebration and rejoicing.

We welcome our friends to our social fellowship, to the Otterbein-Heidelberg game, to the various other functions of the day, and if you remain over the Sabbath, to the public services in the church. We extend to you now the greetings of the Students, Faculty, and Trustees. We look forward with pleasure to your coming.

Cordially yours,
W. G. CLIPPINGER,
President.

Y E A T E A M!

RAH! RAH! RAH!
KICK A GOAL,
USE GOOD JUDGEMENT:
BUY SECURITY'S COAL.

F. E. Sanders, '16

I. G. Windom, Ex. '21

C. M. Patrick, '25

The Security Coal and Oil Co.

QUALITY COAL — SERVICE

WELCOME ALUMNI

ASK YOUR COLLEGE FRIENDS

ABOUT--

The Coffee Shoppe

"One Friend Tells Another"

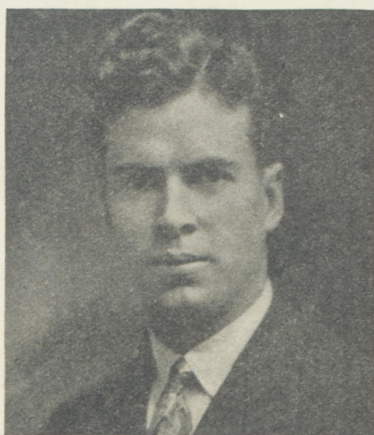


How to Beat Heidelberg

In addition to the twenty-five men in uniforms, Coaches Sears and Tompkins, and Captain Lee, are depending upon some four hundred students and some fifteen hundred alumni to beat the crew from Tiffin.

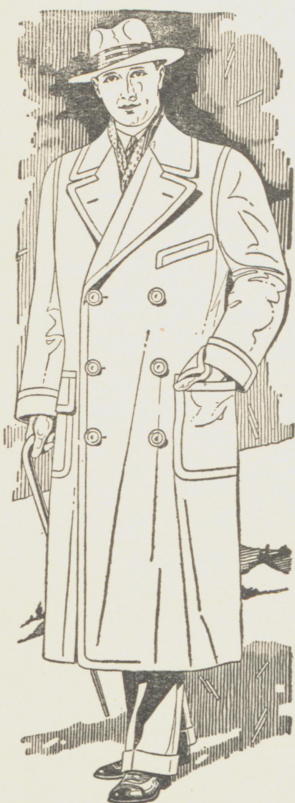
The players must and will fight to the last, and that is their part. But we know they will do their best. Will you cheer and yell encouragement if Heidelberg takes the ball to Otterbein's ten-yard line? Will you yell if Dave Burke fails in a plunge through guard? Will you lose your courage when a penalty sets the Tan back fifteen yards? Or will you cheer only when we get the breaks or make the gains?

The Tan warriors do not need the encouragement when they are ahead! They need it when they are trailing! We can beat Heidelberg! They have been beaten, and they will be beaten today, IF YOU BELIEVE IT, AND HELP THE MEN IN UNIFORMS!



COACH A. B. SEARS

Coach "Al" Sears came to Otterbein last year, and as first years go,—when a new system is being inaugurated—the season was average. This year, however, although there have been several close defeats for the Sears-men, the team is one of which Sears and any Otterbeinite can be proud. The coach made a name for himself at Wooster, where he starred in three sports, and this reputation continued as he coached Bellaire High School. Today's game should be the season's climax, and a victory is expected.



THE COLLEGE SHOP

"J. C."

"HAROLD"

Hello Old Grads! Come in and shake a hand. This is the uptown Alumni Headquarters. A good place to loaf. Between events maybe you will want a clean Shirt or a new Tie; we will be glad to see you anyway.

SHOES

HABERDASHERY
CLOTHING

The Best for the Least Money.
Be sure to come in before leaving the old town.

J. C. Freeman & Son

22 NORTH STATE ST.

WE ARE GLAD TO SEE YOU AT THE HOMECOMING

We are still the same strong, conservative, obliging Institution, still serving the Community as we served in your days at OTTERBEIN.

We trust you have prospered as we have.

GREETINGS AND BEST WISHES

from THE BANK of WESTERVILLE COMPANY



COACH SAYGER

The following is a communication from The Killikilik, Heidelberg's school paper:

"Coach Sayger is a graduate of Heidelberg, class of 1921. He first coached at Barberton High School, later at Akron University, and came to Heidelberg in 1925. If we may count success in games won and lost Coach Sayger has won better than fifty percent of his contests. As for Coach Edler—He coached at Otterbein, previous to coming to Heidelberg in 1927 and I believe his record at Otterbein will speak for itself. As to our captain, we do not have a regular captain, but a member of the team is appointed before the game, to direct the activities on the gridiron. Our captain is elected after the regular season is over."

Such a reputation for Coach Sayger and "our own" "Deke" Edler, will mean a lot this afternoon as the Tanmen stack up against the Tri-Color outfit from Tiffin.

Greetings From Alumni Secretary

TO THE OLD GRADS

Today is **our day** on the campus. For the time being we have put ourselves back one, five, ten, twenty, fifty years and **once more** the campus is **ours**. We may not care to take the old walk to the cemetery or wander along the banks of Alum Creek, for to some of us those days are gone forever, but we do want to feel that this is our College Home; that this is a real **Homecoming**. The campus is **ours**. The team is **ours**. The day is **ours**. Let out that old yell again. The voice **may** be a bit cracked. The muscles of the throat atrophied from disuse, but what of it?

The undergraduates would be pleased to see us once again doing the old stunts and singing the old songs.

Forget your dignity and ponderosity. Paraphrasing Holmes—"If there's any old fellow got mixed with boys, put him out, even if making plenty of noise. Hang the Almanac's cheat, is what the calendars say! Old time is a liar—**We're twenty today!**"

WHY WORRY WHEN YOUR MOTOR STALLS

CALL 565-W

SCHOTT'S GARAGE
29-31 So. STATE STREET

ACCESSORIES AND CORDUROY TIRES

THE A. NASH TAILORING CO.

SUITS	\$23.50
-------	---	---	---	---	---------

OVERCOATS	\$23.00
-----------	---	---	---	---	---------

B. W. WELLS
TAILOR and AGENT

WE ALWAYS PLEASE

TRY US

OTTERBEIN'S CAPTAIN



"Dutch" Lee is playing his second year as quarterback for the Tan, and doing great work on the gridiron. His generalship is always of high type, and he is one man who is always calm, in the pinches.

"Dutch's" size is against him, when he lines up against Ohio Conference teams, but his ever-present grit and brains carry him through in fine shape. He ran wild in the Kenyon game, and also at Baldwin-Wallace, and everyone will watch him closely this afternoon, for a repetition of his good work. Hail the little fellow!

C. D. MANN

Watchmaker & Jeweler

Dealer in

WATCHES, CLOCKS, JEWELRY AND SILVERWARE

WESTERVILLE, OHIO

LEVI STUMP

Barber

37 NORTH STATE STREET

WELCOME HEIDELBERG

OTTERBEIN throws open its doors to its guests from Heidelberg, in its desires to have them cooperate in its annual Homecoming program. Our buildings, grounds, fraternities, sororities—all are for your inspection. We want you to be pleased with Otterbein, and to know it as a progressive college. Make yourselves at home, and come back again!

PROBABLE LINE-UP

OTTERBEIN

Left End
Schear
Sanders
Shankleton

Left Tackle
Bunce
Benford

Left Guard
Hadfield
Robertson
Adams

Center
Hughes

Right Guard
Nutt
Wiley

Right Tackle
Hance
Christian

Right End
Clippinger
Young

Left Half
Hankinson
Seitz

Quarterback
Lee
Fletcher

Right Half
Saul
Widdoes

Full Back
Burke
Dixon

	FIRST QUARTER	SECOND QUARTER	THIRD QUARTER	FOURTH QUARTER	TOTAL
Heidelberg College					
Otterbein College					

PS FOR THE GAME

HEIDELBERG

Left End
Strauch

Left Tackle
Hutson

Left Guard
Brand

Center
Kingsmore

Right Guard
Winters

Right Tackle
Hutchinson

Right End
Hess

Left Half
Adams

Quarterback
Fingerhuth

Right Half
Whitted

Full Back
Welter

OFFICIALS

Referee: TOWN (Bates)

Umpire: EVANS (Ohio Wesleyan)

Head Linesman: TRAUTMAN (Ohio State)

Time of Quarters—15 Minutes.

3 - C TIRE SHOP

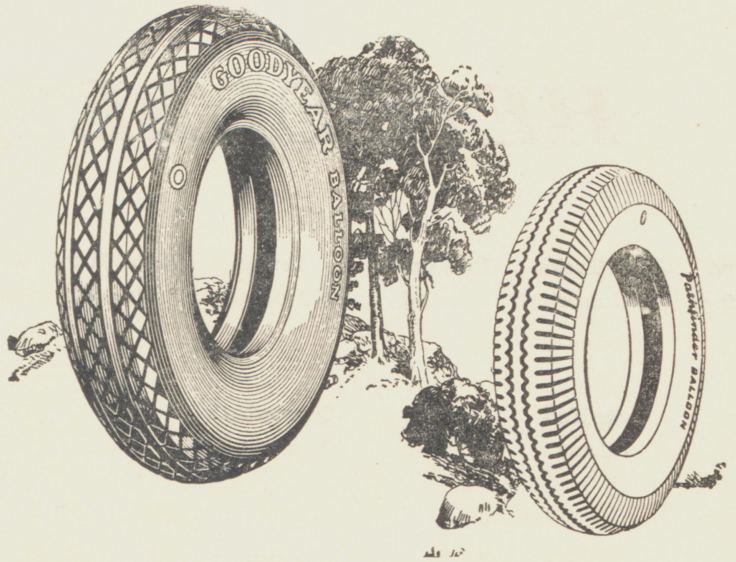
GOODYEAR
Service Station

—
GASOLINE and
OIL
—

TIRE REPAIR &
VULCANIZING

Telephone 458-W

9 S. State Street



BEAT HEIDELBERG

Heidelberg's Squad

Name	No.	Weight	Position	High School
Adams, Earl	29	159	L. H.	Akron Central
Bode, Herman	17	162	T.	Youngstown South
Brand, Robert	11	160	L. G.	Haskins High
Gulmi, Andrew	20	152	E.	West Tech
Hess, Richard	26	190	R. E.	Akron South
Haley, Dwight	30	181	L. H.	Tiffin High
Hawkins, Leroy	19	170	G.	East Tech
Hutchinson, John	20	187	R. T.	Wadsworth High
Hutson, Merle	24	195	L. T.	Bradner High
Keyerleber, Frederick	56	187	G.	Euclid High
Kingsmore, Donald	50	154	C.	Tiffin High
Leffler, Harold	18	151	E.	Akron South
McElheny, Howard	51	165	G.	Tiffin High
Mautz, Forest	25	149	R. H.	Somerset High
Schereck, Paul	3	155	C.	Tiffin High
Strauch, Jacob	6	153	L. E.	Crestline High
Scaife, Henry	14	160	Q. B.	Junior Home High
Settlage, Arnold	55	171	T.	Tiffin High
Welter, Albert	13	162	F. B.	Tiffin High
Winters, Clement	4	158	R. G.	Jefferson High
Whitted, David	27	155	E.	Culver High
Vokaty, Otto	23	184	F. B.	West Tech
Fingerhuth, James	5	152	Q. B.	Tiffin High
Keller, John	60	150	L. G.	Tiffin High

Otterbein's 1928 Squad

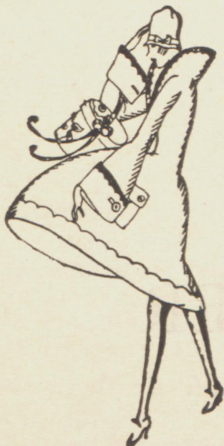
Name	Weight	Position	High School
Lee, David	135	Q. B.	Roosevelt (Dayton)
Clippinger, W. G.	145	L. E.	Westerville
Hughes, Paul	150	C.	Greenville
Schear, Lloyd	145	R. E.	New Philadelphia
Dixon, Alva	138	L. H.	Westerville
Hance, Paul	161	L. T.	Westerville
Nutt, Clare	220	R. G.	Westerville
Burke, David	175	F. B.	Westerville
Bunce, Kenneth	153	L. G.	Westerville
Robertson, V. M.	173	R. T.	East St. Louis (Ill.)
Saul, Francis	162	R. H.	Camp Hill
Hankinson, Harvey	153	L. H.	Logan
Shankleton, Clarence	152	E.	Maple Heights (Cleveland)
Hadfield, Ray	187	F. B.	Bedford (Cleveland)
Fletcher, Paul	135	H. B.	Westerville
Benford, Forrest	177	T.	Tyrone (Pa.)
Hawes, Robert	150	G.	Greenville
Wiley, Donovan	158	G.	Westerville
Young, Harold	145	R. E.	McKinley (Canton)
Seitz, Emerson	140	H. B.	Columbus Grove
Widdoes, Emmor	135	H. B.	Westerville
Holdren, Osborn	142	E.	Westerville
Nesbit, William	145	G.	Latrobe (Pa.)
Adams, George	156	G.	Westerville

HOW THEY LOOK IN ADVANCE

Forecasts of games are usually subject to much error; therefore the editor takes courage and gives the dope. Muskingum tied Heidelberg, 6-6, while they beat Otterbein 13-0. Otterbein has lost to Findlay, Muskingum, Marietta, and Hiram, while Heidelberg has lost fewer games. Heidelberg beat B. W. 38-0; while O. C. defeated Baldwin-Wallace 32-0. Heidelberg beat O. C. last year, and has practically the same lineup, very few men having been lost by graduation. Otterbein lost six men by graduation and withdrawal. However, O. C.'s fighting spirit, which always carries them through in Homecoming games, is their biggest claim for victory, and Heidelberg's good season may be spoiled.

"COLLEGIATE TOGGERY"

CAPS, HATS, SHIRTS, SOCKS,
ATHLETIC EQUIPMENT



LADIES' PHOENIX
HOSIERY
\$1.00, \$1.50, \$1.75

OXFORDS FOR
SCHOOL
\$3.95, \$4.85, \$5.85

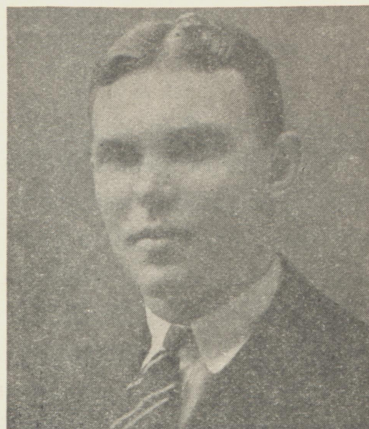


BOSTONIAN
OXFORDS
\$6.85, \$7.85, \$8.85

E. J. NORRIS & SON



R. F. MARTIN
Director of Athletics



A. N. TOMPKINS
Assistant Coach

*Everything At
The Right Price*



GEORGE FARNLACHER
Jeweler

4 East Main Street

COMMON



PENALTIES

LOSS OF FIVE YARDS

Violation of the offside rule, which includes:

(a) Lineman or backs illegally in motion when the ball is snapped.

(b) Any player of the kicking side ahead of the ball when it is kicked at the kickoff.

(c) Interference with opponents before the ball is snapped.

2. Unreasonable delay by a team.

3. Running into the kicker after he has kicked the ball.

4. Failure of substitute to report to referee when entering the game.

5. Unfair play not specially covered in the rules.

6. Time called more than three times during a half at the request of the captain of the team.

7. Defensive player holding an offensive player.

8. For each incomplete forward pass during the same series of four downs over the first one. (Only one permitted without penalty.)

9. Crawling by the man in possession of the ball.

LOSS OF 15 YARDS

1. Substitute communicating with players before the ball is put in play.

2. Interference with a man who has signaled for a fair catch.

3. Throwing player to the ground after he has made a fair catch.

4. Offensive player pushing or pulling the man carrying the ball.

5. Offensive player holding a defensive player.

6. Players of the side making a forward pass interfering with defensive players after the ball is passed.

7. Deliberately roughing the kicker after he has kicked the ball.

8. Piling up on players who are down.

9. Tackling a man after he has run out of bounds:

10. Offensive player tripping an opponent.

11. Sideline coaching.

12. Intentional throwing of forward pass to the ground.

13. For hurdling.

14. Failure to come to stop in "shift" play.

LOSS OF 25 YARDS

1. Clipping.

2. Delay start of first or third periods.

LOSS OF HALF DISTANCE TO GOAL LINE

1. Return of player to the game who has previously been in that half.

2. Disqualification of a player for rough play.

3. Any foul occurring inside the opponents' one-yard line or behind goal line.

LOSS OF A DOWN

1. Illegal or incomplete forward pass.

2. Forward pass striking the ground.

3. Forward pass touched by two eligible players of the passing side.

4. Forward pass going out of bounds on the fly.

5. Recovery of blocked kick by kicking side, regardless of which side blocked it.

6. Interference by side making forward pass prior to fourth down.

LOSS OF BALL

1. Ball kicked out of bounds unless touched in the field of play.

2. Illegal use of hands or arms to prevent an opponent from securing loose ball.

3. Forward pass touched by ineligible player of the passers side.

4. Interference by defensive side under a forward pass.

5. Failure to advance the ball 10 yards in four downs.

6. Kicking or kicking at a loose ball.

7. Player on the kicking side who is ahead of the ball when it is kicked and touches the ball before it touches an opponent.

FORFEITURE OF GAME

Refusal to abide by referee's decision or to play within two minutes after being ordered to do so by the referee.

IMPORTANT NOTE REGARDING TIME OUT

Time is automatically taken out during a try for point after a touch down, after a safety or a touch-back, after fair catch has been made, after an incomplete forward pass, during enforcement of all penalties, when the ball goes out of bounds, or when for any reason play is suspended by the referee. Time shall not begin again, after any of the aforesaid, until the ball is actually passed back from center.

SOME TAN WARRIERS



SCHEAR



HANCE



BUNCE



HANKINSON



SAUL



BENFORD



HADFIELD

OTTERBEIN LOVE SONG

In a quiet peaceful village, there's one we love so true,
She ever gives a welcome to her friends both old and new.
She stands serene 'mid tree tops green,
She's our dear Otterbein.

(Chorus)

Old Otterbein our college, we sing of thee today;
Our memories round thee linger, in a sweet and mystic way.
O Otterbein, we love thee, Our hearts are only thine,
We pledge anew we will be true, dear Otterbein.

Her halls have their own message of truth and hope and love;
She guides her youths and maidens to the life that looks above.
Her stately tower speaks naught but power
For our dear Otterbein.

BATTLE SONG

We're here to win for dear old Otterbein,
We'll never let her colors trail,
We'll play the game to win for Otterbein,
Hang up the score, we cannot fail.

Fight!—Fight! Fight to win!
Fight!—Fight! Fight to win!
Fight!—Fight!—
Fight to win the game for Otterbein.

Come lads remember now we've got to win,
Our colors shall not touch the ground,
For Alma Mater we will do or die,
In vict'ry let our cheers resound.

MARCHING SONG

Oh, we're proud of our Alma Mater,
Of the school that we love so well;
We've flunked in our classes, frolicked with
lasses,
Tied up the old college bell!
Oh, the boys are the swellest fellows,
And the girls they are mighty fine;
Come let us be singing, laurels be bringing,
To crown our loved Otterbein.

SKYROCKET

Prolonged whistle—Boom
Ah-h-h-h-h
Otterbein.

LOCOMOTIVE NO. 1

(Slowly increase in speed)
O-T-T-E-R-B-E-I-N,
O-T-T-E-R-B-E-I-N,
O-T-T-E-R-B-E-I-N,
Otterbein, Yea.

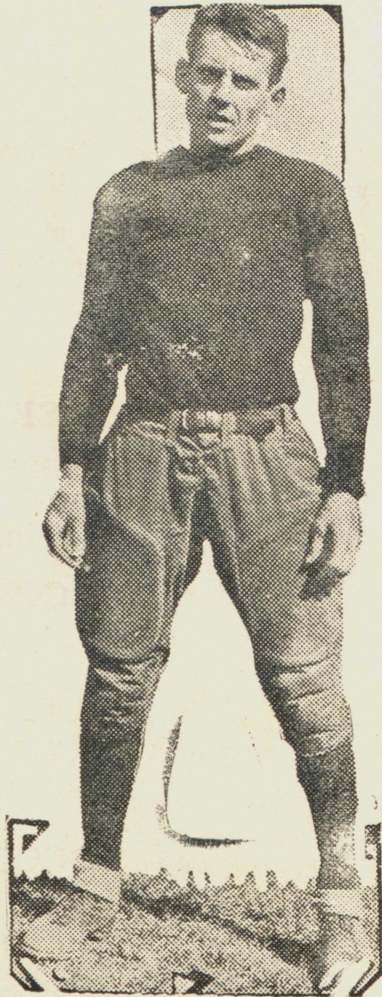
LOCOMOTIVE NO. 2

Rah, Rah, Rah, Rah
Otterbein
Rah, Rah, Rah, Rah
Otterbein
Rah, Rah, Rah, Rah
Otterbein

YEA OTTERBEIN

Yea Otterbein,
Yea Otterbein,
O-T-T-E-R-B-E-I-N,
Otterbein, Yea!

SOME TRI-COLOR STARS



SCAIFE, Q. B.
VOKATY, F. B. (top)

BUS MAUTZ, H. B.

COACH SAYGER
HUTSON, Tackle (top)

Vokaty will bear the blunt of the attack this afternoon against the Otterben Tan. He has done the plunging for Sayger this season, and remarkably consistent he is. Scaife is a fast halfback who will also bear watching. Hutson is the big 195 pound tackle who is a bear on defense, and who will furnish most of the opposition on the line, together with Kinhas been equal to the best Ohio Conference halfbacks. gsmore, at center. Mautz is a veteran, whose recordHis ground gaining has featured all of Heidelberg's games this season. And Coach Sayger is the man at the helm, who has led his men to successful glory all season.

A H E A R T Y
W E L C O M E
T O T H E V I S I T O R S ,
A L U M N I A N D
F R I E N D S

from the

U N I V E R S I T Y
B O O K S T O R E

WHY THE TAN ARE WEAR- ING GREEN

Due to the fact that Heidelberg's gridders this year are arrayed in red uniforms quite similar to the Otterbein men, it has been found necessary to avoid any inconveniences that may arise by substituting the Frosh green jerseys for their own Cardinal shirts. May the verdant green inspire the fighting Irish spirit in the sons of Otterbein!

The Rexall Store

One Cent Sale
Now Going On
HOFFMAN and BRINKMAN

Celebrate Homecoming at
THE STATE THEATRE

DURING HOMECOMING WE CORDIALLY INVITE YOU TO SEE THE FINEST MODERN
AND MOST BEAUTIFUL SMALL
THEATRE IN THE STATE

PROGRAM

SATURDAY NIGHT, NOV. 10

Zane Grey's Latest Story

"AVALANCHE"

A Wonderful Picture

SUNDAY, NOV. 11—One Day Only

"WIN THAT GIRL"

A Clean Cut Story of College Life

MONDAY, NOV. 12

First Showing in Central Ohio

Richard Dix and Ruth Elder in

"MORAN OF THE MARINES"

BUY YOUR TICKETS FROM THE AMERICAN LEGION—MONDAY NIGHT
IS THEIR NIGHT.



Editor, Kenneth F. Echard, '29
Business Managers, Robert Copeland, '32, Edwin Shafer, '31
The Buckeye Press