

VARSITY "O"
OFFICIAL
**HOME-COMING
PROGRAM**



OTTERBEIN
VS
ASHLAND

Saturday, October 22, 1938

ATHLETIC FIELD

2:30 P. M.

Price 10c

PROGRAM

Annual Fall Home-coming

SATURDAY, OCTOBER 22

- 10:00 A. M.—Presentation of the Queen, College Chapel.
1:30 P. M.—Parade to Athletic Field.
2:15 P. M.—Otterbein vs. Ashland.
5:30 P. M.—All-Campus Dinner, College Church.
8:30 P. M.—Theta Alpha Phi presents "Glass Houses", Alumni Gym.

SUNDAY, OCTOBER 23

- 10:00 A. M.—Special Services at College Church.

THETA ALPHA PHI
PRESENTS

"GLASS HOUSES"

A Three Act Comedy

SATURDAY, OCTOBER 22

8:15 P. M.

COLLEGE CHAPEL

All Seats Reserved

ADMISSION 35c

OCTOBER 22, 1938

Today is

"SWEETEST DAY"

One day of the year is designated as "Sweetest Day" the day to remember the "Sweetest Girl" with a box of our delicious Chocolates.

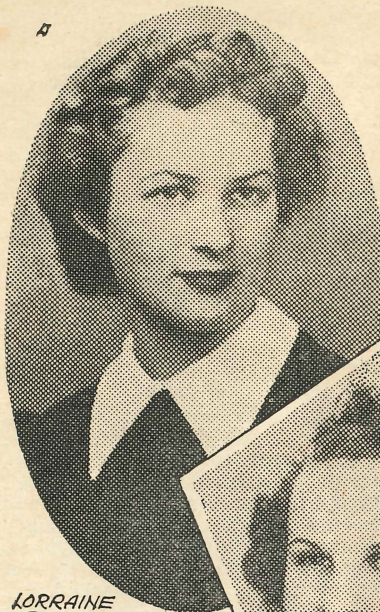
WHITMAN'S

GOBELIN'S

SCHRAFFT'S

WILLIAMS GRILL

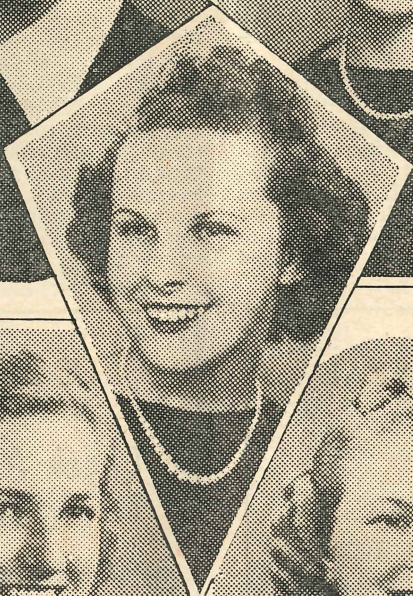
QUEEN AND HER COURT



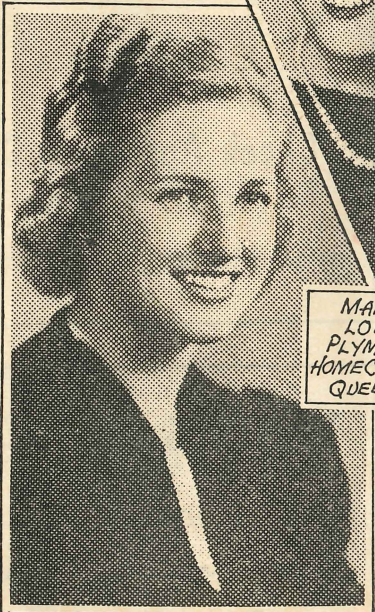
LORRAINE
RATLIFFE



KATHLEEN
MOLLETT



MARY
LOU
PLYMALE
HOMECOMING
QUEEN



MARY GARVER



IRENE GLAZE

OUR TEAM

Under the lights at Marietta, the Pioneers literally passed over the heads of the Ewingmen to a 28-0 triumph. The Marietta eleven instituted a passing attack which the Cards were unable to halt. The Cards fell short each time on their counter-offensive despite several fine dashes by Learish and Mann. Injuries kept four regulas on the bench as Henry and Frazier, backs, and Augspurger, end, were unable to start, and Hinton, end, was injured in the opening minutes of the game.

The Mt. Union game found Otterbein a defensive team, but a superb defensive team. After three quarters without a real touchdown threat, the climax came in the fourth when traditional goal line stands twice stopped the Mounties. In the closing minutes the visitors struck with a long pass to the end zone, clinching the battle 7-0.

The five seniors on the Otterbein squad who will be playing their last Home-coming Game against Ashland are Harley Learish, hard driving halfback and chief offensive threat; Paul Ziegler, scrappy end; Arthur Duhl, Nate Shope, and Walter Arnold, hard driving guards. Ashland's record has not been too impressive, and the Cards are determined

to avenge the defeat of last year as well as to make Home-coming a complete success.

Numerous injuries and lack of reserve strength have largely wrecked the Cardinal hopes for success on the gridiron to date. In spite of this the Otterbein eleven has never lost its traditional fighting spirit, especially in the shadow of their own goal posts.

The opening game with Muskingum was a heart-breaker to the Cardinal cause when the Muskies, by virtue of two last quarter touchdown thrusts, emerged victorious 12-6. After Ziegler recovered a fumble deep in enemy territory, Learish scored early in the second quarter from the four yard line. During the first half the Cards completely dominated the game, but the steady flow of substitutions in the final half, encouraged the Muskies to outplay and outscore the tiring Otterbein eleven.

The following week-end the scrappy eleven of Allegheny College, Meadville, Pa., proved to be most unkind hosts, trouncing the visiting Cardinals 32-0 in their first out-of-state game in more than twenty years. Cardinal hopes were dimmed by injuries to Henry and Frazier, hard running backs, and Augspurger, promising Sophomore end.

OTTERBEIN SEAL
STATIONERY
JEWELRY
PENNANTS
MEMO BOOKS
STUDENT SUPPLIES
NOTE BOOKS
FOUNTAIN PENS
DICTIONARIES
STUDENT OUTLINES
UNIVERSITY
BOOKSTORE

Compliments
Cheek Appliance Co.
SMALL RADIOS

11 N. State St.

Phone 45

YANTIS'S CLEANERS

Welcome Alumni!

Call Messner for
Dry Cleaning



COACH H. W. EWING

"OUR COACH"

Mr. Ewing has spent three years with the Cardinals. He received his playing experience at the University of Nebraska where he was All Missouri Valley Guard for three years and "All Western" two years. Ewing was assistant coach at Nebraska and had charge of athletics before coming to Otterbein successively at Morningside College, South Dakota State, Ohio Wesleyan and Miami University.

The Cardinals this year is largely made up of Sophomores. There being only one veteran in the line and two in the backfield. A close game is anticipated today with Ashland as the two schools are closely matched as to size of student bodies.

COMPLIMENTS



C & C STORE

5c to \$1.00

STATE THEATRE BLDG.

EMERSON

"Little Miracle"

5-Tube Superhetrodyne Radio with
7-Tube Performance.

In walnut cabinet \$ 9.95

In ivory cabinet 12.95

WILKIN & SONS HARDWARE

38-40 N. State St.

Phone 7

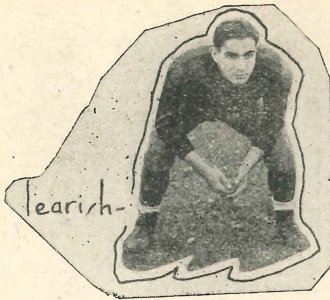
WELCOME
ALUMNI!

Brinkman's Drug Store

2 S. State St.

Phone 217

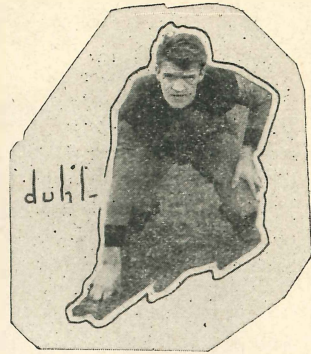
OUR CO-CAPTAINS



HARLEY LEARISH

A Jamestown, Pa. product. Plays right halfback, weight 174 pounds, with a sturdy 6-foot build. Vice president Varsity "O" and vice president of Country Club. A good ground gainer and a dead tackler.

"Best of Luck, Harley"



ARTHUR DUHL

Hails from Jackson, Ohio. Plays right guard, weights 174 pounds, and a height of 5 ft., 11 in. A student of the pulpit; a member of Zeta Phi fraternity. "Art" is a tough smashing guard and puts out everything for the Cardinals.

"Best of Luck, 'Art' "

Compliments

of

SCHOTT'S GARAGE

Welcome Alumni!

**HOSIERY DRY GOODS
NOTIONS**

HUHN'S

Welcome To All

ALUMNI

Glad To See You Back

E. J. Norris & Son

Compliments of

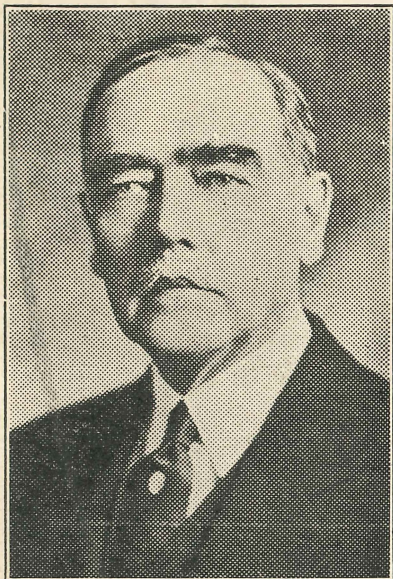
Hindman Shoe Repair

12 W. College Ave.

**KEYES MOTOR
SALES**

Welcome Alumni!

Bish's Barber Shop



GREETINGS AND A WELCOME—

To our friends from near and far, both young and old; to alumni and all others, a warm welcome to our campus, to our homes and to our hearts. I trust your stay and your contacts while here may kindle in your hearts anew the fires of love and loyalty for "dear old Otterbein".

Sincerely yours,

W. G. Clippinger.

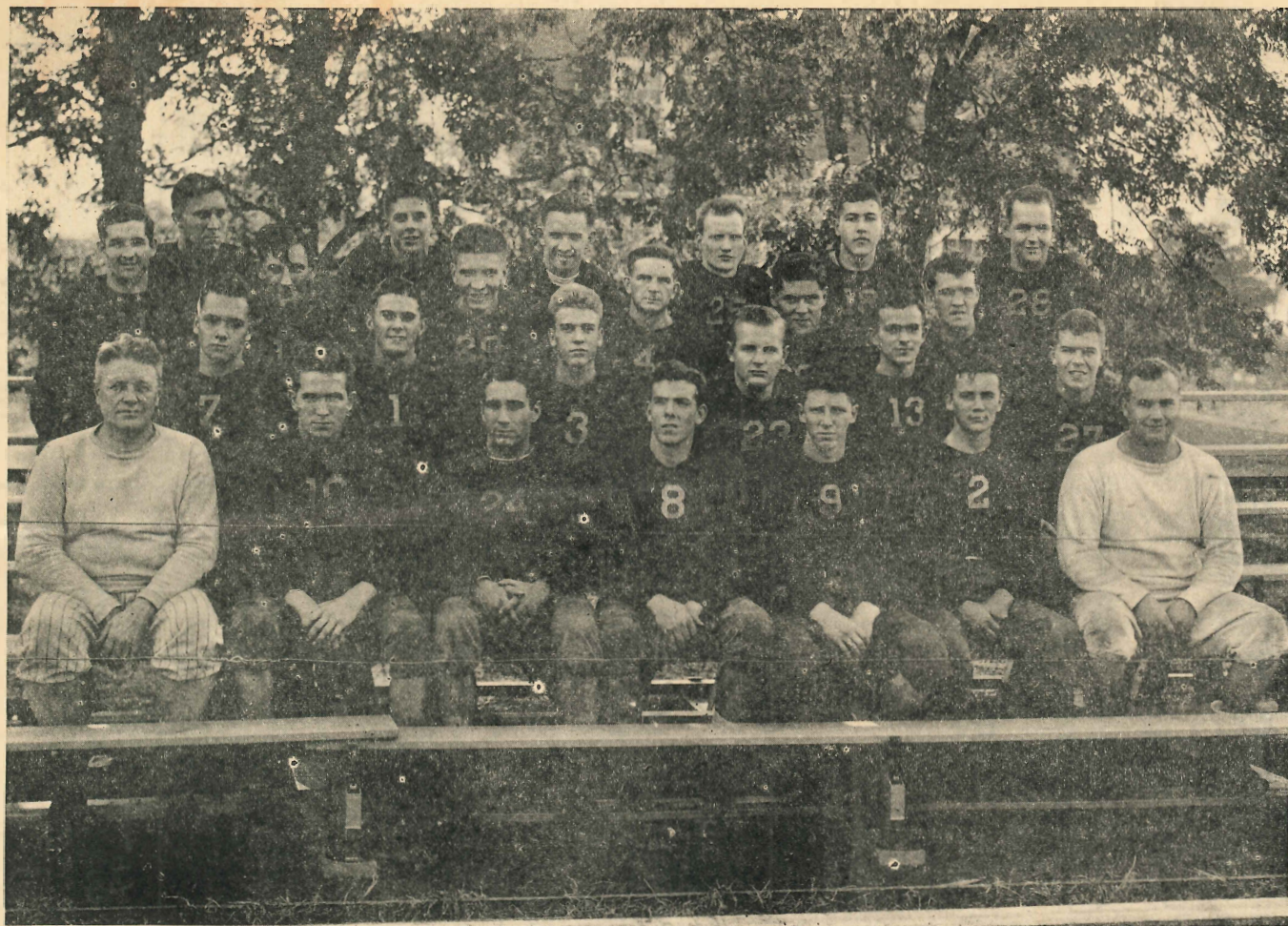
**TRY OUR DELICIOUS
HAMBURGERS**

MILK SHAKES

CHEESEBURGERS

DELUXE STYLE

SID'S HAMBURGER SHOP



OTTERBEIN SQUAD

1st. Row—Novotny, Stevens, O'Hara, Ritter, Learish, Mann, Ewing. 2nd. Row—Grimm, Be'ner, Newton, Neff, Walke, Wagner.
 3rd. Row—Duhl, Osterwise, Arnold, Elliott, Frazier, Shope. 4th. Row—Courtright, Clippinger, Pringle, Briggs, Augspurger, Johns.

VARSITY "O"

The Varsity "O" organization is wishing every returning alumni a happy and joyous week-end and to the team "The best of luck that can bestowed upon them."

On the campus the Varsity "O" is the strongest organization and we hope to continue being so throughout the years to come.

This year we have taken up the duty of preparing programs for each sport event throughout the year, and along with this, a bigger and better program for our fall and winter homecoming.

Each year the Varsity "O" present its new members with one sweater, and at the conclusion of each year every senior belonging to this organization will be presented with a Varsity "O" charm.

The Varsity "O" is trying to resume its former prominent position among the campus clubs. Won't you help the "O" men along by urging your friends to buy a copy of this program, too? Thank you.

Dwight Ballenger, President.

Harley Learish, Vice Pres.

Perry Wysong, Sec. and Treas.

COMPLIMENTS

Beck's Confectionery

LUNCHES

MILK SHAKES

GREETINGS

TO THE

QUEEN

Fenton's Dry Cleaners

GOOD LUCK

TEAM

FARNLACHER

JEWELER

Grubby's Restaurant

Hamburgers, Cigars, Candy
Cigarettes

Cor. State and Main Sts.

Vello Alumni

OR GOOD HOME COOKED FOOD

HOME-MADE PIES

REASONABLE PRICES

FOUNTAIN SERVICE

You're Welcome

— AT —

NORTH END RESTAURANT

50 N. State St.

PAINTS

COAL

CELIUMBER CO.

Fraternities — " — Saddles" — Sororities

FLOWERS

For All Occasions

— SEE —

Ernsberger's

WELCOME

ALUMNI!

**KING'S SERVICE
STATION**

STATE

THEATRE

Students Council Wishes

To Thank

H. P. Samme

For their gift

Decorated Frate

size Car