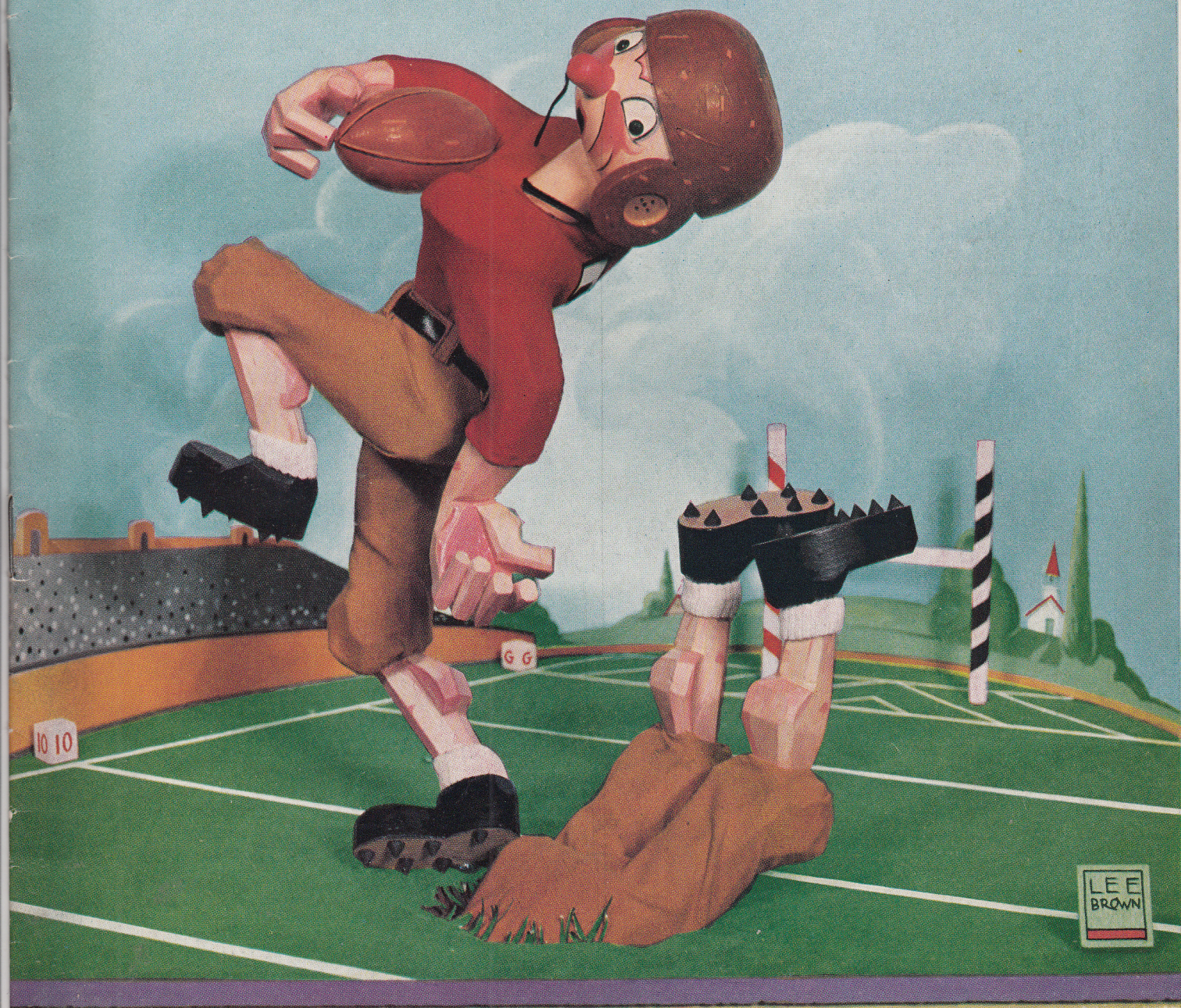


# SOUVENIR

Official  
CAPITAL vs. OTTERBEIN  
November 9, 1940

# PROGRAM

Price 10¢





# SOUVENIR

Official  
CAPITAL vs. OTTERBEIN  
November 9, 1940

# PROGRAM

## HIGHLIGHTS ON HOMECOMING FOR GRADS AND STUDENTS

Homecoming is an event especially arranged for the pleasure of you alumni, who should tear yourself loose from your vocational moorings at least once a year and hitch-hike your several ways back to this old and revered educational mecca, the Capital campus, there to recapture a waft of ye old Capital spirit, to drown your sorrows in a cup of Lehmann Hall cider, to roam again down corridor and campus walk where your footsteps fell these years ago. So now it is homecoming again. We hope it will be a treat. Alumni, we welcome you!

Two things are necessary to make homecoming a success. The one is a pretty homecoming queen. Miss Marian Dustman, Senior from Youngstown, Ohio, the students' choice, will please the most discriminating, and all the others too. On the right you see her in the midst of a football atmosphere. Soon you will see her in person as she comes out to play her role in today's drama. See the schedule of the program elsewhere in this program.

The second necessity is to have Otterbein's Cardinals as the opponents in the homecoming game, and then to win the game. Well, the Cardinals will be on hand, but it would be dangerous to predict the outcome of this fracas. It is as hard to fathom as pre-last Tuesday's election results.

With copy space being limited in this edition of the Official Football Program, we will touch only briefly on the relative strength of the opponents in today's blitzkrieg. But, mind you, in a Capital-Otterbein game the dope bucket is not reliable. It makes no difference how many games either team may lose to other opponents, when the Purple and White meet the Cardinals the picture changes and it is a fight-to-the-finish affair. So brace yourselves for one of the grimmest battles ever fought on yonder gridiron.

Let us take a glance at the score boards. Thus far Capital's purple warriors have defeated Kenyon, Marietta, played Bowling Green to a 7-7

tie, lost to Heidelberg, Ohio Northern and Valparaiso. In these games Capital scored a total



Homecoming Queen Marian Dustman

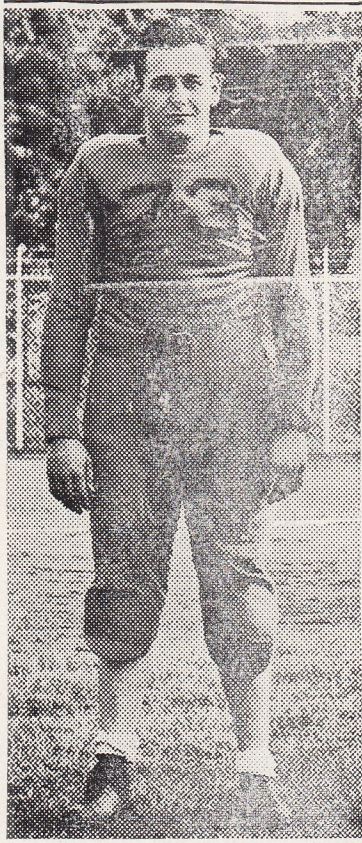
of 68 points as against 89 by the opposition. In its Ohio conference competition Capital has won two games, lost two games and tied one, hence has broke even. Capital's scoring machine ground out 20 less points than the teams opposed garnered for themselves. The total stands: Capital 29; opponents 69.

Continued on page 7

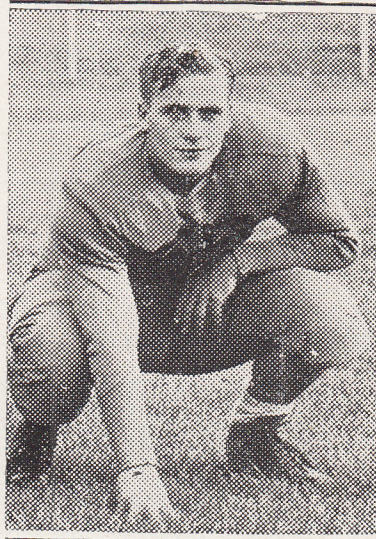
WELCOME ALUMNI



HELLO OTTERBEIN



*BILL NOLL*



*DICK GANTZ*



*JACK WELLS*

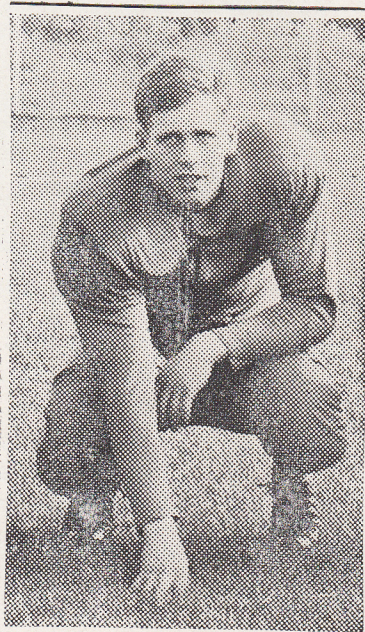
These  
**OTTERBEIN  
VETERANS**

Will See Action

Today



*JIM EBY*

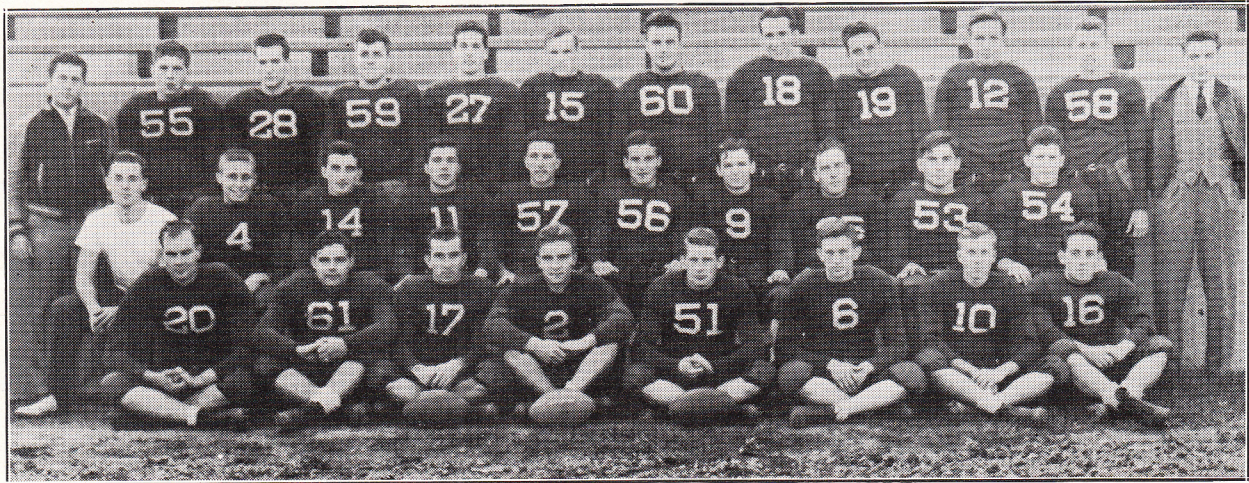


*RAY MEHL*



*RALPH CASPER*

# 1940 Capital University Football Squad



*Bottom Row*—Left to right—Seas, Donovan, Hupp, Berner, Bauer, Winterhoff, Klie, Martin. *Second Row*—Pflueger, Trainer; Mathews, R. Heilman, Elsass, Pesek, J. Disbro, Havel, Oakley, Trott, Brueckner. *Back Row*—Coach Davidson, Distlehorst, G. Disbro, Slater, Hoprich, Tegtmeier, Kirkpatrick, Hamilton, Kalish, Grable, Wietzke, C. Heilman, Asst. Coach.

FOR GREETING CARDS . . . GIFTS . . .  
 MEN'S FURNISHINGS . . . LADIES'  
 HOSIERY AND UNDERWEAR . . .  
 NOVELTIES . . . NOTIONS

*Go to*

**Hughes Dry Goods Co.**

537 South Drexel Avenue  
 Opposite Post Office

We Will Take Mother's Place

***Alene* LAUNDRY AND  
 DRY CLEANING**

*Shirts To Your Perfection*

454 - 464 E. Main Street  
 ADams 4205

GENE UBER, Campus Representative

*Compliments*

**Ideal Dry Cleaners  
 Athletic Equipment Co.**

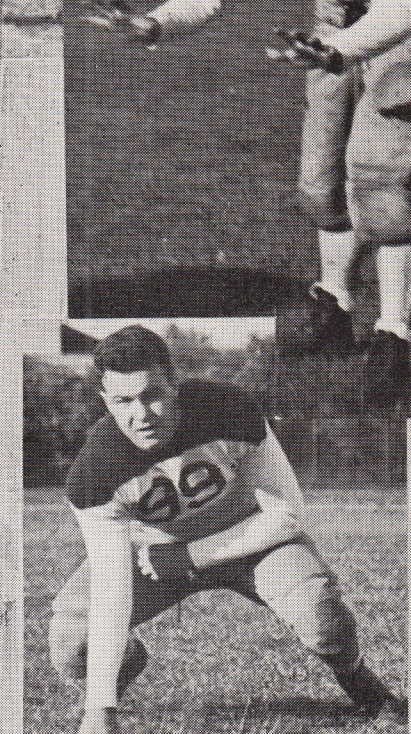
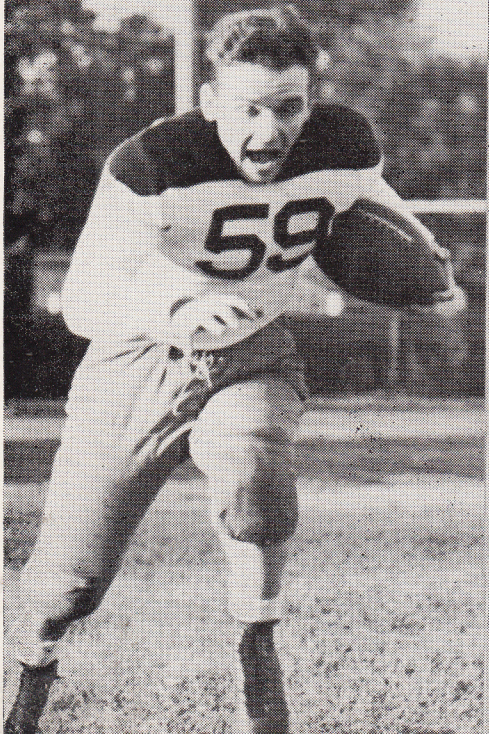
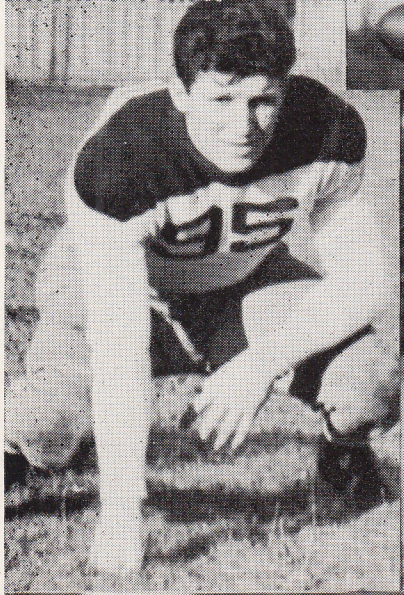
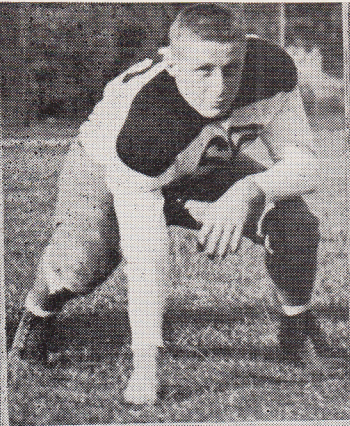
2367 - 69 North High Street

Columbus, Ohio

BRING YOUR CAR UP TO  
 STANDARD  
 AT

**Your Bexley  
 SOHIO SERVICE  
 STATION**

Main and Pleasant Ridge



BEXLEY PARK LAWN SEED IS USED EXCLUSIVELY BY CAPITAL UNIVERSITY  
ON CAMPUS AND ATHLETIC FIELD

Mixed and Packed by  
**COMMUNITY HARDWARE**

EV. 2915

2359 E. Main St., Bexley

A. C. Helmbrecht

**Program of Events**

- 1:40 Procession of Band with the Queen and her court.
- 1:45 Introduction and coronation of the Queen.
- 1:50 Determination of choice of goals and kicking by flip of coin by Queen.
- 1:55 The seating of Queen in Reserved section of stadium.
- 1:57 Raising of Flag.
- 2:00 Game starts.
- 4:30 Reception of alumni at Loy Gym. Refreshments.
- 9:00 Senior Party at Seneca Hotel. Alumni, students of Capital and Otterbein, faculty members, football players and coaches are invited.

**Acknowledgments**

Cars used in the procession were furnished through the courtesy of the Packard Columbus, Inc., 288 E. Long St., Adams 4121.

Continued from page 3

To date Otterbein has played seven games, has

won three of them and lost four. The total points scored are: Otterbein 64; opponents 89. It should be noted that Otterbein's opponents scored the same number of points as did Capital's opponents. In the Ohio conference Otterbein has won one out of four games and has scored only 18 points as against the 70 hung on the board by opposing teams. Otterbein ranks 16th in the conference while Capital holds 9th place.

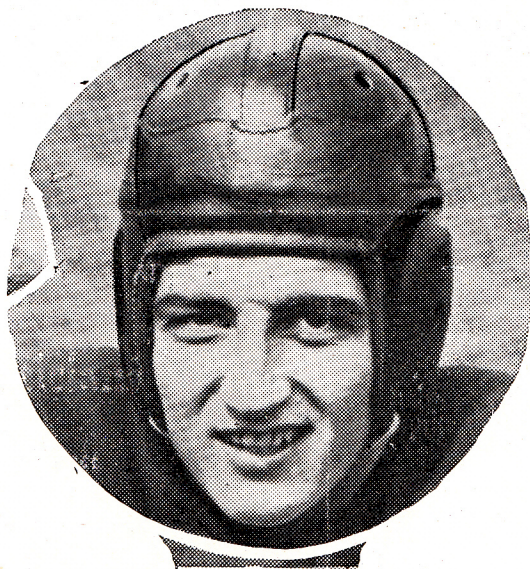
The Capital and Otterbein teams are sufficiently evenly matched to make the outcome a toss-up. Add to this the furious competition injected into the clash between these two historic rivals and anything can happen. While you are watching the boys go after each other keep an eye on these players: Capital's fullback, Paul Elsass, quarterback, Havel, halfbacks, Pesek and Staker, ends, Heilman and Bauer. These lads have acquitted themselves unusually well, thanks to the support they have gotten from the rest of their team-mates.

On the Otterbein eleven these boys should hold the spotlight: right halfback Eby and fullback Ernsberger, who have been bearing the brunt of the attack in previous Otterbein games and who can be counted on to do their part today.

Now, let's focus our optics on the gridiron and wait for the show to begin. After it is all over with, go to the Loy gymnasium where the Homecoming Committee will entertain all of you alumni, where you can meet and chat with many of your old friends, both from among the alumni and the folks here at Capital University.

**IDENTITY OF PLAYERS ON LEFT**

Top Row; left to right. J. Disbro, Mathews, Trott, Oakley. Center row:- Brueckner, Hamilton, Pesek; lower center:- Bauer. Bottom row:- Havel, Kirkpatrick, Elsass



HEILMAN

*Looker's*

**AUTOMOTIVE SERVICE**

PLEASANT RIDGE

at

MAIN STREET

FA. 1164

Authorized

United Motors Service

# Do YOU SMOKE THE CIGARETTE

## Capital

LE	LT	LG	C	RG	RT	RE
Heilman	Distlehorst	Mathews	Disbro	Brueckner	Hamilton	Bauer
14-68	55-69	4-66	56-60	54-95	18-96	51-58

QB  
Elsass  
11-62

LHB  
Pesek  
57-67

RHB  
Staker  
3-83

FB  
Havel  
9-59

### SQUAD LIST

Nos.	Nos.	Nos.
51-58 Bauer, e	27-37 Hoprich, e	59-86 Slater, t
2-63 Berner, h	17-81 Hupp, h	11-62 Elsass, q
54-95 Brueckner, g	19-79 Kalish, e	3-83 Staker, h
56-60 Disbro, c	10-70 Klie, q	15-78 Tegtmeier, g
55-69 Distlehorst, t	60-99 Kirkpatrick, c	53-65 Trott, t
61-98 Donavan, g	16-77 Martin, g	58-88 Wietzke, c
12-91 Grable, t	4-66 Mathews, g	6-72 Winterhoff, h
18-96 Hamilton, e	25-64 Oakley, t	
9-59 Havel, h	57-67 Pesek, h	
14-68 Heilman, e	20-85 Seas, t	

### OFFICIALS

Umpire ..... R. H. Karch, Ohio State





GARETTE THAT

# Satisfies

THAT'S COOLER... BETTER-TASTING  
DEFINITELY Milder



## Otterbein

LE Cover 5	LT Elliott 29	LG Gantz 10	C Strine 22	RG Underwood 16	RT Casper 28	RE Mehl 19
			QB Noll 20			
	LHB Eby 12				RHB Wells 2	

FB  
Ernsberger  
15

### SQUAD LIST

No.	No.	No.
25 Bailey, c	10 Gantz, g	27 Stevenson, t
11 Carris, hb	21 Holford, t	26 Stevenson, e
28 Casper, t	14 Johns, e	22 Strine, e
18 Clippinger, c	19 Mehl, e	16 Underwood, g
17 Coldiron, g	13 Metz, e	4 Wagner, g
1 Cornell, g	20 Noll, qb	2 Wells, hb
12 Eby, hb	7 Phillians, hb	24 Wilson, t
29 Elliott, t	3 Sandy, hb	5 Cover, e
15 Ernsberger, fb	23 Smith, fb	

### OFFICIALS

Head Linesman ..... Ivan Davis, Ohio U.  
Referee ..... J. M. Burghalter, Heidelberg



Buy any Kroger brand item, like it as well as or better than any other, or return unused portion in original container and get FREE same item in any brand we sell regardless of price!



**KROGER STORES**

## Capital Roster

Nos.	Pur.	Wb.	Player	Pos.	Wt.	Ht.	Year	Home Address
51	58		Bauer, C.	E	148	5-6	Jr.	Youngstown
2	63		Berner, D.	H	155	5-10	Soph.	Norwalk
54	95		Brueckner, T.	G	181	5-10	Soph.	Chelsea, Mich.
56	60		Disbro, J.	C	160	5-9	Jr.	Defiance
55	69		Distlehorst, R.	T.	195	5-11	Soph.	Columbus
61	98		Donavan, P.	G	193	5-8	Jr.	Reynoldsburg
11	62		Elsass, P.	Q	155	5-8	Senior	Waynesburg
12	91		Grable, H.	T	190	6-2	Soph.	Mt. Healthy
18	96		Hamilton, J.	E	185	6-1	Sr.	Reynoldsburg
9	59		Havel, J.	H	152	5-7	Jr.	Chicago, Ill.
14	68		Heilman, R.	E	168	5-11	Sr.	Bellevue
27	87		Hoprich, H.	E	170	6-1	Soph.	Salem
17	81		Hupp, G.	H	160	5-8	Soph.	Gratiot
19	79		Kalish, R.	E	180	6-2	Soph.	Bexley
10	70		Klie, R.	Q	135	5-8	Soph.	Columbus
60	99		Kirkpatrick, J.	C	205	6-2	Jr.	Frankfort, Ind.
16	77		Martin, D.	G	150	5-7	Jr.	Circleville
4	66		Mathews, R.	G	163	5-10	Soph.	Cincinnati
25	64		Oakley, C.	T	175	5-8	Jr.	Columbus
57	67		Pesek, A.	H	180	5-11	Sr.	Crestline
20	85		Seas, G.	T	195	6-0	Sr.	Marion
59	86		Slater, C.	T	210	5-11	Soph.	Hebron
3	83		Staker, L.	H	140	5-8	Soph.	Columbus
15	78		Tegtmeier, H.	G	165	6-1	Sr.	Burbank
53	65		Trott, P.	T	175	5-11	Jr.	Columbus
58	88		Wietzke, W.	C	147	5-10	Soph.	Chicago, Ill.
6	72		Winterhoff, E.	H	152	5-6	Jr.	Ashville
			Mgr.—Mehl, Gerhardt				Senior	Youngstown

## CAPITAL'S CHOICE

Arrange NOW

for

Your next BANQUET or PARTY

CALL MA. 2341

**Seneca Hotel**

CHAS. L. BEATHARD, Manager

## Traditional

For the past 25 years this store has been a neighbor of Capital University, so we repeat

*It's always fair weather*

*When good fellows get together*

at

**WENTZ PHARMACY**

Just across the campus

**Wendler's**  
IN BEXLEY  
Restaurant  
HOME STYLE DELICIOUS FOOD  
FINE Chocolates  
THE BEST YOU EVER TASTED  
FA. 0514 2353 E MAIN ST. COLUMBUS, BEXLEY, OHIO

## Otterbein Roster

No.	Player	Pos.	Wt.	Ht.	Year
25	Bailey, F.	C	181	5-9	Soph.
11	Carris, P.	B	158	5-11	Jr.
28	Casper, R.	T	193	5-11	Soph.
18	Clippinger, J.	C			Sr.
17	Coldiron, M.	G			Sr.
1	Cornell, R.	G			Jr.
12	Eby, J.	B	165	6-0	Soph.
29	Elliott, H.	T			Sr.
15	Ernsberger, W.	B			Soph.
10	Gantz, R.	G	165	5-7	Soph.
21	Holford, W.	T	198	6-1	Soph.
14	Johns, W.	E			Sr.
19	Mehl, R.	E	180	5-11	Soph.
13	Metz, R.	E	178	5-10	Soph.
20	Noll, W.	B	180	5-8	Jr.
7	Phillians, M.	B			Soph.
3	Sandy, W.	B			Soph.
23	Smith, J.	B	187	5-11	Soph.
27	Stevenson, R.	T			Soph.
26	Stevenson, B.	E	202	6-2	Soph.
22	Strine, F.	C			Jr.
16	Underwood, W.	G			Sr.
4	Wagner, M.	G	180	5-10	Soph.
2	Wells, J.	B	156	5-8	Soph.
24	Wilson, H.	T			Jr.
5	Cover, B.	E			Jr.

JOIN YOUR FRIENDS

AT

### GRAY'S Drug Store

*Cor. Drexel and Main Sts.,  
Opp. Capital University*

for Refreshments After the Game  
and for Every Kind of Service a

Good Drug Store Renders

*Prompt Service*

*High Quality*

*Cut Prices*

# MOORES & ROSS ICE CREAM

## Bexley Barbers

### Quality Service

2354 EAST MAIN STREET

*Specializing in Student Hair Cutting  
Students are Always Welcome*

V. L. EVANS, Prop.

M. E. SECKEL

---

Your Dry Cleaning is Best Taken Care of

AT

## CAPITAL CLEANERS

2141 East Main Street

FA. 2218

Alterations and Repairing Neatly Done

Agent for Courtesy Laundry

---

*"Fenton is Famed"*

for an unusual

**DRY CLEANING SERVICE!**

The prices are extremely moderate.



Free Call and Delivery

34 Neighborly Stores

## There's Nothing Like GAS

For

Cooking

Water Heating

Refrigeration

Home Heating

---

## WHY WASH AT HOME?

FRANKLIN - AMERICAN  
THE IVORY SOAP LAUNDRY  
ZORIC DRY CLEANING CO.

ADams 6251

577 N. 4th St.

COLUMBUS, OHIO

---

Variety Merchandise School Supplies  
At Syndicate Prices

JOHNSON'S  
5, 10 and 25c Store

*Opposite Capital University*

---

## MOODY & STRALEY

FUNERAL HOME

East Main and Parkview Ave.

EVergreen 2613

# NEW CHEERS, YELLS AND THE ALMA MATER

## HELLO VISITORS

Hello Visitors  
Hello Visitors  
Capital Says Hello

## GO CAP GO

Go Cap Go  
Go Cap Go  
Hit 'em High  
Hit 'em Low  
Go Cap Go

## YEA TEAM

Yea Team  
Yea Team  
Let's Go  
Let's Fight  
Let's Win

## I OCOMOTIVE

(whistle)—Boom  
(whistle)—Boom  
(whistle)—Boom  
Rah — Rah — Rah — Rah  
Cap — ital — Cap — ital  
(repeat two more times)  
FIGHT

## CHANT

Cap-i-ta-al  
(chant three times)  
Fight Fight Fight

## CAP REGULAR

C—C—C-A-P  
(clap)  
P—P—P-I-T  
(clap)  
T—T—T-A-L  
C-A-P-I-T-A-L  
Capital

## WE'VE GOT IT

We've got the team  
We've got the yell  
We've got the boys  
To ring the bell  
So Fight Team  
Fight Team  
Fight Fight Fight

## C'MON PURPLE

C'mon Purple  
C'mon White  
C'mon Capital  
Let's Fight

## SKY ROCKET

(whistle)  
Boom  
Ah  
Capital

## FIGHT TEAM FIGHT

Fight Team Fight  
Fight Team Fight  
Fight Team Fight Team  
Fight Team Fight

## ALE-GE-NEE

Ale-ge-nee-ge-nac-ge-nac  
Ale-ge-nee-ge-nac-ge-nac  
Oo-rah Oo-rah  
Fight Fight Fight

## PURPLE AND WHITE

Fight Fight Purple and  
White  
Fight Fight Purple and  
White  
Smash 'em Bust 'em  
That's Our Custom  
Fight Fight Purple and  
White

*It Pays to Look Your Best*

To help you attain this goal  
is the objective of our service

## THE Powder Puff Beauty Salon

2230 East Main Street

Opposite the Campus

FA. 3776

## THE ALMA MATER

O CAPITAL, TO THEE WE PLEDGE DEVOTION

See. F. Dell '25

Sibelius - Mayes

*with devotion, but not too slowly*

O Cap- i- tal, to thee we pledge de-vo-tion; In ev-'ry heart we'll  
To thee we owe what-e'er of truth we cher-ish; Thy bound-less love has  
Thy swords are we, and shields to guard thy glo-ry; Thy lamps are we to

build for thee a shrine, Un-til from o-cean side to end-less o-cean  
all our wants sup-plied; Liv-ing in us thy soul shall nev-er per-ish,  
be- con far and near; Thy pens are we to write in death-less sto-ry

Thy name a-lone in ra-diant splen-dor shine! Un-til from o-cean  
A-live in thee shall we be glo-ri-fied. Liv-ing in us thy  
Lives that shall hon-or thee, O mo-ther dear. Thy pens are we to

*Allegretto*

side to end-less o-cean Thy name a-lone in ra-diant splen-dor shine!  
soul shall nev-er per-ish, A-live in thee shall we be glo-ri-fied.  
write in death-less sto-ry Lives that shall hon-or thee, O mo-ther dear.

K. Sandhu '29

## PRIDE OF THE PURPLE

Pride of the Purple!  
Men of Capital, we join to cheer you,  
Fight hard, nor fear you,  
Battle for your banner bright.  
The Purple royal  
Trusts in her champions loyal;  
Then, go fight, *fight, Fight, FIGHT,*  
*FIGHT* for the White  
And the Purple of Capital!

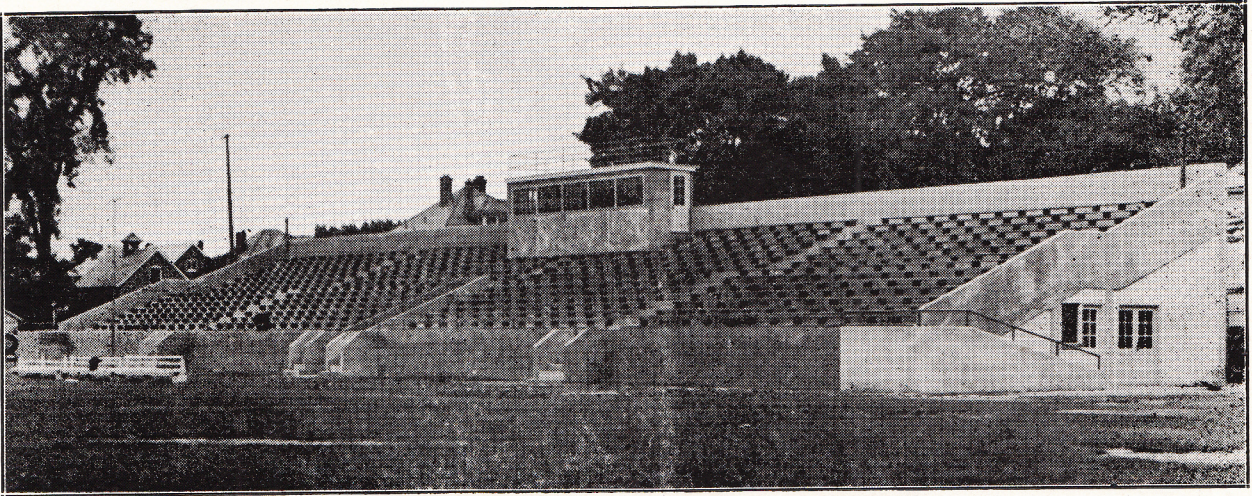
C-A-P, C-A-P, C-A-P-I-T-A-L  
V-I-C, V-I-C, V-I-C-T-O-R-Y  
Vic'try for the Purple and the White  
We're with you.

Pride of the Purple!  
Into conflict go, your colors flying,  
Foeman defying  
Confident of skill and might.  
Victors, we'll raise you,  
Vanquished, we still shall praise you.  
Then, go fight, *fight, Fight, FIGHT,*  
*FIGHT* for the White  
And the Purple of Capital.

# THESE FOLKS BUILT THIS FINE STADIUM

---

---



*Compliments of*

## ROBERT W. SETTERLIN & SONS

General Contractors and Builders of this Stadium

1030 W. 3rd Avenue

UNiversity 9413

---

READY MIXED CONCRETE FOR THIS  
STADIUM

*Furnished by*

**F. W. Slotter Trucking Co.**

1997 JACKSON PIKE

Business Phone  
GARfield 6444

Residence Phone  
EVERgreen 6538

---

**Benham & Richards**

*Architects*

167 E. State Street

Columbus, Ohio

Architect

For Capital University Library, Stadium and  
Memorial Gateway

*Compliments of*

**The Hollis Electric Co.**

1667 MILFORD AVE.

LAwndale 8938

RAndolph 2492

---

*Established 1890*

The fine Redwood Seats — Millwork and Lumber  
for Stadium was furnished by us

**The McNally Lumber Co.**

*"Special Millwork"*

2034 Leonard Ave.

FA. 2128

---

## Individuality

The art of deftly expressing that charm which is in you alone.

### Paul's Hairdressers

2412 EAST MAIN STREET

Please Call EVERgreen 4019

## Say it with Flowers

— from

### VIERECK

THE FLORIST

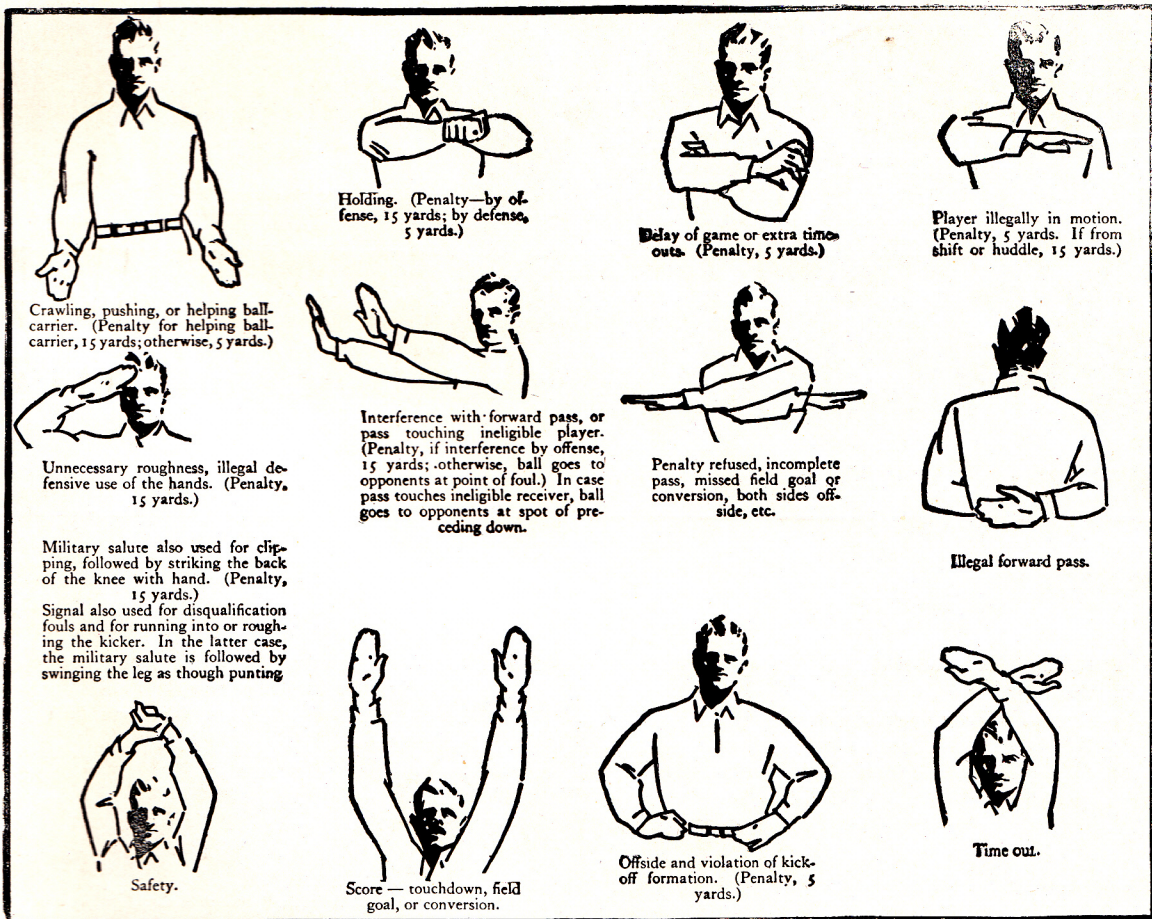
84 S. 4th Street

ADams 1201

Reasonable Prices

Open Evenings  
and Sundays

## SIGNALS



Courteous Service

ADams 5747

## Harris, Opticians

106 East Broad Street

COLUMBUS, OHIO

## KEEP FIT — play BADMINTON

It's everybody's game — men, women, boys, girls — year around. Your Spalding dealer will help you get started right. Spalding Badminton equipment is popularly priced.

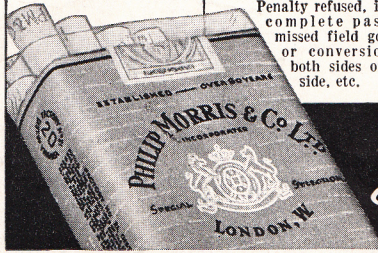
## SPALDING

*A. G. Spalding & Bros.*  
DIVISION OF SPALDING SALES CORPORATION

*Athletic  
Equipment*

# JOHNNIE "Calls" THE SIGNALS!

 <b>Crawling or pushing. 5 yards; helping ball carrier, 15 yards.</b>	 <b>Holding. (Penalty—by offense, 15 yards; by defense, 5 yards.)</b>	 <b>Delay of game or extra time-outs. (Penalty, 5 yards.)</b>	 <b>Player illegally in motion. (Penalty, 5 yards. If from shift or huddle, 15 yards.)</b>	 <b>Interference with forward pass, or pass touching ineligible player. (Penalty, if interference by offense, 15 yards; otherwise, ball goes to opponents at point of foul.)</b>	 <b>Illegal forward pass.</b>
 <b>Safety.</b>	 <b>Penalty refused, incomplete pass, missed field goal or conversion, both sides off-side, etc.</b>	 <b>Unnecessary roughness, illegal defensive use of the hands, clipping, running into or roughing the kicker. (Penalty, 15 yards.)</b>	 <b>Score—touchdown, field goal, or conversion.</b>	 <b>Offside or violation of kick-off formation. (Penalty, 5 yards.)</b>	 <b>Time out.</b>



FOR TRUE SMOKING PLEASURE  
*Call for* **PHILIP MORRIS**

## Penalties

- |   |   |  |
|---|---|--|
| 1 Holding by defensive side   | 6 Illegal tackling or blocking                                | 12 Substitute failing to report  |
| 2 Crawling  | 7 Offside   | 13 Backfield in motion   |
| 3 Attempt to draw opponents offside   | 8 Encroachments on neutral zone                               | 14 Taking time out more than three times during half   |
| 4 Delaying game   | 9 Feint to snap ball  | 15 Player out of bounds  |
| 5 Taking more than two steps after fair catch   | 10 Illegal position   | 16 Running into kicker   |
|   | 11 Interference with opponents before ball is put in play     |  |
| <b>LOSS OF FIFTEEN YARDS</b>  |   |  |
| 17 Holding by side in possession of ball  | 24 Tripping   | 31 Individual going on field without permission  |
| 18 Hurdling   | 25 Leaving field during one-minute intermission               | 32 More than one attendant going on field  |
| 19 Coaching from sidelines  | 26 Unsportsmanlike conduct                                    | 33 Failure to come to one-second stop in shift play  |
| 20 Intentional grounding of forward pass. In addition to 15 yard penalty, team also loses down. | 27 Piling up  | 34 Roughing the kicker   |
| 21 Interference with fair catch   | 28 Tackling out of bounds                                     | 35 Clipping  |
| 22 Substitute communicating before first play   | 29 Pushing, pulling, interlocking interference, etc.          | 36 Illegal return to game  |
| 23 Tackling or throwing fair catcher  | 30 Running into opponents illegally                           | 37 Team not ready to play at scheduled time  |
| <b>OTHER PENALTIES</b>  |   |  |
| 38 Foul within one-yard line: half distance to goal line  | 40 Slugging: half distance to goal and disqualification       | 42 Any act committed by an outsider but affecting the game: the referee is empowered to impose such penalty as justice may require |
| 39 Interference with forward pass by defense: loss of the ball                                  | 41 Flagrant roughing of kicker: 15 yards and disqualification |  |