

Otterbein University

Digital Commons @ Otterbein

1907-1958 Productions

Productions 1907-1961

2-28-1953

The Bat

Otterbein University

Follow this and additional works at: https://digitalcommons.otterbein.edu/production_1907-1958



Part of the [Acting Commons](#), [Dance Commons](#), and the [Theatre History Commons](#)

Recommended Citation

Otterbein University, "The Bat" (1953). *1907-1958 Productions*. 92.
https://digitalcommons.otterbein.edu/production_1907-1958/92

This Book is brought to you for free and open access by the Productions 1907-1961 at Digital Commons @ Otterbein. It has been accepted for inclusion in 1907-1958 Productions by an authorized administrator of Digital Commons @ Otterbein. For more information, please contact digitalcommons07@otterbein.edu.

THE

BAT



CAP & DAGGER

The Dramatic Club of Otterbein College

Westerville, Ohio

PRESENTS

THE BAT

A Mystery Comedy in Three Acts

BY MARY ROBERTS RINEHART

& AVERY HOPWOOD

Directed by LLOYD LEWIS

Business Manager

KEN KOHN

Technical Director

BOB DUNHAM

This play is produced by special arrangement with

Baker's Plays — Boston

February 28, 1953

COWAN MEMORIAL HALL

THE TRADITION

Tonight's production marks the sixth annual student presentation since the tradition was revived in 1948. It is entirely student cast and produced under the auspices of Cap and Dagger Dramatic Society.

ABOUT THE PLAY

What *is* the Bat? *Who* is the Bat? No one seems to know!

At any rate, *Something* stalks the late Courtleigh Fleming's home "Cedarcrest", recently rented to a middle-aged spinster with a nose for clues. She quickly finds herself in a maze of unknown identities, tragic murders, hidden blueprints, and secret rooms. The identification of an unknown element might solve the mystery . . .

What *is* the Bat? *Who* is the Bat? Can *you* guess?

SYNOPSIS OF SCENES

Act I. The living room in Miss Van Gorder's Long Island house.

Act II. The same, immediately after Act I.

Act III. The garret of the same house after Act II.

Westerville Radio & Electric

PAUL GORSUCH

RONALD HULSE

RADIOS — REFRIGERATION — HOME APPLIANCES
ELECTRICAL MAINTENANCE

20 North State Street

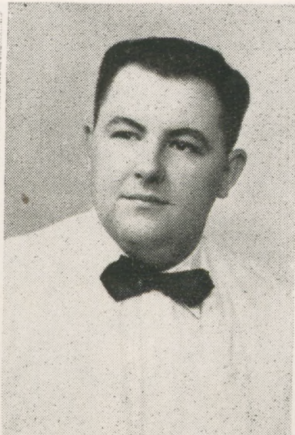
Westerville, Ohio

OUT IN FRONT

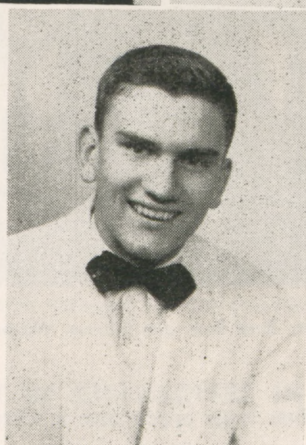
Mary Lou Poorman



Bob Moore



Sally Hall



Bob Long



Nita Shannon

MARY LOU POORMAN (Miss Cornelia Van Gorder) was graduated from Southmont High School in Johnstown, Pennsylvania where she did no work at all in dramatics. In her first year at Otterbein she played the part of Maria in *Twelfth Night*, and from this beginning proceeded to *Goodbye My Fancy*, *Blithe Spirit*, and *Two Blind Mice*, in which she played a character lead. A number of committee experiences gave her the necessary points to become a member of both Cap and Dagger and Theta Alpha Phi, national dramatics honorary. A senior, Mary Lou is president of the latter organization, was assistant director of *Winterset*, and co-director of one-act *Riders to the Sea*. Tonight's play is built around the sleuthing of Mary Lou's "Miss Nellie."

BOB MOORE (Anderson) a junior, portrays the detective in this, his second appearance onstage at Otterbein. His first was in *John Loves Mary*. In high school at Middletown, Ohio, Bob, a speech major, played in *Ab*, *Wilderness*, *Antigone*, and *Out of the Frying Pan*. There he was a member of the National Thespian Society. Although one detective would seem to be enough to do the job, Bob finds himself constantly at odds with Miss Van Gorder, a self-styled amateur. And he puzzles over the increasing number of crimes and suspects throughout the play.

OUT IN FRONT



Front Row: Duane Hopkins, Bob Myers, Jim Wagner. Back Row: Jim Gibson, Wayne Burt, Ken Kohn.

SALLY HALL (Lizzie) will make her first stage appearance at Otterbein although she has a backlog of experience in committee work. Sally is a junior from Westerville, Ohio attending Otterbein for a major in speech. She has assisted on properties, make-up, and costumes, and is a member of Cap and Dagger. Tonight in her character portrayal of the rattled maid, she livens the plot, and adds more confusion in the hunt for the Bat.

BOB LONG (Brooks) a sophomore from Columbus, Ohio will play the romantic lead. He has done some work in church plays, and in making his first appearance on the Otterbein stage, he will portray the gardener in tonight's production.

NITA SHANNON, (Miss Dale Ogden) a sophomore has been seen before at Cowan Hall in *The Miser*, *Two Blind Mice*, and *Craig's Wife*, in which she played the lead. In high school at Dayton, Ohio, Nita had roles in four three-act plays and student-directed her high school's annual "Follies." Her role tonight is that of Miss Van Gorder's niece.

DUANE HOPKINS (Doctor Wells) is a freshman from Canton, Ohio with parts in *Riders to the Sea* and *Winterset* in his log of college stage experience. "*The Doctor*" figures very highly in the story told on the stage tonight.

WAYNE BURT (Richard Fleming) becomes the most unfortunate character in the evening's activities. Wayne, from Pleasantville, Pennsylvania, is a newcomer to the Cowan stage, although he acted in high school productions.

JIM GIBSON (Reginald Beresford) of Marysville, Ohio, has done work backstage on various productions at Otterbein, but this is his first speaking part. However, he was active in dramatics onstage as well as backstage in high school.

BOB MYERS (Billy) portrays a Japanese butler, light-footed and shifty-eyed. Bob is a junior from Greentown, Ohio, and has had parts in *Wedding Spells*, *Nothing But the Truth*, and the lead role in his high school operetta, *Hollywood Bound*.

JIM WAGNER (The Unknown) baffles the cast in this, his first Otterbein stage appearance. At present he is from Ft. Myers, Florida. Jim has a backlog of high school experience, and is this year a freshman.

KEN KOHN (Man) haunts Cedarcrest in *The Bat*, having previously been seen in college in one-act *Minor Miracle*, and *The Miser*. Ken, from Massilon, Ohio, is also working as business manager for this production.

CAST OF CHARACTERS IN ORDER OF APPEARANCE

LIZZIE ALLEN	Sally Hall
MISS CORNELIA VAN GORDER	Mary Lou Poorman
BILLY	Bob Myers
BROOKS	Bob Long
MISS DALE OGDEN	Nita Shannon
DOCTOR WELLS	Duane Hopkins
ANDERSON	Bob Moore
RICHARD FLEMING	Wayne Burt
REGINALD BERESFORD	Jim Gibson
THE UNKNOWN MAN	Jim Wagner
MAN	Ken Kohn

CAP & DAGGER MEMBERS

Lloyd Lewis, President*
Bob Dunham, Vice President*
Evie Stump, Secretary*
Ken Kohn, Treasurer

Sally Bodge*

Nancy Carter

Sally Hall

Helen Herwick

Deloros Koons

Bill Lehman

Dorothy Miles

Mary Lou Poorman*

Nita Shannon

Joe Shumway

Don Skelton

Mary Ann Ross

Prof. Marion Chase

Prof. James Grissinger

Mr. "Tink" Sanders

Dr. E.W.E. Shear

*Member of Theta Alpha Phi, National Dramatic Fraternity

Compliments of
Arn & Roush Hardware

Grads of '47 and '48
SPORTING GOODS, GIFTS
& GENERAL HARDWARE

ISALY'S

Ice Cream and Dairy Products
Make Isaly's Your Stop
For Snacks After
Every Show
ISALY'S ICE CREAM
Ends The Quest
For The Best

Cellar Lumber Company

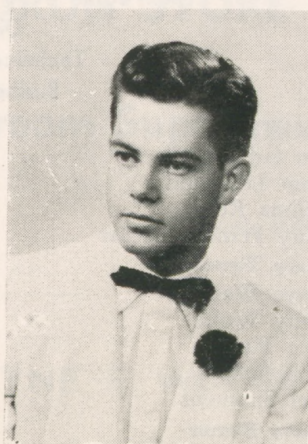
Honest, Courteous Service
Builds Our Business
Phone 2-2323
134 E. College Ave.

Talbot's Flowers

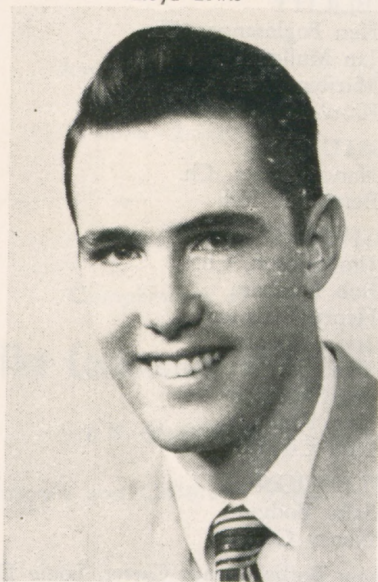
Phone 2-4151
260 S. State St.

BEHIND THE SCENES

LLOYD LEWIS—It isn't often that a college junior has had the terrific background in the theatre that student director Lloyd Lewis can claim. In high school at Mansfield, Ohio Lloyd played in *Best Foot Forward* and various one-act plays. He also had the good fortune to work with the Mansfield Community Players in a total of five major productions, including *Laura* and *Two Blind Mice*. He was seen twice in the latter, the second time at Otterbein in a different role. Of the seven plays of his college experience he has had leads in *The Winslow Boy*, *The Medium* and this year's homecoming play, *Winterset*. *Charley's Aunt*, at Ohio State University, found him again in the lead role. The current president of Cap and Dagger, Lloyd has had directing experience in the production of *Lo, the Star*, one of last year's freshman one-act plays. Lloyd has proved to be an able director in the difficult staging of tonight's play.



Lloyd Lewis



Bob Dunham

BOB DUNHAM—The "right-hand man" to the director has been staging shows ably since he transferred to Otterbein. He was responsible for much of the staging of *The Miser* in both the English and French productions, of *Two Blind Mice*, and of the freshman one-act plays for two years. Bob designed the set for last year's May Day play, *Craig's Wife*. This will be his second post as technical director this year—the first was for the fall homecoming play, *Winterset*. It is not unusual for one so interested in staging not to be seen often out in front, but Bob played the lead role in Columbus South High School's presentation of *Life with Father*. He will soon be seen in *The Student Prince* in a solo role. Bob has proved to directors that his ability and knowledge of stage technique are indispensable.

Compliments of

WESTERVILLE CREAMERY

DAIRY PRODUCTS

Westerville, Ohio

BEHIND THE SCENES

The People Who Have Made This Production Possible

Director, **LLOYD LEWIS**

Technical Director, **BOB DUNHAM**

Business Manager, **KEN KOHN**

TICKETS

Jim Gibson, Ch.
Anne Leismann
Wilma Reed
Mary Frances Tucker

Larry Tirnauer

Dave Warner
Betty Wolfe
Dot Purkey
Bob Fulton
Del Simmons

Barry Birner

PUBLICITY

Ken Foglesanger, Ch.
Jan Mullenix
Marilyn Hert
Karol Knobloch

COSTUMES

Nancy Carter, Ch.
Bernadine Hill

LIGHTING

Jim Gibson, Ch.
Bob Dunham
Henry Bielstien
Irving Bence
Tink Sanders
Joe Shumway
Ken Kohn
Paul Ciampa

RECEPTION

Sally Bodge
Nancy Carter

PROGRAMS

Dotty Miles, Ch.
Bill Lehman
Wally Conard
Nita Shannon
Ann Yost

STAGING

Stage Craft Class*
Joe Shumway

MAKE-UP

Dee Koons, Ch.
Del Simmons
Sarah Rose
Helen Herwick
June Althoff
Debbie Stump
Ford Swigart
Doris Stibbs
Diane Renollet

HOUSE MANAGER

Don Skelton

PROPERTIES

Helen Herwick, Ch.
Gloria Howard
Joy Anglin
Shirley Smith
Pat Noble

PHOTOGRAPHER

Jack White

SOUND EFFECTS

Bob Fulton

*John Bullis, Nancy Carter, Louie Drierer, Ken Echard, Lill Gullett, Bernie Hill, Bud Hill, Harry Howett, Carlos Marrero, Roy Schultz, Nita Shannon, Shirley Smith, Eleanor Tomb, Bobbie Tompkins, Ralph Wileman, Bev Young.

PATTERSON DRUG STORE

Phone 2-2392

23 N. State St.

Compliments of the

MORELAND FUNERAL HOME

BRINKMAN'S REXALL DRUG STORE

Prescriptions — Sickroom Supplies

2 South State St.

Phone 2-2148

W. C. Bates **Variety Store**

N. State St., Westerville, Ohio

WAYNE E. WOLFE

THE Real Estate Man

2 1/2 N. STATE ST.

Phone - 2-2123

Laurette's

The Place to Shop for Your

Easter Finery

Dresses, Suits, Accessories

18 N. State

Phone 2-2312

Compliments of

The Community Shop

6 N. State St.

Infant's and Children's Wear

BROWN'S MARKET

Home of Top Quality Meats

& Groceries

Free Delivery

FR. 2-4124

The Music Box

RECORDS — TELEVISION — RADIO

G. E. APPLIANCES

Westerville

46 N. State St.

FR. 2-4186

Worthington

667 High St.

FR. 2-6266

OUR NEXT PRODUCTION — MAY DAY

CAP AND DAGGER

in Cooperation with the Music Department
presents

"Student Prince"

DON'T MISS IT!

Compliments of

THE BOWLING ALLEY

and

The Snack Bar

The Best in Flowers From

MAPLE LEE FLOWERS

14 S. State St.

615 High St.

and

Westerville

Worthington

We would like to express our thanks to Mc Vay Furniture Co, for the furniture used in the play.

We would like to thank our advertisers and those who have made tonight's production possible. We sincerely hope you find this evening's performance enjoyable.

Cap and Dagger Dramatics Society

McHARR PRESS

Quality Printing

22 W. Main St
WESTERVILLE, OHIO

GREEN'S STUDIO

ROBERT DAUGHERTY — '40

"Our 41st Year Serving
Otterbein Students"

E. J. Norris & Son

THE CITIZENS BANK

WESTERVILLE, OHIO

Member Federal Deposit Insurance Corp.

HALLMARK

GREETING CARDS

A Card for Every Occasion

UNIVERSITY BOOK STORE

Robert Vaughn

Phone 2-2233

Westerville Cleaners

CLEANING and PRESSING

Repairing

Laundry Service

16 West College Ave.

HOME SUPPLY

"Your Complete Appliance and
Decorating Headquarters"

15 N. STATE STREET
WESTERVILLE, OHIO

FR. 2-3334

Floor Coverings — Rental Equipment

"It Pays To Look Well"

CROSE BARBER SHOP

Corner of State & Main



Front Cover Design

RALPH WILEMAN

