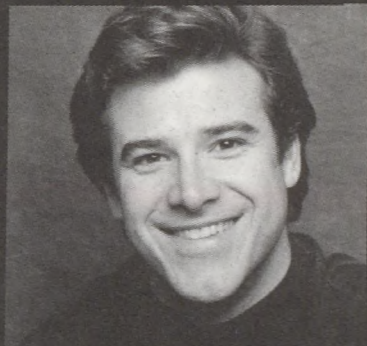
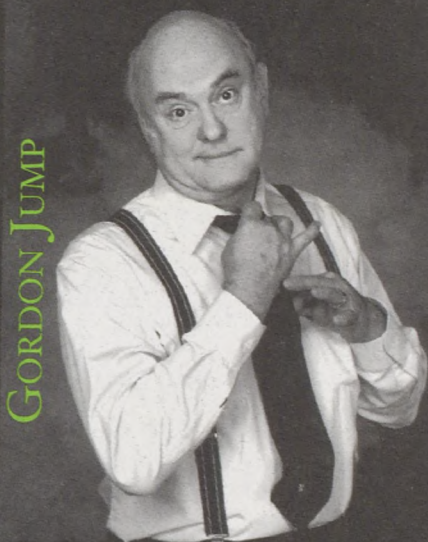


season '97

OTTERBEIN  
SUMMER  
THEATRE



TIM GREGORY



GORDON JUMP



KATHERINE SMART

Sponsored by Oakland Nursery

A GRIPPING TALE OF SEDUCTION AND INTRIGUE!

FEATURING TIM GREGORY AS "VALMONT" AND SUSAN DIOL!

## LES LIAISONS DANGEREUSES

(DANGEROUS LIAISONS) June 26 - July 13

*by Christopher Hampton*

*from the novel by Choderlos de Laclos*

directed by Dennis Romer

Set in France among aristocrats before the Revolution, this is nevertheless a play for all time about sexual manners and manipulation, ending in tragedy. Christopher Hampton has successfully converted the dramatic potential of the novel into a gripping stage play. "An evening of high comedy, high drama, and surprising passion..." - The New York Post.

---

A MUSICAL FARCE, FEATURING ED VAUGHAN & KATHERINE SMART!

## ONCE UPON A MATTRESS

*Music by Mary Rodgers*

July 17 - August 3

*Lyrics by Marshall Barer*

*Book by Jay Thompson, Dean Fuller, and Marshall Barer*

directed by Pam Hill

If you thought you knew the story of "The Princess and The Pea," you may be in for a walloping surprise! Carried on a wave of wonderful songs, by turns hilarious and raucous, romantic and melodic, this rollicking spin on the familiar classic of royal courtship and comeuppance provides for some side splitting shenanigans!

---

A WHODUNNIT

WITH EQUITY ACTORS GORDON JUMP & ED VAUGHAN!

## TEN LITTLE INDIANS

*by Agatha Christie*

August 7 - 17

directed by John Stefano

The superlative mystery comedy, top-notch, fantastic, enjoyable nonsense. Ten Little Indians refers to statuettes on the mantelpiece of a strange country house on an island off the coast of Devon, and to the nursery rhyme embossed above them, telling how each little Indian met his death - until there were none. The excitement never lets up until the final curtain.



## Summer Gala: Post-show event!

Be our guest at the **College President's home** following our July 20 matinee performance. This charming buffet will include great food and atmosphere complete with guest artists of our Summer season. What a perfect way to *celebrate Summer in style*, and meet our guest actors Ed Vaughan, Katherine Smart (*Charity* in OCT's 1995 "Sweet Charity") and Gordon Jump ("WKRP in Cincinnati" and the current "Maytag Man.") *An invitation for two to this fine affair after the show is yours with an added \$150 in patron support to your subscription order.* All proceeds benefit the future of Summer Theatre at Otterbein.

### SELECT 3 GREAT DISCOUNTED SHOWS

Tickets will be mailed the 2nd and 3rd weeks of June. →

#### Patron Fund Campaign

Otterbein Summer Theatre has been a consistent presence in the cultural life of Central Ohio. In order to ensure its continued success, we are announcing this year's fund drive with the following categories. Donors will be listed in the season program.

*Producer.....	\$150 or more*
Director.....	\$100 to \$149
Star.....	\$50 to \$99
Featured Player.....	\$10 to \$49

*\*Includes an invitation for two to the Summer Gala, RSVP required*

Theatre patrons including a donation in their ticket order and/or received by us before the summer program is printed will appear as a sponsor of our season. *Otterbein Summer Theatre would not exist without the generous support of families, businesses, and individuals who have annually contributed with gifts and services throughout our history.* Contributions are tax deductible. Thank you in advance for your support of us and the arts in our community.

# 1997 Summer Theatre Order Form

**\*SERIES A - INCLUDES OPENING NIGHT RECEPTIONS, meet the cast and share the excitement of opening night with the entire Theatre!**

**\*\*PLEASE CIRCLE YOUR PREFERRED DATES\*\***

Series	Day	Time	Les Liaisons**	Mattress**	Indians**	Price
A*	(Thursday) Opening Nights	7:30	6/26/97	7/17/97	8/7/97	\$43.00
B	Saturdays	8:00	6/28 or 7/5 or 7/12	7/19 or 7/26 or 8/2	8/9 or 8/16	\$43.00
C	Fridays	8:00	6/27 or 7/11	7/18 or 7/25 or 8/1	8/8 or 8/15	\$40.00
D	Thursdays	8:00	7/3 or 7/10	7/24 or 7/31	8/14/97	\$40.00
E	Wednesdays	8:00	7/2/97	7/23/97	8/13/97	\$38.00
F	Sundays	2:00	6/29 or 7/6 or 7/13	7/20 or 7/27 or 8/3	8/10 or 8/17 or 8/17 @ 7:30 p.m.	\$38.00

I wish to order \_\_\_\_\_ Series \_\_\_\_\_ season tickets at \_\_\_\_\_ = \$ \_\_\_\_\_

I wish to become a Summer Theatre Contributor = \$ \_\_\_\_\_

Postage/Handling fee = \$ 1.50

**Total Enclosed** = \$ \_\_\_\_\_

Make check payable to Otterbein Summer Theatre or charge to :

Mastercard# \_\_\_\_\_

Visa# \_\_\_\_\_

Discover# \_\_\_\_\_

Exp. Date \_\_\_\_\_

Name: \_\_\_\_\_

Signature (for charge card) \_\_\_\_\_

Address: \_\_\_\_\_

\_\_\_\_\_ City \_\_\_\_\_ ST \_\_\_\_\_ Zip

Phone (home & work) ( ) \_\_\_\_\_ ( ) \_\_\_\_\_

I am a new subscriber

I was a subscriber last summer

All sales are final - ticket requests will be filled in the order that they arrive at the box office. Your tickets will be mailed to you the second and third weeks of June.

Please clip and mail to:

**Otterbein Summer Theatre, 30 S. Grove St.  
Westerville, OH 43081**



## Oakland Nursery - Season Sponsor

We are delighted to announce our season sponsor as Oakland Nursery again this year. The entire company, artistic and management staff of Otterbein Summer Theatre wish to extend a warm **THANK YOU** to Paul Reiner and Oakland Nursery. Their generous support allows us to present an exciting season complete with major guest artists and professional technicians. We must seek support from individuals and businesses (as any theatre) to sustain our traditional quality. By supporting Oakland Nursery and other contributing businesses you are also helping Otterbein Summer Theatre.

## Summer Theatre Box Office: 823-1109

All 1997 Summer productions will take place in the Campus Center Theatre at 100 W. Home St. in Westerville. The box office is located in the lower level of the Campus Center in the outer lobby of the Theatre. **Regular Summer box office hours are 12:30 to 8:00 p.m. Mon. - Sat. and 12:30 to 2:00 p.m. on Sunday. These hours begin Monday, June 16 (Closed June 30, July 4, 21 and 28, August 11 and 12).** For information prior to the 16th please call (614) 823-1209 or (614) 823-1657. **Regular ticket prices are \$14 for Sunday matinees and Wednesday performances; \$15 for Thursday and Friday nights; and \$16 for Saturday and *opening nights* (1st Thursdays).** Group rates are available.

## Subscriber Benefits

- Discounted tickets to Central Ohio's oldest summer theatre — best theatre value in Central Ohio.
- Three fantastic shows featuring guest Equity Artists
- Convenient ticket exchange
- *Bring-A-Friend* coupons
- Guaranteed seats
- No waiting in box office lines
- Lost ticket replacement
- Otterbein Theatre mailings such as, *STAGES!*



Department of Theatre and Dance  
One Otterbein College  
Westerville, Ohio 43081-2006

Non-Profit Organization  
U.S. Postage  
PAID  
Westerville, Ohio  
Permit No. 177

*Make it a special summer of laughs,  
intrigue, and mystery! Join us for all that  
our 31st season offers.*



*If you receive more than one copy of this brochure, please pass one along to a friend.*