

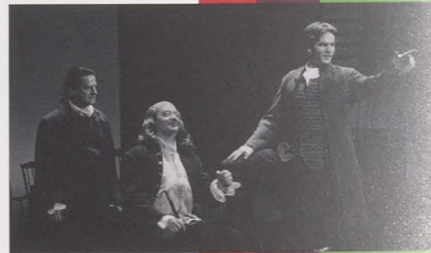
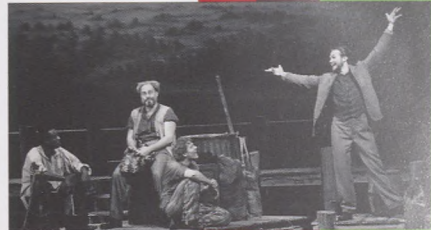
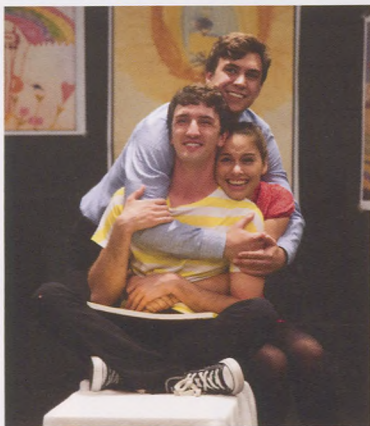
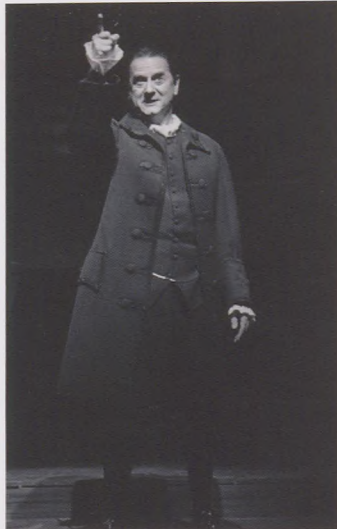


OTTERBEIN
UNIVERSITY

2015-2016
Season



Department of Theatre & Dance



Celebrating **23 years** of Otterbein Theatre
with **JOHN STEFANO**

Oy, what a season we have for you!

We open with **RENT**, the signature musical of the 1990s, and finish with **Fiddler on the Roof**, one of the finest musicals of all time. The dance concert this year, **Famously Yours...Forever**, will be entirely choreographed by the head of our dance program, Stella Kane. The spring play is Mark Twain's **Is He Dead?** the funniest cross-dressing comedy since *Charley's Aunt*, directed by our newest faculty member, Mark Mineart, and as an add-on, we'll do Shakespeare's best romantic comedy, **Much Ado About Nothing**. It is an exciting, up-beat season.

Both *Fiddler on the Roof* and *Rent* won Tony Awards for Best Musical in their respective years, 1964 and 1996. *Fiddler* was the first show in Broadway history to play more than 3,000 performances, and *Rent* surpassed it with 5,123 performances in a 12-year run. We haven't done *Rent* before and it's been 30 years since our last *Fiddler*, so it's definitely time to put these two shows on the boards.

And speaking of time, I will be retiring in August of next year, right after we close the 50th season of Otterbein Summer Theatre. I've been teaching since 1969, the last 23 at Otterbein as chair of the Department of Theatre and Dance. I am incredibly grateful to have had the chance to work here, with wonderful students, outstanding colleagues, and the most supportive audience anyone could ask for.

There is a song in *Rent* called "Seasons of Love" and it asks the question, "Five hundred twenty five thousand six hundred minutes/How do you measure, measure a year?" Jonathon Larson answers it in one phrase, "Remember the love." I do, and can only add, in gratitude and love to you all, that most memorable phrase from *Fiddler on the Roof*,

"L'chaim, To Life!"

John Stefano / Chair, Department of Theatre & Dance

Be a Subscriber! 2015-2016 Subscription Package



FAMOUSLY
YOURS...

FOREVER



Subscriber Benefits

"Same Seats" Policy

As a subscriber, you have the unique opportunity of renewing your subscription prior to the opening of sales to the public. Should you choose to remain in the same series (A-G) year after year, you will be able to keep the same seats. You will also have the opportunity to request upgrades of seating in advance of individual ticket sales.

Free Ticket Exchanges

The right to exchange tickets is a benefit offered exclusively to Otterbein University Theatre season ticket holders. Tickets may be exchanged to another performance of the same production. To complete an exchange, tickets must be returned 24 hours in advance of the date indicated on them.

Additional Savings

Choosing to purchase season tickets already saves you more than five percent off the individual ticket price, but you save on additional tickets purchased throughout the year. Simply tell the box office when ordering that you are a subscriber, and receive any additional tickets at a \$2.00 discount off the regular price.



RENT

September 24-27,
October 1-3, 2015

Fritsche Theatre at Cowan Hall
30 S. Grove St., Westerville

Book, Music & Lyrics by **Jonathan Larson**

Musical Arrangements
Steve Skinner

Original Concept/Additional Lyrics
Billy Aronson

Music Supervision and
Additional Arrangements
Tim Well

Dramaturg
Lynn Thomson

RENT was originally produced in New York by New York Theatre Workshop and on Broadway by Jeffrey Seller, Kevin McCollum, Allan S. Gordon and New York Theatre Workshop

Directed by **Melissa Lusher**
Musical Direction by **Lori Kay Harvey**
Choreography by **Natasha Natraj**

Co-Produced with the
Department of Music

Based on Puccini's beloved opera *La Bohème*, *RENT* follows the ups and downs of a year in the life of a group of impoverished, artistic friends living in Manhattan's East Village. The group's dreams, losses and love stories weave through the musical's narration to paint a stunningly raw and emotional portrait of the gritty bohemian world of New York City in the late 1980s, under the shadow of HIV/AIDS. Winner of the Tony Award for Best Musical and the Pulitzer Prize for Drama, *RENT* has become a pop cultural phenomenon with songs that rock and a story that resonates with audiences of all ages.

Advisory: *This production is recommended for mature audiences due to adult language and themes*

RENT

Is presented through special arrangement with Music Theatre International (MTI).

All authorized performance materials are also supplied by MTI.

421 W. 54th St., New York, NY 10019

Phone: 212-541-4684 Fax: 212-397-4684

www.MTIShows.com

FAMOUSLY
YOURS...

FOREVER



Dance 2015: Famously Yours... Forever

November 19-22, 2015

Fritsche Theatre at Cowan Hall
30 S. Grove St., Westerville

Choreography and Artistic Direction by **Stella Hiatt Kane**

The Dance Concert will be a performance solely choreographed by Stella Hiatt Kane during her spring 2015 sabbatical, a one-act dance theatre piece based on Gottfried Helnwein's painting "Boulevard of Broken Dreams," an American pop reinterpretation of Edward Hopper's "Nighthawks." The painting depicts Marilyn Monroe, Elvis Presley, James Dean and Humphrey Bogart seated in the same lonely late-night diner portrayed in Hopper's painting, but instead of unnamed individuals, these are American pop icons gathered in the most unlikely of settings: an ordinary and minimalistic diner. They are the "animals" forever behind the glass, unable to escape their iconic personas. Their energy and immortality linger like an essence that will not fade and conjure memories of brilliance that created these "gods" of American pop culture. This iconic club can only watch and remain famously yours...forever.



Is He Dead?

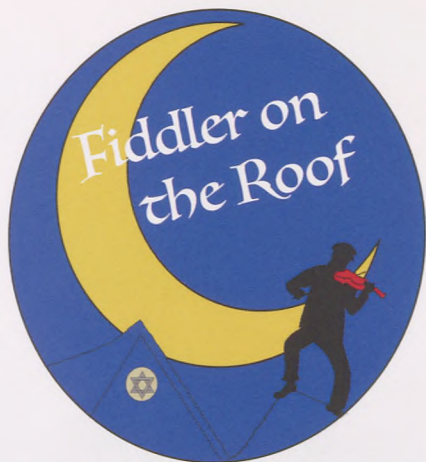
February 18-21 & 25-27, 2016

Fritsche Theatre at Cowan Hall
30 S. Grove St., Westerville

Adapted by **David Ives** / Based on a play by **Mark Twain**

Directed by **Mark Mineart**

The most hilarious circumstance of cross-dressing since *Charley's Aunt*, *Is He Dead?* comes to the Otterbein stage after a 2007 Broadway run which featured Norbert Leo Butz and Otterbein graduate Jeremy Bobb. Jean-François Millet, a young painter of genius, is ready to tie the knot, but is in debt to a villainous picture-dealer. In fear of the horrors of debtors' prison, Millet realizes that the only way he can pay his debts and marry his girl is to die, as it is only dead painters who achieve fame and fortune. But complications arise when, upon "death" and fortune, he must find a way to be resurrected to marry his true love!



Fiddler on the Roof

April 7-10,
April 14-16, 2016

Fritsche Theatre at Cowan Hall
30 S. Grove St., Westerville

Based on Sholem Aleichem stories by special permission of **Arnold Perl**

Book by
Joseph Stein

Music by
Jerry Bock

Lyrics by
Sheldon Harnick

Produced on the New York Stage by **Harold Prince**

Original New York Stage Production Directed and Choreographed
by **Jerome Robbins**

Directed by **Lenny Leibowitz**
Musical Direction by **Lori Kay Harvey**

Choreographed by **Stella Kane**
Co-Produced with the Department of Music

John Stefano, chair of the Otterbein University Department of Theatre and Dance, will take the stage in the lead role of Tevye in the final production of the 2015-16 season. Winner of nine Tony Awards when it debuted in 1964, *Fiddler On The Roof* has been touching audiences worldwide with its humor, warmth and honesty and has become a staple of the musical theatre canon. Set in the little village of Anatevka, the story centers on Tevye, a poor dairyman, and his five daughters. With the help of a colorful and tight-knit Jewish community, Tevye tries to protect his daughters and instill them with traditional values in the face of changing social mores and the growing anti-Semitism of Czarist Russia. Rich in historical and ethnic detail, *Fiddler On The Roof's* universal theme of tradition cuts across barriers of race, class, nationality and religion, leaving audiences crying tears of laughter, sadness and joy.

FIDDLER ON THE ROOF

Is presented through special arrangement with Music Theatre International (MTI).

All authorized performance materials are also supplied by MTI.

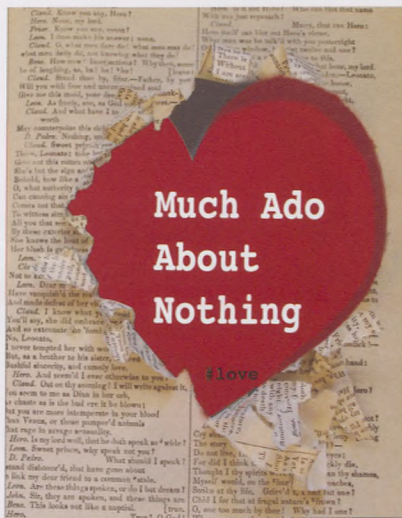
421 W. 54th St., New York, NY 10019

Phone: 212-541-4684 Fax: 212-397-4684

www.MTIShows.com

Join Us for More Otterbein University Theatre!

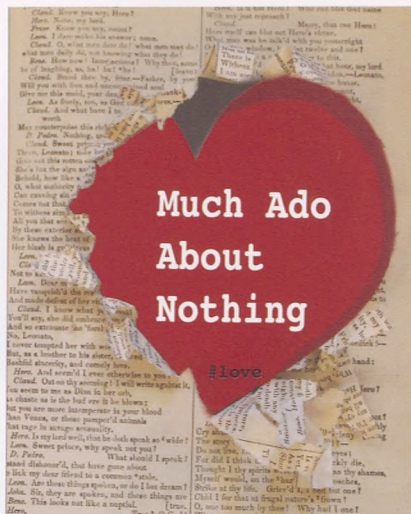
Please call the Box Office (614.823.1109) for more information.



THE LAUNCH



A Senior Cabaret



Much Ado About Nothing

Much Ado About Nothing

October 22-24,
October 30 & 31, 2015

Campus Center Theatre
100 W. Home St., Westerville

By William Shakespeare

Directed by Christina Kirk

Claudio loves Hero and Hero loves Claudio and nothing seems capable of keeping them apart. Claudio's friend Benedick loves Beatrice and Beatrice loves Benedick, but (because neither will admit it) nothing seems capable of bringing them together. Driven along by a romance all the more charming for being in denial, *Much Ado About Nothing* is a miracle of comic and dramatic suspense and gives us, in the bantering Beatrice and Benedick, one of Shakespeare's wittiest, most lovable pair of lovers.

**Add to your subscription
package for \$15**



The Launch: A Senior Cabaret

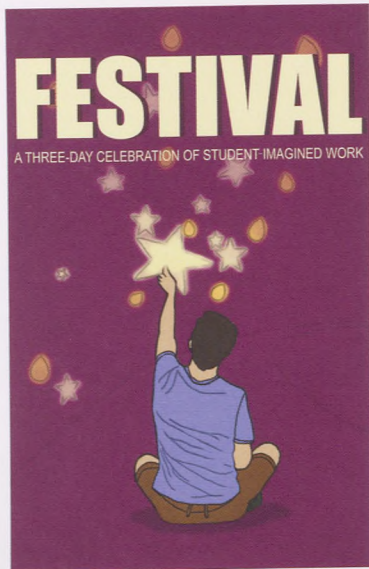
Sunday, December 6, 2 p.m.

Fritsche Theatre at Cowan Hall
30 S. Grove St., Westerville

The annual Senior Showcase fundraiser has a new look! Join us for the inaugural launch of the senior performance class as they say goodbye to Otterbein and hello to their new careers. You'll be entertained by the favorite songs, dance, scenes and monologues of the Class of 2015. And, for a special treat, the students will be joined on stage by some of our very successful alumni. It will truly be an evening of celebration and joy, the perfect opportunity for you to see these rising stars one last time before they are "launched" into the professional world of show business.

All proceeds, including donations beyond the admission fee, will benefit the Senior Showcase. For more information and to purchase tickets, contact the Box Office.

Admission: \$25



Festival

January 28-30, 2016

Campus Center Theatre
100 W. Home St., Westerville

Festival is a three-day celebration of student-imagined work produced, directed, designed and acted by the majors in the Department of Theatre and Dance. *Festival* works may include plays, musicals, mime, monologues, songs and dance. The possibilities are endless!

Please note, these productions may contain adult language and themes. Not all material may be suitable for children.

Free Admission!

Contacting the Box Office

Tickets may be purchased for all shows during regular Box Office hours at any time during the year. Due to the nature of the college calendar, please note dates of operation below.

Monday–Friday, 12 – 4 p.m. (and one hour prior to performances)

Fall Semester: August 31–December 5 (Closed October 12–13, November 25–27)

Spring Semester: January 19 – April 15 (Closed February 29–March 4, March 25)

BOX OFFICE:

614.823.1109

Cowan Hall, 30 S. Grove St.
Westerville, OH 43081

Buy online!

www.otterbein.edu/drama

After August 31

Individual Ticket Prices:

RENT, The Launch and *Fiddler on the Roof*: \$25 each

Much Ado About Nothing, Famously Yours...Forever
and *Is He Dead?*: \$18 each

Festival: FREE

Student Rush Tickets:

Tickets are available for all performances one hour prior to curtain (pending availability). Please phone the Box Office for Student Rush pricing.

Join the Cast!

Costs of equipment and materials continue to rise. It is because of your assistance with these expenses and more that we are able to provide our students with the experiences of working with world-renowned directors, designers, and choreographers.

Again this year, Otterbein College Theatre will spend \$25,000 in costumes, \$40,000 in scenery, and over \$29,000 in scripts and royalties. This does not include sound, light, ticket, publicity and guest expenses. We appreciate your many contributions and your continued presence in our theatres. Please, join the Cast by contributing to the 2015-16 Otterbein University Theatre season.

The Cast List

\$5000+.....	Producer	\$100–249...Star
\$1000–4999....	Director	\$50–99.....Supporting
\$500–999.....	Designer	Actor
\$250–499.....	Diva	\$10–49.....Extra

Show Times

Opening Nights 7:30 p.m.

Sunday Matinees 2 p.m.

All other performances 8 p.m.

Traditional Season

SUBSCRIPTION PERFORMANCE SCHEDULE

Series	Day	Time	<i>RENT</i>	<i>Dance 2015: Famously Yours...Forever</i>	<i>Is He Dead?</i>	<i>Fiddler on the Roof</i>
A	Opening Nights (Thursday)	7:30	September 24	November 19	February 18	April 7
B	1 st Fridays	8:00	September 25	November 20	February 19	April 8
C	1 st Saturdays	8:00	September 26	November 21	February 20	April 9
D	Sunday Matinees	2:00	September 27	November 22	February 21	April 10
E	2 nd Thursdays	8:00	October 1	November 19 (7:30)	February 25	April 14
F	2 nd Fridays	8:00	October 2	November 20	February 26	April 15
G	2 nd Saturdays	8:00	October 3	November 21	February 27	April 16

**Add Much Ado About Nothing for just
\$15 more!** (You choose your preferred date)

Thursday, October 22, 7:30 p.m.
Friday, October 23, 8 p.m.
Saturday, October 24, 8 p.m.

Friday, October 30, 8 p.m.
Saturday, October 31, 8 p.m.

Subscription Order Form

Please send this form, with payment, to:

Otterbein University Theatre Box Office
1 S. Grove St.
Westerville, Ohio 43081

Call the Box Office at 614.823.1109 with questions.

Send me season tickets!

Traditional Series _____ (#) _____ x \$82= \$ _____
(choose A-G)

AND ADD

Much Ado About Nothing _____ x \$15= \$ _____
(check preferred dates below) (when combined with a subscription package)

- ☐ Thursday, October 22 ☐ Friday, October 23 ☐ Saturday, October 24
☐ Friday, October 30 ☐ Saturday, October 31

Become an Otterbein University
Theatre Contributor and join the Cast! \$ _____

Postage & Handling \$ 4.00

(Individual tickets can be purchased by calling
the Box Office at 614.823.1109 or visiting
www.otterbein.edu/drama.)

TOTAL \$ _____

NAME

ADDRESS

CITY

STATE

ZIP

HOME PHONE

DAYTIME PHONE

E-MAIL

FOR OFFICE USE ONLY

DR

PD

SALE #

Make checks payable to: Otterbein University Theatre

Charge: ☐ MC ☐ Visa ☐ Discover

CARD #

EXP. DATE

CV3

SIGNATURE

Disclaimer: All sales are final. Ticket requests will be filled in the order they arrive at the Box Office. Your tickets will be mailed to you unless time does not allow prior to the first scheduled performance. Seating **WILL** vary for *Famously Yours...Forever* and *Much Ado About Nothing*. Subscription seats in Cowan Hall will be moved back two rows during most musicals in order to accommodate the orchestra.



Department of Theatre & Dance
1 South Grove Street
Westerville, OH 43081-2004

NON-PROFIT
ORGANIZATION
U.S. POSTAGE
PAID
WESTERVILLE, OH
PERMIT NO. 177

BOX OFFICE:

614.823.1109

www.otterbein.edu/drama

2015-2016 Season sponsored by:



*****AUTO**5-DIGIT 43086

007607 T19 P1

MS. LOIS FRANCIS SZUDY

95 W PLUM ST

WESTERVILLE OH 43081-2018



Ohio ENT
PEDIATRIC AND ADULT EAR, NOSE & THROAT

www.hearinghealthsolutions.com

www.ohioentdocs.com