

OTTERBEIN THEATRE & DANCE  
**CREATING THE FUTURE**



**2017-18 SEASON**



**OTTERBEIN**  
UNIVERSITY



## CREATING THE FUTURE

We celebrate artists creating the future. Our company of actors, managers, designers and technicians will go on to careers on Broadway, with major regional theatres, and with international and national tours. But for now, Otterbein is their Broadway and you are the first to witness their talent. Your passionate belief in these young artists is what spurs them on and inspires us to adventure into new and exciting theatrical realms.

This year's season explores the deceived, the deluded and the true at heart!

We begin with Neil Simon's *Rumors*, a hilarious farce that takes deception to its comic extremes as we witness every guest at the party clamoring to do anything but own up to what's really happening. From there, we dive into the darkly comic world of *Adding Machine*. In this brilliantly scored musical adaptation of Elmer Rice's play, the deluded Mr. Zero must fight for his humanity under the intense grip of a culture that no longer values his existence. Our Dance Concert, *Move Me*, is sure to be an exhilarating experience, calling upon the souls of former lives to stir up hidden longings and passions from the fragments of memory. We've also added a Classroom Project this fall, *Who's Afraid of Virginia Woolf?*, featuring faculty guest artists Mark Mineart and Melissa Lusher as George and Martha, a husband and wife who desperately fight to love and be loved. In the spring we offer *The Diary of Anne Frank*, a story of the power that comes from one young girl's belief "in spite of everything that people are really good at heart." To close our season, we offer the Tony award winning musical *Thoroughly Modern Millie*, an explosion of tap dancing exuberance and joy!

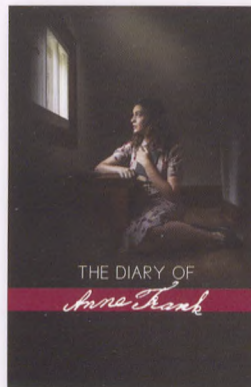
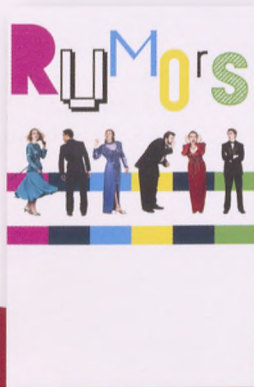
We are thrilled to introduce our newest faculty member, Thom Christopher Warren, who will direct *Thoroughly Modern Millie*. Thom has worked on and off Broadway, in many national touring companies and on the stages of some of the nation's leading regional theatres. A long-time cast member of Disney's *The Lion King*, Thom stood by in both the Broadway and first national companies, and served as resident director of the show's second national tour. We have no doubt that Thom's experience and expertise will certainly help us in creating a bright future for these talented young artists.

We invite to you join us in this delightful and dangerous journey through deception and delusion in search of something we hope you find to be true at heart.

**Christina Kirk / Chair, Department of Theatre & Dance**

**CALL OR CLICK FOR TICKETS**

# BE A PART OF THEIR FUTURE...SUBSCRIBE! 2017-18 SUBSCRIPTION PACKAGE



## SUBSCRIBER BENEFITS

### “Same Seats” Policy

As a subscriber, you have the unique opportunity of renewing your subscription prior to the opening of sales to the public. Should you choose to remain in the same series (A-G) year after year, you will be able to keep the same seats. You will also have the opportunity to request upgrades of seating in advance of individual ticket sales.

### Free Ticket Exchanges

The right to exchange tickets is a benefit offered exclusively to Otterbein Theatre & Dance season ticket holders. Tickets may be exchanged to another performance of the same production. To complete an exchange, tickets must be returned 24 hours in advance of the date indicated on them.

### Additional Savings

Choosing to purchase season tickets already saves you more than 5 percent off the individual ticket price, but you save on additional tickets purchased throughout the year. Simply tell the box office when ordering that you are a subscriber, and receive any additional tickets at a \$2 discount off the regular price.

# RUMORS



## RUMORS

By Neil Simon

**Sept. 21-24 and 28-30, 2017**

**Fritsche Theatre at Cowan Hall**  
30 S. Grove St., Westerville

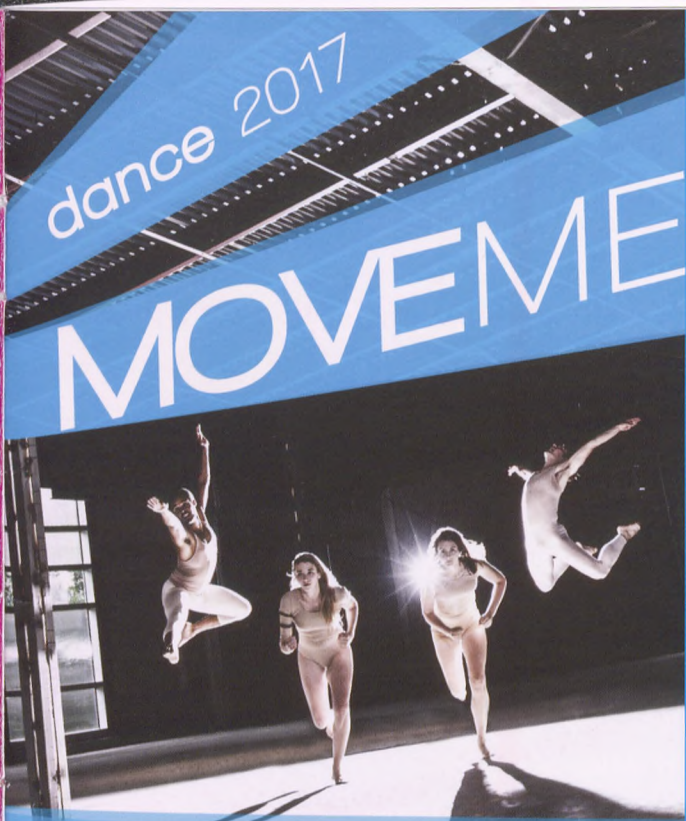
Directed by Melissa Lusher

Neil Simon's madcap, slamming door farce takes a routine 10th anniversary party in Myra and Charley's high-end neighborhood, adds quirky friends, missing persons, indistinct clues, gunshots, and botched cover-ups to make "the mundane – insane!"

*"Rumors" is presented by special arrangement with SAMUEL FRENCH, INC.*

This production is rated PG due to adult language.

CALL OR CLICK FOR TICKETS



dance 2017

# MOVEME

*dance 2017: MOVEME*  
**Nov. 16-19, 2017**

**Fritsche Theatre at Cowan Hall**  
30 S. Grove St., Westerville

Artistic Direction by Stella Hiatt Kane

Choreography by Scott Brown, Anna Elliott,  
Stella Hiatt Kane, and Christeen Stridsberg

A gathering of souls connected together through all of the emotions and experiences that make us human. Story after story... lifetime after lifetime. Move me physically, emotionally to the next place, time and time again, with a resonating and stirring recognition faint in the recesses of memory. The 2017 annual dance concert will feature choreography by Otterbein Theatre & Dance faculty.



THE DIARY OF  
*Anne Frank*

THE DIARY OF *Anne Frank*

A Play by Frances Goodrich and Albert Hackett  
Based upon *Anne Frank: The Diary of a Young Girl*  
Newly Adapted by Wendy Kesselman

**Feb. 15-18 and 22-24, 2018**

**Fritsche Theatre at Cowan Hall**  
30 S. Grove St., Westerville

Directed by Mark Mineart

*"Despite everything, I believe people are really good at heart."*  
- Anne Frank

A transcendently powerful new adaptation for a new generation, Anne's voice of hope shines through the claustrophobic realities of the fear and grief experienced while hiding from the Nazis. This brave young girl emerges from history a living, lyrical, intensely gifted writer, who confronts her rapidly changing life and the increasing horror of her time with astonishing honesty, wit and determination.

CALL OR CLICK FOR TICKETS

# THOROUGHLY MODERN

*millie*



6 1 4 . 8 2 3 . 1 1 0 9

## THOROUGHLY MODERN *millie*

Book by  
RICHARD MORRIS  
and DICK SCANLAN

New Music by  
JEANINE TESORI

New Lyrics by  
DICK SCANLAN

Original Story and Screenplay by RICHARD MORRIS for the Universal Pictures Film

**April 5-8 and 12-14, 2018**

**Fritsche Theatre at Cowan Hall  
30 S. Grove St., Westerville**

*Originally Produced for Broadway by*

Michael Leavitt Fox Theatricals Hal Luftig

Stewart F. Lane James L. Nederlander Independent Presenters Network  
L.Mages/M.Glick Berinstein/Manocherian/Dramatic Forces John York Noble  
and Whoopi Goldberg

Directed by Thom Christopher Warren  
Musical Direction by Lori Kay Harvey  
Choreography by Stella Hiatt Kane and Anna Elliott

Co-Produced with the  
Department of Music

We'll take you back to the height of the Jazz Age in New York City, when "moderns," including a flapper named Millie Dillmount, were bobbing their hair, raising their hemlines, entering the workforce and rewriting the rules of love. This high-spirited musical romp is a delightful valentine to the long-standing spirit of New York City and the people who seek to discover themselves there.

*THOROUGHLY MODERN MILLIE*

is presented through special arrangement with Music Theatre International (MTI).

All authorized performance materials are also supplied by MTI.

421 West 54th Street, New York, NY 10019

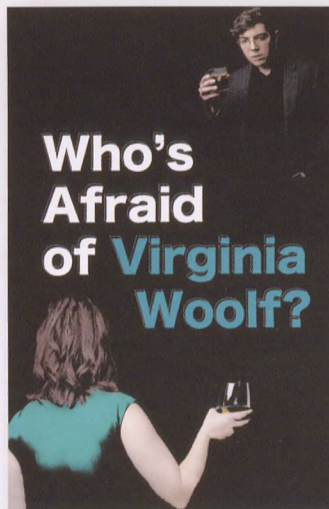
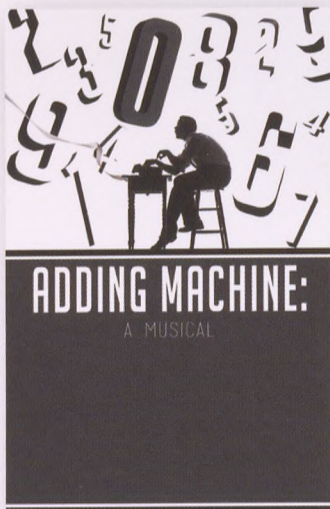
Phone: 212-541-4684 Fax: 212-397-4684

[www.MTIShows.com](http://www.MTIShows.com)

[WWW.OTTERBEIN.EDU/DRAMA](http://WWW.OTTERBEIN.EDU/DRAMA)

# JOIN US FOR MORE **OTTERBEIN THEATRE & DANCE**

*Please call the Box Office (614.823.1109) for more information.*



CALL OR CLICK FOR TICKETS



# Department of Theatre and Dance

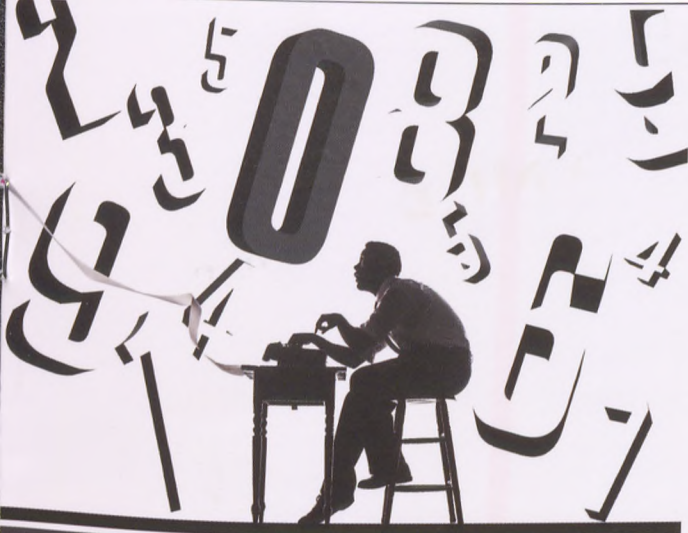
Faculty/Staff receive free tickets for themselves and their immediate family for all plays and the dance concert as well as Thursday/Sunday performances of the musicals!



Box Office Hours:  
Monday-Friday, 12:00-4:00pm  
614-823-1109

Reserving tickets for your class is easy!  
Email [aconrad@otterbein.edu](mailto:aconrad@otterbein.edu) with your class name, date, and number of students!

Admit One | Admit One | Admit One | Admit One



# ADDING MACHINE:

A MUSICAL

## ADDING MACHINE: A MUSICAL

Composed by Joshua Schmidt

Libretto by Jason Loewith and Joshua Schmidt

Based on the play *The Adding Machine* by Elmer Rice

**Oct. 19-21 and 27-28, 2017**

**Campus Center Theatre**

100 W. Home St., Westerville


Directed by Lenny Leibowitz

Musical Direction by Lori Kay Harvey

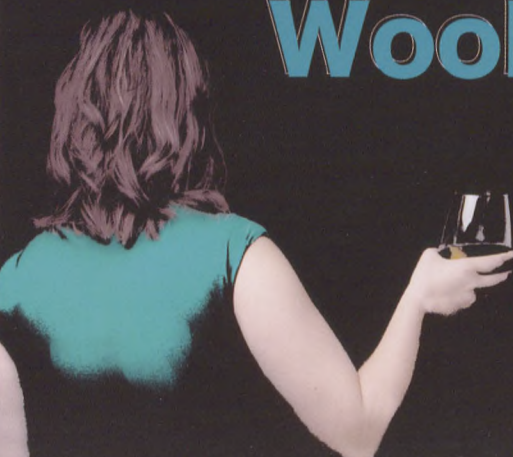
Co-produced by the Department of Music

In this darkly comic and heartbreakingly beautiful musical adaptation of Elmer Rice's incendiary 1923 play, Mr. Zero, after 25 years of service to his company, is replaced by a mechanical adding machine. An eclectic score gives passionate and memorable voice to this stylish and stylized show, which follows Zero in his journey to the afterlife in the Elysian Fields where he is met with one last chance for romance and redemption.

ADD TO YOUR SUBSCRIPTION PACKAGE  
for \$25



# Who's Afraid of Virginia Woolf?



Edward Albee's

## Who's Afraid of Virginia Woolf?

Nov. 30-Dec. 2, 2017

Campus Center Theatre

100 W. Home St., Westerville

Directed by Christina Kirk

Featuring Otterbein Faculty Melissa Lusher and Mark Mineart

Edward Albee's *Who's Afraid of Virginia Woolf?* is the story of George and Martha, two of the most famous roles ever written for the stage. Over the course of one wickedly hilarious evening, the cocktails come out and the gloves come off as this riveting duo takes their two young guests on the ride of their lives.

*The 2017-18 Classroom Project is presented as part of  
Melissa Lusher's sabbatical.*

**FREE ADMISSION**

# The Launch

*The Launch*: A SENIOR CABARET  
Sunday, Dec. 3, 2017 at 2 p.m.

Fritsche Theatre at Cowan Hall  
30 S. Grove St., Westerville

A fundraiser for the New York Senior Showcase, the program will include the favorite songs, dance, scenes and monologues of the Class of 2018. And, for a special treat, the students will be joined on stage by special alumnus guest, Sam Jaeger '99. It will be an afternoon of celebration and joy, the perfect opportunity for you to see these rising stars one last time before they are "launched" into the professional world of show business. All proceeds, including donations beyond the admission fee, will benefit the NY Senior Showcase.



Sam Jaeger '99  
*Parenthood*  
*American Sniper*  
*Inherent Vice*

ADMISSION  
\$30

614.823.1109

WWW.OTTERBEIN.EDU/DRAMA



*Please note, these productions may contain adult language and themes. Not all material may be suitable for children.*

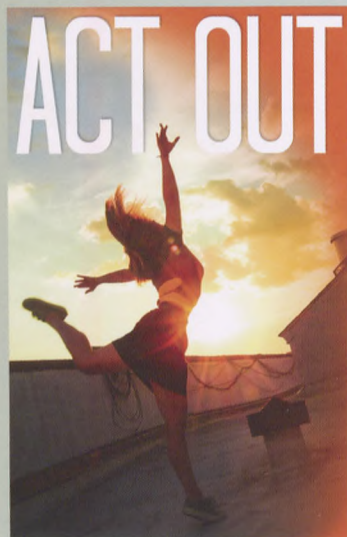
**FREE  
ADMISSION**

# FESTIVAL | Jan. 19 and 20, 2017

## Campus Center Theatre

100 W. Home St., Westerville

Join us for the sixth annual Festival, a two-day celebration of student-imagined work. Produced, directed, designed and acted by Otterbein University students from many departments, Festival works may include plays, musicals, mime, monologues, songs and dance. The possibilities are endless!



## ACT OUT: READING SERIES

In partnership with the Otterbein University Opening Doors to the World arts initiative, the student-directed Act Out Reading Series empowers student theatre artists to investigate dramatic material that explores different cultures, ethnicities, genders, sexualities, and other facets of identity.

### TAP THE LEOPARD

By Kia Corthron

Sept. 10 | 2 p.m. | Philomathean Room, Towers Hall

### TBA

Apr. 11 | 7:30 p.m. | Philomathean Room, Towers Hall

Please contact the Box Office for more information:  
614-823-1109 or [boxoffice@otterbein.edu](mailto:boxoffice@otterbein.edu).

## CONTACTING THE BOX OFFICE

Tickets may be purchased for all shows during regular box office hours at any time during the year. Please bear with us! We are a student-run box office, so dates of operation will change with the academic calendar. The box office is not open on University holidays or during scheduled breaks. Due to the nature of the college calendar, please note dates of operation:

**Fall Semester: Aug. 28 – Dec. 1 | Spring Semester: Jan. 15 – April 13**

### LOCATION:

Cowan Hall, 30 S. Grove St.  
Westerville, OH 43081

### HOURS:

Monday–Friday, 12-4 p.m.  
(and one hour prior to performances)

**WWW.OTTERBEIN.EDU/DRAMA | 614-823-1109**

**BUY ONLINE**, any time of the day, any day of the week!

### INDIVIDUAL TICKET PRICES:

*Adding Machine: A Musical* and *Thoroughly Modern Millie*: \$30

*Rumors*, *Dance 2017: Move Me*, and *The Diary of Anne Frank*: \$22

*The Launch*: \$30

*Who's Afraid of Virginia Woolf?*, *Festival* and *ACT OUT: Reading Series*: FREE

### STUDENT RUSH TICKETS:

Tickets are available for all performances one hour prior to curtain (pending availability). Please phone the box office for Student Rush pricing.

**SHOW TIMES:** Opening Nights 7:30 p.m.

Sunday Matinees 2 p.m.

All other performances 8 p.m.

## JOIN THE CAST!

Costs of equipment and materials continue to rise. It is because of your assistance with these expenses and more that we are able to provide our students with the experiences of working with world-renowned directors, designers and choreographers.

Again this year, Otterbein University Theatre will spend \$25,000 in costumes, \$40,000 in scenery, and over \$29,000 in scripts and royalties. This does not include sound, light, ticket, publicity and guest expenses. We appreciate your many contributions and your continued presence in our theatres. Please, join the Cast by contributing to the 2017-18 Otterbein University Theatre season.

### THE CAST LIST

\$5000+.....Producer

\$1000–4999.....Director

\$500–999.....Designer

\$250–499.....Diva

\$100–249.....Star

\$50–99.....Supporting Actor

\$10–49.....Extra

TRADITIONAL SEASON

# SUBSCRIPTION PERFORMANCE SCHEDULE

Series	Day	Time	<i>RUMORS</i>	<i>Dance 2017: MOVE ME</i>	<i>The Diary of Anne Frank</i>	<i>Thoroughly Modern Millie</i>
<b>A</b>	Opening Nights (Thursday)	7:30	Sept. 21	Nov. 16	Feb. 15	April 5
<b>B</b>	1 <sup>st</sup> Fridays	8:00	Sept. 22	Nov. 17	Feb. 16	April 6
<b>C</b>	1 <sup>st</sup> Saturdays	8:00	Sept. 23	Nov. 18	Feb. 17	April 7
<b>D</b>	Sunday Matinees	2:00	Sept. 24	Nov. 19	Feb. 18	April 8
<b>E</b>	2 <sup>nd</sup> Thursdays	8:00	Sept. 28	Nov. 16 (7:30 p.m.)	Feb. 22	April 12
<b>F</b>	2 <sup>nd</sup> Fridays	8:00	Sept. 29	Nov. 17	Feb. 23	April 13
<b>G</b>	2 <sup>nd</sup> Saturdays	8:00	Sept. 30	Nov. 18	Feb. 24	April 14

**Add Adding Machine: A Musical for  
just \$25 more!** (You choose your preferred dates)

Thursday, Oct. 19, 7:30 p.m.

Friday, Oct. 20, 8 p.m.

Saturday, Oct. 21, 8 p.m.

Friday, Oct. 27, 8 p.m.

Saturday, Oct. 28, 8 p.m.

# SUBSCRIPTION ORDER FORM

Please send this form, with payment, to:

**Otterbein University Theatre Box Office**  
1 S. Grove Street  
Westerville, Ohio 43081

Call the Box Office at 614.823.1109 with questions.

## Send me season tickets!

Traditional Series \_\_\_\_\_ (#) \_\_\_\_\_ x \$91 = \$ \_\_\_\_\_  
(choose A-G)

### AND ADD

**Adding Machine: A Musical** \_\_\_\_\_ x \$25 = \$ \_\_\_\_\_  
(check preferred dates below) (when combined with a subscription package)

- Thursday, Oct. 19    Friday, Oct. 20    Saturday, Oct. 21  
 Friday, Oct. 27    Saturday, Oct. 28

Become an Otterbein University  
Theatre Contributor and join the Cast! \$ \_\_\_\_\_

Postage & Handling \$ 4.00

(Individual tickets can be purchased by calling  
the Box Office at 614.823.1109 or visiting  
[www.otterbein.edu/drama](http://www.otterbein.edu/drama))

TOTAL \$ \_\_\_\_\_

NAME \_\_\_\_\_

ADDRESS \_\_\_\_\_

CITY \_\_\_\_\_

STATE \_\_\_\_\_

ZIP \_\_\_\_\_

HOME PHONE \_\_\_\_\_

DAYTIME PHONE \_\_\_\_\_

E-MAIL \_\_\_\_\_

FOR OFFICE USE ONLY

DR \_\_\_\_\_

PD \_\_\_\_\_

SALE # \_\_\_\_\_

**Make checks payable to: Otterbein University Theatre**

Charge:  MC    Visa    Discover

CARD # \_\_\_\_\_

EXP. DATE \_\_\_\_\_

CV3 \_\_\_\_\_

SIGNATURE \_\_\_\_\_

**Disclaimer:** All sales are final. Ticket requests will be filled in the order they arrive at the box office. Your tickets will be mailed to you unless time does not allow prior to the first scheduled performance. Seating **WILL** vary for *Adding Machine: A Musical* and *Dance 2017: Move Me*. Subscription seats in Cowan Hall will be moved back two rows during most musicals in order to accommodate the orchestra.





Department of Theatre & Dance  
1 South Grove Street  
Westerville, OH 43081-2004

NON-PROFIT  
ORGANIZATION  
U.S. POSTAGE  
PAID  
WESTERVILLE, OH  
PERMIT NO. 177

**BOX OFFICE:**

**614-823-1109**

**[www.otterbein.edu/drama](http://www.otterbein.edu/drama)**



2017-18 Season sponsored by:

**Ohio ENT**

PEDIATRIC AND ADULT EAR, NOSE & THROAT



**HEARING  
HEALTH  
SOLUTIONS**

*from Ohio ENT™*

**CALL  
US!**



[www.ohioentdocs.com](http://www.ohioentdocs.com)

[www.hearinghealthsolutions.com](http://www.hearinghealthsolutions.com)