

Otterbein University

## Digital Commons @ Otterbein

---

[Course Catalogs](#)

[Archives & Special Collections](#)

---

4-1934

### 1933-1934 Otterbein College Bulletin

Otterbein University

Follow this and additional works at: <https://digitalcommons.otterbein.edu/coursecatalogs>



Part of the [Curriculum and Instruction Commons](#), [Higher Education Commons](#), and the [Higher Education Administration Commons](#)

---

#### Recommended Citation

Otterbein University, "1933-1934 Otterbein College Bulletin" (1934). *Course Catalogs*. 10.  
<https://digitalcommons.otterbein.edu/coursecatalogs/10>

This Book is brought to you for free and open access by the Archives & Special Collections at Digital Commons @ Otterbein. It has been accepted for inclusion in Course Catalogs by an authorized administrator of Digital Commons @ Otterbein. For more information, please contact [digitalcommons07@otterbein.edu](mailto:digitalcommons07@otterbein.edu).



# OTTERBEIN COLLEGE BULLETIN

---

New Series

Volume XXX—No. 5

---

APRIL, 1934



CATALOG  
NUMBER

Published by the College—Issued  
Five Times a Year

---

Entered as Second Class Matter at Westerville, Ohio

---

Acceptance for Mailing at Special Rate Postage Provided for in Section  
1103, Act of October 3, 1917, Authorized July 26, 1918



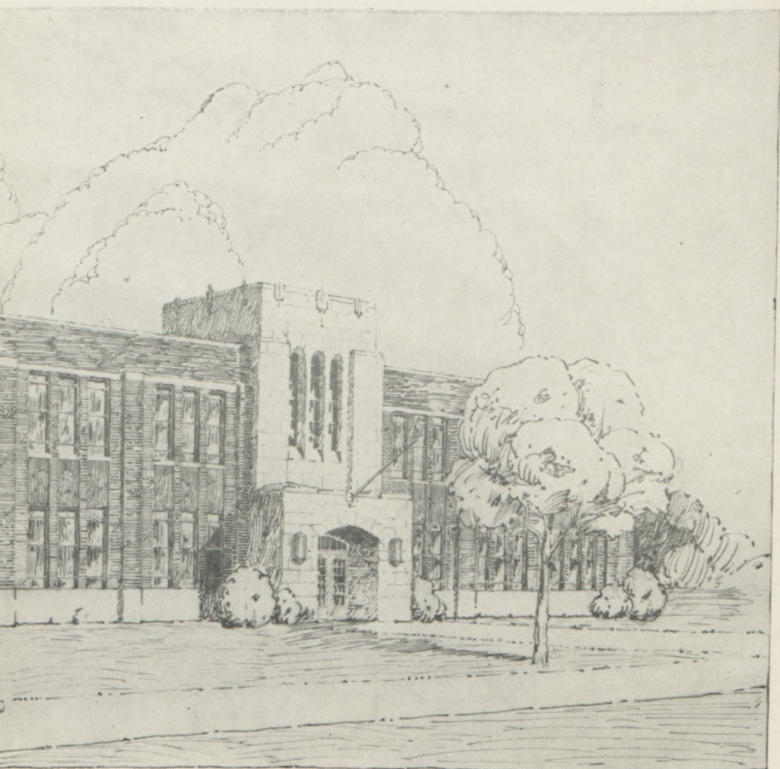






MEN'S GY





GYMNASIUM



THE EIGHTY-SIXTH  
ANNUAL CATALOG  
OF  
OTTERBEIN COLLEGE

*For the Year of 1933-34*  
*With Announcements for 1934-35*

WESTERVILLE, OHIO

*Published by the College*

1934



1934

## CALENDAR

1934

JANUARY							MAY							SEPTEMBER						
1	2	3	4	5	6			1	2	3	4	5		2	3	4	5	6	7	8
7	8	9	10	11	12	13	6	7	8	9	10	11	12	9	10	11	12	13	14	15
14	15	16	17	18	19	20	13	14	15	16	17	18	19	16	17	18	19	20	21	22
21	22	23	24	25	26	27	20	21	22	23	24	25	26	23	24	25	26	27	28	29
28	29	30	31				27	28	29	30	31			30						
FEBRUARY							JUNE							OCTOBER						
				1	2	3	3	4	5	6	7	8	9	7	1	2	3	4	5	6
4	5	6	7	8	9	10	10	11	12	13	14	15	16	14	15	16	17	18	19	20
11	12	13	14	15	16	17	17	18	19	20	21	22	23	21	22	23	24	25	26	27
18	19	20	21	22	23	24	24	25	26	27	28	29	30	28	29	30	31			
25	26	27	28																	
MARCH							JULY							NOVEMBER						
				1	2	3	1	2	3	4	5	6	7	4	5	6	7	8	9	10
4	5	6	7	8	9	10	8	9	10	11	12	13	14	11	12	13	14	15	16	17
11	12	13	14	15	16	17	15	16	17	18	19	20	21	18	19	20	21	22	23	24
18	19	20	21	22	23	24	22	23	24	25	26	27	28	18	19	20	21	22	23	24
25	26	27	28	29	30	31	29	30	31					25	26	27	28	29	30	
APRIL							AUGUST							DECEMBER						
1	2	3	4	5	6	7	5	6	7	8	9	10	11	2	3	4	5	6	7	8
8	9	10	11	12	13	14	12	13	14	15	16	17	18	9	10	11	12	13	14	15
15	16	17	18	19	20	21	19	20	21	22	23	24	25	16	17	18	19	20	21	22
22	23	24	25	26	27	28	26	27	28	29	30	31		23	24	25	26	27	28	29
29	30													30	31					

1935

## CALENDAR

1935

JANUARY							MAY							SEPTEMBER						
			1	2	3	4	5		1	2	3	4		1	2	3	4	5	6	7
6	7	8	9	10	11	12	13	6	7	8	9	10	11	8	9	10	11	12	13	14
13	14	15	16	17	18	19	20	12	13	14	15	16	17	15	16	17	18	19	20	21
20	21	22	23	24	25	26	27	19	20	21	22	23	24	22	23	24	25	26	27	28
27	28	29	30	31			26	27	28	29	30	31		29	30					
FEBRUARY							JUNE							OCTOBER						
				1	2		2	3	4	5	6	7	8	6	7	8	9	10	11	12
3	4	5	6	7	8	9	9	10	11	12	13	14	15	13	14	15	16	17	18	19
10	11	12	13	14	15	16	16	17	18	19	20	21	22	20	21	22	23	24	25	26
17	18	19	20	21	22	23	23	24	25	26	27	28	29	27	28	29	30	31		
24	25	26	27	28			30													
MARCH							JULY							NOVEMBER						
				1	2		1	2	3	4	5	6		3	4	5	6	7	8	9
3	4	5	6	7	8	9	7	8	9	10	11	12	13	10	11	12	13	14	15	16
10	11	12	13	14	15	16	14	15	16	17	18	19	20	17	18	19	20	21	22	23
17	18	19	20	21	22	23	21	22	23	24	25	26	27	24	25	26	27	28	29	30
24	25	26	27	28	29	30	28	29	30	31				24	25	26	27	28	29	30
31																				
APRIL							AUGUST							DECEMBER						
	1	2	3	4	5	6	4	5	6	7	8	9	10	1	2	3	4	5	6	7
7	8	9	10	11	12	13	11	12	13	14	15	16	17	8	9	10	11	12	13	14
14	15	16	17	18	19	20	18	19	20	21	22	23	24	15	16	17	18	19	20	21
21	22	23	24	25	26	27	25	26	27	28	29	30	31	22	23	24	25	26	27	28
28	29	30												29	30	31				



## COLLEGE CALENDAR, 1934

- May 5—Saturday, Crowning of May Queen—Parents' and Visitors' Day.
- May 12—Saturday, Scholarship Day.
- June 4—Monday, Last Registration Day (for present students.)
- June 7—Thursday, 7:00 P. M. Open Sessions of Philalethean and Cleiorhetean Literary Societies.
- June 8—Friday, 1:30 P. M. Meeting of Board of Trustees.
- June 8—Friday, 8:00 P. M. Reception by President and Mrs. Clippinger to Senior Class, Cochran Hall.
- June 9—Saturday, Alumni Day.
- June 9—Saturday, 7:00 A. M. W. A. A. Breakfast.
- June 9—Saturday, 7:00 A. M. Varsity "O" Breakfast.
- June 9—Saturday, 8:00 A. M. Quiz and Quill Breakfast.
- June 9—Saturday, 8:00 A. M. Chaucer Club Breakfast.
- June 9—Saturday, 8:30 A. M. Class Reunions.
- June 9—Saturday, 9:00 A. M. Meeting of Board of Trustees.
- June 9—Saturday, 10:00 A. M. Alumni Business Meeting.
- June 9—Saturday, 12:00 M. Alumni Luncheon and Reunion.
- June 9—Saturday, 2:00 P. M. Senior Class Day Program.
- June 9—Saturday, 4:00 P. M. Philalethean Tea.
- June 9—Saturday, 4:00 P. M. Cleiorhetean Tea.
- June 9—Saturday, 8:00 P. M. Senior Class Play.
- June 10—Sunday, 10:45 A. M. Baccalaureate Service.
- June 10—Sunday, 3:45 P. M. Joint Anniversary of Christian Associations.
- June 10—Sunday, 7:30 P. M. Concert by School of Music.
- June 11—Monday, 7:00 A. M. Pi Kappa Delta Initiation and Breakfast.
- June 11—Monday, 8:00 A. M. Theta Alpha Phi Initiation.
- June 11—MONDAY, 10:00 A. M. SEVENTY-EIGHTH ANNUAL COMMENCEMENT.
- Sept. 8—Saturday, 2:30 P. M. to Tuesday, Sept. 11, 4:00 P. M., Freshman Week Program. Attendance of all freshmen required. (See page 26.)
- Sept. 11—Tuesday, 8:00 A. M. to 5:00 P. M., Registration.
- Sept. 12—Wednesday, FIRST SEMESTER BEGINS. 7:30 A. M., Classes begin. 11:30 A. M., Opening Exercises.
- Nov. 29—Thursday, Thanksgiving Day.
- Dec. 18—Tuesday, 4:00 P. M. Christmas recess begins.



1935

- Jan. 3—Thursday, 7:30 A. M. Christmas recess ends.  
Jan. 21—Monday. Registration for second semester.  
Jan. 26—Saturday, 12:00 M. First Semester ends.  
Jan. 29—Tuesday, 7:30 A. M., Second Semester begins.  
Feb. 22—Friday. Washington's Birthday. A holiday.  
Mar. 3—Sunday. Evangelistic Meetings begin.  
Mar. 17—Sunday. Evangelistic Meetings end.  
Apr. 3—Wednesday, 12:00 M. Spring recess begins.  
Apr. 10—Wednesday, 12 M. Spring recess ends.  
Apr. 26—Friday. Founders' Day.  
May 4—Saturday. Crowning of May Queen—Parents' Day.  
May 11—Saturday. Scholarship Day.  
June 3—Monday. Last registration day for present students.  
June 10—MONDAY. SEVENTY-NINTH ANNUAL  
COMMENCEMENT.



## CORPORATION

### BOARD OF TRUSTEES

<i>Chairman</i> —F. O. Clements, A.M., Sc.D. ....	Detroit
<i>Vice-Chairman</i> —E. F. Crites.....	Barberton
<i>Secretary</i> —E. L. Weinland, Ph.B., LL.B. ....	Columbus

### ALLEGHENY CONFERENCE

Rev. John I. L. Ressler, D.D., Beaverdale, Pa. ....	Sept., 1934
Homer B. Kline, A.B., Wilkinsburg, Pa. ....	Sept., 1935
Rev. E. B. Learish, D.D., Johnstown, Pa. ....	Sept., 1936

### EAST OHIO CONFERENCE

E. F. Crites, Barberton .....	Sept., 1934
J. S. Wilhelm, Ph.B., Canton.....	Sept., 1935
Rev. P. M. Redd, A.B., Canton .....	Sept., 1936

### ERIE CONFERENCE

Rev. C. M. McIntyre, Jamestown, N. Y.....	Sept., 1934
Rev. F. S. McEntire, A. B., Buffalo, N. Y.....	Sept., 1935
Rev. U. B. Brubaker, Clarence Center, N. Y.....	Sept., 1936

### FLORIDA CONFERENCE

Rev. William O. Bearss, Tampa, Florida .....	Sept., 1932
--	-------------

### MIAMI CONFERENCE

Rev. M. W. Mumma, M.A., Newport, Ky. ....	Aug., 1934
Rev. E. R. Turner, A.B., Middletown .....	Aug., 1935
Rev. J. P. Hendrix, A.B., Brooksville .....	Aug., 1936

### MICHIGAN CONFERENCE

Henry W. Jones, Detroit, Michigan .....	Sept., 1933
Rev. I. E. Runk, D.D., Grand Rapids, Michigan .....	Sept., 1934
Rev. J. F. Hatton, A.B., Detroit, Michigan .....	Sept., 1935

### SANDUSKY CONFERENCE

M. B. Monn, Shelby .....	Sept., 1934
Rev. O. E. Knepp, Willard .....	Sept., 1935
Rev. C. O. Callender, D.D., Toledo.....	Sept., 1936

### SOUTHEAST OHIO CONFERENCE

James E. Newell, A.B., Columbus .....	Sept., 1934
E. S. Neuding, Circleville .....	Sept., 1935
Rev. T. C. Harper, D.D., Circleville .....	Sept., 1936



## TRUSTEES

### TENNESSEE CONFERENCE

Rev. C. H. Babb, Greeneville, Tenn. .... Oct., 1934

### WEST VIRGINIA CONFERENCE

Rev. F. H. Capehart, D.D., Parkersburg, W. Va. .... Sept., 1934  
 J. Blackburn Ware, Philippi, W. Va. .... Sept., 1935  
 Rev. Ray N. Shaffer, A. B., Clarksburg, W. Va. .... Sept., 1936

## TRUSTEES AT LARGE

Frank D. Wilsey, LL.D., New York City ..... June, 1934  
 Bishop A. R. Clippinger, D.D., Dayton ..... June, 1934  
 Mrs. Emma B. Thomas, Westerville ..... June, 1935  
 W. F. Hutchinson, Columbus ..... June, 1935  
 Fred H. Rike, A.B., Dayton ..... June, 1936  
 Jacob S. Gruver, A.M., Washington, D. C. .... June, 1936  
 Homer P. Lambert, A.B., Anderson, Ind. .... June, 1936  
 John Thomas, Jr., A. B., Johnstown, Pa. .... June, 1937  
 Mrs. Frank J. Resler, Ph.B., Columbus ..... June, 1937  
 E. N. Funkhouser, A.B., Hagerstown, Md. .... June, 1938

### ALUMNI TRUSTEES

F. M. Pottenger, M.D., Monrovia, Calif. .... June, 1934  
 Andrew Timberman, M.D., Columbus. .... June, 1934  
 Rev. A. T. Howard, D.D., Dayton ..... June, 1935  
 I. R. Libecap, A.B., Dayton ..... June, 1935  
 F. O. Clements, A.M., Sc.D., Detroit, Michigan ..... June, 1936  
 P. H. Kilbourne, M.D., Dayton ..... June, 1936  
 Mrs. Frank E. Miller, A.M., Westerville. .... June, 1937  
 Mabel Gardner, M.D., Middletown ..... June, 1937  
 E. L. Weinland, LL.B., Columbus ..... June, 1938  
 J. H. Weaver, Ph.D., Hilliards ..... June, 1938

### EXECUTIVE COMMITTEE

Walter G. Clippinger, *Chairman*

F. O. Clements	J. H. Weaver
E. F. Crites	E. B. Learish
W. F. Hutchinson	P. A. Kilbourne
Andrew Timberman	F. H. Capehart
E. L. Weinland	



## OFFICERS OF ADMINISTRATION

WALTER GILLAN CLIPPINGER, B.D., D.D., LL.D.

*President*

FLOYD J. VANCE, A.M.

*Registrar and Acting Dean*

HORTENSE POTTS, A.M.

*Dean of Women*

J. P. WEST, A.M.

*Treasurer of the College*

J. H. McCLOY, M.S.

*Secretary of the Faculty*

TIRZA L. BARNES, B. S.

*Librarian*

LEWIS W. WARSON, A.B.

*Director of Alumni Relations*

JOHN R. KING, A.B.

*Field Representative and Farm Manager*

FLOYD C. BEELMAN, A.B.

ALICE BEELMAN, A.B.

*Managers of King Hall*

DAISY M. FERGUSON

*Matron of Saum Hall*

ARLENE NOYES, R.N.

*Resident Nurse*

RUTH C. BAILEY, A.B.

*Secretary to the President*

DOROTHY M. LINSOTT

*Secretary to the Treasurer*

J. STUART INNERST, B.D., A.M.

*College Pastor*



## FACULTY OF INSTRUCTION

In the list below, with the exception of the President, the names are arranged in order of seniority of service in Otterbein College. The date indicated marks the year of appointment.

WALTER GILLAN CLIPPINGER, B.D., D.D., LL.D.

PRESIDENT

1909-

GEORGE SCOTT, Ph.D.

*Flickinger Professor Emeritus of Latin Language and Literature*  
1888-1931

TIRZA L. BARNES, B.S.

*Librarian*

1890-

THOMAS J. SANDERS, Ph.D., LL.D.

*Hulitt Professor Emeritus of Philosophy*  
1891-1931

CHARLES SNAVELY, Ph. D.

*Professor of History*

1900-

SARAH M. SHERRICK, Ph.D.

*Professor Emeritus of English Literature*  
1902-1932

LULA MAY BAKER, A. B., B. Mus.

*Instructor in Piano*

1903-

GLENN GRANT GRABILL, B.Mus., A.A.G.O.

*Director of the Conservatory of Music*

1905-

ALZO PIERRE ROSSELOT, Ph.D.

*Professor of Modern Languages and Literatures*

1905-

ANNA DELL LAFEVER, Ph. B.\*

*Assistant Librarian*

1908-1934

---

\* Died February 7, 1934.



FACULTY OF INSTRUCTION

9

LOUIS AUGUSTUS WEINLAND, Ph.D.

*Professor of Chemistry*

1908-

EDWARD WALDO EMERSON SCHEAR, Ph.D.

*Professor of Biology and Geology*

1912-

JAMES H. McCLOY, M.S.

*Merchant Professor of Physics and Astronomy*

1913-

ROYAL F. MARTIN, B.P.E., A.B.

*Professor of Physical Education*

1913-17; 1919-

CARY O. ALTMAN, A.M.

*Acting Professor of English Language and Literature*

1915-

ARTHUR R. SPESSARD, B.I.

*Professor of Voice*

1916-

BENJAMIN CURTIS GLOVER, A.M.

*Dresbach Professor of Mathematics*

1919-

FRED A. HANAWALT, M. S.

*Assistant Professor of Biology*

1920-

GILBERT E. MILLS, A. M.

*Assistant Professor of Modern Languages*

1920-

EDWIN M. HURSH, A. M.

*Professor of Religious Education and Sociology*

1922-

BYRON W. VALENTINE, B.D., A.M., LL.D.

*Professor of Education*

1922-

JESSE S. ENGLE, B.D., A.M.

*Professor of Bible*

1923-



## OTTERBEIN COLLEGE

MABEL DUNN HOPKINS

*Instructor in Violin*

1923-

HAZEL BARNGROVER, A.B., B.Mus.

*Instructor in Stringed Instruments, Piano and History of Music*

1924-

MABEL CRABBS STARKEY

*Instructor in Voice and Public School Music*

1924-

HORACE W. TROOP, A. M.

*Professor of Economics and Business Administration*

1924-

MAE HOERNER, A.M.

*Professor of Home Economics*

1925-

R. K. ELDER, A.B., M.D.

*Coach and Assistant Professor of Physical Education*

1925-27; 1929-

FRANCES HARRIS, A.B., B.Mus.

*Instructor in Piano*

1926-

PAUL E. PENDLETON, A.M.

*Assistant Professor of English Language and Literature*

1926-

NELLIE SNAVELY MUMMA, Litt.B.

*Assistant Librarian*

1927-

JOHN F. SMITH, A.M.

*Professor of Public Speaking*

1927-

A. J. ESSELSTYN, M.S.

*Assistant Professor of Chemistry*

1928-

RAYMOND E. MENDENHALL, Ph. D.

*Director of Teacher Training*

1928-



FACULTY OF INSTRUCTION

11

HORTENSE POTTS, A.M.

*Dean of Women and Assistant Professor of Religious Education*  
1928-

HARRY HIRT

*Instructor in Wind Instruments and Band*  
1929-

FLOYD BEELMAN, A.B.

*Instructor in Physical Education*  
1930-

THOMAS A. VANNATTA, B.D.

*Hulitt Professor of Philosophy and Psychology*  
1931-

RUTH MENDEL, A.M.

*Acting Professor of Classic Languages and Literature*  
1931-

MARION L. THOMPSON, A.M.

*Director of the School of Art*  
1932-

ELIZABETH M. GARLAND, A.B.

*Director of Physical Education for Women*  
1932-



## OTTERBEIN COLLEGE

## STUDENT ASSISTANTS

*Office of Registrar*

ANNA L. MEDERT  
VIRGINIA HETZLER  
GLADYS RIEGEL

*Office of Dean of Women*

ELSIE CROY  
DOROTHEA ROHRER  
HELEN VAN SICKLE

*Alumni Office*

RUTH JACKSON

*Biology*

R. D. FETTER  
MILDRED WELLS  
JOHN DEEVER

*Chemistry*

VERLE MILLER  
JOHN COOK

*English*

ERMA JORDAN  
RUTH GIBSON

*Home Economics*

EVELYN DUCKWALL

*Library*

BONITA ENGLE  
EVELYN NICHOLS  
JANE BURDGE

*Physics*

HAROLD GLOVER

*Public Speaking*

ROBERT FUNK  
STEWART COX  
ROBERT MUNDEN



*Physical Education*

DONALD MARTIN

*Publicity*

DWIGHT BARNES

KENNETH BARTON

CHARLES BOTTS

TOM BRADY

EDWARD NISWANDER

*Saum Hall*

MARY OTSUKI



OFFICERS AND COMMITTEES  
of the  
FACULTY OF OTTERBEIN COLLEGE  
1933-34

## OFFICERS OF ADMINISTRATION

W. G. Clippinger, President  
F. J. Vance, Acting Dean and Registrar  
Hortense Potts, Dean of Women  
F. A. Hanawalt, Secretary of Faculty  
J. P. West, Treasurer

## FACULTY COMMITTEES

## DEAN'S COUNCIL

F. J. Vance, Acting Dean  
Hortense Potts, Dean of Women  
C. O. Altman, Senior Counselor  
H. W. Troop, Junior Counselor  
J. S. Engle, Sophomore Counselor  
A. J. Esselstyn, Freshman Counselor

## CURRICULUM

W. G. Clippinger, F. J. Vance, L. A. Weinland, A. P. Rosselot,  
L. Mae Hoerner, J. S. Engle, J. H. McCloy, R. F. Martin,  
B. W. Valentine, Hortense Potts.

## FRESHMAN WEEK COMMITTEE

B. C. Glover, R. E. Mendenhall, Hortense Potts, F. A. Hanawalt,  
F. J. Vance, Mabel Starkey, A. J. Esselstyn, Floyd Beelman,  
Ruth Mendel, (Special advisers to be assigned for Freshmen  
and Sophomores by the Registrar.)

## ADVISERS

## FRESHMAN COMMITTEE

A. J. Esselstyn, F. J. Vance, E. M. Hursh

## CAMPUS COUNCIL

*Faculty Representatives*

H. W. Troop, J. H. McCloy, Hortense Potts, C. O. Altman

## COMMITTEE ON ADMISSIONS

F. J. Vance, J. H. McCloy, B. C. Glover

## EXTRA-CURRICULA POINT SYSTEM

F. J. Vance, Gilbert E. Mills



FACULTY-STUDENT HOUSING COMMITTEE

F. J. Vance, Hortense Potts, Charles Snively, L. A. Weinland,  
Mae Hoerner, Floyd Beelman

BULLETINS AND PUBLICITY

W. G. Clippinger, Gilbert Mills, C. O. Altman

LIBRARY

Tirza Barnes, Anna Dell Lafever, T. A. Vannatta, Charles  
Snively

SCHEDULE

F. J. Vance, R. F. Martin, G. G. Grabill, Gilbert E. Mills

OHIO ATHLETIC CONFERENCE REPRESENTATIVES

H. W. Troop, R. F. Martin

INTERCOLLEGIATE ATHLETICS POLICY COMMITTEE

H. W. Troop, F. A. Hanawalt, A. J. Esselstyn, Charles Snively  
R. E. Mendenhall

CHAPEL TELLERS

P. E. Pendleton, A. J. Esselstyn, Gilbert Mills, L. A. Weinland

HONORARY DEGREES

W. G. Clippinger, J. S. Engle, Charles Snively, C. O. Altman  
A. P. Rosselot

ALUMNI RECORDS AND PLACEMENTS

L. W. Warson, Gilbert Mills, E. M. Hursh

FACULTY CLUB

Mae Hoerner, J. F. Smith, R. E. Mendenhall, Ruth Mendel, Paul  
E. Pendleton, Elizabeth Garland, Marion Thompson

MUSIC AND ART

G. G. Grabill, Marion Thompson, A. R. Spessard, Lula Baker,  
Mabel Starkey, Hazel Barngrover, Frances Harris

LECTURES AND PUBLIC OCCASIONS

W. G. Clippinger, J. F. Smith

PUBLIC SPEAKING AND DRAMATICS

J. F. Smith, Paul E. Pendleton, Elizabeth Garland, Thomas A.  
Vannatta, Marion Thompson

EXCESS HOURS

A. P. Rosselot, J. H. McCloy, F. A. Hanawalt



## OTTERBEIN COLLEGE

## POLICY DATA

J. S. Engle, E. M. Hursh, C. O. Altman, L. W. Warson  
*Advisory Members:* The President, the Dean, Bishop A. R. Clipping, and the Superintendent of Cooperating Conferences

## IMPROVEMENT OF TEACHING

E. W. E. Schear, B. W. Valentine, Charles Snaveley, Raymond Mendenhall, C. O. Altman, J. H. McCloy, Ruth Mendel

## STUDENT GOVERNMENT

## STUDENT COUNCIL

ROBERT EVANS, President

ZELMA SHAUCK, Secretary-Treasurer

## SENIORS

Dwight Barnes  
 Robert Evans  
 Hugh Glover  
 Virgil Hinton

Alice Dick  
 Hazel Forwood  
 Eleanor Heck  
 Zelma Shauck

## JUNIORS

Stewart Cox  
 John Deever  
 Paul Maibaugh

Elsie Bennert  
 Margaret Burtner  
 Mary Womer

## SOPHOMORES

Melvin Moody  
 Sam Ziegler

Evelyn Nichols  
 Lucille Shoop

## FRESHMEN

Donald Martin

Ruth Cook

## COCHRAN ASSOCIATION

Dorothea Rohrer, President

## KING HALL ASSOCIATION

John Deever, President



## GENERAL INFORMATION

### HISTORICAL STATEMENT

With the founding of Otterbein College the work of higher education in the United Brethren Church began. The founder of Otterbein College, Rev. Lewis Davis, D.D., is the father of higher education in the denomination.

The General Conference of 1845 authorized and recommended the founding of a college. The Board of Trustees met for its first session in Westerville, April 26, 1847. The work of the College began September 1, 1847.

From that time to the present, Otterbein has made growth and progress through varying degrees of success from a plant valued originally at \$1,300 with only one professor and three instructors, to a plant whose present valuation, including endowment, is over two million dollars, with a faculty of forty professors and instructors, and eleven buildings.

This institution has offered only the traditional liberal arts courses demanded of a school of this character. In recent years, however, in order to meet the pressing demands of the age, more emphasis has been placed upon the importance of vocational work. Of special note is the work in the department of education and its emphasis on teacher training.

Otterbein has been aggressive in that she has stood out in a marked fashion with an identity peculiarly her own in several particulars. Otterbein furnished the first State Young Women's Christian Association secretary in the world. Its Young Men's Christian Association and its Young Women's Christian Association were the first col-



lege associations in the State, and its splendid building for Association purposes was the first of its kind in the country. Otterbein was the second college in the world to admit women on an equality with men. In slavery times she stood staunchly in defense of the rights of the black man and has always figured prominently in temperance movements.

She maintains her well-earned place in the front ranks of the colleges of Ohio. Otterbein College is a member of the Ohio College Association, the North Central Association of Colleges and Secondary Schools, and the Association of American Colleges, and is on the approved list of colleges of the Association of American Universities; also, a member of the American Association of University Women.

#### LOCATION

Otterbein College is located at Westerville, Ohio, twelve miles north of Columbus, on the Cleveland, Akron and Columbus branch of the Pennsylvania Railway. Convenient transportation by bus, Buckeye Stages, leaving terminal station nearly every hour. Running time, 35 minutes.

Westerville has a population of 3,000 and has all modern improvements. These material conditions, coupled with the high moral tone of the village, make Westerville an ideal place for a college town.

#### BUILDINGS AND GROUNDS

Otterbein's buildings and grounds occupy about forty acres on the west side of Westerville. About twelve acres of this ground are in the main campus, the balance in various contiguous locations separated only by streets from the main campus.



The college group consists of eleven commodious structures.

1. THE ADMINISTRATION BUILDING—A large four-story structure of brick in Gothic style of architecture. Erected in 1870.

2. SAUM HALL—Erected in 1855, a dormitory for girls.

3. THE ASSOCIATION BUILDING—This building is devoted to the interests of the Young Men's and Young Women's Christian Associations. It was constructed in the year 1892. It is also the headquarters of the Women's Department of Physical Education and is fully equipped for this purpose.

4. COCHRAN HALL—Constructed through the gift of Mrs. Sarah B. Cochran, of Dawson, Pa., in the year 1905. It contains rooms to accommodate nearly one hundred women.

5. THE CARNEGIE LIBRARY—It is the gift of Andrew Carnegie. Erected in 1908.

6. THE LAMBERT FINE ARTS BUILDING—This structure is the gift of Mr. G. A. Lambert, of Anderson, Indiana, as a memorial. It is the home of the Conservatory of Music, the Home Economics Department, and the Art Department of the College. Erected in 1909.

7. THE HEATING PLANT—Installed and constructed in 1906.

8. THE PRESIDENT'S HOUSE—The President's House is a comfortable, eight-room structure, located on the north side of the college campus.

9. THE McFADDEN SCIENCE HALL—Funds for this building were appropriated from the money secured during the 1918 campaign. Erected in 1919.



10. KING HALL—A building for men constructed and donated by Dr. and Mrs. John R. King, class of 1894, in 1926.

11. THE ALUMNI GYMNASIUM—It contains a floor sufficiently large for two parallel basketball courts and an auxiliary floor of ample size. There is seating capacity for 1,400 spectators. The gymnasium contains in addition a suite of rooms as alumni headquarters and four recitation rooms. Erected in 1929.

#### HOUSING AND SUPERVISION OF STUDENTS

Otterbein College believes that the physical and social interests of the students can be served best by providing well for their home life while at college. As far as it is humanly possible, fatherly and motherly care is exercised in behalf of both young men and women.

To secure a room, a retaining fee of five dollars is required of each student. No room will be regarded as assigned until said fee has been deposited with the Treasurer. The fee is retained to the end of the year, or to the time of graduation, when the value of any breakage of furniture or damage to the room is deducted. This fee for new students making early application is refundable up to September 1st, provided previous notice is given of the student's inability to enter college.

Board and room rent for both men and women are payable strictly one month in advance. Any student neglecting to settle in this manner, unless by special arrangement with the Treasurer, will be charged with a delinquency fee of twenty-five cents a day until settlement is made.

MEN—All Freshmen and Sophomores are required to room and board in King Hall. Others desiring to room



there may have the privilege until the Hall is filled. Rooms in King Hall range from \$2.00 to \$2.50. An additional charge of \$1.00 is made for room if only one person occupies a room. The rule applies to rooms for three and occupied by two only. Board, \$162.00 per year.

The men may furnish their own bedding except mattress and pillows. If furnished by the Hall an extra charge of \$5.00 per year will be made.

The housing of all non-resident men of the college will be under the direct supervision of a special committee known as the **Housing Committee**.

The Philip G. Cochran Memorial Hall and Saum Hall are the residence Halls for women. The rooms rent for \$2.25 or \$2.50 per week, per student, excepting a very few rooms at prices as low as \$1.50. Cochran Hall has accommodations for eighty-five residents as well as the common dining hall for women. Board in both halls, \$162.00 per year.

The students supply their own towels and bedding except mattress and pillows. Curtains, dresser and table covers are not furnished. Rugs are provided. *No woman will be permitted to room or board outside the residence Halls except with the approval of the faculty.*

#### HEALTH SERVICE

As a part of the health service a professional nurse is employed to care for all minor illnesses of students. Two rooms, one in Cochran Hall and one in King Hall, are set aside for hospital purposes.

#### LIBRARIES

The Library, including the libraries of the Philomathean and Philophronean Societies, contains about thirty-five thousand volumes and pamphlets.



## RELIGIOUS SERVICES

A chapel assembly is held every morning, except Saturday and Sunday, at eleven-thirty. All students are required to be present at the regular chapel service.

A unified service of public worship and church school is conducted at ten o'clock every Sunday morning in the college church. All students are expected to be present, except those who arrange to worship elsewhere.

## PHYSICAL EDUCATION

Physical training is required of all college students in the Freshman and Sophomore years. The Department of Physical Education offers a minor to both men and women which meets the approval of the State Department of Education. A college major is offered in this department.

Each student is given a physical examination on entering. Athletics include Varsity teams in football, basketball, baseball and track. The college participates in intercollegiate contests with other colleges in Ohio. Intramural activities are arranged in the various sports for both men and women.

Uniform gymnasium clothing is required for those who are members of the gymnasium classes. It is advised that the purchase of equipment be deferred until arrival here.

The Varsity "O" Association is composed of honor men who by virtue of certain proficiency in the various athletic sports are admitted to membership.

The Women's Athletic Association, affiliated with the Athletic Conference of American College Women, fosters athletics for the women of the college. Membership is on a point basis. The object of the Association is to promote high ideals, encourage participation and to afford training for those who may be desirous of becoming teachers of physical education.



## STUDENT ACTIVITIES

## LITERARY SOCIETIES

There two societies—Philalethea and Cleiorhetea for women. The society halls are furnished in attractive fashion and are quite spacious.

## MUSICAL ORGANIZATIONS

The Otterbein College Men's and Women's Glee Clubs, the Banjo-Mandolin Club, the College Orchestra, and the College Band, are all made up of students of the college.

A Music Club composed of members of the faculty and students of the Music Department meets at regular intervals.

## DEBATE, ORATORY AND DRAMATICS

In addition to the regular courses in Public Speaking, ample opportunity is offered for varied forensic expression. Otterbein is a member of the Ohio Inter-collegiate Debating Association, and the Ohio Inter-collegiate Oratorical Association, and each year is represented in these contests. Otterbein participates in both the Peace and the Constitutional contests which are sponsored by national organizations.

Otterbein maintains an active Cap and Dagger Club for those interested in Dramatics. The Otterbein Chapter of Theta Alpha Phi, national honorary dramatic fraternity, honors with membership those students who have fulfilled certain requirements.

There is a chapter of Pi Kappa Delta, an honorary forensic fraternity. Only those students who have represented the college in inter-collegiate debate or oratory are eligible for membership.



## OTTERBEIN COLLEGE

## RELIGIOUS ORGANIZATIONS

The Young Men's Christian Association and the Young Women's Christian Association meet weekly in halls of their own in the Association Building.

Two Christian Endeavor Societies of high grade exist at Otterbein. The meetings are held regularly every Sunday evening.

The Young People's Department of the Sunday School has its own organization.

The Life Work Recruit organization offers encouragement to those interested in Christian work and training.

## CAMPUS CLUBS

The following are important departmental clubs on the campus conducted and participated in by the students and faculty:

The Quiz and Quill Club, for those interested in creative writing; Chaucer Club, for the study of contemporary authors; International Relations Club; Epsilon Chapter of Sigma Zeta Fraternity; Phi Chapter of Phi Sigma Iota; Home Economics Club; Krafts Club; Cap and Dagger Club and Music Club.

## GOVERNMENT

The Cochran Association and the King Hall Association function as student self-governing agencies in the residence halls. The Student Council and the Campus Council are representative of the student and faculty interests.

## STUDENT PUBLICATIONS

*The Tan and Cardinal* is the official college paper. Every phase of college life is given its share of notice.

*The Sibyl* is a student publication issued annually by the Junior Class.



*The Quiz and Quill* is a magazine composed of the best English productions of the college students during the year.

*The Association Handbook*, published yearly by a joint committee of the Y. M. C. A. and Y. W. C. A. members, is a neat pocket manual containing valuable information for new students.

#### FACULTY CLUB

A faculty club composed of all the members of the faculty meets monthly at the regular faculty hour for the discussion of current educational problems.

#### OFFICIAL PUBLICATIONS

*The Otterbein College Bulletin*, the official publication, is issued five times a year, in October, January, April, July and August.

*The Alumni Register*, containing a complete list of the officers, trustees, and alumni of the institution from its founding, is issued at intervals of five or six years.

#### CURRICULUM REQUIREMENTS

The normal load for a student is fifteen to seventeen hours. A student may be permitted excess hours providing he has made a point average of two during the preceding semester and has been carrying at least fourteen hours of work. A student who makes less than a one point average in the work of the preceding semester may be asked to reduce his work below the normal load. In either case the number of hours carried must receive the sanction of the committee on excess hours.

In music, full work shall consist of two lessons per week in a major study (Piano, Organ, Voice, or Stringed Instrument), one lesson per week of a minor study



(Piano, Organ, Voice, or Stringed Instrument) and either Harmony, Counterpoint, or History of Music, one hour per week. In art, full work shall consist of regular work in the studio and at least one text-book subject.

#### FRESHMAN PERIOD AND ORIENTATION

Freshman Period begins Saturday, September 8, at 2:30 P. M. and continues through Sunday, Monday and Tuesday. This is not an optional introduction to the college course. It is an integral part of it. (Detailed program of the period will be available about August 10.) This is the freshman's opportunity to make a good beginning of his college work toward the attainment of scholarship and the development of character.

This work of Freshman Period is continued throughout the first semester in a one hour credit course known as the Orientation course. This course consists of lectures and discussions on adjustment to campus life and a guidance program introductory to the entire field of knowledge. It is followed in the second semester by a one hour course in personal hygiene. *Participation is required of all freshmen not only in the class work of the Orientation and Hygiene courses but also in the exercises of Freshman Period.*

#### GRADING SYSTEM

The symbols A, B, C, D, F, X, Inc., and W are used in ranking students. The letter A stands for extraordinary attainment in the course. B is good; C average; D poor; and F failure. X is given for unsatisfactory work, failure to take examination, notebook not in, or other similar reason *within the control of the student*. Inc. is used to mark a course which is temporarily incomplete on account of illness of the student or other circumstances *beyond*



*control.* W is used to mark a course regularly discontinued by permission of the instructor and Dean. When a student leaves college within a semester W is used to mark the courses in which he was enrolled if his work was satisfactory at the time of withdrawal.

REMOVAL OF CONDITIONS. A condition not removed by the end of the corresponding semester of the next year shall become an F.

### POINT SYSTEM

The following Point System is a basis for *scholarship* and graduation honors:

For each semester hour of A.....	3 points
For each semester hour of B.....	2 points
For each semester hour of C.....	1 point
For each semester hour of D, F, X, Inc., & W.....	No points

For graduation a student must have at least 124 hours and 124 points. Work taken by correspondence will receive one point per hour. In the case of extension work and private lessons in music the regular point system will be followed.

### SCHOLASTIC HONORS

A point average of 2.3 for both semesters of any one year entitles a student to be listed as an honor student. The list will be published each year in the college catalog.

### SCHOLASTIC HONORS AT GRADUATION

A point average of 2.3 for the entire course entitles a student to have "cum laude" on his diploma.

A point average of 2.6 for the entire course entitles the student to a "magna cum laude" on his diploma.

A student may be eligible for honors at graduation on the basis of two years of work at Otterbein, provided he



submits evidence of excellent grades in work transferred from other standard institutions.

### EXAMINATIONS

Written examinations in all classes are held at the middle and close of each semester and grades are reported to parents or guardians.

### DEGREES AND DIPLOMAS

The degree of Bachelor of Arts (A.B.) will be conferred upon those who complete satisfactorily 124 hours of college work and earn 124 or more points, as prescribed in the college catalog; the degree of Bachelor of Science (B.S.) may, on the same conditions, be conferred upon those majoring in the departments of Biology, Chemistry, Mathematics, or Physics.

The degree of Bachelor of Music (B.Mus.) will be conferred upon those who satisfactorily complete the work prescribed in music, as described in that department, and the degree of Bachelor of Public School Music (B.P.S.M.) upon those who satisfactorily complete the work in Public School Music.

The degree of Bachelor of Fine Arts (B.F.A.) will be conferred upon those who complete satisfactorily the work in art as described in the department of art.

### GENERAL REGULATIONS

Otterbein has a few specific regulations governing student conduct. It depends rather upon the fair minded student to observe cheerfully the social proprieties without check or restraint. There are, however, well recognized restrictions concerning certain practices.

The use of intoxicating liquors in any form, the use of tobacco on the campus or streets facing the campus and



the social dance are not considered a contribution to a student's education and are, therefore, prohibited.

No secret society is permitted and no other self-perpetuating society or organization may be formed without permission from the Faculty.

A student who is a member of any college organization representing Otterbein in intercollegiate or special extra curricular relations shall not participate in such activities unless a satisfactory standard in scholarship is maintained and the student complies with all other college regulations. A student in an individual capacity representing the college shall conform to the same standard.

Five unexcused absences from daily chapel shall be the maximum for a semester. Any student who has more than five unexcused absences shall be suspended by the Dean for a period of three days.

Every absence from the last recitation in any study before a recess, or from the first recitation in any study following such a recess, or vacation, shall reduce the credit for that course one hour.

#### REGISTRATION

*Registration as a student of Otterbein is understood to imply a willingness to comply with the social ideals and traditions of the college.*

Entrance credentials must be sent early in the summer.

Students will not be enrolled unless their entrance certificates or certificates of transfer from other institutions with letters of honorable dismissal, are in the hands of the Registrar.

Students are required to register in person with the Registrar and make all necessary arrangements for studies not later than the first day of each semester.



As a part of their registration, students are required to choose an adviser not later than the beginning of the Junior year. This choice is to be made a matter of record by the Registrar and any change of adviser must likewise be recorded.

Students shall have their studies for the following semester entered by their professors on cards for that purpose, and deposited in the college office at least ten days before the close of the semester then in session.

#### FEES FOR DELINQUENCY AND CHANGE OF SCHEDULE

All students not entering for the first time, failing to register as above directed, will be required to pay a penalty of \$1.00 for each day of delay. The same penalty will be imposed for failure to pay tuition and laboratory fees at the time set for such purpose.

Each freshman who fails to register at the time scheduled in the Freshman Period will be charged a fee of \$1.00. The same charge will be made for each of the examinations of the Freshman Period taken out of scheduled time.

A fee of fifty cents is charged for change of schedule.

#### PAYMENT OF BILLS

Students are required to pay bills on or before the second day of the first semester and on or before the first day of the second semester. Board and Room payments are due on the 15th of each month during first semester and on the 1st of each month during the second semester. Late payment fees shall be \$1.00.

#### EXPENSES

*Due to the emergency arising out of the present economic depression Otterbein College makes the following*



*reservations and hereby announces that all tuition laboratory fees, room and board rates, and regulations concerning housing are subject to change without notice at any time. This change may be in the form of an increase or decrease in rates as circumstances demand.*

## ENTRANCE FEES

A registration fee of \$1.00 is charged all students.

An incidental fee of \$14.00 is collected from each student. This is payable at the time of matriculation and covers all necessary personal expenses for all athletics and physical education, including a free ticket to all home games, and health service from the resident nurse.

Two dollars of this amount is appropriated to the *Tan and Cardinal*, the bi-weekly student publication which covers the student's subscription to this paper.

## COLLEGE:

## Tuition—

First Semester, 12 to 17 hours.....	92.50
Second Semester, 12 to 17 hours.....	92.50

Students taking less than twelve hours of work will be charged at the rate of \$8.00 per hour.

Students taking more than seventeen hours of work will be charged at the rate of \$5.00 an hour for each additional hour.

## LABORATORY FEES AND DEPOSITS

	<i>Deposit</i>	<i>Fee Per Semester</i>
BIOLOGY, except 103, 104, 126.....	\$5.00	\$5.00
BIOLOGY 103, 104, 126.....		1.50
BIOLOGY 129E, 132.....		No fee
GEOLOGY .....		1.50
PHYSICS .....		2.00

## CHEMISTRY:

All Courses (Excepting Nos. 159, 160, 163, 164, 167) .....	\$7.50
---	--------



## OTTERBEIN COLLEGE

## HOME ECONOMICS:

Nos. 365-366 .....	\$2.50
Nos. 373-374 .....	7.50
No. 376 .....	1.00

For tuition and other fees in music and art, see those departments.

All fees are payable strictly one semester in advance.

ESTIMATE OF NECESSARY ANNUAL EXPENSE IN  
COLLEGE

DEPARTMENT:	<i>Low</i>	<i>High</i>
Registration and Incidentals.....	\$15.00	\$15.00
Tuition, 12 to 17 hours.....	185.00	185.00
Laboratory Fees .....	10.00	25.00
Board .....	162.00	162.00
Room .....	46.25	92.50
Books and Miscellaneous.....	60.00	125.00
Totals.....	<u>\$478.25</u>	<u>\$604.50</u>

The foregoing estimates include only necessary college expense. No allowance is made for clothing, travel and personal expenditures.

## GRADUATION FEE

Five dollars, payable to the Treasurer four weeks before graduation, is required of every candidate for a bachelor's degree.

A fee of \$1.00 is required of every candidate for a diploma in Music or Art.

REDUCTION TO HONOR GRADUATES OF  
HIGH SCHOOLS

To the first honor graduate of high schools there is a reduction in tuition of twenty-five dollars per year. This reduction is made in any year the student may enter, or either semester of the year, and continues four years. No additional reduction shall be allowed for any other cause.



## OPPORTUNITIES FOR SELF HELP

Dean Vance and the faculty offers helpful service in securing part time work for young men of limited means.

Dean Hortense Potts, Cochran Hall, offers a similar service to young women of limited means.

## ALUMNI EMPLOYMENT BUREAU

The college maintains an Employment Bureau under the direction of the Alumni Secretary to assist members of the graduating class to secure positions on graduation. The Bureau is available also to alumni in the field to assist them in securing promotions.



## SCHOLARSHIPS

In order to aid the needy and worthy students in securing an education, the college has the disposal of the annual income of the following funds:

1. The George E. Welshans Memorial Scholarship, \$1,000.
2. The Allegheny Branch Christian Endeavor Scholarship, \$1,000, available to students from Allegheny Conference.
3. The Southeast Ohio Branch Christian Endeavor Scholarship, \$1,000, available to students from Southeast Ohio Conference.
4. Class of 1914 Scholarship, \$1,500, available to students who have spent at least one year in Otterbein and who are members of one of the college classes.
5. The East Ohio Branch Christian Endeavor Scholarship, \$2,000, available to students from East Ohio Conference.
6. Rev. and Mrs. S. F. Daugherty Scholarship Fund, \$1,500.
7. The Sandusky Christian Endeavor Scholarship, \$878, available to students from Sandusky Conference.
8. The Overholser-Deets Scholarship, \$1,000, available to students from the foreign fields, or those who are planning for foreign service.
9. The Mr. and Mrs. J. S. Kendall Scholarship, \$1,000, available to students from East Ohio Conference.
10. The Erem John Healy Memorial Scholarship, \$1,700, available to ministerial or missionary students.
11. The Mr. and Mrs. S. Hohenshil Memorial Scholarship, \$1,500.



12. The Wagner Scholarship, \$620, available to students from Southeast Ohio Conference preparing for religious work.
13. The Harry R. Clippenger Memorial Scholarship, \$850.
14. The Charles W. Kurtz Memorial Scholarship, \$1,400, available to students from Miami Conference.
15. The Miami Conference Christian Endeavor Scholarship, \$1,000, available to students from Miami Conference.
16. The Rev. E. E. Harris Scholarship, \$627.50.
17. Class of 1918 Memorial Scholarship Fund, \$2,500.
18. The Richard A. Hitt Scholarship Fund, \$2,107.50, available to students from Southeast Ohio Conference.
19. Mr. and Mrs. Edward Goodrich Memorial Scholarship Fund, \$500, available to ministerial or missionary students.
20. Mr. and Mrs. C. Philip Knost Scholarship, \$200.
21. Van Gundy, Beck, and Van Gundy Scholarship, \$2,000.
22. Willey Memorial Church (Cincinnati) Scholarship, \$1,000.
23. Mr. and Mrs. W. F. Rudasill Scholarship, \$1,000.
24. Altoona First Church C. E. Scholarship Fund, \$5,000, available to ministerial or missionary students from this church.
25. The Arthur A. Moore Memorial Scholarship Fund, \$2,000, available to students from East Ohio Conference.
26. Johnstown Park Avenue U. B. Church Scholarship Fund, \$3,954.50, available to students who are members of that church.



27. Lake Odessa, Michigan, C. E. and S. S. Union Scholarship, \$200, available to students from Michigan Conference.
28. Mrs. Martha Soule Scholarship, \$1,000.
29. William Henry Otterbein Hubert Memorial Scholarship, \$500, gift of his mother, Mrs. Caroline Hubert, of the Johnstown, Pa., Park Avenue Church. Available first to student from that church.
30. The Resler Foundation, \$10,500, established by Mrs. Lillian Resler Harford and Professor Edwin D. Resler as a memorial to their parents, Jacob Bruner Resler and Emily Shupe Resler.
31. The M. B. Monn Scholarship, \$1,210. Income cumulative to principal unless otherwise designated by donor.
32. The Solomon Zartman Memorial Scholarship, \$1,000, established by his father, Lewis Zartman.
33. The Mr. and Mrs. George A. Weaver Scholarship Fund, \$1,000. Available to children of missionaries or students preparing for the mission field.
34. The James H. Fennessey Memorial Scholarship Fund, \$5,500. Available to students from the Otterbein Home.
35. The Ephraim D. Hartman Scholarship, \$1,000. Available to members of own family or to students from the Otterbein Home.
36. Mr. and Mrs. D. M. Hollar Memorial Scholarship, \$1,000. Available to students preferably from the Virginia Conference.



## LOAN FUNDS

## THE EBERLY FUND:

By will of Rev. Daniel Eberly, D.D., of Hanover, Pennsylvania, a fund of over five thousand dollars has been left, the income from which will be loaned without interest to worthy students.

## THE CLEMENTS FUND:

A fund of \$10,000, to be known as the Luella Fouts Clements Memorial Fund, has been established by Mr. F. O. Clements, '96. The income from this fund is available to worthy and needy students in the form of scholarships or loans.

## THE ALBERT J. DEMOREST MEMORIAL FUND:

In memory of their father, a loan fund, to be known as the Albert J. Demorest Memorial Fund, has been established by Professor and Mrs. Merrick A. Demorest, '21, '20. This fund is available to a worthy, high-grade student.

## PRIZE SCHOLARSHIP

Pierre Frédéric and Louise Marguerite Rosselot Scholarship, \$1,000. For a Senior who shall have attained high rank in the departments of American and European History, Political Science, and French Language, and who shall have made a special study of some phase of international relations.

## PRIZES

Rev. Howard H. Russell, D.D., founder and associate superintendent of the Anti-Saloon League of America, has established two series of prizes for those who win distinction in Public Speaking and Oratory at Otterbein.



1. RUSSELL PRIZE, DECLAMATION CONTEST—Three prizes of twenty-five, fifteen and ten dollars each, are offered to students who win the first three places in the annual declamation contest for underclassmen.

2. RUSSELL PRIZE, ORATORICAL CONTEST—Three prizes, twenty-five, fifteen and ten dollars each, are offered to students who win the first, second and third places in the annual oratorical contest for upperclassmen.

3. BARNES SHORT STORY PRIZES—Mr. J. A. Barnes, of Wellesley, Mass., class of '94, has established a short story prize scholarship amounting to \$2,000, the income from which is to be used for prizes of \$40, \$20, and \$10 each for the best stories on Good Citizenship. The sum of \$50 is to be used for the purchase of books for the library bearing upon the subject. This scholarship is established in the memory of Mr. Barnes' brother, Walter Barnes, of the class of '98.

4. WEAVER MATHEMATICS PRIZE—A prize of \$10 is awarded annually by Mr. and Mrs. James H. Weaver of Columbus, Ohio, to the student who distinguishes himself most in the department of mathematics.

5. THE LAWRENCE KEISTER CLASSICAL GREEK PRIZE FOUNDATION—Rev. Lawrence Keister, D.D., Scottdale, Pennsylvania, gave \$1,000 as a permanent foundation for annual prizes in classical Greek to be distributed to first, second and third year students on the basis of ability.

Such variations in all the prizes may be made as changed conditions and discretion suggest.

6. THE LAWRENCE KEISTER NEW TESTAMENT GREEK PRIZE FOUNDATION—The foundation for these prizes consists of \$500. In the fourth year course the major study will be New Testament Greek. To pupils in this course



prizes of fifteen, ten and five dollars shall be made in order of class rank. These awards shall be made in chapel about June 1 of each year. The winners shall also be announced on Commencement Day.

7. THE COX PRIZE FOUNDATION FOR DEBATE—A prize of \$25 is awarded by Mr. J. O. Cox of Valparaiso, Ind., to the winning team in the Freshman-Sophomore debate.

8. QUIZ AND QUILL FOUNDATION, \$1,200—This fund was established by members of the Club to promote the *Quiz and Quill* magazine, to provide prizes for the annual contest promoted by the Club, and to further the interests of creative writing on the campus. Prizes of \$10, \$5, and \$3 are awarded by the Quiz and Quill Club for the best English essay or poem written by either a Freshman or a Sophomore.

9. THE ROY BURKHART PRIZES IN CREATIVE WRITING—Mr. Roy Burkhart, class of 1927, has offered \$35 in prizes for various types of creative writing. This year three prizes in amounts of \$20, \$10, and \$5 will be given for the best short-stories presenting some Christian virtue in action.

#### REQUIREMENTS FOR ADMISSION TO COLLEGE

Fifteen units of work are required for admission to college.

Four one-hour recitations a week, or five recitations of forty-five minutes a week throughout the school year of thirty-six weeks, constitute a unit of work for requirements of admission.

Graduates from first-grade high schools who rank in the upper two-thirds of their classes are admitted to freshman standing upon presentation of a certificate of



graduation. Only a limited number of students ranking in the lowest third of the class will be admitted. Such applications must be in the hands of the Committee on Admissions by August 20. If such a candidate is admitted, he will be placed on probation and must earn a minimum of twelve hours and twelve points the first semester or retire at the end of the semester.

Candidates coming from other colleges or universities who have not earned a minimum of twelve points in their last semester may not be accepted.

The units presented for entrance should include the following:

English .....	3 units
Foreign Language .....	*4 units
History and Civics .....	2 units
Mathematics .....	†2 units
Science .....	2 units
Elective .....	2 units

If the credits presented from the high school contain total number of units but are deficient in any of these five departments, the candidate may be allowed entrance to the Freshman class but will be required to make up the deficiency on the basis of one college unit for two high school units. This must be made up by the close of the sophomore year.

The minimum hours of work required to obtain entrance to the various classes above Freshman are as follows:

At the beginning of the first semester a student must have completed, in addition to any entrance conditions—

---

\*If a student is admitted with 4 units of foreign language, only 8 hours will be required in college. If a student is admitted with 3 units, 12 hours of one foreign language will be required in the college. If a student is admitted on 2 units or less, 16 hours of one foreign language will be required in the college.

†Elementary algebra, one unit, must be offered.



For Sophomore standing.....24 hours and 24 points  
For Junior standing.....56 hours and 56 points  
For Senior standing.....90 hours and 90 points

At the beginning of the second semester the numbers stand as follows:

For Sophomore standing..... 40 hours and 40 points  
For Junior standing..... 72 hours and 72 points  
For Senior standing.....106 hours and 106 points



## REQUIREMENTS FOR GRADUATION

The following is a description of the Major-Minor System adopted by the College:

A semester consists of 18 weeks, or one-half of the college year.

A semester hour is one class hour a week continued through the semester. For illustration, a subject in which a student recites two hours a week for a semester would count two semester hours of credit. One in which he recites three hours a week would count three semester hours of credit.

To graduate, a student must have completed satisfactorily 124 semester hours of work, and have earned at least 124 quality points.

No student can graduate in any department of the College without spending at least one year (the Senior year) in residence at Otterbein.

A major consists of not more than 32 nor less than 24 semester hours in one subject or department.

A minor consists of 15 semester hours in a subject or department other than that in which the major is taken.

One major and one minor must be completed for graduation. However, no student should take more than 36 hours in a department. A student may complete two majors in different departments under the direction of the heads of these departments and may designate who of the two professors shall be the adviser. This arrangement provides for both reasonable specialization and freedom of election and at the same time insures a liberal and general distribution of work through the entire curriculum.



## REQUIRED WORK

## FRESHMAN YEAR

<i>First Semester</i>	<i>Hours</i>	<i>Second Semester</i>	<i>Hours</i>
English (Composition and Rhetoric) .....	3	English (Composition and Rhetoric) .....	3
*Greek, Latin or Mathematics .....	3 or 4	*Greek, Latin or Mathematics .....	3 or 4
Physical Education .....	1	Physical Education .....	1
Orientation .....	1	Hygiene .....	1
Two of the following:		Two of the following:	
Science, Modern Language or History .....	6 or 8	Science, Modern Language or History .....	6 or 8
Total .....	16 or 17	Total .....	16 or 17

Bible required in Sophomore year. All other work elective in all years.

There shall be a special advisory committee for Freshmen to be appointed by the faculty.

The following are the minimum requirements of all students for graduation in the Liberal Arts department:

English Literature or Advanced Public Speaking	6 semester hours
Composition and Rhetoric.....	6 semester hours
Bible .....	6 semester hours
History, Religious Education or Social Science..	6 semester hours
†French, German, Italian, Spanish.....	6 semester hours
Greek, Latin, or Mathematics.....	6 semester hours
Science .....	6 semester hours
Philosophy and Education.....	6 semester hours
Physical Education .....	4 semester hours
Electives .....	72 semester hours

Total.....124 semester hours

Explained more fully, the above means that the amount of work indicated in each subject named will be required of all students for graduation, no matter what may be the major subject. More than these may be taken if it does not conflict with the regulation touching majors and minors.

\*Neither Greek nor Latin in review will meet this requirement. In Mathematics, courses 421 and 422 or 423-424 are required.

†An ancient language may be substituted for a modern on faculty action.



## PRE-PROFESSIONAL COURSES

For the convenience of students who desire to make an intelligent arrangement of their work in college, preparatory to professional courses after graduation, a suggestive arrangement is offered. In no case is this work prescribed or required by the College. Requirements vary in different professional schools, hence these are merely suggestive and quite flexible. For information apply to the dean.

## EXTENSION AND CORRESPONDENCE COURSES

Otterbein is offering a limited number of Extension and Correspondence courses, as follows:

List of courses:

Accounting and allied subjects—Professor Troop.  
English Bible and Religious Education—Professor Engle.  
Biology—Professors Schear and Hanawalt.  
Child Development, The Family and Household Economics—  
Professor Hoerner.  
Education—Professor Mendenhall.  
English Composition—Professor Altman.  
Shakespeare, Drama, Novel—Professor Pendleton.  
American History—Professor Snively.  
Mathematics—Professor Glover.  
Mechanical Drawing—Professor McCloy.  
Physical Education—Professors Martin and Garland.  
Public Speaking—Professor Smith.  
Romance Languages—Professors Mills and Rosselot.  
Religion and Adult Education—Dean Potts.  
Sociology and Missions—Professor Hursh.

These courses are carried in connection with the teaching load of our regular professors. The teachers named above are willing to undertake a limited amount of this work during the school term or in the summer.



Not more than six semester hours may be taken by *correspondence* in one department, and a total of not more than eighteen may count toward graduation. *Extension* courses may be done for more hours if pursued in classes in the *presence of the instructor*, the limit to be determined by the Director and the Professor concerned.

## FEES

Each student on entrance pays a registration fee of one dollar. For correspondence work the tuition is five dollars a semester hour and one dollar a course is charged to cover postage and stationery. For Extension work the tuition is seven dollars a semester hour.

For further details write to F. J. Vance, Director of the Extension Department.

## PARENTAL EDUCATION

Students interested in a minor in Parental Education should see the Dean for particulars.

## SPECIAL WORK FOR TEACHERS

Sufficient work in education is offered to enable students to meet the requirements of the State Law of Ohio for the four-year provisional High School Certificate. Following are the requirements of the State Department of Education:

General Psychology .....	3 semester hours
Educational Psychology .....	3 semester hours
Principles of Education.....	3 semester hours
Special Methods .....	2 semester hours
Observation and Participation.....	2 semester hours
Student Teaching .....	4 or 5 semester hours
Administration and Supervision.....	3 semester hours

and three additional semester hours to be taken from the field of technical education, making a total of 23 semester hours.



Electives from which to choose are offered as follows :

Principles of Teaching.....	3 semester hours
History of Education.....	3 semester hours
Educational Sociology .....	3 semester hours
Tests and Measurements.....	2 semester hours
Introduction to Education.....	3 semester hours

Every prospective teacher must have a teaching major of 18 hours in one department and two teaching minors of 12 hours each in other departments.



## COURSES OF INSTRUCTION

In the numbering of the courses, first semester courses have odd numbers and second semester courses even numbers.

Year numbers are indicated by two numbers separated with a dash (201-202). Credit hours in such courses are given for the year.

Courses marked with an "E" following the regular course number indicate courses in Special Methods for teachers.

Days of the week are abbreviated thus: Monday, M.; Tuesday, T.; Wednesday, W.; Thursday, Th.; Friday, F.; Saturday, S.

### ART HISTORY

MARION L. THOMPSON, B.Sc., M.A., *Art Director*

25-26. A study of the History of Architecture, Sculpture and Painting from the dawn of civilization to the present. Emphasis is placed on appreciation and interpretation rather than on technique and theory.

*Pr.-Req. 351 & 2, 3:00 M.*

*2 hours*

### ASTRONOMY

PROFESSOR McCLOY

51-52. Descriptive Astronomy. Prerequisites, Plane Geometry and High School Physics. This course will include some observation, but it is recommended that the student take 53-54 also.

*9:30, W., F.*

*4 hours*

53-54. Observational Astronomy. Prerequisite, Trigonometry. Two to four hours a week devoted to the taking of measurements and their reduction.

*Hours to be arranged*

*2-4 hours*



## BIBLE AND RELIGIOUS EDUCATION

PROFESSORS ENGLE, HURSH, AND POTTS

A major or minor in this department may be taken with emphasis on either Bible or Religious Education. Courses are planned to be helpful to all interested in this field, as well as foundation work for vocational religious workers. Students choosing a major in this department will confer with the head of the department for selection of courses, from twenty-four to thirty hours being required.

## BIBLE

MR. ENGLE

61. OLD TESTAMENT HISTORY AND LITERATURE. A survey course intended to give a proper appreciation of the Old Testament with special attention to its literary and religious values.

8:30, T., Th., S.; 9:30, M., W., F.

3 hours

62. THE LIFE OF JESUS. The study of the life of Jesus follows a brief survey of the intertestament period of Jewish history. Required course.

8:30, T., Th. S.; 9:30, M., W., F.

3 hours

63. THE LIFE OF PAUL. A study of the life and letters of Paul, with special attention to the non-Jewish environment of the early Christian church. Alternates with course 73. (Not offered in 1934-35.)

1:00, M., W., F.

3 hours

64. THE HEBREW PROPHETS. An introduction to the prophetic literature, with study of selected writings of the prophets.

7:30, T., Th., S.

3 hours



65. THE TEACHING OF JESUS. An attempt to discover the distinctive ethical and religious content of Jesus' teaching. (May be taken in place of Course 62 by permission of instructor.)

7:30, T., Th., S.

3 hours

66. OLD TESTAMENT POETRY AND WISDOM LITERATURE. A study of selected Psalms, Job, and other Wisdom literature of the Old Testament. Alternates with Course 72. (Not offered in 1934-35.)

1:00, M., W., F.

3 hours

67. THE HISTORY OF THE BIBLE. A study of the origin and transmission of the English Bible.

2:00, M., W., F.

3 hours

68. THE USE OF THE BIBLE. A study is made of how the Bible has been used, from the Jewish use of the Old Testament, to present day use of the Bible. Intended especially for those students majoring in Bible or Religious Education, but open to all who have had at least six hours of Bible in content courses.

2:00, M., W., F.

3 hours

## RELIGIOUS EDUCATION

71. PRINCIPLES OF RELIGIOUS EDUCATION. This course provides a comprehensive survey of the field of religious education, dealing with the history, the underlying philosophy, the objectives, the curriculum and technique. It acquaints the student with the agencies of the movement, its expanding program, its present trends, and problems, and is intended as a thorough introduction and background for further work in religious education. Miss Potts.

10:30, M., W., F.

3 hours



72. THE TEACHING WORK OF THE CHURCH. A study of the organization of the church for Religious Education, and its correlation with other religious and educational agencies. Mr. Engle.

1:00, M., W., F.

3 hours

73. INTRODUCTION TO THE PSYCHOLOGY OF RELIGION. A study of the nature of religious experiences; the function of religion in the development of personality; religious consciousness; conversion; worship; leadership, etc. Prerequisite, Course 71, Psychology, or Educational Psychology. Mr. Engle.

1:00, M., W., F.

3 hours

74. PRINCIPLES OF CHRISTIAN LIVING. Attention is given to the fundamental meaning of ethics and morality, to the development of Christian ethical ideals and their application to human relationships in the home, church and community. Alternates with course 76. Miss Potts.

10:30, M., W., F.

3 hours

75. METHODS IN TEACHING RELIGION. A study is made of the principles of method in harmony with an experience-centered curriculum. Each member of the class accepts responsibility for leadership of a group, and attention is given to building and evaluating programs for actual work in religious education. (May be given either semester.) Miss Potts.

Time to be arranged

3 hours

76. THE CURRICULUM OF RELIGIOUS EDUCATION. The course considers historical theories and modern concepts of the curriculum, together with a study of basic principles and an evaluation of available materials for curriculum



construction in Religious Education. Alternates with Course 74. Miss Potts.

10:30, M., W., F.

3 hours

## CHRISTIAN MISSIONS

MR. HURSH

Only one of the following courses will be offered each semester. Therefore, before registering, students should confer with the instructor.

77. THE CHRISTIAN MOVEMENT OF THE MODERN WORLD. A survey course on the spread of Christianity in the modern world. As a background a review will be made of the growth of the church from the beginning to the end of the Eighteenth Century.

10:30, T., Th., S.

3 hours

78. NON-CHRISTIAN AREAS. This course will include not only a study of geographical areas in the non-Christian world, but also a survey of non-Christian areas of life and thought in so-called Christian lands.

10:30, T., Th., S.

3 hours

79. REQUISITES OF A CONSTRUCTIVE MISSIONARY PROGRAM. This course will consider: the program of missionary education for the development of right racial attitudes; the preparation of missionaries for the diversity of specialized services demanded on the foreign field.

10:30, T., Th., S.

3 hours

80. THE RELIGIONS OF THE WORLD TO-DAY. This course will make a brief study of the background of the prevailing religions of the world, and follow this with a more intensive consideration of their present status, the adaptation of their message and program to the new na-



tionalism, the impact of western civilization, and especially the relation they sustain to Christianity.

10:30, T., Th., S.

3 hours

## BIOLOGY

PROFESSORS SCHEAR AND HANAWALT

The combination of courses which may be offered as a major in Biology depends upon the line of professional work for which a student is preparing and must be chosen in conference with the Head of the Department. Geology is offered as a part of a 32 hour major, but will not be accepted as a part of a 24 hour major in Biology.

91-92. GENERAL BOTANY. A general survey of the plant kingdom, emphasizing the economic aspects of the subject. Two lectures, three laboratory hours, and an average of one to two hours of library or field work each week. Mr. Schear.

9:30 or 10:30, M., W.; Laboratory, 2 Sections,  
M., or T., 1-4; Field work F. afternoons.

8 hours

101-102. GENERAL ZOOLOGY. This course begins with the history of zoology and some of the problems associated with life. The animals are studied in an ascending order to man, concentrating upon a few of the most important forms and upon the essential principles of the subject. Two recitations and four hours of laboratory work each week. Mr. Hanawalt.

9:30, M., W., or T., Th., Laboratory, M., W., or  
T., Th., 1-3.

8 hours

103. ENTOMOLOGY. A general study of insect life, the insect being studied in its natural environment as much as possible. Instruction is given in the collection and preservation of insects, insecticides and their application, life histories, natural enemies, winter condition of insects and



its significance. One lecture, one quiz and two to three laboratory hours a week. Laboratory fee \$1.50. Mr. Hanawalt.

8:30, T., Th., S.

3 hours

104. ORNITHOLOGY. Study of birds and bird life. Thirty or more lectures, recitations and frequent reports on assigned topics. Nest building and home life will be investigated in the field. Two lectures; four to six hours in library, laboratory and field. No deposit. Laboratory fee \$1.50. Mr. Hanawalt.

8:30, T., Th., S.

3 hours

105. COMPARATIVE VERTEBRATE ANATOMY. A detailed study of the comparative anatomy of vertebrates. Throughout the course the interrelationship of structure and function is emphasized. One lecture and four laboratory hours each week. Prerequisite, Biology 101-102. Mr. Hanawalt.

7:30, Th., Laboratory, 1:30 to 3:00, T., Th.

3 hours

106. CELLULAR BIOLOGY. A study of the intimate structure and the activities of the cell, divergent types of cell specialization, cell division and growth. Prerequisite, one year of Biology. Mr. Hanawalt.

7:30, Th.; Laboratory, 4-6 hrs. a week.

3 hours

107. GENERAL EMBRYOLOGY. Includes karyokinesis and the early development of amphibians, reptiles and birds; the germ cells and the processes of differentiation, heredity, and sex determination. The subject matter is approached from the standpoint of general biological relations. One lecture and four laboratory hours each week. Prerequisite, Biology 101-102. Mr. Hanawalt.

7:30, T., Th.; Laboratory, M., F., 1-3.

4 hours



108. HISTOLOGY AND ORGANOLOGY. The course includes a study of histological technique, histogenesis and microscopic structure of the tissues and organs of the vertebrate body. Emphasis is laid on the relation of structure to function. One lecture, one quiz, and two to four laboratory hours each week. Students wishing only the histological technique will register for only 2 hours. Prerequisite, Biology 101-102. Mr. Hanawalt.

7:30, T., Th.; Laboratory, M., F. afternoons. 2 to 4 hours

115. GENERAL BACTERIOLOGY. A general course giving instruction in the preparation of culture media, principles of sterilization and disinfection, methods of cultivating, staining and studying bacteria, fermentation with special reference to those affecting foods, and in the relations of bacteria and other micro-organisms to health. Two lectures and four to six laboratory hours each week. Prerequisite, one year of Biology. Mr. Schear.

8:30, T., Th.; Laboratory, 1-4, T., Th. 4 hours

116. ADVANCED BACTERIOLOGY. A biological examination is made of air, water, foods, and soil. Special attention to milk and some of its products. Isolation of bacteria in pure culture from their natural habitat. Specific study of a few of the more common pathogenic organisms. One lecture, one quiz, and four to six laboratory hours each week. Prerequisite, Biology 115. Mr. Schear.

8:30, T., Th.; Laboratory, 1-4, T., Th. 4 hours

121-122. HUMAN PHYSIOLOGY. An introduction to the general principles of physiology and a consideration of their application to the human body. Sufficient attention is given to anatomy and histology to lay a foundation for the study of the properties and hygiene of tissues and organs. Certain advanced problems receive special atten-

tion. Two lectures and six laboratory hours each week. Prerequisite, one year of Biology. Mr. Schear.

10:30, T., Th., Laboratory, 1-4, W. 6 hours

126. GENETICS. A study of the general principles of heredity. Types are chosen from both plant and animal material. Heredity characters found in man are given much consideration. Prerequisite, one year of Biology. Mr. Schear.

8:30, M., W., F.; Laboratory, Sat. A. M. 3 or 4 hours

129-E. SPECIAL METHODS. The teaching of the biological sciences in secondary schools is studied by means of lectures, library references and laboratory work. Special attention is given to the place of laboratory instruction in secondary education, the organization of courses and equipment. Mr. Hanawalt.

8:30, F., S. 2 hours

132. TERMINOLOGY. This course embodies primarily a study of the scientific vocabulary of the various biological sciences with special reference to the origin and root meanings of technical words encountered. Open only to Juniors and Seniors. Mr. Hanawalt.

10:30, W. 1 hour

LABORATORY FEES AND DEPOSITS. All students who register for laboratory courses requiring the use of dissecting instruments, magnifiers, etc., are required to make a deposit of \$5.00 in addition to the regular laboratory fee which covers only cost of materials consumed. The cost of apparatus injured or destroyed is charged against the deposit and the balance refunded. See page 31 for statement of laboratory fees.



## CHEMISTRY

PROFESSORS WEINLAND AND ESSELSTYN

A major in Chemistry shall consist of General, Quantitative and Organic Chemistry, making a total of twenty-four hours. A minor consists of fifteen hours.

151-152. GENERAL CHEMISTRY. The attempt is made in this course to give a thorough drill in the fundamentals of Chemistry and to lay the foundation for the future work of those students who intend to follow this line further. Two hours a week are spent in recitation and four hours a week in the laboratory, working out a carefully graded system of experiments. The last third of the year will be devoted to elementary qualitative analysis. *Three Sections: 10:30, W., F., and 10:30, T., Th., for student presenting high school chemistry for entrance. 9:30, T., Th., for student presenting no chemistry for entrance.*

153-154. QUANTITATIVE ANALYSIS. The best known gravimetric and volumetric methods for the quantitative examination of substances are used in this course. Prerequisite, Chemistry 151 and 152. Six to eight hours in laboratory and two lectures a week.  
8:30, M., W.

153 B - 154 B. ADVANCED ANALYTICAL CHEMISTRY. May include special methods in quantitative analysis or advanced qualitative analysis.  
8 hours

155-156. ORGANIC CHEMISTRY. A study of the compounds of carbon with special reference to industrial applications. Prerequisite, Chemistry 151-152.  
4 to 8 hours

*Two laboratory periods.*  
10 hours

155 B or 156 B. ORGANIC QUALITATIVE ANALYSIS. The separation and identification of organic compounds. Prerequisite, Chemistry 155-156.

*Hours to be arranged.* 2 hours

157-158. HOUSEHOLD CHEMISTRY. One semester of organic and one semester of applied Chemistry with appropriate laboratory work.

7:30, T., Th., S.; one 3-hour laboratory period. 8 hours

157A-158A. GENERAL INORGANIC CHEMISTRY with applications to home problems.

*Hours to be arranged.* 8 hours

159-160. ADVANCED INORGANIC CHEMISTRY.

10:30, T., Th. 4 hours

161-162. MINOR PROBLEMS IN CHEMICAL RESEARCH. A course designed to familiarize the advanced student with the tools and technique of chemical research. Prerequisite, Chemistry 151-152, 153-154, and 155-156 or 163-164. May be elected only by special permission. Fees to be arranged.

*Conference, library and laboratory work.* 2 or more hours

163 - 164. PHYSICAL CHEMISTRY. An introductory course in physical chemistry.

8:30, T., Th. 4 hours

165-166. INORGANIC PREPARATIONS.

*Hours to be arranged.* 4 hours

167. METHODS IN TEACHING CHEMISTRY. This course is designed to supplement work of the Department of Education by presenting problems peculiar to the teaching of chemistry.

9:30, M. and W. 2 hours



168. COLLOIDS. A brief non-mathematical course in the chemistry of colloid systems. Prerequisites, Chemistry 151-152 and 153-154.

9:30, M., W.

2 hours

LABORATORY FEES. To cover cost of materials a fee of \$7.50 will be charged every student taking a laboratory course.

## CIVILIZATION

PROFESSOR ROSSELOT

169-170. CIVILIZATION OF LATIN EUROPE. This is a study of the social, economic, and political conditions and structure of Italy, Spain, Portugal, France, Belgium and Switzerland. A study is also made of the Art, Literature and Music of these countries with special reference to their influence on the character and ideals of the people.

8:30, T., Th., S.

6 hours

169B-170B. CIVILIZATION OF LATIN AMERICA. Similar to courses 169-170, but dealing with the countries of Latin America.

8:30, T., Th., Conference periods at hours to be arranged.

6 hours

## ECONOMICS

PROFESSOR TROOP

A MAJOR of from 24 to 32 hours may be taken in this department.

A MAJOR in social science may be taken by combining Economics 171-172, or 173 with European, English, or American History, Sociology, and Political Science.

A MINOR of fifteen hours may be taken.

For students specializing in Economics, the Principles of Economics is a prerequisite for the specialized courses in Business Economics.

Students specializing in other fields than Economics may elect Corporation Finance, Business Law, Marketing, Money and Banking, or Accounting (any or all five) by offering the Principles of Economics as a prerequisite.

Courses in this department are open to Sophomores, Juniors and Seniors.

171-172. THE PRINCIPLES OF ECONOMICS. A general course in Economics: economic ideas; change and progress; the language of economics; land, labor, and capital; and their rewards—rent, wages, interest, and profits; business organizations; value and price; competition and monopoly; money and credit; transportation; foreign trade; public utilities; government and our money; goal of economic progress.

10:30, T., Th., S.

6 hours

173. INTRODUCTION TO ECONOMICS. A one semester course designed to acquaint students not primarily interested in the field of economics and business, with the fundamental principles of our industrial and economic structure. This course will not be considered as a prerequisite to advanced work in economics or business.

7:30, M., W., F.

3 hours

174. ECONOMIC HISTORY AND COMMERCIAL GEOGRAPHY. A course designed to give a broad view of the setting for our present economic system. Of primary interest to those students expecting to do further work in the field of economics or business. (Not offered in 1934-35.)

175. ACCOUNTING I. The legal, industrial, commercial, and financial principles involved in determining how the operations of a business affect the value of its assets



and the amount of its liabilities, profits, and capital; presented through accounting practice beginning with the balance sheet and the profit and loss account, and thence to the law of debit and credit.

A knowledge of bookkeeping is not a prerequisite.

2:00, F., Laboratory, 2:00 and 3:00, M., W.

3 hours

176. ACCOUNTING II. A further development of Accounting I. Students specializing in Economics and electing Accounting I are given credit therefor only upon completion of Accounting II.

2:00, F., Laboratory, 2:00 and 3:00, M., W.

3 hours

177. BUSINESS ORGANIZATION. A general course in business economics; Organization, including selection, training, handling, and pay of workers; office management; accounting; credit; finance; purchasing; simplified practice; advertising and selling (wholesale and retail); risks, policies; forecasting of business conditions; executive control and leadership. (Not offered in 1934-35.)

8:30, T., Th., S.

3 hours

178. MARKETING. Analysis; functions; farm products; other raw materials; manufacturers; retail; cooperation; question of middleman; transportation; finance; risks; news; standardization; prices and competition; price maintenance; state regulation; efficiency; cost; criticism of modern marketing; simplified practice; education of the buyer. The viewpoint of both seller and buyer are given consideration.

7:30, T., Th., S.

3 hours

179. BUSINESS LAW. A course for the future business man and woman and as well for the future active citizen—kinds of law; legal remedies; contracts; sales; agency;

bailments; negotiable instruments; partnerships; corporations; insurance; personal property; suretyship; bankruptcy.

8:30, T., Th., S.

3 hours

180. MONEY AND BANKING. Man's dependence upon money and credit; sound principles of money; bank organization, principles, and operation in serving individuals and business; utilization of banks by business; investment and savings banks; trust companies; banking, prices and business cycles; banking systems.

8:30, T., Th., S.

3 hours

182. CORPORATION FINANCE. Problems, principles, and methods of financing corporations both in organizing and operating; rights, duties, and obligations with reference to stockholders, bondholders, directors, and officers; investment evaluations. (Not offered in 1934-35.)

8:30, T., Th., S.

3 hours

183-184. DEPARTMENTAL SEMINAR. For seniors who are majors in the department of economics and business administration. No others will be admitted.

Hours to be arranged.

1 to 4 hours

## EDUCATION

PROFESSORS VALENTINE AND MENDENHALL

A major in Education shall consist of courses in Education making a total of twenty-four hours.

Admission to this department should be made through personal application to the head of the department during the second half of the first semester of the sophomore year.

Information concerning the requirements for the State Provisional High School Certificate can be found on page 45.



## OTTERBEIN COLLEGE

185. EDUCATIONAL PSYCHOLOGY. A course dealing with the original nature of man; the laws of learning; habit formation; practice and improvement; transfer of training; mental fatigue; individual differences; the application of scientific methods to problems in education. For Juniors.

9:30 and 10:30, M., W., F.

3 hours

187-188. PRINCIPLES AND TECHNIQUE OF CLASSROOM TEACHING. This course is intended to aid the student in making practical application of his educational psychology and principles. Specific classroom situations are studied and suggested procedures evaluated. Course 192 or Course 185 is prerequisite. For Juniors. Either semester.

7:30, M., W., F.

3 hours

189. SCHOOL ADMINISTRATION. Consideration will be given (a) to developing principles that govern the organization and administration of education throughout a state, and (b) to the duties of the high school principal. For Juniors.

8:30, M., W., F.

3 hours

190. PRINCIPLES OF EDUCATION. A study of the nature and aims of education; formal discipline; studies and their functions; the principal demands of the present day upon the school. Course 185 is prerequisite. For Juniors.

9:30, M., W., F.; 10:30, M., W., F.

3 hours

191-192. OBSERVATION AND PARTICIPATION. A preparation for student teaching. The student attends two recitations weekly and makes two directed observations of teaching in public schools. Enrollment during the first semester is limited to thirty-five. Either semester.

7:30, T., Th.

2 hours

193. MEASUREMENT IN EDUCATION. A course showing the need, the means, and the general method of measurement in education; sample tests and scales as used by teacher, supervisor, and administrator; relation of achievement tests to mental tests; teachers' marks. Required for those who plan to be Principals or Superintendents. (Not offered in 1934-1935.)

7:30, T., Th.

2 hours

194. EDUCATIONAL SOCIOLOGY. In this course a study is made of Education in society and of scientific methods determining the objectives of school education. Course 185 is prerequisite. For Juniors and Seniors.

8:30, T., Th., S.

3 hours

196. HISTORY OF EDUCATION. A course intended to give an understanding of present educational values and practices through an historical consideration of their origin and development. An attempt will be made to correlate education with the social and economic conditions of the times. For Juniors and Seniors.

8:30, M., W., F.

3 hours

197 - 198. STUDENT TEACHING. The prospective teacher is given actual experience in teaching in a public high school, under the supervision of critic teachers and the director of training. All student teachers are required to attend the weekly general conference. There is a fee of fifteen dollars for this course. Course 191 or 192 is prerequisite. For Seniors. Two hours each Semester.

Conference, Sat., 7:30.

4 hours

200. INTRODUCTION TO THE STUDY OF EDUCATION. This course is planned to orient prospective teachers to



some of the larger aspects of education. A questioning attitude is encouraged. For Sophomores and Juniors.

8:30, M., W., F.

3 hours

For courses in Psychology see Philosophy and Psychology, page 83.

## ENGLISH COMPOSITION AND RHETORIC

PROFESSORS ALTMAN, PENDLETON AND POTTS

A major in English consists of twenty-six hours chosen from *Composition and Rhetoric* (exclusive of English 217-218), English Literature, and Public Speaking.

A minor in English consists of twelve hours chosen from the groups indicated above (exclusive of English 217-218).

### 217-218. FRESHMAN COMPOSITION.

Four sections: 7:30, M., W., F.; 7:30, T., Th., S. 6 hours

219. MODERN ESSAYS AND ESSAY WRITING. A course in critical reading and creative writing. Questions of technique and style will be emphasized. The following types will be considered: familiar essay, critical essay, satire, special feature article, and editorial. This and the following course should prove a liberal foundation for journalistic work. Open to students receiving B or better in English 217-218.

8:30, T., Th., S.

3 hours

220. DESCRIPTIVE AND NARRATIVE WRITING. A course in critical reading, creative and journalistic writing. The following types will be considered: descriptive narrative, character sketch, dialogue, and short story. Open to students receiving B or better in English 217-218.

8:30, T., Th., S.

3 hours

221. BUSINESS ENGLISH. A review of fundamentals of rhetoric, study of business letters: inquiry, order, collection, application, sales. A cultural background is maintained through a study of essays of a practical nature.

9:30, W., F.

2 hours

225-226. JOURNALISM. Study of news values, organization of modern newspaper establishments, function of the newspaper in modern society. Writing of news stories, feature articles, editorials. Conducted in cooperation with the *Tan and Cardinal*.

*Hours to be arranged.*

2 hours

227. THE SHORT STORY. A study of the history and technique of the short story, class reports on outside reading, and practice in narration, description, and literary criticism. (Not offered in 1934-35.)

8:30, T., Th., S.

3 hours

228. SHORT STORY WRITING. A course in the writing of the short story.

8:30, T., Th., S.

3 hours

231. THE TEACHING OF ENGLISH. A course intended for those preparing to teach English.

1:00, M., W., F.

3 hours

## ENGLISH LITERATURE

PROFESSORS ALTMAN AND PENDLETON

Major: Twenty-six hours in addition to the required work in English Composition.

All students pursuing courses leading to the degree of Bachelor of Arts shall elect six hours in English Literature or Advanced Public Speaking, during Junior or



## OTTERBEIN COLLEGE

Senior year. Students majoring in English Literature must elect three hours in Advanced Composition.

235. POETIC FORMS. A study of the structure and various forms of English poetry with special emphasis on the old ballad and the lyrical forms. Required of Sophomores majoring in English Literature. Open to all college students.

3 hours

7:30, T., Th., S.

236. ENGLISH ESSAYS. A general survey of the great English essayists of the Nineteenth Century. Required of Sophomores majoring in English Literature. Open to all college students.

3 hours

7:30, T., Th., S.

237. THE DRAMA. A study of its theory and of the history of its development. Open to Seniors and Juniors.

3 hours

8:30, M., W., F.

238. SHAKESPEARE. A critical study of several plays followed by the reading of a number of plays illustrating the development of Shakespeare's dramatic art and his place in Elizabethan literature. Open to Seniors and Juniors.

3 hours

Two sections: 8:30, M., W., F.; T., Th., S.

239. NINETEENTH CENTURY POETRY. With special reference to Wordsworth, Shelley, Keats, and Byron. Open to Seniors and Juniors.

3 hours

9:30, M., W., F.

240. BROWNING AND TENNYSON. Reading and interpretation of representative poems. Open to Seniors and Juniors.

3 hours

9:30, M., W., F.

241. CHAUCER. A literary study of selections from the Canterbury Tales with examination of contemporaries and some work in the history of the English language. Open to all college students.

1:00, M., W., F.

3 hours

242. AMERICAN POETRY. A study of the American scene with chief emphasis on a critical examination of six or more of our leading American poets. Prerequisite, Freshman English.

8:30, M., W., F.

3 hours

243-244. THE NOVEL. A study in the development of technique in prose fiction. Open only to Seniors and Juniors.

9:30, T., Th., S.

6 hours

245. THE PURITAN AGE. Examined with special reference to Milton in his Epic period. Prerequisite, Freshman English. (Not offered in 1934-35.)

1:00, M., W., F.

3 hours

246. CONTEMPORARY POETRY. A study of English and American contemporary poets. Open to all college students. (Not offered in 1934-35.)

1:00, M., W., F.

3 hours

248. MODERN DRAMA. An examination of the best work in Dramatic Literature, English and American, from Ibsen to the present. Open to Seniors and Juniors.

1:00, M., W., F.

3 hours

249. SEMINAR. Recommended for English majors and all others planning to teach English. Directed readings and reports. Open only to Seniors and Juniors.

3:00, F.

1 to 3 hours



250. SEMINAR. A continuation of the preceding course.

3:00, F.

1 to 3 hours

## FRENCH

PROFESSORS ROSSELOT AND MILLS

A major in French consists of from twenty-one to thirty-two hours of college French. Minor fifteen. To be recommended for teaching French a student should have taken Courses 265-266, one of the courses in French Literature, Civilization 168-170, and must have graded B in most of his work in the Department. A course in European History and a reading knowledge of Latin are strongly recommended.

A major in Romance Languages consists of thirty-four hours in French and Spanish or French and Italian.

261-262. GRAMMAR AND EASY PROSE. This course aims to give the student a thorough working basis. The fundamental principles of French grammar are mastered and supplemented with continual practice in dictation and conversation.

9:30, M., W., F.

Laboratory period, 2:00, M., W. or 3:00, M., W.

8 hours

263-264. FRENCH TRANSLATION, COMPOSITION, CONVERSATION. The purpose of this course is to enable the student to translate French with comparative ease. A review of the grammar is a part of the course. Open to those who have had First Year French College or two years of French in High School.

10:30, M., W., F.; T., Th., S.

6 or 8 hours

265-266. COMPOSITION AND CONVERSATION. In this course the student is put in practical touch with the French language by means of daily assignments in com-

position and conversation. Open to those who have had Course 263-264 or its equivalent.

7:30, T., Th., S.

6 or 8 hours

267. THE CLASSICAL DRAMA. A literary study of the classical masters, Corneille, Moliere, Racine, and Voltaire. The reading in class will be supplemented with library work in the history of French Literature and Criticism. Open to those who have had Course 263-264 or its equivalent. (Not offered in 1934-35.)

8:30, M., W., F.

3 hours

268. THE ROMANTIC DRAMA. A literary study of Beaumarchais, Hugo, Dumas, and Rostand. Literary work, discussions, and lectures. Open to those who have had Course 263-264 or its equivalent. (Not offered in 1934-35.)

8:30, M., W., F.

3 hours

269. THE ROMANTIC NOVEL. A study of the development of the novel from the early Italian and Spanish sources to the time of the realistic novel of the Nineteenth Century. Reading, library work, and lectures. Open to those who have had Course 263-264 or its equivalent. (Not offered in 1934-35.)

8:30, M., W., F.

3 hours

270. THE REALISTIC NOVEL. A course in French fiction of the Nineteenth Century, beginning with Balzac. Reading, library work, and lectures. Open to those who have had Course 263-264 or its equivalent. (Not offered in 1934-35.)

8:30, M., W., F.

3 hours

271. THE SHORT STORY. A study of the development of the short story in France, from the early Fables



through the Realistic and Naturalistic Schools to the present time. Open to those who have had Course 263-264 or its equivalent.

8:30, M., W., F.

3 hours

272. THE MODERN DRAMA. A study of the more recent dramatic output of France—Rostand, Maeterlinck, Brieux, Cúrel, Donnay, and others will be studied. Open to those who have had Course 263-264 or its equivalent.

8:30, M., W.

3 hours

285-286. SCIENTIFIC FRENCH. A course especially for those majoring in the natural sciences. Ample opportunity is offered, by the reading of science texts and magazines, to acquire a vocabulary of science words.

8:30, M., W., or as arranged. Open to Juniors and Seniors only or on permission of the instructor.

4 hours

289E. THE TEACHING OF LANGUAGE. A study of the methods now in use for the teaching of the modern languages. Textbook study and criticism. Especially for those who are intending to teach any of the modern languages. Credit as special methods in Education.

8:30, T., Th.

2 or 3 hours

290. ADVANCED GRAMMAR. A course, partly review and partly advanced work, with special attention to the problems of teaching.

8:30, T., Th., or as arranged.

2 or 3 hours

## GEOLOGY

PROFESSORS SCHEAR AND HANAWALT

291. GENERAL GEOLOGY. The elements of the science, covering its main subdivisions. The materials of the earth, their structural features, the forces operating upon

them, and the result. Three lectures and two laboratory hours each week. Several field excursions are included. Prerequisite: General Chemistry. Laboratory fee, \$1.50. Mr. Hanawalt. (Not offered in 1934-35.)

7:30, M., W., F., Laboratory, F. or S. 4 hours

292. HISTORICAL GEOLOGY. The history of the earth and its life is traced from the earliest time to the present. Laboratory work deals chiefly with fossils and type sections. Prerequisite: One Year of Biology and Geology 291. Laboratory fee, \$1.50. Mr. Hanawalt. (Not offered in 1934-35.)

7:30, M., W., F., Laboratory, F. or S. 4 hours

299E. SPECIAL METHODS. The teaching of geography, physiography and general science in the secondary schools is studied by means of lectures, library references, and laboratory work. One lecture and two laboratory hours each week. Given in conjunction with Biology 129. Laboratory fee, \$1.50. Mr. Schear.

8:30, F., S. 2 hours

## GERMAN LANGUAGE AND LITERATURE

PROFESSORS MILLS AND ROSSELOT

A major in German shall consist of not less than three years of college German, making a total of twenty-four hours.

MINOR. Not less than fifteen hours of college German.

301-302. ELEMENTARY GERMAN. The aim of this course is to give the student a knowledge of grammatical forms and a training in reading and oral work.

9:30, T., Th., S.; Laboratory period 3:00, T., Th. 8 hours



303-304. INTERMEDIATE GERMAN. A continuation of the work of the first year with more advanced reading.

10:30, T., Th., S.

6 or 8 hours

305. THE CLASSIC DRAMA. Plays selected from the works of Lessing and Goethe will be read and discussed.

7:30, M., W., F.

3 hours

306. MODERN DRAMA. Plays for this course will be chosen from the works of the dramatists of the Nineteenth Century.

7:30, M., W., F.

3 hours

307. GÖTTE. The work of this course will consist of a careful study of Faust, both first and second parts. Special papers on assigned subjects.

*Time and days to be arranged.*

3 hours

308. THE NOVELLE. A course in the development of the novelle. Selections for reading will be made from several German writers of novellen. Special papers on assigned subjects.

*Time and days to be arranged.*

3 hours

309-310. SCIENTIFIC GERMAN. This course is designed to enable students to read intelligently German scientific literature. Open to students who have a good reading knowledge of German.

9:30, T., Th.

4 hours

313-314. GERMAN COMPOSITION AND CONVERSATION. The purpose of this course is to give the student practice in writing and speaking German. (Not offered in 1934-35.)

7:30, M., W., F.

3 hours

## GREEK

PROFESSORS MENDEL, VALENTINE AND VANNATTA

A major in Greek shall consist of twenty hours. A minor in Greek shall consist of fourteen hours. Biblical Greek will count on either a major or a minor in Bible.

325-326. ELEMENTARY GREEK. This course covers the essential points of Greek grammar and is intended to prepare directly for Homer.

8:30, M., W., F.  
Laboratory 1:00, W.

8 hours  
PROFESSOR VANNATTA

327-328. HOMER'S ILIAD. Selections from the "Iliad" are read in this course. Literary appreciation is a chief consideration, and a study of the Greek hexameter is included.

9:30, T., Th., S.

6 hours  
PROFESSOR MENDEL

331-332. NEW TESTAMENT. Selections to be read are determined partly by the personnel of the class. Open to all who have had one year of Greek. This course is largely interpretative and should prove helpful to Bible students.

7:30, M., W., F.

6 hours  
PROFESSOR VALENTINE

Advanced courses in Greek will be arranged from time to time as the need arises.

## HISTORY

PROFESSORS SNAVELY AND ROSSELOT

A major in History consists of twenty-four hours.

A minor in History consists of fifteen hours.



## OTTERBEIN COLLEGE

74

A minor in the field of the Social Sciences consists of fifteen hours, which may be selected from any of the courses offered in History, Political Science, Sociology, and in Economics, Courses 171-172, 173.

345. ANCIENT HISTORY. This course will make a brief survey of the civilization of the Nile and Tigris-Euphrates Valleys, and of the ancient Greek and Roman.  
8:30, T., Th., S. 3 hours

348. MEDIEVAL HISTORY. This course covers the period from about 476 A. D. to 1500 A.D. Special attention will be given to the organization and power of the church in Western Europe.  
8:30, T., Th., S. 3 hours

349-350. AMERICAN HISTORY TO 1900. This course begins with a brief consideration of the European background of American history, and aims to consider the salient points in American development.  
7:30, T., Th., S. 6 hours

351-352. EUROPEAN HISTORY. The work in this course will begin with 1500 A. D. and will be brought down to date. This will be a textbook course with such library work as time and numbers will permit. There will be two sections, one for Sophomores, Juniors, and Seniors at 8:30, and one open to Freshmen at 10:30.  
8:30, T., Th., S.; 10:30, M., W., F. 6 hours

354E. METHODS. A short course in Methods of Teaching History designed for those who expect to teach history in high school will be offered to meet the State requirement for the provisional certificate.  
10:30, T., Th. 2 hours

355-356. ENGLISH HISTORY. A course designed to cover the most important points in English development from Roman occupation to the present time.

2:00, M., W., F.

6 hours

357. AMERICAN HISTORY FROM 1900. This course will deal with our expansion and colonial problems following the Spanish-American War and with the economic and social problems incident to our rapid industrial development.

10:30, M., W., F.

3 hours

358. A COURSE IN AMERICAN BIOGRAPHY. Open to a limited number of students. The purpose is to develop an interest in reading and study of biography.

10:30, M., W., F.

3 hours

359-360. ORIENTAL HISTORY. This course will deal with points of greatest interest in the civilization and culture of China, Japan, and India. (Not offered in 1934-35.)

8:30, M., W., F.

6 hours

## HOME ECONOMICS

PROFESSOR HOERNER

Major: Those students wishing to prepare for Smith-Hughes Teaching and Dietetics be sure to see Head of Department before registering.

Minor: 15 hours and all prerequisite courses. To fulfill the state requirement for teaching a minor of 18 hours must be taken, Methods recommended.

Electives: All courses except Methods and Problems are open to any student without prerequisites.

365. CLOTHING. A general course; emphasis on selection, care, and cost of clothing, with a brief study of the



fibers used in the manufacture of textile fabrics. Prerequisite or parallel for minors: Art 27 or 28.

9:30, W., F.; Laboratory, 1 to 4, W.

3 hours

366. CLOTHING. 365 repeated.

373. FOODS AND NUTRITION. Food preparation and serving; fundamental principles of nutrition with special reference to a balanced diet. Prerequisite or parallel for minors: Chemistry 157A-158A.

10:30, T., Th.; Laboratory, 1 to 4, T.

3 hours

374. FOODS AND NUTRITION. 373 repeated.

375. CHILD DEVELOPMENT. The nature, development, care and training of the child. Desirable prerequisites: Psychology, Educational Psychology.

7:30, T., Th.

2 hours

376. HOME HYGIENE AND CARE OF THE SICK.

Hours to be arranged.

1 hour

379. EUTHENICS. Open to anyone wishing to survey the problems of right living in relation to the home. Not included in the 15 hours for the minor.

9:30, Th.

1 hour

384. PROBLEMS. For those wishing to do further study in any phase of work already taken in the department. 3 hours will be required for a state teaching minor.

Hours to be arranged.

1 or 2 or 3 hours

385. HOUSEHOLD ECONOMICS. Prerequisite for minors: Economics 173.

10:30, W., F.

2 hours

386. THE HOUSE. Management, care and equipment. Prerequisite for minors: Art 29 or 30.

10:30, W., F.

2 hours

388. THE FAMILY. Development, functions, inter-relationships, organization, responsibilities.

Desirable prerequisites or parallel courses: Psychology, Educational Psychology, Sociology. (See Sociology Department.)

7:30, T., Th.

2 hours

389E. METHODS. Teaching Home Economics in Elementary and Secondary schools.

8:30, W., F.

2 hours

## ITALIAN

PROFESSOR ROSSELOT

Italian may count as a major in Romance Languages if combined with French.

395. ELEMENTARY ITALIAN. A rapid but thorough study of the grammar accompanied by easy reading. The effort will be made to prepare the student to read Dante.

*Hours and days to be arranged.*

3 hours

396. DANTE. A literary study of Dante's Inferno will be undertaken. As many works of reference and criticism will be consulted as is possible. Grandgent's edition will be used in class.

*Hours and days to be arranged.*

3 hours

## LATIN

PROFESSOR MENDEL

A major in Latin shall consist of twenty-six hours and a minor of fourteen or fifteen as circumstances permit.

400. THE CLASSICAL ELEMENT IN ENGLISH. Primarily a study of the influence of Latin in our own language, including both Greek and Latin word studies—



roots, prefixes, suffixes, etc. Given in English, open to all students, no prerequisites. (Not offered in 1934-35.)

*2 hours*

401-402. ELEMENTARY LATIN. A course for those offering no Latin whatever, and equivalent to the first two years of high school Latin.

8:30, T., Th., S.; Laboratory, 1:00 M., W.

*8 hours*

403-404. (A) SECOND YEAR ELEMENTARY. Selections from Cicero's Orations and from Ovid's Metamorphoses. (Not offered in 1933-34.)

403-404. (B) VERGIL'S AENEID. Open to all who have not read Vergil in high school. This course will include the first six books of the Aeneid with emphasis on its literary qualities. This is a splendid "background" course.

8:30, M., W., F.

*6 hours*

405. HORACE (ROMAN POETRY). Selections from the Odes and Epodes will be read. Open to those who have had three or four years of high school Latin.

9:30, M., W., F.

*3 hours*

406. CICERO (ROMAN PHILOSOPHY). The famous "essays" on Friendship and Old Age will be read. Some study of the prevailing philosophies of Rome will be included.

9:30, M., W., F.

*3 hours*

407. CICERO'S LETTERS. Selections from the delightful personal "Letters of a Roman Gentleman."

10:30, M., W., F.

*3 hours*

408. CATULLUS. Selections from one of the most charming of the Roman poets.

10:30, M., W., F.

*3 hours*

409. LIVY (ROMAN HISTORY). Selections will be read from Livy's history. Open to all advanced Latin students. (Not offered in 1934-35.)

*3 hours*

410. PLAUTUS (LATIN DRAMA). Selections will be made from the plays of Plautus. These plays give a most interesting view of the life and language of the common people of Rome. (Not offered in 1934-35.)

*3 hours*

411. LATIN WRITING. A course in the writing of Latin, especially recommended for a comprehensive review of Latin grammar. Open to all who have had Course 401-2 or two years of high school Latin, but especially recommended for those intending to teach Latin. (Not offered in 1934-35.)

*3 hours*

413-414. LATIN METHODS AND SURVEY COURSE. A course primarily for prospective teachers of Latin. Gives a general survey of high school Latin with a study of teaching problems and methods involved, in accordance with the findings of the Classical Investigation and from practical experience. A survey of Latin literature is also included this year.

*10:30, T., Th., S., or 1:00 to 2:30, T., Th.*

*6 hours*

## MATHEMATICS

PROFESSORS GLOVER AND McCLOY

A major in mathematics shall consist of twenty-eight hours and of thirty-six points. A minor shall consist of fifteen hours.

421-422. FRESHMAN MATHEMATICS. Prerequisites, elementary algebra and plane geometry. Three sections



will be formed. Those students of highest ability will be assigned to Section I; those ranking second best, to Section II, etc. The first assignment to these sections will be made on the basis of examinations administered at the first class session. However, students will be changed from one section to another on the basis of their daily work, as occasion may demand. Students registering for this course must not register for other 8:30 courses. No student will be admitted to Sections I or II, except on the basis of the examinations or proven ability to do the work. Mr. Glover and Mr. McCloy.

*Section I, 8:30, M., W., T.*

*Section II, 8:30, T., Th., S.*

*Section III, 8:30, M., W., F.*

*8 hours*

*6 hours*

*6 hours*

423-424. MATHEMATICAL ANALYSIS. A continuation of Course 421-422. Mr. Glover.

*9:30, T., Th., S.*

*6 to 8 hours*

431. BUSINESS MATHEMATICS. Prerequisite, Course 421-422. Topics: Interest, Discount, Annuities, Depreciation, Bonds. Mr. Glover.

*10:30, T., Th., S.*

*3 hours*

432. ELEMENTARY STATISTICS. No prerequisites other than ability to compute with speed and accuracy. Problems will be drawn chiefly from economics. Mr. Glover.

*10:30, T., Th., S.*

*3 hours*

433-434. PROBLEMS. Materials will be selected from the elementary field and from the experience of the students. Open to all students. Mr. Glover.

*Hours to be arranged.*

*2 hours*

437-438. SURVEYING. Prerequisite, Course 421-422. Training in the adjustment, use and care of the different instruments, field practice, keeping of notes, plotting, and

computation. One recitation a week. One period of two hours field work. Mr. McCloy.

*1:00 to 4:00, F.*

*4 hours*

439-440. MECHANICAL DRAWING. The elementary principles of orthographic projection. French's Engineering Drawing is followed for four to six hours a week. Mr. McCloy.

*1:00 to 4:00, M., other hours to be arranged.*

*4 to 6 hours*

451-452. ADVANCED EUCLIDEAN GEOMETRY. A review and continuation of High School Geometry. Mr. Glover. (Not offered in 1934-35.)

*10:30, T., Th., S.*

*6 hours*

453-454. ALGEBRA. Prerequisite, Course 423-424 or its equivalent; may be taken simultaneously with Course 423-424. Algebraic Solution of Equations, Number System, Arithmetic Solution of Equations, Determinants, Series. Mr. Glover.

*9:30, M., W., F.*

*6 hours*

455-456. ANALYTIC GEOMETRY, PLANE AND SOLID. Prerequisite, Course 423-424 or its equivalent; may be taken simultaneously with Course 423-424. (Not offered in 1934-35.)

*9:30, M., W., F.*

*6 hours*

461-462. CALCULUS. Prerequisite, either Course 453-454 or Course 455-456; may be taken simultaneously with one of these courses. (Not offered in 1934-35.) Mr. Glover.

*10:30, M., W., F.*

*6 hours*

463E. METHODS. Prerequisite, Course 461-462; may be taken simultaneously with Course 461-462. Mr. Glover.

*7:30, T., Th., S.*

*3 hours*



## OTTERBEIN COLLEGE

464. FUNDAMENTAL CONCEPTS. Prerequisite, Course 461-462; may be taken simultaneously with Course 461-462. Mr. Glover. 3 hours  
7:30, T., Th., S.

465. DEFINITE INTEGRALS. Prerequisite, Course 461-462. Mr. Glover. 3 hours

466. DIFFERENTIAL EQUATIONS. Prerequisite, Course 461-462. Mr. Glover. 3 hours

## MYTHOLOGY

PROFESSOR MENDEL

501. MYTHOLOGY. The work of this course will include a study of the classic myths of southern Europe, with special reference to the use that has been made of them in literature and art. (Not offered in 1934-35.)

3 hours

## ORIENTATION

505. ORIENTATION. A course for Freshmen based on text book and numerous library references designed (a) to adjust the student to his physical, intellectual and social life on the campus, and (b) as guidance in the various fields of knowledge. Four sections.

Men: 7:30, W. Th. Women: 7:30, M. T.

1 hour

506. ORIENTATION. The work of the second semester deals with the fundamental laws of personal hygiene.

Men: 7:30, W., Th. Women: 7:30, M., T.

1 hour

## PHILOSOPHY AND PSYCHOLOGY

PROFESSOR VANNATTA

A major in the department shall consist of 24 hours. A minor of 15 hours. The department is prepared to offer courses in the Philosophy of Science, the Philosophy of Religion, Modern Realism and certain other Seminar courses which, however, will not be offered in 1934-35.

512. ETHICS. The various schools of ethical thinking with an evaluation of each.

7:30, T., Th., S.

3 hours

515. LOGIC. An elementary study of the principles and processes involved in correct thinking.

8:30, T., Th., S.

3 hours

516. INTRODUCTION TO PHILOSOPHY. The nature and scope of Philosophy—its fundamental problems and their relation to science and religion.

9:30, M., W., F.

3 hours

517-518. THE HISTORY OF PHILOSOPHY. A study of the origin and progress of philosophical inquiry from the Greeks to our own day. Considerable use will be made of the actual writings of the philosophers studied.

10:30, M., W., F. Throughout the year.

6 hours

519-520. GENERAL PSYCHOLOGY. Introduction to the basic facts of mental activity. For Sophomores. A one semester course given each semester.

First Semester: 9:30, T., Th., S.

3 hours

Second Semester: 9:30, T., Th., S.

3 hours

522. ADVANCED GENERAL PSYCHOLOGY. A more extensive study of the topics of General Psychology com-



prising a survey of the various fields of modern Psychology.

*Second Semester: 8:30, T., Th., S.*

*3 hours*

## PHYSICAL EDUCATION

PROFESSORS MARTIN, EDLER, GARLAND AND BEELMAN

A major in Physical Education shall consist of twenty-four hours. A minor shall consist of sixteen hours.

Physical Education is required of all Freshmen and Sophomores and consists of three hours a week of work in the gymnasium or athletic field for which one hour's credit a semester is given.

531-532. FRESHMAN. This work consists of soccer, speed ball, cross country running, marching, calisthenics, gymnastics, games, recreation ball, tennis, track and field athletics for men.

Soccer, hockey, volley ball, cage ball, marching, calisthenics, gymnastic games, simple folk games, tennis, track, and recreation ball form the program for women.

*Men: 10:30, M., W., F.; T., Th., S.*

*Women: 10:30, M., W., F.; T., Th., S.*

*1 hour*

533-534. SOPHOMORES. The work is a continuation of that given in the Freshman year with the addition of apparatus and other advanced work.

*Men: 9:30, M., W., F.; T., Th., S.*

*Women: 9:30, M., W., F.; T., Th., S.*

*1 hour*

535. PRINCIPLES OF PHYSICAL EDUCATION. This course will deal with the basic principles underlying various types of physical activity. (Offered in 1935-36.)

*1:00, M., W., F.*

*3 hours*

536. ORGANIZATION AND ADMINISTRATION OF PHYSICAL EDUCATION. The various systems and methods of

organizing and administering physical education activities will be studied in this course. (Offered in 1935-36.)

1:00, M., W., F.

3 hours

537. HISTORY OF PHYSICAL EDUCATION. This course covers the history of Physical Education from ancient to modern times, the different systems of physical education and the contributions of each to modern methods. (Offered in 1935-36.)

8:30, M., W., F.

3 hours

538. PHYSICAL EDUCATION METHODS. This course is designed to furnish content and method of presentation. (Offered in 1935-36.)

Men: 2:00, T., Th.; Laboratory, 3:00, T., Th.

Women: 2:00, T., Th.; Laboratory, 3:00, T., Th.

3 hours

539. PERSONAL HYGIENE. Principles governing the health of the individual.

8:30, T., Th., S.

3 hours

540. COMMUNITY AND SOCIAL HYGIENE. Community and school attitudes, regulations and activities as they affect the health of the individual.

8:30, T., Th., S.

3 hours

541. FOOTBALL COACHING.

1:00, T.

1 hour

542. BASEBALL COACHING.

1:00, T.

1 hour

543. BASKETBALL COACHING. (Offered in 1935-36.)

Men: 1:00, Th.

1 hour

Women: 1:00, T.

1 hour

544. TRACK COACHING. (Offered in 1934-35.)

Men: 1:00, Th.

1 hour



## OTTERBEIN COLLEGE

529. FOLK DANCING AND DRAMATIC GAMES. 2 hours  
2:00, T., Th.
530. FOLK DANCING AND DRAMATIC GAMES. 2 hours  
2:00, T., Th.
545. THEORY AND PRACTICE OF HOCKEY AND SOCCER. 1 hour  
Women: 1:00, T.
546. THEORY AND PRACTICE OF TENNIS, RECREATION BALL AND VOLLEY BALL. 1 hour  
Women: 1:00, T.
547. ANATOMY AND KINESIOLOGY. The human body will be studied, paying particular attention to the muscles. (Offered in 1935-36.) 3 hours  
8:30, T., Th., S.
548. NORMAL PHYSICAL DIAGNOSIS. The attention in this course will be given to diagnosing the body and noting deviations from normal. (Offered in 1935-36.) 3 hours  
8:30, T., Th., S.
549. ADVANCED PHYSICAL ACTIVITIES. Advanced work in physical activities: apparatus, folk dancing, stunts, gymnastics, games, etc. 1 hour  
8:30, M., W., F.
550. ADVANCED PHYSICAL ACTIVITIES. Continuation of Course No. 549 in the second semester. 1 hour  
8:30, M., W., F.

## PHYSICS

PROFESSOR MCCLOY

A major in this department shall consist of twenty-four hours in the field of Physics or Astronomy.

551-552. GENERAL PHYSICS. Three recitations a week and two hours' laboratory work.\* Mechanics, Sound, and netism, and Light in the second. Prerequisites, Trigonometry, High School Physics.

10:30, M., W., F.; Lab. T. or W., 1 to 3. 8 hours

553-554. GENERAL PHYSICS. To cover the same field as 551-552. A course for those who have not had High School Physics.

9:30, T., Th., S.; Lab., T. or W., 1 to 3. 8 hours

555. ELECTRICITY. Electrical measurements form the basis of this course. Two recitations and two laboratory hours per week the first semester. Prerequisite, General Physics. At least one year of Mathematics should precede this course.

7:30, T., Th., Lab., W., 1 to 3. 3 hours

556. LIGHT. This course is intended for students who wish to obtain a comprehensive knowledge of geometrical and physical optics. Two recitations and two laboratory hours per week. Prerequisite, General Physics.

7:30, T., Th., Lab., W., 1 to 3. 3 hours

557. THEORETICAL MECHANICS. An advanced course which is intended to supplement the mechanics as offered in General Physics. Prerequisites, General Physics and at least one year of Mathematics. Two recitations and two laboratory hours a week.

7:30, T., Th., Lab., W., 1 to 3. 3 hours

558. ADVANCED HEAT. A course intended to supplement the work offered in General Physics. Prerequisites, Heat are taken in the first semester; Electricity, Mag-

---

\* In order to satisfy pre-medical requirements the laboratory work may be increased to four hours a week.



## OTTERBEIN COLLEGE

General Physics and at least one year of Mathematics. Two recitations and two laboratory hours per week.

7:30, T., Th., Lab., W., 1 to 3.

3 hours

Courses 555 and 556 will alternate with 557 and 558.

561-562. ADVANCED LABORATORY PHYSICS. Prerequisite, General Physics.

2 to 4 hours

LABORATORY FEES. For each of these laboratory courses a fee of \$2.00 is charged a semester.

## POLITICAL SCIENCE

PROFESSOR TROOP

A major in social science may be taken by combining courses in Political Science with European, English or American History, Sociology, and Economics 171-172, or 173.

571. AMERICAN GOVERNMENT. National, state, and local; structure, principles, operation, results; with consideration of the nature and influence of political parties.

1:00, M., W., F.

3 hours

573. COMPARATIVE GOVERNMENT. A comparative study of the various governments of the world with reference to character, principles, operation, and results. (Not offered in 1934-35.)

1:00, M., W., F.

3 hours

574. INTERNATIONAL LAW. The science and art of the law governing intercourse and relations between nations, with special reference to the United States, and to the new endeavor to achieve a better world economy through law, justice, and international friendship.

1:00, M., W., F.

3 hours

576. LOCAL GOVERNMENT. The evolution, problems, forms, principles, experiences, and results of state and local government in the United States and in Europe. (Not offered in 1934-35.)

1:00, M., W., F.

3 hours

## DEPARTMENT OF SPEECH

PROFESSOR SMITH

A major in the Department of Speech consists of eighteen hours of Public Speaking and six hours in English Literature; Course 237 and either 238 or 248. A minor in Public Speaking consists of twelve hours Public Speaking in addition to three hours of English Literature; either Courses 237, 238 or 248.

Course 581-582, prerequisite to all other courses, should be taken first.

581-582. ELEMENTS OF PUBLIC SPEAKING. The fundamentals of effective speech will be studied from the standpoint of platform behavior, voice and gesture.

7:30, T., Th.; 8:30, T., Th.; 10:30, T., Th.

4 hours

583. INTERPRETATIVE READING. Intended for those who wish to know and practice the rules of effective oral reading. Selections will be analyzed and delivered before the class. Recommended to teachers or those who expect to engage in platform work.

10:30, M., W., F.

3 hours

584. DRAMATIC INTERPRETATION. Intended for those interested in knowing and practicing the theory of dramatic art in pantomime, impersonation, and dramatic readings.

10:30, M., W., F.

3 hours



## OTTERBEIN COLLEGE

585-586. ADVANCED INTERPRETATION. An application of the principles of Interpretation to the great pieces of literature, both prose and poetry. The study, building and presentation of a lecture recital. Open to advance students.

4 hours

9:30, M., W.

587-588. DEBATE SEMINAR. Open to debate squads, both men and women, including Freshmen-Sophomore teams.

1 to 4 hours

Hours to be arranged.

589-590. ORATORY SEMINAR. Open to students writing orations for the Russell Oratorical or intercollegiate contests.

1 to 2 hours

Hours to be arranged.

591-592. PLAY PRODUCTION. The work offered here is for those interested in play coaching and acting. Practical experience will be given each student in coaching amateur plays. The best ones will be presented publicly.

8:30, M., W., F., or 2 to 5, Th.

1 to 6 hours

593. PERSUASIVE SPEECH. Open to students who have had beginning courses 581-582. The study of speech models. The writing and delivery of speeches with certain world problems in mind. The college oration or debate speech may be developed here.

7:30, M., W.

2 hours

594. ARGUMENTATION. The principles of debating. Leading questions of the day studied and debated in class. Open to students interested in debate.

7:30, M., W.

2 hours

## SOCIOLOGY

PROFESSOR HURSH

A major in Sociology shall consist of the courses in Sociology, certain courses in Economics or Political Science, or History totaling twenty-four to thirty-two hours.

A minor in Sociology shall consist of at least fifteen hours in this department.

A major in Social Science may be taken by combining courses in Sociology with courses in Political Science, Economics 171-172 or 173, History—European, English and American. A minor in Social Science may be taken consisting of a similar combination totaling at least fifteen hours.

629. INTRODUCTION TO THE STUDY OF SOCIETY. This course is open to all students. A study of the elemental social facts and forces involved in human relations; the evolution of social values and institutions; and the direction of human endeavor through social guidance and control.

8:30, T., Th., S.

3 hours

630. COMMUNITY ORGANIZATION. This course is open to all students. A study of American community life today; embracing types of communities; the physical and social forces determining community organization; the control of social processes for reshaping and improving community life.

8:30, T., Th., S.

3 hours

631. PRINCIPLES OF SOCIOLOGY. A more advanced study of society, embracing a study of sociological theory; the principles underlying social facts and forces; and the



art of living in the great society. Prerequisite: Course 629-630, or a course in General or Educational Psychology, or courses in Economics or Political Science.

*3 hours*

*10:30, M., W., F.*

632. SOCIAL PROBLEMS. Applying the principles of sociology to modern social problems: population, the family, crime, correction, poverty, mental disease, etc. Students entering this course should have at least the equivalent of Course 631.

*3 hours*

*10:30, M., W., F.*

633. RURAL SOCIOLOGY. Conditions of social life in rural communities and constructive organization for improvement. (Not offered in 1934-35.)

*3 hours*

*9:30, T., Th., S.*

634. SOCIAL PSYCHOLOGY. A study of the origin and development of personality, the nature and variety of inherent tendencies, acquired behavior, social control, attitudes and prejudices. Prerequisite, Psychology or Educational Psychology. (Offered on demand.)

*3 hours*

*9:30, T., Th., S.*

635-636. CONTEMPORARY WORLD LIFE. The social and religious implications of current movements and events affecting the life of the community, the nation, and the world will be surveyed weekly. By doing additional research work in some phase of contemporary life students, except Freshmen, may earn two hours credit in a semester.

*8:30, W.*

*1 to 2 hours*

637. RACE AND POPULATION PROBLEMS. A study in race relations and the problems of population: migration; immigration; racial conflicts; the bases of racial comity

and cooperation. Prerequisite, Course 631 or 634 or their equivalent.

9:30, T., Th., S.

3 hours

638A. THE SOCIOLOGY OF RELIGION. This course will survey: the place of religion as an instrument of social control in the evolution of society; the place of religion in the organization of modern community life; its relation to education and citizenship; and institutional forms of religion. Prerequisite same as for Course 637.

9:30, T., Th., S.

3 hours

638B. CRIMINOLOGY. A study of crime and the criminal; a history of punishment; modern penal institutions; prevention of crime and the treatment of the criminal. Prerequisite, Courses 631 and 632. (Not offered in 1934-35.)

9:30, T., Th., S.

3 hours

639-640. SOCIAL SERVICE AND FIELD WORK. This is a course in the theory of and practice in social work for students who major in Sociology. There will be one class period a week and in addition voluntary work will be done under the direction of standard social agencies. A student may earn from one to three hours credit each semester, depending upon the amount of time spent in actual work.

Time to be arranged.

1 to 3 hours

SUMMER FIELD WORK. Credit will also be given students for work done during the summer in connection with camps conducted by recognized settlements or other agencies, provided lectures are given and assigned reading is required as a part of the camp program. From three to six hours credit will be given for work done in a camp for a period of from five to ten weeks, providing arrange-



ments have been previously made with the professor in charge.

3 to 6 hours

THE FAMILY. (Home Economics—388.) Credit for this course is given to meet the minimum requirements in Social Science, and is required for a major in Sociology.

## SPANISH

PROFESSORS ROSSELOT AND MILLS

A major Spanish consists of twenty-one to thirty-two hours of college Spanish. Minor fifteen.

641-642. ELEMENTARY SPANISH. A careful study of the grammar and the reading of easy texts. Conversation and dictation form a part of the work, but the student is taught to read and write as soon as possible.

9:30, M., W., F.; Laboratory, 2 to 4, M.

6 to 8 hours

643-644. SPANISH PROSE AND COMPOSITION. The reading of several representative novels and dramas with a review of grammar. Composition. Open to those who have had first year Spanish in College or two years of Spanish in High School.

10:30, T., Th., S.

6 to 8 hours

645. LITERATURE OF THE SEVENTEENTH AND EIGHTEENTH CENTURIES. Representative dramas of Calderon, Lope de Vega and Tirso de Molina, and Gil Blas and Don Quixote, will receive most of the attention of the class. Other readings as time permits.

9:30, T., Th., S.

3 hours

646. LITERATURE OF THE NINETEENTH AND TWENTIETH CENTURIES. A study of the works of the Poets,

Novelists, and Dramatists of the period from 1830 to 1930.

9:30, T., Th., S.

3 hours

651-652. SPANISH COMPOSITION AND CONVERSATION.  
In this course the student is put in practical touch with the Spanish Language by means of assignments in composition and conversation.

9:30, T., Th., S.

6 hours



# SCHOOL OF MUSIC

## FACULTY

WALTER GILLAN CLIPPINGER, B.D., D.D., LL.D.  
PRESIDENT

GLENN GRANT GRABILL, B.Mus., A.A.G.O.  
*Organ, Piano and Counterpoint*  
DIRECTOR

LULA MAY BAKER, A.B., B.Mus.  
*Piano*

ARTHUR R. SPESSARD, B.I.  
*Singing and Choral Work*

FRANCIS HARRIS, A.B., B.Mus.  
*Harmony, Piano and Ensemble*

MABEL CRABBS STARKEY  
*Public School Music and Voice*

MABEL DUNN HOPKINS  
*Violin*

HAZEL BARNGROVER, A.B., B.Mus.  
*Stringed Instruments, Piano and History of Music*

HARRY HIRT  
*Wind Instruments and Band*

## SCHOOL OF MUSIC

The School of Music is located in the Lambert Hall of Fine Arts. Numerous practice rooms, equipped with pianos, which are rented at a normal rate, furnish a means for systematic practice. There is a recital hall which seats about three hundred persons.

## GENERAL INFORMATION

All students taking full work pay an incidental fee of fifteen dollars. Music students taking less than half work are not required to pay this fee. Out-of-town pupils and pupils in the public school grades are also exempt from the fee. The regular matriculation fee of one dollar is, however, required of all pupils. Tuition is payable in advance for each semester.

Reduction is not made for lessons missed, except on account of long illness, and then the college shares the loss with the pupil.

Lessons falling on holidays are not made up.

Students should enter at the opening of the year for the *Theoretical studies*, as classes in beginning Theory are not started during the second semester.

Pupils will be admitted at any time during the year for private lessons, but not for less than the unexpired part of the semester, except by special permission from the Director.

## SYSTEM OF INSTRUCTION

It is the aim in the course of study to give a systematic training, which will prepare the candidate for successful teaching, and at the same time give him a thorough preparation for public performance.



The system of instruction is largely individual. Here the mature judgment and different methods mastered by each instructor are given full expression.

Theoretical work, such as Harmony, Counterpoint, History of Music, etc., is taught in classes.

#### LIBERAL ARTS CREDIT

Studies pursued in the School of Music may be used as electives in the Liberal Arts Courses. For graduation from any department of the School of Music, the student must hold a diploma from a first-class high school, or its equivalent.

#### DEGREES AND DIPLOMAS

Courses are offered leading to a degree in Public School Music Supervising, the Diploma of the School of Music, the Degree of Bachelor of Music. The Liberal Arts Course with Music as major leads to the Bachelor of Arts Degree.

#### MAJOR AND MINOR IN MUSIC

A major in Music shall consist of twenty-four hours including eight hours of Theoretical Music and sixteen hours of Applied Music.

Not more than thirty-two nor less than twenty-four semester hours shall be permitted in Music for a major. Any music over the minimum of twenty-four hours shall be divided equally between Applied and Theoretical Music.

Four hours of Piano are required of all students who major in Voice or Violin. For outline of course with major in music see page 106.

A minor shall consist of fifteen hours including five hours of Theoretical Music and ten hours of Applied Music.

All music credited as Major or Minor toward the A.B. degree shall be of the Freshman grade or above, as outlined elsewhere in the catalog.

#### PREPARATORY DEPARTMENT

Beginners in music have always been taken as students in the School of Music. This department is designed to prepare pupils from the very first grades up to the regular graduating courses of the School. Pupils who have been prepared in this department are not required to pass an examination to enter Freshman in any course of the School, but are advanced as the teacher sees fit. Special rate for pupils who enter this department from the Public Schools. For rate, which includes the matriculation fee, see page 110.

#### SPECIAL STUDENTS

Students not wishing to enter any of the courses leading to a diploma are entered as Special Students and are not required to follow the prescribed courses, but are given systematic work in whatever musical study they take up.

#### THEORY, HARMONY AND COUNTERPOINT

Otterbein offers an unusually well arranged and thorough course in Theory. From the very beginning in Ear Training, Sight Singing and the Elements of Harmony up to the highest forms of Harmony, Counterpoint, Musical Form and Composition, the student is taught those principles which make for the development of his perception of true musical realization.

History of Music is a requirement in each course of study.



## ORGAN

With the constantly growing number of organs which are being placed in churches as well as many other public places, comes the insistent demand for trained players who have more than a passing acquaintance with the "King of Instruments" and its possibilities.

Prospective organ students must first complete the equivalent of one year and a half of regular work in the course of study for piano. (See page 101.)

Otterbein offers as good facilities for organ study as can be secured anywhere.  
(See prices for instruction and practice under "Tuition" on pages 111 and 112.)

## PIANOFORTE

The course of study with piano as the major, outlines a period of four years with the Diploma of the School of Music on completion.

To secure the Degree of Bachelor of Music the candidate must complete one year's work in his major study in addition to the above-mentioned course. For other requirements for both courses, see the outline of courses of study on Pianoforte on pages 101 and 102. The Degree of Bachelor of Music carries with it as one of its requirements the completion of a first-class high school curriculum, besides the following academic courses:

Bible .....	6 hours
English .....	12 hours
Logic .....	3 hours
Psychology .....	3 hours
Physical Education.....	4 hours
College Electives.....	23 hours
	20 hours
	<hr/> 48 hours

## ENTRANCE EXAMINATION

All students of Pianoforte wishing to enter the course leading to graduation shall be required to pass an informal examination for admission to the course. Students wishing advanced standing must likewise pass an examination admitting them to the desired standing.

The examination for Freshman standing shall show satisfactory knowledge in elementary training, fundamental technique, rhythmic sense, scales and arpeggios; the candidate must be prepared to play any one of a self-selected list of three studies or pieces, which shall include one easy sonatine from Kuhlau or Clementi, one of the easier Czerny or Bach studies, and one classic or modern selection of comparative grade. The latter should be memorized.

## SCOPE OF COURSES OF STUDY FOR PIANO

The following courses are designed for the average pupil, and are simply models to give a general idea of the work required by the School in a course covering four or five years' work leading to the graduate or post-graduate diplomas. The time in years as laid down in the courses is not a hard and fast schedule, for there are some talented pupils who can take several years' work in one, and on the other hand there are pupils who can scarcely get out one years work satisfactorily in the allotted time.

## PIANO

## FRESHMAN YEAR

Piano—Two lessons per week.	Theory and Ear Training.
	COURSE
Technic.	Heller, Studies of Expression,
Concone, op. 30.	Selected.
Czerny, op. 299—Books I, II and III.	Mozart Sonatas—(Easy)
Bach—Two part Inventions.	Pieces of like grade—mem-
Haydn Sonatas, Selected.	orized



## OTTERBEIN COLLEGE

## SOPHOMORE YEAR

Piano—Two lessons per week.	Theory and Elements of Harmony I.
Solfeggio.	Duets.

## COURSE

Tauzig Daily Studies.	Mendelssohn—Songs without words.
Czerny, op. 299—Finished.	Beethoven Sonatas (Easy).
Czerny, op. 834—Book I.	Pieces of like grade—memorized.
Bach—Three part Inventions.	
Mozart Sonatas—(Difficult).	

## JUNIOR YEAR

Piano—Two lessons per week.	Choral Training.
Harmony, II.	Piano Quartet.

## COURSE

Tauzig Daily Studies, Finished.	Bach—Well Tempered Clavicorn—Book I.
Cramer—Buelow—50 studies complete.	Beethoven Sonatas—(Selected). Book I.
Moscheles, op. 70.	Pieces of like grade—memorized.
Czerny, op. 834, Book II.	

## SENIOR YEAR

Piano—Two lessons per week.	* History of Music.
Piano Quartet.	Counterpoint, I.

## COURSE

Czerny, op. 740.	Chopin Compositions (Selected).
Clementi—Tauzig—Gradus Ad Parnassum.	Bach—Well Tempered Clavicorn—Book II.
Repertoire work from Classic and Modern Works for Piano.	Beethoven Sonatas—(Difficult). Book II.

## POST GRADUATE FOR DEGREE OF BACHELOR OF MUSIC

Piano—Two lessons per week.	in the School—One lesson per week.
Voice—Violin, Organ, or any other instrument taught	Counterpoint, II.

---

\* May be taken in either Senior or Junior year.

## COURSE

Bach—English and French suites.	bert, Rubenstein, Greig, Brahms, etc.
Handel—Suites—(Selected).	Repertoire work in the most
Henselt—Etudes, op. 7.	difficult compositions of
Chopin—Etudes.	Classic and Modern
Liszt—Concert Etudes.	Writers. Concertos with
Solo works from Weber,	Piano or orchestra ac-
Chopin, Schuman, Schu-	companiment.

## VOICE—THE ART OF SINGING

Based upon psychological as well as physical effort in tone production, and psychological interpretation of song. It is almost impossible to give a definite outline of the course of study followed in the art of singing. Our plan is to adapt instruction to the personal need of each pupil, hence the following outline is necessarily only tentative.

## FRESHMAN YEAR

Theory and Ear Training.	
Voice—Two lessons per week.	Piano.

## COURSE

Voice placing and pure tone production through correct use of the breath. The Italian vowels and technical exercises by dictation. Selected song studies. Easy songs by English and American composers. Diction and interpretation.

## SOPHOMORE YEAR

Voice—Two lessons per week.	Theory and Elements of Harmony.
Solfeggio.	Piano.

## COURSE

Development of tone, voice extension, breath control. Scales and arpeggio. Selected song studies. American, English and Italian songs. German lieder. Diction and interpretation.

## JUNIOR YEAR

Voice—Two lessons per week.	Harmony.
	History of Music.



## OTTERBEIN COLLEGE

## COURSE

Study in tone color. Particular attention to rhythm and phrasing. More difficult exercises in vocal technic and song studies. Modern and classic songs including oratorios and church solos. Diction and interpretation.

## SENIOR YEAR

Voice—Two lessons per week.

\*History of Music.  
Counterpoint, I.

## COURSE

Advanced study of tone development, voice placing and breathing. Continuation of technical and interpretation development.

## POST GRADUATE FOR DEGREE OF BACHELOR OF MUSIC

Voice—Two lessons per week.

Piano, Violin, Organ, or any  
other instrument taught

in the School—One lesson  
per week.

Counterpoint, II.

## COURSE

Study is largely repertoire, and interpretation. Classics and operas of the various schools. The most difficult songs and arias. Ability to sing in at least two foreign languages. Recital.

## VIOLIN DEPARTMENT

The course in Violin includes works selected from the following, although works of equal importance may be added or substituted for those here given.

The amount of work required before entering Freshman year is as follows:

Fundamental technical exercises, including scales through two octaves, studies from violin methods of L. Schubert, Kobman, deBeriot, Dancla, Hohman, op. 25, Books I and II, Kayser, op. 20, Book I.

---

\* History of Music may be taken in either Senior or Junior year. Arias and cavatinas from French, Italian and German operas. More difficult songs, from the classic writers, Brahms, Schubert, Beethoven, etc. Recital at discretion of head of department.

## FRESHMAN YEAR

Violin—Twice a week. Solfeggio.  
Theory. Piano.  
Ear Training.

## COURSE

Technic, studies from Kayser, op. 20, Book II; Hohman, op. 25, Book III; Sevcik, op. 7; Sitt, op. 32, Book III; Dont, op. 38. Easy pieces.

## SOPHOMORE YEAR

Violin—Twice a week. Elements of Harmony.  
Theory. Ensemble.  
Piano.

## COURSE

Left hand technic through three octaves in scales, arpeggios, double stops, Sevcik, op. 1, Part I; Hohman, op. 51, Book III; Kayser, op. 20, Book III; Dont, op. 37; Hermann double stopping, Book I; Sevcik, op. 8; Kreutzer Etudes, first half; solos and duets of corresponding difficulty.

## JUNIOR YEAR

Violin—Twice a week. Trio or Quartette.  
Harmony. Orchestra.

## COURSE

Sevcik Violin Technic, op. 1, Part III; Kreutzer Etudes; Fiorillo 36 Etudes; Maras, op. 36, Books II and III; Dancla, op. 73; Rode 24, caprices, sonatas, compositions of like grade.

## SENIOR YEAR

Violin—Twice a week. Orchestra.  
History of Music. Counterpoint, I.

## COURSE

Sevcik Violin Technic, op. 1, Part IV, with review of Parts I, II, and III; Rovelli, 12 caprices; Gaviniès 24 studies; Dont, op. 35; Beethoven sonatas, repertoire.

## POST GRADUATE FOR DEGREE OF BACHELOR OF MUSIC

Review and thorough training of technic necessary for classical and modern literature for violin. The student must be well advanced in ensemble and solo work.

Counterpoint, II.

## COURSE

Wieniawski, op. 10 and 18; Vieuxtemps, op. 16; Paganini, 24 caprices; Bach, 6 sonatas for violin alone, concertos, repertoire.



# OTTERBEIN COLLEGE

## OUTLINE OF COURSE IN LIBERAL ARTS WITH A MAJOR IN MUSIC

### FRESHMAN YEAR

<i>First Semester</i>	<i>Hours</i>	<i>Second Semester</i>	<i>Hours</i>
English 217 .....	3	English 218 .....	3
French or German or Spanish .....	4	French or German or Spanish .....	4
Science—Choice Biology or Chemistry...	4	Science—Choice Biology or Chemistry...	4
Physical Education .....	1	Physical Education .....	1
Music .....	4	Music .....	4

### SOPHOMORE YEAR

<i>First Semester</i>	<i>Hours</i>	<i>Second Semester</i>	<i>Hours</i>
Bible 61 .....	3	Bible 62 .....	3
History—Choice .....	3	History—Choice .....	3
Literature—Choice .....	4	Literature .....	4
Physical Education .....	1	Physical Education .....	1
Music .....	4	Music .....	4

### JUNIOR YEAR

<i>First Semester</i>	<i>Hours</i>	<i>Second Semester</i>	<i>Hours</i>
Greek, Latin or Mathe- matics .....	3	Greek, Latin or Mathe- matics .....	4
Philosophy of Education..	3	Philosophy of Education..	3
Public Speaking 581.....	2	Public Speaking 582.....	2
Electives .....	2	Electives .....	2
Music .....	4	Music .....	4

### SENIOR YEAR

<i>First Semester</i>	<i>Hours</i>	<i>Second Semester</i>	<i>Hours</i>
Electives .....	12	Electives .....	12
Music .....	4	Music .....	4

## PUBLIC SCHOOL MUSIC TRAINING COURSE

This course is designed for students who wish to fit themselves for the teaching and supervision of music in the public and private schools of the United States from the Kindergarten through the High School. Students who enter training for music supervision must be graduates of a recognized four year high school, or have the equivalent training. In addition the applicant should have special musical ability, a pleasing voice and a good ear.

Students taking this course will be required to belong to an Otterbein Musical Organization (Choir, Glee Club, Orchestra), for at least two years and should be able to appear creditably in student recitals (Piano, Voice, Orchestral Instrument). The State Department of Public Instruction in Ohio requires four years of training.

Upon completion of the course the student will receive the degree of Bachelor of Public School Music from Otterbein College and the regular Provisional State Certificate from the State Department.

#### FOUR YEAR COURSE IN PUBLIC SCHOOL MUSIC

##### FRESHMAN YEAR

<i>First Semester</i>	<i>Hours</i>	<i>Second Semester</i>	<i>Hours</i>
Voice .....	1	Voice .....	1
Piano .....	2	Piano .....	2
Notation and Terminology (P.S.M. 761) .....	1	Notation and Terminology (P.S.M. 762) .....	1
Sight Singing—Ear Train- ing (769) .....	2	Sight Singing—Ear Train- ing (770) .....	2
English Composition (217) .....	3	English Composition (218) .....	3
Science—Choice .....	4	Science—Choice .....	4
Physical Education .....	1	Physical Education .....	1
Harmony (741) .....	2	Harmony (742) .....	2
<hr/> Total .....	<hr/> 16	<hr/> Total .....	<hr/> 16

##### SOPHOMORE YEAR

<i>First Semester</i>	<i>Hours</i>	<i>Second Semester</i>	<i>Hours</i>
Voice .....	2	Voice .....	2
Piano .....	1	Piano .....	1
Voice of the Child (P.S.M. 763) .....	2	Conducting— (P.S.M. 764) .....	2
Harmony (745) .....	2	Harmony (746) .....	2
Appreciation (757) .....	1	Appreciation (758) .....	1
Advanced Sight Singing— Ear Training (775)....	2	Advanced Sight Singing— Ear Training (776)....	2
English Literature—Choice .....	3	English Literature—Choice .....	3
Public Speaking (581)....	2	Public Speaking (582)....	2
Folk Games .....	1	Folk Games .....	1
<hr/> Total .....	<hr/> 16	<hr/> Total .....	<hr/> 16



# OTTERBEIN COLLEGE

## JUNIOR YEAR

<i>First Semester</i>	<i>Hours</i>	<i>Second Semester</i>	<i>Hours</i>
*Music Elective (applied)	2	*Music Elective (applied)	2
String Class (729).....	1	String Class (730) .....	1
Counterpoint (749) .....	2	Counterpoint (750) .....	2
History of Music (773)....	2	History of Music (774)..	2
Methods (P.S.M. 765 Pri-		Observation and Participa-	
mary and Intermediate		tion (1932) .....	3
Grades) .....	4	Principles of Education	
Educational Psychology		(190) .....	3
(186) .....	3	College Elective (History	
College Elective (History		—Sociology) .....	3
—Sociology) .....	3		
Total .....	17	Total .....	16

## SENIOR YEAR

<i>First Semester</i>	<i>Hours</i>	<i>Second Semester</i>	<i>Hours</i>
*Music Elective .....	2	*Music Elective .....	2
Wood Wind Instrument		Brass Instrument Class	
Class (789) .....	1	(790) .....	1
Counterpoint Form and		Counterpoint, Form and	
Analysis (753) .....	2	Analysis (754) .....	2
Methods (P.S.M. 767		The Problems of Super-	
Junior and Senior H. S.)	3	visor (P.S.M. 768).....	2
Student Teaching (197)..	2	Student Teaching (198)..	2
Administration (187) ....	3	Education Elective .....	3
*College Elective .....	3	*College Elective .....	3
Total .....	16	Total .....	15

NOTE—Following is a brief description of the School of Music work as it is outlined in the preceding course:

SCHOOL MUSIC 761-762—A study of Notation and Terminology which will help to form correct habits of notation and clarify thought and speech in defining and explaining musical terms.

SCHOOL MUSIC 763—A study of the voice of the child and application of principles involved in gaining a repertoire of children's songs.

\* Electives may be chosen with the help of Director and Supervisor of School of Music.

SCHOOL MUSIC 764—This course is intended primarily for those majoring in Public School Music, but any music student who expects to direct musical organizations would find it to be of unusual value and may be admitted to the class.

SCHOOL MUSIC 765—General Survey and establishment of aims and ideals pertaining to all grades. Problems of 1st, 2d, 3d grades. These problems include song singing, listening lessons, monotones, observation work, ear training, beginning sight-reading and a study of materials—with numerous other problems. Problems 4th, 5th, 6th grades. Continuation of work of previous grades.

SCHOOL MUSIC 767—Problems of Junior and Senior High. First a study of boys and girls of these grades and how to keep them interested in music. Then the specific problems of chorus work, care of the changing voice. Appreciation, Theory and Beginning Harmony, Glee Clubs, Orchestra and Materials.

SCHOOL MUSIC 768—The ideal Supervisor, his relation to the officers of the school, to the teachers, the pupils and the community at large.

### HISTORY OF MUSIC

The aim is to give the student a survey of the entire field of musical development as presented in the light of recent research.

Lives and ideals of composers are studied with the idea of obtaining a keen, sympathetic understanding of their works.

### SCHEDULE AND COURSE NUMBERS

Piano—Grabill .....	701-702	Violin—Hopkins .....	725-726
Piano—Baker .....	705-706	Piano—Barngrover ..	727-728
Piano—Harris .....	711-712	Violin—Barngrover ..	729-730
Organ—Grabill .....	713-714	Mandolin—	
Organ—Harris .....	715-716	Barngrover .....	733-734
Voice—Spessard .....	717-718	Cello—Spessard .....	737-738
Glee Club—Spessard..	719-720	Wind Instruments	
Voice—Starkey .....	721-722	—Hirt .....	789-790



Harmony I—Harris .....	745-746—1:00	T., Th.
Harmony II—Harris .....	747-748—1:00	M., W.
Counterpoint I—Grabill .....	749-750—1:00	T., Th.
Counterpoint II—Grabill .....	753-754—1:00	M., W.
Musical Appreciation—Starkey .....	757-758—8:30	W.
Public School Music—Starkey .....	761-10:30	W.
Public School Music II—Starkey.....	763-764—1:00	T., Th.
Public School Music III—Starkey.....	765—10:30	M., T., Th., F.
Public School Music IV—Starkey.....	767-768—1:00	T., Th.
Solfeggio I—Starkey .....	769-770—8:30	T., Th.
Music History—Barngrover .....	773-774—2:00	M., W.
Solfeggio II—Starkey .....	775-776—9:30	T., Th.
Wind Instruments—Hirt .....	789-790—2:00	T.
String Class—Barngrover .....	To be arranged	
Band—Spessard .....	791-792	

### LOW RATES FOR CHILDREN'S COURSES

Otterbein College offers classes in the lower public school grades. These classes are taught by experienced teachers of the School of Music using the most attractive and successful of the new methods of class instruction. In classes of ten or more each pupil will pay 25 cents a lesson. Pupils will be registered individually at the opening of the Public Schools by the teachers in charge of the classes.

### MINIMUM FEE FOR PUBLIC SCHOOL MUSIC COURSE

A minimum fee of \$137.50 a semester will cover all instructional costs in this course, unless the pupil wishes to study with the heads of departments in applied music. This minimum fee does not include matriculation, laboratory fees, or piano rentals, but does include all required academic subjects. Fee for additional hours will be charged if a student registers for more than 9 hours of academic subjects.

## EXPENSES

If the pupil studies music alone, the following table will give an approximate idea of the necessary expenses for a year of thirty-six weeks:

Tuition—Piano (Vocal or Violin or Organ),		
Harmony and History of Music.....	\$90.00 to	\$225.00
Board and room (light and heat furnished).....	210.00 to	235.00
Books and incidentals .....	25.00 to	75.00
Piano or Organ Rent .....	15.00 to	40.00
Total .....	\$340.00 to	\$575.00

## PRIVATE LESSONS PER SEMESTER

## PIANO (REGULAR)

From the Director, two half-hour lessons per week.....	\$60.00
From the Director, one-half hour per week.....	35.00
From Assistants, two half-hour lessons per week.....	45.00
From Assistant, one-half hour per week.....	30.00
PIANO—VOICE OR VIOLIN—PREPARATORY JUNIOR AND SENIOR	

## HIGH SCHOOL STUDENTS

From Assistants—Matriculation fee included

Two half-hours per week .....	\$28.00
One half-hour per week.....	18.00

## PIANO OR VIOLIN—GRADE SCHOOL STUDENTS

From Assistants—Matriculation fee included

Two half-hours per week.....	\$22.00
One half-hour per week.....	12.00

## PIPE ORGAN

One half-hour per week.....	\$35.00
-----------------------------	---------

## VOICE

From Head of Vocal Department, two half-hours per week.	\$50.00
From Head of Vocal Department, one thirty-minute lesson per week .....	35.00
From Assistant, two half-hours per week.....	45.00
From Assistant, one half-hour per week.....	30.00

## VIOLIN (BARNGROVER)

Two half-hours per week.....	\$45.00
One thirty-minute lesson per week.....	30.00



## OTTERBEIN COLLEGE

## VIOLIN (HOPKINS)

One hour per week (Credit two hours).....	\$60.00
One half-hour (Credit one hour).....	35.00

## WIND INSTRUMENTS—(HIRT)

One hour per week.....	\$36.00
One half-hour per week.....	18.00

## CLASS LESSONS PER SEMESTER

Harmony (two hours per week).....	\$16.00
Counterpoint (two hours per week).....	16.00
Musical History (two hours per week).....	16.00
Sight Singing (two hours per week).....	6.00
Appreciation of Music (one hour per week).....	11.00
Wind Instruments, Violin, or Banjo-Mandolin Class (class of 8) (one hour).....	6.00
Women's or Men's Glee Club (one hour) (for year).....	5.00
Band (one hour) .....	3.00

## PUBLIC SCHOOL MUSIC

No. 761-762 .....	\$11.00
No. 763-764 .....	16.00
No. 765 (4 hours) .....	28.00
No. 767-768 .....	16.00

## RENT OF ORGAN PER SEMESTER

One hour per day.....	\$20.00
-----------------------	---------

## RENT OF PRACTICE PIANO PER SEMESTER

One hour per day.....	\$5.00
Each additional hour.....	5.00

Those taking less than one semester's work will be charged five per cent more than regular rates per single lesson.

For further information, address

GLENN GRANT GRABILL, *Director.*

SCHOOL OF ART

FACULTY

WALTER GILLAN CLIPPINGER, B.D., D.D., LL.D.

PRESIDENT

MARION L. THOMPSON, B.Sc., M.A.

DIRECTOR

*Representative and Decorative Art*



## SCHOOL OF ART

### GENERAL STATEMENT

The aim of the school is to provide students with a sound technical training in the various branches of the Fine and Applied Arts to teach them how to put this training to a practical use in the creation of a work of art, to develop them individually, with an appreciation for the cultural side of life and love of the beautiful, and to encourage them to seek the highest degree of excellence, which leads to a wider and nobler view of life.

A major in Fine Arts, leading to the degree of Bachelor of Arts, requires not less than 24 semester hours and not more than 32 semester hours. A minor shall consist of 15 semester hours.

Outline of course in Liberal Arts with a major in Fine Arts.

#### FRESHMAN YEAR

<i>First Semester</i>	<i>Hours</i>	<i>Second Semester</i>	<i>Hours</i>
English Composition.....	3	English Composition.....	3
Orientation .....	1	Physical Education.....	1
Physical Education.....	1	Greek, Latin or Math..	3 or 4
Greek, Latin or Math..	3 or 4	Science .....	4
Science .....	4	Art .....	4
Art .....	4		
	<hr/>		<hr/>
	16 or 17		15 or 16

#### SOPHOMORE YEAR

<i>First Semester</i>	<i>Hours</i>	<i>Second Semester</i>	<i>Hours</i>
Bible .....	3	Bible .....	3
Modern Language.....	4	Modern Language.....	4
Physical Education.....	1	Physical Education.....	1
English Literature.....	3	English Literature.....	3
Art .....	4	Art .....	4
	<hr/>		<hr/>
	15		15

## JUNIOR YEAR

<i>First Semester</i>	<i>Hours</i>	<i>Second Semester</i>	<i>Hours</i>
Social Science.....	3	Social Science.....	3
Public Speaking.....	2	Public Speaking.....	2
Electives .....	6	Electives .....	6
Art .....	4	Art .....	4
	<hr/> 15		<hr/> 15

## SENIOR YEAR

<i>First Semester</i>	<i>Hours</i>	<i>Second Semester</i>	<i>Hours</i>
Philosophy or Education...	3	Philosophy or Education...	3
Electives .....	10	Electives .....	10
Art .....	4	Art .....	4
	<hr/> 17		<hr/> 17

## OUTLINE OF COURSES

Odd-numbered courses are given first semester.

Even-numbered courses are given second semester.

Prerequisites and number of hours to be arranged by the Director.

- 1— 2 Elementary Freehand Drawing.  
Two two-hour laboratory periods. 2 hours
- 3— 4 Advanced Freehand Drawing.  
Two three-hour laboratory periods. 2 hours
- 5— 6 Drawing from Life (Portrait and Costumed  
Figure).  
Two three-hour laboratory periods. 2 hours
- 7— 8 Elementary Design.  
Two two-hour laboratory periods. 2 hours
- 9—10 Advanced Design.  
Two three-hour laboratory periods. 2 hours
- 11—12 Commercial Art.  
Two three-hour laboratory periods. 2 hours
- 13—14 Elementary Water Color Painting.  
Two three-hour laboratory periods. 2 hours



15—16	Advanced Water Color Painting. Two three-hour laboratory periods.	2 hours
17—18	Beginning Oil Painting. Two three-hour laboratory periods.	2 hours
19—20	Advanced Oil Painting. Two three-hour laboratory periods.	2 hours
21—22	Portrait Painting. Two three-hour laboratory periods.	2 hours
23—24	Clay Modelling. Two three-hour laboratory periods.	2 hours
25—26	History of Art. Monday—3 o'clock. One lecture each week (two semesters).	2 hours
27—28	Costume Design (Home Economics requirement). One three-hour laboratory period.	2 hours
29—30	Interior Decoration (Home Economics requirement). One three-hour laboratory period.	2 hours
31—32	Methods in Teacher Training.	
35—36	Additional or Advanced Courses.	
37—38	Additional or Advanced Courses.	

### TUITION FOR ART COURSES

1 hour .....	\$ 8.00
2 hours .....	15.00
3 or more hours.....per hour	7.00

Each student will be required to pay a laboratory fee, the amount to be determined by the work done.

Special courses for special students to be arranged.

## HONOR STUDENTS

The following is a list of Seniors who earned scholastic honors at graduation. Those receiving magna cum laude made a point average of at least 2.6 for the entire course; those receiving cum laude made a point average of at least 2.3 for the entire course.

## MAGNA CUM LAUDE

Clippinger, Charlotte Louise.....	Westerville
Engle, Bonita A.....	Westerville
Hanson, Dorothy C.....	Westerville
Miller, Dorothy V.....	Coshocton
Norris, Marianne G.....	Westerville
Richer, Evelyn A.....	LaGrange, Ind.

## CUM LAUDE

Bowen, Thomas Roy.....	Canal Winchester
Burtner, Elmer Edwin.....	Westerville
Cornell, Merriss .....	Westerville
Shively, Mary Grace.....	Kyoto, Japan
Smith, Edna .....	Westerville
Smith, John Alan.....	Westerville
Zechar, Mary Elizabeth.....	Westerville

The following is a list of students who have earned honors for the year 1932-33 by making a point average of 2.3 or more.

## SENIORS

Bowen, Thomas Roy.....	Canal Winchester
Burtner, Elmer Edwin.....	Westerville
Clippinger, Charlotte Louise.....	Westerville
Engle, Bonita A.....	Westerville
Hanson, Dorothy C.....	Westerville
Harrold, Margaret Grace.....	Youngwood, Pa.
Henry, Donald James.....	Westerville
Holtshouse, Annabelle Ernestine.....	Bucyrus
Hoover, Keith Stasel.....	Westerville
Horne, Wilma Marguerite.....	Mount Vernon
Miller, Dorothy V.....	Coshocton
Norris, Marianne G.....	Westerville
Richer, Evelyn A.....	LaGrange, Ind.
Rosselot, La Velle.....	Westerville
Shively, Frances Alice.....	Kyoto, Japan
Shively, John Ressler.....	Kyoto, Japan
Shively, Mary Grace.....	Kyoto, Japan



## OTTERBEIN COLLEGE

Smith, Edna .....	Westerville
Smith, John Alan.....	Westerville
Zechar, Mary Elizabeth.....	Westerville

## JUNIORS

Deever, Philip Otterbein.....	Dayton
Forwood, Hazel Victoria.....	Springfield, Ill.
Gibson, Ruth Elizabeth.....	Westerville
Grove, Frances Stover.....	Hagerstown, Md.
Jordan, Erma Alice.....	Dayton
Shipley, Robert Everett.....	Dayton
Smith, Thomas L.....	Dunlo, Pa.
Tryon, Sager .....	Canton

## SOPHOMORES

Bennert, Elsie Mary.....	Vandalia
Burtner, Margaret .....	Westerville
Deever, John Wilkin.....	Dayton
Drummond, Beatrice Irene.....	Barberton
Haines, Carol .....	Dayton
McLeod, Ruth .....	Westerville
Mickle, Jennie Elizabeth.....	Johnstown, Pa.
Miller, Verle Archie.....	Strasburg
Otsuki, Mary Ayako.....	Chicago, Ill.
Owens, Ruth Evelyn.....	Westerville
Platz, Harold Higley.....	Youngsville, Pa.
Van Sickel, Gertrude Arlene.....	Cardington
Wiseman, Evalyn A.....	Mount Gilead

## FRESHMEN

Babler, Wayne Elroy.....	Coshocton
Bachtell, Rhea Mae.....	Portage, Pa.
Brehm, Anne .....	Hatboro, Pa.
Clymer, Jessie Pauline.....	Galena
Conoway, Dorothy .....	Cardington
Cook, John Merton.....	Basil
Friar, Earl .....	Gibsonburg
Little, Esther Elizabeth.....	Westerville
Medert, Anna Louise.....	Chillicothe
Nichols, Evelyn Eugenia.....	Hamilton
Nichols, Harold Emerson.....	Hamilton
Parsons, Dorothy Irene.....	Westerville
Shaw, Charles Gordon.....	Lima
Shoop, Kathryn Lucille.....	Canton, China
Van Sickel, Martha Hortense.....	Fisher, Ill

## DEGREES CONFERRED IN 1933

## BACHELOR OF ARTS

Allaman, Richard M.....	Dayton
Appleton, John George.....	Dayton
Benton, Brantford B.....	Reynoldsburg
Bowell, Daniel Charles.....	Dayton
Bowen, Thomas Roy.....	Canal Winchester
Breden, Vivian Marie.....	Westerville
Brubaker, Arthur E.....	Jamestown, N. Y.
Burtner, Elmer Edwin.....	Westerville
Clippinger, Charlotte Louise.....	Westerville
Corkwell, Florence Charlene.....	Mount Sterling
Dieter, Alma Elizabeth.....	Bradford, Pa.
Engle, Bonita A.....	Westerville
Evans, Benjamin Dale.....	Canton
Falstick, Kenneth Myron.....	Johnstown, Pa.
Finley, Marjorie Alice.....	Millersburg
Francis, Arthur G.....	Scranton, Pa.
Fritz, Lois Naomi.....	Lima
Gillman, Olive R.....	Johnstown, Pa.
Hanson, Dorothy Clement.....	Westerville
Henry, Zeller R.....	Germantown
Horne, Wilma Marguerite.....	Mount Vernon
Kapper, Helen B.....	Canton
Kelser, Pauline L.....	Westerville
Lane, Robert Franklin.....	Columbus
Leichty, Helen M.....	Springboro
Martin, Harold C.....	Lancaster
Miller, Dorothy V.....	Coshocton
Moore, Margaret Lucille.....	Westerville
Nichols, L. Blanche.....	Mount Gilead
Norris, Marianne G.....	Westerville
Offenhauer, Geraldine.....	Lima
Otis, Lehman Eby.....	Elizabethtown, Pa.
Parsons, Alice.....	Westerville
Reid, Myrtle Florence.....	Circleville
Rhodeback, Leroy J.....	Johnstown
Rhodes, Ruth Maxine.....	Bryan
Richer, Evelyn A.....	LaGrange, Ind.
Roose, Dale Fox.....	Wilkinsburg, Pa.
Rosselot, Eathel LaVelle.....	Westerville
Samuel, Frank E.....	Westerville
Schott, John Milton.....	Westerville
Shively, Frances Alice.....	Kyoto, Japan
Shively, John Ressler.....	Kyoto, Japan
Shively, Mary Grace.....	Kyoto, Japan
Smith, Edna.....	Westerville



## OTTERBEIN COLLEGE

Smith, John Alan.....	Westerville
Taylor, Vernon E.....	Middletown
Widdoes, Ida Mae.....	Westerville
Wilson, Hortense Elizabeth.....	Sunbury

## BACHELOR OF SCIENCE

Andrews, Samuel Eugene.....	Dayton
Cornell, Merriss .....	Westerville
Feightner, Beulah M.....	Canton
Harrold, Margaret Grace.....	Youngwood, Pa.
Heil, Donald W.....	Westerville
Henry, Donald J.....	Westerville
Hoover, Keith S.....	Westerville
McFeeley, Gerald A.....	Windber, Pa.
Meyers, Donald Henry.....	Johnstown, Pa.
Short, Robert M.....	Westerville
Shreiner, Virgil Edward.....	Barberton
Snow, Dempsey Jacob.....	Johnstown, Pa.
Supinger, Forrest Clayton.....	Payne
Topolosky, Harry Wolfe.....	Columbus
Zechar, Mary Elizabeth.....	Westerville

## BACHELOR OF PUBLIC SCHOOL MUSIC

Gillman, Olive R.....	Johnstown, Pa.
Greenbaum, Opal Grace.....	Plain City
Holtshouse, Ernestine .....	Bucyrus
Moomaw, Rhea Geneva.....	Sugarcreek
Peterson, Klahr Andrew.....	Youngsville, Pa.

## DIPLOMAS IN MUSIC

*(Voice)*

Greenbaum, Opal Grace.....	Plain City
Moomaw, Rhea Geneva.....	Sugarcreek
Peterson, Klahr Andrew.....	Youngsville, Pa.

## HONORARY DEGREES

## DOCTOR OF DIVINITY

Rev. Carmi O. Callender, A.B., B.D.
Pastor, Broadway United Brethren Church, Toledo, Ohio.
Rev. Walter E. Roush, A.B., B.D., A.M.
Professor of Old Testament Language and Interpretation,
Bonebrake Theological Seminary, Dayton, Ohio.

## DOCTOR OF HUMANE LETTERS

President William E. Wickenden, B.S., D. Eng., D.Sc., LL.D.,
Case School of Applied Science, Cleveland, Ohio.

## COLLEGE YEAR 1933-34

## SENIORS

Axline, Kenneth Bope.....	Westerville
Barnes, Dwight Lambert.....	Westerville
Barnes, Robert Owen.....	Westerville
Bennett, William Clyde.....	Altoona, Pa.
Botts, Charles Wesley.....	Latrobe, Pa.
Bradshaw, George L.....	Columbus
Bremer, Marion Louise.....	Portsmouth
Burdge, Edna Lillian.....	Canton
Bush, Elwood Stephen.....	Newport, Ky.
Campbell, Helen G.....	Galena
Capehart, Paul Roland.....	Parkersburg, W. Va.
Croy, Elsie Elizabeth.....	Dayton
Deever, Philip Otterbein.....	Dayton
Dick, Alice Mae.....	North Robinson
Dicus, Ruth Aileen.....	Findlay
Dipert, Martha Ellen.....	Findlay
Duckwall, Evelyn Lenore.....	Clayton
Evans, Robert Franklin.....	Vienna, W. Va.
Fetter, Richard Doyle.....	Tiro
Forwood, Hazel Victoria.....	Springfield, Ill.
Furniss, Henry L.....	Westerville
Garrett, Russell.....	Dayton
Gibson, Ruth Elizabeth.....	Westerville
Glover, Harold Curtis.....	Westerville
Glover, Hugh Chester.....	Westerville
Grabill, Glenn Grant, Jr.....	Westerville
Grove, Frances Stover.....	Hagerstown, Md.
Harrold, Ronald P.....	Greensburg, Pa.
Harter, Byron Eugene.....	New Madison
Havens, Ruth Elva.....	Burgoon
Heck, Eleanor Elizabeth.....	Dayton
Henry, Helen Ruth.....	Connellsville, Pa.
Hinton, Virgil Otterbein.....	Canton
Hotchkiss, Lawrence Otis.....	Saegertown, Pa.
Huhn, Charles Roger.....	Westerville
Jordan, Erma Alice.....	Dayton
King, Juliana.....	Scottdale, Pa.
Koons, Arthur Ferris.....	Westerville
Kuhns, Mary S.....	Greensburg, Pa.
Lambert, Ruth Elizabeth.....	Rich Hill, Mo.
Lawther, William Dean.....	Alliance
Leung, Chi Kwong.....	Siu Lam, China
Little, Wendell S.....	Westerville
Moore, Lucille Eleanor.....	Willard
Morrison, Wilbur Hurst.....	Ashville



Murphy, John Richard.....	Burgoon
Nagel, Edward John.....	Canton
Norris, Frederick Hamilton.....	Westerville
Noyes, Arlene Eleanor.....	Buffalo, N. Y.
Predmore, Ruthella Marie.....	Kenton
Riegel, Gladys Marie.....	Dayton
Robinson, George Merlin.....	Wooster
Rohrer, Dorothea Baker.....	Hagerstown, Md.
Saul, Francis W.....	Camp Hill, Pa.
Schick, Raymond Budd.....	Westerville
Schott, Paul Allen.....	Canton
Shauck, Zelma Lenore.....	Newark
Shipley, Robert Everett.....	Dayton
Smelker, Merlin O.....	Westerville
Smith, Thomas L.....	Dunlo, Pa.
Spitler, William Howard.....	Hoytville
Sporck, Howard Albert.....	Yukon, Pa.
Stuart, Walter Eugene.....	Rockbridge
Truxal, Sarah Grace.....	Wilkinsburg, Pa.
Tryon, Sager, Jr.....	Bowdil
Van Sickle, Helen Nadine.....	Fisher, Ill.
Wagner, Eleanor Elizabeth.....	Lakewood
Weaver, Clarence E.....	New Paris, Pa.
Weaver, John Jacob.....	Dayton
Wood, Burdette A.....	Garrettsville
Worstell, Karl Robert.....	Bloomdale
Young, Parker Cyrus.....	Union City, Pa.

## JUNIORS

Airhart, Robert Edward.....	Canton
Albright, Robert T.....	Dayton
Ashcraft, Clara Elaine.....	Dayton
Barnes, Mary Elizabeth.....	Westerville
Barton, Ralph Kenneth.....	Navarre
Beldon, Troy.....	Lima
Bennert, Elsie Mary.....	Vandalia
Burtner, Margaret.....	Westerville
Byers, Clyde Stuart.....	Rockbridge
Carter, Evelyn.....	Lebanon
Caulker, Richard L.....	Sierra Leone, West Africa
Cox, Stewart.....	Newark
Deever, John Wilkin.....	Dayton
Edwards, James W.....	Barberton
Fisher, Harry J.....	McAlisterville, Pa.
Frease, Doris Maxine.....	Canton
Frees, Paul Willis.....	Garrettsville
Grabill, Dorothy.....	Westerville

# REGISTER OF STUDENTS

123

Haines, Carol .....	Dayton
Harsha, Helen Lucille.....	Westerville
Haueter, Glenn Richard.....	Dover
Hesselgesser, Irene Elizabeth.....	Urbana
Holmes, Robert .....	Westerville
Jackson, Lacy Ruth.....	Keyser, W. Va.
Kelly, James Oliver.....	Greensburg, Pa.
Kleinhenn, Alberta M.....	Lebanon
Krehbiel, Kathryn Erma.....	Clarence Center, N. Y.
Livingstone, Joseph Keirn.....	Johnstown, Pa.
Mickle, Jennie Elizabeth.....	Johnstown, Pa.
Miller, Verle Archie.....	Strasburg
Munden, John Robert.....	Greensburg, Pa.
Otsuki, Mary Ayako.....	Chicago, Ill.
Owens, Ruth Evelyn.....	Westerville
Parkinson, George E.....	Westerville
Peters, Floretta Mary Catherine.....	Saegerstown, Pa.
Peters, Loren Bowman.....	Logan
Peters, Sarah Louise.....	Saegerstown, Pa.
Platz, Harold Higley.....	Youngsville, Pa.
Priest, Edna Margaret.....	Westerville
Purdy, Woodrow Wilson.....	Montpelier
Riegle, Frances Evelyn.....	Arcanum
Roby, Sarah Ellen.....	New Philadelphia
Ryder, Mary Alice.....	Vandalia
Shaw, Charles Gordon.....	Lima
Stengel, Ruth Ethel.....	Buffalo, N. Y.
Taylor, Irene Marguerite.....	Keyser, W. Va.
Van Scoyoc, Martha Pauline.....	Deshler
Van Sickle, Gertrude Arlene.....	Cardington
Van Sickle, Robert William.....	Cardington
Whittington, Richard Thomas.....	Lima
Williams, Warren .....	Dayton
Wiseman, Evalyn A.....	Mt. Gilead
Womer, Mary Katherine.....	Philipsburg, Pa.

## SOPHOMORES

Adams, Lucien Kellogg.....	Westerville
Arnold, Geraldine Beatrice.....	Barberton
Baker, John Clarence, Jr.....	Barberton
Boor, Laurence Henry.....	Bowerston
Booth, Edmond Jasper.....	Newcomerstown
Bowser, Olive Marjorie.....	Westerville
Brady, Tom Erasmus.....	Miamisburg
Brehm, Anne .....	Hatboro, Pa.
Cheek, Harold Russel.....	Westerville
Clymer, Jessie Pauline.....	Galena



Coate, Irene Modena.....	Westerville
Coblentz, Ruth Marcia.....	Dayton
Cook, John Merton.....	Basil
DeWeese, Warren John.....	Dayton
Drummond, Beatrice Irene.....	Barberton
Euverard, Grace Loree.....	Westerville
French, Mildred Maxine.....	South Solon
Funk, Robert Waldo.....	Wilkinsburg, Pa.
Furniss, Robert Daniel.....	Westerville
Gantz, Jessie Hannah.....	Doylestown
Gorsuch, Jane E.....	Westerville
Harris, Kenyon Lowell.....	Arcanum
Heitz, Frank.....	Mansfield
Hohn, Wendell Albert.....	Dayton
Holland, Kenneth Marvin.....	Toledo
Hunt, Ruth Mabel.....	Rixford, Pa.
Jones, Clyde Luther.....	Baltimore
King, Alton J.....	Westerville
Lilly, Raymond Monroe.....	Hicksville
Little, Esther Elizabeth.....	Westerville
Luby, Frederick.....	Westerville
Lucas, Elroy H.....	Stout
Ludwick, Helen Imogene.....	Batavia
Medert, Anna Louise.....	Chillicothe
Mickey, Walter Weimer.....	Ligonier, Pa.
Mitchell, Richard Wendell.....	Grand Rapids, Mich.
Mitchelson, Jay Burdette.....	Westerville
Moody, Melvin Albert.....	Westerville
Moore, Kathryn Winifred.....	Westerville
Nagel, William.....	Canton
Nichols, Evelyn Eugenia.....	Hamilton
Nichols, Harold Emerson.....	Hamilton
Norris, Virginia E.....	Westerville
Oldt, Margaret Elizabeth.....	Canton, China
Parsons, Dorothy Irene.....	Westerville
Patton, Georgia.....	Hillsboro
Roush, Margaret Elizabeth.....	Parkersburg, W. Va.
Runk, Mary Katherine.....	Grand Rapids, Mich.
Schisler, Harold Thomas.....	Portsmouth
Schuesselin, Norma Eileen.....	Piqua
Scott, Harold.....	Westerville
Shatzer, Ruth Ida.....	North Canton
Shaw, Howard Landon.....	Columbus
Shoop, Kathryn Lucille.....	Canton, China
Shope, Nathaniel Hawthorne.....	Huntingdon, Pa.
Smith, Ella Barnes.....	Westerville
Snavely, Raymond Leroy.....	Massillon

Strahm, Wahnita May.....	Pickerington
Vance, George Lowell.....	Greenville
Wagner, Sarah Elizabeth.....	Cleveland
Wells, Mildred Florence.....	Lancaster
Wilson, Ronald Bruce.....	Massillon
Wolfarth, William .....	Canton
Ziegler, Samuel Redding.....	Dayton

## FRESHMEN

Alspach, Myrna Naomi.....	Westerville
Altman, Mary Louise.....	Westerville
Anderson, Bill Rogers.....	Akron
Arthur, Julia Jane.....	Westerville
Babler, Viola Lucille.....	Orangeville, Ill.
Bale, Jack Sherman.....	Westerville
Bale, William G.....	Westerville
Banner, Virginia Lee.....	Westerville
Barton, Pauline Granger.....	Sunbury
Beachler, Carol Suzanne.....	Westerville
Bell, Harold W.....	Lancaster
Beougher, Carl Edward.....	Rockbridge
Blair, Bradford Oscar.....	New Philadelphia
Blose, Maxon Henry.....	Arcanum
Bowman, Pauline Virginia.....	Germantown
Bowser, Martha Louise.....	Westerville
Breden, Robert Eston.....	Westerville
Brehm, Evelyn Wynn.....	Hathoro, Pa.
Brown, Robert Marion.....	Baltimore
Brown, Russell N.....	Spring Valley
Bungard, William Stacey.....	Johnstown, Pa.
Burdge, Dorothy Jane.....	Canton
Byers, Harold Beryl.....	Rockbridge
Coate, Curtis L. V.....	Westerville
Conoway, Dorothy .....	Cardington
Cook, Ruth Jane.....	Dayton
Davies, Harry Alfred.....	Toledo
Durfee, Erwin Giles.....	Tryonville, Pa.
Eastman, Howard Edwin.....	Belle Vernon, Pa.
Eaton, Josephine .....	Collins
Elliott, Denton Webber.....	Canal Winchester
Elliott, Foster Hamon.....	Canal Winchester
Epprecht, Edward Henry.....	Wilkinsburg, Pa.
Fidler, Florence Morgan.....	Canal Winchester
Fields, Joseph Edward.....	Bucyrus
Forwood, Gladys Maxine.....	Springfield, Ill.
Freese, Joseph Edgar.....	Powell
Gorsuch, Paul Douglas.....	Westerville



Gouin, Edward Joseph.....	West Haven, Conn.
Hance, Marian Louise.....	Westerville
Hanks, Robert Glenn.....	Rixford, Pa.
Harding, Charles Weaver.....	Worthington
Hart, Carl Robert.....	Rockford
Hedding, Jay Roy.....	Martel
Helt, Charles Franklin.....	Berlin, Pa.
Henry, Mary.....	Westerville
Hetzler, Virginia Kathryn.....	Germantown
Hillegas, Emerson Edwin.....	Fairhope, Pa.
Hummell, Dorothy Jean.....	Cleveland
Jennings, Lola Dell.....	Condit
Jones, Paul Raymond.....	Westerville
Kelser, Sara Kathryn.....	Westerville
Kuhen, William George.....	Columbus
Kundert, B. Lorena.....	Dayton
Landon, Earl Gifford.....	Westerville
Landon, Jessie N.....	Westerville
Lane, Mildred Louise.....	Westerville
Lane, Ronald Elvador.....	Middletown
Lewis, Lloyd Asbury.....	McArthur
Lloyd, Ruth Elizabeth.....	Marengo
Lohr, Ralph Revere.....	Monterey, Va.
Loucks, George Lisle.....	Canal Winchester
Lunsford, Harry Clement.....	Monterey, Va.
McEntire, Marjorie Louise.....	Buffalo, N. Y.
McLaughlin, Robert Fred.....	Lancaster
Martin, Donald Ray.....	Westerville
Mayne, Dorothea Elizabeth.....	Westerville
Mayne, Kathryn ViLouise.....	Westerville
Moomaw, Mary Margaret.....	Sugarcreek
Morrison, Ruth Adele.....	Hanover
Muskoff, Florence.....	Navarre
Murphy, Elizabeth Ann.....	Butler
Myer, Miriam Elizabeth.....	Johnstown
Newton, Katherine G.....	Charleston, W. Va.
Norris, Kathleen Adelaide.....	Westerville
Parcher, Catherine Ferne.....	Marion
Perry, Robert Edward.....	Raleigh, N. C.
Pestel, Paul.....	Columbus
Phillips, Marjorie.....	Marengo
Pope, Clarence Max.....	Zanesville
Potts, David James.....	Arcanum
Quackenbush, Louis Eugene.....	Westerville
Ross, Charles Perry.....	Greenville
Rudner, Jerry Blair.....	Barberton
Rupp, Dorothy Magdalene.....	Lakewood

## REGISTER OF STUDENTS

127

Rutter, Louis Hiram.....	Toledo
Ryder, Robert Charles.....	Dayton
Schick, Charles Eugene.....	Westerville
Shaffer, Clarissa Ellen.....	Carlisle
Shisler, Carl Raymond.....	Clarence, N. Y.
Shoaf, Roy Martin.....	Herminie, Pa.
Short, Ned .....	Westerville
Shumaker, John Ressler.....	New York, N. Y.
Smith, Anna L.....	Johnstown
Spangler, Marshall Rufus.....	Tarlton
Steck, L. William.....	Brookville
Stokes, Mary Elizabeth.....	Westerville
Sullivan, William Anthony.....	New Haven, Conn.
Thuma, Betty .....	Fredericktown
Toman, Rosanna Marie.....	Dayton
Trevorrow, Marian .....	Toms Creek, Va.
Van Scoyoc, Edna Ruthella.....	Deshler
Warner, Donald Dwight.....	Portland, Ore.
Weekley, Jean Elizabeth.....	Pennsboro, W. Va.
Welch, Raymond Battelle.....	Rockbridge
Wells, Walter Byron.....	Westerville
White, Jeannette Vivian.....	Westerville
Wylie, Nevada Belle.....	Westerville

### SPECIAL STUDENTS

Bundy, Catherine Agnes.....	Westerville
Hill, Albert W.....	Gratiot
McLeod, Lois .....	Westerville
Metzger, Dorothy Louise.....	Westerville
Samuel, Frank Ellsworth.....	Westerville
Scott, Hallie H.....	Westerville

### EXTENSION STUDENTS

Barnum, Frank L.....	Columbus
Collins, Maurice M.....	Churchville, Va.
Evans, Verda .....	Cleveland
Frees, Gladys Ellen.....	Westerville
Grove, Frances .....	Hagerstown, Md.
Koons, Arthur .....	Westerville
Rice, Mabel Gladys.....	Ostrander
Shonkwiler, Arthur C.....	Ostrander
Shonkwiler, Helen.....	Ostrander
Tryon, Sager, Jr.....	Bowdil



## OTTERBEIN COLLEGE

## CORRESPONDENCE STUDENTS

Carter, Evelyn	Lebanon
Cooper, Charles Horatio	Coshocton
Fisher, Harry J.	McAlisterville, Pa.
Hoff, Mildred L.	New Madison
Horne, Wilma M.	Mt. Vernon
Noyes, Arlene	Buffalo, N. Y.
Schisler, Harold	Portsmouth
Yantis, Julian	Westerville

## SCHOOL OF MUSIC

## SENIORS

Dick, Alice Mae	North Robinson
Dipert, Martha Ellen	Findlay
Forwood, Hazel Victoria	Springfield, Ill.
Grove, Frances Stover	Hagerstown, Md.

## UNCLASSIFIED

Allen, Carolyn	Westerville
Allen, Priscilla	Westerville
Altman, Howard William	Westerville
Altman, Mary Louise	Westerville
Arnold, Geraldine Beatrice	Barberton
Ashcraft, Clara Elaine	Dayton
Babler, Viola Lucille	Orangeville, Ill.
Barnes, Mary Elizabeth	Westerville
Barnes, Robert Owen	Westerville
Barton, Kenneth	Navarre
Beelman, Alice	Westerville
Beldon, Troy	Lima
Bercaw, Betty	Westerville
Bercaw, James	Westerville
Bradshaw, George L.	Columbus
Brady, Tom Erasmus	Miamisburg
Breden, Robert Eston	Westerville
Bungard, William Stacey	Johnstown, Pa.
Bush, Elwood Stephen	Newport, Ky.
Cherrington, Margaret	Westerville
Clark, Lloyd	Westerville
Cook, Ethel	Westerville
Cook, Ned	Westerville
Cook, Ruth	Dayton
Coblentz, Ruth Marcia	Dayton
Cox, Stewart	Newark
Curfman, Ruth	Westerville
Dewart, Bobby	Worthington

# REGISTER OF STUDENTS

129

DeWeese, Warren John.....	Dayton
DeWitt, Rosalyn .....	Westerville
Engle, Alberta .....	Westerville
Engle, Bonita Armintha.....	Westerville
Evarts, Marjorie .....	Westerville
Forwood, Gladys Maxine.....	Springfield, Ill.
Frease, Doris Maxine.....	Canton
Funk, Robert Waldo.....	Wilkinsburg, Pa.
Furniss, Robert Daniel.....	Westerville
Grabill, Dorothy .....	Westerville
Grabill, Ernest .....	Westerville
Grabill, Gladys .....	Westerville
Grabill, Glenn, Jr.....	Westerville
Grabill, James .....	Westerville
Hanks, Robert Glenn.....	Rixford, Pa.
Hanson, Robert .....	Westerville
Harsha, Helen Lucille.....	Westerville
Hart, Carl Robert.....	Rockford
Heck, Eleanor Elizabeth.....	Dayton
Holland, Kenneth Marvin.....	Toledo
Holmes, Robert .....	Westerville
Horne, Wilma Marguerite.....	Mount Vernon
Hummell, Dorothy Jean.....	Cleveland
Hunt, Ruth Mabel.....	Rixford, Pa.
Innerst, Almena .....	Westerville
Innerst, Ivan .....	Westerville
Innerst, Lucille .....	Westerville
Jackson, Lacy Ruth.....	Keyser, W. Va.
Jones, Martha May .....	Westerville
Jones, Paul Raymond .....	Westerville
Jones, Ruth Maxine .....	Westerville
Kelser, Sara Kathryn .....	Westerville
Kuhen, William George .....	Columbus
Kuhns, James .....	Westerville
Kundert, Lorena .....	Dayton
Kurtz, Barbara .....	Westerville
Landon, Earl Gifford.....	Westerville
Lawrence, Cora Jane.....	Westerville
Lilly, Raymond Monroe.....	Hicksville
Luby, Frederick .....	Westerville
Martin, Donald Ray.....	Westerville
Mickle, Jennie Elizabeth.....	Johnstown, Pa.
Mills, Donald .....	Westerville
Mitchell, Richard Wendell.....	Grand Rapids, Mich.
Moore, Lucile Eleanor.....	Willard
Morris, Robert .....	Westerville
Morrison, Wilbur Hurst.....	Ashville



## OTTERBEIN COLLEGE

Nagel, William	Canton
Needham, Robert	Westerville
Newton, Katherine G.	Charleston, W. Va.
Nichols, Evelyn Eugenia	Hamilton
Nichols, Harold Emerson	Hamilton
Noyes, Arlene Eleanor	Buffalo, N. Y.
Orndorf, Patricia	Westerville
Owens, Ruth Evelyn	Westerville
Peters, Floretta Mary Catherine	Saegerstown, Pa.
Peters, Loren Bowman	Logan
Peters, Sarah Louise	Saegerstown, Pa.
Phillips, Violet	Westerville
Plott, Jean	Westerville
Plott, Olive	Westerville
Pomeroy, Esther	Westerville
Pomeroy, Wandalee	Westerville
Predmore, Ruthella Marie	Kenton
Rankey, Mary	Westerville
Riegle, Frances Evelyn	Arcanum
Ricketts, Helen Jean	Westerville
Rohrer, Dorothea Baker	Hagerstown, Md.
Runk, Mary Katherine	Grand Rapids, Mich.
Ryder, Mary Alice	Vandalia
Schuesselin, Norma Eileen	Canton
Schumaker, John Ressler	New York, N. Y.
Shaw, Charles Gordon	Lima
Shatzer, Ruth Ida	North Canton
Shisler, Carl Raymond	Clarence, N. Y.
Shoop, Kathryn Lucille	Canton, China
Smelker, Mary Elizabeth	Westerville
Smith, Ella B.	Westerville
Smith, Ruth	Westerville
Snyder, Eleanor	Westerville
Spangler, Marshall Rufus	Tarleton
Spessard, Dwight	Westerville
Spitler, William Howard	Hoytville
Stelzer, Henry	Westerville
Stokes, Mary Elizabeth	Westerville
Troop, Alice	Westerville
Troop, H. W.	Westerville
Truxal, Sarah Grace	Wilkinsburg, Pa.
Vance, Waid Winston	Westerville
Van Scoyoc, Edna Ruthella	Deshler
Van Scoyoc, Martha Pauline	Deshler
Wagner, Eleanor Elizabeth	Lakewood
Whittington, Richard Thomas	Lima
Wilson, Joseph	Westerville
Wolfarth, William	Canton

# REGISTER OF STUDENTS

131

## CHILDREN'S CLASS

Snyder, Rex .....	Westerville
Vance, Robert .....	Westerville

## SCHOOL OF ART

Bell, Harold W.....	Lancaster
Boor, Laurence Henry.....	Bowerston
Bremer, Marion Louise.....	Portsmouth
Deever, Philip Otterbein.....	Dayton
Gantz, Jessie Hannah.....	Doylestown
Gibson, Ruth Elizabeth.....	Westerville
Harris, Kenyon Lowell.....	Arcanum
Harrold, Ronald P.....	Greensburg, Pa.
Henry, Helen Ruth.....	Connellsville, Pa.
Howe, Martha .....	Westerville
Huhn, Roger .....	Westerville
Lambert, Ruth Elizabeth.....	Rich Hill, Mo.
Mayne, Dorothea Elizabeth.....	Westerville
Metzger, Dorothy Louise.....	Westerville
Moody, Melvin Albert.....	Westerville
Moomaw, Mary Margaret.....	Sugarcreek
Moore, Gene C.....	Westerville
Norris, Virginia E.....	Westerville
Oldt, Margaret Elizabeth.....	Canton, China
Owens, Ruth Evelyn.....	Westerville
Parcher, Catherine Ferne.....	Westerville
Rohrer, Dorothea Baker.....	Hagerstown, Md.
Schott, Paul Allen.....	Canton
Spangler, Marshall Rufus.....	Tarlton
Stengel, Ruth Ethel.....	Buffalo, N. Y.
Strahm, Wahnita May.....	Pickerington
Thuma, Betty .....	Fredericktown
Wagner, Eleanor Elizabeth.....	Lakewood
White, Jeannette .....	Westerville
Wylie, Nevada .....	Westerville

## HIGH SCHOOL PUPILS

Bercaw, Betty .....	Westerville
Brinkman, Doris .....	Westerville
Cook, Charles .....	Westerville
Grabill, Mary .....	Westerville
Hendrickson, Mary Jane.....	Westerville
Kuhns, James .....	Westerville
Moore, Ruth .....	Westerville
Stokes, James .....	Westerville



# OTTERBEIN COLLEGE

GRADE SCHOOL PUPILS		
Beal, Billy	.....	Westerville
Bercaw, James	.....	Westerville
Cook, Ethel	.....	Westerville
Courtright, Franklin	.....	Westerville
Elliott, Dean	.....	Westerville
Esselstyn, Billy	.....	Westerville
Gray, Kenneth	.....	Westerville
Hulse, Donald	.....	Westerville
Kurtz, Barbara	.....	Westerville
Lawrence, Cora Jane	.....	Westerville
McClarren, Robert	.....	Westerville
Myers, Bill	.....	Westerville
Noel, Fred	.....	Westerville
Shear, Evan	.....	Westerville
Stelzer, Bernard	.....	Westerville

## SUMMARY OF STUDENTS

COLLEGE:		72
Seniors	.....	54
Juniors	.....	64
Sophomores	.....	108
Freshmen	.....	298
Total	.....	6
Special	.....	127
Music	.....	30
Art	.....	10
Extension	.....	8
Correspondence	.....	479
Grand Total	.....	115
Names Repeated	.....	364
Net Total	.....	364

## MEN AND WOMEN

COLLEGE CLASSES:		164
Men	.....	134
Women	.....	298
Total	.....	25
ADJUNCT DEPARTMENTS ONLY:		41
Men	.....	364
Women	.....	
Total	.....	

# REGISTER OF STUDENTS

133

## NET TOTAL:

Men .....	189
Women .....	175
Total .....	364

## CONFERENCES

	United Brethren Students	Total
Allegheny .....	19	27
East Ohio .....	31	45
Erie .....	12	15
Miami .....	41	48
Michigan .....	2	2
Sandusky .....	15	29
Southeast Ohio .....	92	170
West Virginia .....	5	7
Outside of Cooperating Territory.....	12	21
Total .....	229	364

## DENOMINATIONS

United Brethren .....	229
Methodist Episcopal .....	61
Presbyterian .....	28
Lutheran .....	7
Evangelical .....	6
Reformed .....	4
Christian Union .....	4
Church of Christ.....	3
Baptist .....	3
Roman Catholic .....	3
Congregational .....	2
Church of the Brethren.....	1
Society of Friends.....	1
Seventh Day Adventist.....	1
Community .....	1
Jewish .....	1
No Church Affiliations.....	9
Ohio .....	295

## STATES AND COUNTRIES

Ohio .....	395
Pennsylvania .....	36
West Virginia .....	7
New York .....	6



## OTTERBEIN COLLEGE

Illinois .....	4
China .....	3
Virginia .....	3
Michigan .....	2
Maryland .....	2
Connecticut .....	2
Oregon .....	1
Missouri .....	1
Kentucky .....	1
Africa .....	1
Total .....	364

## OHIO BY COUNTIES

Adams .....	1	Mercer .....	1
Allen .....	3	Miami .....	1
Butler .....	3	Madison .....	1
Champaign .....	1	Montgomery .....	29
Clermont .....	1	Morrow .....	6
Coshocton .....	1	Muskingum .....	1
Crawford .....	3	Pickaway .....	1
Cuyahoga .....	5	Portage .....	2
Darke .....	8	Richland .....	2
Defiance .....	1	Ross .....	1
Delaware .....	8	Sandusky .....	2
Fairfield .....	7	Scioto .....	2
Franklin .....	135	Stark .....	17
Greene .....	1	Summit .....	6
Hancock .....	2	Tuscarawas .....	6
Hardin .....	1	Vinton .....	1
Harrison .....	1	Warren .....	3
Henry .....	2	Wayne .....	2
Highland .....	1	Williams .....	1
Hocking .....	6	Wood .....	2
Huron .....	2		
Knox .....	3	Total .....	295
Licking .....	7	Outside Ohio .....	69
Lucas .....	3		
Marion .....	2	Total .....	364

# INDEX

	PAGE
Administration, Officers of.....	7
Aid to Students.....	33
Art and Sculpture.....	47
Art, School of .....	113
Astronomy .....	47
Athletics .....	22
Bacteriology .....	54
Bible .....	48
Bills, Payment of.....	30
Biology .....	52
Board and Rooms.....	20
Botany .....	52
Buildings and Grounds.....	18
Calendar, College .....	3
Christian Associations .....	24
Christian Endeavor .....	24
Chemistry .....	56
Civilization .....	58
Conservatory of Music.....	96
Courses of Study—	
Art—School of .....	114
College .....	47
Music—School of .....	97
Cum Laude Students.....	117
Curriculum Requirements .....	25
Debate .....	23
Degrees and Diplomas.....	28
Degrees Conferred .....	119
Dramatics .....	23
Economics .....	58
Education .....	61
English Composition and Rhetoric.....	64
English Literature .....	65
Entomology .....	52
Entrance, Requirements for.....	39
Examinations .....	28
Executive Committee .....	6
Expenses—	
Art—School of .....	116
College .....	30
Music—School of .....	111
Extension Courses .....	44
Faculty of Instruction.....	8



Faculty—	113
Art—School of .....	25
Club .....	14
Committees .....	96
Music—School of .....	30
Fees for Delinquency and Change of Schedule.....	31
Fees, Entrance, Laboratory, etc.....	68
French .....	26
Freshman Period and Orientation.....	17
General Information .....	28
General Regulations .....	70
Geology .....	71
German Language and Literature.....	26
Grading System .....	42
Graduation, Requirements of.....	73
Greek Language and Literature.....	17
Historical Statement .....	73
History .....	75
Home Economics .....	32
Honor Graduates of High Schools—Reduction to.....	117
Honor Students in College.....	20
Housing and Supervision of Students.....	77
Italian .....	77
Latin .....	21
Libraries .....	23
Literary Societies .....	18
Location .....	79
Mathematics .....	81
Mechanical Drawing.....	51
Missions .....	23
Musical Organizations .....	96
Music—School of .....	82
Mythology .....	23
Oratory .....	82
Orientation .....	53
Ornithology .....	100
Organ Study .....	83
Philosophy .....	84
Physical Education .....	86
Physics .....	54
Physiology .....	100
Pianoforte .....	27
Point System .....	88
Political Science .....	44
Pre-Professional Courses .....	37
Prizes .....	

# INDEX

137

	PAGE
Publications—	
Official .....	25
Student .....	24
Public School Music.....	106
Public Speaking .....	89
Registration .....	29
Religious Education .....	49
Religious Services .....	21
Rhetoric .....	22
Scholastic Honors .....	27
Scholarships—	
Miscellaneous .....	34
Prizes .....	37
Self Help—Opportunities for.....	33
Sociology .....	91
Spanish .....	94
Student Activities .....	23
Student Assistants .....	12
Student Government .....	16
Student Loan Funds .....	37
Students—Register of .....	117
Students—Summary of .....	132
Surveying .....	80
Teachers—Special Work for.....	45
Trustees, Board of .....	5
Tuition and Fees.....	31
Violin Department .....	104
Vocal Department .....	103
Zoology, General .....	52





# APPLICATION FOR ADMISSION

*(Use Great Care in Filling Out This Application)*

I hereby apply for admission to Otterbein College. I agree to conform to the rules and regulations of the College and submit the following information, for the accuracy of which I vouch:

Name..... Age.....  
          *First*                    *Second*                    *Last*

Home Address Street and No.....

P. O. .... State.....

Name of Parent or Guardian.....

Name of Pastor..... Denomination.....

Address of Pastor .....

Name of High School or other Preparatory School from which  
candidate expects to come .....

Address of School.....

Name of Principal.....

Time of graduation: Month..... Day..... Year.....

Does your scholarship rank you in the highest, middle or lowest  
third of your class? .....

Subject in which you desire to major.....

Vocation you intend to follow.....

When do you intend to enter?.....

A room retention fee of \$5.00 is required of all women. A similar fee is required of all men assigned to King Hall. Such fees should be enclosed with this application.

Date.....

This application should be mailed to:

F. J. VANCE, *Registrar,*  
*Westerville, Ohio.*



