

Otterbein University

Digital Commons @ Otterbein

Senate

Governance

4-23-2014

Governance Review Commission

Otterbein University

Follow this and additional works at: <https://digitalcommons.otterbein.edu/senate>



Part of the [Higher Education Commons](#), and the [Public Affairs, Public Policy and Public Administration Commons](#)

Recommended Citation

Otterbein University, "Governance Review Commission" (2014). *Senate*. 6.
<https://digitalcommons.otterbein.edu/senate/6>

This Article is brought to you for free and open access by the Governance at Digital Commons @ Otterbein. It has been accepted for inclusion in Senate by an authorized administrator of Digital Commons @ Otterbein. For more information, please contact digitalcommons07@otterbein.edu.





The 2014 Undergraduate Commencement date is

A. April 31st

B. May 14th

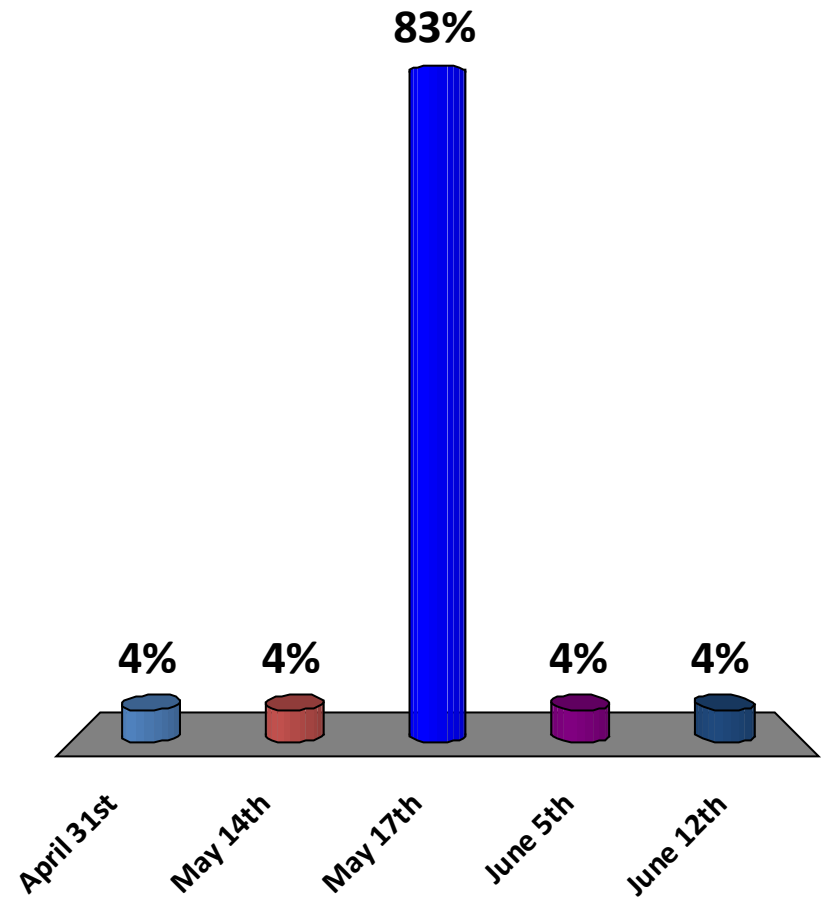
C. May 17th

D. June 5th

E. June 12th



Test slide



Governance Review Commission

April 23 Senate Update



History

- A year ago, bill came to Senate focused on the questions:
*“Is this how we want to be governed” and
“Does our current system operate in the most effective and efficient
manner and are these operations transparent”*

- Governance Review Commission Created

Charge to the Commission: *Gather information on and analyze various models of shared academic governance based on the principles of participation, inclusiveness, and representation that are affirmed as the core of Otterbein’s system of governance.*

Consult with all relevant constituent groups within our community for input on how we want to be governed and what type of governance system would foster the greatest campus transparency.

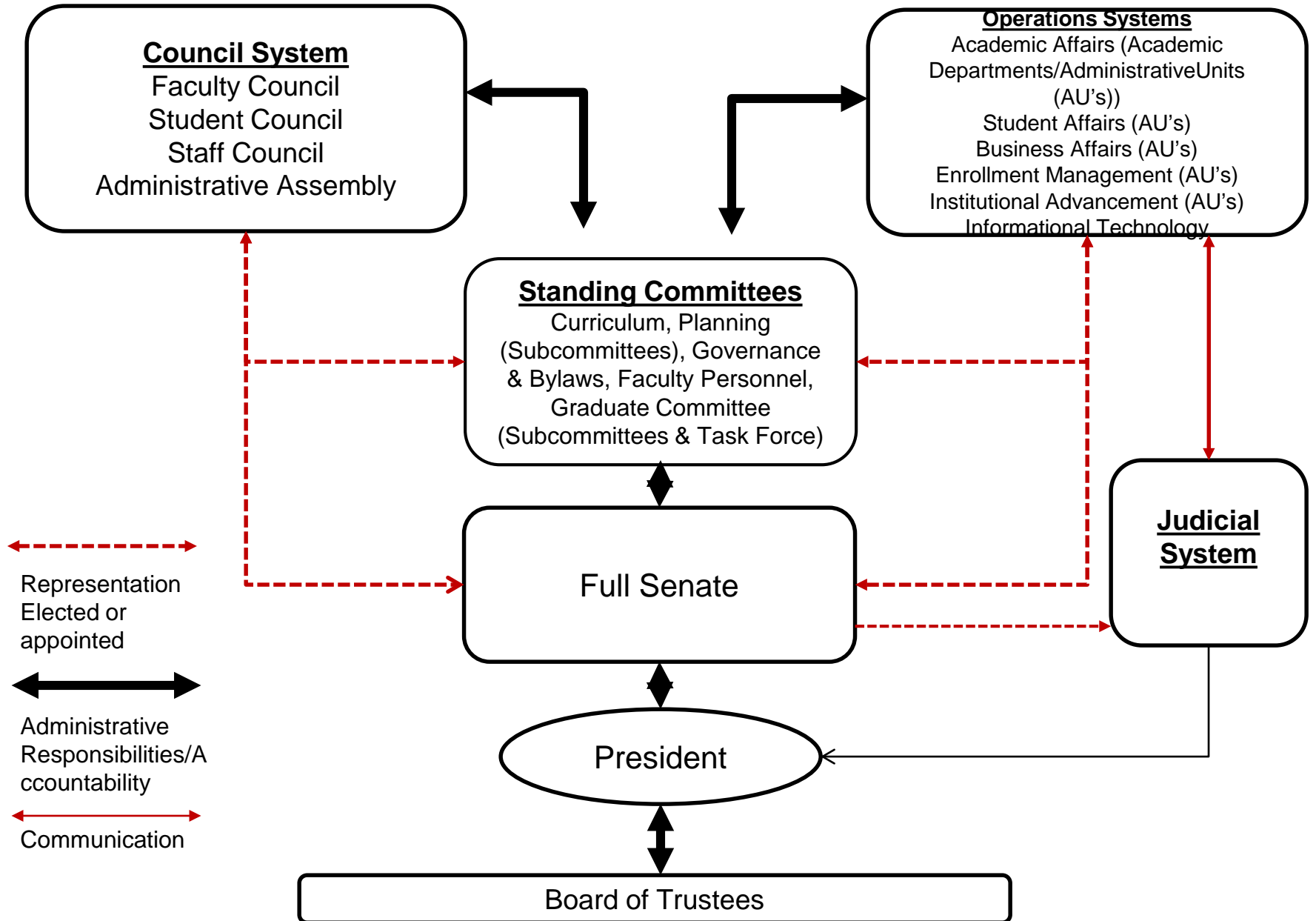


History

Senate voted on Senate Bill 13/14-10 at the February 19, 2014 meeting.

Approval of the proposal to support the basic concept of the new governance models and charge the Governance Review Commission with writing the new bylaws.

This is a representative model of governance that will include four councils each elected by their constituent group – Faculty, Student, Administrative and Staff; five super committees – Graduate Council, Curriculum, Planning, Governance & Bylaws and Faculty/Personnel along with their corresponding subcommittees.



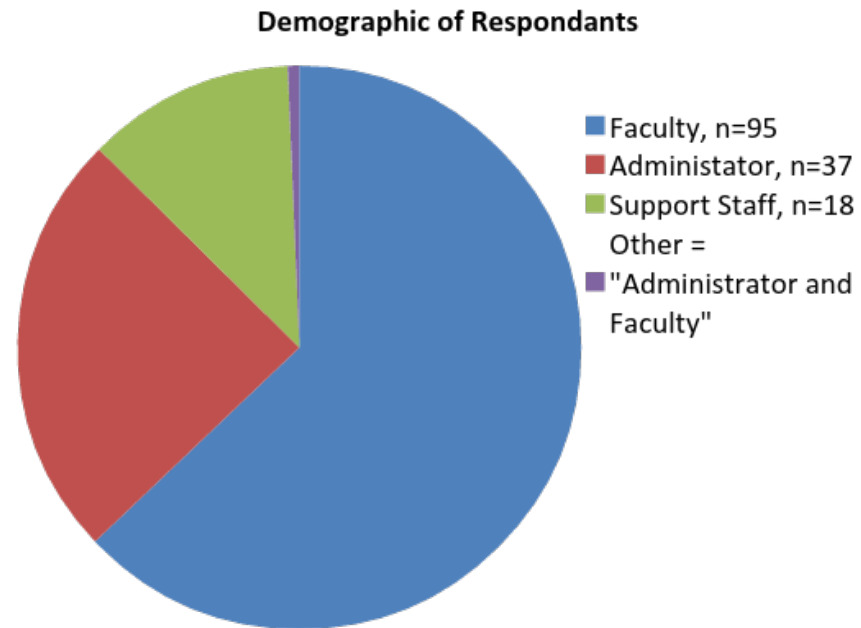


Where We Are Now

- Working Groups - Assessment, Standing Committees, Oversight Writing Committee, Council Representatives
- Goal of presenting to Senate in Fall of 2014

Assessment Committee

- Spring Survey
 - Open from March 21 to April 4
 - Sent to Faculty, Administrators and Support Staff
 - 151 responses



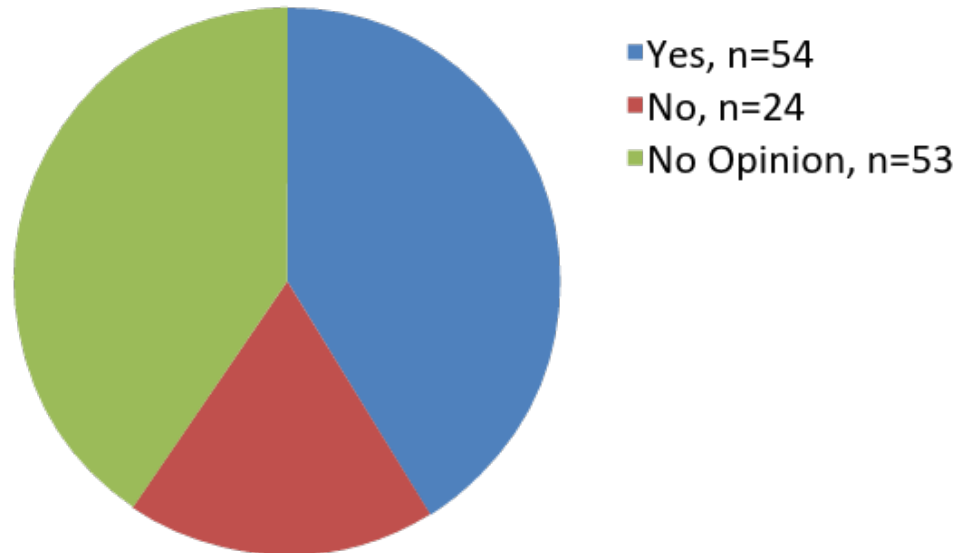
Goals of Survey

- “Test” our working principles:
 - Assumptions of a Senate Body
 - Size of Senate
 - Initial Committee Changes
- Provide venue for Feedback



Current Assumptions

Should we maintain our current membership assumptions?

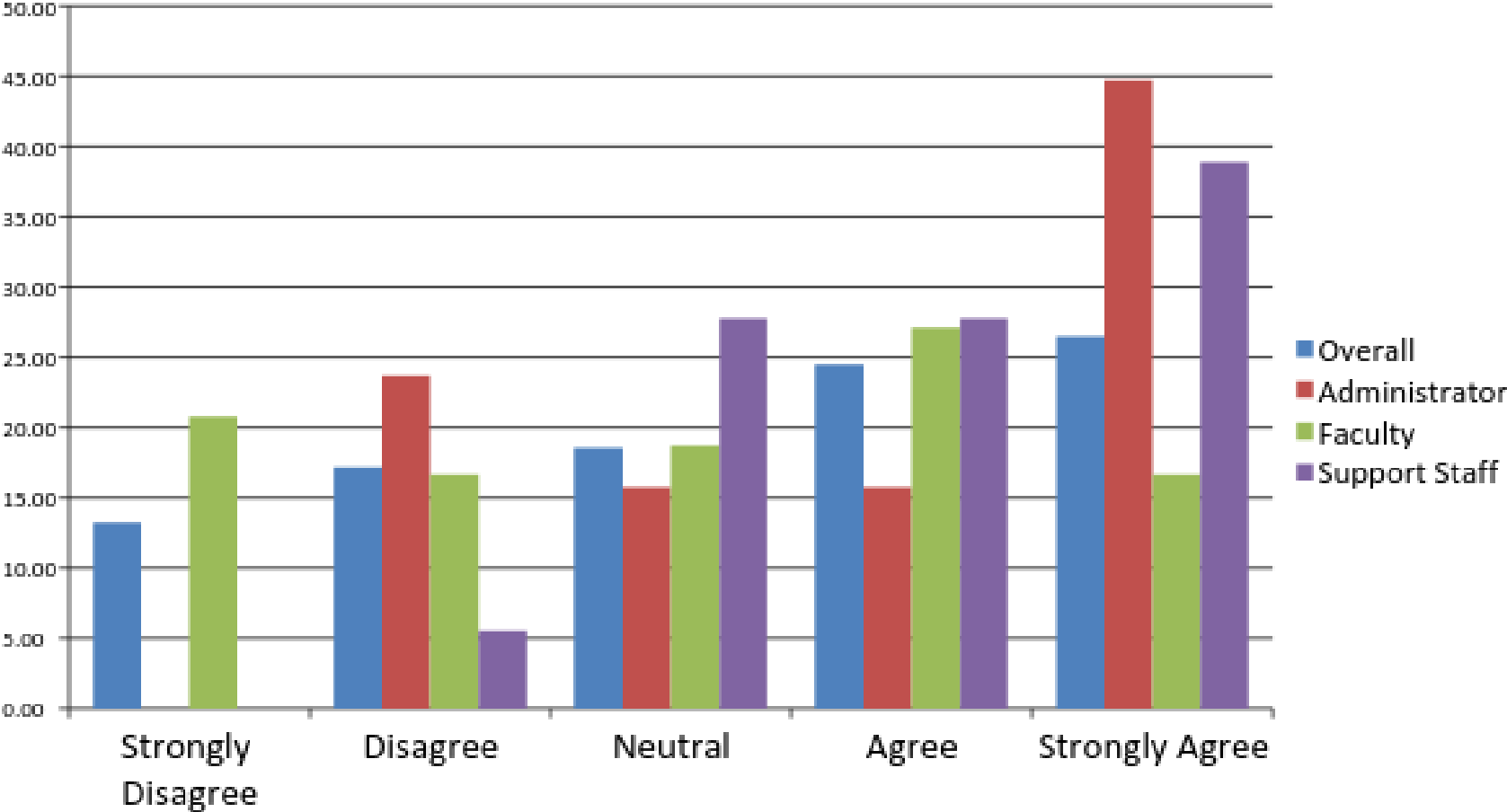




Make-Up of Senate

- Wide support for increasing representation in Senate, especially increased number of staff.
- Support for number of student senators remaining equal to faculty.

Student Senators should be equal to Faculty Senators



Size of Senate

- Varied responses – likely due to varied opinion on overall model.
- Most support for Medium or Large (not Small or XL)
- Also, models had prescribed numbers which might have skewed perceptions of the overall size of Senate.

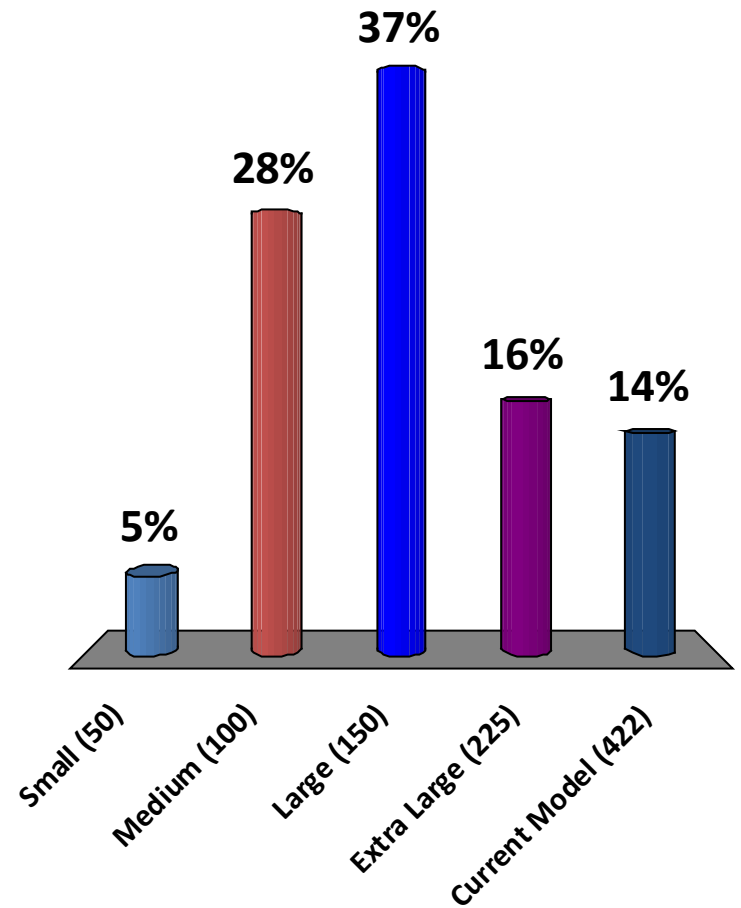


Senate Poll*

- Which model do you prefer?
- Small (50), Medium (100), Large (150), XL (225) or current model (422 people)?

Which Senate model do you prefer?

- A. Small (50)
- B. Medium (100)
- C. Large (150)
- D. Extra Large (225)
- E. Current Model (422)





Standing Committee Polling*

- You'll be asked to respond to the following statements which are guiding principles of the current committee work:
 - Each Standing Committee should have at least one representative from each council
 - Requires that all senators serve on at least one committee (Standing or Subcommittee)
 - People may serve on a committee (Standing or Subcommittee) without serving on Senate

Each Standing Committee should have at least one representative from each council

A. Strongly Agree

B. Agree

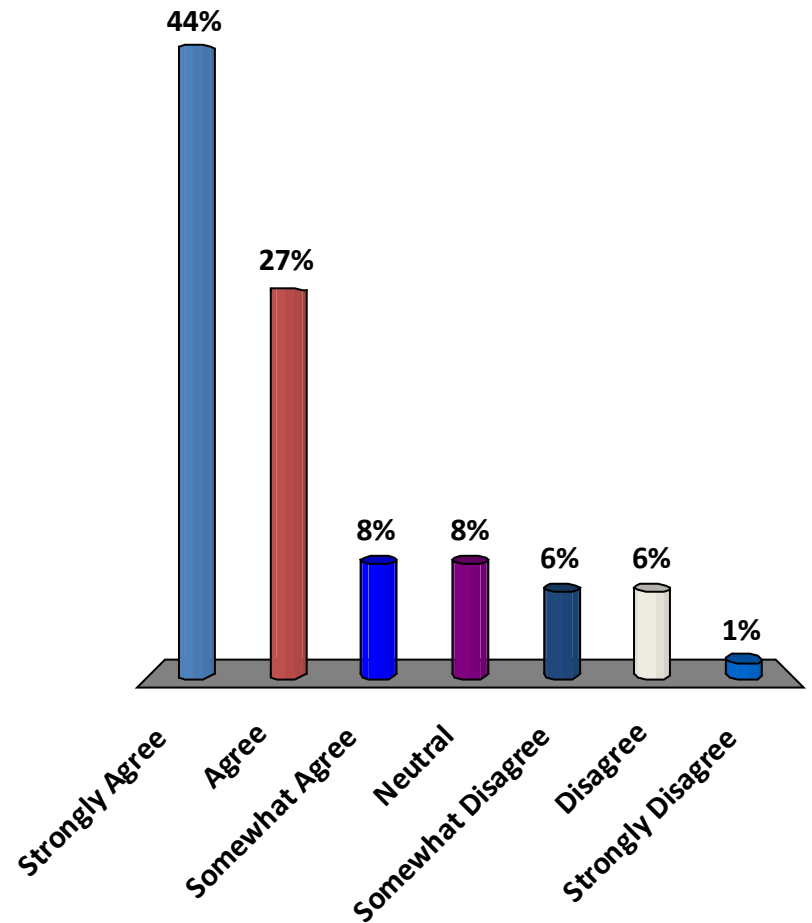
C. Somewhat Agree

D. Neutral

E. Somewhat Disagree

F. Disagree

G. Strongly Disagree



Requires that all senators serve on at least one committee (Standing or Subcommittee)

A. Strongly Agree

B. Agree

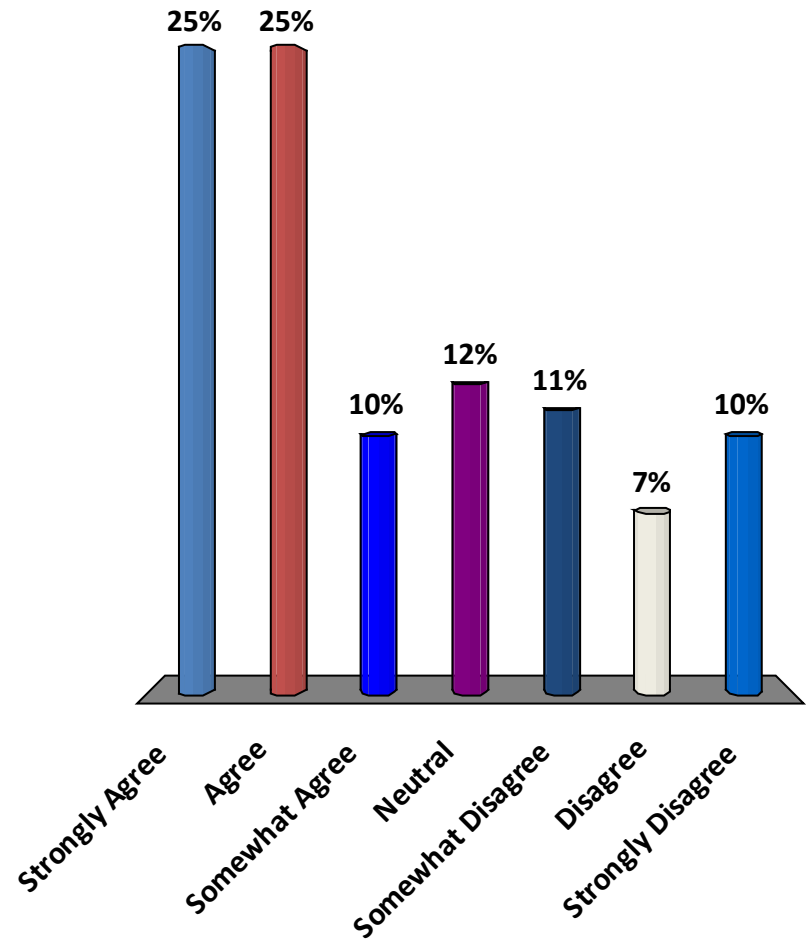
C. Somewhat Agree

D. Neutral

E. Somewhat Disagree

F. Disagree

G. Strongly Disagree



People may serve on a committee (Standing or Subcommittee) without serving on Senate

A. Strongly Agree

B. Agree

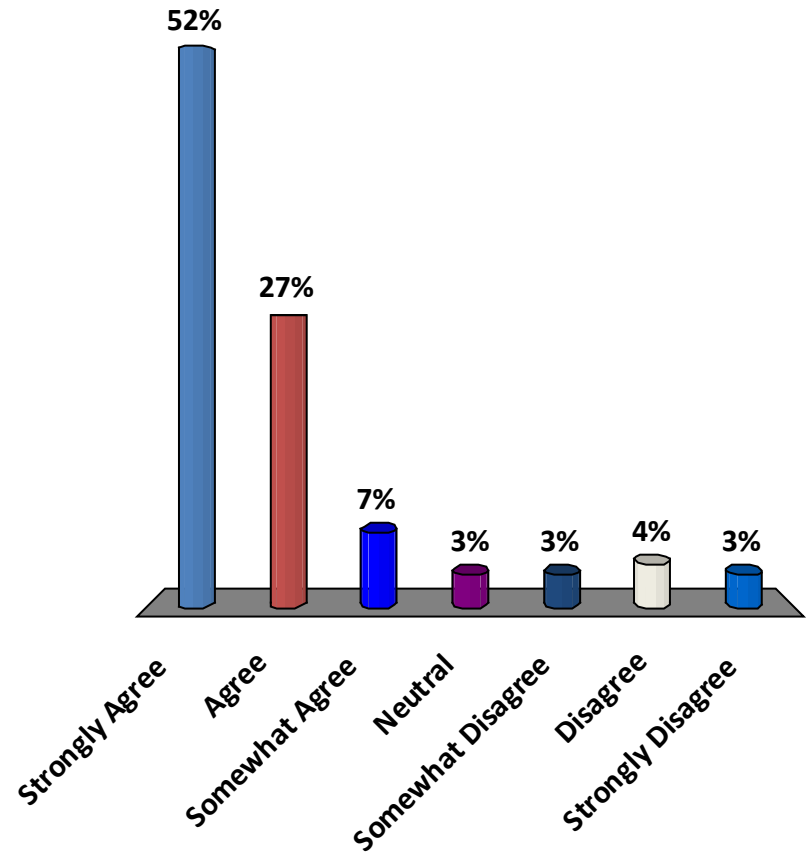
C. Somewhat Agree

D. Neutral

E. Somewhat Disagree

F. Disagree

G. Strongly Disagree



Questions to Continue to Address

Tell us now (via index cards) or email any member of the Governance Commission:

Co-Chairs: *Bob Gatti and Jackie Haverkamp*

Faculty Representatives: *Chris Kirk (Trustee), John Ludlum, Andrew Mills, John Stefano*

Administrator Representatives: *Matthew D'Oyly, Kate Lehman, Lisa Phillips*

Staff Representatives: *Lisa Byers, Claire Parson, Rebecca Raeske-Grinch*

Student Representatives: *Jacob Bowman, Charmaine Mosley, Nikki Sherbahn (Trustee)*

Our Next Steps

Governance Website (under Senate website)

- *Full Survey Results available soon*
- *Document outlining proposed bylaw changes (updated monthly)*

Commission will continue to function through the Summer and into the Fall.

Goal - Fall 2014 Presentation to Senate of a new Governance Model (Senate, Councils and Committees)