

Otterbein University

Digital Commons @ Otterbein

[Course Catalogs](#)

[Archives & Special Collections](#)

1-1927

1927 January Otterbein College Bulletin

Otterbein University

Follow this and additional works at: <https://digitalcommons.otterbein.edu/coursecatalogs>



Part of the [Curriculum and Instruction Commons](#), [Higher Education Commons](#), and the [Higher Education Administration Commons](#)

Recommended Citation

Otterbein University, "1927 January Otterbein College Bulletin" (1927). *Course Catalogs*. 5.
<https://digitalcommons.otterbein.edu/coursecatalogs/5>

This Book is brought to you for free and open access by the Archives & Special Collections at Digital Commons @ Otterbein. It has been accepted for inclusion in Course Catalogs by an authorized administrator of Digital Commons @ Otterbein. For more information, please contact digitalcommons07@otterbein.edu.

Otterbein College Bulletin

New Series

JANUARY, 1927

Volume XXIII, Number 3



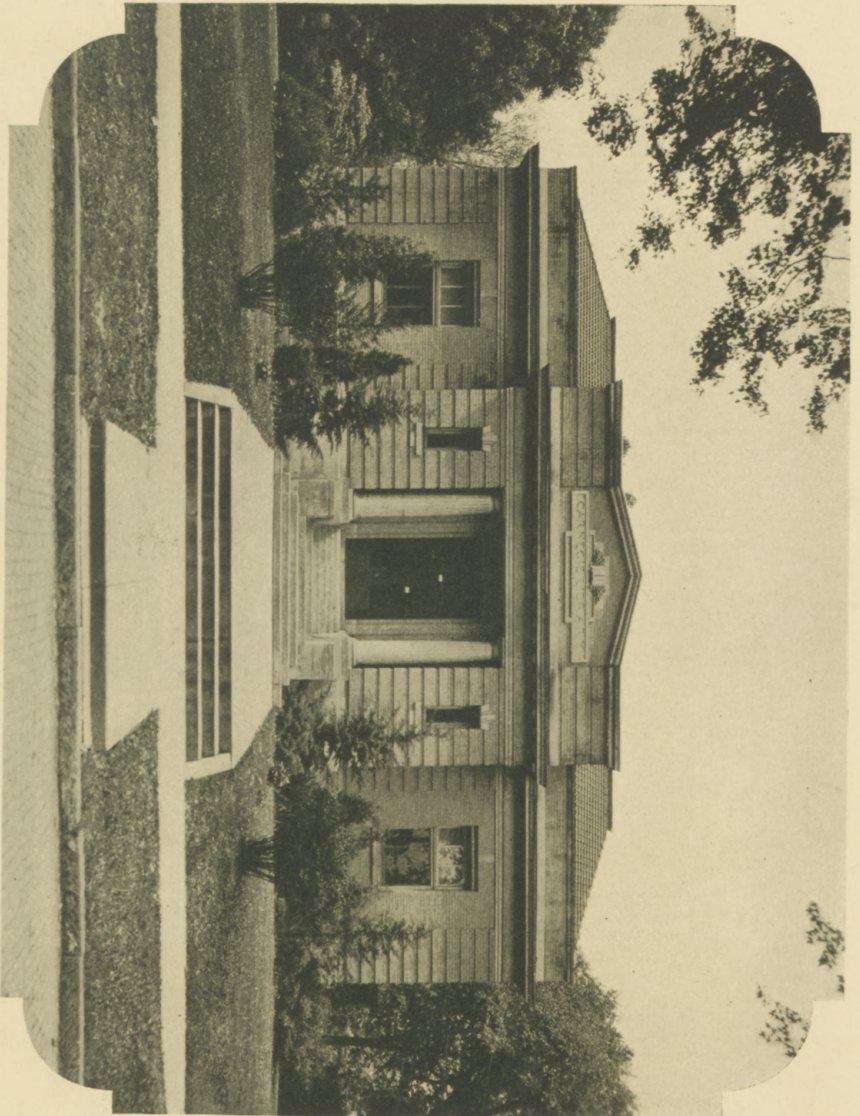
Published by the College

Issued Quarterly

Entered as second class matter at Westerville, Ohio. Acceptance for mailing at Special Rate of Postage provided for in Section 1103, Act of October 3, 1917. Authorized July 28, 1918.

CARNEGIE LIBRARY

*"All around the room my silent servants wait,
My friends in every season, bright and dim."*





ADMINISTRATION BUILDING

"Her halls have their own message of truth and hope and love."

The Fine Arts

The life of Otterbein College covers a period of eighty years of educational service. The sturdy pioneers of her early days believed in scholarship and character coupled with honesty, industry and service to society. She has always emphasized a broad cultural training developed through a liberal arts curriculum.

To supplement this training the fine arts have been encouraged. Strong departments of music and art housed in the beautiful Lambert Hall of Fine Arts give training in both the theoretical and practical phases of these subjects.

Physical Training --- Athletics --- Sports

A complete program of physical training is prescribed and all students in two years of their course are required to take a prescribed amount of work.

There are four well-trained and experienced instructors in this department. For this work academic credit is allowed.

In addition all forms of outdoor and indoor sports are encouraged. Ample space for field sports is provided. Inter-collegiate activities are encouraged.

The Cost of Education at Otterbein

There are three costs of education:

1. EDUCATION COSTS TIME. It is a slow process, but it is as sure as it is slow. Patient waiting is necessary for the sure development of mind and character just as the growth of a plant from a tiny seed.
2. EDUCATION COSTS EFFORT. It does not come ready made nor does it come by the mere asking. An investment of one's very self is necessary to produce results.
3. EDUCATION COSTS MONEY. Following is an analysis of the costs at Otterbein:

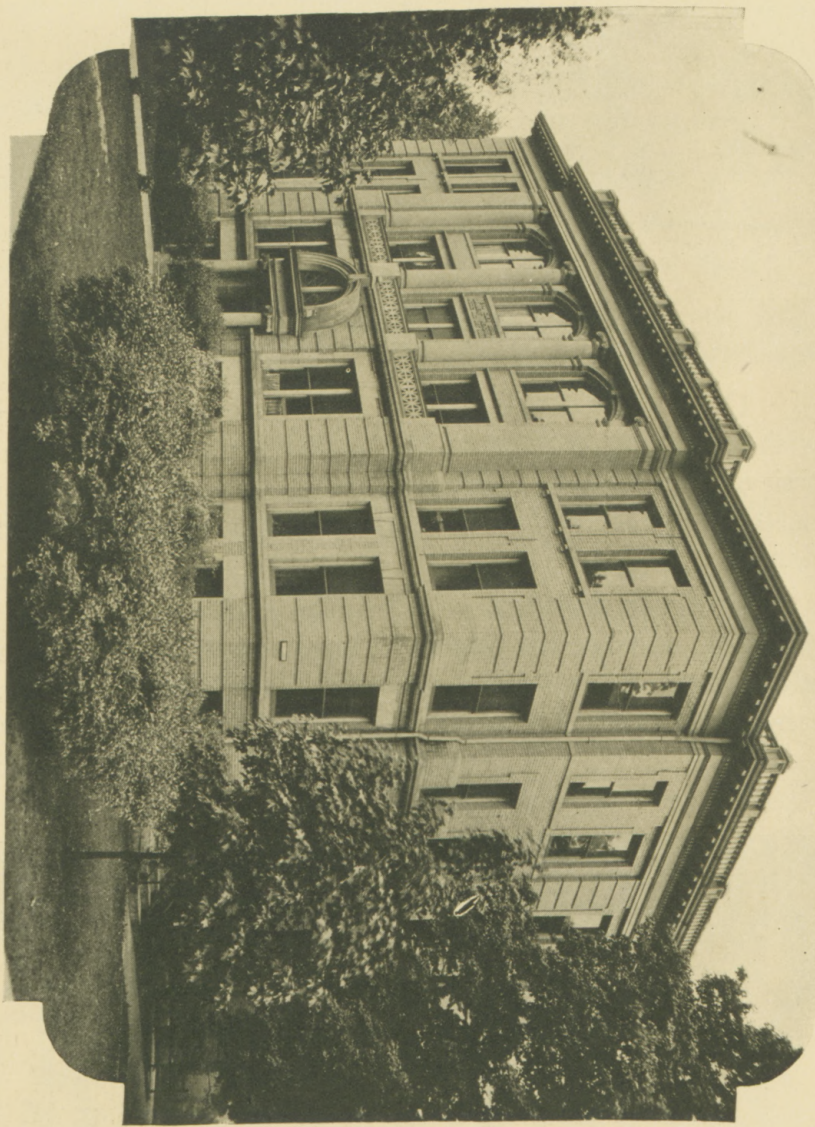
	Low	High
Registration and incidental.....	\$ 10	\$ 10
Tuition	125	125
Laboratory	10 to	25
Board	180	180
Room	47 to	92
Books and miscellaneous.....	75 to	125
	<hr/>	
	\$447 to \$557	

An investment in time, effort and money yields large returns.

Location of Otterbein

Westerville is centrally and conveniently located. It is reached from Columbus by Pennsylvania railway in 20 minutes and by Columbus street railway and motor bus in less than an hour. Excellent motor roads extend in every direction. It is easily accessible from all points in the state.

LAMBERT HALL
*"Wilt thou have music? hark! Apollo plays,
And twenty caged nightingales do sing."*

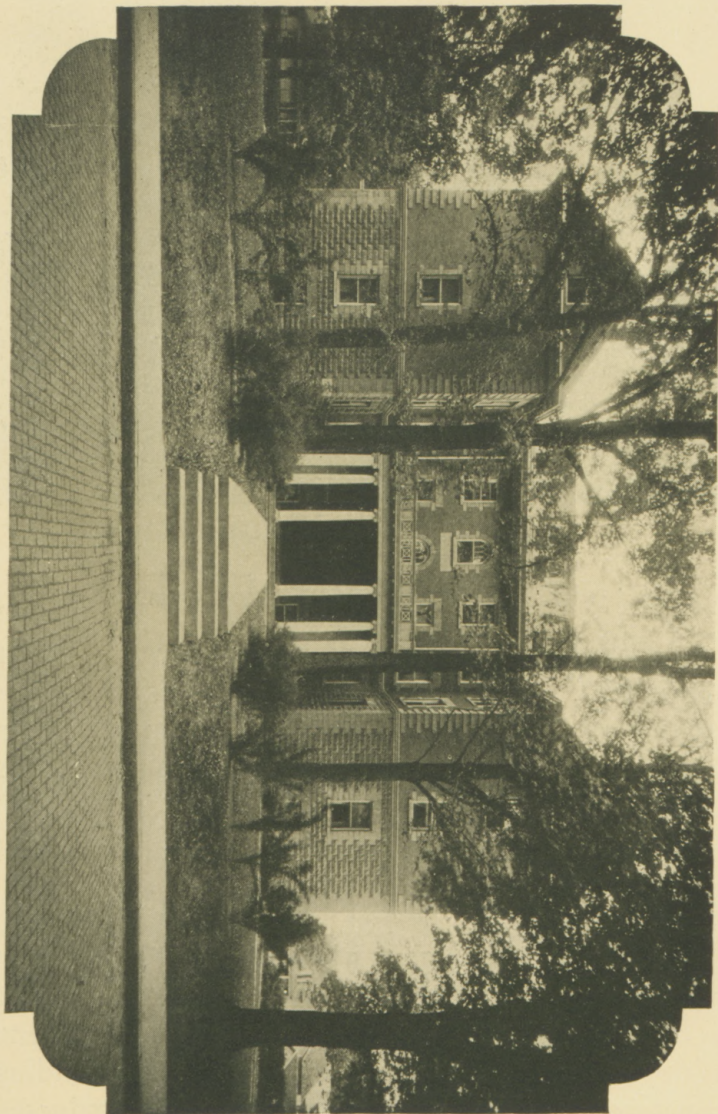




SAUM HALL

*"No voice in the chambers,
No sound in the halls!
Sleep and oblivion
Reign over all!"*

COCHRAN HALL
*"Thou hast by moonlight at her windows sung
With feigning voice, verses of feigning love."*





ASSOCIATION BUILDING



Educational Policy

Otterbein College is of average size. The attendance is about 600. Graduating classes range from 90 to 100. The faculty numbers 35. A student may major in any one of a dozen departments. She holds to the policy of the small liberal arts college.

Finance

Otterbein College is not a rich school in the modern sense of the word. At the same time, she is not in poverty. Nearly a million dollars of fully productive endowment have been added in the last few years, and several new buildings have been constructed. The institution has no indebtedness. Otterbein College follows a conservative and careful business policy. In the end the student profits by it. This policy has commended itself to benevolent corporations and men and women of wealth.



Otterbein a Standard Institution

Otterbein College is a charter member of the Ohio College Association, of the North Central Association of Colleges and Secondary Schools, and is on the approved list of the Association of American Universities. She is also recognized by the various graduate universities separately. These ratings are based upon standards of scholarship, endowment and plant and equipment.

* * * * *

Because of a rapid increase in productive endowment Otterbein has been able to keep student costs at a minimum. The tuition and other fees are much lower than at many other institutions.

At the same time additions have been made to the teaching staff, increases to teachers' salaries and new equipment constantly added. This is not at student's expense but to his advantage.



Religious Life

Otterbein College believes that no education is complete without taking account of the primary place of religion. It believes that religion is life, and that it must be expressed practically. To foster this idea various religious activities are maintained.

Christian Associations, Christian Endeavor Societies, public church services, the Sunday School and daily Chapel services afford these opportunities. Chapel attendance is required, all other services are voluntary.





Nature's Contribution

Not all of the features of Otterbein's educational facilities have been produced by the mind and hand of man. Nature herself has been good to Otterbein College. The beauty of the campus with its velvety green carpet, its towering maples, elms and oaks, its shady nooks and quiet walks, the blooming flowers and singing birds, all contribute to the aesthetic taste of a college student. The town itself is clean, modern and beautiful with cozy homes and spacious lawns. The surrounding country likewise adds beauty and charm. The flowing waters of neighboring streams, the delightful shade of wood and glen, the beautiful country landscape, all are a part of a correct education.

College Activities

Intercollegiate debate, declamation and oratory are phases of the extra curricula activities. Dramatics, literary societies, social groups and a score of impromptu societies make up a joyous life for the college students. Various literary and scientific clubs afford opportunities for expressive activities.



KING HALL



With rooms for eighty men and dining room facilities for one hundred and fifty. The latest addition to the college group. Constructed and managed by Dr. and Mrs. John R. King, class of '94.

Homes for Men and Women

There are two residence halls for women, Cochran Hall and Saum Hall, and King Hall for men. Rooms for both men and women should be engaged early. The capacity is limited. King Hall will accommodate 78 men. Freshmen are required to live in King Hall. Rooms will be assigned in the order of application until the Halls are filled. Then rooms will be provided in town under college supervision. A retention fee of \$5.00 must be sent to the Treasurer, Mr. J. P. West, in order to secure a room for either men or women. Address other correspondence to the President or the registrar.

W. G. CLIPPINGER, President
FLOYD VANCE, Registrar

Otterbein College Bulletin

New Series

JANUARY, 1927

Volume XXIII, Number 3



Published by the College

Issued Quarterly

Entered as second class matter at Westerville, Ohio. Acceptance for mailing at Special Rate of Postage provided for in Section 1103, Act of October 3, 1917. Authorized July 28, 1918.