

Otterbein University

## Digital Commons @ Otterbein

---

2017-2018 Season

Productions 2011-2020

---

10-19-2017

### Adding Machine: A Musical

Otterbein University Department of Theatre and Dance

Follow this and additional works at: [https://digitalcommons.otterbein.edu/production\\_2017-2018](https://digitalcommons.otterbein.edu/production_2017-2018)



Part of the [Acting Commons](#), [Dance Commons](#), [Music Performance Commons](#), and the [Theatre History Commons](#)

---

#### Recommended Citation

Otterbein University Department of Theatre and Dance, "Adding Machine: A Musical" (2017). *2017-2018 Season*. 3.

[https://digitalcommons.otterbein.edu/production\\_2017-2018/3](https://digitalcommons.otterbein.edu/production_2017-2018/3)

This Book is brought to you for free and open access by the Productions 2011-2020 at Digital Commons @ Otterbein. It has been accepted for inclusion in 2017-2018 Season by an authorized administrator of Digital Commons @ Otterbein. For more information, please contact [digitalcommons07@otterbein.edu](mailto:digitalcommons07@otterbein.edu).



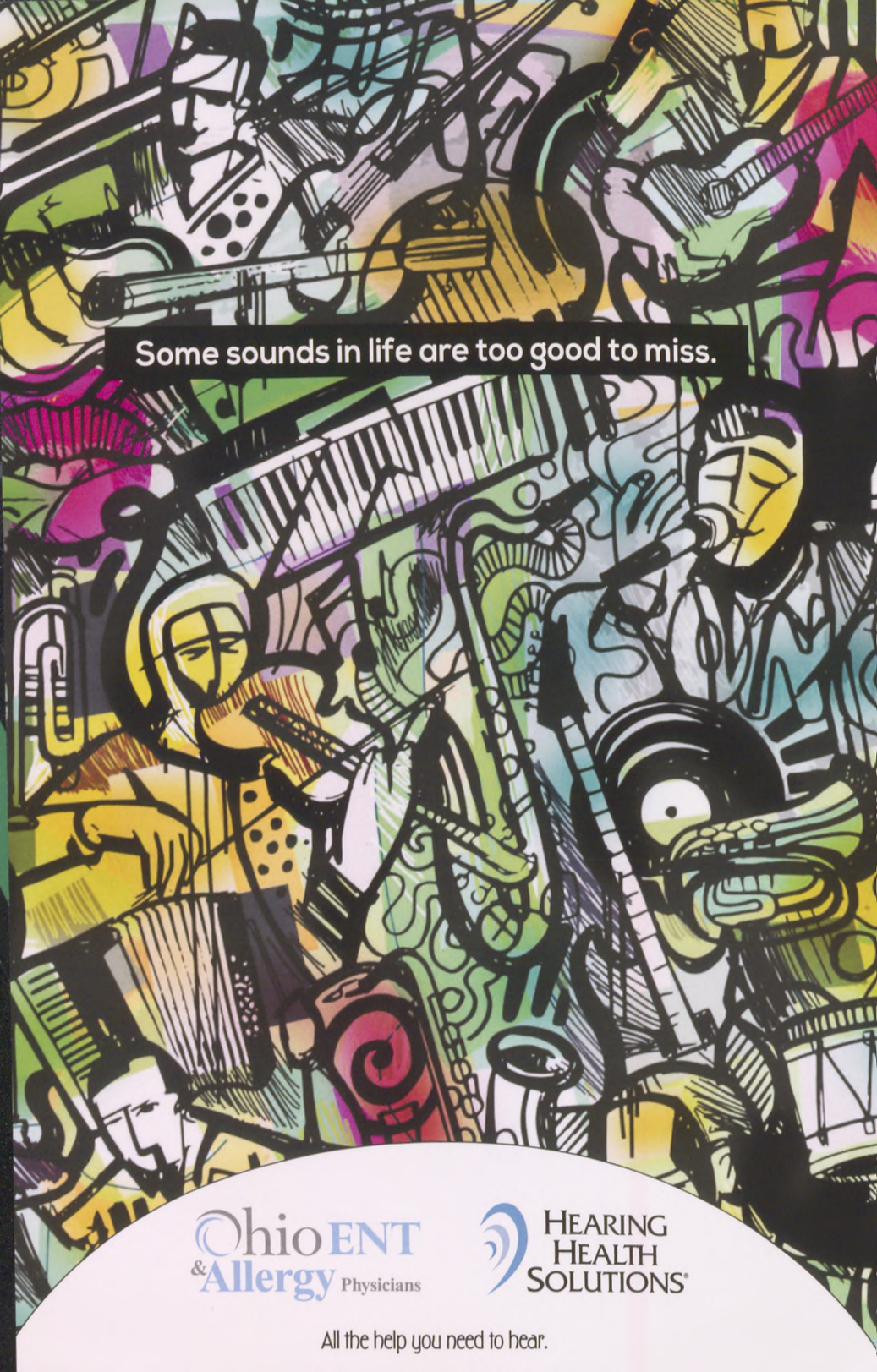
OTTERBEIN  
UNIVERSITY



CREATING THE FUTURE

OTTERBEIN THEATRE & DANCE | 2017-18 SEASON



A vibrant, abstract collage of musical instruments and figures in a jazz style. The image features a variety of instruments including a saxophone, trumpet, piano keyboard, and drums, along with stylized human figures playing them. The background is a mix of bold colors like yellow, green, purple, and black, with dynamic, swirling lines that create a sense of movement and energy.

Some sounds in life are too good to miss.

OhioENT  
&Allergy Physicians

 HEARING  
HEALTH  
SOLUTIONS®

All the help you need to hear.



OTTERBEIN THEATRE & DANCE  
AND  
DEPARTMENT OF MUSIC  
PRESENT

# ADDING MACHINE:

## A MUSICAL

Composed by  
JOSHUA SCHMIDT

Libretto & Lyrics by  
JASON LOEWITH &  
JOSHUA SCHMIDT

Based on the play *The Adding Machine* by Elmer Rice

Directed by LENNY LEIBOWITZ  
Musical Direction by LORI KAY HARVEY

Scenic Design by DAN GRAY  
Costume Design by JULIA FERRERI  
Lighting Design by T.J. GERCKENS  
Sound Design by ETHAN BROWN

Stage Managed by JULIANNE GRAFFEO



October 19-21 and October 27 & 28, 2017

Campus Center Theatre  
100 W. Home St., Westerville

"Adding Machine: A Musical" is presented by special arrangement with SAMUEL FRENCH, INC.

---

# CAST

---

Kevin Buckley.....	Ensemble (U/S: Boss/Charles/Fixer)
Cameron Chang.....	Ensemble
Noël Isaacson.....	Mrs. One (U/S: Mrs. Zero)
Jack Labrecque.....	Mr. Two (U/S: Mr. Zero)
Trey Plutnicki.....	Boss/Charles/Fixer
Lottie Mae Prenevost.....	Mrs. Zero
Reuben Reese.....	Mr. One (U/S: Shrdlu)
Kenneth Remaklus.....	Shrdlu
Emma Shine.....	Ensemble
Payton Tevis.....	Daisy Dorothea Devore
Cecilia Trippiedi.....	Ensemble (U/S: Daisy Dorothea Devore)
Leah Windahl.....	Mrs. Two
J.T. Wood.....	Mr. Zero

*U/S denotes Understudy*

---

# ORCHESTRA

---

Piano.....	Lori Kay Harvey*
Synthesizer.....	Dennis Davenport*
Drums.....	Tomasz Jarzecki

*\*Denotes Department of Music Faculty*

---

# SETTING

---

Here and the afterlife

An American city in the 1920's

*The production will be performed without an intermission.  
Fog will be used throughout this performance.*



# PRODUCTION STAFF

Chair, Department of Theatre & Dance .....	Christina Kirk
Audience Services Director .....	Elizabeth Saltzgiver
Faculty Technical Director .....	Patrick Stone
Production Manager .....	Kristen Cooperkline
Costume Shop Supervisor .....	Julia Ferreri
Light & Sound Supervisor .....	Doc Davis
Movement Coach/Voice Coach .....	Melinda Murphy
Administrative Assistant .....	Matt Wolfe
Manager of Ticketing and On-Campus Promotion .....	Alexx Conrad
Technical Director .....	Nick Hahn
Assistant Directors .....	Emily Bubeck, Lindsay Cluckey
Assistant Choreographer .....	Jessica Metcalf
Assistant Costume Designer .....	Miranda Cotman
Assistant Stage Managers .....	Annika Morrison, Elise Woods
Dramaturge .....	Katie Baum
Master Carpenters .....	Jalissa Frye, Braxton Maloney
Carpenter .....	Zach Hubler
Charge Artist .....	Melissa Schlecht
Paint Assistant .....	Alli Dembicki
Properties Master .....	Gunnar Schmidt
Properties Assistant .....	Megan Gillespie
Wardrobe Master .....	Thomas Martin
Wardrobe Assistant .....	Elise Wesley
Junior Drapers .....	Miranda Cotman, Alison Mogle
Stitcher .....	Erin Strumm
Master Electrician .....	Logan Stump
Assistant Master Electrician .....	Riley Mankin
Light Board Operator .....	John Diver
Sound A2/ Production Assistant .....	Lindsay Lisanti
Sound Assistants .....	Katie Baum, Yinghao Lin
House Manager .....	Alyssa Samuelson

## SCENIC STUDIO ASSISTANTS

Mikayla Burr	Zach Hubler
Ben Eckert	Natalie Love
Jalissa Frye	Braxton Maloney
Nick Hahn	Gunnar Schmidt

## SCENERY/PROPS CREW

Katherine Clifford	Bianca Gonzalez
Grace Dillon	Anne Guilbert
Trevin Dutey	Mary Nonno

## COSTUME SHOP ASSISTANTS

RoRo Cheng	Riley Mankin
Miranda Cotman	Allison Mogle
Megan Gillespie	Hannah Pohlman
Julianne Graffeo	Melissa Schlecht

## WARDROBE CREW

Zach Hubler	Carly Salyer
Braxton Maloney	

## LIGHT & SOUND ASSISTANTS

Ethan Brown	Jessica Palagano
Isabel Billinghamurst	Jacob Sundlie
Tori DeProspero	

## ELECTRICS CREW

Kalin Bennington	Matt Gottleib
Noah Boger	Lindsay Lisanti
Xavier Boyd	Shelby McSwords
Marissa Davis	Kailey Miller
Trevin Dutey	Haley Skinner
Desmond Fernandez	

## BOX OFFICE ASSISTANTS

Marissa Brown	Grace Hoover
Jessica Fannin	Emily Maddox
Tristan Gillia	Carly Salyer
Julianne Graffeo	Chris Smith

## USHERS

Emma Lou Andrews	Haley Skinner
Marissa Davis	Jacob Sundlie
Emma Lampe	Madelieine VanRiper
Hannah Roberts	Mathieu Wiesner
Marley Runk	



---

# BIOGRAPHIES

---

**Christina Kirk** (Artistic Director) is Chair of the Department of Theatre and Dance at Otterbein University where she has taught since 1992. Her directing credits include *The Living Theatre*, *New Dramatists*, and assisting Liviu Ciulei at Arena Stage. Favorite directing projects at Otterbein include *The Caucasian Chalk Circle*, *King Richard III* and *Nine*. She has also directed and performed for Otterbein Summer Theatre. Favorite summer projects include *The 39 Steps*, *Barefoot in the Park*, and *The Understudy*. She has performed at the Illinois Shakespeare Festival, the Nebraska Repertory Theatre, the Illinois Repertory Theatre, CATCO, and in the Joseph Jefferson award winning Kabuki Medea. Favorite roles include "B" in *Three Tall Women* at CATCO, Violet in *August: Osage County* at Otterbein and, more recently, the title roles in *Cleopatra* and *Claudiel* at Columbus Dance Theatre. *Claudiel* received the Artistic Excellence Award by the Greater Columbus Arts Council and *Cleopatra* was nominated for this same award. Her one-woman show, which premiered at Columbus Dance Theatre, was featured in the March 2006 Theatre Journal. And, most recently she had the pleasure of reading her daughter Margaret Veach's poetry in an evening of her work at Columbus Dance Theatre. Kirk has an M.F.A. in Directing from Columbia University and a B.F.A. in acting from the University of Illinois. She is also a certified yoga instructor.

**Lenny Leibowitz** (Director) is in his fourth year as a member of the Otterbein Theatre faculty. Since his arrival in Westerville, Lenny has directed *My Fair Lady*, *Into the Woods*, *Clybourne Park*, *Brighton Beach Memoirs*, *Top Girls*, and *Fiddler on the Roof*. As founding artistic director of Marvell Rep, Off-Broadway, Lenny directed 11 productions, including *The Threepenny Opera*, which received a Drama Desk nomination for Best Revival of a Musical. Other New York directing credits include the world premiere of Brian Yorkey's *Making Tracks*, which ran Off-Broadway at Rockefeller Center's Taipei Theater. Lenny has directed at some of the nation's leading regional theatres, including the Olney Theatre, the National Players, the Huntington Theatre's Breaking Ground Festival, and the New Harmony Theatre, where he was artistic director for four years. A Philadelphia native, he made his professional debut as a piano soloist with the Philadelphia Orchestra. He received his B.A. from Columbia University and his M.F.A. from Boston University. Member, SDC and AEA.

**Lori Kay Harvey** (Musical Director) has been a member of the Musical Theatre faculty at Otterbein for 10 years. She has music directed over 20 shows in central Ohio and throughout the US and has performed extensively as an actor/ singer/ dancer on both national and international tours and in numerous regional theatres. Tour credits: *Joseph and the Amazing Technicolor Dreamcoat* (National) with Patrick Cassidy and Deborah Gibson, *Grease* (Brazil); Regional theatre: *Beauty and the Beast* (Ordway Center, MN), *Jekyll and Hyde* (Arvada Center, CO), *The Taffetas* (Totem Pole Playhouse, PA), *Camelot* (Westchester Broadway Theatre, NY), *The Who's Tommy*, *Damn Yankees* (Mill Mountain Theatre, VA), *Brigadoon*, *Carousel*, *The Desert Song* (Media Theatre, PA), and *The Good War* (Weathervane Playhouse, OH). In 2014, she received nominations from both BroadwayWorld Columbus and the 10th Annual Jebby Awards for Best Actress in a Musical for her role as Diana in *Next to Normal* with the SRO Theatre Company in Columbus, OH. She won Best Musical Director from BroadwayWorld Columbus for *Les Misérables* at Otterbein in 2014. Concert credits: *Mozart Requiem* with The National Choral (Avery Fisher Hall), *Puttin' On the Ritz* with Erich Kunzel and the Cincinnati Pops Orchestra (Carnegie Hall and recorded on TELARC label), and *The Magical*



---

# BIOGRAPHIES

---

*Music of Disney* (Cincinnati Music Hall and Circle Theatre, IN, recorded on TELARC label and GRAMMY- nominated). Television credits: *Sex in the City*, *Guiding Light*, *Mel Torme's Christmas Special*, and various commercials and industrials. Education: BS in Voice Performance and Theatre from the Indiana University Jacobs School of Music. Member of Actor's Equity Association. Huge thanks to Lenny, Julianne, the cast, crew, and musicians for all your hard work on this haunting and unique show!!!

**Dan Gray** (Scenic Designer) is happy to be back at Otterbein for *Adding Machine*. Dan has designed numerous productions for Otterbein over the years including *Rumors*, *Clybourne Park*, *Julius Caesar*, *The Last Night of Ballyhoo* and *Phantom*. Dan's many regional theatre credits include designs for The George Street Playhouse, Capital Rep, Players Theatre Columbus, the Delaware Theatre Company, The Human Race Theatre Co. and CATCO. He also designs for many Central Ohio companies including BalletMet, Opera Columbus, The Dayton Ballet and The Columbus Symphony. Dan is the Resident Scenic Designer and an Associate Professor at The Ohio State University Department of Theatre.

**Julia Ferreri** (Costume Shop Supervisor) has been building and designing costumes for over fifteen years. Favorite Otterbein designs include *Fiddler on the Roof*, *The Crucible*, *Les Misérables*, and *The Full Monty*. Around Columbus, she has designed for Actors Theatre: *Winter's Tale*, *Merry Wives of Windsor*, and *Beaux Stratagem*. Available Light: *She Kills Monsters* and *Cymbeline*. Columbus Opera: *Il Tabarro* and *Gianni Schicchi*. Julia has also worked at Glimmerglass Opera, The Shakespeare Theatre in Washington DC, The Pennsylvania Shakespeare Festival, Utah Shakespeare Festival, and Berkshire Theatre Festival. Julia received her MFA in Costume Technology from Ohio University-Athens. She sends her love to Zak John for all his love and support over the years.

**T.J. Gerckens** (Lighting Designer) is the lighting design faculty member at Otterbein University, a USA829 Union Lighting Designer, and proud Otterbein Alum. At Otterbein, he has designed the lighting for *Damn Yankees*, Dance 2016: *The Goddess*, *The Crucible*, *Fiddler on the Roof*, *Is He Dead?*, Dance 2015: *Famously Yours...Forever*, Dance 2014: *Tell-Tale Poe*, and *Into the Woods*. As a freelance lighting designer, T.J. has been part of the design team for the Tony Award winner and MacArthur Foundation "Genius" Mary Zimmerman for the last 23 years. Most recently he designed Mary Zimmerman's production of *Rusalka* at the Metropolitan Opera in NYC, and productions including *The Odyssey* at the Oregon Shakespeare Festival, *Wonderful Town* at the Goodman Theatre in Chicago, *Guys and Dolls* in L.A., her world-premiere adaptation of *Treasure Island*, at the Lookingglass Theatre and Berkeley Rep and Dan Ostling's production of *Blood Wedding* at the Lookingglass. His lighting designs have been seen at regional theatres across the United States, on and off Broadway, and at the Metropolitan Opera. Internationally, he has designed in England, Australia, and at the LaScala Opera House in Milan, Italy. He has received numerous awards for his designs including New York's Drama Desk Award and Lortel Awards for his lighting of *Metamorphoses* on and off Broadway, Jefferson Awards for *The Odyssey* and *Metamorphoses* in Chicago, and an award for "Exemplifying the Art of Collaboration" given to the Zimmerman design team by Entertainment Design Magazine. You can see his designs for *Lucia di Lammermoor* and *La Sonnambula* on DVDs released by the Metropolitan Opera. T.J. comes to Otterbein after two years at the University of Toledo,



---

# BIOGRAPHIES

---

and prior to that he spent 17 years in production and executive management at CATCO. T.J. holds a BFA from Otterbein University and an MFA from Boston University. He is married to set designer, scenic artist, and Otterbein adjunct instructor Stephanie R. Gerckens. They have two children and live in Plain City.

**Ethan Brown** (Sound Designer) is a senior BFA Design/Technology major with a concentration in Audio Production. Previously, Ethan was Sound Designer for *Top Girls* and *The 2016 Launch: A Senior Cabaret*, and Mix Engineer for *The Addams Family*. "Thank you for spending your time watching this wonderful production!"

**Julianne Graffeo** (Stage Manager) is a senior BA Theatre major from Granville, OH. Previously, she has worked on *Dance 2016: The Goddess* (Stage Manager) and *Damn Yankees* (Assistant Director). Julianne has also worked at Weathervane Playhouse and Cortland Repertory Theatre. She would like to thank the incredible production team, cast and crew, for their hard work and dedication on such an important, relevant piece of theatre. She would also like to thank her family for their support all these years.

**Alexx Conrad** (Ticketing and On Campus Promotions Manager) is a 2016 Otterbein graduate with a BA in Theatre and is thrilled to be starting her second year on staff with the department. Outside of Otterbein, Alexx also works at the Westerville Public Library and is in her second semester at Kent State working towards a Master's in Library and Information Science. She is also involved with the Columbus National Eating Disorder Association's annual walk, the Columbus Young Professionals group, and was a camp counselor for Muskingum University's High School Summer Music Theatre program. In her spare time, Alexx can be found with her nose in a book on the couch with her dog, Trouble. She would like to thank Mom and Elizabeth for everything these past few years.

**Kristen Cooperkline** (Production Manager) was raised in Columbus and earned her Bachelor of Arts in History/Theatre from the College of Wooster and her Master of Arts in American Culture Studies at Bowling Green State University. She then received her MFA in Stage Management from the University of Illinois at Urbana-Champaign. Her Illinois credits include *Macbeth*, *La Calisto*, *Battle of Angels*, *February Dance*, and *Our Town*. Following her graduation, Kristen served as the Event Coordinator for the first-ever American College Dance Festival Association South Regional Conference as well as a stage manager for Bebe Miller Company. She recently returned to the University of Illinois at Urbana-Champaign as the production stage manager for *February Dance 2016*, featuring the original work "Baldwin/NOW," choreographed by Ping Chong.

**Dennis Davenport** (Synthesizer) is Chairperson of the Department of Music at Otterbein. In addition to administrative work, he teaches musical theatre history, directs the Otterbein Singers, and, with colleague Jim Bates, leads the Otterbein Vienna travel course in May. Recent production work includes music direction for *They're Playing Our Song* and piano for *My Fair Lady* for Otterbein Summer Theatre.

**Doc Davis** (Lighting and Sound Supervisor) was born and raised in Pearl, MS. After receiving a BA in Theatre from Belhaven University, he continued his education at the University of Illinois at Urbana-Champaign. While completing his MFA in Sound



---

# BIOGRAPHIES

---

Design, he worked as a sound engineer at the Krannert Center for the Performing Arts, assisting such acts as Mark Morris Dance Company, The National, Derek Trucks Band, Keb' Mo', Ralph Lemon Dance Company, and more. After receiving his MFA, he acted as a Mastering Engineer, Sound Designer, A1, Location Recordist, Video Designer, and Re-Recording Mixer for various theaters, companies, and films. Since moving to Columbus, OH, Davis has worked at Otterbein University as Lighting and Sound Supervisor and Events Coordinator. He continues to design and mix shows many times a year and especially loves sharing his approach to Audio Engineering and Sound Design to students of all ages!

**Tomasz Jarzecki** (Drums/ Percussion), a graduate of University of Cincinnati's College-Conservatory of Music, can be seen regularly playing drums/percussion for Otterbein University's theatre productions, OSU opera productions, Dan Reese's "Soulful Standards" jazz trio as well as maintaining a busy teaching schedule. He has played drums for two seasons of the national revival tour of *Oklahoma!* and shared his talents in many local bands, including Juke Joint Saints, Christy Angeletti Band, Ray Massa's Eurorhythms, In Full Swing Big Band, Clavesonic Latin Jazz Project, Big Rockin' Blues Band, and others.

**Melinda Murphy** (Movement/Voice Coach) teaches Alexander Technique and Feldenkrais Method® in the Otterbein Theatre and Dance Department, with application to movement, voice, characterization, singing, and dance. Melinda is one of the few teachers trained in both methods; she combines them in her private practice in Columbus, and in classes and seminars for performing artists at other Ohio colleges. Since coming to Otterbein, she also trained to teach Fitzmaurice Voice work for its specialized tools for improving the voice and breath. Melinda has coached Otterbein productions since the turn of the century. She has also coached equestrians, figure skaters, musicians, and competitive barbershop quartets and choruses including the two-time international gold medalist Southern Gateway Chorus.

**Patrick Stone** (Assistant Professor/Faculty Technical Director) began his tenure as the Technical Director at Otterbein in the Fall of 2014. He spent the previous seven years at the University of Arkansas as the Faculty Technical Director. He holds a Masters of Fine Arts from the University of South Dakota in Vermillion and a Bachelors of Arts from Doane College in Crete, Nebraska. He teaches classes in stage-craft, properties design and construction, metal working, technical direction, wood working, and motion scenery. Patrick also enjoys consulting with local and regional theatres ranging from professional through junior high school. When not in the Scenic Studio or backstage Patrick enjoys any activity that gets him outdoors. Lately, he has been exploring the use of blacksmithing in props construction. Patrick fears neither robots nor clowns, but please do not ask him about mimes.

**Katie Baum** (Dramaturge and Sound Assistant) is a sophomore BA Theatre major from Painesville, OH. Previously, she has been a Set Crew member for *The Addams Family* and *Damn Yankees*, and a Costume Crew member for Dance 2016: *The Goddess*. "It has been an honor to work on this amazing show, and I'm very grateful for the opportunities that Otterbein has given me."



---

# BIOGRAPHIES

---

**Emily Bubeck** (Assistant Director) is a senior BA Theatre and Women's Gender and Sexuality Studies double major from Fairfax, VA. Previously, she was the Dramaturge for *Rumors* and *The Crucible* as well as Assistant Director for *Top Girls*. "Major congratulations to the entire cast, crew and creative team of *Adding Machine!* It was such a joy to work with each and every one of you on my last main stage production."

**Kevin Buckley** (Ensemble, U/S: Boss/Charles/Fixer) is a sophomore BFA Musical Theatre major from Old Bridge, NJ. Previously, he has performed in *Damn Yankees* (Ensemble) and *Dance 2016: The Goddess*. "This show has been an incredible way to start off my year and I'm so grateful to share it with people. Thanks to all my friends and family for their support!"

**Cameron Chang** (Ensemble) is a sophomore BFA Musical Theatre from San Diego, CA. Previously, he performed in Otterbein's *Damn Yankees* (Rocky) and an off-campus production of *Private Eyes* (Matthew). Cameron also performed in *King Leo's New Clothes* as King Leo at Legoland in California, and is a member of the Improv Troupe here at Otterbein. "Thanks to Lenny and Lori Kay for their amazing guidance and optimism during this process."

**Lindsay Cluckey** (Assistant Director) is a junior BFA Design/Technology major and Arts Administration minor from Toledo, OH. Previously, she has served as Assistant Stage Manager for *Damn Yankees*, *Top Girls*, and *The Crucible*. "Many thanks to Lenny and Emily for teaching me the ways of directing; and to my mom, dad, Matt, and Kendra for your endless support in all that I do."

**Miranda Cotman** (Assistant Costume Designer) is a junior BA Theatre major and Studio Art minor from Westerville, OH. Previously, she has worked as Wardrobe Master for *My Fair Lady* and *They're Playing Our Song*, and Properties Master for *Rumors*. Miranda will be serving as the Assistant Costume Designer for *Dance 2017: Move Me* and Makeup Supervisor for *Drag Show 2017*.

**Alli Dembicki** (Paints Assistant) is a senior BFA Design/Technology major from Pemberville, OH. Previously, she has worked as Charge Artist for *Rumors* and *Damn Yankees*, and Props Master for *The Addams Family*.

**Nick Hahn** (Technical Director) is a senior BA Theatre and Literary Studies double major from Columbus, OH. Previously, he has worked on *Dance 2016: The Goddess* (Technical Director), *The Addams Family* (Assistant Technical Director), and *Fiddler on the Roof* (Master Carpenter). "Thank you to my friends and family for putting up with my hectic schedule; and to Stone for his guidance. Hail and well met!"

**Zach Hubler** (Carpenter) is a freshman BFA Design/Technology major from Columbus, OH. Previously, he has worked as a Scenic Studio Assistant on *Rumors*.

**Noël Isaacson** (Mrs. One, U/S: Mrs. Zero) is a junior BFA Musical Theatre major from Atlanta, GA. Previously, she performed in *My Fair Lady* (Ensemble), *Damn Yankees* (Doris), *Fiddler on the Roof* (Ensemble) and *The Crucible* (Susanna Walcott). She sends a huge thank you to the cast and crew for all their hard work on this show; and as always, she sends a shout out to Jax, Mom, Dad, and Drew for their endless support. "I love you."

---

# BIOGRAPHIES

---

**Yinghao Lin** (Sound Assistant) is a junior BA Theatre and Philosophy double major from Fuzhou, Fujian, China. Previously, he has worked on *Rumors* (Assistant Director) and *Top Girls* (Wardrobe Assistant).

**Jack Labrecque** (Mr. Two, U/S: Mr. Zero) is a senior BFA Acting major from Brunswick, ME. Previously, he has performed in *My Fair Lady* (Henry Higgins), *Damn Yankees* (Applegate) and *The Addams Family* (Gomez Addams). "A special thank you to my parents who have supported me through four long years of training."

**Lindsay Lisanti** (Production Assistant) is a freshman BA Theatre major with an Arts Administration minor from Louisville, KY. "I'm very excited to be involved in my first production at Otterbein!"

**Riley Mankin** (Assistant Master Electrician) is a junior BFA Design/Technology major and Studio Art minor from Hilliard, OH. Previously, she has worked as Charge Artist for both Otterbein Summer Theatre 2017 productions, *My Fair Lady* and *They're Playing Our Song*. "I would like to thank my family. They're pretty cool."

**Thomas Martin** (Wardrobe Master) is a freshman BFA Design/Technology major from Worthington, OH. Previously, he has worked on off-campus productions of *Once on This Island* and *A Midsummer Night's Dream* (Costume Designer) and Big River (Wardrobe Master). "Stay in school, kids."

**Jessica Metcalf** (Assistant Choreographer) is a junior BA Theatre and Public Relations double major and Dance minor from New Albany, OH. Previously, she has worked on *Rumors* (House Manager) and performed in Dance 2016: *The Goddess* and *Fiddler on the Roof* (Ensemble).

**Annika Morrison** (Assistant State Manager) is a sophomore BFA Design/Technology major and Creative Writing minor from Ann Arbor, MI. Previously, she has worked on Dance 2016: *The Goddess* (Assistant Stage Manager).

**Trey Plutnicki** (Boss/Fixer/Charles) is a junior BFA Musical Theatre major from River Edge, NJ. Previously, he has performed in *Damn Yankees* (Sohovik) and Dance 2016: *The Goddess*. He would like to thank his family, friends, the cast, crew, creative team, and Maxwell Bartel for their love and support. "But, efficiency is the first consideration."

**Lottie Mae Prenevost** (Mrs. Zero) is a senior BFA Musical Theatre major from Chelsea, MI. Previously, she performed in *Damn Yankees* (Meg Boyd) and *The Addams Family* (Alice Beineke). Lottie has also performed at Wagon Wheel Center for the Arts as Mother in *Ragtime*. "Endless love and gratitude to Mom, Dad, Beau, and Claire. Many thanks to Lenny, Lori Kay, the entire production team, cast, and crew, and so much love to the babes of #20ATeeten."

**Reuben Reese** (Mr. One, U/S: Shrdlu) is a junior BFA Musical Theatre major from Atlanta, GA. Previously, he has performed in *The Addams Family* (Caveman) and *Fiddler on the Roof* (Russian Soloist). Reuben is eternally grateful to be a part of this weird and beautiful production. He would also like to thank his friends and family for their love and support, especially his mother and Christopher.



---

# BIOGRAPHIES

---

**Kenneth Remaklus** (Shrdlu) is a sophomore BFA Musical Theatre major from Cincinnati, OH. Previously, he has performed in *Damn Yankees* (Ensemble) and the Otterbein Summer Theatre production of *My Fair Lady* (Freddy). Kenneth will perform in Weathervane Playhouse's upcoming production of *Meet Me in St. Louis* as Lon Smith. He would like to thank Lenny for the opportunity to play such a complex and challenging role.

**Alyssa Samuelson** (House Manager) is a sophomore BA Theatre major with Dance and Arts Administration minors from Russell, PA. Previously, she has worked on the Otterbein Summer Theatre production of *My Fair Lady* (Assistant Stage Manager) and the fall production of *Rumors* (Assistant Stage Manager). She was also the Assistant Production Manager for Otterbein Summer Theatre 2017. "I would like to thank my family for their constant support!"

**Melissa Schlecht** (Charge Artist) is a senior BFA Design/Technology major from Potsdam, OH. Previously, she has worked on *Rumors* (Draper) and Dance 2016: *The Goddess* (Assistant Costume Designer). Melissa recently served as a Production Intern at Totem Pole Playhouse this past summer. "I'm excited about my senior year here at Otterbein. Much love and thanks to my friends and family, especially the Theatre Fam."

**Emma Shine** (Ensemble) is a sophomore BFA Musical Theatre major from Minneapolis, MN. Previously, she has performed in the Otterbein Summer Theatre production of *My Fair Lady* (Eliza Doolittle).

**Erin Stumm** (Stitcher) is a freshman BFA Design/Technology major from San Diego, CA. Previously, she has worked at San Diego Musical Theatre as Wardrobe Mistress/Head Dresser on *Damn Yankees* and *9 to 5*, and as Dresser for *White Christmas* (Dresser). Erin would like to thank her friends and family for their support.

**Logan Stump** (Master Electrician) is a sophomore BFA Design/Technology major from Dublin, OH. Previously, he has worked on *Rumors* (Props Artisan), *Damn Yankees* (Assistant Master Electrician), and the Otterbein Summer Theatre production of *They're Playing Our Song* (Props Assistant). He is excited for the opportunity to work on such an amazing show. He would like to thank his Mom and his close friends.

**Payton Tevis** (Daisy Dorothea Devore) is a sophomore BFA Musical Theatre major from Erie, PA. Previously, she has performed in *The Mental Children* (Edith). "I would like to thank my Mom, Dad, Griffin, and Raegan for the endless support."

**Cecilia Trippiedi** (Ensemble, U/S: Daisy Dorothea Devore) is a sophomore BFA Musical Theatre major with a Dance concentration from Orland Park, IL. Previously, she has performed in Dance 2016: *The Goddess* and *Damn Yankees* (Ensemble). Cecilia is humbled to be able to work alongside such incredible humans in this spectacular production of *Adding Machine*. She sends thanks to Mom, Dad, Grace, Laura, David, and her beautiful classmates for their constant and unfailing love.

**Elise Wesley** (Wardrobe Assistant) is a sophomore BFA Design/Technology major from Westerville, OH. She will serve as the Costume Designer for the upcoming classroom

---

# BIOGRAPHIES

---

project, *Who's Afraid of Virginia Woolf?* Elise has also worked at the Short North Stage on *Angels in America: Parts 1 and 2* as the Wardrobe Master.

**Leah Windahl** (Mrs. Two) is a senior BFA Musical Theatre major from Cleveland, OH. Previously, she has performed in the Otterbein Summer Theatre production of *They're Playing Our Song* (Sonia), as well as *The Addams Family* (Wednesday Addams) and *Damn Yankees* (Sister). "A big thank you to Lenny and Lori Kay for this opportunity, and to my parents for always being my biggest supporters. Much love."

**J.T. Wood** (Mr. Zero) is a senior BFA Musical Theatre major from Indianapolis, IN. Previously, he performed in *Rent* (Collins), *Is He Dead?* (Millet) and the Otterbein Summer Theatre production of *Brighton Beach Memoirs* (Eugene). J.T. also performed at the Utah Shakespeare Festival in *Guys and Dolls* and *The Greenshow* this past summer. "Thank you so much to Lenny for this opportunity. Shoutout to my family for their unfathomable amount of support. God is good!"

**Elise Woods** (Assistant Stage Manager) is a junior BA Theatre and Creative Writing major from Waxhaw, NC. Previously, she has worked on the Otterbein Summer Theatre production of *My Fair Lady* (Assistant Director) and *Reap the Grove* (Stage Manager). She will be the Company Manager for *Festival 2018* this winter. "A huge thank you to the entire company for an invigorating and exciting experience! Much love to friends and family."



# HONORARY CAST LIST

Otterbein University Department of Theatre & Dance honors those who have given so generously during the 2017-18 Academic Year.

Members who give annually at the Director and Producer level are included in the Joanne Van Sant Society.

*Thank you for contributing to the education of our students!*

---

## Producer (\$5,000+)

---

Victor G. Boft  
 Alan & Christy Coupland  
 Hearing Health Solutions  
 Nevalyn Fritsche Nevil  
 Ohio ENT & Allergy Physicians

---

## Director (\$1,000-\$4,999)

---

Kathy A. Krendl & Richard S. Gilbert  
 Al & Louise Minor  
 Ruth E. Pifer

---

## Designer (\$500-\$999)

---

Thomas M. Bay & Martha Dean Kerr  
 Brian Day  
 William L. & Sonya Stauffer Evans  
 Mark N. Peters  
 Barbara M. Ruppel  
 Timothy Veach & Christina M. Kirk

---

## Diva (\$250-\$499)

---

Lawrence & Connie Ackert  
 Kay Atkinson Ball  
 Edmund L. & Diane Daily Cox  
 Petie Dodrill  
 David C. & Nancy Smith Evans  
 Sandra Freer  
 John & Terry Geary  
 Mark Havanec  
 John T. & Eileen Fagan Huston

Douglas R. & Mary Pat Knight  
 Richard & Angie Peters  
 Barbara Powell  
 Paul S. & Sheila Reiner  
 Douglas R. Smeltz  
 Jon & Joyce Stonebraker  
 Sarah Whybrew  
 Norma F. Worley

---

## Star (\$100-\$249)

---

Charles & Rebecca Ansley  
 Anonymous  
 Fred & Patricia Baum  
 Richard O. & Linda Spicer  
 Beckner  
 Jane Albright Blank  
 Troy A. & Kathleen Bonte  
 Clay Cormany & Rebecca  
 Coleman Princehorn  
 Mike & Debra Collins  
 Roy & Joy Croy  
 John L. & Sharon Davis  
 Margaret Morgan Doone  
 Margaret English Duffy  
 Jeffrey & Gretchen Glasgow  
 Mark S. Granger  
 Kenneth, Debra & Emily  
 Hawking  
 Vince & Gayle Herried

Vinny Herwig  
 Jane Horn  
 Jacque Hoyt  
 Herbert & Jeanne Johnston  
 Thomas & Barbara Knight  
 David Coffman  
 Otto & Janet Laster  
 Chuck & Connie Layne  
 Bernard Losekamp  
 William Lyons  
 Pearson McWane  
 William & Harriet Merriman  
 Jack & Peggy Moreland  
 Dennis & Marjorie Munger  
 Nationwide Foundation  
 Alan E. & Carol S. Norris  
 Dennis & Sue Ann Norton  
 John W. & Denise Alford Orr  
 William Ostrander & Jil Schultz

Brad Ostroff  
 Jim & Martha Owens  
 The Parrish Family  
 Eric & Elaine Peters  
 Jeff & Veronica Reutter  
 Marvin & Juanita Rusk  
 Elizabeth A. Salt  
 Louise Stouffer Schultz  
 Alan & Linda Smith  
 David & Beckey Stamm  
 John & Sally Stefano  
 J. Mikal & Janice Townsley  
 John & Carol Volpi  
 Kenneth R. Wadkins  
 Richard E. White  
 Sara Willson  
 Laura Cean Wilson  
 Craig & Carol Young

# HONORARY CAST LIST

## Supporting Actor (\$50-\$99)

Erik & Tina Aisel	Barbara George	Phyllis & Martin Potts
John & Diane Anderson	Sean & Julie Gillia	Charles & Marion Rees
Kay Ball	Charles & Charlene Hammond	Ronald & Joyce St. Pierre
Bill & Judyth Barr	Elliot B. & Ruth Hodgdon	Richard K. & Tirtzah Sandor
Dan & Linda Bevan	Douglas & Joan Hoover	David & Laura Sewalk
James V. Blazek	J. Thomas & Kathleen Jones	Albert & Louise Siegel
Linda Blicke	Walter & Connie Kobalka	Rex & Jane Sprague
Carl & Carol Boehm	Joseph & Elizabeth Kolmer	Carol Spathelf
Len & Sharon Bussard	Bill LaTaille	Bill Stoddard
Sharon Buxton	Richard & Catherine Loveland	Richard & Jeanette Robinson
Brian Carlisle	Frank & Karen Martens	Thomas
Wallace & Barbara Cash	Gary A. & Barbara J. McKenzie	Madelon Timmons &
Ted Chaney	Joan McKinney	Bill Miller
Leonard & Roberta Clark	Ted & Sally Messner	Michele Wilson Toney
Mike & Debra Collins	Carl D. & Helen W. Miller	Roger & Margaret Lloyd Trent
Kelly Davie	Jerry & Judi Miller	Michael Vehonsky
Barbara Daye	Michael & Nancy A. Miller	David B. & Joyce Shannon
Richard & Diane Demlow	Tommie Miller	Warner
L. Thomas & Mary Alice	OCLC Online Computer	Jay & Barbara Wilcox
Dillman	Library Center, Inc.	David & Ann Ziegel
Jim & Di Erickson	James E. Paxton	

## Extra (\$10-\$49)

Anonymous	Alzada Gallagher	Jack & Kathy Monts de Oca
Elizabeth J. Arnold	Mark A. Geary	Patricia Casey Mynster
Benjamin H. Bennett	Edwin A. Geer	Luanne Shelby
Elizabeth A. Burrier	John & Alice Heller	Paul & Alyce Sheridan
Kenneth Carter	Kimberly Fippin Hoessly	Frank Shyja
John & Judith Cashman	Ron & Mary Hooker	Ronald G. & Linda Simpson
Larry & Margaret Cepek	Richard & Christine Jones-Leavy	James Tarpoff
Bradford & Michelle Chaklos	Margaret Lares Kadunc	James E. & Carol Carpenter
Judy & Mike Christian	Gregory Koltun	Waugh
Richard & Marie Dilley	Barbara Limbun	Thomas & Susan White
Barbara Donohue	Don Lund	Grace Barnes Wiley
Alyce Douce Elbert	Barbara Glor Martin	Donald & Jane Wilson
Mary Forster	Tom & Mary Ellen Miller	Roger L. Wilson
Lawrence Friedman	William K. Miller	John A. & Mary Lou Wolfe





OTTERBEIN  
UNIVERSITY

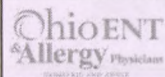
DEPARTMENT OF THEATRE & DANCE PRESENTS

## DANCE 2017: MOVE ME

Artistic Direction by Stella Hiatt Kane

November 16-19

Fritsche Theatre at Cowan Hall



Call or Click for Tickets

614.823.1109 [otterbein.edu/drama](http://otterbein.edu/drama)

## Ron Lykins CPA's

If you are looking for a blend of personal service and expertise, you have come to the right place! We offer a broad range of services for individuals, business owners, executives and independent professionals. Our rates are competitive with other premier CPA firms. We are experienced and we're friendly. We can help with decedents final tax filings.

**Call now for a free consultation.**

Our firm is one of the top 20, as reported by Business First in central Ohio. We provide services to our clients in 38 states. We provide outstanding service to our clients because of our dedication to the three underlying principles of **professionalism, responsiveness and quality.**

### Individual Services

Personal Financial Planning  
Estate Planning

### Tax Services

Tax Preparation  
Tax Planning  
Tax Problems  
Decedent Tax Return Preparation

### Business Services

Small Business Accounting  
Payroll

### QuickBooks Services

"Ron and his staff are the best!"

"I like everything you do. Very personal attention and great communication every step of the way."



45 W. Main St. Westerville, OH, 43081  
Email: [lykins@ronlykinscpas.com](mailto:lykins@ronlykinscpas.com)

Call: (614) 891-1041

[www.ronlykinscpas.com](http://www.ronlykinscpas.com)

**Good Medicine Productions  
Presents**



Experience *A Christmas Carol*  
in this interactive walking tour  
performance in Uptown Westerville

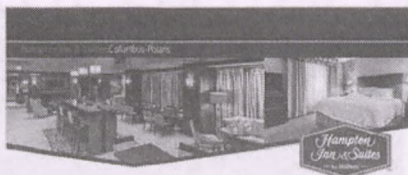
**PERFORMANCES**

**Saturday & Sunday Afternoons**

**Nov. 25-Dec. 17, 2017**

**\$22 adults, \$10 Students & Kids**

For Tickets and Tour Times Visit  
**GoodMedicineProductions.org**



You have a **friend** in Columbus, Ohio!

Clean and Fresh Hampton Bed.™

Free hot breakfast.

TV features.

Room amenities.

Recreational enjoyment.

Meeting facilities.



8411 Polaris Place  
Columbus, OH 43240  
Ph: 614.895.8400 • Fax: 614.895.8410  
1.800.HAMPTON®  
[www.hamptoninnpolaris.com](http://www.hamptoninnpolaris.com)



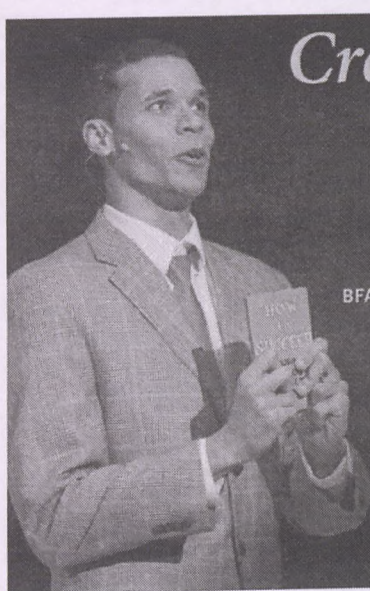
**WESTERVILLE 35 YEARS  
SYMPHONY**  
AT OTTERBEIN UNIVERSITY

Come celebrate the opening of the  
Westerville Symphony's 35th season  
with Gustav Holst's *The Planets*.

**October 22, 2017 | 5 pm**

FRITSCH THEATER AT COWAN HALL | OTTERBEIN UNIVERSITY





# Create Your Future OTTERBEIN

- Nationally Recognized Professional Training Program
- Internship Placement with Industry Leaders
- Networking and Professional Connections
- Individual Attention in Small Classes

BFA: Design/Technology • Musical Theatre • Acting BA: Theatre

Photo Jordan Donica '16 (*Hamilton* National Tour/  
*Phantom of the Opera* Broadway)



**OTTERBEIN**  
UNIVERSITY

DEPARTMENT OF  
THEATRE & DANCE

For more information:  
• [Otterbein.edu/Theatre](http://Otterbein.edu/Theatre)  
• 614.823.1657  
• [mtwolfe@otterbein.edu](mailto:mtwolfe@otterbein.edu)

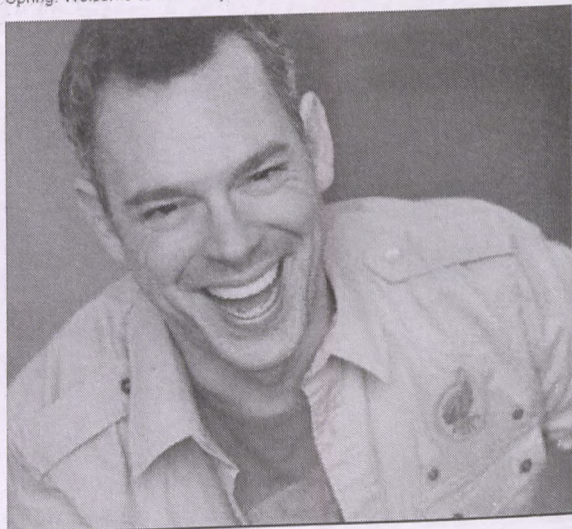
**Find us on social  
media for daily  
updates about our  
students, faculty,  
and alumni -  
there's always  
something new to  
share!**



**Otterbein University Theatre and Dance**

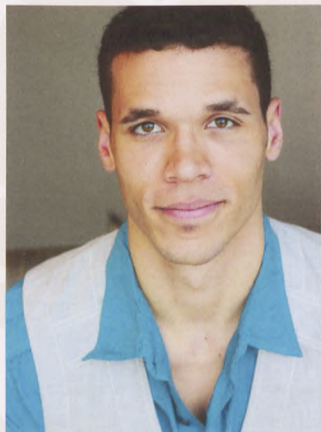
August 30 at 6:45pm

Meet Thom Christopher Warren, our newest member of the #Otterbein Theatre and Dance faculty! Thom comes to us straight from his 15 year run with "The Lion King" on Broadway! This year, Thom is teaching our Senior Showcase and Internship class, Junior MT Studio, American Musical Theatre History, and will be directing "Thoroughly Modern Millie" in the Spring. Welcome to the family, Thom!



# STANDING IN THE SPOTLIGHT

Your generosity has helped so many talented students achieve their dreams.



*"I feel so much more ready than I ever anticipated I would. Otterbein got me in the right mindset to hit the ground running."*

*—Jordan Donica '16*

Made Broadway debut as "Raoul" in *Phantom of the Opera* within one month of graduating.

Tony winners.  
Emmy winners.  
Broadway.  
Silver screen.  
Countless awards.  
Enumerable standing ovations.

Now we ask you to **STAND** with us to prepare the next generation of theatre artists.

*The Performing Arts Fund supports...*

## **Scholarships**

Ensure the most promising talent across the country can benefit from an Otterbein education.

## **Technical and Facility Support**

Critical upgrades that include new rigging, stage floor and communication systems ensure the caliber of Otterbein productions.

## **New Works**

Help introduce new works to central Ohio by bringing guest artists, residencies and production support to our nationally acclaimed program.



WHERE WE  
**STAND** MATTERS

The Campaign for Otterbein's Future:  
Investing in Students First

Learn more about the Performing Arts Fund at [www.otterbein.edu/STAND](http://www.otterbein.edu/STAND)



## LATECOMER'S POLICY

The House Manager may seat latecomers only during times which minimize disruption of the performance. The management accepts no responsibility for inconvenience to latecomers and can make no adjustment because of it.

## FIRE NOTICE

The exits are indicated by red lights. In the event of fire or any other emergency, please do not run — walk to the exit as directed by theatre management.

## CAMERAS AND RECORDING DEVICES

The use of recording equipment and the taking of photographs during the performance are strictly prohibited.

## RESTROOMS

Cowan Hall: Restrooms are available on the first floor of Cowan Hall and in the basement. A handicapped accessible platform lift is located at the north stairwell in Cowan Hall. Please see a front of house attendant for assistance with the lift. Additional restrooms are located across the street in Roush Hall on the north side of each floor.

Campus Center: Restrooms are located on the ground level of the Campus Center. An elevator is available for transportation between floors.



ASSISTIVE LISTENING DEVICES ARE AVAILABLE  
AT THE BOX OFFICE UPON REQUEST.