

Otterbein University

Digital Commons @ Otterbein

2015 Summer Theatre

Productions 2011-2020

6-18-2015

The Nerd

Otterbein University Theatre and Dance Department

Follow this and additional works at: https://digitalcommons.otterbein.edu/summer_production_2015



Part of the [Acting Commons](#), [Dance Commons](#), and the [Theatre History Commons](#)

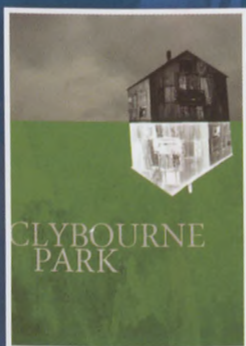
Recommended Citation

Otterbein University Theatre and Dance Department, "The Nerd" (2015). *2015 Summer Theatre*. 2.
https://digitalcommons.otterbein.edu/summer_production_2015/2

This Book is brought to you for free and open access by the Productions 2011-2020 at Digital Commons @ Otterbein. It has been accepted for inclusion in 2015 Summer Theatre by an authorized administrator of Digital Commons @ Otterbein. For more information, please contact digitalcommons07@otterbein.edu.



Otterbein SUMMER THEATRE program



OTTERBEIN
UNIVERSITY

Celebrate
1940 75 years of value 2015



OAKLAND NURSERIES

*75 Years... Sharing the
Spotlight with Mother Nature
since 1940!*

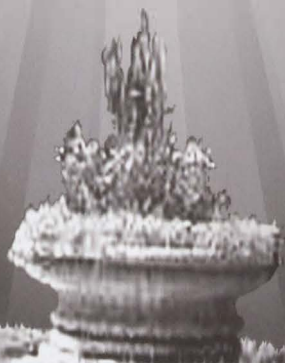
www.oaklandnursery.com

Columbus:
1156 Oakland Park Ave.
614-268-3511

Delaware:
25 Kilbourne Rd.
740-369-5454

Dublin:
4261 W. Dublin-Granville Rd.
614-874-2400

New Albany:
5211 Johnstown Rd.
614-917-1020



"32 Acres of Gardening Pleasure"



OTTERBEIN SUMMER THEATRE

The Nerd

by

LARRY SHUE

Directed by
MELISSA LUSHER

Scenic Design by
DAN GRAY

Costume Design by
JULIA FERRERI

Lighting Design by
ANDY BAKER

Sound Design by

Stage Managed by DOC DAVIS
REBECCA SCHAFER

June 18-21, 25-27, July 2 & 3, 2015
ONSTAGE in the Fritsche Theatre at Cowan Hall
30 S. Grove St., Westerville

THE NERD

is presented by special arrangement with Dramatists Play Service, Inc., New York.

CAST LIST

Willum Cubbert.....	Jeff Gise
Tansy McGinnis.....	Afton Welch
Axel Hammond.....	Connor Allston
Warnock Waldgrave	Evan Moore-Coll
Clelia Waldgrave.....	Lauren DiMario
Thor Waldgrave.....	Kellan Behrens
Rick Steadman	Ben Folts

PRODUCTION STAFF

Department Chair/Co-Producer	John Stefano
Co-Producer/Audience Services Director.....	Elizabeth Saltzgeber
Technical Director	Patrick Stone
Production Manager	Kristen Cooperkline
Scene Shop Supervisor	Frank Cirivello
Costume Shop Supervisor	Julia Ferreri
Light & Sound Supervisor/A1.....	Doc Davis
Movement Coach	Melinda Murphy
Assistant Director.....	Lauren Kent
Assistant Stage Manager	Tara Smith
Master Carpenters.....	Ian Hawthorne, Mason Mickley
Charge Artist.....	Tess Webster
Properties Master	Alli Dembicki
Wardrobe Master.....	Nikki Solomon
Wardrobe Assistant.....	Karen Crenshaw
Master Electrician/ Light Board Operator	Tori DeProspero
Technical Apprentices	Karen Crenshaw, Natalie Love
Deck Crew	Natalie Love, Dana Cullinane, Aubree Tally
Front of House Manager	Sarah Simon
Box Office Manager.....	Heidi Olander
Box Office Assistants	Jeff Gise, Sydney Smith
Office Assistant.....	Erin Ulman

*The videotaping or other video or audio recording of this production
is strictly prohibited.*

SETTING

The action takes place in the second floor apartment of Willum Cubbert in Terre Haute, IN. Willum rents the two first floor apartments to his best friend, Axel, and his girlfriend, Tansy.

ACT I

November 4, 1984

INTERMISSION

ACT II

Scene 1: Six days later

Scene 2: The following day

PLAYWRIGHT BIOGRAPHY

Larry Shue was the author of *The Nerd*, which ran successfully on Broadway with a National Tour and many productions overseas. His play *Wenceslas Square* was performed Off-Broadway at the New York Shakespeare Festival. *Wenceslas Square* is part of "Best Play of 1987-1988," published by Dodd, Mead and Company. He also wrote *The Foreigner*, which, following a record-breaking run of seven hundred performances at New York's Astor Place Theatre, was produced successfully internationally. New Orleans born, Kansas-raised, Larry Shue was a graduate of Illinois Wesleyan U. and the Harlequin Dinner Theatre in Washington. He joined Milwaukee Rep in 1977, appearing in a wide variety of productions. He created roles in works by Amlin Gray, Andrew Johns, Tom Cole, himself, and David Mamet, who dedicated the published version of his *Lakeboat* to Mr. Shue and to the play's first director, John Dillon. Mr. Shue was also the author of *Grandma Duck Is Dead* and, as an actor, he assumed the title role in *The Foreigner* after Anthony Heald and originated the role of the Rev. Dr. Crisparkle in the New York Shakespeare Festival's *The Mystery Of Edwin Drood* at the Delacorte Theatre. All of Larry's plays have been published by Dramatists Play Service and Shuebiz, a compilation of Larry's work, inaugurated the Milwaukee Repertory Theatre's Cabaret. He was killed in a plane accident in 1985.

SPECIAL THANKS

Bon Appetit

Robert Behrens

The Ohio State University

Otterbein University Service Department

Otterbein University Courtright Memorial Library

BIOGRAPHIES

Melissa Lusher (Director) teaches acting, speech, and dialects at Otterbein's Department of Theatre and Dance, where she also serves as the resident speech/dialects coach for all productions. She holds an M.F.A. in Acting from the combined program of Carnegie Mellon University and the Moscow Art Theatre in Russia, and a B.F.A. in Acting from Carnegie Mellon. Melissa made her directorial debut in 2012 with Otterbein Theatre's production of *Spring Awakening*, which was named one of the Best 10 Shows of 2012 by The Columbus Dispatch. She also directed the 2013 Classroom Project production of *No Exit* and last spring's production of *The Greeks: The Murders*. She is thrilled to be directing Otterbein's next season opener, *Rent*. Melissa extends her deepest gratitude to the entire production team of *The Nerd* for their superb work and to the brilliant cast for filling the process with such hilarity and joy. Special thanks to her husband, Joe, and her son, Lucas, for letting Mommy have a blast playing with deviled eggs and paper bags!

Dan Gray (Scenic Designer) happily re-joins OST for the summer. Dan has designed numerous productions for Otterbein over the years including *Julius Caesar*, *The Last Night of Ballyhoo* and *Phantom*. Dan's many regional theatre credits include designs for The George Street Playhouse, Capital Rep, Players Theatre Columbus, the Delaware Theatre Company, The Human Race Theatre Co. and CATCO. He also designs for many Central Ohio companies including BalletMet, Opera Columbus, The Dayton Ballet and The Columbus Symphony. Dan is the Resident Scenic Designer and an Associate Professor at The Ohio State University Department of Theatre.

Julia Ferreri (Costume Designer/Costume Shop Supervisor) worked for The State University of New York at Potsdam as the Costume Shop Manager before joining the Otterbein University staff. She has also worked at Glimmerglass Opera, The Shakespeare Theatre in Washington DC, The Pennsylvania Shakespeare Festival, Utah Shakespeare Festival, Heritage Theatre, and Berkshire Theatre Festival. Julia received her MFA in Costume Technology from Ohio University-Athens.

Andy Baker (Lighting Designer) is a graduate from Otterbein University (2009) and is excited to return for his 8th Summer Theatre Season. Andy has served as lighting designer for over 20 productions at Otterbein that include *The Greeks: The Murders*, *The Full Monty*, *The Fantasticks*, *The 39 Steps*, *Little Shop of Horrors*, *Spring Awakening*, *The 25th Annual Putnam County Spelling Bee*, *Altar Boyz*, *My Way*, and *The Caucasian Chalk Circle*. In 2009, Andy was recognized by the United States Institute of Theater Technology by receiving the National Undergraduate Lighting Design Award for his work on *The Caucasian Chalk Circle*. From 2009 to 2012, Andy worked as the resident lighting designer for Shadowbox Live while also serving as an adjunct instructor at Otterbein. Currently, Andy is in his final year as a graduate student at The Ohio State University, working towards an MFA in Lighting Design. His work at OSU includes *Trouble in Mind*, *City of Angels*, and the original work *There is No Silence*. Andy would like to thank his friends and family for their support.

Doc Davis (Sound Designer/Lighting and Sound Supervisor) was born and raised in Pearl, MS. After receiving a BA in Theatre from Belhaven University, he continued his education at the University of Illinois. While completing his MFA in Sound Design, he worked as a Sound Engineer at the Krannert Center for the Performing Arts, assisting such acts as Dee Dee Bridgewater, The National, Keb' Mo', Mavis Staples, and more. Since moving to Columbus, he has worked as Adjunct Professor and Sound Designer for the Otterbein Theatre and Dance Department. Doc is excited to work with students on a more full-time basis with his position as Lighting and Sound Supervisor.

BIOGRAPHIES

Rebecca Schafer (Stage Manager) is a Senior BFA Design/Technology Major from Cincinnati, OH. Previous credits include *The Greeks: The Murders* (Stage Manager), *God of Carnage* (Stage Manager), *The Importance of Being Earnest* (Stage Manager), *Middletown* (Lighting Designer), and *Drag Show 2013 & Drag Show 2014* (Lighting Designer). Rebecca couldn't ask for a more wonderful cast and team for her final SM show at Otterbein. She'd like to thank Wookie and Linzie for originally shoving her into stage management, her mother and sister, WALDGRAVE, Terre Haute, and Gluten Free Bars for feeding her. Love as always to her cactus, Pokey. She'd like to dedicate her final SM show here to JeffaKevinI'mCoolGuy.

Kristen Cooperkline (Production Manager) earned her Bachelor of Arts in History/Theatre from The College of Wooster and her Master of Arts in American Culture Studies at Bowling Green University. She then received her MFA in Stage Management from the University of Illinois at Urbana-Champaign in 2012. Her Illinois credits include *Macbeth*, *La Calisto*, *Battle of Angels*, *February Dance*, and *Our Town*. Following her graduation, Kristen served as the Event Coordinator for the first-ever American College Dance Festival Association South Regional Conference as well as a stage manager for Bebe Miller Company. This is her second Summer Theatre season and she's thrilled to be a part of the Otterbein Theatre family.

Melinda Murphy (Movement/ Voice Coach) teaches Alexander Technique and Feldenkrais Method® in the Otterbein Theatre and Dance Department, with application to movement, voice, characterization, singing, and dance. Melinda is one of the few teachers trained in both methods; she combines them in her private practice in Columbus, and in classes and seminars for performing artists at other Ohio colleges. Since coming to Otterbein, she also trained to teach Fitzmaurice Voice work for its specialized tools for improving the voice and breath. Melinda has coached Otterbein productions since the turn of the century. She has also coached equestrians, figure skaters, musicians, and competitive barbershop quartets and choruses including the two-time international gold medalist Southern Gateway Chorus.

Patrick Stone (Technical Director) is new to Otterbein University having spent the last seven years at the University of Arkansas as the departmental Faculty Technical Director. He holds a Masters of Fine Arts from University of South Dakota in Vermillion and a Bachelors of Arts from Doane College in Crete, Nebraska. He teaches classes in stage craft, properties design and construction, metal working, technical directing, wood working and motion scenery. He also enjoys consulting with local and regional theatres ranging from professional to junior high. Lately he has been exploring the application of pneumatic actuators and cylinders in scenery and props.

Connor Allston (Axel) Is a junior BFA Musical Theater major from Shelby Township, MI. Previous credits include *Into the Woods* (Rapunzel's Prince), *Sweet Charity* (Charlie), *The Full Monty* (Jerry), and *Festival 2015* (Company Member). He would like to thank his parents, the staff, and his fellow classmates for this wonderful opportunity. #jeffakevinI'mcoolguy

Kellan Behrens (Thor Waldgrave) is no stranger to the Otterbein performing community. He played Gavroche in *Les Misérables* and Amahl in *Amahl and the Night Visitors*. He also played Winthrop in Eastland Performing Arts Center's production of *The Music Man*. Kellan will be entering the fourth grade at Scioto Ridge Elementary next year. He would like to thank his "Nerdy" family for taking such good care of him and being so much fun!

BIOGRAPHIES

Karen Crenshaw (Paint Assistant) is a junior BFA Design/Technology major from Newnan, GA. Previous credits include *Dance 2014: Tell Tale Poe* (Assistant Stage Manager), *Sweet Charity* (Paint Assistant), and Otterbein Summer Theatre 2014 (Company Member). I am so proud to be a part of such a stunning company! Congrats to all involved! For MHC.

Alli Dembicki (Props Master) is a sophomore BFA Design/Technology major from Pemberville, OH. Previous credits include *Into the Woods* (Props Assistant), 2015 Festival (Props Master), *The Greeks: The Murders* (Wardrobe Crew), and *Sweet Charity* (Spot Operator).

Lauren DiMario (Clelia Waldgrave) is a sophomore BFA Acting major from Dayton, OH. Lauren will next be on stage in the upcoming production of *Much Ado About Nothing* this fall. Last spring, she was a Company Member in Festival 2015. She would like to thank the hilarious cast and crew for making her laugh more than ever thought possible.

Tori DeProspero (Master Electrician) is a sophomore BFA Design/Technology major from Delaware, OH. Previous credits include *Into The Woods* (Spot Op) Festival 2015 (Lighting Designer), *Sweet Charity* (Costume Crew), and *Middletown* (Run Crew). Tori is thankful for this opportunity and the never ending support from her family, friends, and the faculty here at Otterbein.

Ben Folts (Rick Steadman) is a sophomore BFA Acting major from Hershey, PA. Previous credits include *The Greeks: The Murders* (Soldier), and *Rabbit Hole* (Sound Board Operator). It has been a wonderful and hilarious experience working with and spitting cheerios at the entire cast and crew of *The Nerd*. I feel loved and supported by all of them, as well as by all the members of my family that have helped me along the way and have come out to see this show.

Jeff Gise (Willum) is a senior BFA Acting major from San Antonio, TX. Previous credits include *The Greeks: The Murders* (Agamemnon), *Middletown* (Mechanic), and *The Full Monty* (Keno). He would like to thank his family and friends for all their love and support. He would also like to give a special shout out to JeffaKevin!mcoolguy for always putting a smile on his face.

Ian Hawthorne (Master Carpenter) is a sophomore BFA Design/Technology major from Mentor, OH. Previous credits include *The Greeks: The Murders* (Master Carpenter), and *Amadeus* (Lighting Designer). I want to thank all the professors and faculty that made my first year at Otterbein a fantastic one. After graduation, Ian plans to be pursue a career as a Technical Director at a university.

Lauren Kent (Assistant Director) is a junior BFA Musical Theatre major with a Dance Concentration from Cincinnati, OH. Previous credits include *Raised in Captivity* (Assistant Director), *Into the Woods* (Florinda), and *Sweet Charity* (Suzanne). Thank you to this amazing cast and crew. Special shout out to my parents and Melissa. Oh, wow! Enjoy the show!

Natalie Love (Tech Apprentice) is a sophomore BA Theatre major with minors in Arts Administration and Literary Studies from Reynoldsburg, OH. Previous credits include *Into the Woods* (Sound Assistant).

BIOGRAPHIES

Evan Moore-Coll (Warnock "Ticky" Waldgrave) is a junior BFA Acting major from North Garden, VA. Previous credits include *The Importance of Being Earnest* (Merriman), *Middletown* (Greg/Man/Janitor), and *The Greeks: The Murders* (Menelaus/Aegithus). This fall, I'm excited for the chance to be Dogberry in Otterbein's production of *Much Ado About Nothing*. I'd like to thank my family, the class of 2017, my teachers, The Three Musketeers, and the cast and crew of *The Nerd*.

Heidi Olander (Box Office Manager) is a senior Public Relations and Arts Administration major from Rocky River, OH.

Sarah Simon (House Manager) is a junior BA Theatre major with a Music Arts Administration minor from Algonquin, IL. Previous credits include *Into the Woods* (Paint Assistant), *The Greeks: The Murders* (Production Assistant), and *Middletown* (Assistant Stage Manager). Sarah wants to thank all her friends and family, especially her parents and Kappa sisters, for their constant support, positivity and love. She can't imagine getting through anything without them.

Sydney Smith (Box Office Assistant) is a senior BA Theatre major from Gahanna, OH. Previous credits include *Into the Woods* (Assistant Wardrobe Master), *Speed-The-Plow* (Assistant Wardrobe Master), *Les Misérables* (Ensemble), and *After The Fall* (Carrie).

Tara Smith (Assistant Stage Manager) is a junior BA Theatre major with Arts Administration and Music minors from Gahanna, OH. Previous credits include *Sweet Charity* (Assistant Stage Manager) and Festival 2015 (Production Manager). Tara is excited to stage manage *Much Ado About Nothing* this coming fall and *Fiddler on the Roof* this spring in addition to serving as Vice President of Cap and Dagger. Thanks to the ladies of TEM for keeping me sane, #summerofdreams.

Nikki Solomon (Wardrobe Master) is a junior BA Theatre and Art double major with a Concentration in Photography from Westerville, OH. Past credits include *God of Carnage* (Costume Designer), Festival 2015 (Wardrobe Master), and *Middletown* (Wardrobe Master). I plan to continue designing, or run away with the circus, whichever comes first. Also I would like to thank JeffaKevinimcoolguy for being the best fraternity a girl could ever be a part of; thanks for always being there for me.

Erin Ulman (Office Assistant) is a senior BFA Musical Theatre major from Centerville, OH. Previous credits include *Into the Woods* (The Witch), *Sweet Charity* (Elaine), *Dames at Sea* (Mona Kent), *The Full Monty* (Susan), *Les Misérables* (Featured Ensemble Member), and *After the Fall* (Ensemble). Erin will be seen in the fall in *Rent* as Maureen. Erin has loved getting to explore other aspects of the theatre this summer, and hopes you enjoy this great summer season! #JeffaKevinImcoolguy

Tess Webster (Charge Artist) is a junior BFA Design/Technology major from Columbus, OH. Previous credits include *Middletown* (Scenic Designer), *God of Carnage* (Scenic Designer), *The Greeks: The Murders* (Charge Artist), *Into the Woods* (Assistant Scenic Designer), and *The Full Monty* (Assistant Master Electrician). I plan to continue painting and designing, or pursue a career in indoor kite flying.

Afton Welch (Tansy) is a senior BFA Acting major from Dallas, TX. Afton was last seen as Iphigenia in the spring 2015 production of *The Greeks: The Murders*. Afton would like to thank Rizel, her mom, Melissa Lusher, and Carnegie Mellon University for teaching her a proper stage cry.



OTTERBEIN SUMMER THEATRE

Please join us for...



July 9-12, 16-19 & 23-25

ONSTAGE in the Fritsche Theatre at Cowan Hall

Tickets: 823-1109 or www.otterbein.edu/drama



OTTERBEIN
UNIVERSITY

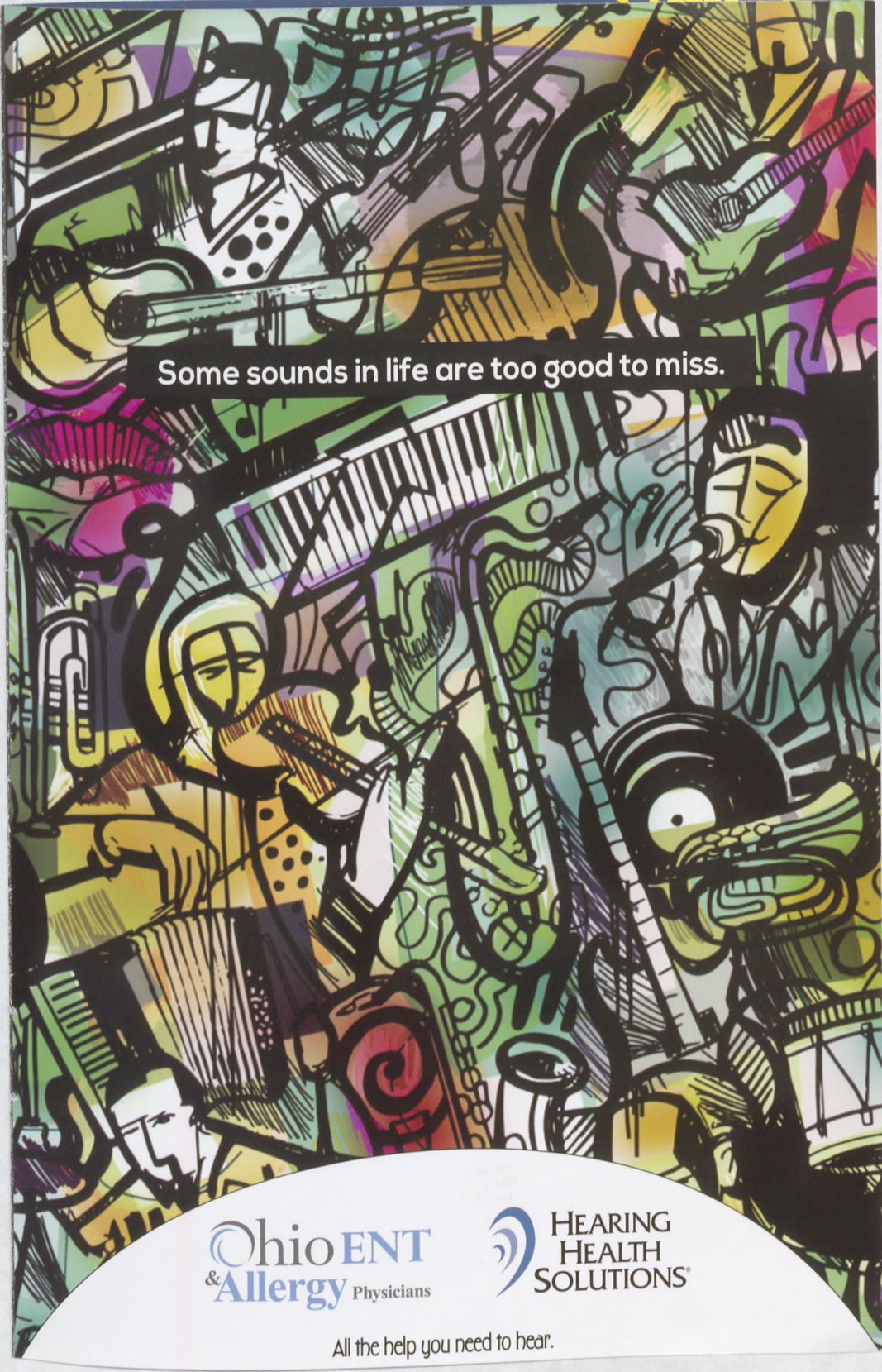
Follow

Otterbein University Theatre & Dance
on the web!

www.otterbein.edu/drama



Become a fan! Members-only benefits: behind-the-scenes production information, meet and greets with the cast, and more!

A vibrant, abstract collage of musical instruments and figures in a jazz style. The artwork features a variety of instruments including guitars, a piano, a saxophone, a trumpet, and a drum set, along with stylized human figures playing them. The background is a mix of bold colors like green, yellow, purple, and black, with intricate line work and patterns. The overall composition is dense and energetic, capturing the essence of a live jazz performance.

Some sounds in life are too good to miss.

OhioENT
&Allergy Physicians

HEARING
HEALTH
SOLUTIONS®

All the help you need to hear.

LATECOMER'S POLICY

The House Manager may seat latecomers only during times which minimize disruption of the performance. The management accepts no responsibility for inconvenience to latecomers and can make no adjustment because of it.

FIRE NOTICE

The exits are indicated by red lights. In the event of fire or any other emergency, please do not run - walk to the exit as directed by theatre management.

CAMERAS AND RECORDING DEVICES

The use of recording equipment and the taking of photographs during the performance are strictly prohibited.

RESTROOMS

Restrooms are located both on the ground level and in the basement of Cowan Hall. Additional restrooms are available across the street in Roush Hall.



**Assistive Listening Devices are available
at the Box Office upon request.**

2015 SUMMER THEATRE SPONSORED BY:

 **OAKLAND
NURSERIES**

1940 Celebrate 75 years of value 2015

www.oaklandnursery.com

**Ohio ENT
& Allergy Physicians**

PEDIATRIC AND ADULT

www.ohioentdocs.com



**HEARING
HEALTH
SOLUTIONS**
from Ohio ENT™

www.hearinghealthsolutions.com