

Otterbein University

## Digital Commons @ Otterbein

---

2017-2018 Season

Productions 2011-2020

---

2-15-2018

### Diary of Anne Frank

Otterbein University Department of Theatre and Dance

Follow this and additional works at: [https://digitalcommons.otterbein.edu/production\\_2017-2018](https://digitalcommons.otterbein.edu/production_2017-2018)



Part of the [Acting Commons](#), and the [Theatre History Commons](#)

---

#### Recommended Citation

Otterbein University Department of Theatre and Dance, "Diary of Anne Frank" (2018). *2017-2018 Season*.  
2.

[https://digitalcommons.otterbein.edu/production\\_2017-2018/2](https://digitalcommons.otterbein.edu/production_2017-2018/2)

This Book is brought to you for free and open access by the Productions 2011-2020 at Digital Commons @ Otterbein. It has been accepted for inclusion in 2017-2018 Season by an authorized administrator of Digital Commons @ Otterbein. For more information, please contact [digitalcommons07@otterbein.edu](mailto:digitalcommons07@otterbein.edu).



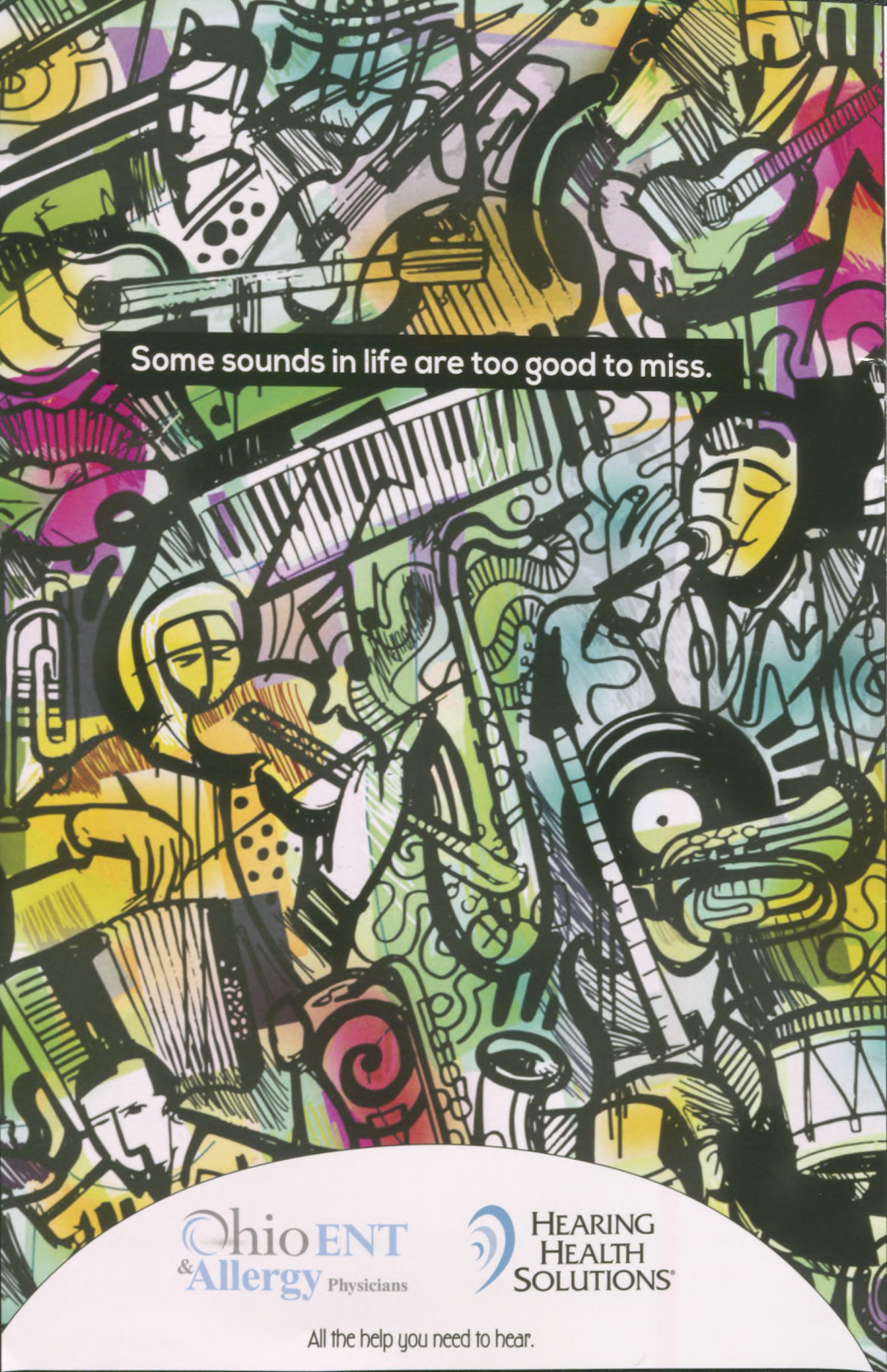
**OTTERBEIN**  
UNIVERSITY



**CREATING THE FUTURE**

**OTTERBEIN THEATRE & DANCE | 2017-18 SEASON**

---



Some sounds in life are too good to miss.

Ohio ENT  
& Allergy Physicians

HEARING  
HEALTH  
SOLUTIONS<sup>®</sup>

All the help you need to hear.

OTTERBEIN THEATRE & DANCE

PRESENTS

# THE DIARY OF

*Anne Frank*

A Play by Frances Goodrich & Albert Hackett

Based upon "Anne Frank: The Diary of A Young Girl"

Newly Adapted by Wendy Kesselman

*Adaptation originally produced on Broadway by David Stone,  
Amy Nederlander-Case, Jon B. Platt, Jujamcyn Theatre, and Hal Luftig  
in association with Harriet Newman Leve and James D. Stern.*

Directed by  
MARK MINEART

Scenic Design by  
STEPHANIE GERCKENS

Costume Design by  
JULIA FERRERI

Lighting Design by  
T.J. GERCKENS

Sound Design by  
DOC DAVIS

Stage Managed by  
ANNIKA MORRISON

February 15-18, 22-24, 2018  
Fritsche Theatre at Cowan Hall  
30 S. Grove St., Westerville

"The Diary of Anne Frank"  
is presented by special arrangement with Dramatists Play Service, Inc., New York

---

# CAST

---

Anne Frank .....	Tatum Beck
Otto Frank .....	Maxwell Bartel
Edith Frank .....	Kara Jobe
Margot Frank.....	Alissa Dellork
Miep Gies .....	Kat Lee
Peter van Daan.....	Kenneth Remaklus
Mr. Kraler/ Third Man.....	Desmond Fernandez
Mrs. van Daan.....	Isabel Billinghamurst
Mr. van Daan .....	Jacob Sundlie
Mr. Dussell .....	Daniel Kunkel*
First Man .....	Noah Boger
Second Man.....	Trevin Dutey
Voice Over: Hans Reuter.....	Mark Mineart
Voice Over: Gerrit Bolkestein.....	Kevin Buckley
Voice Over: Colin Reese Parker .....	Christopher Smith

\* denotes Fight Captain

---

# PRODUCTION NOTES

---

*The Diary of Anne Frank* will be performed in two acts with one 15-minute intermission.

The play takes place in the top floors of an annex in an office building in Amsterdam, Holland, during the years of World War II.

---

# SPECIAL THANKS

---

Available Light Theatre  
Jennifer Bell  
Dr. Paul Eisenstein  
Dr. Robert Kraft  
St. John Lutheran Church, Dublin  
The Ohio State University Department of Dance



On February 10, 2018, two Westerville police officers, Anthony Morelli and Eric Joering were shot and killed while responding to a 911 hang-up call. The entire company of *The Diary of Anne Frank* extends its sympathies to the family, friends, and community of these servants of the public good.

# PRODUCTION STAFF

Chair, Department of Theatre & Dance .....	Christina Kirk
Audience Services Director .....	Elizabeth Saltzgiver
Faculty Technical Director .....	Patrick Stone
Production Manager .....	Kristen Cooperkline
Costume Shop Supervisor .....	Julia Ferreri
Light & Sound Supervisor .....	Doc Davis
Speech and Dialects Coach .....	Melissa Lusher
Movement Coach/Voice Coach .....	Melinda Murphy
Administrative Assistant .....	Matt Wolfe
Manager of Ticketing and On-Campus Promotion .....	Alexx Conrad
Technical Director .....	Gunnar Schmidt
Projections Curator & Designer .....	Mark Mineart
Fight Choreographer .....	Mark Mineart
Assistant Director .....	Miranda Cotman
Assistant Stage Managers .....	Alyssa Samuelson, Sarah Short
Dramaturge .....	Mikayla Burr
Master Carpenter .....	Ben Eckert
Charge Artist .....	Jalissa Frye
Paint Assistant .....	Megan Gillespie
Properties Master .....	Anabelle Smith
Properties Assistant .....	Audrey Blessing
Projections Coordinator .....	Dave Wallingford
Projections Operator .....	Audrey Blessing
Wardrobe Master .....	Allison Mogle
Wardrobe Assistant .....	Thomas Martin
Master Electrician .....	Emily Maddox
Assistant Master Electrician .....	Ellie Iannucci
Light Board Operator .....	Zach Hubler
Sound Board Operator .....	Mary Nonno
House Manager .....	Lindsay Cluckey

## SCENIC STUDIO ASSISTANTS

Mikayla Burr	Zach Hubler
Ben Eckert	Braxton Maloney
Jalissa Frye	Gunnar Schmidt
Ellie Iannucci	Anabelle Smith
Nick Hahn	

## SCENERY/PROPS CREW

John Diver	Kailey Miller
Maddie Jackson	Erin Stumm

## COSTUME SHOP ASSISTANTS

Miranda Cotman	Allison Mogle
Val Frizzell	Hannah Pohlman
Megan Gillespie	Melissa Schlecht
Riley Mankin	Erin Strumm
Thomas Martin	Elise Wesley

## WARDROBE CREW

Katherine Clifford	Shelby McSwords
Marissa Davis	Anabelle Smith
Ellie Iannucci	Julia Sopher

## LIGHT & SOUND ASSISTANTS

Isabel Billinghamurst	Kailey Miller
Marissa Brown	Jessica Palagano
Emily Maddox	Jacob Sundlie

## ELECTRICS CREW

Emma Lou Andrews	Emily Maddox
Audrey Blessing	Mary Nonno
Zach Hubler*	Mathieu Wiesner
Evan Kret	
Emma Lampe*	*denotes run crew

## BOX OFFICE ASSISTANTS

Marissa Brown	Emily Maddox
Cailee Grzebeniek	Shawn Meeker
Adelaide Larbi	Marley Runk
Lindsay Lisanti	

## USHERS

Emma Lou Andrews	Emily Maddox
Grace Dillon	Elise Wesley
Val Frizzell	
Madeleine Norton	

---

# DIRECTOR'S NOTE

---

*"I know what I want, I have a goal, an opinion, I have a religion and love. Let me be myself and then I am satisfied. I know that I'm a woman, a woman with inward strength and plenty of courage."* - Anne Frank

The oldest human remains on earth ( between 2 and 6 million years) come entirely from Africa. Studies published in peer-reviewed scientific journals currently indicate that human beings are 92% - 99.9% genetically identical. This means that no matter who we are, where we are from, what we believe, how we love, or whether we like it or not, we are all connected to common ancestors. Quite literally, all people are our people.

Hate is not a political or partisan issue, it is a Humanist one.

*"How wonderful it is that nobody need wait a single moment before starting to improve the world."* - Anne Frank

**Let's stop waiting.**

Visit the Anne Frank Museum Amsterdam

<http://www.annefrank.org/en/>

Read Anne Frank's Diary:

[https://archive.org/stream/AnneFrankTheDiaryOfAYoungGirl\\_201606/Anne-Frank-The-Diary-Of-A-Young-Girl\\_djvu.txt](https://archive.org/stream/AnneFrankTheDiaryOfAYoungGirl_201606/Anne-Frank-The-Diary-Of-A-Young-Girl_djvu.txt)

Equality Ohio

<http://www.equalityohio.org>

Southern Poverty Law Center:

<https://metoomvmt.org>

Me Too Movement

<https://metoomvmt.org>

Thank you for coming to the Theatre  
- Mark Mineart

---

# BIOGRAPHIES

---

**Christina Kirk** (Producer) is Chair of the Department of Theatre and Dance at Otterbein University where she has taught since 1992. Her directing credits include The Living Theatre, New Dramatists, and assisting Liviu Ciulei at Arena Stage. Favorite directing projects at Otterbein include *The Caucasian Chalk Circle*, *King Richard III* and *Nine*. She has also directed and performed for Otterbein Summer Theatre. Favorite summer projects include *The 39 Steps*, *Barefoot in the Park*, and *The Understudy*. She has performed at the Illinois Shakespeare Festival, the Nebraska Repertory Theatre, the Illinois Repertory Theatre, CATCO, and in the Joseph Jefferson award winning Kabuki Medea. Favorite roles include "B" in *Three Tall Women* at CATCO, Violet in *August: Osage County* at Otterbein and, more recently, the title roles in *Cleopatra* and *Claudiel* at Columbus Dance Theatre. *Claudiel* received the Artistic Excellence Award by the Greater Columbus Arts Council and *Cleopatra* was nominated for this same award. Her one-woman show, which premiered at Columbus Dance Theatre, was featured in the March 2006 Theatre Journal. And, most recently she had the pleasure of reading her daughter Margaret Veach's poetry in an evening of her work at Columbus Dance Theatre. Kirk has an M.F.A. in Directing from Columbia University and a B.F.A. in acting from the University of Illinois. She is also a certified yoga instructor.

**Mark 'Coach' Mineart** (Director) Mark's professional theatre career spans over 25 years and three continents as an actor, director, and fight choreographer. He has appeared on and off Broadway with such stars as Denzel Washington and Kelsey Grammer as well as worked at many of the nation's most well respected and award-winning regional theatres. Classically trained, he has portrayed many of the great characters of Western theatre, among them Cyrano de Bergerac, Macbeth, Cassius in *Julius Caesar*, Touchstone in *As You Like It*, Caliban in *The Tempest*, Long John Silver in *Treasure Island*, and Lennie in *Of Mice & Men*. He has created roles in almost a dozen world premiere productions by such playwrights as Jane Martin and Eric Cobble, and even had roles written for him by multiple Tony and Drama Desk Award-winner Arthur Kopit. Mark has appeared in feature films, a variety of television programs and worked as a performance capture artist on blockbuster video games such as *Crysis II*, *Bullet Storm* and *NCIS: The Game*. He served as the head of the acting faculty at the American University in Cairo from 2011-2015 and was thrilled to join the Otterbein performance faculty beginning in the fall of 2015. Most recently, Mark performed as George opposite friend and colleague Melissa Lusher in *Who's Afraid of Virginia Woolf?* directed by Christina Kirk. He teaches Stage Combat, Acting Shakespeare, Acting Styles, Acting for TV/Film I & II, and The Business of 'the Business.' Mark can be found online at [www.MarkMineart.com](http://www.MarkMineart.com). A special thanks to Sarah and William, who make it not only possible, but worth it.

**Stephanie R. Gerckens** (Scenic Designer) is pleased to return to her alma mater to design the set for *Anne Frank*. Previous Otterbein set designs include *The Crucible*, *My Way*, *One Flew Over the Cuckoo's Nest*, *Violet* (Ohio Theatre Roundtable Award), *Longevity Abbreviated*, *Steel Magnolias*, and *Antigravity*. Among her design credits are *Alice in Wonderland* for BalletMet, *Evie's Waltz*, *Escanaba in Love*, *Drawer Boy* (Critic's Circle Award), *Boston Marriage*, and *Taste of Sunrise*, for CATCO. She has also designed for Capital University, The Phoenix Theatre for Children, Porthouse Theatre, Ohio Wesleyan University, Weathervane Playhouse, Miami Valley Dinner Theatre (La Comedia), Chicago's Remains Theatre, and Circa-21 in Rock Island, Illinois. She spent



---

# BIOGRAPHIES

---

two seasons at Actors Theatre of Louisville as Resident Assistant Scene Designer and Charge Scenic Artist. Stephanie has painted for theatre, television, and film with clients including Arena Stage, BalletMet, The Oprah Show, and the independent feature film *Lawn Dogs* (Lead Painter). Stephanie holds a BFA in Theatre Design and Technical Production and a BA in Fine Arts Painting from Otterbein, as well as an MFA in Theatrical Set Design from Boston University. In addition to her design work she is an adjunct faculty member at Otterbein and Capital universities.

**Julia Ferreri** (Costume Designer) has been building and designing costumes for over fifteen years. Favorite Otterbein designs include *Fiddler on the Roof*, *The Crucible*, *Les Misérables*, and *The Full Monty*. Around Columbus, she has designed for Actors Theatre: *Winter's Tale*, *Merry Wives of Windsor*, and *Beaux Stratagem*. Available Light: *She Kills Monsters* and *Cymbeline*. Columbus Opera: *Il Tabarro* and *Gianni Schicchi*. Julia has also worked at Glimmerglass Opera, The Shakespeare Theatre in Washington DC, The Pennsylvania Shakespeare Festival, Utah Shakespeare Festival, and Berkshire Theatre Festival. Julia received her MFA in Costume Technology from Ohio University-Athens. She sends her love to Zak John for all his love and support over the years.

**T.J. Gerckens** (Lighting Designer) is the lighting design faculty member at Otterbein University, a USA829 Union Lighting Designer, and proud Otterbein Alum. At Otterbein, he has designed the lighting for *Adding Machine: A Musical*, *Damn Yankees*, *Dance 2016: The Goddess*, *The Crucible*, *Fiddler on the Roof*, *Is He Dead?*, *Dance 2015: Famously Yours...Forever*, *Dance 2014: Tell-Tale Poe*, and *Into the Woods*. As a freelance lighting designer, T.J. has been part of the design team for the Tony Award winner and MacArthur Foundation "Genius" Mary Zimmerman for the last 23 years. Most recently he designed Mary Zimmerman's production of *Rusalka* at the Metropolitan Opera in NYC, and productions including *The Odyssey* at the Oregon Shakespeare Festival, *Wonderful Town* at the Goodman Theatre in Chicago, *Guys and Dolls* in L.A., her world-premiere adaptation of *Treasure Island*, at the Lookingglass Theatre and Berkeley Rep and Dan Ostling's production of *Blood Wedding* at the Lookingglass. His lighting designs have been seen at regional theatres across the United States, on and off Broadway, and at the Metropolitan Opera. Internationally, he has designed in England, Australia, and at the LaScala Opera House in Milan, Italy. He has received numerous awards for his designs including New York's Drama Desk Award and Lortel Awards for his lighting of *Metamorphoses* on and off Broadway, Jefferson Awards for *The Odyssey* and *Metamorphoses* in Chicago, and an award for "Exemplifying the Art of Collaboration" given to the Zimmerman design team by Entertainment Design Magazine. You can see his designs for *Lucia di Lammermoor* and *La Sonnambula* on DVDs released by the Metropolitan Opera. T.J. comes to Otterbein after two years at the University of Toledo, and prior to that he spent 17 years in production and executive management at CATCO. T.J. holds a BFA from Otterbein University and an MFA from Boston University. He is married to set designer, scenic artist, and Otterbein adjunct instructor Stephanie R. Gerckens. They have two children and live in Plain City.

---

# BIOGRAPHIES

---

**Doc Davis** (Sound Designer/Lighting and Sound Supervisor) was born and raised in Pearl, MS. After receiving a BA in Theatre from Belhaven University, he continued his education at the University of Illinois at Urbana-Champaign. While completing his MFA in Sound Design, he worked as a sound engineer at the Krannert Center for the Performing Arts, assisting such acts as Mark Morris Dance Company, The National, Derek Trucks Band, Keb' Mo', Ralph Lemon Dance Company, and more. After receiving his MFA, he acted as a Mastering Engineer, Sound Designer, A1, Location Recordist, Video Designer, and Re-Recording Mixer for various theaters, companies, and films. Since moving to Columbus, OH, Davis has worked at Otterbein University as Lighting and Sound Supervisor and Events Coordinator. He continues to design and mix shows many times a year and especially loves sharing his approach to Audio Engineering and Sound Design to students of all ages!

**Annika Morrison** (Stage Manager) is a sophomore BFA Design/Technology major with a Psychology minor from Ann Arbor, MI. Previously, she has worked on Dance Concert 2016: *The Goddess* (Assistant Stage Manager), *Adding Machine* (Assistant Stage Manager), and Dance Concert 2017: *Move Me* (Assistant Master Electrician). Annika would like to thank her friends Daniel, Marissa, Ben, and Braxton, and her amazing ASM's for providing support and snacks throughout this process.

**Kristen Cooperkline** (Production Manager) was raised in Columbus and earned her Bachelor of Arts in History/Theatre from the College of Wooster and her Master of Arts in American Culture Studies at Bowling Green State University. She then received her MFA in Stage Management from the University of Illinois at Urbana-Champaign. Her Illinois credits include *Macbeth*, *La Calisto*, *Battle of Angels*, *February Dance*, and *Our Town*. Following her graduation, Kristen served as the Event Coordinator for the first-ever American College Dance Festival Association South Regional Conference as well as a stage manager for Bebe Miller Company. She recently returned to the University of Illinois at Urbana-Champaign as the production stage manager for February Dance 2016, featuring the original work "Baldwin/NOW," choreographed by Ping Chong.

**Melissa Lusher** (Speech and Dialects Coach) is a tenured Associate Professor in the Department of Theatre and Dance where she teaches acting, speech, and dialects. She is also the Director of the Acting Program and the Resident Speech and Dialects Coach for all productions. She regularly serves as a guest dialect coach at area universities and theatre companies, including Denison University, Actors' Theatre of Columbus, and Short North Stage. Melissa holds an M.F.A. in Acting from the combined program of Carnegie Mellon University and the Moscow Art Theatre in Russia, and a B.F.A. in Acting from Carnegie Mellon. She was a founding company member of the American Studio Theatre in New York City. Favorite acting credits include Martha in *Who's Afraid of Virginia Woolf?* (Otterbein Theatre), Barbara in *August: Osage County* (Otterbein Theatre), Goneril in *King Lear* (Actors' Theatre), Clytemnestra in *The Greeks* (Moscow Art Theatre), Marina in *Volodya* (LaMaMa E.T.C.), and Margaret in *Richard III* (AST). Favorite directing credits at Otterbein include *Rumors*, *The Crucible*, *RENT*, *The Greeks: The Murders*, and *Spring Awakening* (named one of the Best 10 Shows of 2012 by the Columbus Dispatch). Melissa is a member of the Voice and Speech Trainers Association (VASTA).

---

# BIOGRAPHIES

---

**Melinda Murphy** (Movement/Voice Coach) teaches Alexander Technique and Feldenkrais Method® in the Otterbein Theatre and Dance Department, with application to movement, voice, characterization, singing, and dance. Melinda is one of the few teachers trained in both methods; she combines them in her private practice in Columbus, and in classes and seminars for performing artists at other Ohio colleges. Since coming to Otterbein, she also trained to teach Fitzmaurice Voice work for its specialized tools for improving the voice and breath. Melinda has coached Otterbein productions since the turn of the century. She has also coached equestrians, figure skaters, musicians, and competitive barbershop quartets and choruses including the two-time international gold medalist Southern Gateway Chorus.

**Gunnar Schmidt** (Technical Director) is a senior BFA Design/Technology major from South Bend, IN. Previously, he has worked on *Top Girls* (Technical Director), *The Addams Family* (Assistant Technical Director), and *Is He Dead?* (Master Carpenter). I just want to thank my friends and family for all the support they've given me. Also, a huge thank you to Patrick Stone for being an amazing mentor.

**Patrick Stone** (Assistant Professor/Faculty Technical Director) began his tenure as the Technical Director at Otterbein in the Fall of 2014. He spent the previous seven years at the University of Arkansas as the Faculty Technical Director. He holds a Masters of Fine Arts from the University of South Dakota in Vermillion and a Bachelors of Arts from Doane College in Crete, Nebraska. He teaches classes in stage-craft, properties design and construction, metal working, technical direction, wood working, and motion scenery. Patrick also enjoys consulting with local and regional theatres ranging from professional through junior high school. When not in the Scenic Studio or backstage Patrick enjoys any activity that gets him outdoors. Lately, he has been exploring the use of blacksmithing in props construction. Patrick fears neither robots nor clowns, but please do not ask him about mimes.

**Dave Wallingford** (Projections Coordinator) has worked as a sound designer, audio engineer, projections designer, and production manager. He is a founding company member and former production manager at Available Light Theatre. Around Columbus, he has worked with CATCO, CAPA, Human Race Theatre, Madlab, BalletMet, Columbus Symphony Orchestra, Columbus Opera, Wexner Center for the Arts, Bebe Miller Dance Company, OSU Dept of Dance, OSU School of Music, OSU Sports, Columbus Bluejackets, Columbus Crew, Fox Sports Ohio, Big Ten Network, and countless others. When not working in the entertainment industry, he races rally cars, and won the 2WD Canadian National Championship and the North American Rally Cup in 2017.

**Maxwell Bartel** (Otto Frank) is a junior BFA Acting major from Cincinnati, OH. Previous show credits include *Rumors* (Glenn Cooper), *They're Playing Our Song* (Vernon Gersch), and *My Fair Lady* (Alfred Doolittle). Thank you for coming and enjoy the show!

**Tatum Beck** (Anne Frank) is a sophomore BFA Musical Theatre major from Worthington, OH. Previously she has worked on Dance 2017: *Move Me* (Isabel), and *Damn Yankees* (Lola Swing/Ensemble). I'd like to thank my parents and, especially, my sister, for their constant support. Much love to the Class of 2020, always.

---

# BIOGRAPHIES

---

**Isabel Billinghamurst** (Mrs. van Daan) is a sophomore BFA Musical Theatre major from Lagrange, OH. Previously, she was seen in *Top Girls* (Gret/Louise), Otterbein Summer Theatre's production of *They're Playing Our Song* (Sonia's Voice), and *My Fair Lady* (Ensemble). Special thanks to Anne Frank, a personal hero, and for the opportunity to bring a part of this essential story to life, especially in such a time as this. Much love.

**Audrey Blessing** (Props Assistant) is a freshman BA Theatre major from Westerville, OH. Audrey has worked on *Rumors*, and *Festival 2018: It's Up to Art!* I would like to thank my family for the endless love and support, and my friends for always being there to help. Love you all!

**Noah Boger** (First Man) is a freshman BFA Musical Theatre with a concentration in Dance from San Francisco, CA. He was last seen in *Dance 2017: Move Me*. Other credits include Hillbarn Theatre Company's *A Few Good Men* (Pfc. Loudon Downey). Noah is honored and thrilled to be in his first main stage play here at Otterbein.

**Mikayla Burr** (Dramaturg) is a junior BA Theatre and History double major from Dayton, OH. Previously, Mikayla was the Props Master for the Otterbein Summer Theatre productions of *My Fair Lady* and *They're Playing Our Song*, and Scenic Designer for the fall classroom project production of *Who's Afraid of Virginia Woolf?*

**Lindsay Cluckey** (House Manager) is a junior BFA Design/Technology with an Arts Administration minor from Toledo, OH. Previously, she has worked on *Adding Machine* (Assistant Director), and *Top Girls* (Assistant Stage Manager). Lindsay would like to thank her mom and dad, Matt, and Kendra for endlessly supporting her in all that she does.

**Miranda Cotman** (Assistant Director) is a junior BA Theatre major with a Studio Art minor from Westerville, OH. Miranda previously worked *Dance 2017: Move Me* (Assistant Costume Designer), and is currently working on Worthingway Middle School's production of *Peter Pan Jr.* (Costume Designer). Miranda would like to thank her mom for all her support.

**Alissa Dellork** (Margot Frank) is a junior BFA Acting major from Aldie, VA. Previous Otterbein Credits include *The Crucible* (Sarah Good) and *Rumors* (Officer Pudney). Alissa is honored and humbled to take part in telling such an important story. Many thanks to Mom, Dad, and Erin for their endless love and support. She dedicates this show to her loving Grandmother who inspires her every day.

**Trevin Dutey** (Second Man) is a freshman BFA Musical Theatre major from Ironton, OH. Trevin is very excited for his first Otterbein production! He would like to thank his family and Kathy Price for all their love and support, and he would like to thank Coach for giving him this great opportunity.

**Ben Eckert** (Master Carpenter) is a sophomore BFA Design/Technology major from Hillard, OH. Previously, he has worked on *Dance 2017: Move Me* (Technical Director) and *Rumors* (Assistant Technical Director). Ben is excited to have had the opportunity to work on this production.

---

# BIOGRAPHIES

---

**Desmond Fernandez** (Mr. Kraler/Third Man) is a freshman BFA Acting major from Columbus, OH. Previous credits include *Roanoke* (Sir Walter Raleigh), *The Little Mermaid* (Sebastian), and *Once on this Island* (Papa Ge). I would like to thank my family and friends for all their love and support while I pursue my dreams. I strive to make them all proud each time I enter the stage.

**Jalissa Frye** (Charge Artist) is a sophomore BFA Design/Technology major with a Studio Art minor. She has previously worked on *Dance 2017: Move Me* (Scenic Designer) and *Adding Machine* (Master Carpenter).

**Megan Gillespie** (Paints Assistant) is a sophomore BFA Design/Technology major from Houston, TX. Otterbein show credits include *Damn Yankees* (Production Assistant) and *Adding Machine* (Props Assistant).

**Ellie Iannucci** (Assistant Master Electrician) is a freshman BFA Design/Technology major from Dublin, OH. Previously, she has worked on *Rumors* (Scenery Run Crew). Thank you to my parents and brother who supported me through everything. I'm so grateful for all the amazing people that are now in my life; I love you all.

**Kara Jobe** (Edith Frank) is a junior BFA Acting major from Dayton, OH. Previous credits include *Top Girls* (Isabella Bird/Nell/Joyce), *The Crucible* (Betty), and *Brighton Beach Memoirs* (Nora). It is a humbling experience to be able to help tell the story of an astonishing, articulate young woman. It is a beautiful reminder of the patience we must have for one another, every day.

**Daniel Kunkel** (Mr. Dussel/Fight Captain) is a sophomore BFA Acting major from Richmond, VA. He was last seen in Otterbein's Classroom Project, *Who's Afraid of Virginia Woolf?* (Nick), *My Fair Lady* (Col. Pickering), and *They're Playing Our Song* (Skepticism). He'd like to thank Annika, Lenny, Melissa, Ben, Alyssa, Christopher, his entire family, and Mom and Dad!

**Kat Lee** (Miep Gies) is a junior BFA Musical Theatre major from Gahanna, OH. Previous credits include *The Crucible* (Tituba) here at Otterbein. Professional credits include *Dream Girls* (Lorrell) at Short North Stage, and *Mamma Mia!* (Sophie) at Weathervane Playhouse. This remarkable woman is the reason we have this incredible story today. She has taught me so much about the strength of selflessness. Thank you, Miep. "I was not worried about me" - Miep Gies.

**Emily Maddox** (Master Electrician) is a freshman BFA Design/Technology major with an Arts Administration minor from Dallas, TX. This season, she has worked on *Who's Afraid of Virginia Woolf?* (Lighting Designer). She would like to thank her family, friends, and professors for always supporting her and pushing her to be her best.

**Braxton Maloney** (Assistant Sound Design) is a sophomore BFA Design/Technology major from Hilliard, OH. Previously, he has worked on *Adding Machine* (Master Carpenter), and *Rumors* (Carpenter). Thanks to all my friends and family for constant love and support, and for showing me I am capable of great things.

---

# BIOGRAPHIES

---

**Thomas Martin** (Carpenter/Wardrobe Assistant) is a freshman BFA Design/Technology major from Worthington, OH. Previously, he has worked on *Adding Machine* (Wardrobe Master) here at Otterbein. Professional Credits include *Meet Me in St. Louis* (Assistant Costume Designer) at Weathervane Playhouse. Stay in school, kids!

**Allison Mogle** (Wardrobe Master) is a junior BA Theatre major from Liberty Township, OH. Previous show credits include *Rumors* (Wardrobe Master/Assistant Costume Designer), *Dance 2017: Move Me* (Draper), *Adding Machine* (Draper), *The Crucible* (Wardrobe Assistant), and *The Addams Family* (Wardrobe Assistant). Thank you to my family for always supporting me!

**Kenneth Remaklus** (Peter van Daan) is a sophomore BFA Musical Theatre major from Cincinnati, OH. Previous credits include *Adding Machine* (Shrdlu), and Otterbein Summer Theatre's production of *My Fair Lady* (Freddy). Recent professional credits include Weathervane Playhouse's production of *Meet Me in St. Louis* (Lon Smith). It has been truly fulfilling to work on a piece which presents a message that is incredibly important and relevant to the divided world that we live in today. Many thanks to Coach, Miranda, the cast and crew, and my family!

**Alyssa Samuelson** (Assistant Stage Manager) is a sophomore BA Theatre major with a Dance and Arts Administration double minor. Previously, she has worked on *Adding Machine* (House Manager), *Rumors* (Assistant Stage Manager), and Otterbein Summer Theatre's *My Fair Lady* (Assistant Stage Manager). Alyssa would like to thank Elizabeth, Maggie, Jessica, Daniel, Annika, Ben, Christopher, Sarah, and her family!

**Sarah Short** (Assistant Stage Manager) is a sophomore BA Theatre and Business Administration double major from Marion, OH. Previously, she has worked on *Drag Show 2017: Drag Me to The Moon* (Company Manager), *Dance 2017: Move Me* (Assistant Stage Manager), and *Damn Yankees* (Production Assistant).

**Anabelle Smith** (Props Master) is a freshman BFA Design/Technology major from Powell, OH. Previous credits include *Who's Afraid of Virginia Woolf?* (Charge Artist/Props Assistant), and *Festival 2018: It's Up to Art!* (Design/Technology Representative). A special thanks to Stone, Miranda, Braxton and Alyssa for helping me get through this show in one piece.

**Jacob Sundlie** (Mr. van Daan) is a junior BFA Acting major from Marblehead, MA. Professional Credits include *The Addams Family* (Gomez), and *Mary Poppins* (Mr. Banks). Otterbein Credits include *Damn Yankees* (Coach Van Buren), *The Addams Family* (Lurch), and *Dance 2015: Famously Yours* (Elvis Presley). He is also directing a Workshop production this semester of *2.5 Minute Ride*, a play that deals with the lasting effects of the Holocaust on a modern family.

---

# HONORARY CAST LIST

---

Otterbein University Department of Theatre & Dance honors those who have given so generously during the 2017-18 Academic Year. Members who give annually at the Director and Producer level are included in the Joanne Van Sant Society.

*Thank you for contributing to the education of our students!*

---

## Producer (\$5,000+)

---

Victor G. Boft  
Alan & Christy Coupland  
Hearing Health Solutions  
Nevalyn Fritsche Nevil  
Ohio ENT & Allergy Physicians

---

## Director (\$1,000-\$4,999)

Bernerd E. Campbell  
Kathy A. Krendl & Richard S. Gilbrt  
Al & Louise Minor  
Ruth E. Pifer

## Designer (\$500-\$999)

Thomas M. Bay & Martha Dean Kerr  
Brian Day  
William L. & Sonya Stauffer Evans  
Mark N. Peters  
Barbara M. Ruppel  
Timothy Veach & Christina M. Kirk

---

## Diva (\$250-\$499)

---

Lawrence & Connie Ackert  
Kay Atkinson Ball  
Edmund L. & Diane Daily Cox  
Petie Dodrill  
David C. & Nancy Smith Evans  
Sandra Freer  
John & Terry Geary  
Mark Havanec  
John T. & Eileen Fagan Huston

Douglas R. & Mary Pat Knight  
Janet Moore-Coll  
Richard & Angie Peters  
Barbara Powell  
Paul S. & Sheila Reiner  
Douglas R. Smeltz  
Jon & Joyce Stonebraker  
Sarah Whybren  
Norma F. Worley

---

## Star (\$100-\$249)

---

Charles & Rebecca Ansley  
Anonymous  
Fred & Patricia Baum  
Richard O. & Linda Spicer  
Beckner  
Jane Albright Blank  
Troy A. & Kathleen Bonte  
Clay Cormany & Rebecca  
Coleman Princehorn  
Mike & Debra Collins  
Roy & Joy Croy  
John L. & Sharon Davis  
Margaret Morgan Doone  
Margaret English Duffy  
Jeffrey & Gretchen Glasgow  
Mark S. Granger  
Kenneth, Debra & Emily  
Hawking  
Vince & Gayle Herried

Vinny Herwig  
Jane Horn  
Jacque Hoyt  
Herbert & Jeanne Johnston  
Thomas & Barbara Knight  
David Coffman  
Otto & Janet Laster  
Chuck & Connie Layne  
Bernard Losekamp  
William Lyons  
Pearson McWane  
William & Harriet Merriman  
Jack & Peggy Moreland  
Dennis & Marjorie Munger  
Nationwide Foundation  
Alan E. & Carol S. Norris  
Dennis & Sue Ann Norton  
John W. & Denise Alford Orr  
William Ostrander & Jil Schultz

Brad Ostroff  
Jim & Martha Owens  
The Parrish Family  
Eric & Elaine Peters  
Christopher & Tamara Remington  
Jeff & Veronica Reutter  
Marvin & Juanita Rusk  
Elizabeth A. Salt  
Louise Stouffer Schultz  
Alan & Linda Smith  
David & Beckey Stamm  
John & Sally Stefano  
J. Mikal & Janice Townsley  
John & Carol Volpi  
Kenneth R. Wadkins  
Richard E. White  
Sara Willson  
Laura Cean Wilson  
Craig & Carol Young

---

# HONORARY CAST LIST

---

## Supporting Actor (\$50-\$99)

---

Erik & Tina Aisel	Barbara George	James E. Paxton
John & Diane Anderson	Sean & Julie Gillia	Phyllis & Martin Potts
Kay Ball	Charles & Charlene Hammond	Charles & Marion Rees
Bill & Judyth Barr	Elliot B. & Ruth Hodgdon	Ronald & Joyce St. Pierre
Dan & Linda Bevan	Douglas & Joan Hoover	Richard K. & Tirtzah Sandor
James V. Blazek	J. Thomas & Kathleen Jones	David & Laura Sewalk
Linda Blicke	Walter & Connie Kobalka	Albert & Louise Siegel
Carl & Carol Boehm	Joseph & Elizabeth Kolmer	Rex & Jane Sprague
Len & Sharon Bussard	David & Barbara Lambert	Carol Spathelf
Sharon Buxton	Bill LaTaille	Bill Stoddard
Brian Carlisle	Richard & Catherine Loveland	Richard & Jeanette Robinson
Wallace & Barbara Cash	Frank & Karen Martens	Thomas
Ted Chaney	Gary A. & Barbara J. McKenzie	Madelon Timmons &
Leonard & Roberta Clark	Joan McKinney	Bill Miller
Mike & Debra Collins	Ted & Sally Messner	Michele Wilson Toney
Kelly Davie	Carl D. & Helen W. Miller	Roger & Margaret Lloyd Trent
Barbara Daye	Jerry & Judi Miller	Michael Vehonsky
Richard & Diane Demlow	Michael & Nancy A. Miller	David B. & Joyce Shannon
L. Thomas & Mary Alice	Tommie Miller	Warner
Dillman	OCLC Online Computer	Jay & Barbara Wilcox
Jim & Di Erickson	Library Center, Inc.	David & Ann Ziegel

---

## Extra (\$10-\$49)

---

Anonymous	Mark A. Geary	Patricia Casey Mynster
Elizabeth J. Arnold	Edwin A. Geer	Donald & Jane Schriver
Benjamin H. Bennett	John & Alice Heller	Luanne Shelby
Elizabeth A. Burrier	Larry & Misty Hibbitts	Paul & Alyce Sheridan
Kenneth Carter	Kimberly Fippin Hoessly	Frank Shyika
John & Judith Cashman	Ron & Mary Hooker	Ronald G. & Linda Simpson
Larry & Margaret Cepek	Richard & Christine Jones-Leavy	James Tarpoff
Bradford & Michelle Chaklos	Margaret Lares Kadunc	James E. & Carol Carpenter
Judy & Mike Christian	Gregory Koltun	Waugh
Richard & Marie Dilley	Barbara Limbert	Thomas & Susan White
Barbara Donohue	Don Lund	Grace Barnes Wiley
Alyce Douce Elbert	Barbara Glor Martin	Donald & Jane Wilson
Mary Forster	Tom & Mary Ellen Miller	Roger L. Wilson
Lawrence Friedman	William K. Miller	John A. & Mary Lou Wolfe
Alzada Gallagher	Jack & Kathy Monts de Oca	



## Ron Lykins CPA's

If you are looking for a blend of personal service and expertise, you have come to the right place! We offer a broad range of services for individuals, business owners, executives and independent professionals. Our rates are competitive with other premier CPA firms. We are experienced and we're friendly. We can help with decedents final tax filings.  
**Call now for a free consultation.**

Our firm is one of the top 20, as reported by Business First in central Ohio. We provide services to our clients in 38 states. We provide outstanding service to our clients because of our dedication to the three underlying principles of **professionalism, responsiveness and quality.**

"Ron and his staff are the best!"

"I like everything you do. Very personal attention and great communication every step of the way."

45 W. Main St. Westerville, OH 43081  
Email: lykins@ronlykinscpas.com

Call: (614) 891-1041

[www.ronlykinscpas.com](http://www.ronlykinscpas.com)

### Individual Services

Personal Financial Planning  
Estate Planning

### Tax Services

Tax Preparation  
Tax Planning  
Tax Problems  
Decedent Tax Return Preparation

### Business Services

Small Business Accounting  
Payroll

### QuickBooks Services



## Create Your Future OTTERBEIN

- Nationally Recognized Professional Training Program
- Internship Placement with Industry Leaders
- Networking and Professional Connections
- Individual Attention in Small Classes

BFA: Design/Technology • Musical Theatre • Acting BA: Theatre

Photo Jordan Donica '16 (*Hamilton* National Tour/  
*Phantom of the Opera* Broadway)

For more information:

- [Otterbein.edu/Theatre](http://Otterbein.edu/Theatre)
- 614.823.1657
- [mtwolfe@otterbein.edu](mailto:mtwolfe@otterbein.edu)



**OTTERBEIN**  
UNIVERSITY  
DEPARTMENT OF  
THEATRE & DANCE



OTTERBEIN  
UNIVERSITY

DEPARTMENTS OF THEATRE & DANCE AND MUSIC PRESENT

# THOROUGHLY MODERN *millie*

Book by  
RICHARD MORRIS &  
DICK SCANLAN

New Music by  
JEANINE TESORI

New Lyrics by  
DICK SCANLAN

April 5-8 & 12-14  
Fritsche Theatre at Cowan Hall

Call or Click for Tickets  
614.823.1109 [otterbein.edu/drama](http://otterbein.edu/drama)



WESTERVILLE **35**  
SYMPHONY YEARS  
AT OTTERBEIN UNIVERSITY

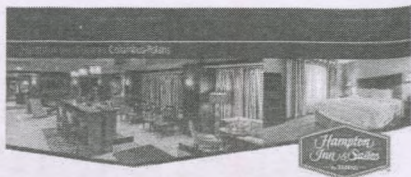
Hear violin soloist  
Lindsay Deutsch perform  
*A Beatles Fantasy.*

March 4, 2018 | 5 pm

FRITSCH THEATER AT COWAN HALL | OTTERBEIN UNIVERSITY

(614) 899-9000

[WWW.WESTERVILLESYMPHONY.ORG](http://WWW.WESTERVILLESYMPHONY.ORG)



You have a **friend** in Columbus, Ohio!

Clean and Fresh Hampton Bed.™

Free hot breakfast.

TV features.

Room amenities.

Recreational enjoyment.

Meeting facilities.



8411 Pulsar Place  
Columbus, OH 43240  
Ph: 614.885.8400 • Fax: 614.885.8410  
1.800.HAMPTON®  
[www.hamptoninnpolaris.com](http://www.hamptoninnpolaris.com)

Find us on social media for daily updates about our students, faculty, and alumni - there's always something new to share!



Otterbein University Theatre and Dance

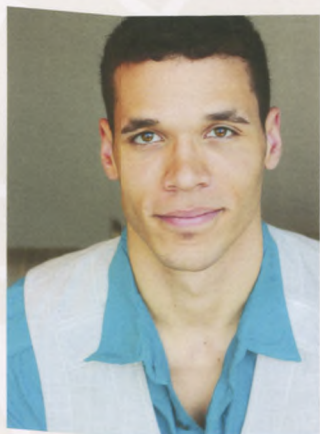
August 30 at 6:45pm

Meet Thom Christopher Warren, our newest member of the #Otterbein Theatre and Dance faculty! Thom comes to us straight from his 15 year run with "The Lion King" on Broadway! This year, Thom is teaching our Senior Showcase and Internship class, Junior MT Studio, American Musical Theatre History, and will be directing "Thoroughly Modern Mille" in the Spring. Welcome to the family, Thom!



# STANDING IN THE SPOTLIGHT

Your generosity has helped so many talented students achieve their dreams.



Tony winners.  
Emmy winners.  
Broadway.  
Silver screen.  
Countless awards.  
Enumerable standing ovations.

Now we ask you to **STAND** with us to prepare the next generation of theatre artists.

*"I feel so much more ready than I ever anticipated I would. Otterbein got me in the right mindset to hit the ground running."*

— Jordan Donica '16

Made Broadway debut as "Raoul" in *Phantom of the Opera* within one month of graduating.

*The Performing Arts Fund supports...*

## Scholarships

Ensure the most promising talent across the country can benefit from an Otterbein education.

## Technical and Facility Support

Critical upgrades that include new rigging, stage floor and communication systems ensure the caliber of Otterbein productions.

## New Works

Help introduce new works to central Ohio by bringing guest artists, residencies and production support to our nationally acclaimed program.



WHERE WE  
**STAND** MATTERS

The Campaign for Otterbein's Future:  
Investing in Students First

Learn more about the Performing Arts Fund at [www.otterbein.edu/STAND](http://www.otterbein.edu/STAND)

## LATECOMER'S POLICY

The House Manager may seat latecomers only during times which minimize disruption of the performance. The management accepts no responsibility for inconvenience to latecomers and can make no adjustment because of it.

## FIRE NOTICE

The exits are indicated by red lights. In the event of fire or any other emergency, please do not run — walk to the exit as directed by theatre management.

## CAMERAS AND RECORDING DEVICES

The use of recording equipment and the taking of photographs during the performance are strictly prohibited.

## RESTROOMS

Cowan Hall: Restrooms are available on the first floor of Cowan Hall and in the basement. A handicapped accessible platform lift is located at the north stairwell in Cowan Hall. Please see a front of house attendant for assistance with the lift. Additional restrooms are located across the street in Roush Hall on the north side of each floor.

Campus Center: Restrooms are located on the ground level of the Campus Center. An elevator is available for transportation between floors.



ASSISTIVE LISTENING DEVICES ARE AVAILABLE  
AT THE BOX OFFICE UPON REQUEST.