

Otterbein University

## Digital Commons @ Otterbein

---

2000-2001 Season

Productions 1991-2000

---

5-17-2001

### Oklahoma!

Otterbein University Theatre and Dance Department

Follow this and additional works at: [https://digitalcommons.otterbein.edu/production\\_2000-2001](https://digitalcommons.otterbein.edu/production_2000-2001)



Part of the [Acting Commons](#), [Dance Commons](#), and the [Theatre History Commons](#)

---

#### Recommended Citation

Otterbein University Theatre and Dance Department, "Oklahoma!" (2001). *2000-2001 Season*. 2.  
[https://digitalcommons.otterbein.edu/production\\_2000-2001/2](https://digitalcommons.otterbein.edu/production_2000-2001/2)

This Book is brought to you for free and open access by the Productions 1991-2000 at Digital Commons @ Otterbein. It has been accepted for inclusion in 2000-2001 Season by an authorized administrator of Digital Commons @ Otterbein. For more information, please contact [digitalcommons07@otterbein.edu](mailto:digitalcommons07@otterbein.edu).

Rodgers and Hammerstein's

# Oklahoma!

Book & Lyrics by  
Oscar Hammerstein II  
Music by Richard Rodgers

Based on the play  
"Green Grow the Lilacs" by Lynn Riggs

Original Dances  
by Agnes de Mille

Presented by the Otterbein College  
Department of Theatre and Dance  
Co-sponsored by the Otterbein College  
Department of Music

May 17-26  
Cowan Hall

Directed by **John Stefano**  
Musical Direction by **Susan Larson**  
Choreography by **Stella Hiatt-Kane**  
Scenic Design by **Dick Block**

Costume Design by **Marcia Hain**  
Lighting Design by **Dana White**  
Fight Choreography by **Robert Behrens**  
Vocal Direction by **Beth Burrier-Bradstreet**

OKLAHOMA! is presented through special arrangement with The Rodgers & Hammerstein Theatre Library, 229 West 28th Street, 11th Floor, New York, NY 10001.



# Scene Synopsis

## Act I

- Scene 1: Laurey's Farmhouse
- Scene 2: The Smoke House
- Scene 3: A Grove on Laurey's Farm

## Act II

- Scene 1: The Skidmore Ranch
- Scene 2: Skidmore's Kitchen Porch
- Scene 3: Laurey's Farmhouse

Time: Just after the turn of the century  
Place: Indian Territory (Now Oklahoma)

# Musical Numbers

## Act I

- Overture
- "Oh, What A Beautiful Mornin'" ..... Curly
- Laurey's Entrance ..... Laurey
- "The Surrey With the Fringe on Top" ..... Curly, Laurey, Aunt Eller
- "Kansas City" ..... Will, Aunt Eller, and the Boys
- "The Surrey With the Fringe on Top" Reprise ..... Curly
- "I Cain't Say No!" ..... Ado Annie
- Entrance of Ensemble ..... Will, Ado Annie, Ensemble
- "Many A New Day" ..... Laurey and the Girls
- "Many A New Day" Dance ..... Laurey and the Girls
- "People Will Say We're In Love" ..... Curly and Laurey
- "Pore Jud is Daid" ..... Curly and Jud
- "Lonely Room" ..... Jud
- Dream Sequence ..... Laurey, Girls, Dream Figures
- (a) Melos
- (b) Out of My Dreams
- (c) Interlude To Ballet
- (d) Dream Ballet
- Entr'Acte

## Act II

- "The Farmer and The Cowman" ..... Carnes, Aunt Eller, Curly, Will, Ado Annie,  
..... Slim, and Ensemble
- Farmer Dance
- "All Er' Nothin'" ..... Ado Annie, and Will
- "Oklahoma" ..... Curly, Laurey, Aunt Eller, Ike, Fred, and Ensemble
- Finale Ultimo ..... Entire Company

# Cast

- AUNT ELLER ..... Lindsay Chambers
- LAUREY ..... Elizabeth Harold
- CURLY ..... Brandon Strawder
- JUD FRY ..... Michael Ruehrmund
- ADO ANNIE CARNES ..... Jamie Lynn Sutton
- WILL PARKER ..... Derek Gatts
- ALI HAKIM ..... Paolo Reginaldo
- GERTIE ..... Jessica Richter
- ANDREW CARNES ..... James Stover
- IKE SKIDMORE ..... Matt DeVriendt
- CORDELAM ..... Ben Davey
- DREAM BALLET LAUREY ..... Mandy Wheeler
- DREAM BALLET CURLY ..... Tony Gonzalez
- SINGING CHORUS ..... John-Philip Bowen, Clint Carter, Michael Cassara,  
Erin Diamantides, Audrey Hueckel, Kate Sanders, Maya Sayre
- DANCING CHORUS ..... Ray Auxais, Ali Bell, Wes Coulter, Justin Leath, Julia Moss  
Laura Runkle, Faith Talley, Chris Van Hoy, Renata Wilson



# Orchestra

---

VIOLIN .....	Margarette Barkhymer, Sara Laderman, Karmyn McCrary, Lori Neff, Bob Pforsich, Irina Shevtchenko
VIOLA .....	Jim Konzen, Mary Alice Susi, Erica Volpe
CELLO .....	Rose Docy, Vanessa Perry
BASS .....	Moses Carreker
FLUTE .....	Brianna Burkett
OBOE/ENGLISH HORN .....	Debra Cherry
CLARINET .....	Cheryl Hill, Woo Ram Chung, James Rederstorff
BASSOON .....	Matthew Vitartas
TRUMPET .....	Ben Huntoon, Cindy King, Matt Perkins, Jeff Boehm
HORN .....	Paige Bellamy, Scott Strom
TROMBONE .....	Tommy Dale
PERCUSSION .....	Jim Swanson
HARP .....	Yah Ni, Jude Mollenhauer

# Production Staff

---

Artistic Director .....	DENNIS ROMER
Audience Services Director .....	ELIZABETH MINNICH
Production Manager/Technical Director .....	GREGORY BELL
Assistant Technical Director .....	TIMOTHY D. ALLWEIN
Assistant Technical Director .....	CORA EVANS
Costume Shop Supervisor .....	MARCIA HAIN
Stage Manager .....	KRISSY STETAR
Rehearsal Pianists .....	BETH BURRIER-BRADSTREET, MICHELLE EDMINSON, MICHAEL HABERKORN, SUE WHITE
Assistant Scenic Designer .....	STACEY SINCLAIR
Assistant to the Costume Designer .....	MATT D'OYLY
Assistant Stage Managers .....	BRYANNE BORNSTEIN, JASON WALKER
Prop Master .....	ALISON ACIERNO
Master Carpenter .....	PATRICK GREEN
Master Painter .....	HOLLY BARNETT
Master Electrician .....	FRANK CIRIVELLO
Wardrobe Master .....	EDITH DINGER
Assistant to the Artistic Director .....	MATT WOLFE
Assistant Prop Master .....	STEVE SAKOWSKI
Assistant Master Electrician .....	MEGAN EVANS
Sound Operator .....	PAUL KAVICKY
Sound Consultant .....	DAVE MEAD
Guest Professional Scenic Technician .....	WILLIAM LEE CECIL III
Guest Professional Scenic Technician .....	GEORGE DESHETLER
Guest Professional Scenic Technician .....	MIKE SHERTZER
Costume Stitcher .....	CARLA GUTCHES
Sound Technician .....	KEVIN J. LOWRY
Sound Technician .....	BRANDON HUFFMAN
Dramaturg .....	KRISTA LIVELY
House Manager .....	MATT WOLFE
Box Office Manager .....	ELLEN PARKE



# Director's Note

---

This part of Oklahoma was called the Dust Bowl in the 30's, when the rains stopped and the winds came. It wasn't all that different at the turn of the century. It was hot and dirty and windy and you couldn't ever get anything clean, not your house, not your boots and not your clothes. The sun bleached everything. Even a new building looked weathered. So did the faces. And the dirt was red.

The people who came to the Oklahoma territory were pioneers. They started with nothing except hope and the willingness to work hard. Farming is the toughest work in the world. Next to cowboying. The key song in the show may be "The Farmer and the Cowman." It's the basic conflict in the West, and not that much different than the conflict between the Israelis and the Palestinians. Both want the land for different purposes. Neither sees how he could live alongside The Other. But the truth is, they have to live together if they want to survive.

The one who really understands this is Aunt Eller, and she is the heart and soul of Oklahoma. Watch her as she helps her children make a brand-new life and a brand-new state. And listen as she speaks the words of the pioneers: "Oh, lots of things happen to folks, Laurey. Sickness, er bein' pore and hungry even—bein' old and afeared to die. That's the way it is—cradle to grave. And you can stand it. They's one way. You gotta be hearty, you got to be. You cain't deserve the sweet and tender in life less'n you're tough."

Welcome to Aunt Eller Murphy's Oklahoma!

## SCENIC STUDIO ASSISTANTS

Alison Acierno, Ray Auxais, Holly Barnett, Stefani Bergquist, Elizabeth Carroll, Frank Cirivello, Vince Cirivello, Abby Clark, Edith Dinger, Tom Draper, Mike Draper, Tim Fulton, Patrick Green, Marisa Keith, Kevin Lowry, Leah Turvy

## ELECTRICS CREW

Meghan Evans, Brandon Huffman, Justin Leath, Kevin Lowry, Pamela McVeagh, Hillary Miller, Lorelei Moore, Samuel Ross, Michael Ruehrmund, Daniel Schwartz

## SET/PROPERTIES RUNNING CREW

Abby Christen, Taibi Magar, Ellen Parke, Adam Workman

## WARDROBE CREW

Stephanie Bergquist, Lindsay Brenner, Elizabeth Carroll, Catherine Secor, Adam Schorsten, Beth Wagner

## SCENIC STUDIO PARTICIPATION STUDENTS

David Beukema, Abby Christen, Taibi Magar, Jason Marion, Ellen Parke, Kathryn Sanders, Adam Workman

## BOX OFFICE CREW

Krista Lively, Jason Marion, Pamela McVeagh, Paolo Reginaldo, Rebekah Sheldon

# Special Thanks

---

The Ohio State University  
Fred Smith  
Rod's Western Palace



# Biographies

---

**John Stefano** (Director) has been chair of the Department of Theatre and Dance at Otterbein College since 1992. He began his professional acting career at the Mark Taper Forum in Los Angeles and has appeared in productions around the country, most recently as John Adams in Otterbein's production of the musical *1776*. He has also directed over fifty productions, thirteen of them at Otterbein, including the musicals *Big River*, *Baby*, *Sweet Charity*, and the Dispatch's Best Musical of last season, *West Side Story*. In 1998, he was awarded the Kennedy Center American College Theater Festival Gold Medallion Award of Excellence. He thanks his teammates, Stella, Dana, Marci, Dick, Susan, Beth, Robert, Greg, Elizabeth and Tim; his stage manager, Krissy; and his wonderful cast and crew. He would like to dedicate this production to his children, David and Andrew, of whom he could not be more proud.

**Susan Larson** (Music Director) made her Otterbein debut last year conducting *West Side Story*. Susan is the orchestra director for the Bexley City Schools where she has conducted numerous musicals including *Into the Woods*, *Cabaret*, *Applause*, and others. She also performs as a violinist with several central Ohio orchestras and has conducted the Columbus Women's Orchestra. Before coming to Columbus, Susan performed with the Ohio Light Opera, Kennley Players Theatre, Porthouse Theatre, the Akron Symphony Orchestra, and the Canton Symphony Orchestra.

**Stella Hiatt Kane** (Choreographer) has been a member of the Otterbein faculty since 1989 and Coordinator of Dance since 1996, a member of BalletMet Academy faculty, and the founding Artistic Director of JazzMet. Ms. Kane has been a member of the national and international companies of American Dance Machine and has appeared in the national companies of *Sugar* and Bob Fosse's *Dancin'*. She has also made television appearances in productions such as PBS's *Dance America* and *The Ann Reinking Special* with Ann Reinking, Chita Rivera and Ben Vereen. Ms. Kane has taught for New York's American Dance Machine/Harness House, the Actor's and Director's Lab, Dance Educators of America, Dance Olympus, and Columbus Children's Theatre. She has given master classes at The Ohio State University, Bowling Green State University, Ohio Wesleyan, Kenyon College, and New York University. Ms. Kane has been a presenter for The Ohio Dance Festival and The International Network of Performing and Visual Arts' Conference. Her choreography credits include not only an eclectic range of concert repertoire, but several musical theatre productions including *Cabaret*, *A Chorus Line*, 1940's *Radio Hour*, *Sweet Charity*, and *Pippin*, and last year's production of *West Side Story*.

**Dick Block** (Scenic Designer) is happy to be designing another classic theatre piece like *Oklahoma* having in the past year opened *West Side Story* in Dayton and *A Christmas Carol* at Virginia Stage. He has designed at numerous regional theatres including the Pittsburgh Public Theatre and the McCarter Theatre in New Jersey. Recent designs include Sondheim's *Saturday Night* at The Weston Playhouse in Vermont and *The Grapes of Wrath* for Starlight Productions. New York credits include *Wilson*, a new play; *Conrack* for AMAS (nominated for an Audelco Award), *Fascinating Rhythms* (a Gershwin Revue) for a Columbia Artist tour and two pieces for Theatreworks, USA. Dick designs frequently for The Human Race and has designed for Pittsburgh Opera Theatre, the Pittsburgh Playhouse and Connecticut Repertory Theatre as well. He is on the drama faculty at Carnegie Mellon University and is very active in the American College Theatre Festival, for which he served as the first National Design Chair. He is the recipient of the Kennedy Center Medallion for Distinguished Service. Dick received his MFA from Northwestern University.

**Marcia Hain** (Costume Designer/Costume Shop Supervisor) has been a member of the Otterbein Theatre Tech Staff since 1989. She runs the costume shop full time and has also designed such shows as *Hay Fever*, *Dance 2000*, *Pinocchio*, *How The Other Half Loves*, *Once Upon A Mattress*, *1776*, *A Few Good Men*, and *Sherlock's Last Case*. She also served as Associate Designer for *Phantom*. Ms. Hain has an extensive background in Home Economics as well as commercial costuming and free-lance design and construction.

**Dana White** (Lighting Designer) is Associate Professor of Lighting, Sound and Stage Management at Otterbein College. His work at Otterbein includes lighting for the past several years' Dance Concerts, *West Side Story*, and Sound Design for *Death of a Salesman* and *King Lear*, as well as other projects. He has designed several original productions including the World Premiers of *Raindance* and *Book of Days* (winner of the Grand Prize "Best Play of 1998"), both by Lanford Wilson, and *Matchgirl* with Columbus Dance Theatre. Last summer, he directed *Science Friction*, an original play by Joe Zetlemaier, which was nominated for several awards by the Oakland Press (Detroit) and The Ann Arbor News. Recent projects include *Escanaba in da Moonlight* and *Tropical Pickle* at the historic Gem Theatre in Detroit. Mr. White is an Associate Artist at the Purple Rose Theatre and a member of United Scenic Artist Local 829.

**Beth Burrier-Bradstreet** (Vocal Director/Rehearsal Accompanist) is pleased to be working on her third production of *Oklahoma!* Some of her other Otterbein credits include *Blood Brothers*, *Damn Yankees*, *Narnia*, *A Little Night Music*, *Gyps and Dolls*, *Falsettos Crazy For You* and *1776*. Beth teaches voice for performance and solo singing at her studio, and is an accompanist and voice teacher for the Thomas Worthington High School Choral Program.



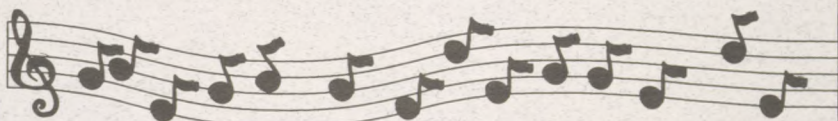
# THE KENNEDY CENTER AMERICAN COLLEGE THEATER FESTIVAL XXXIII

Presented and Produced by the John F. Kennedy Center for the Performing Arts  
Supported in Part by the Kennedy Center Corporate Fund  
The U.S. Department of Education  
The National Committee for the Performing Arts

This production is entered in the Kennedy Center American College Theater Festival (KC/ACTF). The aims of this national theatre education program are to identify and promote quality in college-level theatre production. To this end, each production entered is eligible for a response by a regional KC/ACTF representative, and certain students are selected to participate in KC/ACTF programs involving awards, scholarships, and special grants for actors, playwrights, designers and critics at both the regional and national levels.

Productions entered on the Participating level are eligible for inclusion at the KC/ACTF regional festival and can also be considered for invitation to the KC/ACTF national festival at the John F. Kennedy Center for the Performing Arts in Washington, D.C., in the spring of 2001.

Last year more than 900 productions and 18,000 students participated in the American College Theater Festival nationwide. By entering this production, our department is sharing in the KC/ACTF goals to help college theatre grow and to focus attention on the exemplary work produced in college and university theatres across the nation.



## *The Stage is Yours*

Just as the conductor directs the orchestra, you control the tempo of your life at Friendship Village of Columbus. We take our cues from you to create a lifestyle ideally suited to the way you want to live. And, as the area's original life-care retirement community, we offer you convenient services, life-enriching activities, financial stability and peace of mind thanks to the convenience of on-site assisted living or nursing care, should it ever be needed.

To learn more, call (614) 890-8282.

*Friendship Village*  
OF COLUMBUS

*Your Community, Your Lifestyle*

5800 Forest Hills Blvd. • Columbus, OH 43231  
[www.friendshipvillageoh.com](http://www.friendshipvillageoh.com)

You'll find us just north of Route 161 on Forest Hills Boulevard,  
convenient to downtown Westerville.