

Otterbein University

Digital Commons @ Otterbein

2019 Summer Theatre

Productions 2011-2020

5-30-2019

Smoke on the Mountain

Otterbein University Department of Theatre and Dance

Follow this and additional works at: https://digitalcommons.otterbein.edu/summer_production_2019



Part of the [Acting Commons](#), [Dance Commons](#), and the [Performance Studies Commons](#)

Recommended Citation

Otterbein University Department of Theatre and Dance, "Smoke on the Mountain" (2019). *2019 Summer Theatre*. 1.

https://digitalcommons.otterbein.edu/summer_production_2019/1

This Book is brought to you for free and open access by the Productions 2011-2020 at Digital Commons @ Otterbein. It has been accepted for inclusion in 2019 Summer Theatre by an authorized administrator of Digital Commons @ Otterbein. For more information, please contact digitalcommons07@otterbein.edu.



OTTERBEIN
SUMMER
THEATRE
PROGRAM
2019

EPIC IMAGINATION
INTIMATE ENCOUNTERS

*Sharing the Spotlight
with Mother Nature...*



OAKLAND NURSERIES

www.oaklandnursery.com

Columbus:

1156 Oakland Park Ave.

614-268-3511

Delaware:

25 Kilbourne Rd.

740-369-5454

Dublin:

4261 W. Dublin-Granville Rd.

614-874-2400

New Albany:

5211 Johnstown Rd.

614-917-1020



"32 Acres of Gardening Pleasure"



2019

In honor of Andy...

The Otterbein Summer Theatre Company dedicates the work of the 2019 season to the memory of our beloved friend, and mentor, Andy Baker. Andy, a 2009 graduate of the Otterbein University Theatre Design/Technology program, was an integral part of Otterbein Summer Theatre since his time as a student.



Andy Baker 1985-2019

As a lighting designer, he shared his creative gifts with us for almost a decade of summer seasons, including those that featured *A Grand Night for Singing*, *My Fair Lady*, and *Altar Boyz*. Beyond his incredible talent, Andy was a leader and mentor to many of our students, working hand in hand with them as they retraced his path through the Otterbein program. His teachers will always remember him for his humility and grace, for his can-do attitude, and his genuine concern for the people around him.

A scholarship fund has been established in Andy's name to benefit future students who exhibit the leadership qualities best modeled by Andy himself. We have already collected half of the required amount for the scholarship to be available for future students.

Please consider a tax-deductible contribution to honor Andy for generations to come. We will be collecting donations at all performances of our Rare Sightings Reading Series, and donations can also be made via the Otterbein Summer Theatre box office or sent directly to:

Otterbein University
Institutional Advancement
1 S. Grove St.

Westerville, OH 43081

(Please note "Andy Baker Scholarship" in the memo line of your check.)

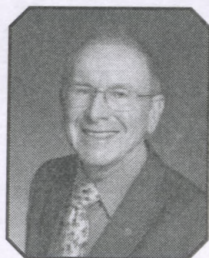
Thank you for joining us for the 2019 Otterbein Summer Theatre season!

Lenny Leibowitz
Artistic Director

Elizabeth Saltzgeber
Producer/Managing Director

Ron Lykins CPA's

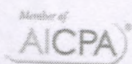
*CELEBRATING 50 YEARS OF
SERVING INDIVIDUAL AND
SMALL BUSINESS CLIENTS*



Specialized CPA Services Include:

- Individual & small business tax returns
- Small business accounting & payroll
- Personal finance & tax advising
- 529 college saving accounts
- IRA & 401(k) contributions, rollovers, & minimum required distributions
- Stock options & executive compensation
- IRS tax audits, appeals & waiver of penalties

**CALL (614) 891-1041
TO SCHEDULE A FREE CONSULTATION!**



45 W. Main St.

Westerville, OH 43081

www.ronlykinscpas.com

OTTERBEIN SUMMER THEATRE
presents

Smoke on the Mountain

Written by CONNIE RAY

Conceived by ALAN BAILEY

Musical Arrangements by
MIKE CARVER and MARK HARDWICK

Direction/Musical Staging/Musical Direction by
DAVID HEMSLEY CALDWELL*

Scenic Design by
EDITH D. WADKINS

Costume Design by
MIRANDA COTMAN

Lighting Design by
MATT HAZARD

Sound Design by
DOC DAVIS

Stage Managed by
ANNIKA MORRISON

May 30- June 2, 6-9, & 13-15, 2019
Fritsche Theatre at Cowan Hall
30 South Grove St., Westerville



The Director is a Member of the
STAGE DIRECTORS AND CHOREOGRAPHERS
SOCIETY, a national theatrical labor union.

"Smoke on the Mountain" is presented through
special arrangement with SAMUEL FRENCH, INC.

CAST

Pastor Mervin Oglethorpe	Jeremy Holder
June Sanders	Payton Tevis
Burl Sanders	Evan Kret
Vera Sanders	Grace Dillon
Stanley Sanders	Mathieu Wiesner
Denise Sanders	Katie Boggs
Dennis Sanders	Stephen Blanch

PRODUCTION STAFF

Artistic Director	Lenny Leibowitz
Producer/Managing Director	Elizabeth Saltzgeber
Technical Director	Patrick Stone
Production Manager	Kristen Cooperkline
Dialect Coach	Chris Smith
Costume Shop Supervisor	Cynthia B. Overton
Light & Sound Supervisor	Doc Davis
Manager of Ticketing & On-Campus Marketing	Tara K. Smith
Company Manager	Sarah Short
Assistant Stage Manager	Carly Salyer
Music Consultant	Don Bailey
Carpenters	Reilly Cox, Kyle Krygielski
Charge Artist	Edith D. Wadkins
Props Master	Julia Kelley
Wardrobe Master	Anna Kate Reynolds
Master Electrician/ Light Board Operator	Allison Gammons
A1	Doc Davis
Sound Assistant	Kitty Mader
Technical Apprentices	
Avery Barrett, Kitty Mader, Anna Kate Reynolds, Michelle Silva*	
Front of House Manager	Lydia Namakydoost

* denotes Deck Crew

SETTING

Mt. Pleasant, North Carolina
June - 1938

The production will be performed in two acts.
There will be one 15-minute intermission.

MUSICAL NUMBERS

Book Copyright 1991 by Connie Ray and Alan Bailey

"Wonderful Time Up There" Copyright© 1947 Vogue Music.
Copyright renewed The Welle Group.
International Copyright Secured. All Rights Reserved. Used by Permission.

"No Tears in Heaven" Copyright© 1935 Stamps-Baxter Co.
Copyright renewed 1963 National Music Co.
All Rights Reserved. Used by Permission.

"Christian Cowboy" Copyright © 1953 Oree Music.
International Copyright Secured. All Rights Reserved. Used by Permission.

"The Filling Station" Copyright© 1986 Ronald Michael Payne
All Rights Reserved. Used by Permission.

"I'll Never Die (I'll Just Change My Address)" Copyright © 1966 Sacred Songs.
International Copyright Secured.
All Rights Reserved. Used by Permission.

"Jesus is Mine" Copyright© 1980 Vogue Music.
All Rights Reserved. Used by Permission.

"I'll Live a Million Years" Copyright© 1985 Abernathy Publishing Co.
All Rights Reserved. Used by Permission.

"I Wouldn't Take Nothing for My Journey Now" Copyright© 1964 Jimmie Davis Music Co.
Inc. International Copyright Secured.
All Rights Reserved. Used by Permission.

"I'm Using My Bible for a Roadmap" Copyright© 1952 Fort Knox Music Inc. and Trio Music
Inc. Copyright Renewed.
All Rights Reserved. Used by Permission.

"I'll Walk Every Step of the Way" Copyright © 1989 Lake o' the Pines Publishing and Sapsucker
Publishing.
All Rights Reserved. Used by Permission.

"I'm Taking a Flight" Copyright © 1979 Inspirations Quartet Music Co.
All Rights Reserved. Used by Permission.

"Smoke on the Mountain" Copyright © 1988 Alan Bailey.
All Rights Reserved. Used by Permission.

"I'll Fly Away" Copyright © 1932 Albert Brumley.
Copyright Renewed 1960. All Rights Reserved. Used by Permission.

All other songs are in the public domain.

The videotaping or making of electronic or other audio and/or visual recordings of this
production or distributing recordings on any medium, including the Internet, is strictly
prohibited, a violation of the author's rights and actionable under
United States Copyright Law.

BIOGRAPHIES

Lenny Leibowitz (Artistic Director) is in his sixth year as a member of the Otterbein Theatre faculty. Since his arrival in Westerville, Lenny has directed *Oklahoma!*, *My Fair Lady*, *Into the Woods*, *Clybourne Park*, *Brighton Beach Memoirs*, *Top Girls*, *Fiddler on the Roof*, and *Adding Machine: A Musical*. As founding artistic director of Marvell Rep, Off-Broadway, Lenny directed 11 productions, including *The Threepenny Opera*, which received a Drama Desk nomination for Best Revival of a Musical. Other New York directing credits include the world premiere of Brian Yorkey's *Making Tracks*, which ran Off-Broadway at Rockefeller Center's Taipei Theater. Lenny has directed at some of the nation's leading regional theatres including the Olney Theatre, the National Players, the Huntington Theatre's Breaking Ground Festival, and the New Harmony Theatre, where he was artistic director for four years, staging *Amadeus*, *The School for Scandal*, *Guys and Dolls*, *A Streetcar Named Desire*, *The Crucible*, and *Much Ado About Nothing*, among others. A Philadelphia native, he made his professional debut as a piano soloist with the Philadelphia Orchestra. He received his B.A. from Columbia University and his M.F.A. from Boston University. Member, SDC and AEA.

David Hemsley Caldwell (Direction/Musical Staging/Musical Direction) returns to direct his 21st production for Otterbein University. Other Otterbein directing credits: *Grand Night for Singing* ('16), *The Fantasticks* ('14), *The Full Monty* ('14), *Speed the Plow* ('13), *Little Shop of Horrors* ('13), *Gypsy* ('12), *The Drowsy Chaperone* ('11), *The 25th Annual Putnam County Spelling Bee* ('10), *Altar Boyz* ('09), *My Way* ('08), *Urinetown* ('07), *The Spitfire Grill* ('07), *The 1940s Radio Hour* ('06), *The Pavilion* ('05), *Violet* ('04), *Forever Plaid* ('04), *The Butter & Egg Man* ('03), *Sanders Family Christmas* ('03), *Smoke on the Mountain* ('02) and *Butterflies are Free* ('86) as well as the Otterbein 100 Year Celebration in 2007, the 2014-2019 Otterbein Alumni Awards, and the 2014 New York Senior Showcase. He most recently directed *The Cake* for CFRT, *Baskerville* for CATCO, *Mamma Mia* for TPP, and *Mrs. Mannerly* for Max & Louie Productions in St. Louis. Past productions include *Loot*, *Radio Gals*, *Driving Miss Daisy*, *Hank Williams*, *Lost Highway*, *Almost Maine*, *Oil City Symphony*, *Leaving Iowa*, *Annie*, *Travels with My Aunt*, *Chaps*, *Always Patsy Cline*, *Big The Musical*, *Hello Again*, *Bat Boy*, *The Taffetas*, *Bye Bye Birdie*, *How to Succeed in Business Without Really Trying*, *Kimberly Akimbo*, *Vintage Hitchcock: A Live Radio Play*, *Vanya Sonia Masha & Spike*, *Pump Boys & Dinettes* and *Hay Fever*. David has worked regionally at the Cincinnati Playhouse in the Park, McCoy Rigby, Milwaukee Repertory Theatre, Meadowbrook Theatre, Riverside Theatre, Montana Rep., Muhlenberg Summer Music Festival, Totem Pole Playhouse, Merrimack Rep. Pennsylvania Stage Company, Florida Studio Theatre, Allenberry Playhouse, Little Theatre on the Square and at the MTC, New Dramatists and the Avalon Theatre in NYC. While at Otterbein (1982-1986), David appeared in *The Man Who Came to Dinner*, *Irene*, *Fiddler on the Roof*, *Witness for the Prosecution*, *Equus*, *The Wizard of Oz*, *The Imaginary Invalid*, *West Side Story*, *Arsenic & Old Lace*, *Baby*, *Terra Nova*, *The Good Doctor*, *Murder on the Nile*, *The Diary of Anne Frank*, *My Fair Lady*, *Ah, Wilderness!*, *Jacques Brel*, *Plenty*, *The Foreigner*, and *Whodunnit*.

Edith D. Wadkins (Set Designer, Scenic Charge Artist) is thankful for the opportunity to work with friends both old and new in this production of *Smoke on the Mountain*. Since graduating from Otterbein University in 2002 with a BFA in Theatre Design and Technology, she works as a freelance scenic artist and set designer around Columbus. Recently she has designed the sets for CATCO's *Breaking the Code* and *Haroun and the Sea of Stories*.

BIOGRAPHIES

Miranda Cotman (Costume Designer) is a recent graduate from Otterbein University and is very proud to be part of Otterbein Summer Theatre. Some past credits include Costume Designer for Otterbein's *The Tragedy of Macbeth*, Draper for Otterbein's *Singin' in the Rain*, and Draper for Capital University's *Kiss Me, Kate*. Miranda is looking forward to being Costume Designer for "*Master Harold*"... *and the Boys*, and Wardrobe Master for *Guys and Dolls*.

Matt Hazard (Lighting Designer) is a lighting designer who works during the day for Vincent Lighting Systems. His recent design projects include *Peter Pan* for Columbus Children's Theatre, *Little Mermaid* for Nationwide Pleasure Guild, *Hay Fever* for Otterbein, and many other designs for groups such as the Harmony Project, Kenyon College, Opera Columbus, Opera Project Columbus, the Ohio State Department of Theatre and School of Music, and several area high school productions. Matt earned his BA in Theatre and his MFA in Design at Ohio State and has taught and developed classes in the Department of Theatre. He is also an ETCP Certified Entertainment Electrician and a member of IATSE Local 12.

Doc Davis (Sound Designer/Lighting and Sound Supervisor) was born and raised in Pearl, MS. After receiving a BA in Theatre from Belhaven University, he continued his education at the University of Illinois at Urbana-Champaign. While completing his MFA in Sound Design, he worked as a sound engineer at the Krannert Center for the Performing Arts, assisting such acts as Mark Morris Dance Company, The National, Derek Trucks Band, Keb' Mo', Ralph Lemon Dance Company, and more. After receiving his MFA, he acted as a Mastering Engineer, Sound Designer, A1, Location Recordist, Video Designer, and Re-Recording Mixer for various theaters, companies, and films. Since moving to Columbus, OH, Davis has worked at Otterbein University as Lighting and Sound Supervisor and Events Coordinator. He continues to design and mix shows many times a year and especially loves sharing his approach to Audio Engineering and Sound Design to students of all ages!

Annika Morrison (Stage Manager) is a senior BFA Design/Technology major with a Psychology Minor from Ann Arbor, MI. Previous credits include Stage Manager for *The Diary of Anne Frank* and *Singin' in the Rain* at Otterbein University, as well as Stage Manager for *The Odyssey* at The Brighton for Performing Arts.

Avery Barrett (Tech Apprentice) is a sophomore BFA Design/Technology major with a Political Science minor from Austin, TX. Previous credits include Festival 2019: *A Renaissance* (Stage Manager) and Dance 2018: *Gloriously Grimm* (Production Assistant) at Otterbein university, and *Angels in America* (Stage Manager) at Cedar Park Theatre. Avery would like to thank her friends and family for their love and support. She would also like to thank Elizabeth Saltzgiver for being a bright, shining star!

Stephen Blauch (Dennis Sanders) is a sophomore BFA Musical Theatre major from Chardon, OH. Previous credits include *Singin' in the Rain* (Roscoe Dexter) at Otterbein University, *Next to Normal* (Henry) at Aurora Community Theatre, and *Children of Eden* (Adam/Noah) at Hathaway Brown Theatre Institute. Stephen would like to thank his friends and family for being so supportive and believing in him. He can be seen later this summer as Rusty Charlie/Ensemble in OST's upcoming production of *Guys and Dolls*.

BIOGRAPHIES

Katie Boggs (Denise Sanders) is a sophomore BFA Musical Theatre major from Louisville, KY. Previous credits include *Singin' in the Rain* (Stripper/Ensemble) at Otterbein University and *Hairspray* (Shelley) at CenterStage Theatre. Katie would like to dedicate her performance to her sweet mother, Gail Boggs, who has taught her the true meaning of Southern Belle.

Kristen Cooperkline (Production Manager) joined the Otterbein family in 2013. She was raised in Columbus and earned her Bachelor of Arts in History/Theatre from the College of Wooster and her Masters of Arts in American Culture Studies at Bowling Green State University. She then received her MFA in Stage Management from the University of Illinois at Urbana-Champaign. Her Illinois credits include *Macbeth*, *La Calisto*, *Battle of Angels*, *February Dance*, and *Our Town*. Following her time at Illinois, Kristen served as the Event Coordinator for the first-ever American College Dance Festival Association South Regional Conference as well as a stage manager for Bebe Miller Company. She returned to the University of Illinois in 2016 to guest stage manage February 2016, featuring the premiere of American choreographer/director Ping Chong's piece Baldwin/NOW.

Reilly Cox (Carpenter) is a sophomore BA Theatre major with Dance and Art Administration minors from Austin, TX. Previous credits include *Singin' in the Rain* (Ensemble) at Otterbein University, as well as *All Shook Up* (Ensemble) and *Guys and Dolls* (Hot Box Girl) at TexARTS. Reilly has had a blast working with this stellar cast and crew. She hopes you enjoy the show!

Grace Dillon (Vera Sanders) is a junior BFA Musical Theatre major from Ellicott City, MD. Previous Otterbein credits include *Singin' in the Rain* (Ensemble). She would like to thank Annika, Carly, David, Don, and her incomparable onstage and real-life families.

Allison Gammons (Master Electrician) is a sophomore BFA Design/Technology major with a History minor from Columbus, OH. Previous credits include *Aspects of Love* (Assistant Stage Manager) at CATCO, as well as *Singin' in the Rain* (Scenery Run Crew), *The Tragedy of Macbeth* (Wardrobe Crew), and *Hay Fever* (Light Crew/Board Op) at Otterbein University. Allison wishes to thank every member of the OST company for a fantastic start to the season. She is particularly glad for the tech apprentices, who were vital support for her.

Nick Hahn (Assistant Technical Director) is excited to return to OST! Nick is a Technical Director/Designer/Director, and holds a Bachelor's Degree in Theatre focused in Technical Direction from Otterbein University. He is currently the Assistant Technical Director at the Short North Stage, where he facilitated the builds for most shows in the 18/19 season. When not living the theatre life, he is hanging out with his hedgehog or taking in copious amounts of podcasts.

Jeremy Holder (Pastor Mervin Oglethorpe) is a sophomore BFA Musical Theatre major from Orlando, FL. Previous credits include *RENT* (Mark) and *Twelfth Night* (Malvolio) at the Dr. Phillips Theatre, as well as *Singin' in the Rain* (Assistant Director #2) at Otterbein University. Jeremy is so happy to be given this opportunity and wants to thank his friends and family for all of their love and support.

BIOGRAPHIES

Julia Kelley (Props Master) is a sophomore BFA Design/Technology major with an Arts Administration minor from Hilliard, OH. Previous Otterbein University credits include *Big Fish* (The Big Fish) and *Singin' in the Rain* (Assistant Props Master). Julia would like to thank the Otterbein Summer Theatre staff for their upbeat energy and for answering her many questions. She would also like to thank her parents and friends for their endless support and sarcasm.

Evan Kret (Burl Sanders) is a junior BFA Acting major from Westerville, OH. Previous Otterbein University credits include *Singin' in the Rain* (Ensemble), *The Tragedy of Macbeth* (Angus) and *Thoroughly Modern Millie* (George Gershwin).

Kyle Krygielski (Carpenter) is a sophomore BA Theatre major from Temperance, MI. Previous Otterbein University credits include Dance 2018: *Gloriously Grimm* (Carpenter) and *Hay Fever* (Carpenter).

Kitty Mader (Technical Apprentice) is a sophomore BFA Design/Technology major from Avon, OH. Previous Otterbein University credits include *Singin' in the Rain* (Paints and Sound Assistant), *The Tragedy of Macbeth* (Assistant Master Electrician), and *Big Fish* (Projections Operator). Kitty is thrilled to be working for Otterbein Summer Theatre and hopes to continue making beautiful art for audiences in the future!

Lydia Namakydoost (House Manager) is a sophomore BA Theatre and BME Music Education double major from Powell, OH. Previous credits include performer in Festival 2019 and The Reminder Project – 2019: *Outsiders* with 11th Hour Theatre Company. She thanks her friends, family, and the box office team for all of their support.

Cynthia B. Overton (Costume Shop Manager) is excited to be a part of the Otterbein Summer Theatre season. Cynthia is currently pursuing her MFA in Design at The Ohio State University with a focus in costumes. Ohio credits include costume design at The Ohio State University for *Twelfth Night, or What You Will* and *Execution of Justice*, assistant wardrobe manager at Opera Columbus for *The Flood*, and draper at The Ohio Light Opera for the 2018 season. Cynthia has also worked for the Illinois Shakespeare Festival, Utah Shakespeare Festival, Dallas Theater Center and Nevada Conservatory Theatre. While not surrounding herself with costumes, you can find her exploring Ohio and taking the less traveled road to find new adventures.

Anna Kate Reynolds (Wardrobe Master) is a sophomore BFA Design/Technology major from Houston, TX. Previous Otterbein University credits include *Singin' in The Rain* (Props Assistant) and Dance 2018: *Gloriously Grimm* (Sound Board Op). Anna would like to specially thank Miranda for teaching her the ropes of summer theatre and her parents for their unwavering support while she follows her dreams so far from home.

Elizabeth Saltzgiver (Producer/Managing Director) has been a member of the administrative staff since 2000. Her experience in Arts Administration includes work for dhc productions, the Westerville Symphony, the Chicago Symphony Orchestra, the Ohio Light Opera, Ashland University College of Arts and Sciences, and the Ashland Balloon Fest. Elizabeth holds a B.A. in Music and Business from Otterbein University and is currently Treasurer for the Columbus Arts Marketing Association and a member of the Westerville Visitor & Convention Bureau Board of Trustees.

BIOGRAPHIES

Carly Salyer (Assistant Stage Manager) is a junior BA Theatre major with a Film Studies minor from Columbus, OH. Previous Otterbein University credits include *Singin' in the Rain* (Assistant Wardrobe Master), *The Tragedy of Macbeth* (Assistant Stage Manager), and Otterbein Summer Theatre 2018 (Tech Apprentice).

Anna Sheridan (Box Office Assistant) is a junior BFA Acting major from Cleveland, OH. Previous credits include *Seascape* (Nancy), *Pillowman* (Ariel), and *The Tragedy of Macbeth* (Witch). Anna would like to thank her friends and family for their constant love and support.

Sarah Short (Company and Box Office Manager) is a senior BA Theatre and Business Administration double major with a minor in Arts Administration from Marion, OH. Previous Otterbein University credits include *Big Fish* and *The Tragedy of Macbeth* (House Manager). She is currently the Non-Profit Management intern for Pitch Her Productions. She is thankful to her family, friends, and Elizabeth for all their love and support.

Michelle Silva (Technical Apprentice) is a sophomore BA Theatre major with Psychology and Arts administration minors from Dublin, OH. Michelle would like to thank her big, Sarah, for all of her constant love and support and for being the greatest big of all time.

Chris Smith (Dialect Coach) is a senior BFA Acting major from Toledo, OH. Previous credits include *The Crucible* (Giles Corey) and *Rumors* (Lenny).

Patrick Stone (Technical Director) began his tenure as the Technical Director at Otterbein in the Fall of 2014. He spent the previous seven years at the University of Arkansas as the Faculty Technical Director. He holds a Master of Fine Arts from the University of South Dakota in Vermillion and a Bachelor of Arts from Doane College in Crete, Nebraska. He teaches classes in stage-craft, properties design and construction, metal working, technical direction, wood working, and motion scenery. Patrick also enjoys consulting with local and regional theatres ranging from professional through junior high school. When not in the Scenic Studio or backstage, Patrick enjoys any activity that gets him outdoors. Last spring, he was happy to receive a promotion at Otterbein to Associate Professor status. In an effort to 'get out of his rut,' Patrick recently joined a trepanation club: "the people were nice, but the activity was too extreme for me but at least they gave back mmdgrum munnn."

Payton Tevis (June Sanders) is a senior BFA Musical Theatre major from Erie, PA. Previous credits include *Hay Fever* (Judith Bliss), and *Adding Machine: A Musical* (Daisy) for Otterbein University, as well as *Oklahoma!* (Ado Annie) for Otterbein Summer Theatre 2018. Payton would like to thank her family and Trey for the endless love and support. She is very excited to be playing Adelaide in OST's production of *Guys and Dolls* next month and Mama Morton in Otterbein's fall production of *Chicago*.

Mathieu Wiesner (Stanley Sanders) is a junior BFA Musical Theatre major from East Lansing, MI. Previous credits include *Hay Fever* (Richard Greatham), and *The Tragedy of Macbeth* (Menteith) at Otterbein University, and *Oklahoma!* (Curly) for Otterbein Summer Theatre 2018. As always, thanks and love to Mah, Dad, Nick, and Steve, and everyone else who makes this possible. Special thanks to gramps for the guitar!

ABOUT THE CREATORS

Alan Bailey co-authored one of the country's most frequently produced musicals, *Smoke on the Mountain*, which ran more than five hundred performances at the Lamb's Theatre in New York, garnering award nominations from the Drama Desk, Outer Critics Circle, and the Stage Directors and Choreographers Foundation. It was named one of the ten best plays of the year by Time magazine, The New York Times, and the Associated Press. *Smoke on the Mountain* and its sequels *Sanders Family Christmas* and *Smoke on the Mountain Homecoming* are among Samuel French's most frequently produced plays. Additionally, Mr. Bailey has written eight plays that have been produced regionally; he contributed to the musical scores of six of these shows, including the cult favorite *Henry the 8th* at the Grand Ole Opry. His play *Wedding Belles* was a semi-finalist for the American Theatre Critics Association's Harold and Mimi Steinberg New Play Award, recognizing the best plays of the year that premiered professionally outside New York City. Alan, a Macon, Georgia native, is a five-time undefeated *Jeopardy* champion and multi-tournament *Jeopardy* veteran. Additionally, he is not only one of the few humans to defeat IBM's computer Watson in a *Jeopardy* match, he holds the record for having beat that fearsome son-of-a-bitch computer by the biggest margin of any player who lived to tell it.

Mike Craver is a North Carolina based songwriter, actor, and composer. Off-Broadway credits include *The Oil City Symphony* (co-author and original cast member, cast recording, Drama Desk award), *Smoke on the Mountain* (arrangements, published by Samuel French), *Radio Gals* (co-author and original cast member, cast recording, LA Ovation award, published by Samuel French), *Wilder* (co-author and original cast), original music for Sam Shepard's *A Lie of the Mind*, and Bland Simpson and Jim Wann's *Diamond Studs* (cast recording and band). Mike also arranged and wrote original material for *Smoke on the Mountain Homecoming* (published by Samuel French). He has worked in theatres across the country, including the Pasadena Playhouse, Actors Theatre of Louisville, and the Cape Playhouse in Dennis, MA. Commissioned work includes four musicals (*Bosh and Moonshine*, *The Belle of Wabash*, *Sarah Bernhardt in Texas*, and *Oklahoma Hale and Damnation*) based on a troupe of actors and musicians touring the American West during the 19th century. Mike collaborated with southern novelist Clyde Edgerton on a musicalization of Edgerton's novel *Lunch at the Piccadilly*. Mike graduated from the University of North Carolina and was a member of the Red Clay Ramblers for many years. Recorded work includes nine Red Clay Ramblers albums. Craver has released three solo albums - *Fishing for Amour*, *Wagoner's Lad*, and *Shining Down* - and recordings of two musical projects with Clyde Edgerton - *Lunch at the Piccadilly* and *The Bible Salesman*. He currently plays with the old time string band Craver, Hicks, Watson & Newberry.

Mark Hardwick composed the music for the 1975 Broadway production of *Of Mice and Men* and co-wrote the musical *Oil City Symphony*.

Connie Ray is a playwright and actress who divides her time between LA and NYC. She wrote the musicals *Smoke On The Mountain*, *Sanders Family Christmas*, and *Smoke On The Mountain Homecoming*, three of Samuel French's most popular titles. Her musicals and plays have been produced Off-Off Broadway, Off Broadway, Regionally and around the world. On Broadway she appeared in *Hands On A Hardbody*, *Next Fall*, and *The Heidi Chronicles*. Films include *Flags Of Our Fathers*, *Thank You For Smoking*, *About Schmidt*, *Hope Floats* among others. TV: Star of *The Torkelsons*, recurring guests on *The Big C*, *Justified*, *Entourage* among many others.

HONORARY CAST LIST

The entire company extends special gratitude to those who have donated so generously to the 2019 Otterbein Summer Theatre Season.
(This donor list only reflects gifts made to the Summer Theatre Patron Fund in 2019.)

Artistic Director (\$5,000 +)

Oakland Nursery
Paul S. and Sheila Reiner

Director (\$1,000-\$4,999)

Margaret & Michael Lenaghan
Riverside Hearing Services, LTD

Designer (\$500-\$999)

David C. & Nancy E. Evans
Mary McKeon

Al & Louise Minor
Barbara M. Ruppel

Diva (\$250-\$499)

Judy Bear
Edmund Cox & Diane Daily
Ted & Eileen Huston
Doug Smeltz

Anne M. Van Buskirk
Laura Cean Wilson
Norma F. Worley

Star (\$100-\$249)

Jane & Dennis Blank
Chip Bruchac
Mike Burns
Len & Sharon Bussard
C.J. & Linda C. Cavalaris
Barbara Clapham
Mike & Debra Collins
Sharon & John L. Davis
Brent & Nancy Devore
Margaret Doone
Tom & Judy Driskell
Margaret Duffy
Benedicta Enrile
Sandra K. Freer
Gretchen & Jeffery Glasgow
Ned & Jeanie Heinbach
Gayle & Vince Herried
Lynda Huey
Stanley Kronenberger
Barbara & David Lambert
Polly Lindemann
Dr. Bernard Losekamp
Catherine Loveland
Trudy & Michael Mason
Michael & Jane McGrew

Pearson McWane
William V. & Harriet L. Merriman
Karen Miller
Linda Montgomery Smith
Jack W. & Peggy Moreland
Dennis B. & Marjorie Munger
Alan & Carol Norris
Dennis & Sue Ann Norton
Brad Ostroff
James R. & Martha Owens
James Paxton
Dr. Jeff Reutter
Elizabeth A. Salt
Nancy Schweiger
Don & Carol Shoemaker
Howard & Bonnie Spring
David & Beckey Stamm
Jon & Joyce Stonebraker
Lois Szudy
Janice Townsley
Richard & Mary Jo Weaver
Gayla & Gary Whitacre
Rich & Carolyn White
Patricia Wright
Craig & Carol Young

HONORARY CAST LIST

Supporting Actor (\$50-\$99)

Bill & Judy Barr	Ramona & James Edman	Steve & Carol Polsley
Fred & Patricia Baum	James Farmer	Albert & Louise Siegel
Linda & Pat Blayney	Joanne Swank Gillum	Jane Sprague
James V. Blazek	Philip & Kathleen Gross	Glenna Stemen
Linda Blicke	Marcia Hain	Richard Thomas
Carl & Carol Boehm	Jeff & Lynn Hill	Michele Wilson Toney
Anthony J. & Judith Carmona	J. Thomas & Kathleen Jones	Catharine Warmbrand
Barbara & Wallace Cash	Liz & J.R. Kolmer	David B. & Joyce Shannon
Ted R. Chaney	Raymond Maher	Warner
Deborah Coleman	Jerry & Judi Miller	Barbara Weaver
Clay Cormany & Rebecca	Lee & Marvin Miller	Carl & Judith Weaver
Coleman Princehorn	Connie & Neil Ostrove	Sara Willson

Extra (\$10-\$49)

Kay F. Ball	Beverly Green	Dorothy Rowland
David Binkovitz	Kimberly Fippin Hoessly	Edwin Scheiderer
Ray & Allen Bluemel	Ron & Mary Armstrong	Alyce & Paul Sheridan
Elizabeth A. Burrier	Hooker	Linda Simpson
Kathy Butler	Verna Hubbard	Jerry & Karen Squires
Candyce Canzoneri	Marybeth Ingram	Bruce Storts
Kenneth Carter	Ron & Suzi Jones	James Tarpoff
Eloise V. Collier	Ron & Beth Kenreich	Kay Wagner
Richard & Diane Demlow	Suzanne Martin	James E. & Carol Carpenter
Marie & Richard J. Dilley	Barbara L. Martin	Waugh
Barbara Donohue	Charles Morrow-Jones	Thomas White
Mary Forster	Janice & Robert Patton	Grace Wiley
Lawrence Friedman	Doris C. Plaine	Roger L. Wilson
Mark A. Geary	David Pritchard	Ann & David L. Ziegel
Edwin A. Geer	Tom & Sally Rice	

Otterbein Summer Theatre extends
special thanks & recognition to

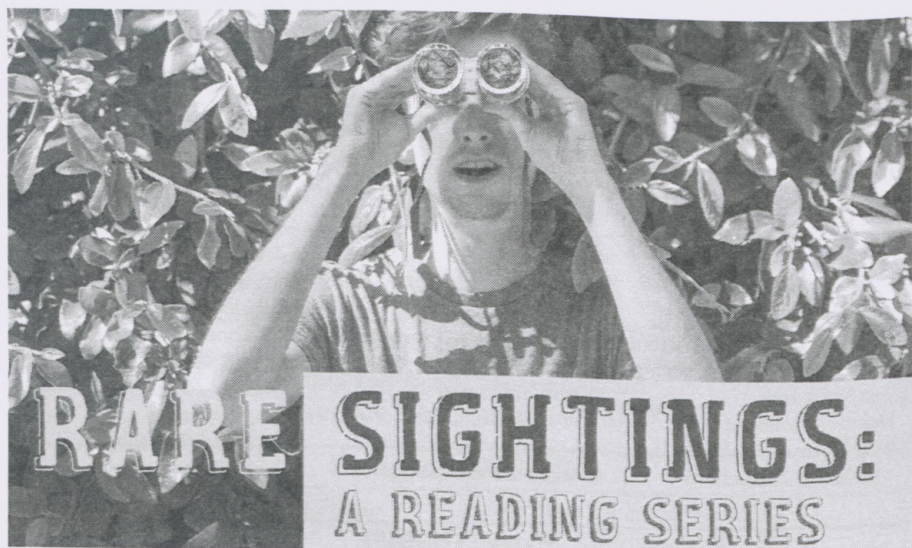
Don Bailey

Mark Stevens, Westerville South High School

Jim Bates, Otterbein University Dept. of Music

Solich Piano & Music Company

for their generous assistance with this production.



A
Year
With

Frog and Toad

Saturday, June 8

10:00am

Fritsche Theatre at Cowan Hall

(during the Westerville Farmer's Market)

A one hour musical made
especially for children!

Based on Arnold Lobel's well-loved books, this whimsical show follows two great friends – the cheerful, popular Frog and the rather grumpy Toad – through four fun-filled seasons. Waking from hibernation in the Spring, Frog and Toad plant gardens, swim, rake leaves, go sledding and learn life lessons along the way. The two best friends celebrate and rejoice in the differences that make them unique and special. The jazzy, upbeat score bubbles with melody and wit, making it an inventive, exuberant and enchanting musical, perfect for introducing theatre to young audiences while keeping adults entertained as well.



ADMISSION IS FREE!

*A free-will offering will be
collected to benefit the
Andy Baker Scholarship Fund*

Franz Lehár's operetta

Saturday, June 22

8:00pm

Fritsche Theatre at Cowan Hall



*Featuring Otterbein Faculty
Lori Kay Harvey & Robert Bux*

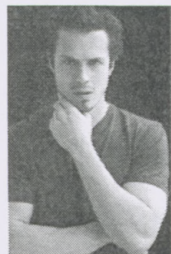


Hanna Glawari, the Merry Widow, is beautiful and rich... and she's captivated every man in the country. But Hanna is looking for true love. Will she be able to find a suitor that is not only after her wealth? Will the nation of Pontevedro slip into economic collapse if she marries a foreigner? Franz Lehár's magical score features the famous "Vilja" song, the "Merry Widow Waltz," and many more beloved melodies.



WAITING FOR GODOT

BY SAMUEL BECKETT



Friday, July 5 - 8:00pm

Towers Hall, Philomathean Room
(Take the elevator to the 3rd Floor)

*Featuring TV & Film
Actor Jake Robinson '12*

Two wandering tramps, Vladimir and Estragon, wait by a lonely tree, to meet up with Mr. Godot, an enigmatic figure in a world where time, place and memory are blurred and meaning is where you find it. The tramps hope that Godot will change their lives for the better. Instead, two eccentric travelers arrive, one man on the end of the other's rope. The results are both funny and dangerous in this existential masterpiece.



ADMISSION IS FREE!

*A free-will offering will be
collected to benefit the
Andy Baker Scholarship Fund*



Authorized YAMAHA Piano Dealer for Northern and Central Ohio



YAMAHA

- High-quality Upright Pianos
- Concert and Baby Grand Pianos
- Clavinova Digital Pianos
- Yamaha Hybrid, TransAcoustic & Silent Pianos
- Yamaha Disklavier Reproducing Pianos

SOLICH PIANO CLEVELAND

27730 Chagrin Boulevard • Woodmere, Ohio 44122
216-831-1044 • www.SolichMusic.com

SOLICH PIANO COLUMBUS

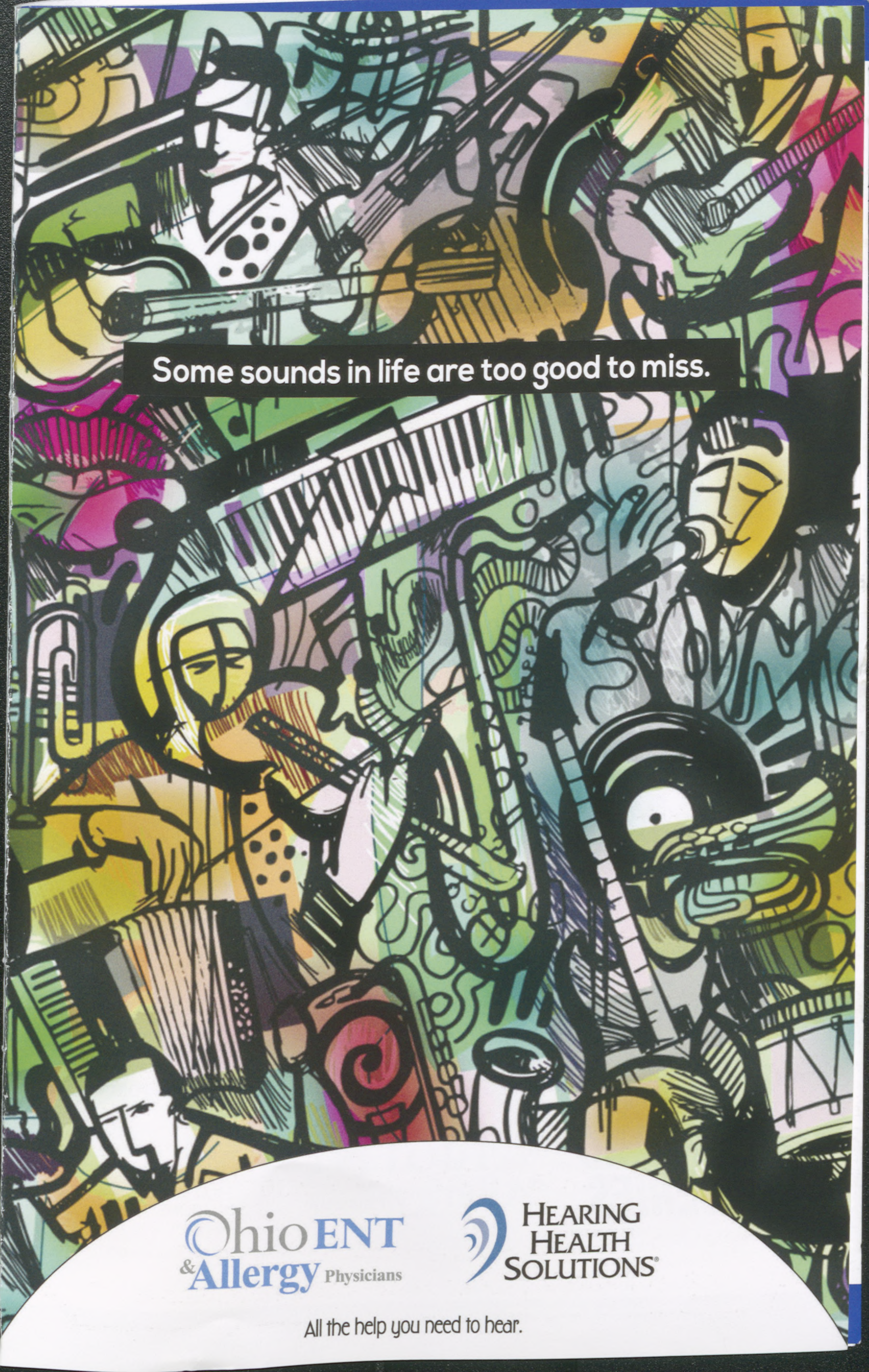
6370 Proprietors Road • Worthington, Ohio 43085
614-888-3441 • www.SolichPianoColumbus.com

SOLICH PIANO YOUNGSTOWN

1315 Boardman-Canfield Road • Boardman, Ohio 44512
330-726-9400 • www.SolichMusic.com

Outreach@SolichMusic.com

New and used pianos.
Special savings for educators and institutions!



Some sounds in life are too good to miss.

Ohio ENT
& Allergy Physicians

HEARING
HEALTH
SOLUTIONS®

All the help you need to hear.

LATECOMER'S POLICY

The House Manager may seat latecomers only during times which minimize disruption of the performance. The management accepts no responsibility for inconvenience to latecomers and can make no adjustment because of it.

FIRE NOTICE

The exits are indicated by red lights. In the event of fire or any other emergency, please do not run – walk to the exit as directed by theatre management.

CAMERAS AND RECORDING DEVICES

The use of recording equipment and the taking of photographs during the performance are strictly prohibited.

RESTROOMS

Restrooms are located both on the ground level and in the basement of Cowan Hall. Additional restrooms are available across the street in Roush Hall.



Assistive Listening Devices are available at the Box Office upon request.

THE 2019 OTTERBEIN SUMMER THEATRE SEASON IS PRODUCED WITH GENEROUS SUPPORT FROM:



**OAKLAND
NURSERIES**

oaklandnursery.com

**Ohio ENT
& Allergy Physicians**

PEDIATRIC AND ADULT
ohioentdocs.com



**HEARING
HEALTH
SOLUTIONS**
from Ohio ENT™

hearinghealthsolutions.com